

STATE OF ILLINOIS DEPARTMENT OF TRANSPORTATION DIVISION OF HIGHWAYS PLANS FOR PROPOSED BRIDGE REPLACEMENT AND REHABILITATION PROGRAM

ROUTE NO.	SECTION	COUNTY	TOTAL SHEETS	SHEET NO.
FAS 2792	00-00114-00-BR	MARION	14	1
FED. ROAD DIST. NO.		ILLINOIS	PROJECT	

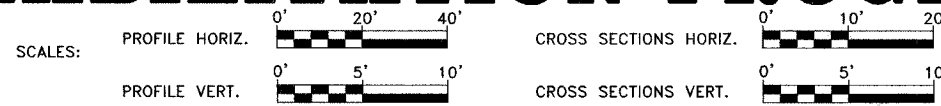
CONTRACT NO. 95461



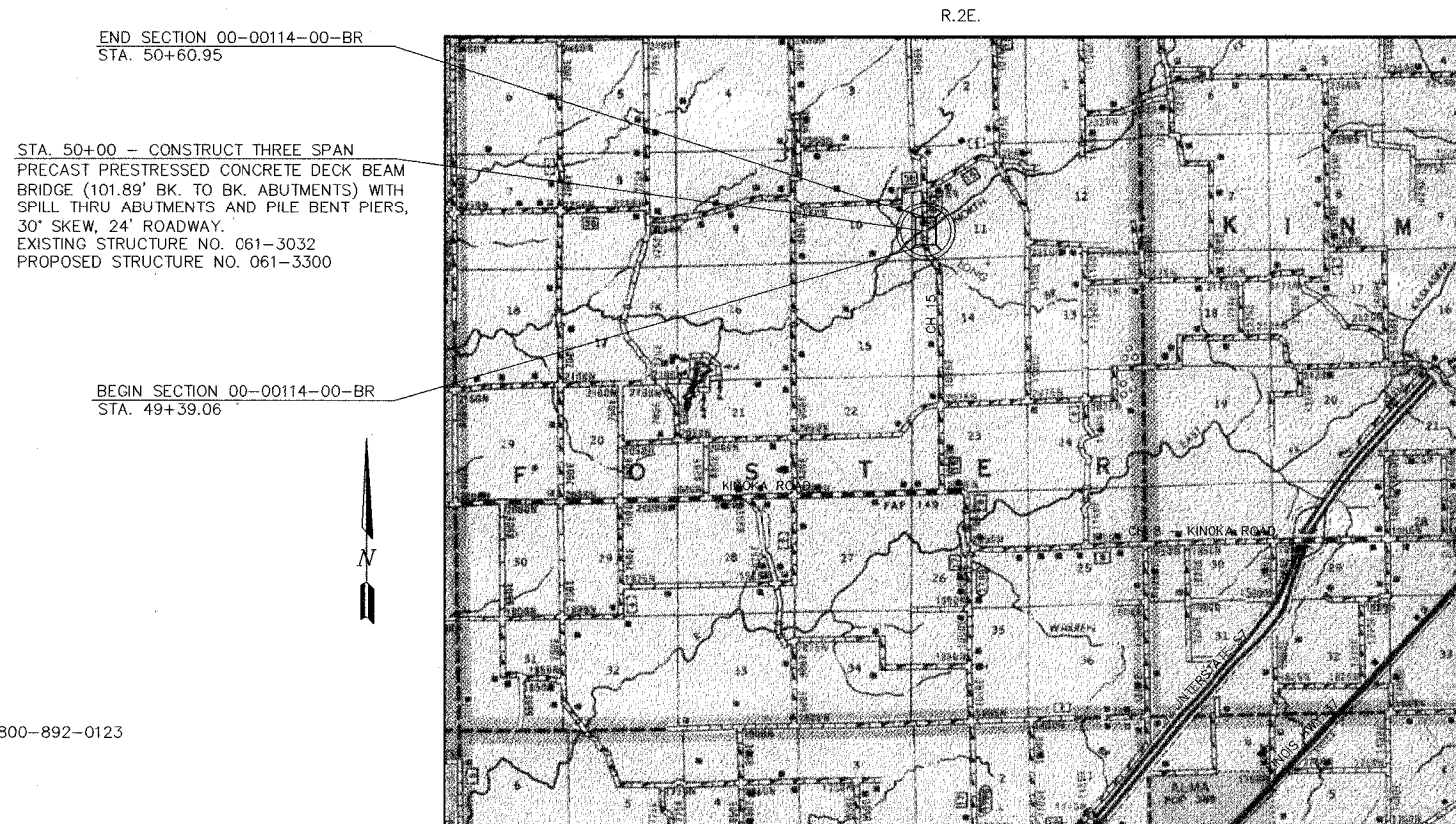
LOCATION OF PROJECT INDICATED THUS - - -

INDEX OF SHEETS

- 1 COVER SHEET
 - 2 TYPICAL CROSS SECTION, GENERAL NOTES AND SUMMARY OF QUANTITIES
 - 3 PLAN AND PROFILE SHEET
 - 4-13 BRIDGE PLANS
 - 14 CROSS SECTIONS
- STANDARD 000001-04 STANDARD SYMBOLS, ABBREVIATIONS AND PATTERNS
- STANDARD 280001-02 TEMPORARY EROSION CONTROL SYSTEMS
- STANDARD 702001-06 TRAFFIC CONTROL DEVICES
- STANDARD B.L.R. 21-6 TYPICAL APPLICATION OF TRAFFIC CONTROL DEVICES FOR CONSTRUCTION ON RURAL LOCAL HIGHWAYS



SECTION 00-00114-00-BR PROJECT NO. BR0S-2792(105) MARION COUNTY JOB NO. C-97-060-04

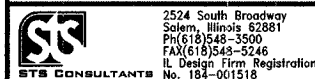


LOCATION MAP

APPROXIMATE SCALE - 1" = 0.73 MILES
NET LENGTH OF IMPROVEMENTS = 121.89 FOOT = 0.023 MILE

48 HOURS PRIOR TO EXCAVATION CALL J.U.L.I.E.: 1-800-892-0123

CLASS ROAD: RURAL MAJOR COLLECTOR
A.D.T. = 125
40 M.P.H.



STS JOB NO. 30132/MAHD0008

APPROVED January 26, 2006
John C. Cunningham
COUNTY ENGINEER

PASSED 2/24, 2006
Michael D. Kavel
DISTRICT SEVEN ENGINEER OF
LOCAL ROADS & STREETS

Releasing For
Bid Based on
Limited Review 2/24, 2006
Christina M. Reed
DEPUTY DIRECTOR OF HIGHWAYS,
REGION FOUR ENGINEER

STATE OF ILLINOIS
DEPARTMENT OF TRANSPORTATION



1-24-06
Lic. Exp. 11-30-07