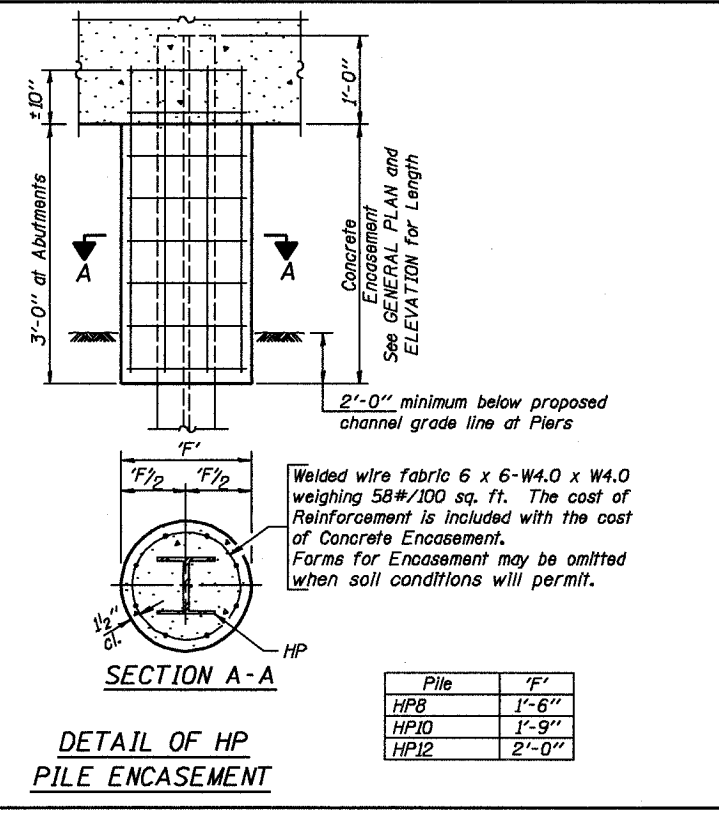
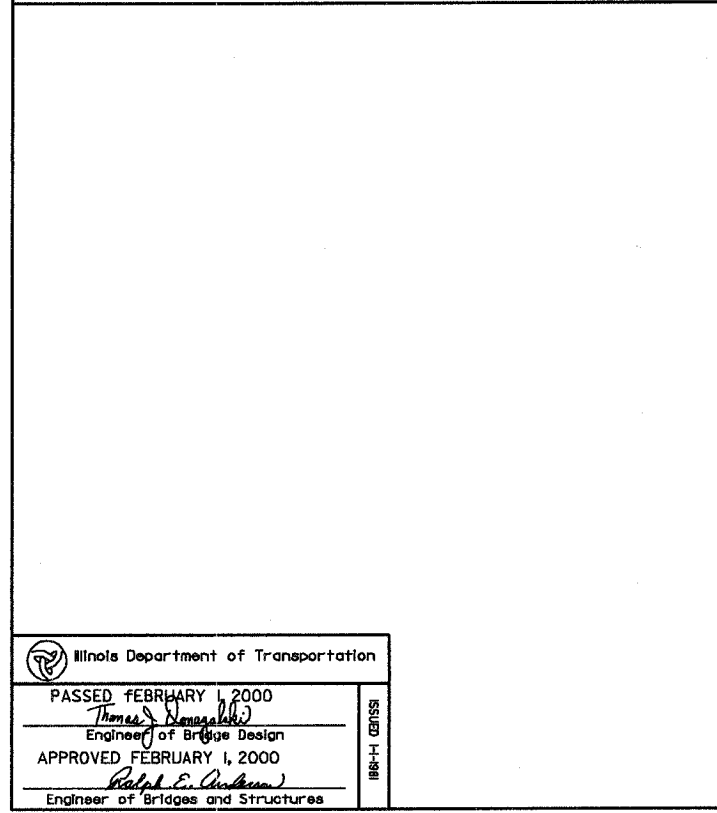
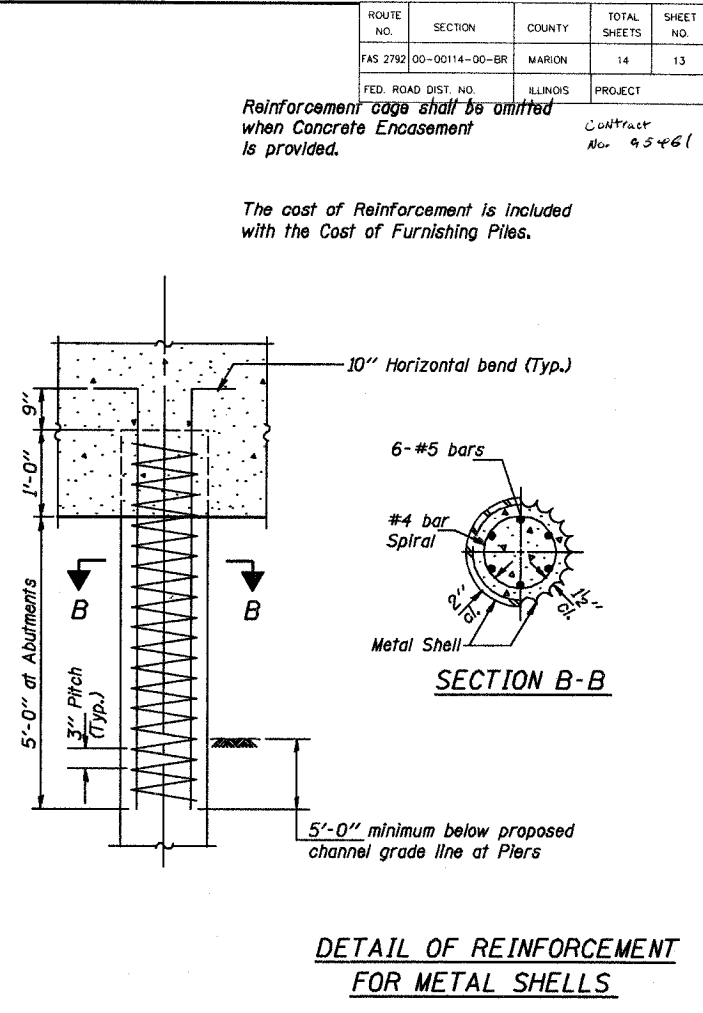
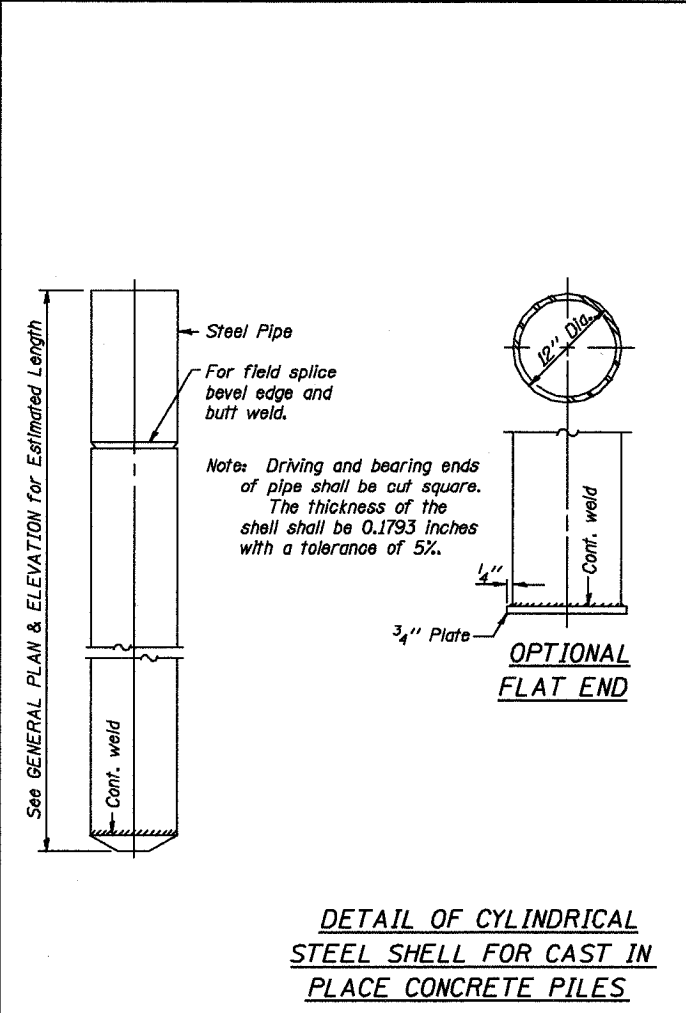
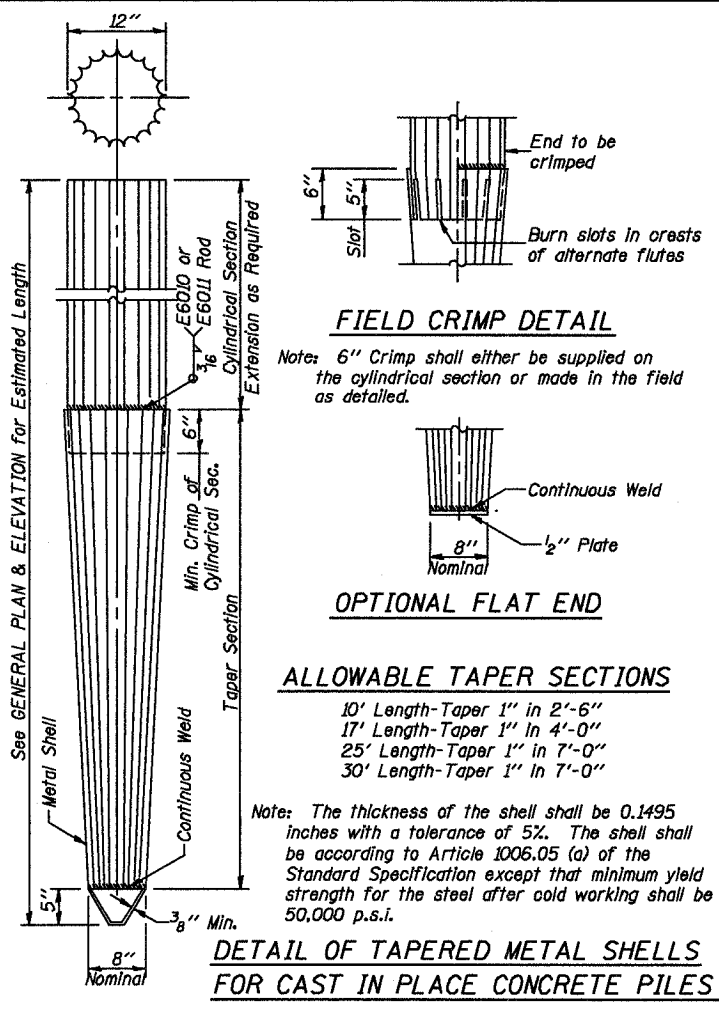
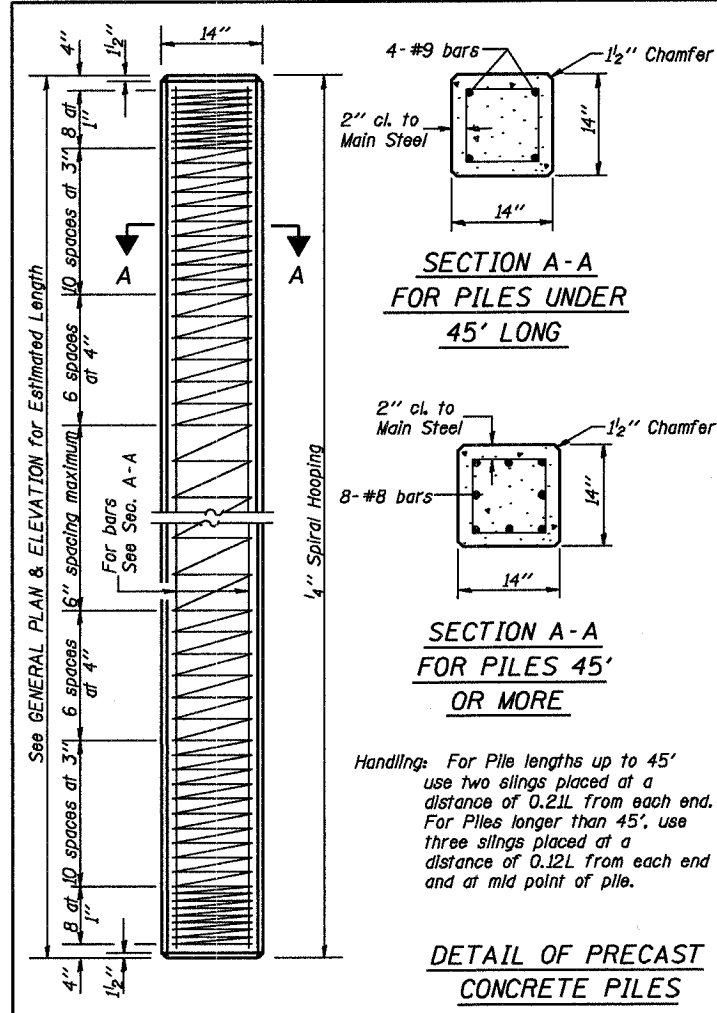


ROUTE NO.	SECTION	COUNTY	TOTAL SHEETS	SHEET NO.
FAS 2792	00-00114-00-BR	MARION	14	13
FED. ROAD DIST. NO.	ILLINOIS	PROJECT		

Reinforcement cage shall be omitted when Concrete Encasement is provided. Contract No. 95461

The cost of Reinforcement is included with the Cost of Furnishing Piles.



QUANTITIES/FT. OF ENCASEMENT (STEEL PILES)

Pile Size	Item	Quantity
HP8	Concrete Encasement	0.063 C.Y.
HP10	Concrete Encasement	0.086 C.Y.
HP12	Concrete Encasement	0.112 C.Y.

(METAL SHELL PILES)

Pile Size	Item	Quantity
12" Dia.	Concrete Encasement	0.087 C.Y.

PILE DETAILS

STANDARD CX-1

Illinois Department of Transportation
 PASSED FEBRUARY 1, 2000
 Thomas J. Romagnolo
 Engineer of Bridge Design
 APPROVED FEBRUARY 1, 2000
 Robert E. Anderson
 Engineer of Bridges and Structures