

SECTION	COUNTY	TOTAL SHEETS	SHEET NO.
03-00112-00-BR	WAYNE	10	1
FAS ROUTE 2821, COUNTY HIGHWAY 21			
ILLINOIS PROJECT BRS-2821 (107)			
OWENS CREEK BRIDGE CONTRACT NO. 95463			

STATE OF ILLINOIS  
DEPARTMENT OF TRANSPORTATION  
PLANS FOR  
PROPOSED LOCAL AGENCY IMPROVEMENT  
FEDERAL-AID B.R.R.P. PROJECT BRS-2821 (107)

F. A. S. ROUTE 2821, COUNTY HIGHWAY 21  
SECTION 03-00112-00-BR  
WAYNE COUNTY PROJECT  
C-97-027-06

INDEX OF SHEETS

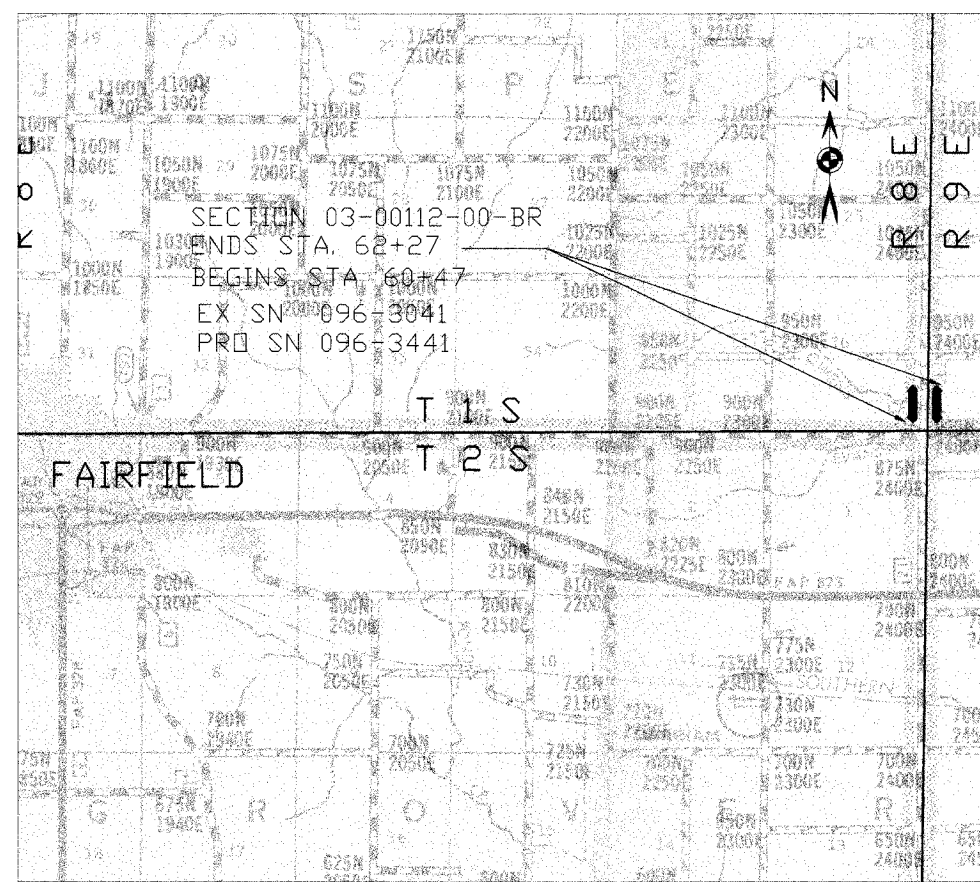
SHEET NO.	DESCRIPTION
1	COVER SHEET
2	PLAN - PROFILE
3	CROSS SECTIONS
4 - 10	BRIDGE PLANS

THE FOLLOWING STANDARDS ARE A PART OF THESE PLANS AND ARE INCLUDED AFTER SHEET NO. 10.

- 000001-04 STANDARD SYMBOLS, ABBREVIATIONS, AND PATTERNS
- 702001-06 TRAFFIC CONTROL DEVICES
- BLR 21-6 TYPICAL APPLICATION OF TRAFFIC CONTROL DEVICES

X081-2A

QUANTITY	UNIT	ITEM	CODE NO.
150.00	TON	BITUMINOUS CONCRETE SURFACE COURSE, SUPERPAVE, MIXTURE "C", N50	X4066414
200.00	CU YD	CHANNEL EXCAVATION	20300100
90.00	CU YD	FURNISHED EXCAVATION	20400800
0.10	ACRE	SEEDING, CLASS 2 (SPECIAL)	25001000
200.00	TON	STONE DUMPED RIPRAP, CLASS A4	28100807
40.00	TON	AGGREGATE SHOULDERS, TYPE B	48101200
1.00	EACH	REMOVAL OF EXISTING STRUCTURES	50100100
20.80	CU YD	CONCRETE STRUCTURES	50300225
1680.00	SQ FT	PRECAST PRESTRESSED CONCRETE DECK BEAMS (27" DEPTH)	50400505
2580.00	POUND	REINFORCEMENT BARS	50800105
120.00	FOOT	STEEL RAILING, TYPE S1	50900205
630.00	FOOT	FURNISHING STEEL PILES HP 10X57	51201500
630.00	FOOT	DRIVING STEEL PILES	51202700
1.00	EACH	TEST PILE STEEL HP 10X57	51203500
2.60	CU YD	CONCRETE ENCASEMENT	51204315
1.00	EACH	NAME PLATES	51500100
1.00	L SUM	MOBILIZATION	67100100
1.00	L SUM	TRAFFIC CONTROL AND PROTECTION STANDARD BLR 21	70101830



BEFORE DIGGING IN ILLINOIS  
...CALL JULIE FIRST AT 1-800-892-0123

JASPER WATER WORKS  
BILL YOUNG, OPERATOR  
CELL PHONE (618)237-0164  
HOME PHONE (618)842-2918

VERIZON  
225 EAST CHESTNUT ST.  
OLNEY, ILLINOIS  
BRIAN VANGUNDY, ENGINEER  
(618)395-6189

WAYNE / WHITE ELECTRIC COOP.  
ROUTE 45 WEST  
FAIRFIELD, ILLINOIS  
AARON HAWLEY, ENGINEER  
(618)-842-2196

FUNCTIONAL CLASS:

RURAL LOCAL ROAD  
ADT = 250  
DESIGN SPEED = 40 MPH  
EXISTING STRUCTURE NO. 096-3041  
PROPOSED STRUCTURE NO. 096-3441

CONTRACT NO. 95463

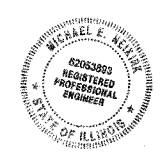
GROSS LENGTH	180.0	FEET	0.034	MILES
OMISSIONS	0.00	FEET	0.00	MILES
NET LENGTH	180.0	FEET	0.034	MILES



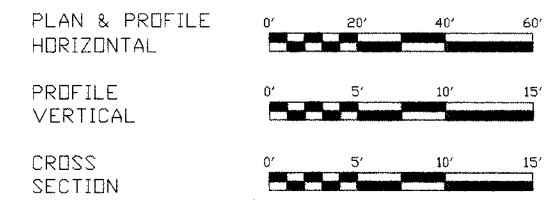
*Michael Eugene Neikirk*  
MICHAEL EUGENE NEIKIRK  
ILL. REG. PROF. ENGINEER

062-053893  
REG. NO.  
EXPIRES 11-30-2007

1/11/06  
DATE



SCALES



APPROVED	JAN. 11 20 06
	<i>Arthur J. Barbach</i> COUNTY ENGINEER
PASSED	2/24 20 06
	<i>Michael J. Carr</i> DISTRICT SEVEN ENGINEER OF LOCAL ROADS & STREETS
Releasing For Bid Based on Limited Review	2/24 20 06
	<i>Christie M. Reed</i> DEPUTY DIRECTOR OF HIGHWAYS, REGION FOUR ENGINEER, STATE OF ILLINOIS DEPARTMENT OF TRANSPORTATION