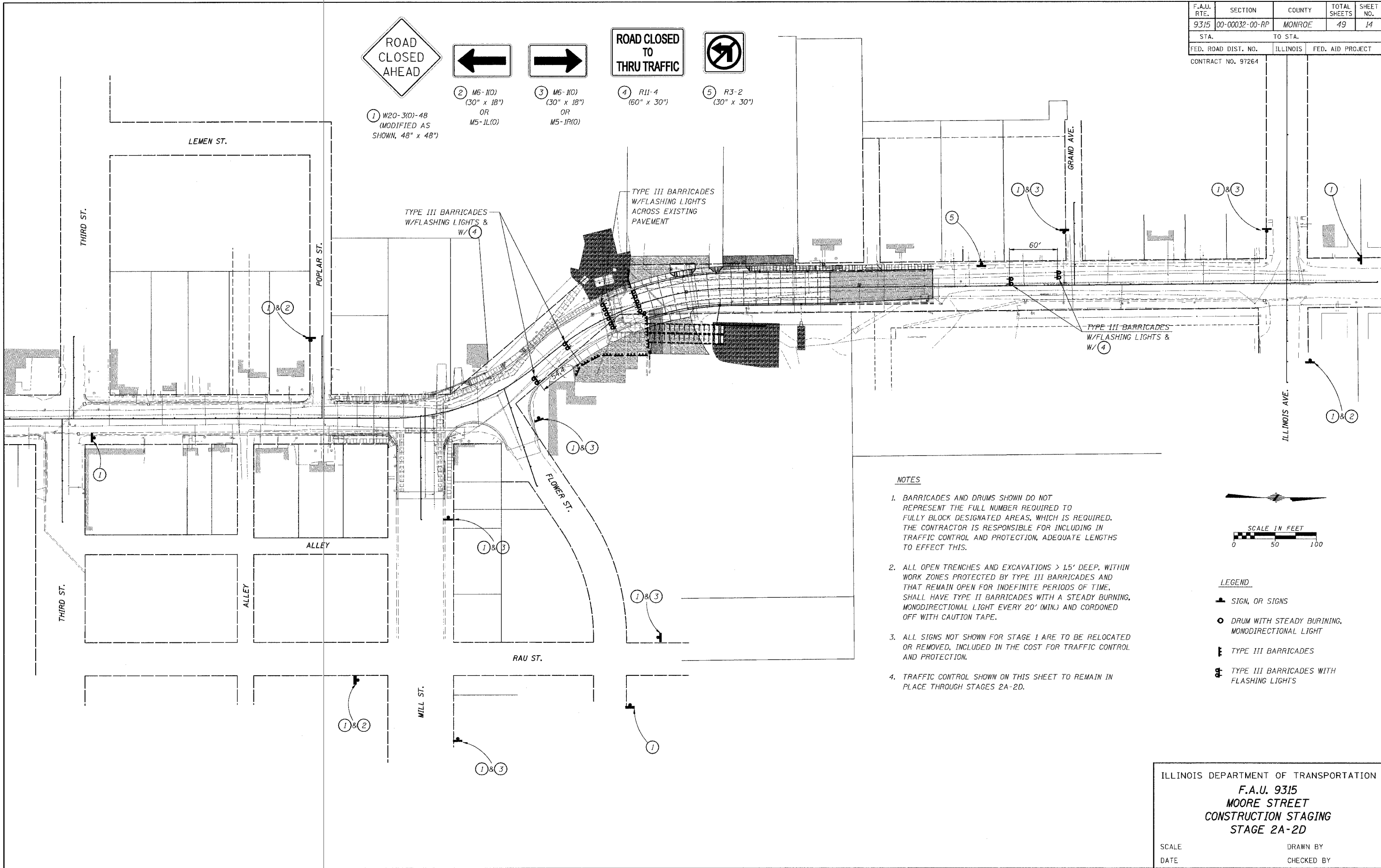
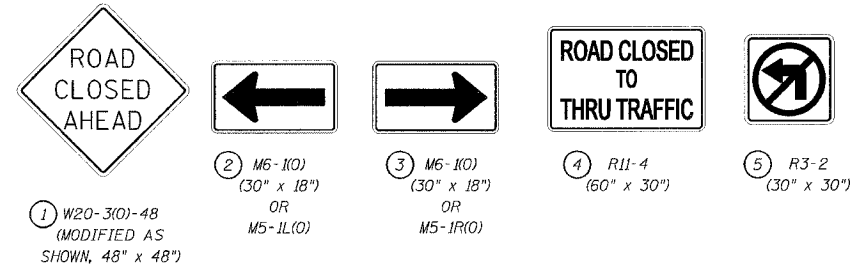


| | | | | |
|---------------------|----------------|------------------|--------------|-----------|
| F.A.U. RTE. | SECTION | COUNTY | TOTAL SHEETS | SHEET NO. |
| 9315 | 00-00032-00-RP | MONROE | 49 | 14 |
| STA. | TO STA. | | | |
| FED. ROAD DIST. NO. | ILLINOIS | FED. AID PROJECT | | |
| CONTRACT NO. 97264 | | | | |



NOTES

1. BARRICADES AND DRUMS SHOWN DO NOT REPRESENT THE FULL NUMBER REQUIRED TO FULLY BLOCK DESIGNATED AREAS, WHICH IS REQUIRED. THE CONTRACTOR IS RESPONSIBLE FOR INCLUDING IN TRAFFIC CONTROL AND PROTECTION, ADEQUATE LENGTHS TO EFFECT THIS.
2. ALL OPEN TRENCHES AND EXCAVATIONS > 1.5' DEEP, WITHIN WORK ZONES PROTECTED BY TYPE III BARRICADES AND THAT REMAIN OPEN FOR INDEFINITE PERIODS OF TIME, SHALL HAVE TYPE II BARRICADES WITH A STEADY BURNING, MONODIRECTIONAL LIGHT EVERY 20' (MIN.) AND CORDONED OFF WITH CAUTION TAPE.
3. ALL SIGNS NOT SHOWN FOR STAGE 1 ARE TO BE RELOCATED OR REMOVED, INCLUDED IN THE COST FOR TRAFFIC CONTROL AND PROTECTION.
4. TRAFFIC CONTROL SHOWN ON THIS SHEET TO REMAIN IN PLACE THROUGH STAGES 2A-2D.



LEGEND

- SIGN, OR SIGNS
- DRUM WITH STEADY BURNING, MONODIRECTIONAL LIGHT
- ▬ TYPE III BARRICADES
- ▬ TYPE III BARRICADES WITH FLASHING LIGHTS

ILLINOIS DEPARTMENT OF TRANSPORTATION
F.A.U. 9315
MOORE STREET
CONSTRUCTION STAGING
STAGE 2A-2D

SCALE _____ DRAWN BY _____
DATE _____ CHECKED BY _____

CADD FILE: 4690/FTB9102-4690.dgn
PLOTTED: 10/24/2005

H.M. & G. NO. 4690