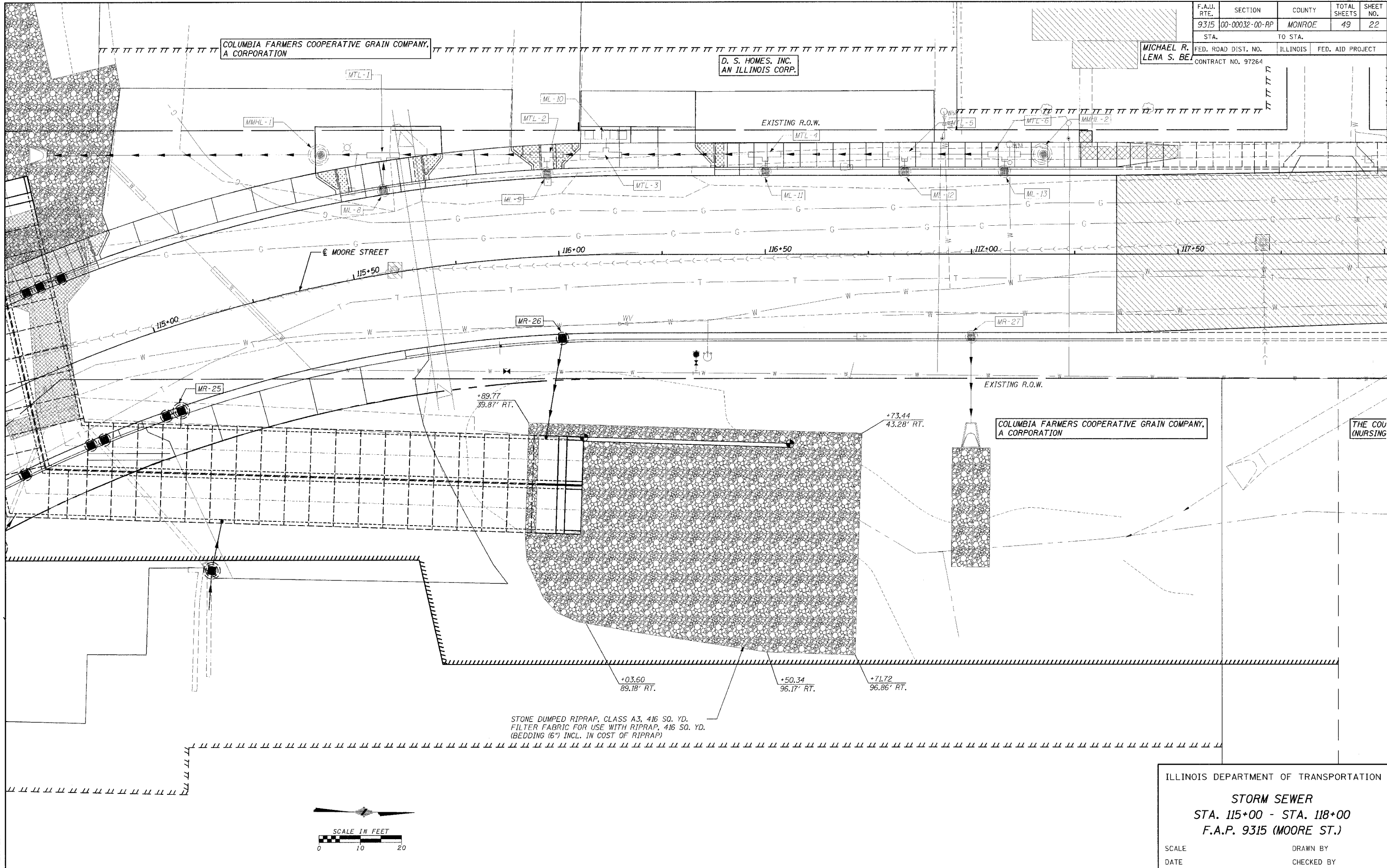


F.A.P. RTE.	SECTION	COUNTY	TOTAL SHEETS	SHEET NO.
9315	00-00032-00-RP	MONROE	49	22
STA.		TO STA.		
FED. ROAD DIST. NO.		ILLINOIS	FED. AID PROJECT	
CONTRACT NO. 97264				



STONE DUMPED RIPRAP, CLASS A3, 416 SQ. YD.  
 FILTER FABRIC FOR USE WITH RIPRAP, 416 SQ. YD.  
 (BEDDING 6" INCL. IN COST OF RIPRAP)

ILLINOIS DEPARTMENT OF TRANSPORTATION

**STORM SEWER**  
**STA. 115+00 - STA. 118+00**  
**F.A.P. 9315 (MOORE ST.)**

SCALE \_\_\_\_\_ DATE \_\_\_\_\_ DRAWN BY \_\_\_\_\_ CHECKED BY \_\_\_\_\_

CADD FILE: /1680/FBS56P680.DGN  
 PLOTTED: 10/24/2005

H.M. & G. NO. 4690