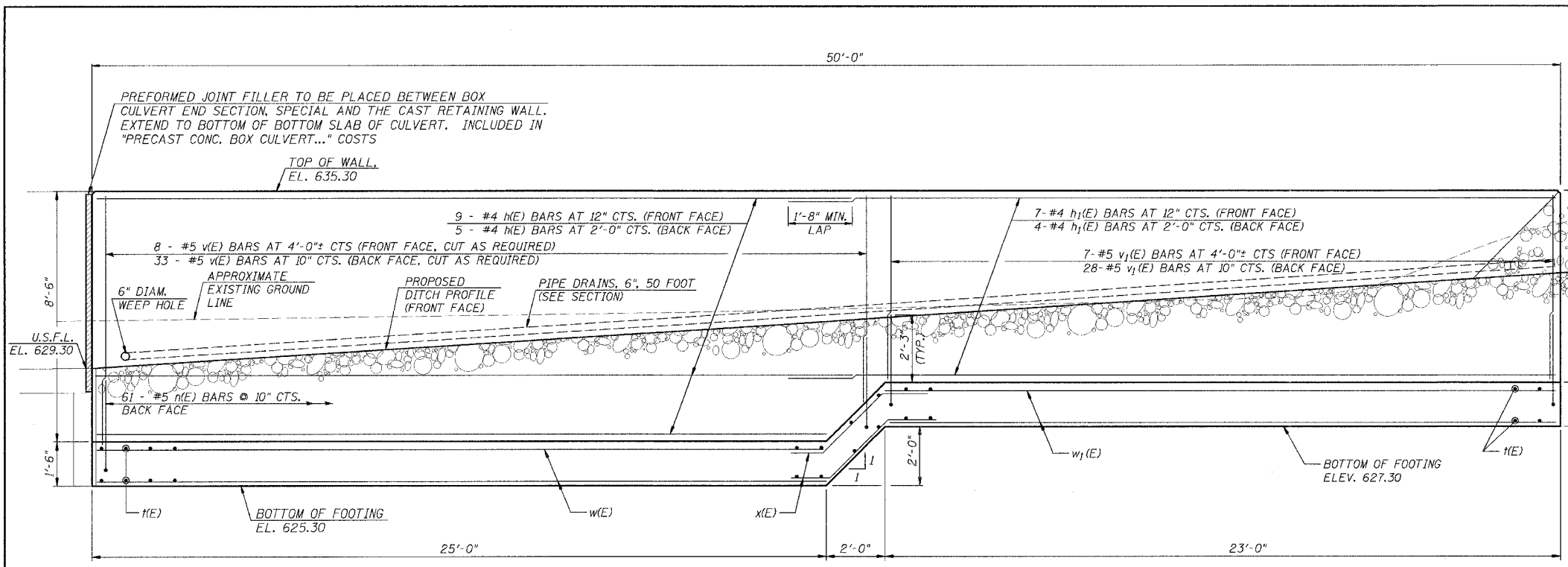
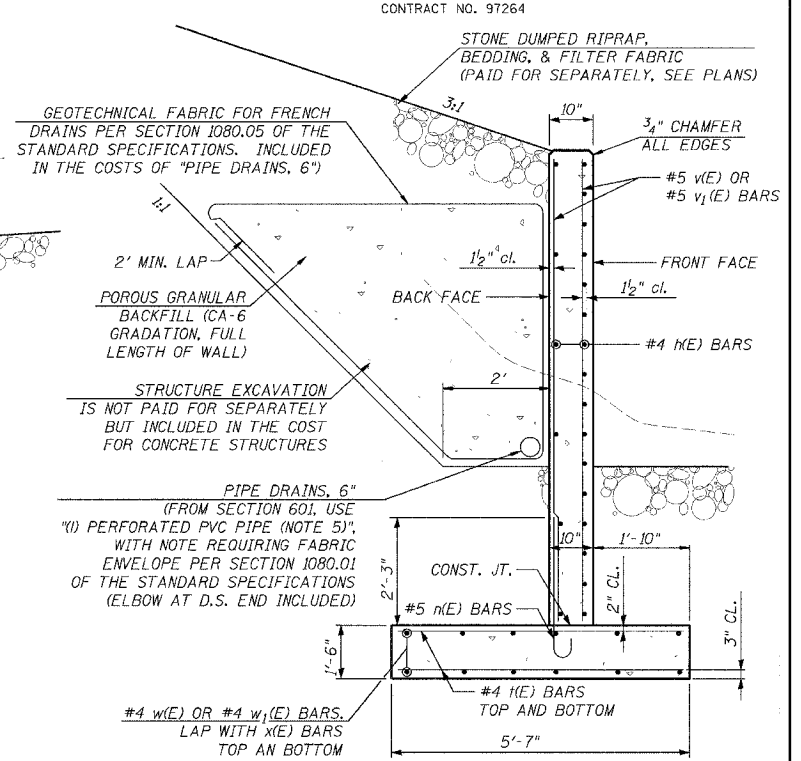


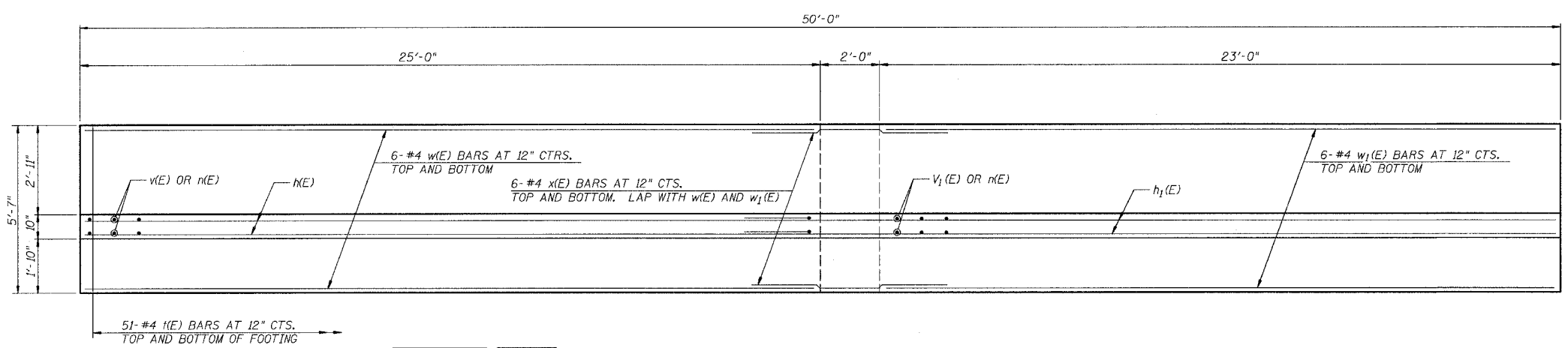
F.A.U. RTE.	SECTION	COUNTY	TOTAL SHEETS	SHEET NO.
9315	00-00032-00-RP	MONROE	49	29
STA.	TO STA.			
FED. ROAD DIST. NO.	ILLINOIS	FED. AID PROJECT		
CONTRACT NO. 97264				



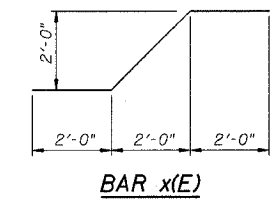
ELEVATION



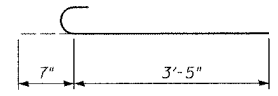
SECTION



PLAN



BAR x(E)



BAR n(E)

RETAINING WALL BILL OF MATERIAL

BAR	NO.	SIZE	LENGTH	SHAPE
h(E)	14	#4	24'-10"	—
h1(E)	11	#4	27'-0"	—
n(E)	61	#5	4'-0"	C
h(E)	102	#4	5'-4"	—
v(E)	41	#5	8'-3"	—
v1(E)	35	#5	6'-3"	—
w(E)	12	#4	24'-10"	—
w1(E)	12	#4	22'-10"	—
x(E)	12	#4	6'-10"	—
POROUS GRANULAR BACKFILL			CU. YD.	24.0
GEOTECHNICAL FABRIC FOR FRENCH DRAINS			SQ. YD.	96.0
CONCRETE STRUCTURES			CU. YD.	27.4
REINFORCEMENT BARS, EPOXY COATED			POUND	2,070
PIPE DRAINS, 6"			FOOT	50.0
ANTI-GRAFFITI PROTECTION SYSTEM			SQ. FT.	346.0

RETAINING WALL
 F.A.U. 9315 OVER DOUBLE
 10'x6' CONCRETE BOX CULVERT
 SECTION 00-00032-01-RP
 MONROE COUNTY
 S.N. 067-6008

4680/STRUCT-3.dgn CRW SEPT. 2, 2003

DESIGNED:	B.G.H.
CHECKED:	L.D.G.
DRAWN:	K.O.J./C.R.W.
CHECKED:	B.G.H.