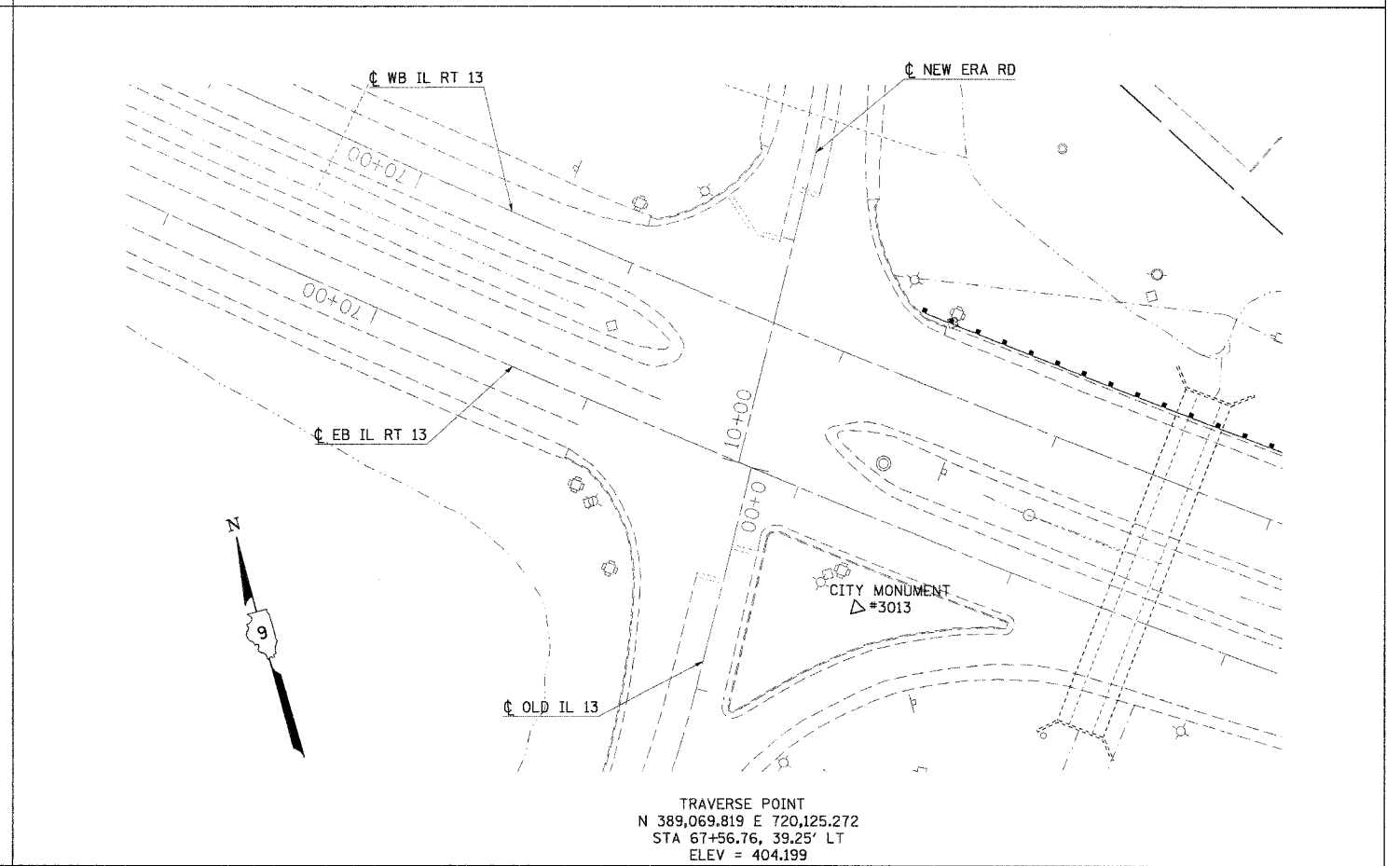
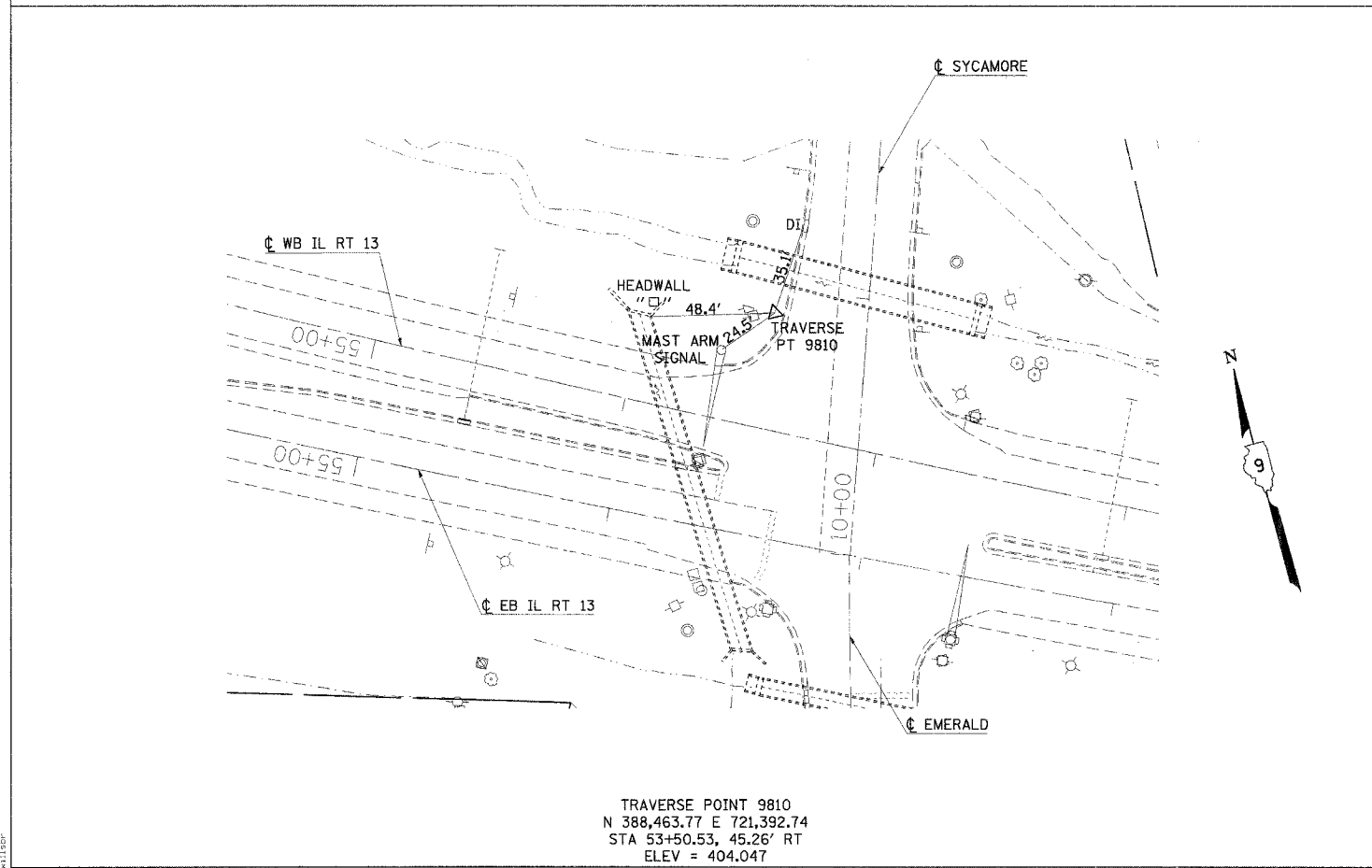
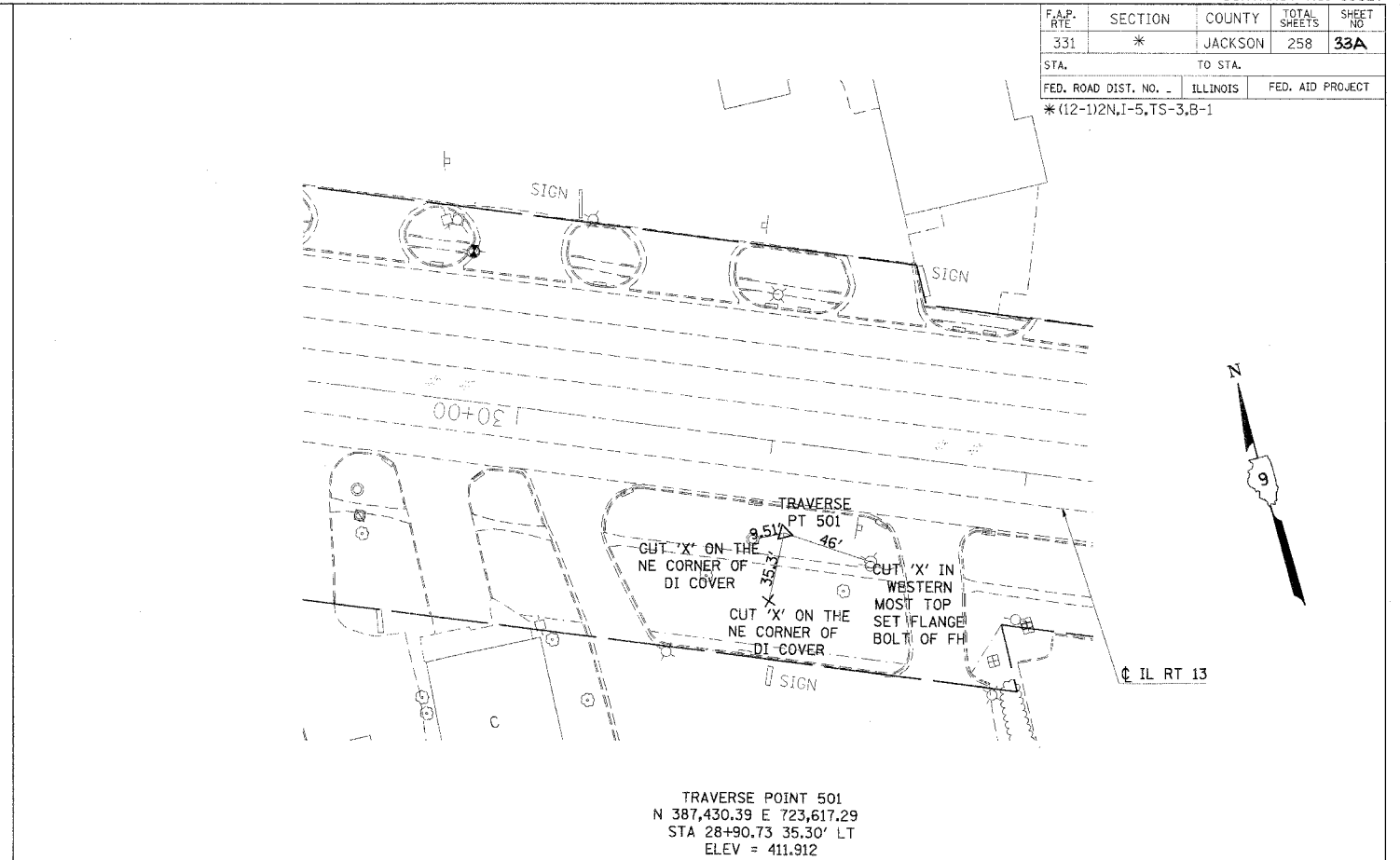
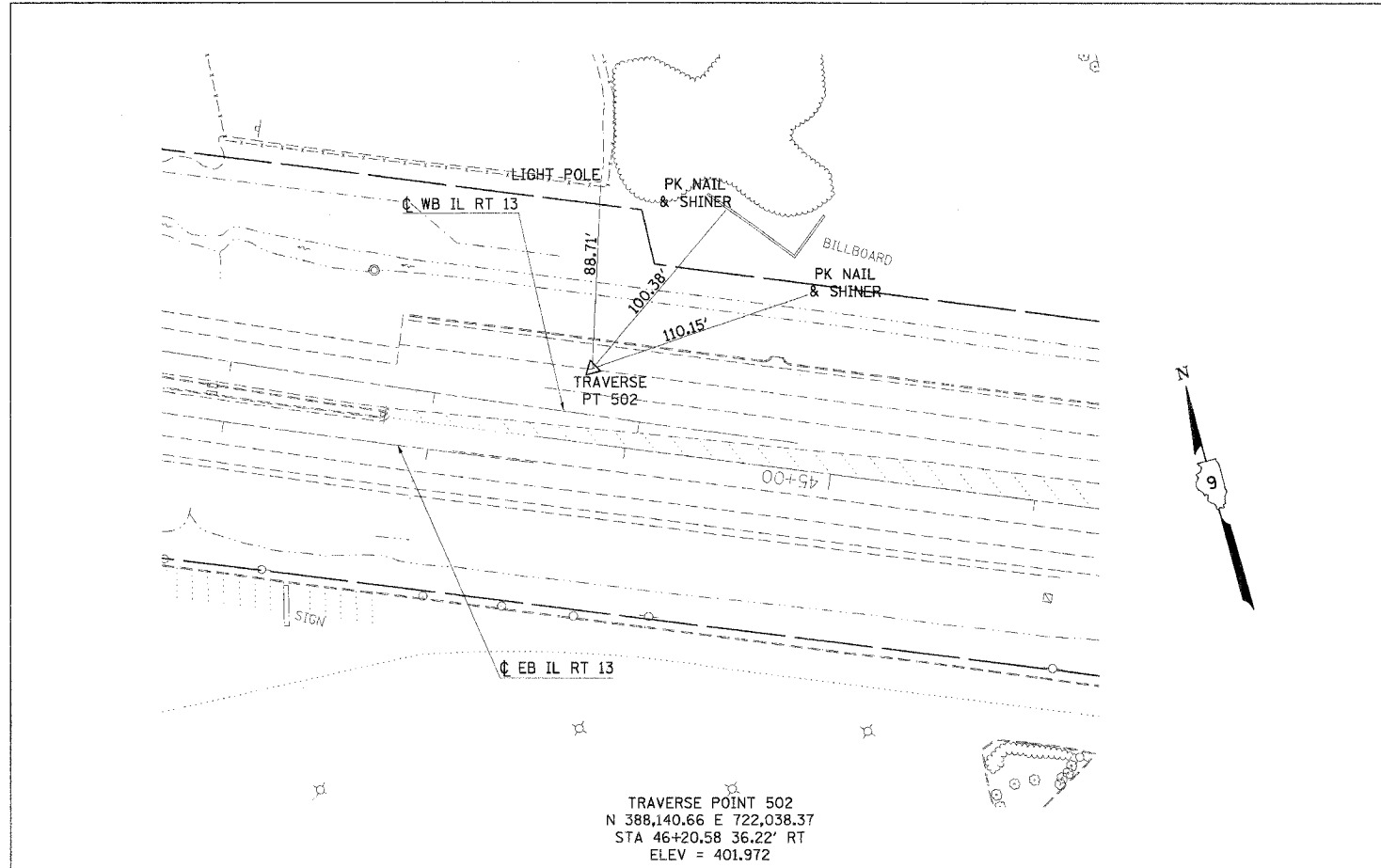


F.A.P. RTE.	SECTION	COUNTY	TOTAL SHEETS	SHEET NO.
331	*	JACKSON	258	33A
STA. TO STA.		ILLINOIS		
FED. ROAD DIST. NO. -		FED. AID PROJECT		
*(12-1)2N, I-5, TS-3, B-1				



2/15/2006
 s:\projects\98827\98827.dwg
 7' x 11'