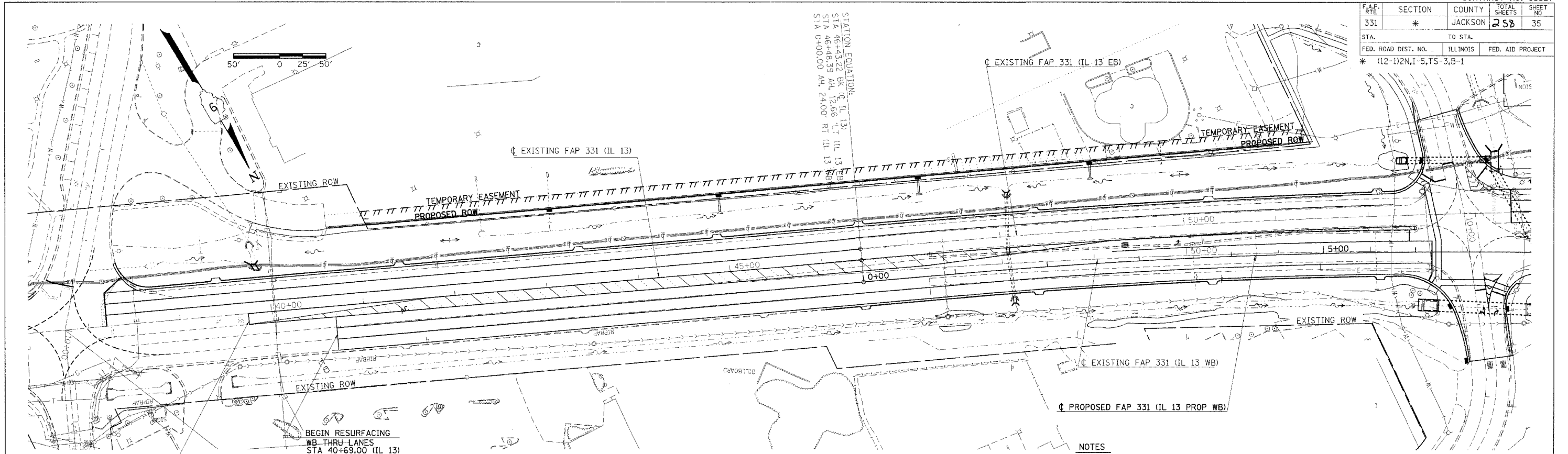
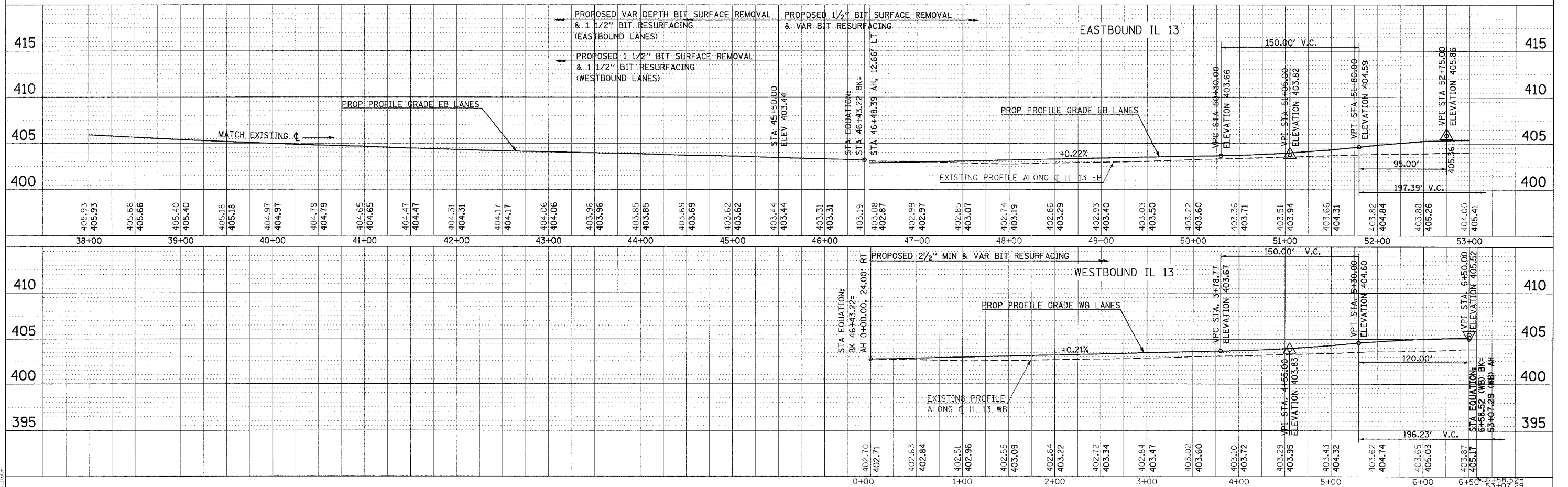


F.A.P. RTE	SECTION	COUNTY	TOTAL SHEETS	SHEET NO
331	*	JACKSON	258	35
STA. TO STA.		ILLINOIS		
FED. ROAD DIST. NO. -		FED. AID PROJECT		
* (12-1)2N, I-5, TS-3, B-1				



NOTES

REFER TO GEOMETRICS SHEET 58-59 FOR HORIZONTAL CURVE DATA.



PLAN PROFILE - IL 13 EB & WB STA 38+00.00 TO 53+00.00

2/15/2006
 ct:\proj\98827\98827.dwg
 50.0000' / IN
 11.152