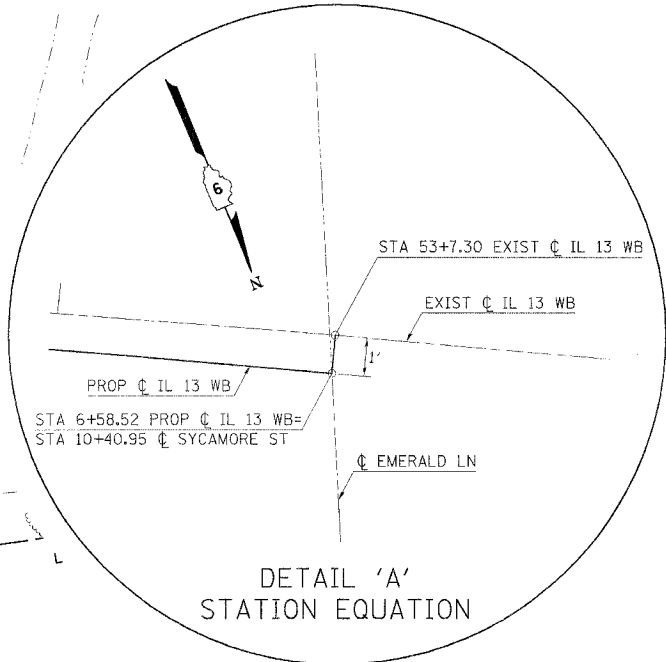
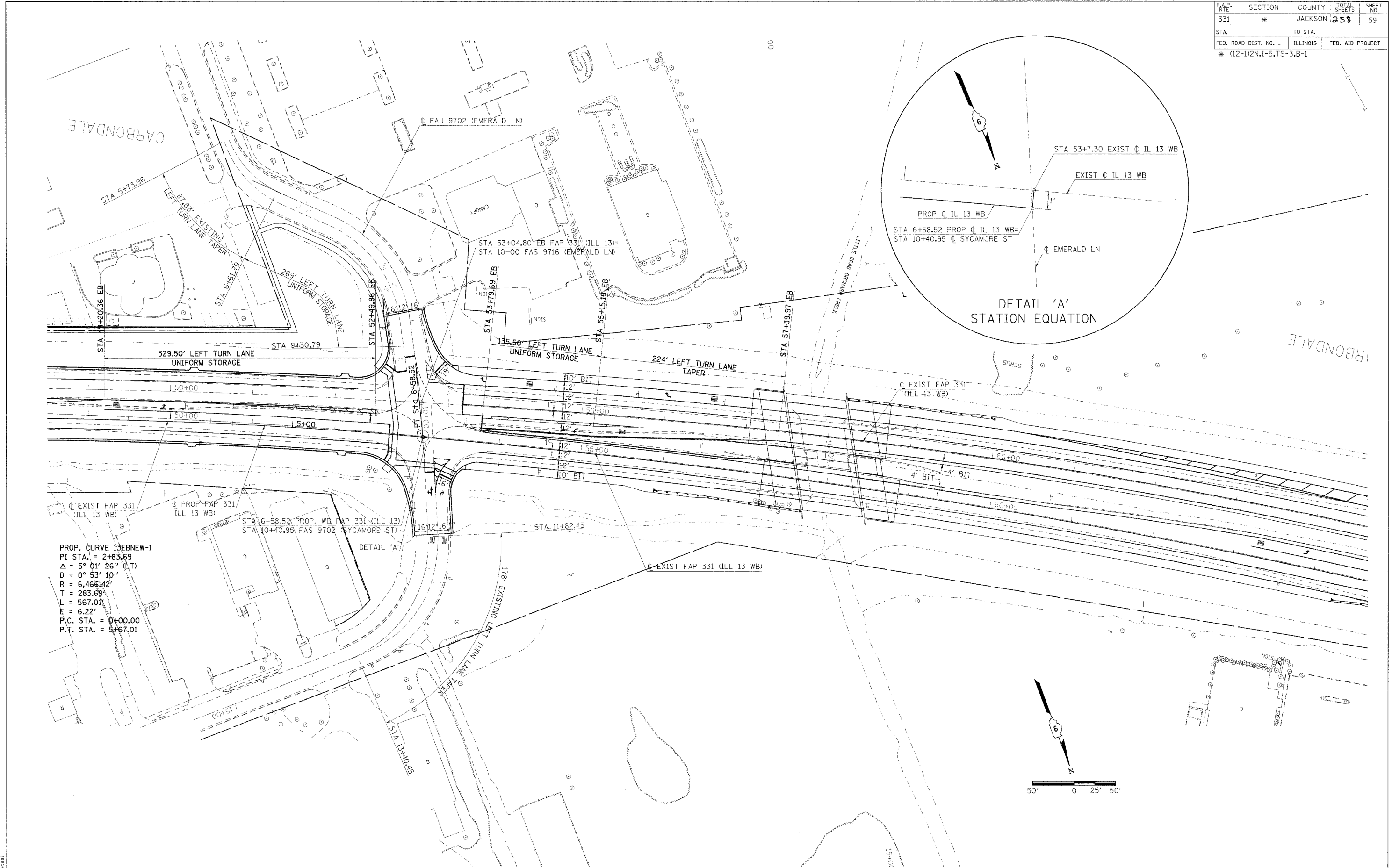
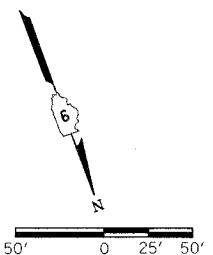


F.A.P. NO.	SECTION	COUNTY	TOTAL SHEETS	SHEET NO.
331	*	JACKSON	258	59
STA. TO STA.		ILLINOIS FED. AID PROJECT		
* (12-1)2N,1-5,TS-3,B-1				



PROP. CURVE 13EBNEW-1
 PI STA. = 2+83.69
 $\Delta = 5^\circ 01' 26''$ (I.T.)
 $D = 0^\circ 53' 10''$
 $R = 6,466.42'$
 $T = 283.69'$
 $L = 567.01'$
 $E = 6.22'$
 P.C. STA. = 0+00.00
 P.T. STA. = 5+67.01



2/14/2005
 c:\projects\10044823\10044823.dgn
 5/2/05 11:17 AM
 pms1