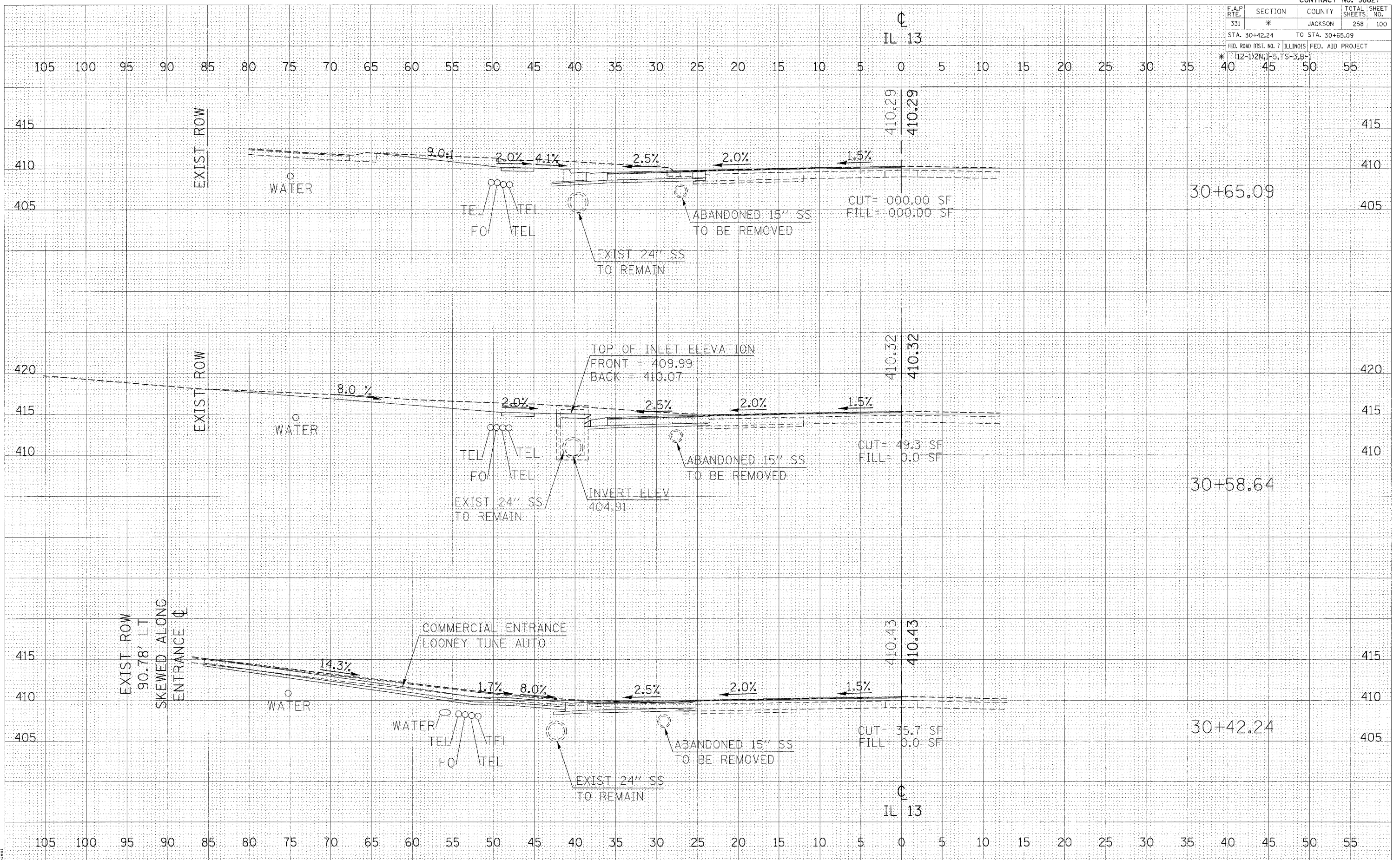


F.A.P. RTE.	SECTION	COUNTY	TOTAL SHEET SHEETS NO.
331	*	JACKSON	258 100
STA. 30+42.24		TO STA. 30+65.09	
FED. ROAD DIST. NO. 7 ILLINOIS FED. AID PROJECT			
* (12-12N, 1-5, TS-3, B-1)			

DATE	BY
DATE	BY
DATE	BY

DATE	BY
DATE	BY
DATE	BY



2/15/2005  
 20050215 11:44:40 AM  
 20050215.dwg  
 1/14