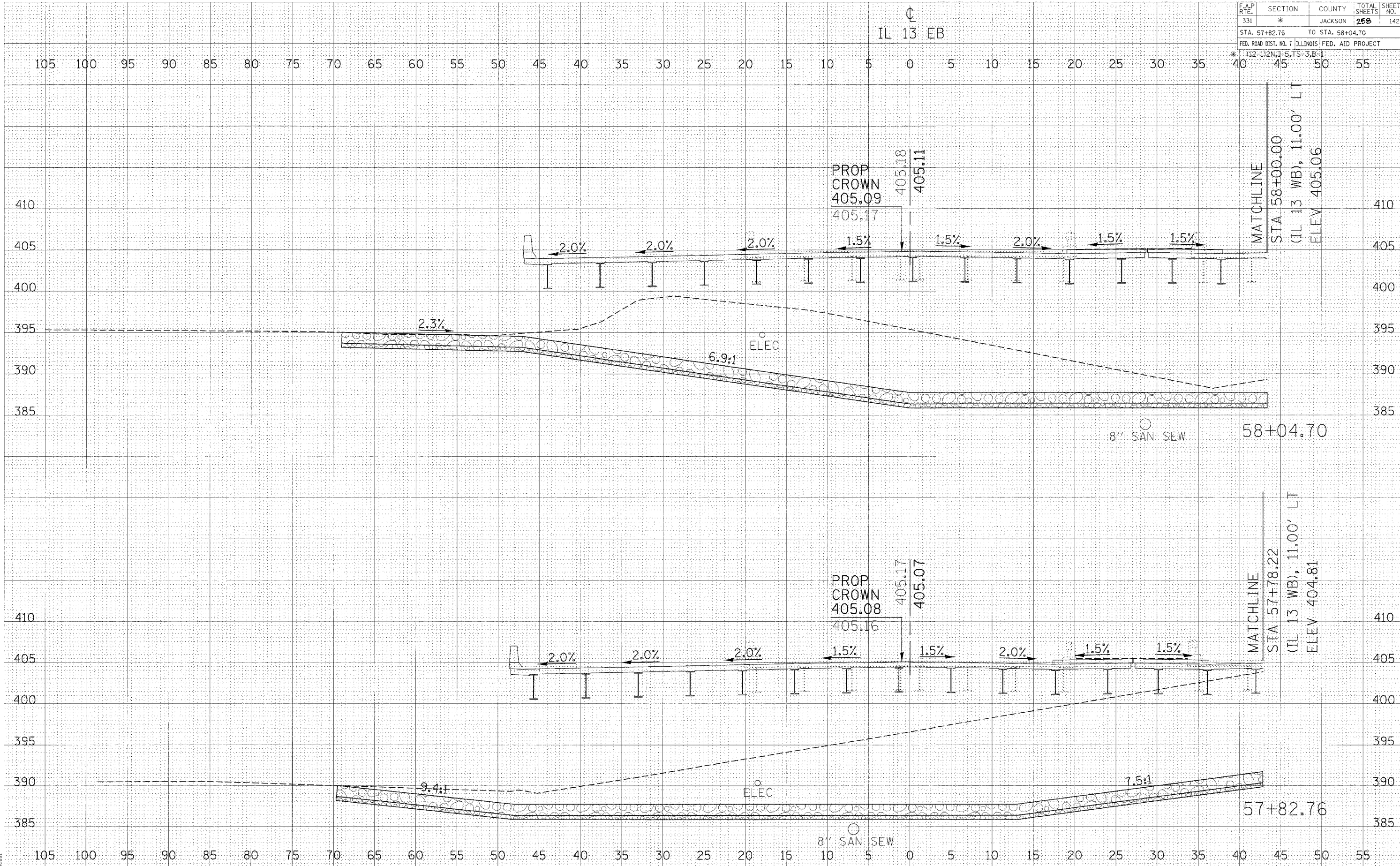


F.A.P. RTE.	SECTION	COUNTY	TOTAL SHEETS	SHEET NO.
331	*	JACKSON	258	142
STA. 57+82.76		TO STA. 58+04.70		
FED. ROAD DIST. NO. 7 ILLINOIS FED. AID PROJECT				
* (12-1)2N, 1-5, 15-3, B-1				

IL 13 EB

DATE	BY
DATE	BY
DATE	BY
DATE	BY
DATE	BY

DATE	BY
DATE	BY
DATE	BY
DATE	BY
DATE	BY



2/15/2006  
 5:00 PM  
 5:00 PM  
 5:00 PM

CROSS SECTIONS - IL 13 EB