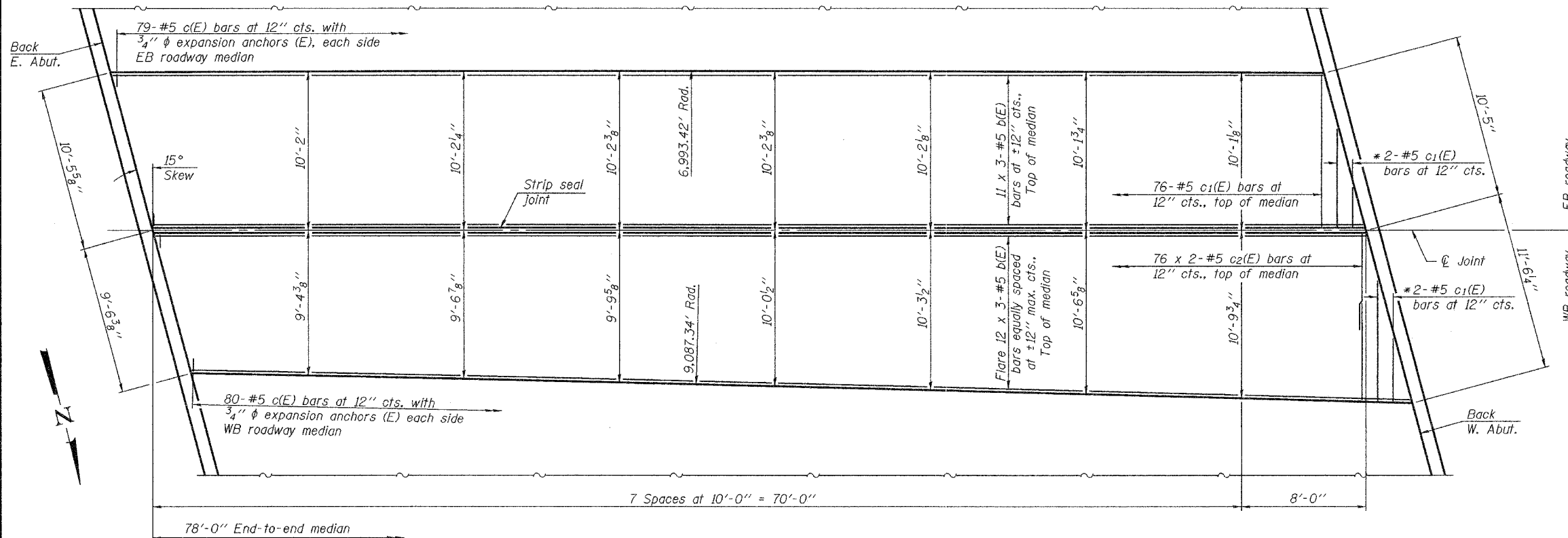


STATE OF ILLINOIS
DEPARTMENT OF TRANSPORTATION

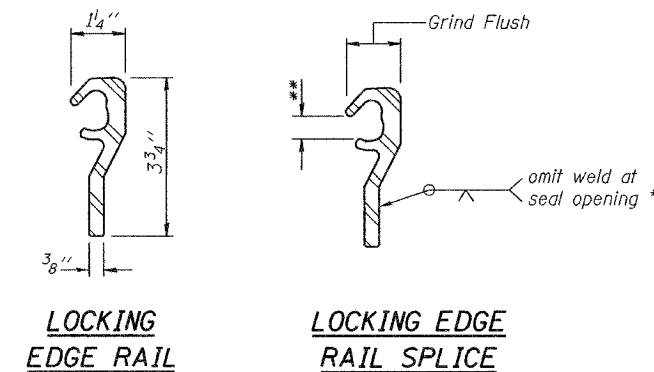
ROUTE NO. F.A.P. 331	SECTION (12-1) B-1	COUNTY JACKSON	SHEET NO. 239	SHEET NO. 14 32 SHEETS
FED. ROAD DIST. NO. 7		ILLINOIS FED. AID PROJECT		

Contract #98827



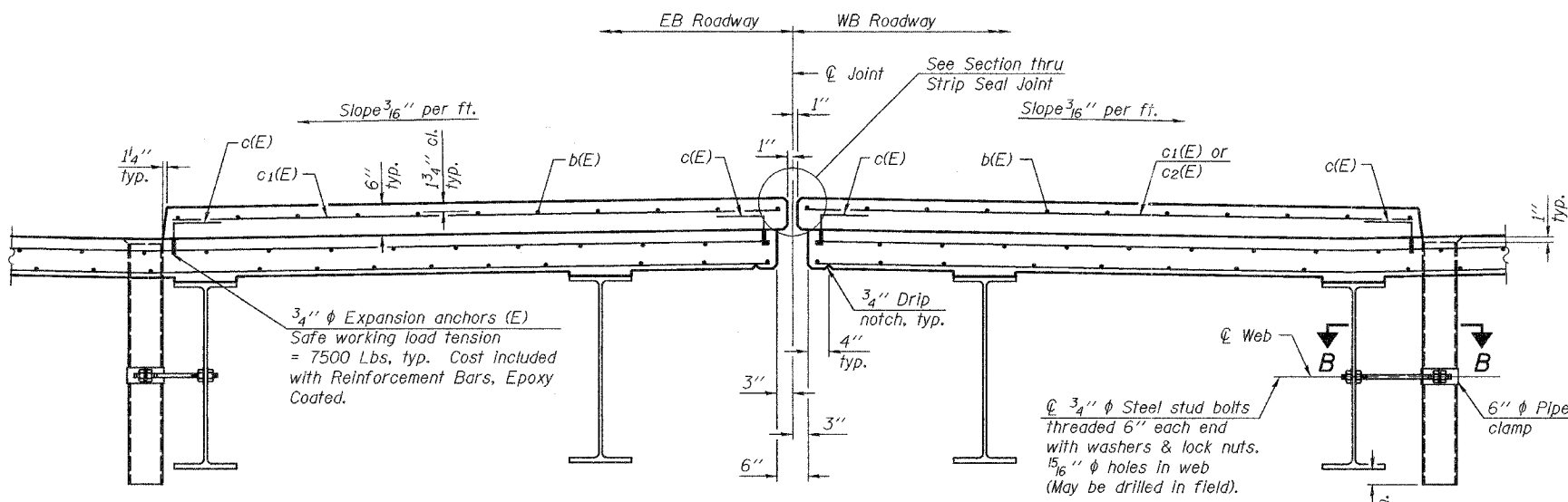
* Order c1(E) bars full length. Cut to fit skew and use remainder of bars in opposite end.

MEDIAN PLAN

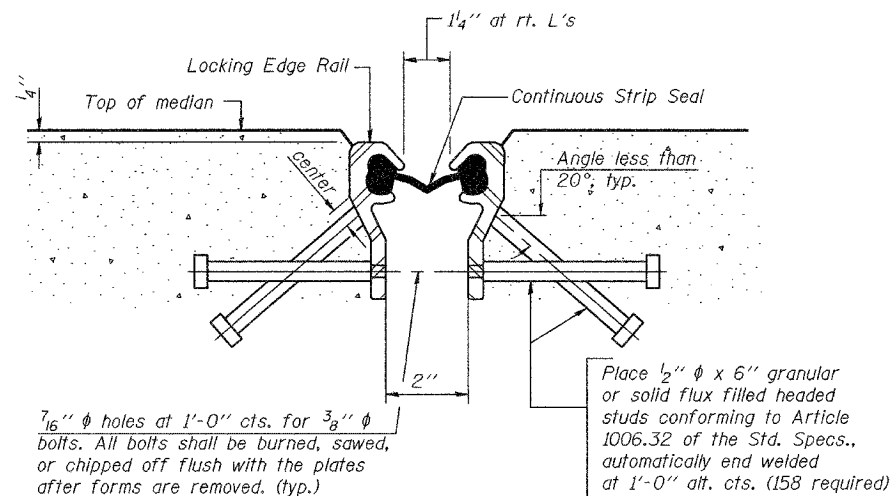


LOCKING EDGE RAIL
LOCKING EDGE RAIL SPLICE
The inside of the Locking Edge Rail groove shall be free of weld residue.

Notes:
The strip seal shall be made continuous and shall have a minimum thickness of 1/4". The configuration of the strip seal shall match the configuration of the Locking Edge Rails.
The height and thickness of the Locking Edge Rails shown are minimum dimensions. The actual configuration of the Locking Edge Rails and matching strip seal may vary from manufacturer to manufacturer. Flanged edge rails will not be allowed.
Locking Edge Rails may be spliced at slope discontinuities and stage construction joints.
The manufacturer's recommended installation methods shall be followed.
See sheet 15 of 32 for Section B-B and additional drain details.



SECTION THRU MEDIAN
(Looking West)



SECTION THRU STRIP SEAL JOINT

BILL OF MATERIAL

Item	Unit	Total
Preformed Joint Strip Seal	Foot	78.0

MINIMUM BAR LAP
(Median)
#5 bar = 2'-2"

DESIGNED Curt M. Evoy
CHECKED Rebecca L. Mitchell
DRAWN Michael B. Mossman
CHECKED C.M.E. / R.L.M.

March 1, 2006
EXAMINED <i>Thomas J. Domagala</i>
PASSED <i>Ralph E. Anderson</i>
ENGINEER OF BRIDGES AND STRUCTURES

SUPERSTRUCTURE DETAILS
F.A.P. ROUTE 331 - SEC. (12-1)B-1
JACKSON COUNTY
STATION 57+91.70
STRUCTURE NO. 039-0071