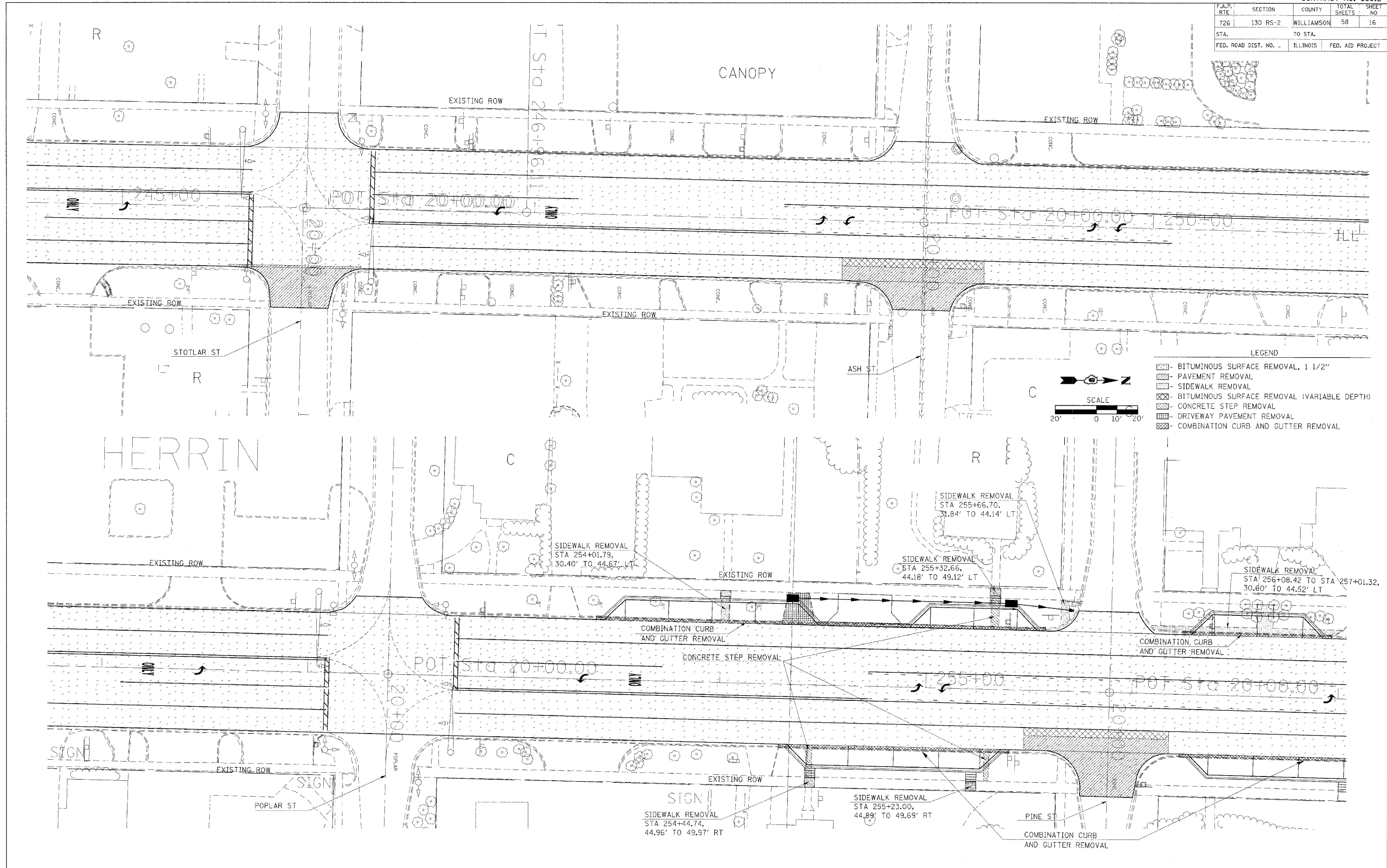
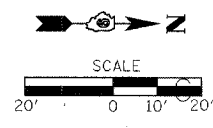


F.A.P. RTE	SECTION	COUNTY	TOTAL SHEETS	SHEET NO.
726	130 RS-2	WILLIAMSON	58	16
STA.		TO STA.		
FED. ROAD DIST. NO.		ILLINOIS	FED. AID PROJECT	



- LEGEND
- [Hatched Pattern 1] BITUMINOUS SURFACE REMOVAL, 1 1/2"
  - [Hatched Pattern 2] PAVEMENT REMOVAL
  - [Hatched Pattern 3] SIDEWALK REMOVAL
  - [Hatched Pattern 4] BITUMINOUS SURFACE REMOVAL (VARIABLE DEPTH)
  - [Hatched Pattern 5] CONCRETE STEP REMOVAL
  - [Hatched Pattern 6] DRIVEWAY PAVEMENT REMOVAL
  - [Hatched Pattern 7] COMBINATION CURB AND GUTTER REMOVAL



PLOT DATE = 3/24/2006  
 FILE NAME = c:\puro\puro\98912\98912.dwg  
 PLOT SCALE = 1/8" = 1'-0"  
 USER NAME = blaircjb

Rev. Sheet 4-10-06

**PROPOSED REMOVAL**