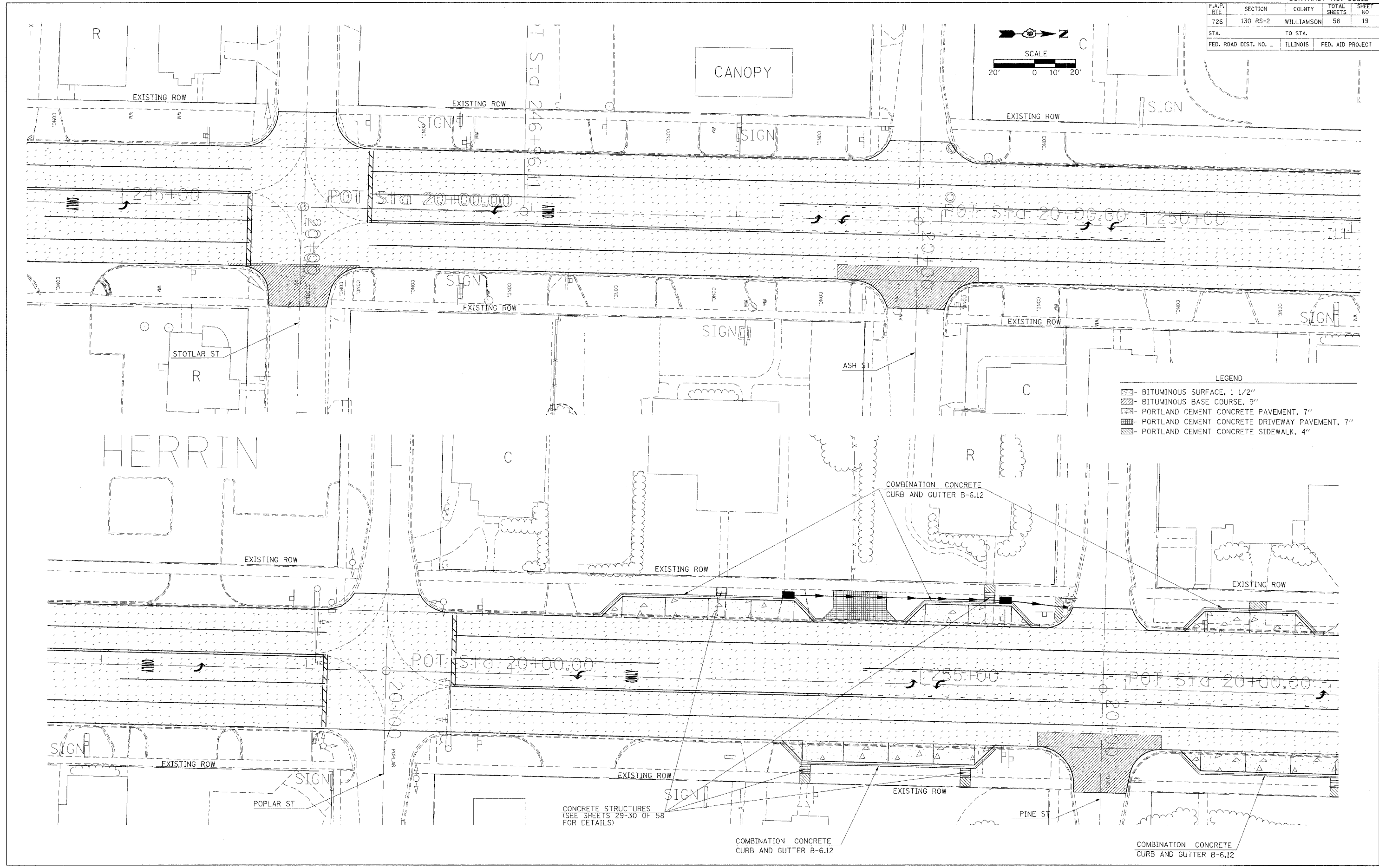
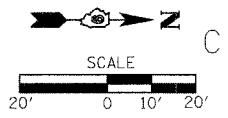


| F.A.P. RTE | SECTION | COUNTY | TOTAL SHEETS | SHEET NO |
|---------------------|----------|------------------|--------------|----------|
| 726 | 130 RS-2 | WILLIAMSON | 58 | 19 |
| STA. | TO STA. | | | |
| FED. ROAD DIST. NO. | ILLINOIS | FED. AID PROJECT | | |



- LEGEND
- BITUMINOUS SURFACE, 1 1/2"
 - BITUMINOUS BASE COURSE, 9"
 - PORTLAND CEMENT CONCRETE PAVEMENT, 7"
 - PORTLAND CEMENT CONCRETE DRIVEWAY PAVEMENT, 7"
 - PORTLAND CEMENT CONCRETE SIDEWALK, 4"

CONCRETE STRUCTURES
(SEE SHEETS 29-30 OF 58
FOR DETAILS)

COMBINATION CONCRETE
CURB AND GUTTER B-6.12

COMBINATION CONCRETE
CURB AND GUTTER B-6.12

PLOT DATE = 3/27/2006
FILE NAME = c:\p\proj\98912\98912.dwg
PLOT SCALE = 28.0000 / 1" = 100.0000'
USER NAME = carltonj