

F.A.P. RTE.	SECTION	COUNTY	TOTAL SHEETS	SHEET NO.
726	130 RS-2	WILLIAMSON	58	3
STA.		TO STA.		
FED. ROAD DIST. NO.	ILLINOIS	FED. AID PROJECT		

SUMMARY OF QUANTITIES

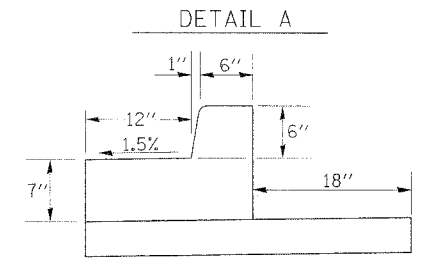
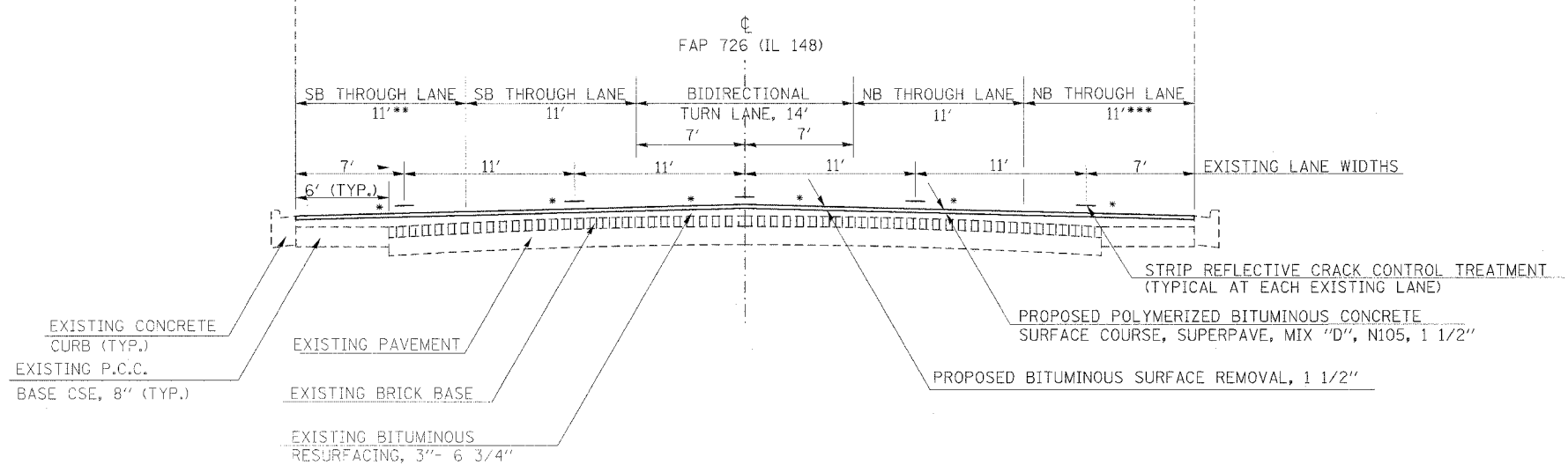
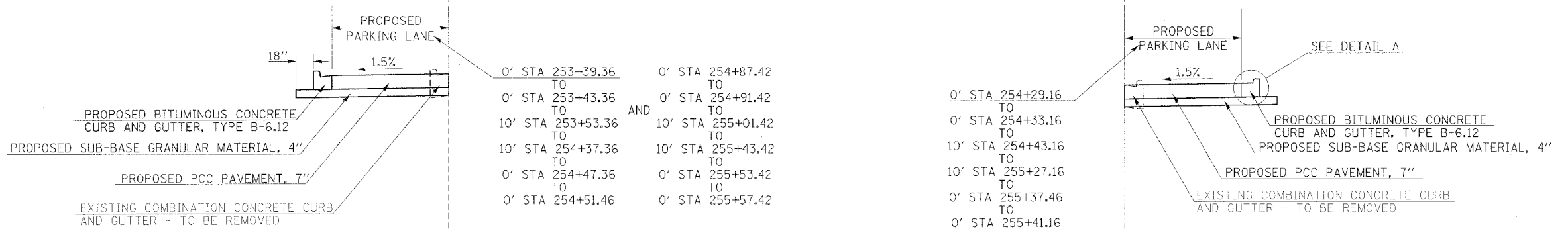
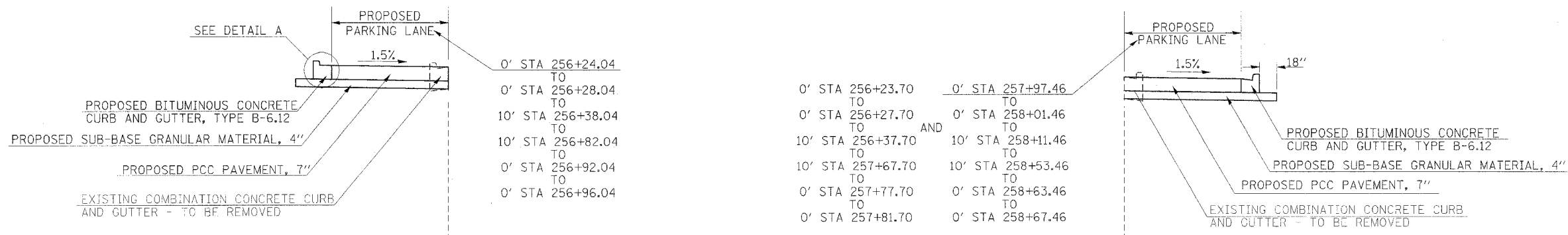
CODE NO	ITEM	CONSTRUCTION TYPE CODE	1000-1A	
			URBAN ROADWAY	HES SAFETY
		UNIT	FED STATE	90% 10%
X0300351	CONCRETE STEP REMOVAL	EACH	3	
X4066530	POLYMERIZED BITUMINOUS CONCRETE SURFACE COURSE, SUPERPAVE, MIX "D", N105	TONS	1,700	
X7015000	CHANGEABLE MESSAGE SIGN	CAL MO	1	
20200100	EARTH EXCAVATION	CU YD	393	△
20800150	TRENCH BACKFILL	CU YD	107	
25100630	EROSION CONTROL BLANKET	SQ YD	471	
31100300	SUB-BASE GRANULAR MATERIAL, TYPE A 4"	SQ YD	1288	
35500600	BITUMINOUS BASE COURSE 9"	SQ YD	404	
40600100	BITUMINOUS MATERIALS (PRIME COAT)	GALLON	1,899	
40800040	INCIDENTAL BITUMINOUS SURFACING	TON	74	
40600300	AGGREGATE (PRIME COAT)	TON	32	
40600990	TEMPORARY RAMP	SQ YD	72	
42000200	PORTLAND CEMENT CONCRETE PAVEMENT, 7"	SQ YD	542	
42001200	PAVEMENT FABRIC	SQ YD	542	
42001300	PROTECTIVE COAT	SQ YD	806	△
42300300	PORTLAND CEMENT CONCRETE DRIVEWAY PAVEMENT, 7 INCH	SQ YD	103	
42400100	PORTLAND CEMENT CONCRETE SIDEWALK 4 INCH	SQ FT	210	
44000006	BITUMINOUS SURFACE REMOVAL 1 1/2"	SQ YD	20,603	
44000030	BITUMINOUS SURFACE REMOVAL (VARIABLE DEPTH)	SQ YD	88	
44000100	PAVEMENT REMOVAL	SQ YD	404	
44000200	DRIVEWAY PAVEMENT REMOVAL	SQ YD	80	
44000500	COMBINATION CURB AND GUTTER REMOVAL	FOOT	684	
44000600	SIDEWALK REMOVAL	SQ FT	562	
44201811	CLASS D PATCHES, TYPE I, 14 INCH	SQ YD	69	
44201815	CLASS D PATCHES, TYPE II, 14 INCH	SQ YD	217	
44201819	CLASS D PATCHES, TYPE III, 14 INCH	SQ YD	33	
44201821	CLASS D PATCHES, TYPE IV, 14 INCH	SQ YD	90	
44300200	STRIP REFLECTIVE CRACK CONTROL TREATMENT	FOOT	15,650	
50300225	CONCRETE STRUCTURES	CU YD	4	
50800205	REINFORCEMENT BARS, EPOXY COATED	POUND	250	
54248510	CONCRETE COLLAR	CU YD	0.32	
550A0050	STORM SEWERS, CLASS A, TYPE 1, 12"	FOOT	340	△
60243500	INLETS, SPECIAL, TYPE 3, 6'	EACH	4	
60300305	FRAMES AND LIDS TO BE ADJUSTED	EACH	1	
60603800	COMBINATION CONCRETE CURB AND GUTTER, TYPE B-6. 12	FOOT	738	
67000400	ENGINEER'S FIELD OFFICE, TYPE A	CAL MO	3	
67100100	MOBILIZATION	L SUM	1	
70101830	TRAFFIC CONTROL AND PROTECTION, STANDARD BLR 21	L SUM	1	
70102620	TRAFFIC CONTROL AND PROTECTION, STANDARD 701501	L SUM	1	
70102625	TRAFFIC CONTROL AND PROTECTION, STANDARD 701606	L SUM	1	
70102640	TRAFFIC CONTROL AND PROTECTION, STANDARD 701801	L SUM	1	
70103815	TRAFFIC CONTROL SURVEILLANCE	CAL DAY	6	
70300100	SHORT-TERM PAVEMENT MARKING	FOOT	2,504	
70300210	TEMPORARY PAVEMENT MARKING - LETTERS AND SYMBOLS	SQ FT	556	
70300220	TEMPORARY PAVEMENT MARKING - LINE 4"	FOOT	9,284	△
70300280	TEMPORARY PAVEMENT MARKING - LINE 24"	FOOT	186	
70301000	WORK ZONE PAVEMENT MARKING REMOVAL	SQ FT	4,858	△
78000100	THERMOPLASTIC PAVEMENT MARKING - LETTERS AND SYMBOLS	SQ FT	556	
78000200	THERMOPLASTIC PAVEMENT MARKING - LINE 4"	FOOT	9,284	△
78000650	THERMOPLASTIC PAVEMENT MARKING - LINE 24"	FOOT	186	

PLOT DATE = 2/16/2006
 FILE NAME = \\s0219851\9819851.dwg
 PLOT SCALE = 50.0000 / IN
 USER NAME = carlsonej

△ Rev. 4-10-06

SUMMARY OF QUANTITIES

F.A.P. RTE.	SECTION	COUNTY	TOTAL SHEET SHEETS	NO.
726	130 RS-2	WILLIAMSON	58	5
STA.		TO STA.		
FED. ROAD DIST. NO.		ILLINOIS	FED. AID PROJECT	



TO BE USED:

STA. 246+14 TO 263+79.92

- * MATCH EXISTING SLOPES
- ** 11' STA 262+65.08 TO 17.55' STA 263+79.92
- *** 11' STA 262+77.55 TO 16.88' STA 263+79.92

SEE DETAIL SHEET 28 OF 58 FOR CROSS SLOPE INFORMATION AT EAST ASH, PINE AND OAK ST.

SEE TABLE ON SHEET 31 OF 58 FOR EDGE OF CURB PROFILE ELEVATIONS IN PARKING LANES

PLOT DATE = 3/24/2006
 FILE NAME = c:\peter\peter\4901905\4901905.dwg
 PLOT SCALE = 5:0000 / 1" IN.
 USER NAME = blankjg

Rev. Sheet 4-10-06

F.A.P. RTE.	SECTION	COUNTY	TOTAL SHEETS	SHEET NO.
726	130 RS-2	WILLIAMSON	58	6
STA.	TO STA.			
FED. ROAD DIST. NO.	ILLINOIS		FED. AID PROJECT	

PAVEMENT SCHEDULE

LOCATION	POLYMERIZED BITUMINOUS SURFACE COURSE, SUPERPAVE, MIX "D", N105, 1-1/2"	INCIDENTAL BITUMINOUS SURFACING	STRIP REFLECTIVE CRACK CONTROL TREATMENT	BITUMINOUS BASE COURSE, 9"	SUB-BASE GRANULAR MATERIAL TYPE A 4"	AGGREGATE (PRIME COAT)	BITUMINOUS MATERIAL PRIME COAT	TEMP RAMP	PCC DRIVEWAY PAVEMENT 7"	PCC PAVEMENT 7 INCH	PAVEMENT FABRIC	PCC SIDEWALK, 4 INCH	PROTECTIVE COAT
STATION TO STATION	TON	TON	FOOT	SQ YD	SQ YD	TON	GAL	SQ YD	SQ YD	SQ YD	SQ YD	SQ FT	SQ YD
IL 148													
STA 232+50 TO 232+55								33					
STA 232+50 TO 263+79.92	1,700		15,650			30	1,821						
STA 235+82.98 RT (CYPRESS ST.)		4				0.1	4						
STA 235+82.98 LT (CYPRESS ST.)		4				0.1	4						
STA 238+81.44 RT (GRANT ST.)		5				0.1	5						
STA 238+81.44 LT (GRANT ST.)		7				0.1	7						
STA 242+30.63 RT (FORD ST.)		5				0.1	6						
STA 242+30.63 LT (FORD ST.)		7				0.1	7						
STA 245+52.46 TO STA 246+16.35 RT (STOTLAR ST.)		6		81	81	0.1	7						
STA 245+89.19 LT (STOTLAR ST.)		6				0.1	6						
STA 248+49.80 TO STA 249+18.66 RT (ASH ST.)		5		109	109	0.1	5						
STA 248+88.85 LT (ASH ST.)		4				0.1	4						
STA 252+38.9 LT (POPLAR ST.)		3				0.1	4						
STA 253+43.36 TO STA 254+47.42 LT (PARKING TURN-OUT)					105					105	105		105
STA 254+33.16 TO STA 255+37.16 RT (PARKING TURN-OUT)					105					105	105		105
STA 254+51.46 TO STA 254+87.46 LT					43				43			23	43
STA 254+44.73 RT													
STA 254+91.42 TO STA 255+53.42 LT (PARKING TURN-OUT)					58					58	58	22	58
STA 255+23 RT												19	
STA 255+32.66 LT													
STA 255+57.85 TO STA 256+18.34 RT (PINE ST.)		7		126	126	0.1	7						
STA 255+89.19 LT (PINE ST.)		3				0.1	4						
STA 255+64.73 TO 255+68.73 LT												46	
STA 256+28.04 TO STA 256+92.04 LT (PARKING TURN-OUT)					60					60	60		60
STA 256+27.70 TO STA 257+77.70 RT (PARKING TURN-OUT)					156					156	156		156
STA 256+59.68 TO STA 256+67.68 LT												31	
STA 257+03.70 RT												22	
STA 257+81.78 TO STA 257+97.46 RT					20				20				20
STA 258+01.46 TO STA 258+63.46 RT (PARKING TURN-OUT)					58					58	58		58
STA 258+81.22 TO STA 259+19.14 RT					40				40				40
STA 259+69.68 TO STA 260+27.34 RT (OAK ST.)		4		88	88	0.1	4						
STA 259+98.36 LT (OAK ST.)		4				0.1	4						
STA 259+74.34 TO STA 259+78.34 RT												47	
STA 263+74.92 TO STA 263+79.92								39					
TOTALS	1,700	74	15,650	404	1,049	32.0	1,899	72	103	542	542	210	645

DRAINAGE SCHEDULE

LOCATION	COMBINATION CONCRETE CURB & GUTTER TYPE B-6.12	FRAMES AND LIDS TO BE ADJUSTED	SUB-BASE GRANULAR MATERIAL TYPE A 4"	PROTECTIVE COAT	INLET SPECIAL, TYPE 3, 6'	STORM SEWER TYPE A, 12"	CONCRETE COLLAR	TRENCH BACKFILL
STATION TO STATION	FOOT	EACH	SQ YD	SQ YD	SQ YD	FOOT	CU YD	CU YD
IL 148								
STA 253+39.36 TO STA 254+51.46 LT (PARKING)	121		42	22				
STA 254+34.4 40' LT					1			34
STA 254+37.4 TO STA 255+37.4 LT						101		10
STA 254+43.4 STA 255+71 LT						29		
STA 254+29.16 TO STA 255+41.16 RT (PARKING)	121		42	27				
STA 254+51.46 TO STA 254+87.46 LT	36		7	3				
STA 254+87.42 TO STA 255+57.42 LT (PARKING)	79		27	27				
STA 255+40.4 40' LT					1			
STA 255+70.94 39' LT							0.16	
STA 256+24.04 TO STA 256+96.04 LT (PARKING)	81		28	18				
STA 256+23.70 TO STA 257+81.70 RT (PARKING)	167		57	37				
STA 257+64.7 40' RT					1			
STA 257+67.7 TO STA 258+47.6 RT						81		24
STA 257+81.70 TO STA 257+97.46 RT	16		3	3				
STA 257+97.46 TO STA 258+67.46 RT (PARKING)	79		27	18				
STA 258+50.3 40' RT					1			
STA 258+53.46 TO STA 259+80.76 RT						129		39
STA 258+81.22 TO STA 259+19.14 RT	38		6	6				
STA 259+80.76 40' RT							0.16	
STA 259+89.26.52' RT		1						
TOTALS	738	1	239	161	4	340	0.32	107

PLOT DATE = 9/24/2006
 FILE NAME = c:\pcc\pcc\pcc\98912\98912.dwg
 PLOT SCALE = 50.0000 1/1 IN.
 USER NAME = blankajg

F.A.P. RTE.	SECTION	COUNTY	TOTAL SHEETS	SHEET NO.
726	130 RS-2	WILLIAMSON	58	7
STA.	TO STA.			
FED. ROAD DIST. NO.	ILLINOIS	FED. AID PROJECT		

SEEDING AND EROSION CONTROL SCHEDULE

LOCATION	EROSION CONTROL BLANKET	SEEDING CLASS 1B	NITROGEN FERTILIZER NUTRIENT	PHOSPHORUS FERTILIZER NUTRIENT	POTASSIUM FERTILIZER NUTRIENT	AGRICULTURAL GROUND LIMESTONE
STATION TO STATION	SQYD	SQYD	POUNDS	POUNDS	POUNDS	POUNDS
IL 148						
STA 253+34.36 TO STA 254+56.42 LT	73	73	2	2	2	52
STA 254+29.16 TO STA 255+46.16 RT	105	105	3	3	3	84
STA 254+82.42 TO STA 255+64.73 LT	65	65	2	2	2	52
STA 256+13.0 TO STA 257+04.0 LT	68	68	2	2	2	54
STA 256+15.0 TO STA 258+86.0 RT	160	160	4	4	4	128
	471	471	12	12	12	370

EARTHWORK SCHEDULE

LOCATION	EARTH EXCAVATION	EXCAVATION TO BE USED IN EMBANKMENT ADJUSTED FOR SHRINKAGE	EMBANKMENT	EARTHWORK BALANCE WASTE (+) OR SHORTAGE (-)	COMMENTS
STATION TO STATION	CU YD	CU YD	CU YD	CU YD	
IL 148					
STA 253+39 TO 255+58 LT	120	60	15	45	
STA 254+29 TO 255+41 RT	80	40	10	30	
STA 256+24 TO 258+68 RT	158	79	15	64	
STA 256+24 TO 256+96 LT	35	18	5	13	
	393	197	45	152	

SHRINKAGE FACTOR: EARTH EXCAVATION 50%

REMOVAL SCHEDULE

LOCATION	BITUMINOUS SURFACE REMOVAL, 1 1/2"	BITUMINOUS SURFACE REMOVAL (VARIABLE DEPTH)	PAVEMENT REMOVAL	COMBINATION CONCRETE CURB AND GUTTER REMOVAL	DRIVEWAY PAVEMENT REMOVAL	CONCRETE STEP REMOVAL	SIDEWALK REMOVAL
STATION TO STATION	SQ YD	SQ YD	SQ YD	FOOT	SQ YD	EACH	SQ FT
IL 148							
STA 232+50 TO STA 263+79.92	20,011						
STA 235+82.98 RT (CYPRESS ST.)	43						
STA 235+82.98 LT (CYPRESS ST.)	43						
STA 238+81.44 RT (GRANT ST.)	53						
STA 238+81.44 LT (GRANT ST.)	76						
STA 242+30.6 RT (FORD ST.)	64						
STA 242+30.6 LT (FORD ST.)	80						
STA 245+52.46 TO STA 246+16.35 RT (STOTLAR ST.)			81				
STA 245+89.2 LT (STOTLAR ST.)	68						
STA 248+49.80 TO STA 249+18.66 RT (ASH ST.)		31	109				
STA 248+88.9 LT (ASH ST.)	43						
STA 252+38.9 LT (POPLAR ST.)	38						
STA 253+39.36 TO STA 254+29.36 LT				90			
STA 254+01.79 30.40' TO 44.67' LT							58
STA 254+29.16 TO STA 255+41.16 RT				112			
STA 254+29.36 TO STA 254+45.42 LT				16	20		
STA 254+44.74, 44.96' TO 49.97' RT						1	25
STA 254+45.42 TO STA 255+57.42 LT				112			
STA 255+23.44, 89' TO 49.69' RT							24
STA 255+32.66 RT						1	
STA 255+32.66, 44.18' TO 49.12' LT						1	25
STA 255+57.85 TO STA 256+18.34 RT (PINE ST.)		31	126				
STA 255+66.70, 31.84' TO 44.14' LT							46
STA 255+89.2 LT (PINE ST.)	40						
STA 256+23.70 TO STA 257+81.70 RT				158			
STA 256+24.04 TO STA 256+96.04 LT				72			
STA 256+08.42 TO 257+01.32, 30.60' TO 44.52' LT							312
STA 257+03.70, 44.73' TO 49.73' RT							25
STA 257+81.78 TO STA 257+97.46 RT				16	20		
STA 257+97.27 TO STA 258+67.27 RT				70			
STA 258+81.22 TO STA 259+19.14 RT				38	40		
STA 259+69.68 TO STA 260+27.34 RT (OAK ST.)		26	88				
STA 259+76.34, 31.70' TO 44.67' RT							47
STA 259+98.4 LT (OAK ST.)	44						
TOTALS	20,603	88	404	684	80	3	562

PLOT DATE = 3/24/2006
 FILE NAME = c:\p\projects\98912\98912.dwg
 PLOT SCALE = 50.0000' / IN.
 USER NAME = bjeneyjg

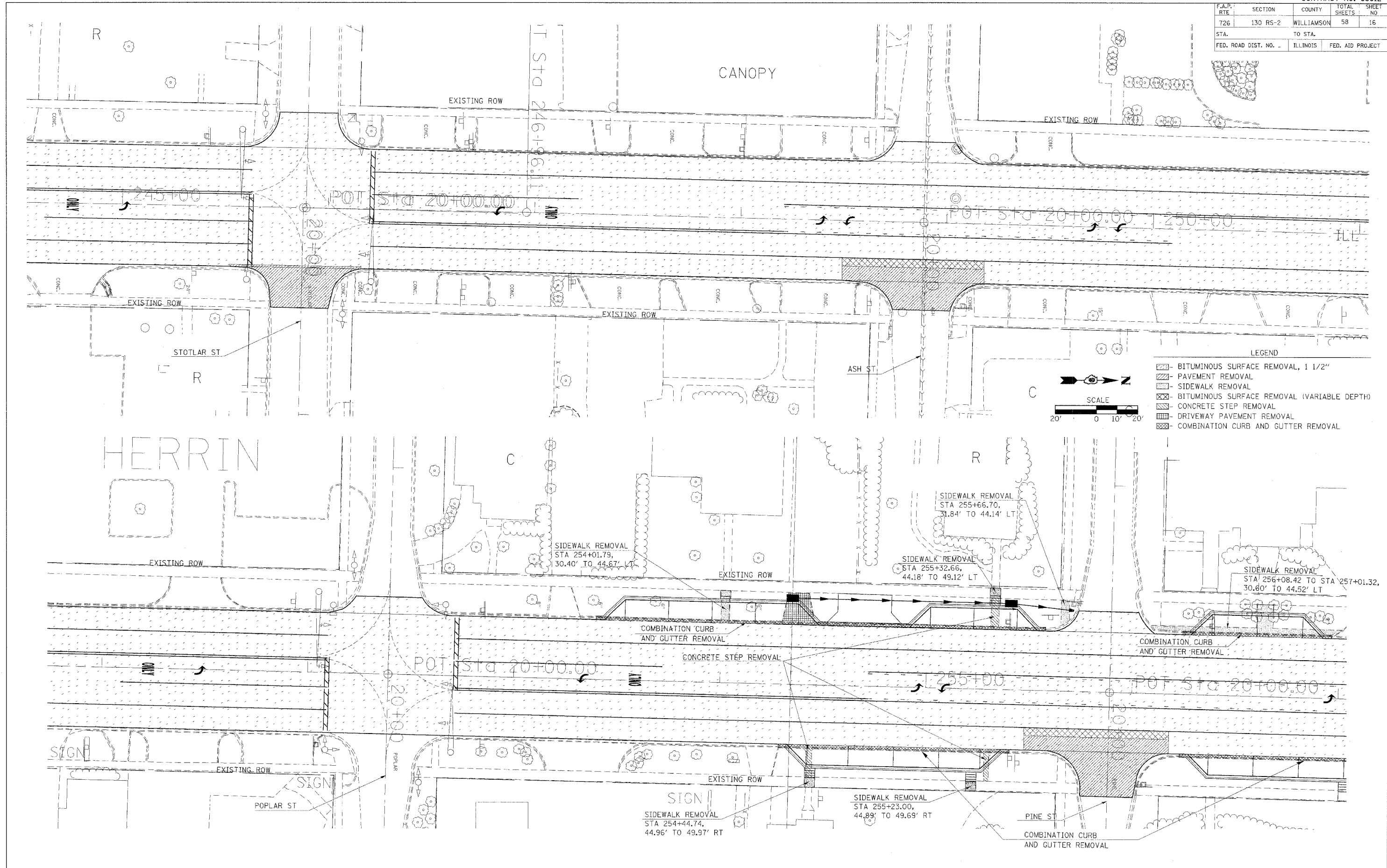
F.A.P. RTE.	SECTION	COUNTY	TOTAL SHEETS	SHEET NO.
726	130 RS-2	WILLIAMSON	58	8
STA.		TO STA.		
FED. ROAD DIST. NO.	ILLINOIS	FED. AID PROJECT		

PAVEMENT MARKING SCHEDULE

LOCATION	THERMOPLASTIC				LETTERS AND SYMBOLS
	4 INCH		24 INCH		
	WHITE	YELLOW	DOUBLE YELLOW	WHITE	
STATION TO STATION	FOOT	FOOT	FOOT	FOOT	SQ FT
IL 148					
STA 232+50 TO STA 243+62.39, 7' LEFT		1112			
STA 232+50 TO STA 243+62.39, 7' RIGHT		1112			
STA 232+50 TO STA 243+62.39, 6' LEFT(SKIP DASH)		278			
STA 232+50 TO STA 243+62.39, 6' RIGHT(SKIP DASH)		278			
STA 232+50 TO STA 245+62.46, 18' LEFT(SKIP DASH)	328				
STA 232+50 TO STA 245+62.46, 18' RIGHT(SKIP DASH)	328				
STA 232+83 (TWLT ARROW)					31.2
STA 235+02 (TWLT ARROW)					31.2
STA 237+02 (TWLT ARROW)					31.2
STA 239+02 (TWLT ARROW)					31.2
STA 241+02 (TWLT ARROW)					31.2
STA 243+02 (TWLT ARROW)					31.2
STA 243+62.39 TO STA 245+62.46, 7' LT(DOUBLE YELLOW)			201		
STA 244+62.39 TO STA 245+62.46, 7' RIGHT	100				
STA 244+73 ("ONLY")					20.8
STA 245+00 (LEFT TURN ARROW)					15.6
STA 245+62.46 (STOP BAR)				36	
STA 246+22.97 (STOP BAR)				36	
STA 246+20.97 TO STA 252+09.30, 18' LEFT(SKIP DASH)	147				
STA 246+20.97 TO STA 252+09.30, 18' RIGHT(SKIP DASH)	147				
STA 246+20.97 TO STA 247+21.01, 7' LEFT	100				
STA 246+81 (LEFT TURN ARROW)					15.6
STA 247+10 ("ONLY")					20.8
STA 246+20.97 TO STA 248+21.01, 7' RIGHT			200		
STA 248+21.01 TO STA 250+09.30, 7' LEFT		188			
STA 248+21.01 TO STA 250+09.30, 7' RIGHT		188			
STA 248+21.01 TO STA 250+09.30, 6' LEFT(SKIP DASH)		47			
STA 248+21.01 TO STA 250+09.30, 6' RIGHT(SKIP DASH)		47			
STA 248+46 (TWLT ARROW)					31.2
STA 249+77 (TWLT ARROW)					31.2
STA 250+09.30 TO STA 252+09.30, 7' LEFT			200		
STA 251+09.30 TO STA 252+09.30, 7' RIGHT	100				
STA 251+19 ("ONLY")					20.8
STA 251+47 LEFT TURN ARROW					15.6
STA 252+09.30 (STOP BAR)				36	
STA 252+71.89 (STOP BAR)				36	
STA 252+71.89 TO STA 263+79.92, 18' LEFT(SKIP DASH)	277				
STA 252+71.89 TO STA 263+79.92, 18' RIGHT(SKIP DASH)	277				
STA 252+71.89 TO STA 253+71.87, 7' LEFT	100				
STA 252+71.89 TO STA 254+71.87, 7' RIGHT			200		
STA 253+33 LEFT TURN ARROW					15.6
STA 253+62 ("ONLY")					20.8
STA 254+71.87 TO STA 261+79.92, 7' RIGHT		707			
STA 254+71.87 TO STA 261+79.92, 7' LEFT		707			
STA 254+71.87 TO STA 261+79.92, 6' RIGHT (SKIP DASH)		177			
STA 254+71.87 TO STA 261+79.92, 6' LEFT (SKIP DASH)		177			
STA 255+02 (TWLT ARROW)					31.2
STA 257+02 (TWLT ARROW)					31.2
STA 259+02 (TWLT ARROW)					31.2
STA 261+02 (TWLT ARROW)					31.2
STA 261+79.92 TO STA 263+79.92, 7' LEFT			200		
STA 262+79.92 TO STA 263+79.92, 7' RIGHT	100				
STA 262+93 ("ONLY")					20.8
STA 263+19 LEFT TURN ARROW					15.6
STA 263+79.92 (STOP BAR)				42	
PARKING SPACES					
STA 253+43 TO STA 254+47 LEFT		50			
STA 254+33 TO STA 255+37 RIGHT		50			
STA 254+91 TO STA 255+53 LEFT		30			
STA 256+28 TO STA 256+92 LEFT		30			
STA 256+28 TO STA 257+78 RIGHT		70			
STA 258+01 TO STA 258+63 RIGHT		30			
SUBTOTAL	2004	5278	2002	186	556
TOTAL		9284		186	556

PLOT DATE = 3/24/2005
 FILE NAME = c:\projects\98912\98912.dwg
 PLOT SCALE = 1/8"=1'-0"
 USER NAME = b1111111

F.A.P. RTE	SECTION	COUNTY	TOTAL SHEETS	SHEET NO.
726	130 RS-2	WILLIAMSON	58	16
STA.	TO STA.			
FED. ROAD DIST. NO.	ILLINOIS	FED. AID PROJECT		

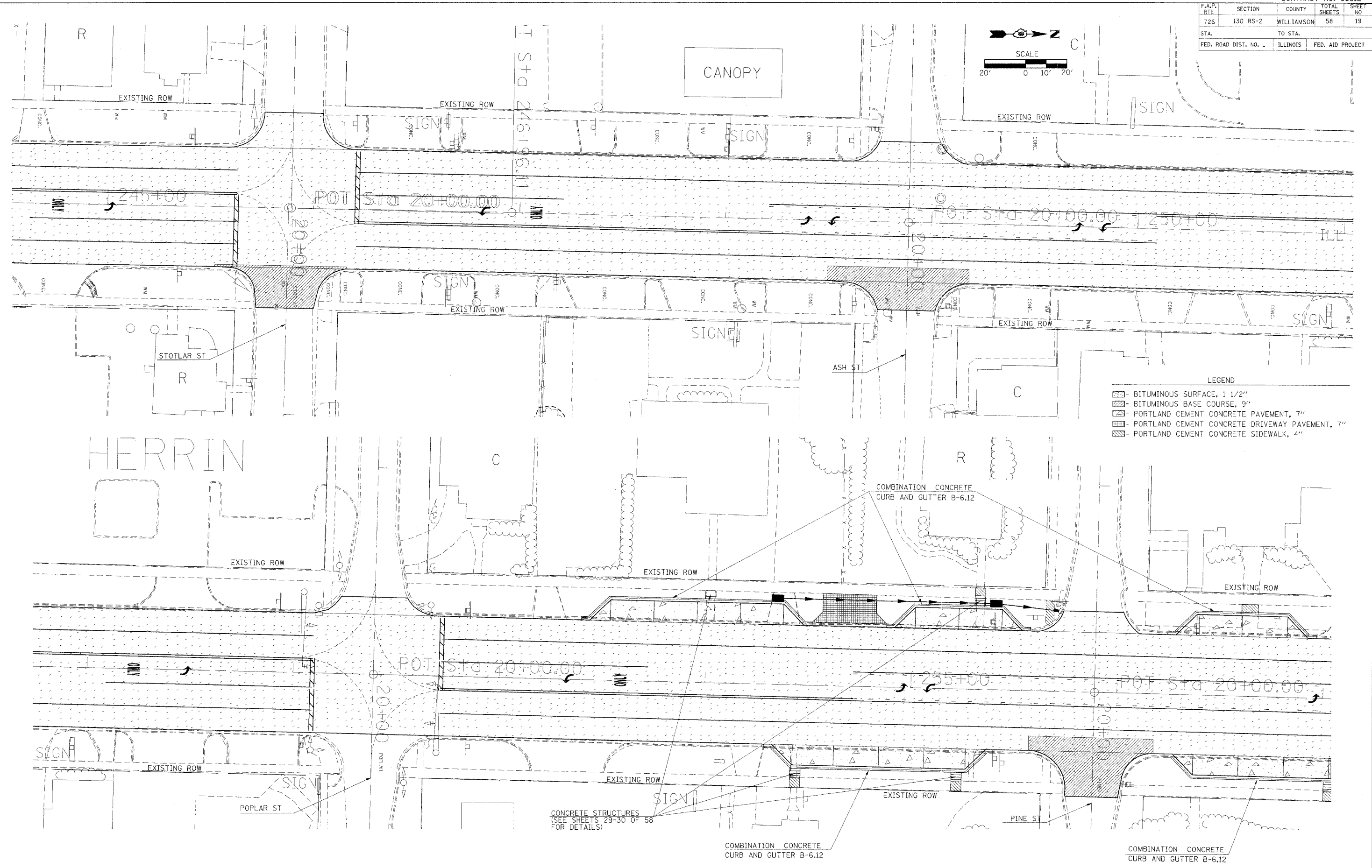
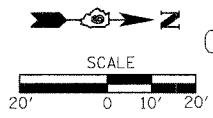


PLOT DATE = 3/24/2006
 FILE NAME = c:\puro\puro\98912\98912.dwg
 PLOT SCALE = 1/8" = 1'-0"
 USER NAME = blaircjb

Rev. Sheet 4-10-06

PROPOSED REMOVAL

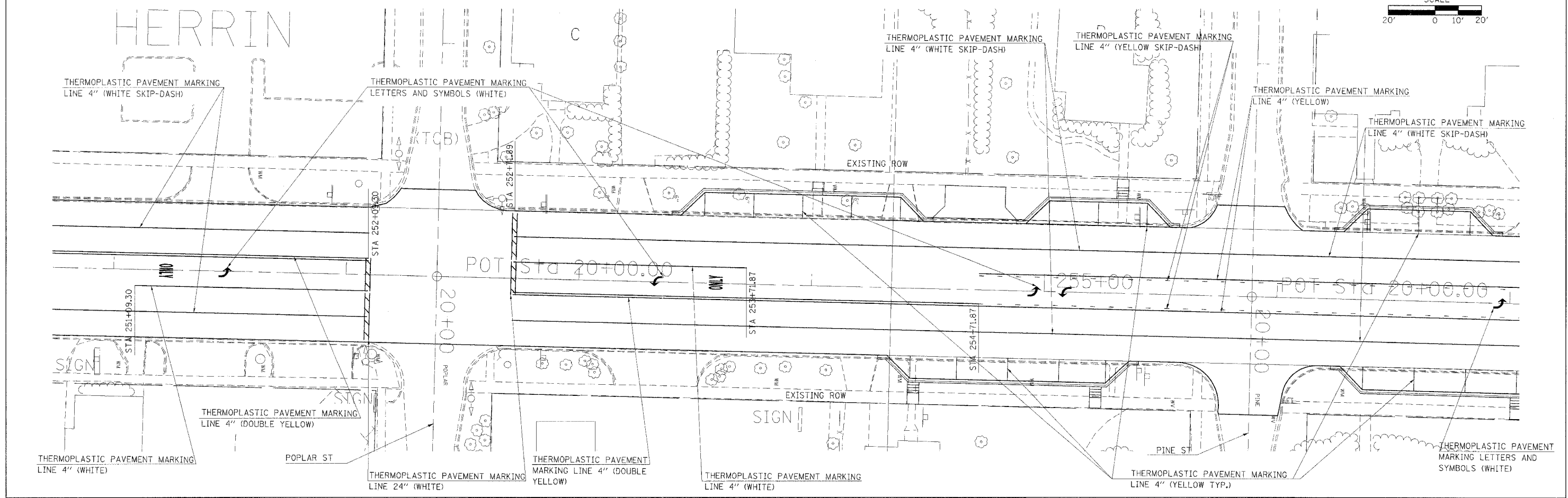
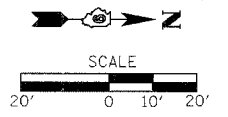
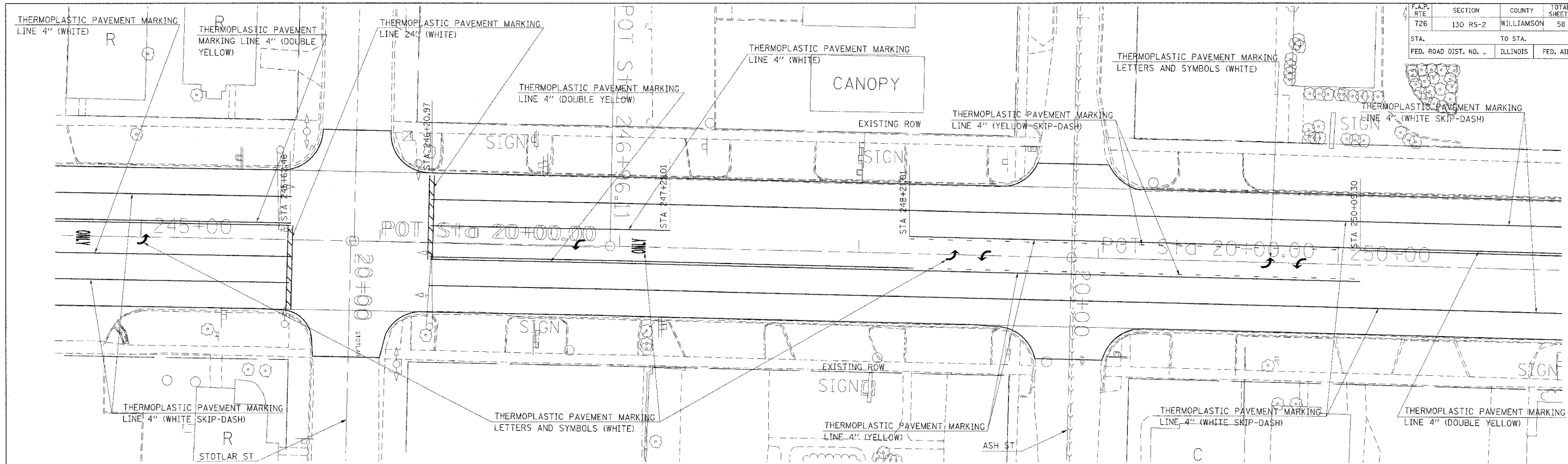
F.A.P. RTE	SECTION	COUNTY	TOTAL SHEETS	SHEET NO
726	130 RS-2	WILLIAMSON	58	19
STA.	TO STA.			
FED. ROAD DIST. NO.	ILLINOIS	FED. AID PROJECT		



- LEGEND
- BITUMINOUS SURFACE, 1 1/2"
 - BITUMINOUS BASE COURSE, 9"
 - PORTLAND CEMENT CONCRETE PAVEMENT, 7"
 - PORTLAND CEMENT CONCRETE DRIVEWAY PAVEMENT, 7"
 - PORTLAND CEMENT CONCRETE SIDEWALK, 4"

PLOT DATE = 3/27/2006
 FILE NAME = c:\p\proj\98912\98912.dwg
 PLOT SCALE = 28.0000 / 1" = 100.0000'
 USER NAME = carltonj

F.A.P. RTE	SECTION	COUNTY	TOTAL SHEETS	SHEET NO
726	130 RS-2	WILLIAMSON	58	25
STA.	TO STA.			
FED. ROAD DIST. NO. -	ILLINOIS	FED. AID PROJECT		

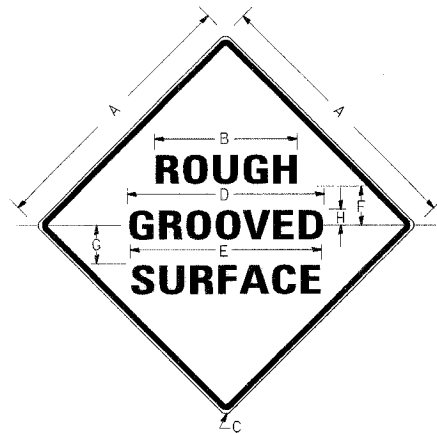


PLOT DATE = 3/24/2005
 FILE NAME = c:\pave\pave\p98912\p98912.mxd
 PLOT SCALE = 20.0000 / 1"
 USER NAME = blankajj

F.A.P. RTE.	SECTION	COUNTY	TOTAL SHEETS	SHEET NO.
726	130 RS-2	WILLIAMSON	58	31
STA.		TO STA.		
FED. ROAD DIST. NO. ILLINOIS FED. AID PROJECT				

ILLINOIS STANDARD

W8-I106



COLORS:

LEGEND AND BORDER- BLACK NON-REFLECTORIZED
BACKGROUND- ORANGE REFLECTORIZED

SIGN SIZE	DIMENSIONS							
	A	B	C	D	E	F	G	H
48X48	48.0	24.1	3.0	34.0	33.0	6.0	13.0	3.5

SIGN SIZE	SERIES LINES			MAR-GIN	BOR-DER	BLANK STD.
	1	2	3			
48X48	7C	7C	7C	0.8	1.2	B4-48D

ALL DIMENSIONS IN INCHES

NOTES:

PRIOR TO ALLOWING TRAFFIC ON ANY PORTION OF THE ROADWAY THAT HAS BEEN COLDMILLED, THE CONTRACTOR SHALL HAVE ERECTED "ROUGH GROOVED SURFACE" SIGNS THAT CONFORM TO THE ABOVE DETAILS. A MINIMUM OF ONE SIGN AT EACH END OF THE IMPROVEMENT WILL BE REQUIRED. THE CONTRACTOR SHALL MAINTAIN THE "ROUGH GROOVED SURFACE" SIGNS UNTIL THE COLDMILLED SURFACE IS COVERED WITH LEVELING BINDER OR SURFACE COURSE.

IF AT ANY TIME THE SIGNS ARE IN PLACE BUT NOT APPLICABLE, THEY SHALL BE TURNED FROM THE VIEW OF MOTORISTS OR COVERED AS DIRECTED BY THE ENGINEER.

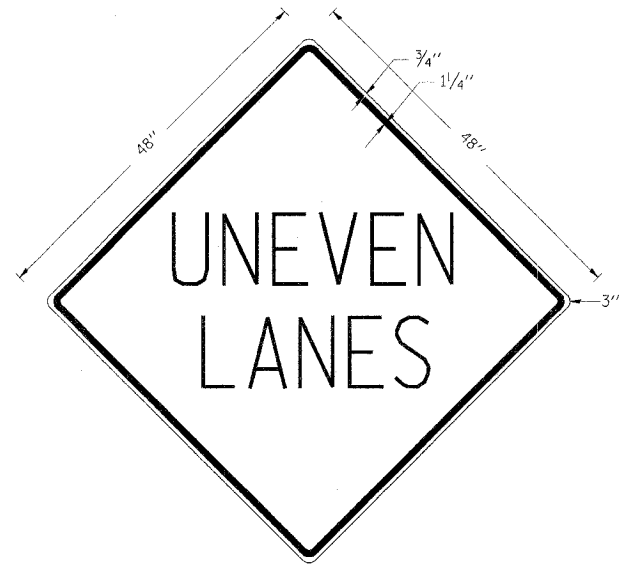
THE COST OF FURNISHING, ERECTING, MAINTAINING, AND REMOVING THE REQUIRED SIGNS SHALL BE INCLUDED IN THE CONTRACT.

STD. 9-39

REVISIONS	
DRAWN	2-15-89
REVISED	4-6-93
REVISED	
REVISED	

UNEVEN LANES SIGN

W8-11 (48" x 48")



COLORS:

LEGEND AND BORDER - BLACK NON-REFLECTORIZED
BACKGROUND - ORANGE REFLECTORIZED

NOTE: PRIOR TO ALLOWING TRAFFIC ON ANY PORTION OF THE ROADWAY THAT HAS BEEN COLDMILLED OR BEFORE RESURFACING OPERATIONS BEGIN, THE CONTRACTOR SHALL HAVE ERECTED "UNEVEN PAVEMENT" SIGNS THAT CONFORM TO THE ABOVE DETAILS. A MINIMUM OF ONE SIGN AT EACH END OF THE IMPROVEMENT WILL BE REQUIRED. THE CONTRACTOR SHALL MAINTAIN THE "UNEVEN PAVEMENT" SIGNS UNTIL THE RESURFACING OPERATIONS ARE COMPLETED.

IF AT ANY TIME THE SIGNS ARE IN PLACE BUT NOT APPLICABLE, THEY SHALL BE TURNED FROM THE VIEW OF MOTORISTS OR COVERED AS DIRECTED BY THE ENGINEER.

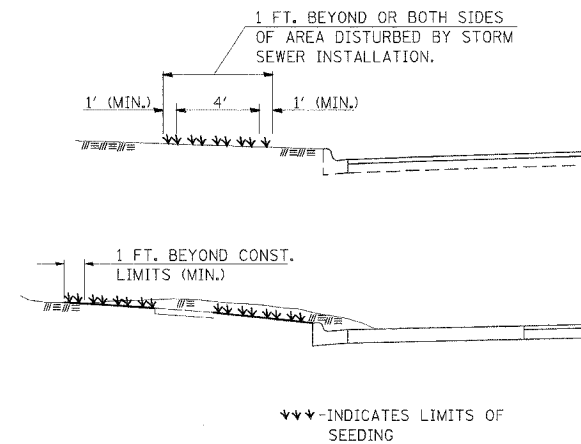
THE COST OF FURNISHING, ERECTING, MAINTAINING, AND REMOVING THE REQUIRED SIGNS SHALL BE INCLUDED IN THE CONTRACT.

STD. 9-41

REVISIONS	
DRAWN	2-15-89
REVISED	4-6-93
REVISED	7-23-04
REVISED	

EDGE OF CURB PROFILE ELEVATIONS IN PARKING LANE LOCATIONS		
STATION	OFFSET	ELEVATION
253+43.36	29' LT	433.85
253+53.36	39' LT	433.67
254+37.36	39' LT	433.42
254+47.36	29' LT	433.55
254+33.16	29' RT	434.31
254+43.16	39' RT	434.44
255+27.16	39' RT	434.27
255+37.16	29' RT	434.10
254+49.42	29' LT	433.85
254+59.42	39' LT	433.36
255+43.42	39' LT	433.10
255+53.42	29' LT	433.22
256+27.70	29' RT	433.19
256+37.70	39' RT	432.84
257+67.70	39' RT	429.40
257+77.70	29' RT	429.29
256+28.04	29' LT	432.52
256+38.04	39' LT	432.45
256+82.04	39' LT	431.37
256+92.04	29' LT	430.97
258+01.46	29' RT	428.64
258+11.46	39' RT	428.24
258+53.46	39' RT	427.17
258+63.46	29' RT	427.06

SEEDING



GENERAL NOTES

IN GENERAL, ALL EARTH SURFACES DISTURBED DURING CONSTRUCTION OPERATIONS SHALL BE SEEDED UPON COMPLETION OF ALL GRADING OPERATIONS.

FERTILIZER NUTRIENTS AND LIMESTONE SHALL BE APPLIED TO ALL SEEDED AREAS.

THE RATES OF APPLICATION OF FERTILIZER AND LIMESTONE SHALL BE AS SPECIFIED IN THE SPECIAL PROVISIONS.

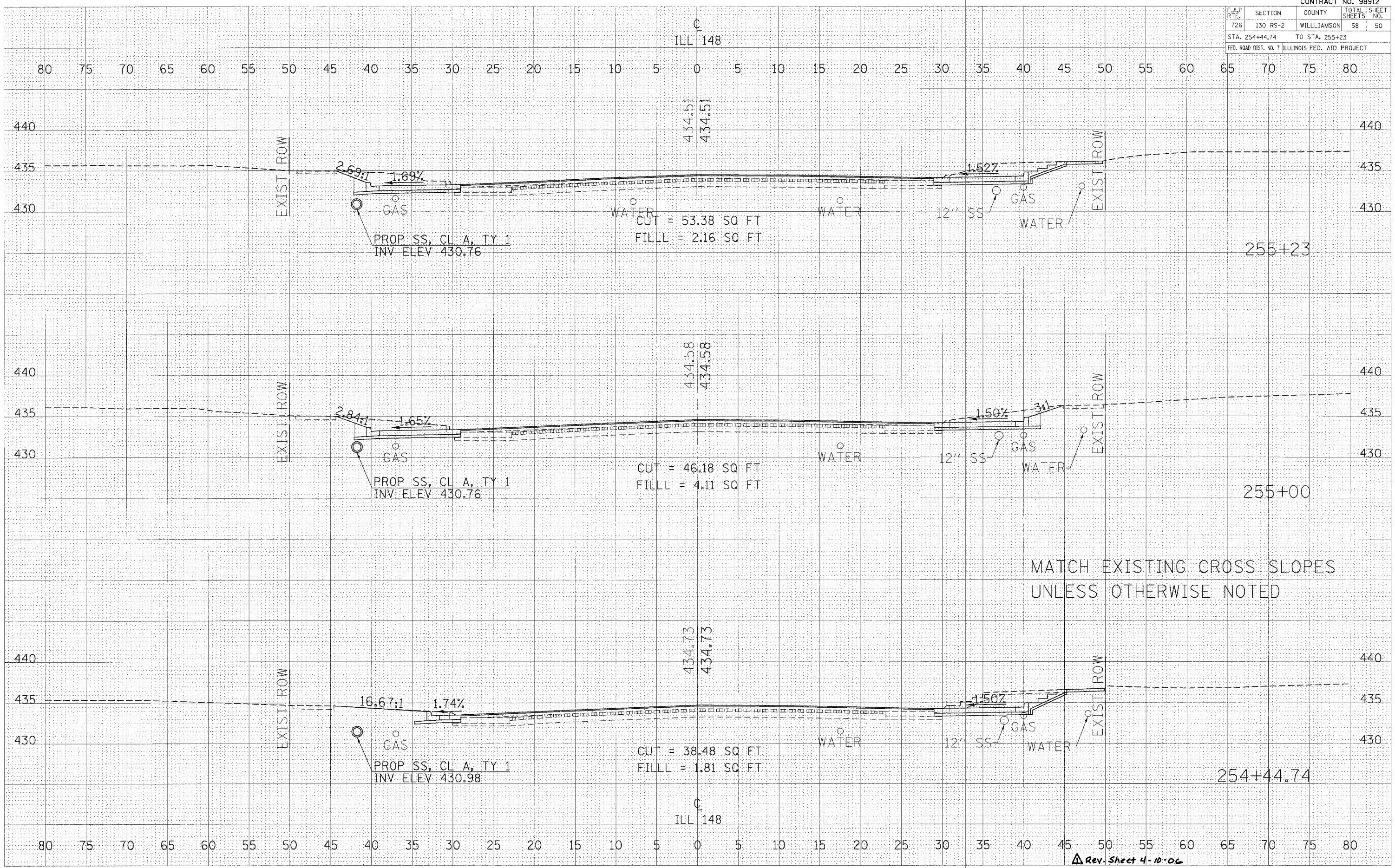
SECTIONS 250 AND 251 OF THE STANDARD SPECIFICATIONS SHALL GOVERN THIS WORK EXCEPT AS SPECIFIED HEREIN OR AS NOTED IN THE SPECIAL PROVISIONS.

Rev. Sheet 4-10-06

ILLINOIS STANDARD; UNEVEN LANES SIGN; SEEDING; EDGE OF CURB PROFILE ELEVATIONS IN PARKING LANES

PLOT DATE = 3/24/2006
FILE NAME = c:\projects\98912\98912.dwg
PLOT SCALE = 1/8" = 1'-0"
USER NAME = b1anpa3j

F.A.P. RTE.	SECTION	COUNTY	TOTAL SHEETS	SHEET NO.
726	130 RS-2	WILLIAMSON	58	50
STA. 254+44.74 TO STA. 255+23				
FED. ROAD DIST. NO. 7 ILLINOIS FED. AID PROJECT				



MATCH EXISTING CROSS SLOPES
UNLESS OTHERWISE NOTED

Rev. Sheet 4-10-06

CROSS SECTIONS - IL RTE 148 STA 254+44.74 TO STA 255+23

DATE: _____ BY: _____
 SURVEYED: _____
 PLOTTED: _____
 TEMPLATE: _____
 NOTE BOOK: _____
 AREA CHECKED: _____

DATE: _____ BY: _____
 ORIGINAL SURVEY: _____
 PLOTTED: _____
 TEMPLATE: _____
 NOTE BOOK: _____
 AREA CHECKED: _____

PLOT DATE = 3/27/2006
 PLOT TIME = 11:46:11 AM
 USER NAME = carbonej