

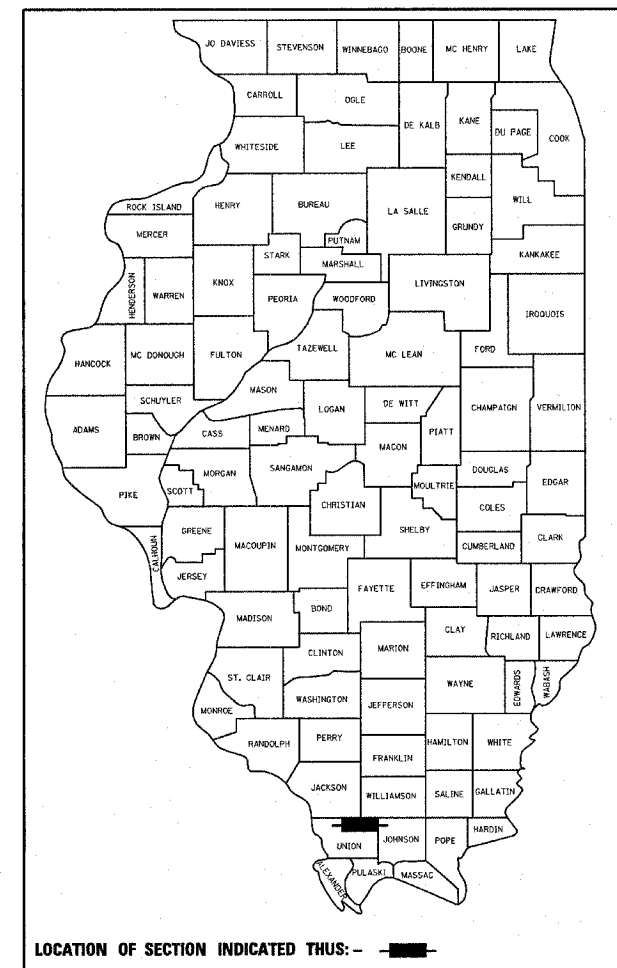
F.A.S. RTE.	SECTION	COUNTY	TOTAL SHEETS	SHEET NO.
1926	04-00093-00-BR	UNION	22	1

**CONTRACT NO. 99236**

**STATE OF ILLINOIS  
DEPARTMENT OF TRANSPORTATION  
DIVISION OF HIGHWAYS**

**PROPOSED  
HIGHWAY PLANS**

**BRIDGE REPLACEMENT AND REHABILITATION PROGRAM  
F.A.S. ROUTE 1926  
SECTION 04-00093-00-BR  
PROJECT COUNTY HIGHWAY 8 OVER BRADSHAW CREEK  
UNION COUNTY  
PROJECT NO. BRS-1926 (106)  
JOB NO. C-99-553-04**

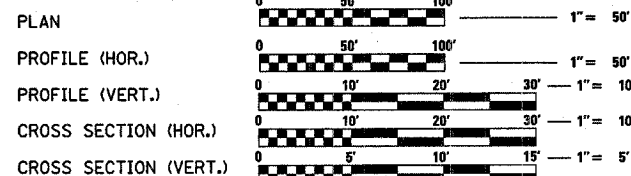


INDEX OF SHEETS

1. COVER
2. SUMMARY OF QUANTITIES AND GENERAL NOTES
3. EXISTING TYPICAL SECTION
4. PROPOSED TYPICAL SECTIONS
5. SCHEDULE OF QUANTITIES
6. REMOVAL PLAN
7. PLAN AND PROFILE
8. EROSION CONTROL PLAN
9. INTERSECTION AND ENTRANCE DETAILS
- 10.-14. BRIDGE PLANS
- 15.-22. CROSS SECTIONS

LIST OF STANDARDS

- |             |  |
|-------------|--|
| 280001-02   | TEMPORARY EROSION CONTROL SYSTEMS  |
| 515001-02   | NAME PLATE FOR BRIDGES   |
| 542401      | METAL END SECTION FOR PIPE CULVERTS  |
| 630001-06   | STEEL PLATE BEAM GUARDRAIL   |
| 631032-02   | TRAFFIC BARRIER TERMINAL, TYPE 6A  |
| 635006-02   | REFLECTOR AND TERMINAL MARKER PLACEMENT  |
| 635011-01   | REFLECTOR MARKER AND MOUNTING DETAILS  |
| 702001-06   | TRAFFIC CONTROL DEVICES  |
| 720001      | SIGN PANEL MOUNTING DETAILS  |
| 720006      | SIGN PANEL ERECTION DETAILS  |
| 720011      | METAL POST FOR SIGNS, MARKERS AND DELINEATORS  |
| 729001      | APPLICATIONS OF TYPES A AND B METAL POSTS (FOR SIGNS AND MARKERS)  |
| B.L.R. 17-3 | TRAFFIC CONTROL DEVICES - DAY LABOR CONSTRUCTION   |
| B.L.R. 21-6 | TYPICAL APPLICATION OF TRAFFIC CONTROL DEVICES FOR CONSTRUCTION ON RURAL LOCAL HIGHWAYS  |
| B.L.R. 22-4 | TYPICAL APPLICATION OF TRAFFIC CONTROL DEVICES FOR CONSTRUCTION ON RURAL LOCAL HIGHWAYS (TWO LANE TWO WAY RURAL TRAFFIC) (ROAD CLOSED TO THRU TRAFFIC) |
| B.L.R. 23-1 | TRAFFIC BARRIER TERMINAL, TYPE 1   |

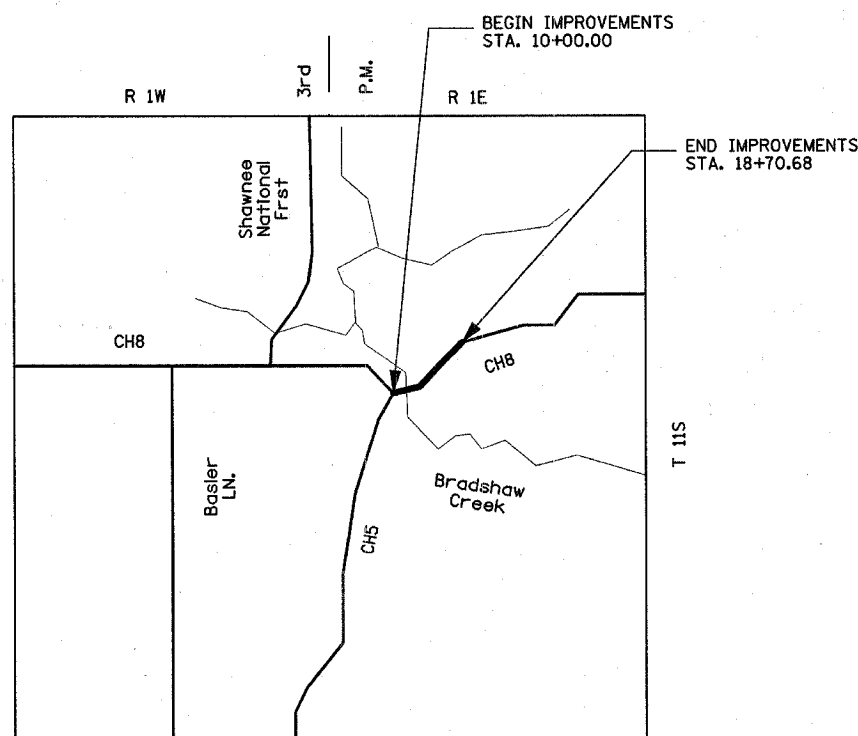


**TOLL FREE**  
JOINT UTILITY LOCATING INFORMATION FOR EXCAVATORS  
(J.U.L.I.E.) TELEPHONE NUMBER  
1-800-892-0123

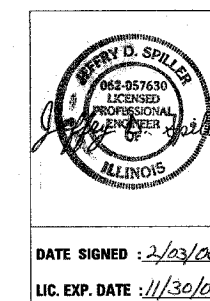
**UTILITY NOTE**

THE LOCATIONS OF THOSE BURIED AND ABOVEGROUND UTILITIES SHOWN ARE APPROXIMATE, ARE SHOWN FOR CONTRACTOR INFORMATIONAL USE ONLY, AND ARE NOT TO BE REFERENCED FOR CONSTRUCTION PURPOSES. THE IMPLIED PRESENCE OR ABSENCE OF UTILITIES IS NOT TO BE CONSTRUED BY THE OWNER, ENGINEER, CONTRACTOR, OR SUBCONTRACTORS TO BE AN ACCURATE AND COMPLETE REPRESENTATION OF UTILITIES THAT MAY OR MAY NOT EXIST ON THE CONSTRUCTION SITE. BURIED AND ABOVEGROUND UTILITY LOCATION, IDENTIFICATION, AND MARKING ARE THE SOLE RESPONSIBILITY OF THE CONTRACTOR. REROUTING, DISCONNECTION, PROTECTION, ETC. OF ANY UTILITIES MUST BE COORDINATED AMONG THE CONTRACTOR, UTILITY COMPANY, AND OWNER. SITE SAFETY, INCLUDING THE AVOIDANCE OF HAZARDS, ASSOCIATED WITH BURIED AND ABOVEGROUND UTILITIES REMAIN THE SOLE RESPONSIBILITY OF THE CONTRACTOR.

ADT (2004) = 250, SU = 4%  
HIGHWAY CLASS: MAJOR COLLECTOR (NON-URBAN)  
DESIGN SPEED: 30 MPH  
DESIGN POLICY: FAPLHI (RURAL)  
VARIANCES GRANTED: HORIZONTAL ALIGNMENT WITH 30 MPH DESIGN SPEED  
COMMITMENTS: NONE



TOTAL AND NET LENGTH OF IMPROVEMENT: 870 FT = 0.17 MILES



Illinois Licensed Professional Service Corporation  
\*184-001084  
Hanson Professional Services Inc.  
2900 W. Willow Knolls Road  
Peoria, Illinois 61614-1129

**STATE OF ILLINOIS  
DEPARTMENT OF TRANSPORTATION**

SUBMITTED: February 06, 06  
Bole R. Boyd Jr.  
LOCAL AGENCY REPRESENTATIVE

PASSED: February 7, 2006  
Don W. Hill  
ENGINEER OF LOCAL ROADS AND STREETS

APPROVED: Feb 9, 2006  
Mary C. Lamie  
MARY C. LAMIE, P.E.  
DEPUTY DIRECTOR OF HIGHWAYS  
REGION FIVE ENGINEER