

F.A. RTE.	SECTION	COUNTY	TOTAL SHEETS	SHEET NO.
1926	04-00093-00-BR	UNION	22	7
STA. 10+00.00		TO STA. 18+90.00		
FED. ROAD DIST. NO.		ILLINOIS	FED. AID PROJECT	
CONTRACT NO. 99236				

CONTROL POINTS				
POINT #	NORTHING	EASTING	ELEVATION	DESCRIPTION
48	16,175.14	91,945.10	461.70	1/2" PIN W/ CAP
49	15,395.82	91,963.02	457.96	1/2" PIN W/ CAP
61	16,426.81	92,283.80	476.06	1/2" PIN W/ CAP

BENCHMARKS

B.M. 100 - MAG NAIL OVER WASHERS ON N.E. WINGWALL OF EXISTING BRIDGE OVER BRADSHAW CREEK. ELEV. 464.19 (SEE NOTE 6)

B.M. 102 - MAG NAIL ON EAST END OF 48" CMP 20'± WEST END OF BRADSHAW ROAD ELEV. 458.10

LEGEND

--- EXISTING R.O.W.

- - - PROPOSED R.O.W.

--- CONSTRUCTION LIMITS

--- TEMPORARY EASEMENT

~ ROADSIDE DITCH FLOWLINE

SPEED LIMIT

30

R2-1 (24" x 30")

REDUCED SPEED AHEAD

R2-5a (24" x 30")

- NOTE:**
- LOW STEEL EL. 459.48 W. ABUTMENT
LOW STEEL EL. 461.49 E. ABUTMENT
 - SEE INTERSECTION AND ENTRANCE DETAILS SHEET FOR INFORMATION.
 - SEE EROSION CONTROL PLAN FOR PROPOSED CULVERT INFORMATION, (SHEET 8)
 - PAVEMENT TRANSITIONS:
STA. 18+45.00, 11.0' RT. TO STA. 18+69.81, 9.2' RT.
STA. 18+45.00, 11.0' LT. TO STA. 18+69.94, 9.9' LT.
 - SHOULDER TRANSITIONS:
STA. 18+15.00, 13.0' RT. TO STA. 18+45.00, 11.0' RT.
STA. 18+15.00, 13.0' LT. TO STA. 18+45.00, 11.0' LT.
 - CONTRACTOR SHALL RE-SET B.M. 100 PRIOR TO DEMOLITION OF EXISTING BRIDGE.
 - COST OF RELOCATING EXISTING STOP SIGN AND STREET SIGNS TO BE INCLUDED IN COST OF EARTH EXCAVATION.

PROP. CURVE CUR20

PI STA. = 10+80.44
Δ = 12° 26' 35" (LT)
D = 12° 43' 57"
R = 450.00'
T = 49.06'
L = 97.73'
E = 2.67'
e = 0.0%
P.C. STA. = 10+31.38
P.T. STA. = 11+29.11
DESIGN SPEED = 30 MPH

PROP. CURVE CUR22

PI STA. = 14+11.53
Δ = 51° 55' 58" (LT)
D = 20° 50' 05"
R = 275.00'
T = 133.93'
L = 249.26'
E = 30.88'
e = 6.0%
P.C. STA. = 12+77.60
P.T. STA. = 15+26.86
DESIGN SPEED = 30 MPH

PROP. CURVE CUR21

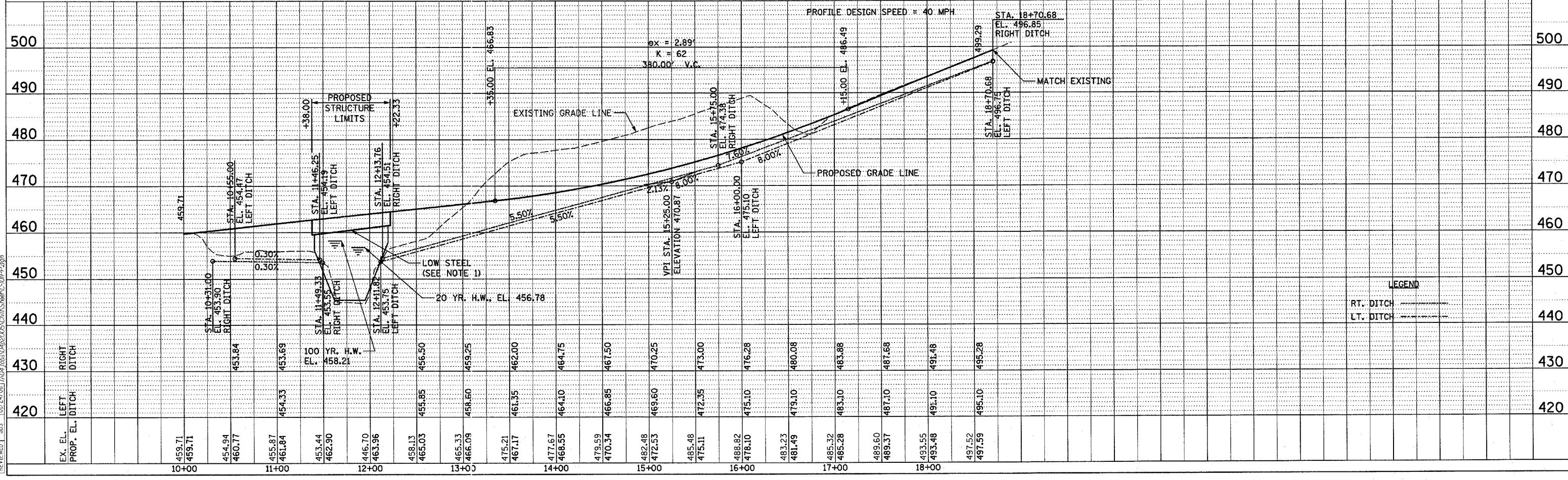
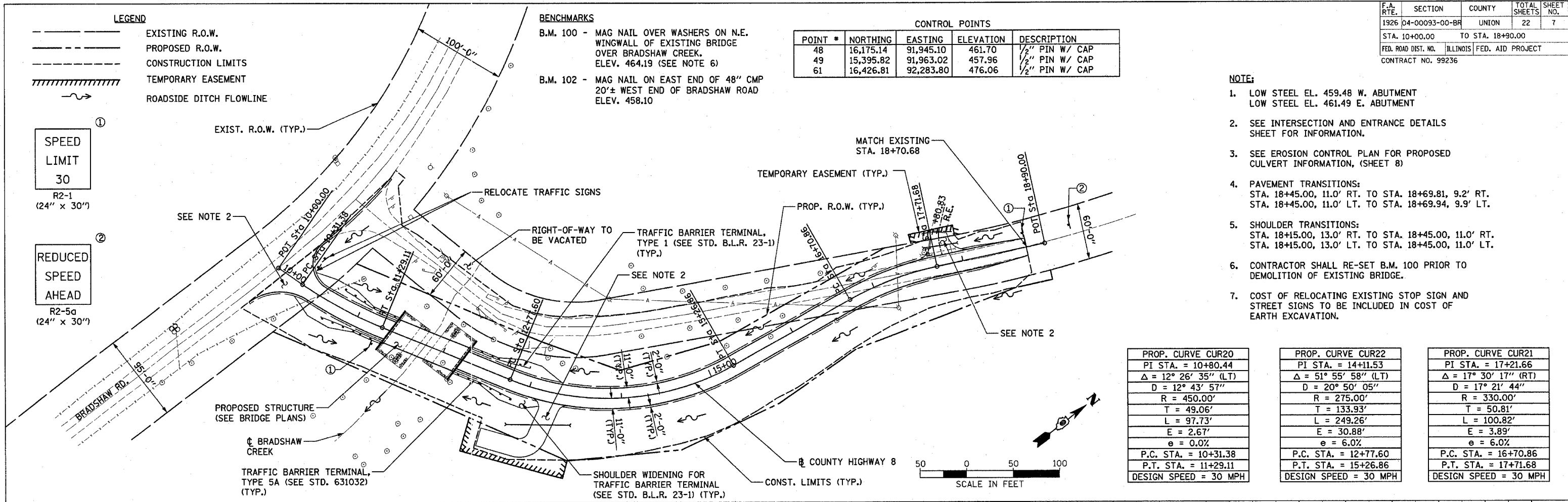
PI STA. = 17+21.66
Δ = 17° 30' 17" (RT)
D = 17° 21' 44"
R = 330.00'
T = 50.81'
L = 100.82'
E = 3.89'
e = 6.0%
P.C. STA. = 16+70.86
P.T. STA. = 17+71.68
DESIGN SPEED = 30 MPH

DATE	
BY	
PLAN	
NO.	
DATE	
BY	
PROFILE	
NO.	
DATE	
BY	

HANSON
Hanson Professional Services Inc. 2006
Copyright Hanson Professional Services Inc. 2006

DATE	
BY	
PROFILE	
NO.	
DATE	
BY	

LAYOUT	RLA	06/17/04	P16
DRAWN	RLA	01/24/06	01/31/2006
REVIEWED	JDS	01/24/06	1A0416a-042025CVA358W-C-01PP-016



LEGEND

RT. DITCH

LT. DITCH