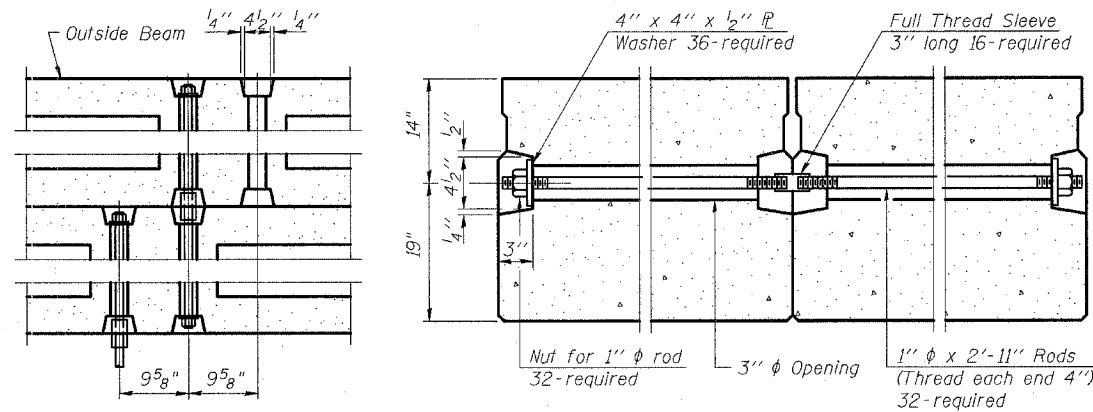


FABRIC BEARING PAD
(Interior)

FIXED

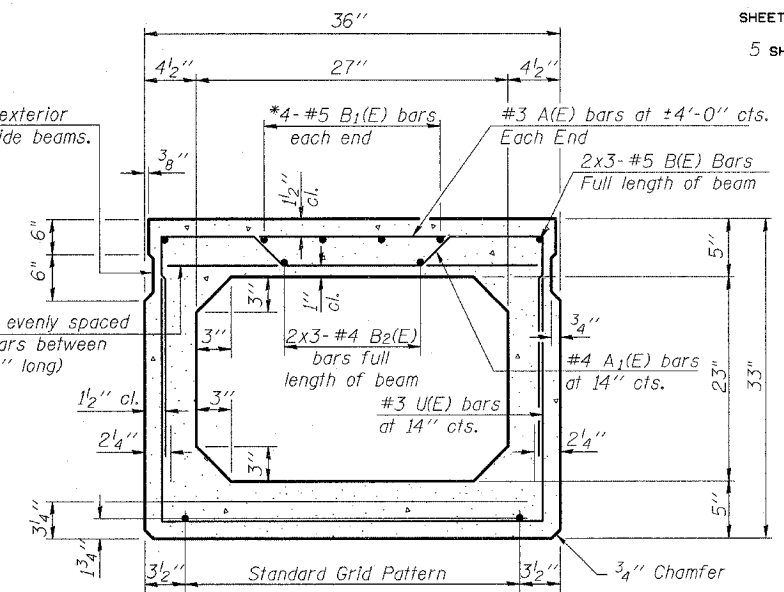
FABRIC BEARING PAD
(Exterior)



TYPICAL TRANSVERSE TIE ASSEMBLY

Omit key on exterior face of outside beams.

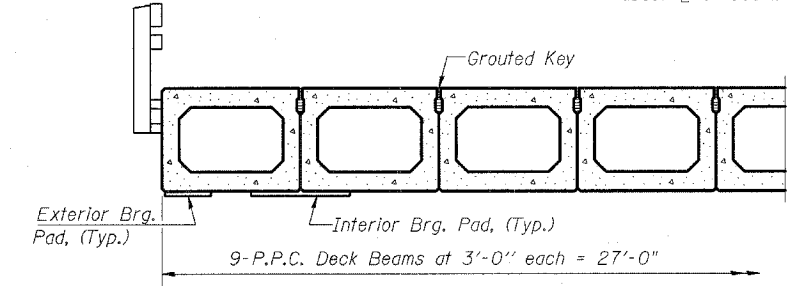
2-#3 A(E) bars evenly spaced between A₁(E) bars between end blocks (2'-8" long)



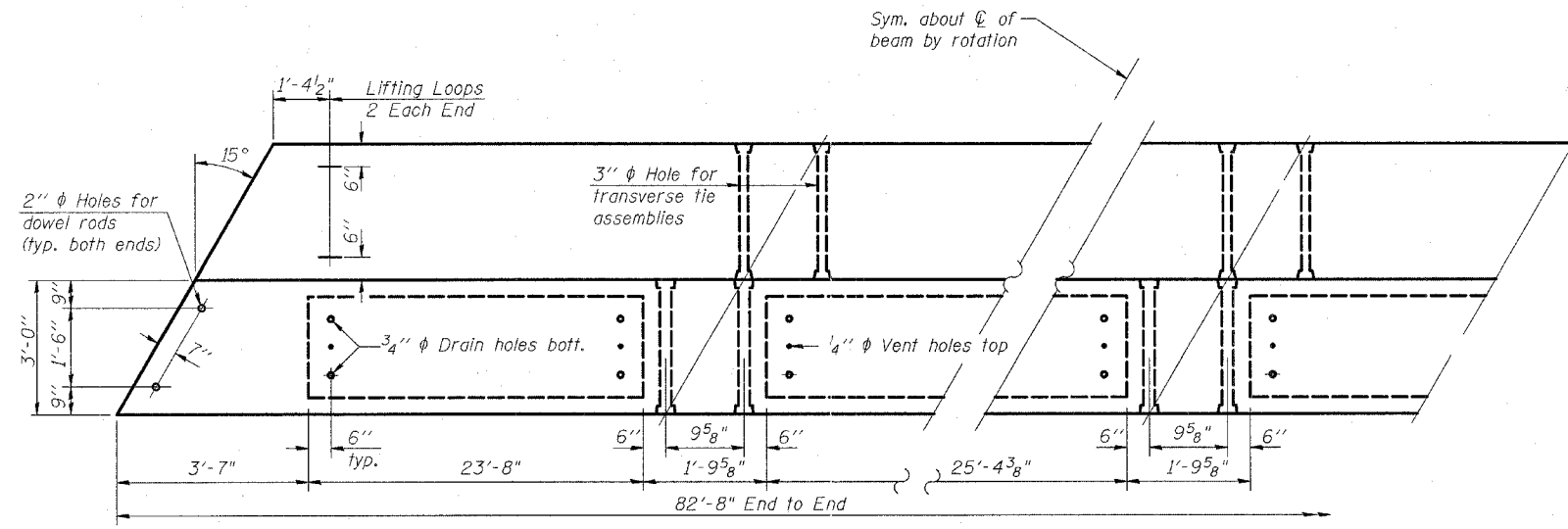
TYPICAL SECTION

19-1/2" ϕ Strands, Each Strand Stressed to 30,900 Lbs.
7-Strands 1 3/4" up, 6-Strands 3 1/4" up, 2-Strands 6" up,
2-Strands 9" up, 2-Strands 12" up

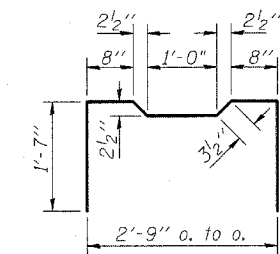
Note:
Place strands symmetrically about ϕ of beam.



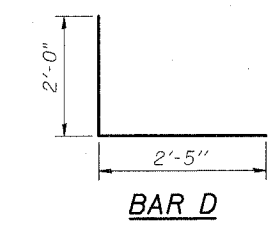
PARTIAL CROSS SECTION



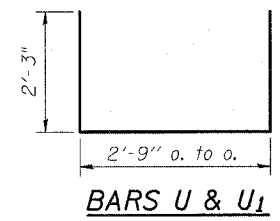
PLAN



BAR A₁(E)



BAR D



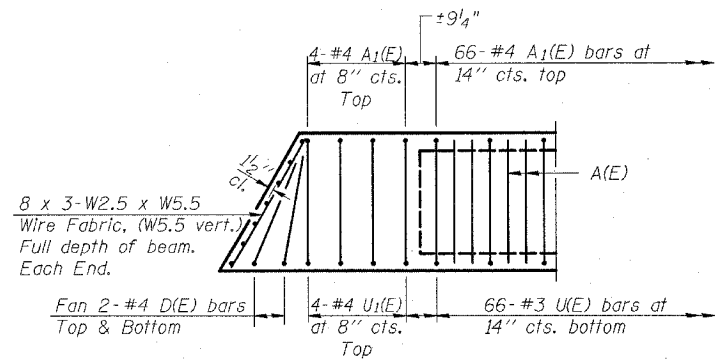
BARS U & U₁

BILL OF MATERIAL
(One Beam)

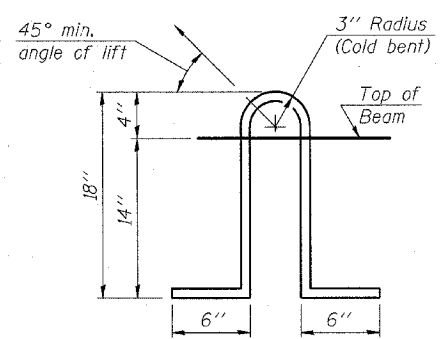
Bar	No.	Size	Length	Shape
A(E)	132	#3	2'-8"	—
A ₁ (E)	74	#4	6'-1"	⌒
B(E)	6	#5	29'-6"	—
B ₁ (E)	8	#5	16'-7"	—
B ₂ (E)	6	#4	28'-7"	—
D(E)	8	#4	4'-5"	—
U(E)	66	#3	7'-3"	□
U ₁ (E)	8	#4	7'-3"	□

NOTES

Prestressing steel shall be uncoated high strength, low relaxation 7-wire strand, Grade 270. The nominal diameter shall be 1/2" and the nominal cross-sectional area shall be 0.153 sq. in. Lifting loops shall be 3-1/2" ϕ 270 ksi strands, as shown. The 1" ϕ rods in the transverse tie assembly shall be tightened to a snug fit and the threads set. Pockets that receive transverse tie bar on outside shall be filled with grout after transverse tie assembly is in place. Non prestressing steel shall conform to ASTM A706 Grade 60. The bearing seat surfaces shall be adjusted by shimming to assure firm and even bearing. Two 1/8" fabric adjusting shims of the dimensions of the Exterior Bearing Pad shall be provided for each bearing. Keyway surfaces shall be cleaned to remove form oil or other bond breaking material prior to shipment of the beams. Cleaning shall be done by sandblasting the keyway areas between top of the beam and the bottom edge of the key. Corrosion Inhibitor, as covered in the Special Provisions, shall be used in the concrete for precast prestressed concrete deck beams. Required Release Strength, f'ci, shall be 5,000 p.s.i.



END PLAN



LIFTING LOOP DETAIL

REVISIONS	
NAME	DATE

ILLINOIS DEPARTMENT OF TRANSPORTATION
F.A.S. 1926
SECTION 04-00093-00-BR
COUNTY HIGHWAY 8 OVER BRADSHAW CREEK
P.P.C. DECK BEAM
DETAILS
SCALE: VERT. 1"=1'-0"
HORIZ. 1"=10'-0"
DATE 02/03/06
DRAWN BY MGM
CHECKED BY SMK