



815 Commerce Drive Suite 200
Oak Brook, Illinois 60523
Telephone: 630.990.3800
Fax: 630.990.3801

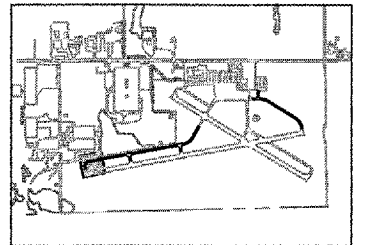


CITY OF DIXON, ILLINOIS
Post Office Box 386
Dixon, Illinois 61021
Telephone: 815.288.1485

DIXON MUNICIPAL AIRPORT
CHARLES R. WALGREEN FIELD

OVERLAY TAXIWAYS A, A1, A2 AND C;
REMOVE AND REPLACE TAXIWAY C1

AIP PROJECT NO. 3-17-0036-B9
IDA PROJECT NO. C73-3549



KEY PLAN

No.	Drawing Issue Description	Date	By

Date
MARCH 3, 2006
Sheet Title

STAKING PLAN
TAXIWAY A
STA 300+42.50 THRU
STA 305+00

843-0588009

Project Number	LDH	11/07/05
Layout By	LDH, KLK	11/07/05
Designed By	RMH	02/03/06
Reviewed By	LDH	---
Drawn By	---	---

ALIGNMENT DATA

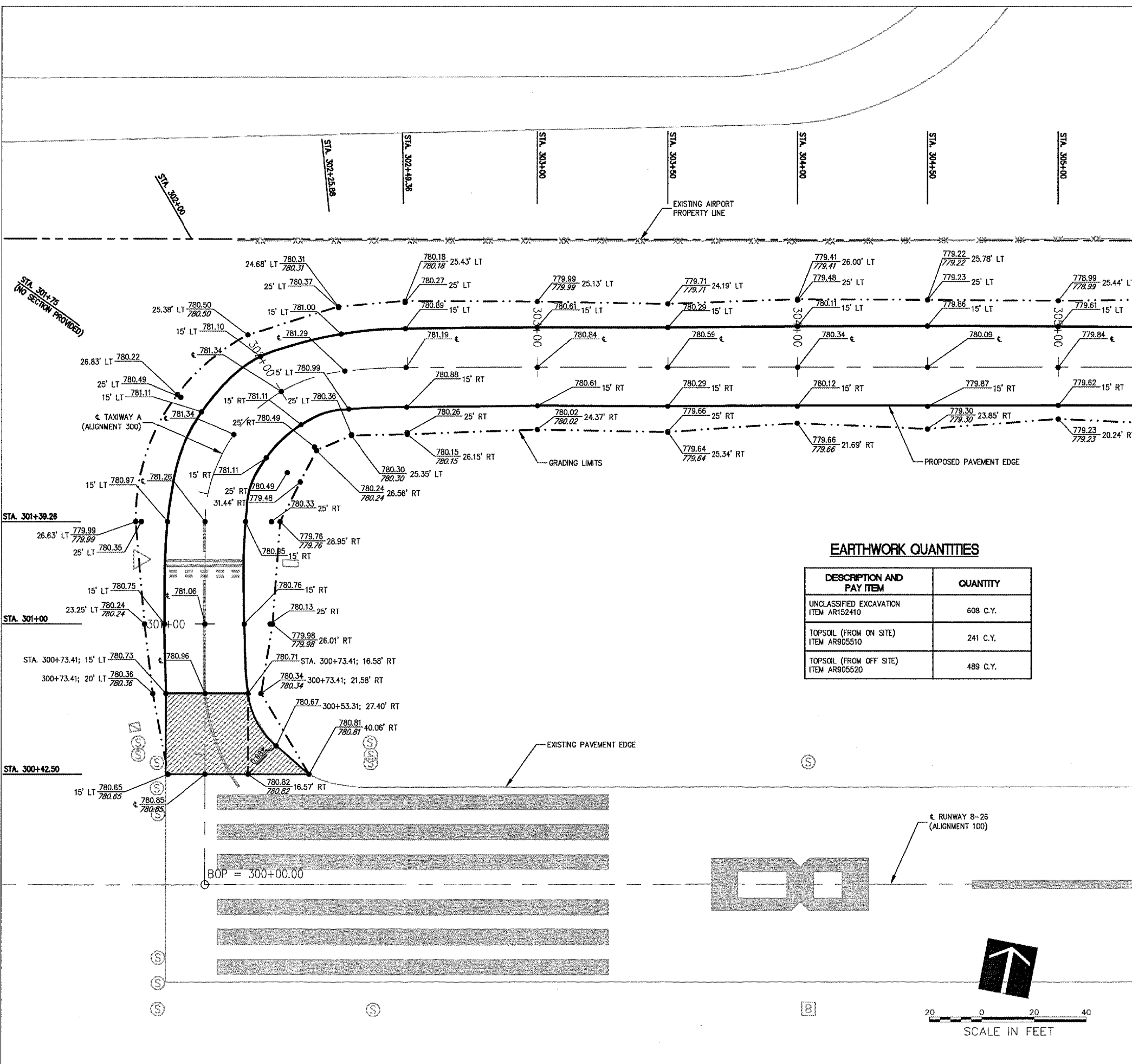
TAXIWAY	DESCRIPTION	STATION	STATE PLANE COORDINATES	
			NORTHING	EASTING
TAXIWAY A	BEGINNING OF ALIGNMENT 300	300+00	1882281.04	2490679.77
	P.C. OF 59.70' RADIUS	301+39.28	1882417.93	2490654.18
	CENTER OF 59.70' RADIUS	-----	1882427.73	2490713.07
	P.T. (P.C.C.) OF 59.70' RADIUS	302+25.88	1882485.02	2490686.30
	P.C. (P.C.C.) OF 263.16' RADIUS	302+25.88	1882485.02	2490696.30
	CENTER OF 263.16' RADIUS	-----	1882232.81	2490771.42
	P.T. OF 263.16' RADIUS	302+49.36	1882490.71	2490719.07
	P.C. OF 212.50' RADIUS	319+47.82	1882803.41	2492388.49
	CENTER OF 212.50' RADIUS	-----	1883012.83	2492352.38
	P.T. (P.C.C.) OF 212.50' RADIUS	320+85.22	1882867.44	2492507.37
	P.C. (P.C.C.) OF 938.04' RADIUS	320+85.22	1882867.44	2492507.37
	CENTER OF 938.04' RADIUS	-----	1883425.49	2491753.17
P.T. OF 938.04' RADIUS	322+12.37	1882974.24	2492576.25	
END OF ALIGNMENT 300	325+62.75	1883276.75	2492753.05	
TAXIWAY A1	BEGINNING OF ALIGNMENT 400	400+00	1882428.18	2491466.69
	END OF ALIGNMENT 400	402+50	1882673.83	2491420.27
TAXIWAY A2	BEGINNING OF ALIGNMENT 500	500+00	1882593.49	2492350.80
	END OF ALIGNMENT 500	502+50	1882839.23	2492304.85
TAXIWAY C	BEGINNING OF ALIGNMENT 600	600+00	1883577.25	2493447.48
	P.C. OF 250.75' RADIUS	602+81.04	1883583.39	2493728.45
	CENTER OF 250.75' RADIUS	-----	1883332.67	2493732.19
	P.T. (P.C.C.) OF 250.75' RADIUS	604+07.81	1883553.84	2493850.35
	P.C. (P.C.C.) OF 2188.74' RADIUS	604+07.81	1883553.84	2493850.35
	CENTER OF 2188.74' RADIUS	-----	1881641.51	2492785.66
	P.T. OF 2188.74' RADIUS	605+10.25	1883501.93	2493938.65
	P.C. OF 396.96' RADIUS	609+85.83	1883252.16	2494343.36
	CENTER OF 396.96' RADIUS	-----	1882908.56	2494144.58
	P.T. (P.C.C.) OF 396.96' RADIUS	610+60.19	1883209.13	2494403.88
	P.C. (P.C.C.) OF 224.34' RADIUS	610+60.19	1883209.13	2494403.88
	CENTER OF 224.34' RADIUS	-----	1883050.63	2494245.11
P.T. OF 224.34' RADIUS	612+08.44	1883078.32	2494467.74	
END OF ALIGNMENT 600	612+95.94	1882992.32	2494483.82	
TAXIWAY C1	BEGINNING OF ALIGNMENT 700	700+00	1883582.93	2493707.12
	END OF ALIGNMENT 700	701+60	1883742.89	2493703.62

NOTES:

- ALIGNMENTS ARE BASED ON STATE PLANE COORDINATE (ILLINOIS-WEST). SEE ALIGNMENT DATA TABLE, THIS SHEET.
- FOR ADDITIONAL GRADING INFORMATION, SEE PLAN AND PROFILE SHEETS AND CROSS SECTIONS.
- FOR ADDITIONAL STORM SEWER AND UNDERDRAIN INFORMATION, SEE SCHEDULES.
- CONTRACTOR IS REQUIRED TO FIELD VERIFY EXISTING UTILITY LOCATIONS.
- CONTRACTOR WILL BE PROVIDED WITH CONTROL POINTS AND BASELINES IN ACCORDANCE WITH SPECIAL PROVISIONS.
- EXCESS UNCLASSIFIED EXCAVATION (TAXIWAY C1) IS TO BE DISPOSED OF AT AN OFFSITE LOCATION. COST INCIDENTAL TO ITEM AR152410.
- PROPOSED PAVEMENT EDGES TO MATCH EXISTING LOCATIONS.
- STAKING POINTS AT CROSS SECTIONS UNLESS NOTED OTHERWISE.
- FOR SEEDING INFORMATION, SEE LANDSCAPING PLAN.
- FOR PAVEMENT MARKING INFORMATION, SEE MARKING PLANS.

LEGEND

- PROPOSED GRADING LIMITS
- PROPOSED UNDERDRAIN
- PROPOSED STORM SEWER
- EXISTING SWALE
- EXISTING FENCE
- EXISTING STORM SEWER
- EXISTING ELECTRICAL CABLE
- ▲ PROPOSED FLARED END SECTION
- PROPOSED INSPECTION HOLE
- ⊙ EXISTING STORM SEWER MANHOLE
- ⊙ EXISTING STAKE MOUNTED LIGHT
- ⊙ EXISTING BASE MOUNTED LIGHT
- ⊙ EXISTING RETROREFLECTIVE MARKER
- ⊙ EXISTING HANDHOLE
- ⊙ EXISTING GUIDANCE SIGN
- ⊙ EXISTING REIL
- ▲ PROP. EL. OFFSET
- EXIST. EL.



EARTHWORK QUANTITIES

DESCRIPTION AND PAY ITEM	QUANTITY
UNCLASSIFIED EXCAVATION ITEM AR152410	608 C.Y.
TOPSOIL (FROM ON SITE) ITEM AR905510	241 C.Y.
TOPSOIL (FROM OFF SITE) ITEM AR905520	489 C.Y.

