

B.M. #1: Chiseled square in corner of sea wall.  
Elev. 633.74 (NAVD 88)

B.M. #2: Chiseled square in top of northernmost pier. Elev. 641.35 (NAVD 88)

**CURVE DATA**  
P.I. # 1  
PI STA. = 0+43.27  
 $\Delta = 23^\circ 17' 08''$  (RT)  
D = 27° 17' 02"  
R = 210.00'  
T = 43.27'  
L = 85.35'  
E = 4.41'  
P.C. STA = 0+00.00  
P.R.C. STA = 0+85.35

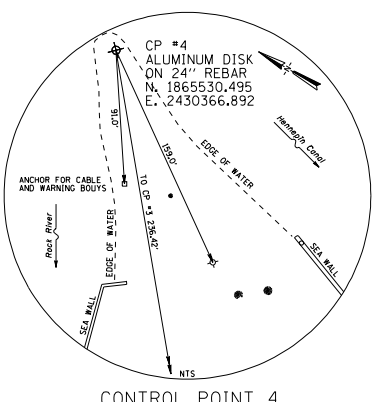
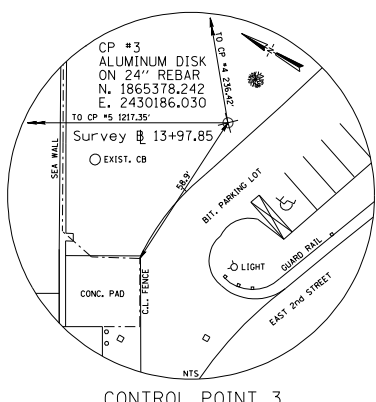
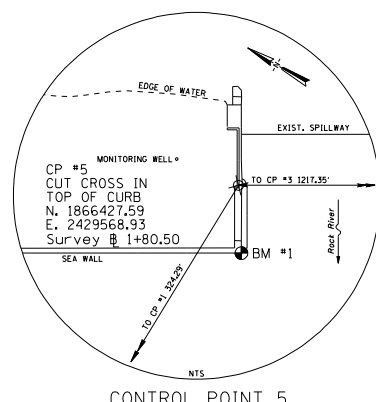
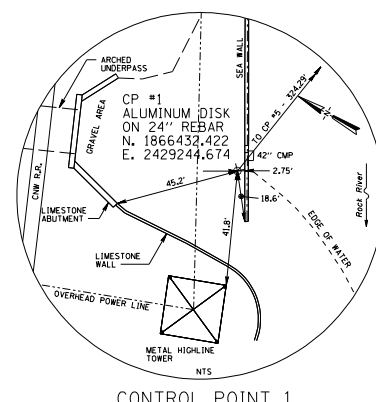
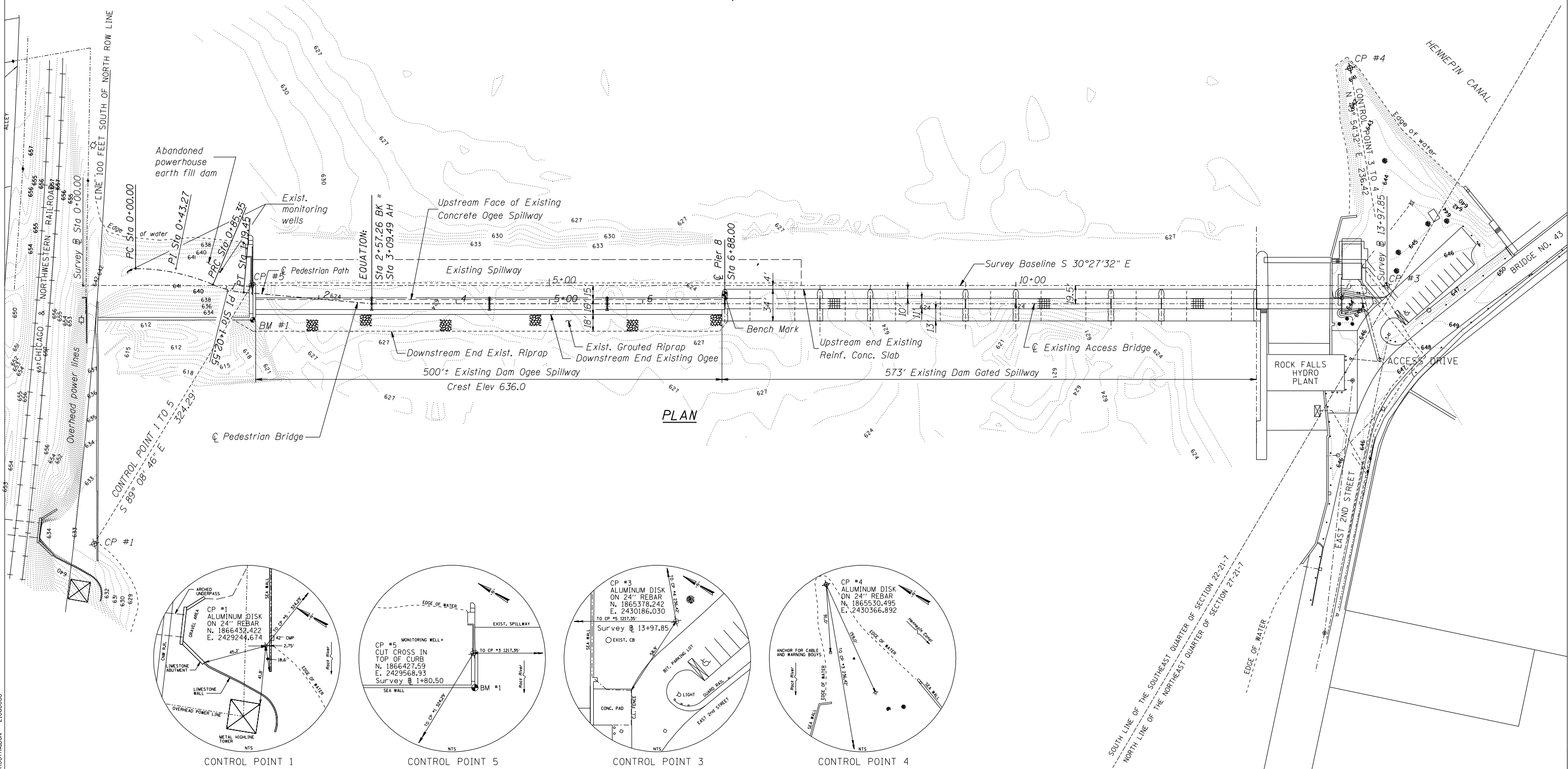
**CURVE DATA**  
P.I. # 2  
PI STA. = 1+02.55  
 $\Delta = 18^\circ 14' 08''$  (LT)  
D = 53° 27' 45"  
R = 107.17'  
T = 17.20'  
L = 34.11'  
E = 1.37'  
P.R.C. STA = 0+85.35  
P.T. STA = 1+19.45

**RIGHT ANGLE OFFSETS FROM SURVEY BASELINE TO PEDESTRIAN PATH CENTERLINE**

SURVEY STATION	0+56.27	0+99.54	1+55.08	3+09.49	6+88.00
PEDESTRIAN PATH STATION	0+00.00	0+43.27	1+02.55	2+57.26	6+88.00
OFFSETS	18.05' Lt	18.05' Lt.	5.85' Rt.	19.50' Rt	19.50' Rt.

**CURVE DATA**

ROCK RIVER



SOUTH LINE OF THE SOUTHEAST QUARTER OF SECTION 22-21-7  
NORTH LINE OF THE NORTHEAST QUARTER OF SECTION 27-21-7

Designed By JUF Checked By TMM  
Drawn By JUF Checked By TMM

SUR00THAD0N 2106000B