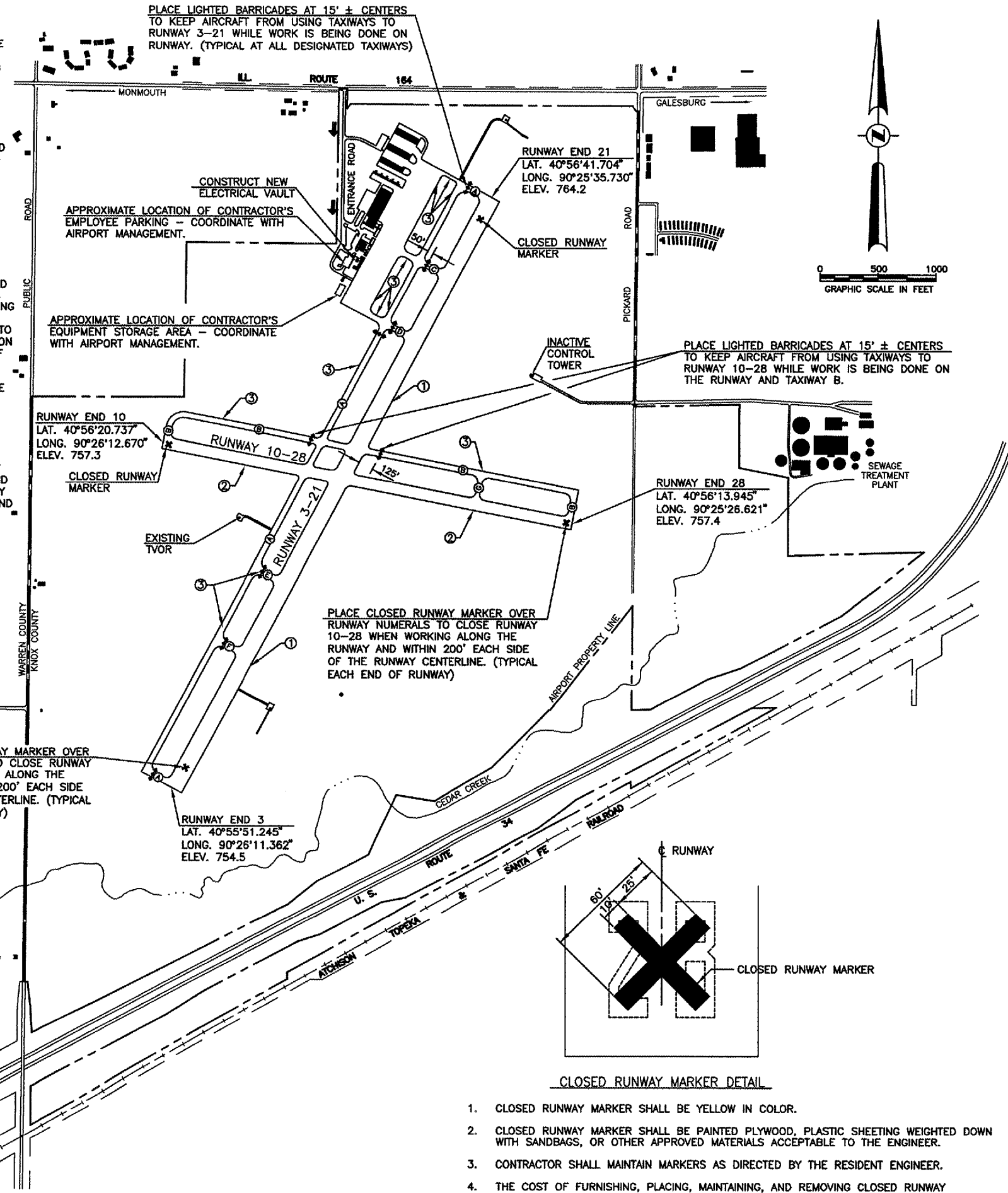


RECOMMENDED CONSTRUCTION SEQUENCE

- CLOSE RUNWAY 10-28 AND ITS PARALLEL TAXIWAY B. ALSO CLOSE TAXIWAY A THAT PARALLELS RUNWAY 3-21 AND THE TAXIWAYS CONNECTING TO RUNWAY 3-21 (TAXIWAYS A, C, E AND F), LEAVING TAXIWAY D AND RUNWAY 3-21 OPEN TO TRAFFIC.
- REMOVE THE EXISTING LIGHTING SYSTEM COMPONENTS FROM THE CLOSED PAVEMENTS AND INSTALL THE NEW LIGHTING SYSTEM FIXTURES AND CABLING ON THESE CLOSED PAVEMENTS. MAINTAIN OPERATION OF THE EXISTING LIGHTS ON RUNWAY 3-21 WHILE IT IS OPEN TO AIR TRAFFIC. AT SUCH TIME AS THE WORK IS COMPLETED ON THE LIGHTING SYSTEM ON TAXIWAY C, OPEN SAID TAXIWAY C TO TRAFFIC ACCESS TO RUNWAY 3-21. CLOSE TAXIWAY D AND PERFORM REMOVAL AND REPLACEMENT OF THE LIGHTING SYSTEM COMPONENTS ON TAXIWAY B.
- DURING THE TIME PERIOD THAT WORK IS BEING ACCOMPLISHED ON THE PAVEMENTS IDENTIFIED IN ITEMS 1 AND 2 ABOVE, CONSTRUCT THE NEW ELECTRICAL VAULT INCLUDING THE INSTALLATION OF THE POWER AND CONTROL EQUIPMENT TO BE INSTALLED IN THE ELECTRICAL VAULT.
- OPEN RUNWAY 10-28 AND ALL TAXIWAY PAVEMENTS TO TRAFFIC AND CLOSE RUNWAY 3-21 TO TRAFFIC. MAKE SUFFICIENT CONNECTIONS AS NECESSARY TO POWER THE RUNWAY 10-28 AND TAXIWAY LIGHTING CIRCUITS FROM THE NEW VAULT. COORDINATE SHUTDOWN OF THE FAA ILS SYSTEM AND VASI UNITS THROUGH THE AIRPORT MANAGER TO COINCIDE WITH THE CLOSURE OF RUNWAY 3-21. WHEN WORKING ON THE RUNWAY 3-21 LIGHTING SYSTEM COMPONENTS IN THE AREA OF THE INTERSECTION WITH RUNWAY 10-28, TEMPORARILY CLOSE RUNWAY 10-28 DURING WORKING HOURS TO COMPLETE THE WORK. THE EDGE LIGHTS FOR RUNWAY 10-28 SHALL BE OPERABLE AT THE END OF EACH WORK DAY AND RUNWAY 10-28 SHALL BE OPEN TO AIR TRAFFIC DURING NIGHT TIME HOURS WHILE WORK IS BEING PERFORMED AT THE RUNWAY INTERSECTION. THE EXISTING METAL TRANSCLOSURE AND ITS CONCRETE BASE CAN ALSO BE REMOVED DURING THIS PHASE OF WORK.
- UPON COMPLETION OF THE NEW LIGHTING INSTALLATION ON RUNWAY 3-21, COORDINATE THE RE-ACTIVATION OF THE FAA ILS SYSTEM AND VASI UNITS THROUGH THE AIRPORT MANAGER AND RE-OPEN RUNWAY 3-21 TO AIR TRAFFIC. PERFORM ALL INCIDENTAL CONSTRUCTION AND ITEMS REQUIRED TO COMPLETE THE PROJECT.
- ALTERNATE SEQUENCES SUGGESTED BY THE CONTRACTOR WILL BE REVIEWED AND, IF APPROVED BY THE ENGINEER AND AIRPORT MANAGER, WILL BE PERMITTED.

CONSTRUCTION PROCEDURE NOTES

- ALL CONTRACTOR EMPLOYEES WILL PARK THEIR PERSONAL VEHICLES IN THE AREA DESIGNATED BY THE AIRPORT MANAGER FOR USE AS A VEHICLE PARKING AREA. THE CONTRACTOR WILL BE RESPONSIBLE FOR TRANSPORTING EMPLOYEES TO THE PROPOSED CONSTRUCTION SITE. ONLY AUTHORIZED CONTRACTOR VEHICLES WILL BE ALLOWED ON THE AIR OPERATIONS AREA OF THE AIRPORT AND ON THE CONSTRUCTION SITE.
- FLAGS WILL BE REQUIRED ON ALL CONTRACTOR'S VEHICLES AND EQUIPMENT USED ON THE AIRPORT OPERATIONS AREA AND CONSTRUCTION SITE. THE FLAGS SHALL BE THREE (3) FOOT SQUARE CHECKERED FLAGS (INTERNATIONAL ORANGE AND WHITE) DISPLAYED IN FULL VIEW ABOVE THE VEHICLE.
- THE CONTRACTOR WILL USE THE DESIGNATED HAUL ROUTE AND EQUIPMENT STORAGE AREA SHOWN ON THIS SHEET. IT WILL BE THE CONTRACTOR'S RESPONSIBILITY TO MAINTAIN THE DESIGNATED HAUL ROUTE AND EQUIPMENT STORAGE AREA FOR THE DURATION OF THE PROJECT. ANY DAMAGE TO EXISTING PAVEMENTS USED TO HAUL MATERIAL TO THE CONSTRUCTION SITE WILL BE REPAIRED BY THE CONTRACTOR AT HIS OWN EXPENSE TO THE SATISFACTION OF THE AIRPORT MANAGER AND THE RESIDENT ENGINEER.
- THE CONTRACTOR SHALL FURNISH, MAINTAIN, AND REMOVE ALL BARRICADES REQUIRED TO DELINEATE THE WORK AREA AND KEEP AIRCRAFT FROM ENCRANCHING INTO SAID WORK AREA. THIS REQUIREMENT SHALL BE CONSIDERED INCIDENTAL TO THE CONTRACT AND NO ADDITIONAL COMPENSATION WILL BE ALLOWED.
- CONSTRUCTION ACTIVITY CONTROL AND OPERATION AREA PROTECTION SHALL BE ACCOMPLISHED IN ACCORDANCE WITH FAA ADVISORY CIRCULAR NO. 150/5370-2E.
- THE MAXIMUM CONSTRUCTION EQUIPMENT HEIGHT UTILIZED ON THE AIRPORT FOR THIS PROJECT SHALL BE 30'.
- THIS PROJECT CONSISTS OF WORK TO INSTALL NEW EDGE LIGHTING SYSTEMS ON RUNWAY 3-21 AND RUNWAY 10-28 AND THEIR ASSOCIATED TAXIWAYS AND TO CONSTRUCT A NEW ELECTRICAL VAULT FOR THE AIRFIELD LIGHTING.
- THE CONTRACTOR SHALL COORDINATE A METHOD OF DISABLING THE RUNWAY 3-21 EDGE LIGHTS WITH THE AIRPORT MANAGEMENT SO AS TO KEEP THE LIGHTS INOPERABLE WHILE THE RUNWAY IS CLOSED TO AIR TRAFFIC. THE RUNWAY 10-28 EDGE LIGHTS SHALL ALSO BE DISABLED WHEN THAT RUNWAY IS CLOSED TO AIR TRAFFIC. THE COST OF DISABLING AND RE-ENERGIZING THE EDGE LIGHT CIRCUITS SHALL BE CONSIDERED INCIDENTAL TO THE CONTRACT.
- THE UNICOM FREQUENCY AT THE AIRPORT IS 123.0 MHZ. THE CONTRACTOR SHALL FURNISH A FLAGMAN WITH A RADIO IN HIS POSSESSION TO MONITOR AIR TRAFFIC ON THIS FREQUENCY AND DIRECT HAULING EQUIPMENT ACROSS ACTIVE RUNWAYS DURING CONSTRUCTION. NO VEHICLE, EQUIPMENT OR PERSON SHALL CROSS AN ACTIVE RUNWAY WITHOUT RECEIVING CLEARANCE TO CROSS FROM THE FLAGMAN. VEHICLE DRIVERS SHALL ALSO CONFIRM BY PERSONAL OBSERVATION THAT NO AIRCRAFT IS APPROACHING WHEN GIVEN CLEARANCE TO CROSS.
- PRIOR TO THE OPERATION OF ANY CONSTRUCTION VEHICLES WITHIN THE AIR OPERATIONS AREA, IT WILL BE REQUIRED THAT THE CONTRACTOR RECEIVE TRAINING FROM THE AIRPORT MANAGEMENT REGARDING PROCEDURES FOR VEHICLE OPERATIONS TO ENSURE AIRCRAFT SAFETY DURING CONSTRUCTION. IT WILL BE REQUIRED THAT THE CONTRACTOR RECEIVE PERMISSION FROM THE AIRPORT MANAGEMENT IN ADVANCE OF ANY ACTIVITY SPECIFIC TO THE DAY, TIME AND EXACT PURPOSE OF ANY NEED TO ENTER THE AIRPORT OPERATIONS AREA.
- THIS PROJECT WILL DISTURB LESS THAN 1 ACRE OF LAND.



GENERAL NOTES

- THE CONTRACTOR SHALL BE RESPONSIBLE FOR PROTECTING UTILITY PROPERTY FROM CONSTRUCTION OPERATIONS. PRIOR TO STARTING WORK, THE CONTRACTOR SHALL CONTACT J.U.L.I.E. (JOINT UTILITY LOCATING INFORMATION FOR EXCAVATORS) PHONE 1-800-892-0123 TO ARRANGE FOR LOCATION OF UTILITIES IN THE WORK AREA. A MINIMUM OF FORTY-EIGHT HOURS ADVANCE NOTICE IS REQUIRED FOR NON-EMERGENCY WORK.

COUNTY - KNOX
 CITY - GALESBURG
 TOWNSHIP - T. 11 N., R. 1 E. 4th P.M.
 SECTION NO. - 18 & 19

GALESBURG MUNICIPAL AIRPORT GALESBURG, ILLINOIS	
IMPROVEMENT AND SAFETY PLAN	
HUTCHISON ENGINEERING, INC. JACKSONVILLE, ILLINOIS	
DRAWN BY: T.J.D. DATE: MARCH, 2006	ILL. PROJ. NO. G86-3433 AIP PROJ. NO. 3-17-0047-88