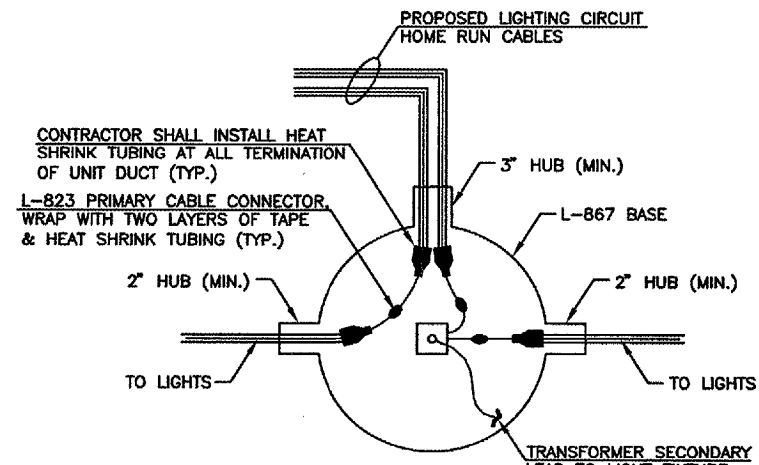
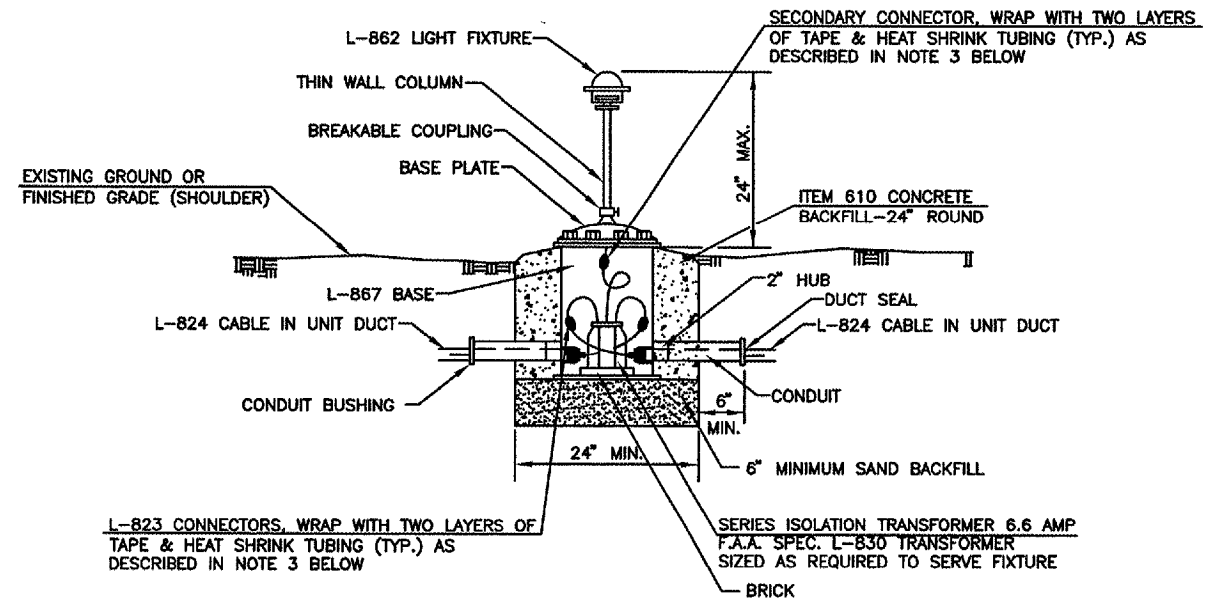


MEDIUM INTENSITY EDGE LIGHT DETAILS



NOTE:
CONTRACTOR SHALL ALSO LEAVE 3'-0" OF SLACK FOR ALL L-824 CABLES IN BASE OF LIGHT

**PROPOSED CIRCUIT CONNECTION DETAIL
BASE MOUNTED LIGHT**



NOTE:
CONTRACTOR SHALL ALSO LEAVE 3'-0" OF SLACK FOR ALL L-824 CABLES IN BASE OF LIGHT

**BASE MOUNTED
HIGH INTENSITY RUNWAY EDGE LIGHT
DETAIL**

NOTES

1. BREAKING GROOVE OF BREAKABLE COUPLINGS SHALL NOT BE OVER 3 1/2" ABOVE GROUND LINE.
2. THE CONCRETE BACKFILL FOR BASE MOUNTED LIGHTS SHALL BE TROWEL FINISHED WITH A 45° BEVELED EDGE WITH THE SURFACE SLOPING TO DRAIN. THE BASE CONCRETE BACKFILL MAY BE PRECAST AT THE CONTRACTOR'S OPTION.
3. THE PRIMARY CABLE CONNECTOR JOINTS SHALL BE WRAPPED WITH ONE LAYER OF RUBBER TAPE (SCOTCH NO. 130C) AND ONE LAYER OF PLASTIC TAPE (SCOTCH NO. 88), ONE-HALF LAPPED, EXTENDING 1 1/2" EACH SIDE OF JOINT AND COVERED WITH HEAT SHRINK TUBING.

4. A MINIMUM OF THREE FEET OF CABLE SLACK SHALL BE LEFT AT EACH STAKE MOUNTED LIGHT AND A MINIMUM OF THREE FEET OF CABLE SLACK AT EACH BASE MOUNTED LIGHT, HANDHOLE, OR MANHOLE. THIS REQUIRED SLACK WILL BE LEFT ON THE CABLE SIDE OF ALL PRIMARY CONNECTORS AND SPLICES. THIS REQUIRED SLACK WILL BE CONSIDERED INCIDENTAL TO THE CONTRACT.
5. ALL MOUNTING BOLTS SHALL BE COATED WITH AN ANTI-SEIZING LUBRICANT.
6. CONTRACTOR SHALL INSTALL HEAT SHRINK TUBING AT ALL TERMINATIONS OF UNIT DUCT (TYPICAL).

GALESBURG MUNICIPAL AIRPORT GALESBURG, ILLINOIS	
TYPICAL LIGHTING DETAILS	
HUTCHISON ENGINEERING, INC. JACKSONVILLE, ILLINOIS	
DRAWN BY: T.J.D. DATE: MARCH, 2008	ILL. PROJ. NO. G8C-3433 AP PROJ. NO. 3-17-0047-B8