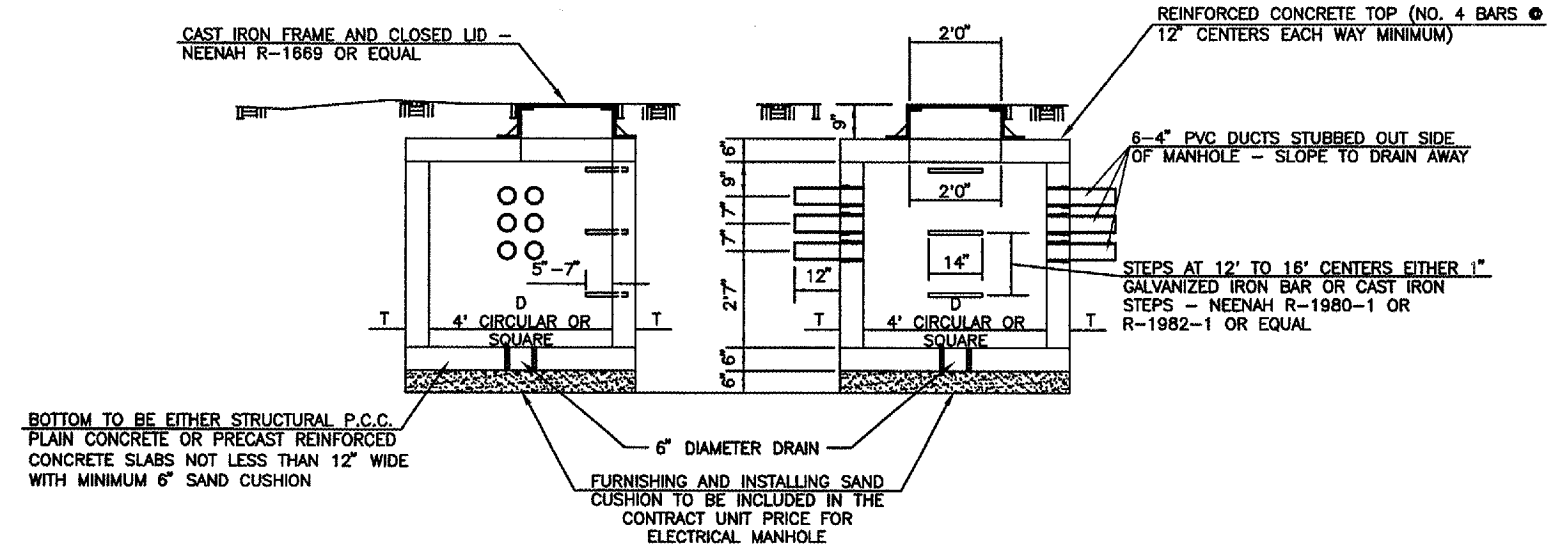


NOTES

1. INSTALL A NONCORROSIVE DISC OF 2 INCH MINIMUM DIAMETER WITH NUMBER PERMANENTLY STAMPED, CUT OUT OR ENGRAVED AT EACH LIGHTING UNIT.
2. NONCORROSIVE DISC MAY BE ATTACHED TO LIGHT FLANGE WITH SCREW OR UNDER THE HEAD OF THE BASE PLATE BOLT.

IDENTIFICATION TAG DETAIL



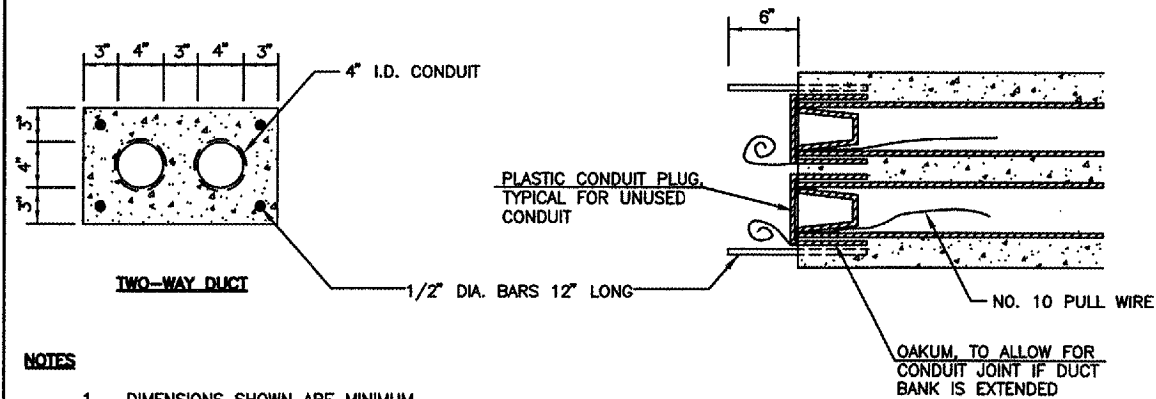
BOTTOM TO BE EITHER STRUCTURAL P.C.C. PLAIN CONCRETE OR PRECAST REINFORCED CONCRETE SLABS NOT LESS THAN 12" WIDE WITH MINIMUM 6" SAND CUSHION

NOTES

1. BRICKS, CONCRETE MASONRY UNITS AND RINGS ARE TO BE LAID IN FULL MORTAR BEDS WITH FLUSH JOINTS.
2. ELECTRICAL MANHOLE SHALL BE PROVIDED WITH CAST IRON FRAME AND CLOSED LID AS SPECIFIED.
3. THE CONTRACT UNIT PRICE FOR ELECTRICAL MANHOLE SHALL INCLUDE THE FRAME AND CLOSED LID AS SPECIFIED.

ALTERNATE MATERIAL FOR WALLS	D	T
CONCRETE BUILDING BRICK GRADE "A"	4'	8"
CONCRETE MASONRY UNITS	4'	5"
BUILDING BRICK GR. S.W. FROM CLAY OR SHALE	4'	8"
PRECAST REINFORCED CONCRETE RINGS	4'	5"
MONOLITHIC CONCRETE	4'	6"

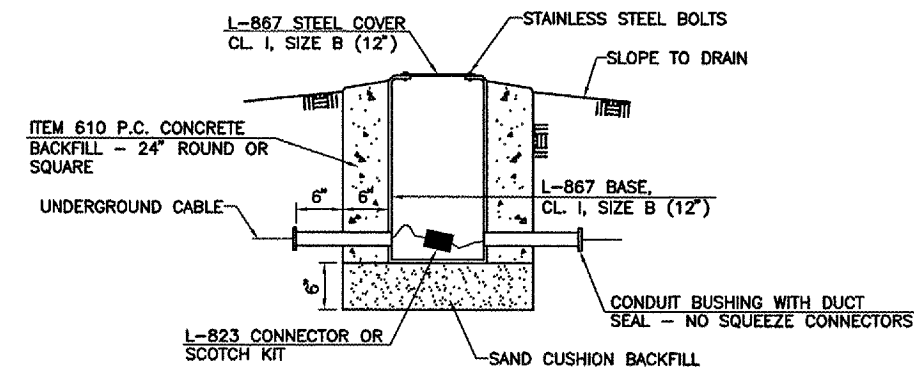
ELECTRICAL MANHOLE DETAIL



NOTES

1. DIMENSIONS SHOWN ARE MINIMUM.
2. TOP OF CONCRETE ENCASEMENT TO BE NOT LESS THAN 18" BELOW FINISHED SUBGRADE.
3. DUCT CONCRETE SHALL BE STRUCTURAL P.C. CONCRETE (PLAIN OR REINFORCED).
4. DUCT SHALL BE PLASTIC CONDUIT CONFORMING TO FEDERAL SPECIFICATIONS W-C-1094.
5. ALL DUCT TO BE 4" UNLESS OTHERWISE SPECIFIED.
6. INSTALL CONCRETE DUCT MARKER TWO FEET SQUARE AND 4" THICK, AT ALL ENDS OF DUCTS.
7. 1/2" DIAMETER 12" LONG BARS TO BE CAST IN BOTH ENDS OF THE DUCT BANK, AND ALLOWANCES MADE FOR ADDING A JOINT OF PLASTIC CONDUIT FOR FUTURE EXTENSION OF THE DUCT BANK ON BOTH ENDS.

UNDERGROUND DUCT DETAILS



SPLICE CAN DETAIL

GALESBURG MUNICIPAL AIRPORT GALESBURG, ILLINOIS	
TYPICAL LIGHTING DETAILS	
HUTCHISON ENGINEERING, INC. JACKSONVILLE, ILLINOIS	
DRAWN BY: T.J.D.	ILL. PROJ. NO. 680-3433
DATE: MARCH, 2006	AP PROJ. NO. 3-17-0047-B8