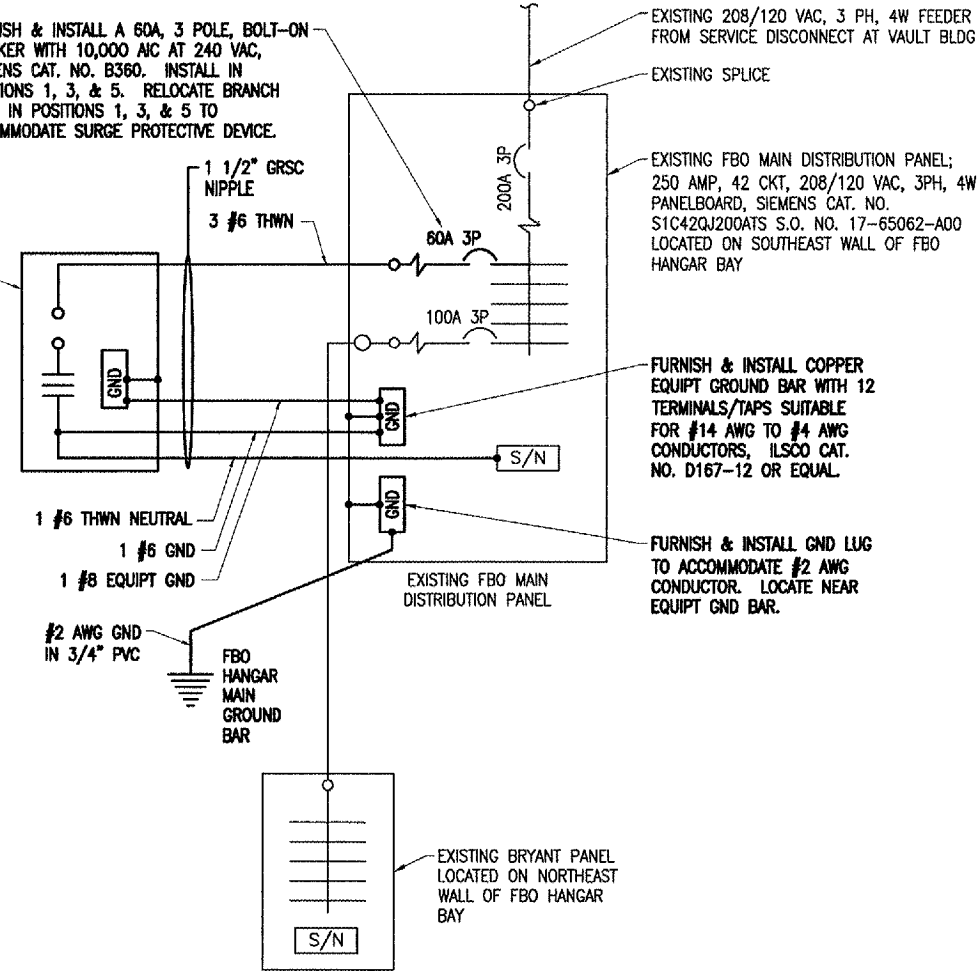
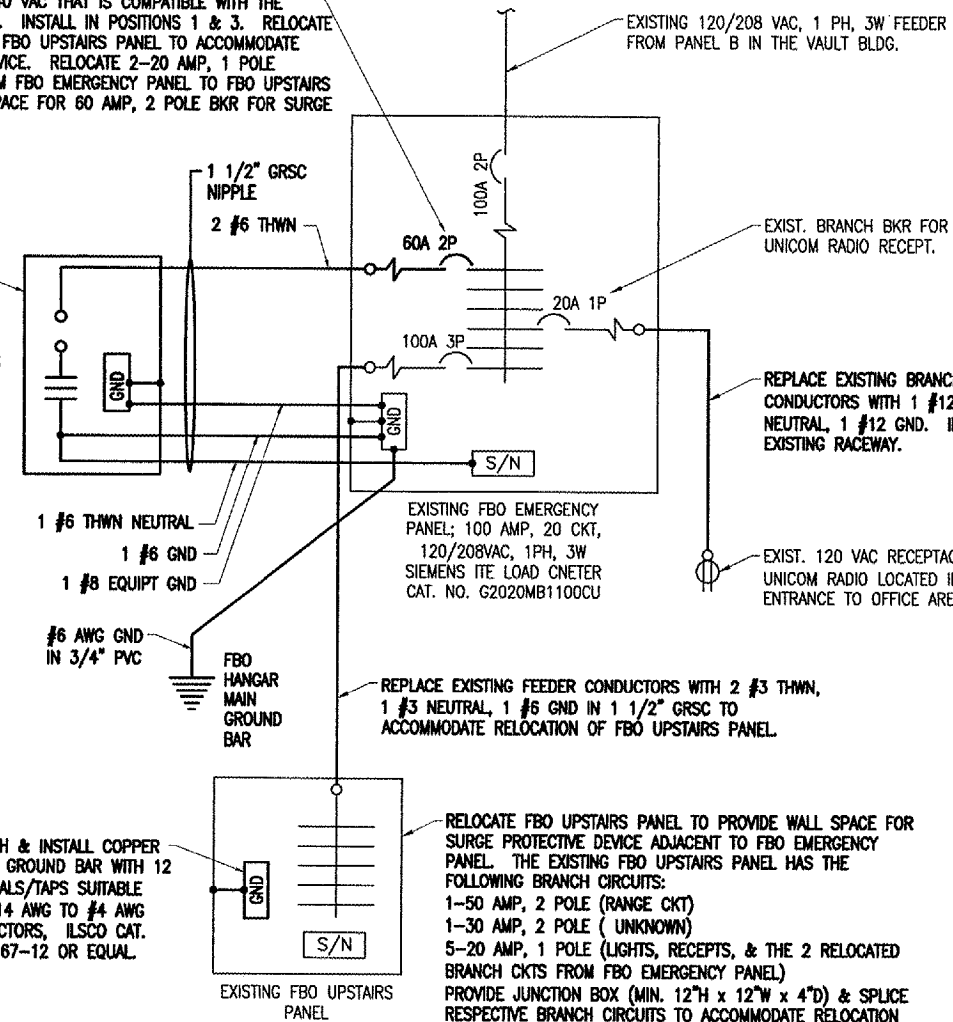


FURNISH & INSTALL A 60A, 3 POLE, BOLT-ON BREAKER WITH 10,000 AIC AT 240 VAC, SIEMENS CAT. NO. B360. INSTALL IN POSITIONS 1, 3, & 5. RELOCATE BRANCH BKRS IN POSITIONS 1, 3, & 5 TO ACCOMMODATE SURGE PROTECTIVE DEVICE.



AC SURGE PROTECTOR/TVSS, SUITABLE FOR 208/120 VAC, 3 PH, 4W PLUS GROUND SYSTEM WITH SURGE CURRENT RATING OF 240 KA, 8 x 20 MICROSECOND WAVE PER MODE & STATUS INDICATION LIGHTS IN A NEMA 12 ENCLOSURE, LIGHTNING PROTECTION CORP. MODEL LPC 2030-8U-G, OR APPROVED EQUAL. AC POWER SURGE ARRESTER/TVSS SHALL BE UL 1449, 2ND EDITION LISTED. AC SURGE PROTECTOR/TVSS DEVICE SHALL BE INSTALLED ON THE LEFT HAND SIDE OF THE PANELBOARD. MAINTAIN LEADS AS SHORT & AS STRAIGHT AS POSSIBLE FROM THE PANELBOARD TO THE AC SURGE PROTECTOR/TVSS DEVICE TO CONFORM TO NEC 285.12 & MFR RECOMMENDATIONS. PROVIDE DUCT SEAL AT CONDUIT TERMINATIONS. ALSO SEE S.P. SPECS.

FURNISH & INSTALL A 60A, 2 POLE, PLUG-ON BREAKER WITH 10,000 AIC AT 120/240 VAC THAT IS COMPATIBLE WITH THE SIEMENS LOAD CENTER. INSTALL IN POSITIONS 1 & 3. RELOCATE FEEDER BREAKER FOR FBO UPSTAIRS PANEL TO ACCOMMODATE SURGE PROTECTIVE DEVICE. RELOCATE 2-20 AMP, 1 POLE BRANCH CIRCUITS FROM FBO EMERGENCY PANEL TO FBO UPSTAIRS PANEL, TO PROVIDE SPACE FOR 60 AMP, 2 POLE BKR FOR SURGE PROTECTIVE DEVICE.



AC SURGE PROTECTOR/TVSS, SUITABLE FOR 120/240 VAC, 1 PH, 3W PLUS GROUND SYSTEM WITH SURGE CURRENT RATING OF 180 KA, 8 x 20 MICROSECOND WAVE PER MODE & STATUS INDICATION LIGHTS IN A NEMA 12 ENCLOSURE, LIGHTNING PROTECTION CORP. MODEL LPC 2020-5U-G, OR APPROVED EQUAL. AC POWER SURGE ARRESTER/TVSS SHALL BE UL 1449, 2ND EDITION LISTED. AC SURGE PROTECTOR/TVSS DEVICE SHALL BE INSTALLED ON THE LEFT HAND SIDE OF THE LOAD CENTER. MAINTAIN LEADS AS SHORT & AS STRAIGHT AS POSSIBLE FROM THE LOAD CENTER TO THE AC SURGE PROTECTOR/TVSS DEVICE TO CONFORM TO NEC 285.12 & MFR RECOMMENDATIONS. PROVIDE DUCT SEAL AT CONDUIT TERMINATIONS. ALSO SEE S.P. SPECS.

LEGEND PLATE SCHEDULE table with columns for DEVICE and LABEL, listing FBO main dist. panel, emergency panels, and upstairs panel.

LEGEND PLATES SHALL BE WEATHERPROOF ENGRAVED PLASTIC OR PHENOLIC MATERIAL, 1/4" HIGH BLOCK LETTERS ON A WHITE BACKGROUND, SECURE WITH WEATHERPROOF ADHESIVE AND/OR MACHINE SCREWS.

NEW ELECTRICAL ONE LINE DIAGRAM FOR FBO HANGAR

WORK SHOWN ON THIS SHEET IS FOR BID ALTERNATE NO. 1

NOTES

- List of 8 notes regarding work coordination, equipment standards, and safety requirements.

Project information including title 'MT. VERNON AIRPORT', drawing title 'NEW ELECTRICAL ONE LINE DIAGRAM FOR FBO HANGAR', and project number 'A.I.P. PROJ.: 3-17-0074-B12'.

Revision table with columns for DATE, REVISION, and a grid for recording changes.

HANSON logo and company information: Hanson Professional Services Inc., 1625 South Sixth Street, Springfield, Illinois 62703-2886, Office: Nationwide.

Runway 15-33 P.F.C. OVERLAY and drawing title NEW ELECTRICAL ONE LINE DIAGRAM FOR FBO HANGAR.

Vertical text on the left edge: MAR 30, 2006 2:25 PM DPE I:\AIRPORTS\MV\VERNON\819-06RW\VD\AIRPORT_SHEETS\E-602.DWG - Work-FLR