

04-28-2017 LETTING ITEM 023

STATE OF ILLINOIS
DEPARTMENT OF TRANSPORTATION

F.A.I. RTE.	SECTION	COUNTY	TOTAL SHEETS	SHEET NO.
172	(1-2) RS	ADAMS	13	1
ILLINOIS			CONTRACT NO. 72J46	

FOR INDEX OF SHEETS, SEE SHEET NO. 2

ADT = 14,000 (2016)
SU% = 12.5%
MU% = 9.8%
CRS = 7.9 (2016)
PV = 77.7%

STANDARDS

- 000001-06
- 001006
- 442001-04
- 604101-01
- 642001-02
- 701101-05
- 701400-09
- 701401-10
- 701426-09
- 701901-06
- 780001-05
- 781001-04

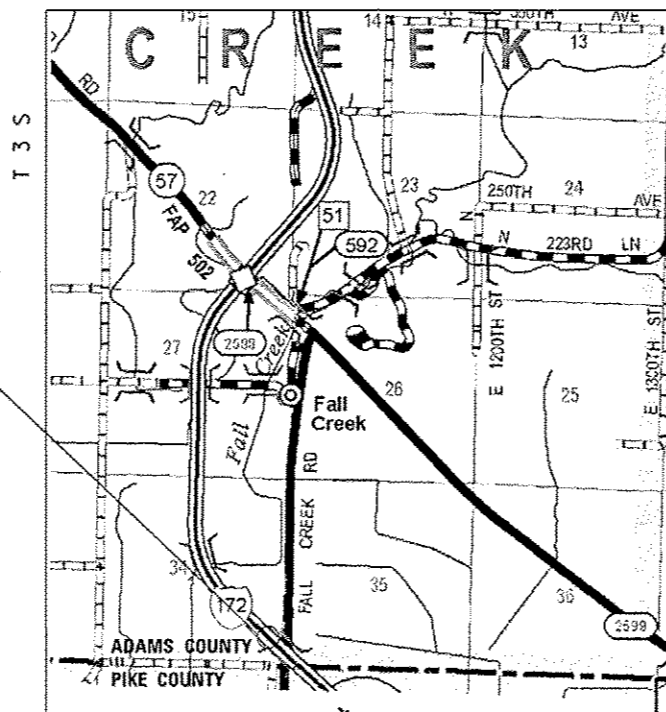
**PROPOSED
HIGHWAY PLANS**

FAI ROUTE 172 (I 172, IL. 110)
SECTION (1-2) RS
PROJECT NHPP-0172(004)
RESURFACING
ADAMS COUNTY

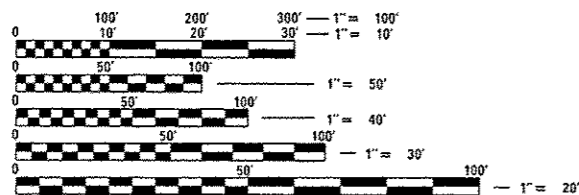
C-96-005-17



BEGIN SECTION STATION 3+00.00 (SB)
END SECTION STATION 17+15.03 (SB)



R 8 W



FULL SIZE PLANS HAVE BEEN PREPARED USING STANDARD ENGINEERING SCALES. REDUCED SIZED PLANS WILL NOT CONFORM TO STANDARD SCALES. IN MAKING MEASUREMENTS ON REDUCED PLANS, THE ABOVE SCALES MAY BE USED.

J.U.L.I.E.
JOINT UTILITY LOCATION INFORMATION FOR EXCAVATION
1-800-892-0123
OR 811

PROJECT ENGINEER: JAY WAVERING (217) 785-9046
PROJECT MANAGER: VICTOR YOUNG (217) 524-0472

CONTRACT NO. 72J46

1 INCH = 1 MILE
GROSS LENGTH = 1415.03 FT. = 0.27 MILE
NET LENGTH = 1415.03 FT. = 0.27 MILE

STATE OF ILLINOIS
DEPARTMENT OF TRANSPORTATION

SUBMITTED *February 17, 2017*

[Signature] REGIONAL ENGINEER

Mar 24 2017

Maureen M. Addis, P.E.
ENGINEER OF DESIGN AND ENVIRONMENT

Mar 24 2017

[Signature] 2
DIRECTOR OF PROGRAM DEVELOPMENT

PRINTED BY THE AUTHORITY
OF THE STATE OF ILLINOIS

GENERAL NOTES

1. THE STANDARDS INCLUDED IN THE BACK OF THESE PLANS SHALL APPLY TO THIS PROJECT.
2. THESE PLANS HAVE BEEN PREPARED USING STANDARD SYMBOLS AS INDICATED IN THESE PLANS, AND THEY SHALL TAKE PRECEDENCE OVER THOSE SHOWN ON STANDARD 000001-06 IF THERE IS A CONFLICT.
3. EXISTING RAISED REFLECTIVE PAVEMENT MARKERS SHALL BE REMOVED PRIOR TO RESURFACING.
4. THE CONTRACTOR SHALL VERIFY ALL DIMENSIONS AND CONDITIONS IN THE FIELD PRIOR TO CONSTRUCTION AND ORDERING OF MATERIALS.
5. THE CONTRACTOR SHALL PROTECT UTILITY PROPERTY FROM CONSTRUCTION OPERATIONS AS OUTLINED IN ARTICLE 107.31 OF THE STANDARD SPECIFICATIONS. AGENCIES KNOWN TO HAVE FACILITIES WITHIN THE PROJECT AREA ARE AS FOLLOWS:

J.U.L.I.E. 1-800-892-0123

ILLINOIS STATE LAW REQUIRES A 48-HOUR NOTICE BE GIVEN TO ALL UTILITIES BEFORE DIGGING. FIELD MARKING OF FACILITIES MAY BE OBTAINED BY CONTACTING J.U.L.I.E. OR FOR NON-MEMBERS, BY CONTACTING THE UTILITY COMPANY DIRECTLY.

IT IS UNDERSTOOD AND AGREED THAT THE CONTRACTOR HAS TAKEN THE FOREGOING INTO CONSIDERATION IN SUBMITTING HIS BID, AND NO ADDITIONAL COMPENSATION WILL BE ALLOWED FOR ANY DELAYS OR INCONVENIENCES CAUSED BY THE SAME.

THE INFORMATION AND DATA SHOWN OR INDICATED ON THESE IMPROVEMENT PLANS WITH RESPECT TO EXISTING UNDERGROUND FACILITIES AND UTILITIES AT OR CONTIGUOUS TO THE SITE IS BASED ON INFORMATION AND DATA FURNISHED BY THE OWNERS OF SUCH UNDERGROUND FACILITIES AND UTILITIES OR BY OTHERS. FIELD MARKINGS OF FACILITIES IN CRITICAL AREAS MAY BE OBTAINED BY PROVIDING A MINIMUM OF 96 HOURS ADVANCE NOTICE TO THE RESIDENT ENGINEER SO THAT UTILITIES CAN BE GIVEN NOTICE. NO GUARANTEE IS IMPLIED AS TO THE ACCURACY OR COMPLETENESS OF ANY SUCH INFORMATION OR DATA; AND CONTRACTOR SHALL HAVE FULL RESPONSIBILITY FOR (i) REVIEWING AND CHECKING ALL SUCH INFORMATION AND DATA, (ii) VERIFYING IF ANY CONFLICTS EXIST WITH THE PROPOSED WORK AND UNDERGROUND FACILITIES AND UTILITIES SHOWN OR INDICATED ON THE IMPROVEMENT PLANS; (iii) COORDINATION OF THE WORK WITH THE OWNERS OF SUCH UNDERGROUND FACILITIES AND UTILITIES DURING CONSTRUCTION, AND (iv) THE SAFETY AND PROTECTION OF ALL SUCH UNDERGROUND FACILITIES AND UTILITIES AND REPAIR ANY DAMAGE THERETO RESULTING FROM THE WORK AT HIS EXPENSE.

6. FULL DEPTH SAW CUTTING ON ALL EDGES FOR REMOVAL ITEMS SHALL BE INCLUDED IN THE COST OF THE REMOVAL ITEM AS INDICATED AND IN ACCORDANCE WITH SECTION 440 OF THE STANDARD SPECIFICATIONS.
7. FOR STABILIZATION, ALL TYPE III BARRICADES SHALL REQUIRE A MINIMUM OF FOUR SANDBAGS PER BARRICADE.
8. ALL AREAS DISTURBED BEYOND THE CONSTRUCTION LIMITS FOR ANY REASON SHALL BE SEEDED WITH CLASS 2 SEEDING, AS DIRECTED BY THE ENGINEER. NUTRIENTS SHALL CONFORM TO ARTICLE 250.04. FINAL SEEDING SHALL BE PERFORMED AS SOON AS POSSIBLE. THESE AREAS WILL NOT BE MEASURED FOR PAYMENT.
9. WHERE SECTION OR SUBSECTION MONUMENTS ARE ENCOUNTERED, THE ENGINEER SHALL BE NOTIFIED BEFORE SUCH MONUMENTS ARE REMOVED. THE CONTRACTOR SHALL PROTECT AND CAREFULLY PRESERVE ALL MONUMENTS UNTIL AN AUTHORIZED SURVEYOR OR AGENT HAS WITNESSED OR OTHERWISE REFERENCED THEIR LOCATION. THE CONTRACTOR SHALL BE RESPONSIBLE FOR HAVING AN AUTHORIZED SURVEYOR REESTABLISH ANY SECTION OR SUBSECTION MONUMENTS DESTROYED BY HIS/HER OPERATIONS.
10. THE FOLLOWING RATES OF APPLICATION HAVE BEEN USED TO CALCULATE THE PLAN QUANTITIES:
 GRANULAR MATERIALS 2.05 TONS / CU YD
 BITUMINOUS MATERIALS (PRIME COAT) 0.05 LBS / SQ FT (MILLED/AGED)
 0.025 LBS / SQ FT (FOG COAT BTW LIFTS)
 0.25 LBS / SQ FT (AGG BASE)
 HMA RESURFACING 112 LBS / SQ YD / IN
 SHORT TERM PAVEMENT MARKING 4 FT / 40 FT OF APPLICATION
11. THE CONTRACTOR SHALL NOTIFY THE DISTRICT 6 BUREAU OF OPERATION AT (217) 785-5312 THREE WEEKS PRIOR TO IMPLEMENTING ANY TRAFFIC CONTROL.

INDEX OF SHEETS

- 1 COVER SHEET
- 2 GENERAL NOTES
- 3-4 SUMMARY OF QUANTITIES
- 5 SCHEDULE OF QUANTITIES
- 6 TYPICAL SECTION
- 7-9 PLAN
- 10-13 DETAILS

COMMITMENTS

1. THE RESIDENT ENGINEER SHALL CONTACT STUDIES & PLANS CONCERNING ANY MAJOR PLAN CHANGES.
2. THE PROPOSED PAVEMENT MARKINGS FOR EDGE LINES SHALL BE DONE BY THE DISTRICT 6 OPERATIONS. ON COMPLETION OF THE PROJECT, THE CONTRACTOR SHALL CONTACT DISTRICT 6 OPERATIONS AT (217)785-5312 TWO WEEKS PRIOR TO MAKE ARRANGEMENTS FOR THIS WORK.

DISTRICT SIX	
EXAMINED	January 25 th 20 17
	<i>John Coleman</i>
OPERATIONS ENGINEER	
EXAMINED	January 17 20 17
	<i>Ron Chamberlain</i>
PROJECT IMPLEMENTATION ENGINEER	
EXAMINED	January 24 20 17
	<i>John P. Mag...</i>
PROGRAM DEVELOPMENT ENGINEER	

MIXTURE TABLES

Location(s):	MAINLINE	MAINLINE	SHOULDER	SHOULDER
MIXTURE USE(S):	BINDER	SURFACE	LOWER LIFT	TOP LIFT
PG:	SBS PG 70-28	SBS PG 70-28	PG 64-22	PG 64-22
DESIGN AIR VOIDS:	4.0% @ N70	4.0% @ N70	4.0% @ N50	4.0% @ N50
Mixture Composition:	IL 19.0	IL 9.5	IL 19.0	IL 9.5
FRICTION AGGREGATE:	N/A	MIX "D"	N/A	MIX "C"
Quality Management:	OCP	OCP	QC/OA	QC/OA
Mixture Sublot Size:	500 TONS	300 TONS	N/A	N/A

STATE OF ILLINOIS
DEPARTMENT OF TRANSPORTATION

FILE NAME =	USER NAME = RoberTM	DESIGNED -	REVISED -	STATE OF ILLINOIS DEPARTMENT OF TRANSPORTATION	GENERAL NOTES, INDEX OF SHEETS, COMMITMENTS, AND MIXTURE TABLES	F.A.I. RTE.	SECTION	COUNTY	TOTAL SHEETS	SHEET NO.	
		CHECKED -	REVISED -			172	(1, 2) RS	ADAMS	13	2	
		DATE -	REVISED -			CONTRACT NO. 72J46					
						ILLINOIS FED. AID PROJECT					
Default	PLOT SCALE = 1/32" = 1' / 32" / 2017			SCALE:	SHEET	OF	SHEETS	STA.	TO	STA.	

6-01002-0000

NHPP 90/10 ✓

ROADWAY

0004 ✓

RURAL ✓

CODE NO.	ITEM	UNIT	TOTAL QUANTITY	
35800100	PREPARATION OF BASE	SO YD	450	450
40600290	BITUMINOUS MATERIALS (TACK COAT)	POUND	4458	4458
40600982	HOT-MIX ASPHALT SURFACE REMOVAL - BUTT JOINT	SO YD	244	244
40600985	PORTLAND CEMENT CONCRETE SURFACE REMOVAL - BUTT JOINT	SO YD	80	80
40600990	TEMPORARY RAMP	SO YD	56	56
40603235	POLYMERIZED HOT-MIX ASPHALT BINDER COURSE, IL-19.0, N70	TON	476	476
40603540	POLYMERIZED HOT-MIX ASPHALT SURFACE COURSE, MIX "D", N70	TON	317	317
40800050	INCIDENTAL HOT-MIX ASPHALT SURFACING	TON	76	76
44200529	CLASS A PATCHES, TYPE II, 8 INCH	SO YD	125	125
44200533	CLASS A PATCHES, TYPE III, 8 INCH	SO YD	30	30
44213000	PATCHING REINFORCEMENT	SO YD	155	155
44213200	SAW CUTS	FOOT	1104	1104
48102100	AGGREGATE WEDGE SHOULDER, TYPE B	TON	170	170
48203100	HOT-MIX ASPHALT SHOULDERS	TON	577	577

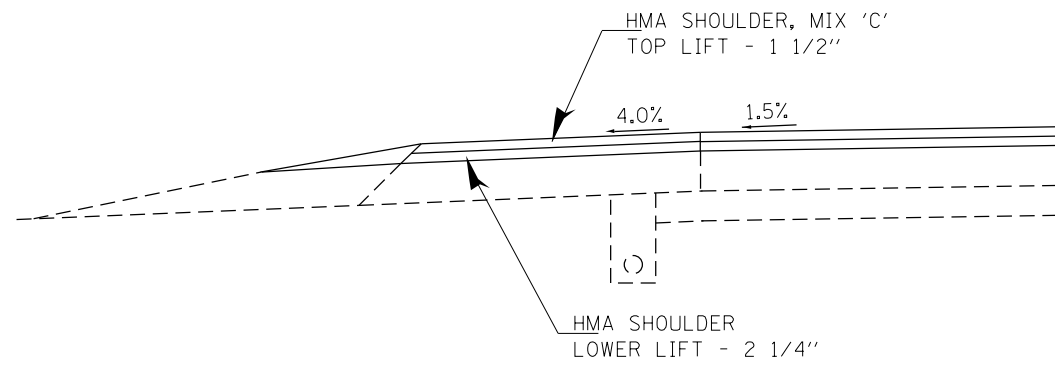
STATE OF ILLINOIS
DEPARTMENT OF TRANSPORTATION

SUMMARY OF QUANTITIES

FILE NAME *	USER NAME * Yerenskiya	DESIGNED -	REVISED -
pm\11084EBIDINTEG\Illinois.gov\PM1001\Documents\DOT Offices\District 6\Projects\0672\0672\0672\0672\CAD\Sheets\0672J46-sht-900.dwg		CHECKED -	REVISED -
Default	PLOT SCALE * 100.0000 1/ in.	DATE -	REVISED -
	PLOT DATE * 2/1/2017		

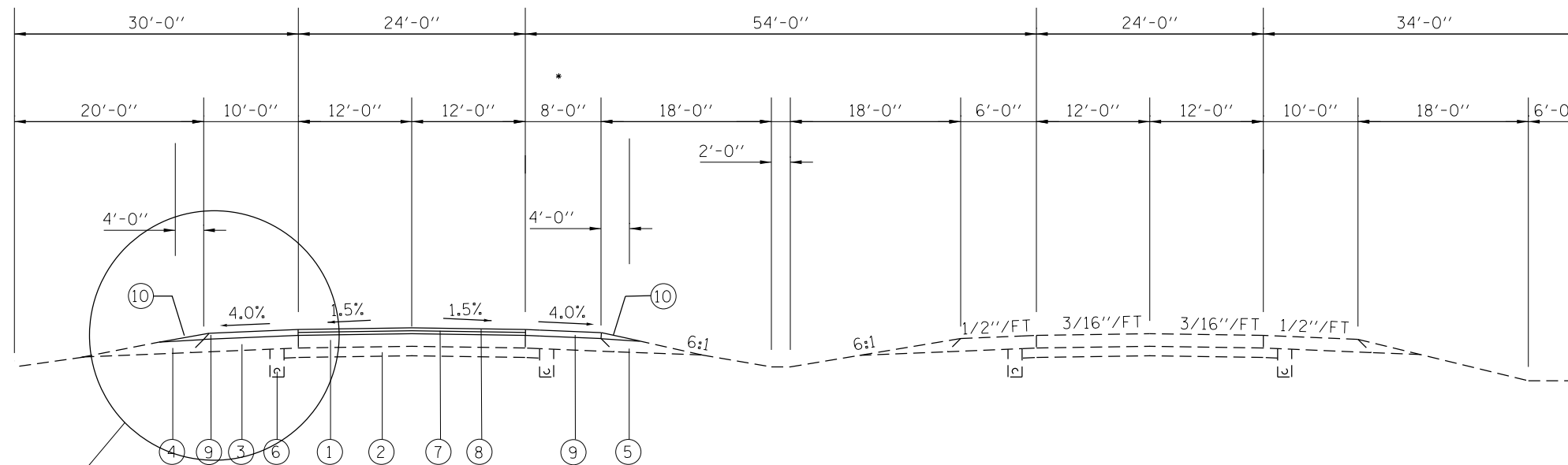
F.A.I. RTE.	SECTION	COUNTY	TOTAL SHEETS	SHEET NO.
172	(L. 2) RS	ADAMS	13	3
CONTRACT NO. 72J46			ILLINOIS FED. AID PROJECT	
SCALE:	SHEET	OF	SHEETS	STA. TO STA.

DETAIL "A"



LEGEND

- ① EXISTING 8" CONTINUOUSLY REINFORCED PORTLAND CEMENT CONCRETE PAVEMENT
- ② EXISTING 4" STABILIZED SUB-BASE
- ③ EXISTING BITUMINOUS SHOULDERS 8"
- ④ EXISTING AGGREGATE SHOULDER MATERIAL TYPE B
- ⑤ EXISTING AGGREGATE SHOULDER MATERIAL TYPE A
- ⑥ EXISTING 6" PIPE UNDERDRAIN (SEE STD 2327)
- ⑦ PROPOSED HMA BINDER IL 19.0, N70- 2 1/4"
- ⑧ PROPOSED HMA SURFACE COURSE, MIX D, IL9.5, N70, -1 1/2"
- ⑨ PROPOSED HMA SHOULDERS
- ⑩ PROPOSED AGGREGATE WEDGE SHOULDER, TYPE B

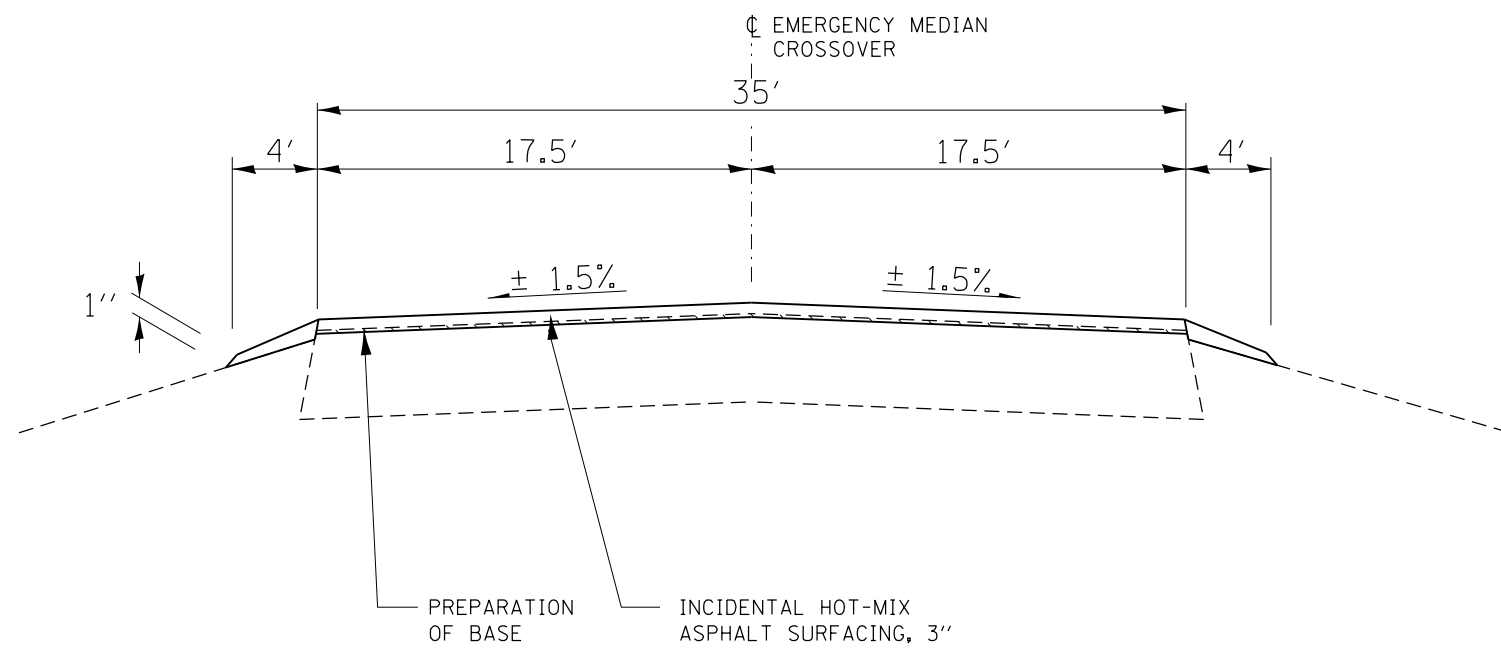


I-172 TYPICAL SECTION
STA. 3+00.00 TO STA. 17+15.03 (SB)

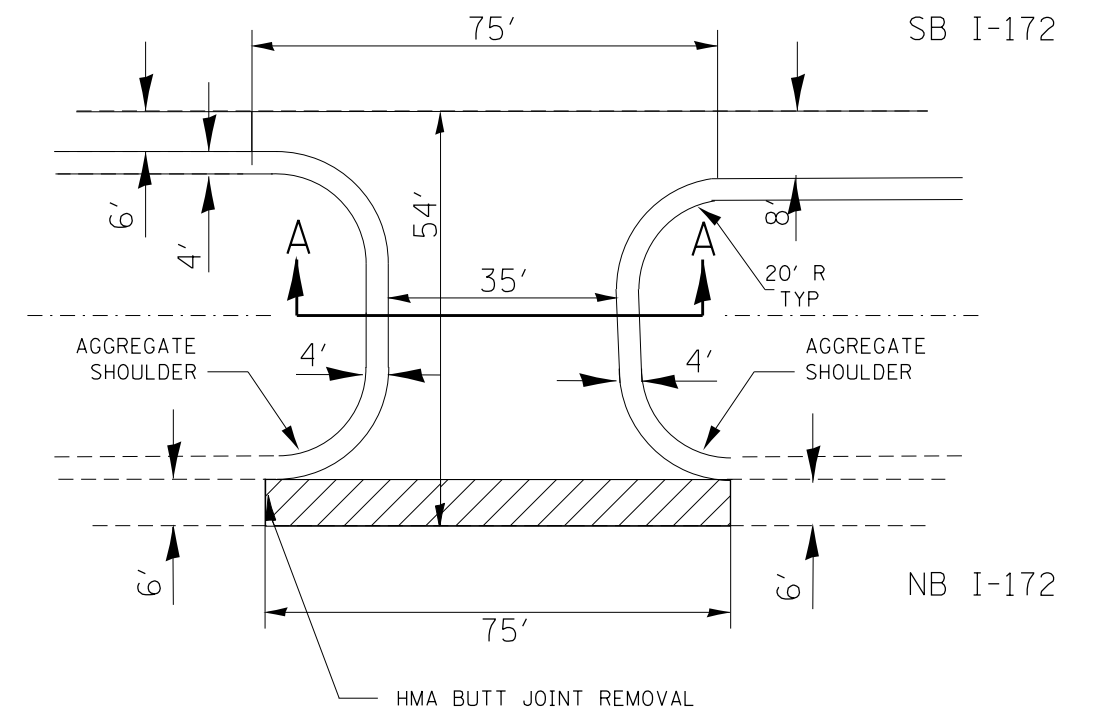
DETAIL "A"

* 6 FT MEDIAN HMA SHOULDER - STA. 3+00.00 TO STA. 6+90.50

FILE NAME =	USER NAME = Verenskif	DESIGNED -	REVISED TMR	STATE OF ILLINOIS DEPARTMENT OF TRANSPORTATION	TYPICAL SECTION				F.A.I. RTE.	SECTION	COUNTY	TOTAL SHEETS	SHEET NO.
pw:\IL\084EBIDINTEG.illinois.gov\PIWIDOT\Documents\DOT Offices\District 6\Projects\0672\Drawings\60\Sheets\0672J46-sht-typical		DRAWN	REVISED -		172	(1-2) RS	ADAMS	13	6				
Default	PLOT SCALE = 20.0000' / in.	CHECKED -	REVISED -						CONTRACT NO. 72J46				
	PLOT DATE = 2/1/2017	DATE -	REVISED -		SCALE:	SHEET	OF	SHEETS	STA.	TO	STA.	ILLINOIS FED. AID PROJECT	



SECTION A - A



PLAN VIEW

NOT TO SCALE

FILE NAME =	USER NAME = Verenskif	DESIGNED -	REVISED -
p:\11\084EBIDINTEG.illinois.gov\PI\DOT\Documents\DOT Offices\District 6\Projects\0672\Drawings\EA0\Sheets\Emergency Crossover.dgn		DRAWN -	REVISION -
Default	PLOT SCALE = 100.0000' / 1in.	CHECKED -	REVISED -
	PLOT DATE = 2/1/2017	DATE -	REVISED -

STATE OF ILLINOIS
DEPARTMENT OF TRANSPORTATION

EMERGENCY MEDIAN CROSSOVER DETAIL

SCALE: SHEET OF SHEETS STA. TO STA.

F.A.I. R.T.E.	SECTION	COUNTY	TOTAL SHEETS	SHEET NO.
172	(1-2) RS	ADAMS	13	10
CONTRACT NO. 72J46			ILLINOIS FED. AID PROJECT	

