

STATE OF ILLINOIS
DEPARTMENT OF TRANSPORTATION

F.A.P. RTE.	SECTION	COUNTY	TOTAL SHEETS	SHEET NO.
325	(21) DR	MONTGOMERY	6	1
		ILLINOIS	CONTRACT NO. 72J63	

INDEX OF SHEETS

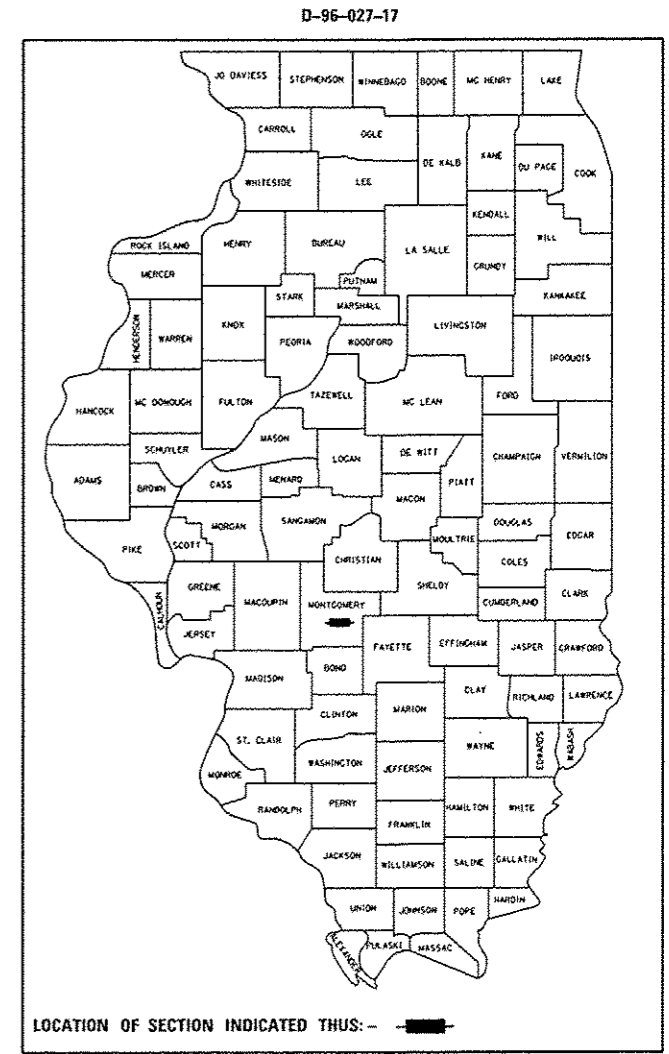
1. COVER SHEET
2. GENERAL NOTES
3. SUMMARY OF QUANTITIES
4. CROSS TIES AND BENCHMARKS
5. PLAN SHEET WITH SCHEDULES
6. CROSS SECTIONS

HIGHWAY STANDARDS
- SEE SHEET NO. 2

PROPOSED HIGHWAY PLANS

FAP ROUTE 325 (IL 16, IL 127)
SECTION (21) DR
PROJECT NHPP-0325(062)
DRAINAGE IMPROVEMENT
MONTGOMERY COUNTY

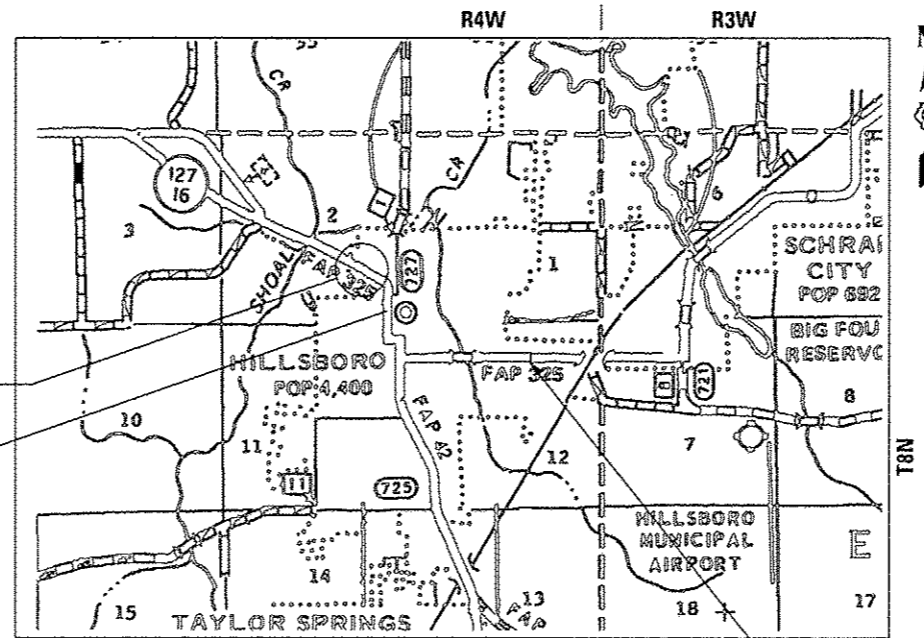
C-96-027-17



EQUATION:
PT STA 456+95.62 BK =
STA 9+92.03 AH

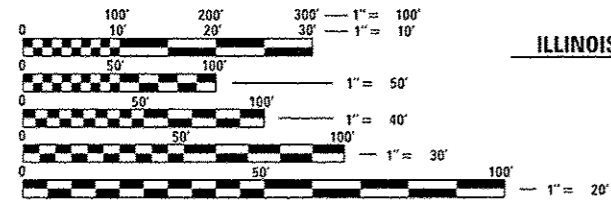
IMPROVEMENT
STA 456+49.64 TO
STA 10+20.24

ILLINOIS HIGHWAY 127/16



LOCATION MAP

ILLINOIS HIGHWAY 16



FULL SIZE PLANS HAVE BEEN PREPARED USING STANDARD ENGINEERING SCALES. REDUCED SIZED PLANS WILL NOT CONFORM TO STANDARD SCALES. IN MAKING MEASUREMENTS ON REDUCED PLANS, THE ABOVE SCALES MAY BE USED.

J.U.L.I.E.
JOINT UTILITY LOCATION INFORMATION FOR EXCAVATION
1-800-892-0123
OR 811

PROJECT ENGINEER: KEITH DONOVAN (217)782-4761
PROJECT MANAGER: TOM COX (217)557-6349

GROSS LENGTH = 74.19 FT. = 0.02 MILE
NET LENGTH = 74.19 FT. = 0.02 MILE

CONTRACT NO. 72J63

APPROVED

ADT = 9,000 (2015)

STATE OF ILLINOIS
DEPARTMENT OF TRANSPORTATION

SUBMITTED 1 February 2017
[Signature]
REGIONAL ENGINEER

Mar 24 2017
Muhammad M. Adis, P.E.
ENGINEER OF DESIGN AND ENVIRONMENT

Mar 24 2017
[Signature]
DIRECTOR OF PROGRAM DEVELOPMENTS

PRINTED BY THE AUTHORITY
OF THE STATE OF ILLINOIS

HIGHWAY STANDARDS

000001-06	STANDARD SYMBOLS, ABBREVIATIONS, AND PATTERNS
001001-02	AREAS OF REINFORCEMENT BARS
602301-04	INLET - TYPE A
602306-03	INLET - TYPE B
602601-04	PRECAST REINFORCED CONCRETE FLAT SLAB TOP
604001-04	FRAME AND LIDS TYPE 1
604036-03	GRATE TYPE B
606101-05	TYPE A GUTTER (INLET, OUTLET, & ENTRANCE
701001-02	OFF-RD OPERATIONS, 2L, 2W, MORE THAN 15' AWAY
701006-05	OFF-RD OPERATIONS, 2L, 2W, 15' TO 24' FROM PAVEMENT EDGE
701501-06	URBAN LANE CLOSURE, 2L, 2W, UNDIVIDED
701901-06	TRAFFIC CONTROL DEVICES

GENERAL NOTES:

1. ANY REFERENCE TO A STANDARD IN THESE PLANS SHALL BE INTERPRETED TO MEAN THE EDITION AS INDICATED BY THE SUBNUMBER LISTED ON THE INDEX OF SHEETS OR THE COPY OF THE STANDARD INCLUDED IN THESE PLANS.
 2. THE LOCATIONS OF THE BURIED AND ABOVE GROUND UTILITIES SHOWN IN THE PLANS ARE APPROXIMATE. THE CONTRACTOR SHALL BE RESPONSIBLE FOR PROTECTING UTILITY PROPERTY FROM CONSTRUCTION OPERATIONS AS OUTLINED IN ARTICLE 107.26 OF THE STANDARD SPECIFICATIONS, THE J.U.L.I.E. NUMBER IS (800) 892-0123. A MINIMUM OF FORTY EIGHT HOURS ADVANCED NOTICE IS REQUIRED PRIOR TO PROCEEDING WITH ANY EXCAVATION WORK ON THE PROJECT.
 3. THE THICKNESS OF HOT-MIX ASPHALT MIXTURES SHOWN ON THE PLANS IS THE NOMINAL THICKNESS. DEVIATIONS FROM THE NOMINAL THICKNESS WILL BE PERMITTED WHEN SUCH DEVIATIONS OCCUR DUE TO IRREGULARITIES IN THE EXISTING SURFACE OR BASE ON WHICH THE HOT-MIX ASPHALT MIXTURE IS PLACED.
 4. WHERE SECTION OR SUBSECTION MONUMENTS ARE ENCOUNTERED, THE ENGINEER SHALL BE NOTIFIED BEFORE SUCH MONUMENTS ARE REMOVED. THE CONTRACTOR SHALL PROTECT AND CAREFULLY PRESERVE ALL MONUMENTS UNTIL AN AUTHORIZED SURVEYOR OR AGENT HAS WITNESSED OR OTHERWISE REFERENCED THEIR LOCATION. THE CONTRACTOR SHALL BE RESPONSIBLE FOR HAVING AN AUTHORIZED SURVEYOR RE-ESTABLISH ANY SECTION OR SUBSECTION MONUMENTS DESTROYED BY HIS OPERATIONS.
 5. ALL ELEVATIONS REFER TO U.S.G.S. MEAN SEA LEVEL DATUM.
 6. UNLESS NOTED OTHERWISE, STATIONS AND OFFSETS REFER TO THE ROADWAY CENTERLINE OR BASELINE.
 7. IN ADDITION TO FIELD SURVEYS AND AERIAL SURVEYS, PLAN DIMENSIONS AND DETAILS RELATIVE TO THE EXISTING FACILITIES HAVE BEEN TAKEN FROM EXISTING PLANS AND ARE SUBJECT TO CONSTRUCTION VARIATIONS. IT SHALL BE THE CONTRACTOR'S RESPONSIBILITY TO VERIFY SUCH DIMENSIONS AND DETAILS IN THE FIELD. SUCH VARIATIONS SHALL NOT BE A CAUSE FOR ADDITIONAL COMPENSATION DUE TO A CHANGE IN THE SCOPE OF THE WORK. HOWEVER, THE CONTRACTOR WILL BE PAID FOR THE QUANTITY ACTUALLY FURNISHED AT THE UNIT PRICE BID FOR THE WORK.
 8. ACCESS MUST BE MAINTAINED TO ALL EXISTING PROPERTIES DURING CONSTRUCTION PER ARTICLE 107.09 UNLESS ARRANGEMENTS ARE MADE IN WRITING BY THE CONTRACTOR WITH THE PROPERTY OWNERS WITH A COPY TO THE ENGINEER FOR SHORT-TERM CLOSURES;
 9. THE CONTRACTOR SHALL VERIFY ALL DIMENSIONS AND CONDITIONS IN THE FIELD PRIOR TO CONSTRUCTION AND ORDERING OF MATERIALS
 10. ALL EXISTING ROAD SIGNS THAT INTERFERE WITH CONSTRUCTION SHALL BE REMOVED AND RELOCATED AS DIRECTED BY THE ENGINEER. AFTER CONSTRUCTION IS COMPLETED THE CONTRACTOR SHALL REPLACE THE SIGNS AS DIRECTED BY THE ENGINEER. THIS WORK SHALL NOT BE PAID FOR SEPARATELY BUT BE CONSIDERED INCLUDED IN THE CONTRACT. AND NO ADDITIONAL COMPENSATION WILL BE ALLOWED.
11. ALL SAW CUTS SHOWN ON THE PLAN SHEET ARE INCLUDED IN THE COST OF THE PAY ITEMS: DRIVEWAY PAVEMENT REMOVAL AND GUTTER REMOVAL.
 12. UNDERGROUND UTILITY INFORMATION WAS NOT RECEIVED AT THE TIME PLANS WENT TO LETTING. CONTACT THE PROJECT MANAGER SHOWN ON THE COVER SHEET TO DETERMINE IF UTILITY MARKUPS ARE AVAILABLE.
 13. ALL AREAS DISTURBED BY THE CONTRACTOR SHALL BE SEEDED. AS DIRECTED BY THE ENGINEER, AT THE CONTRACTOR'S EXPENSE. SEEDING CLASS 2 SHALL BE USED.

APPLICATION RATES

THE FOLLOWING RATES OF APPLICATION HAVE BEEN USED IN CALCULATING PLAN QUANTITIES:

GRANULAR MATERIALS	2.05	TON / CU YD
BITUMINOUS MATERIALS PRIME COAT	0.05	LB / SQ FT (REGULAR)
	0.025	LB / SQ FT (FOG COAT)
	0.25	LB / SQ FT (AGGREGATE)
INCIDENTAL SURFACING	0.056	TON/SQ YD*IN

MIXTURE REQUIREMENT

THE FOLLOWING MIXTURE REQUIREMENTS ARE APPLICABLE FOR THIS PROJECT	
MIX USE:	INCIDENTAL HMA
AC/PG:	PG 64-22
DESIGN AIR VOIDS:	4.0% @ N50
MIXTURE COMPOSITION:	IL 9.5
FRICTION AGGREGATE:	MIX C
QUALITY MANAGEMENT:	OC/OA
SUBLOT SIZE:	N/A

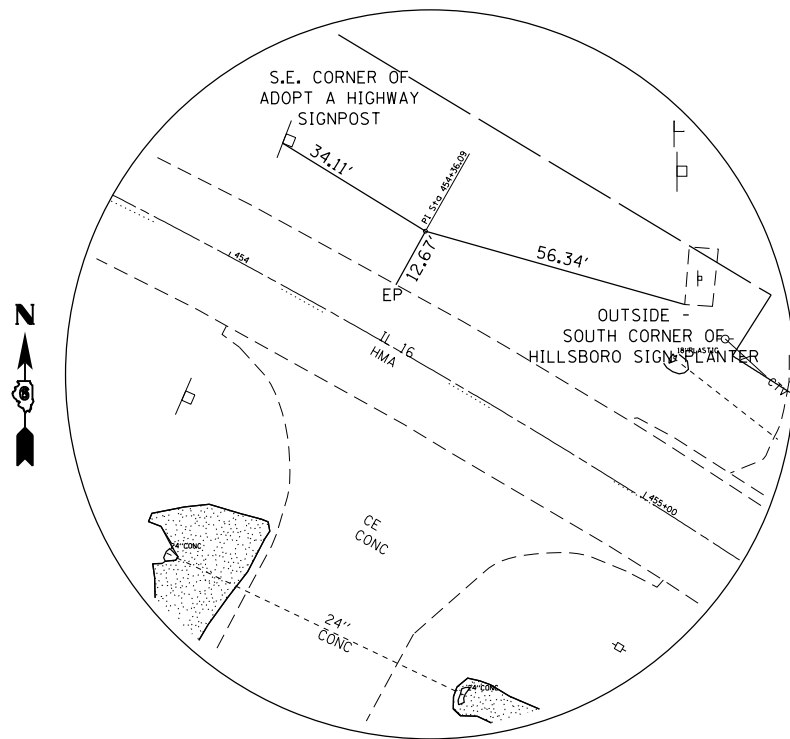
SIGNATURES

DISTRICT SIX

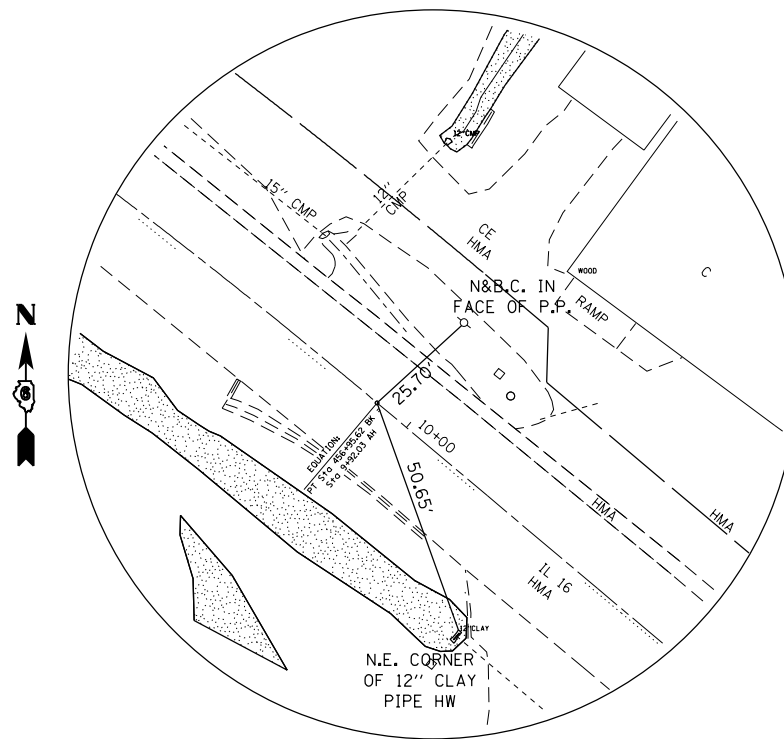
EXAMINED January 25th 20 17
John C. Wigan
 OPERATIONS ENGINEER

EXAMINED January 30 20 17
John P. Moore
 PROGRAM DEVELOPMENT ENGINEER

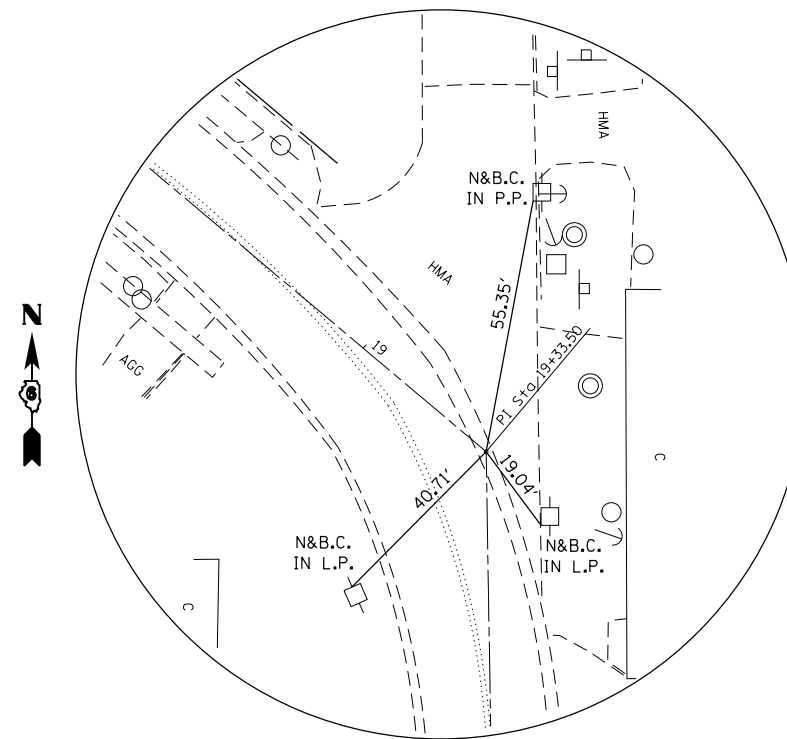
EXAMINED January 25 20 17
Ron Buchanan
 PROJECT IMPLEMENTATION ENGINEER



PI 454+36.09
(*5 REBAR W/ CAP)



P.T. STA. 456+95.62 BK = POT STA. 9+92.03 AH
(PK NAIL IN CHSLD "X")



P.I. STA. 19+33.50
(PK NAIL IN CHSLD "X")

BM-TJM1: SET A CHSLD "□" IN TOP CENTER OF CONC HW OF 12" CLAY PIPE; IN NW QUAD OF IL 16 & OAK ST.
NAVD88 = 575.123

BMJJ1: SET CHLD "□" @ TOP OF CONC 24" PIPE CULV @ TOP BELL END. SET ON S. SIDE OF IL 16 / IL 127 & E SIDE OF CONC ENT TO ACE HARDWARE.
NAVD88 = 561.778

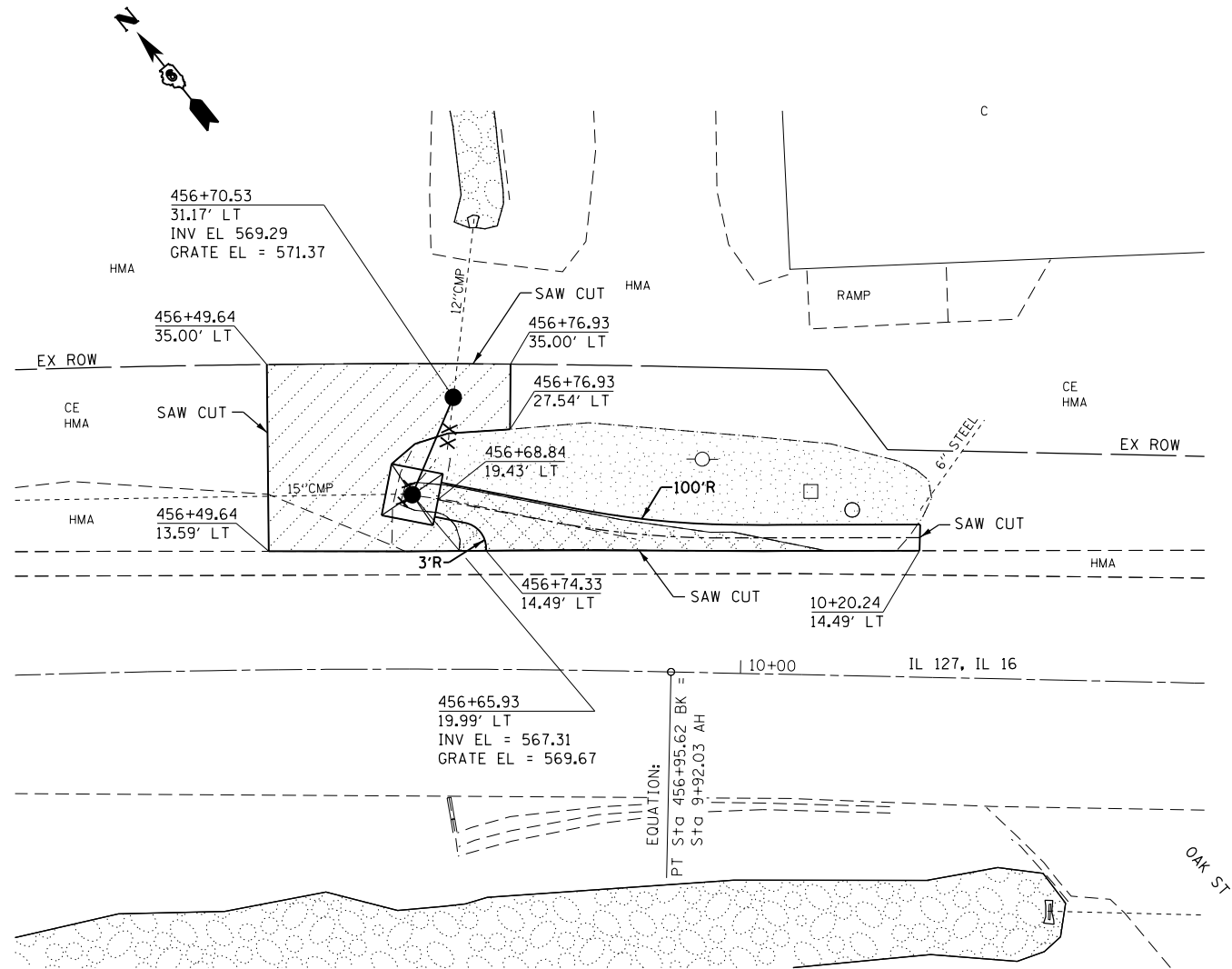
FILE NAME =	USER NAME = Verenskifa	DESIGNED -	REVISED -
pw\IL084EBIDINTEG.illinois.gov\PIWIDOT\Documents\IDOT Offices\District 6\Projects\0672\Drawings\60\Sheets\0672J63-sht-ATB.dwg		REVISION	REVISED -
Default	PLOT SCALE = 40.0000' / in.	CHECKED -	REVISED -
	PLOT DATE = 2/3/2017	DATE -	REVISED -

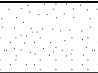





STATE OF ILLINOIS
DEPARTMENT OF TRANSPORTATION

CROSS TIES AND BENCHMARK
FAP 325 (IL 16, IL 127)

SCALE: SHEET OF SHEETS STA. TO STA.

F.A.P. RTE.	SECTION	COUNTY	TOTAL SHEETS	SHEET NO.
325	(21) DR	MONTGOMERY	6	4
CONTRACT NO. 72J63			ILLINOIS FED. AID PROJECT	



	20400800 FURNISHED EXCAVATION	CU YD
	STA 456+63 TO STA 10+21	5
	44000200 DRIVEWAY PAVEMENT REMOVAL	SQ YD
	STA 456+49.64 TO STA 456+85.73	50
	40800050 INCIDENTAL HOT-MIX ASPHALT SURFACING (8")	TON
	STA 456+49.64 TO STA 456+85.73	23
	44000400 GUTTER REMOVAL	FOOT
	STA 456+65.00 TO STA 10+09.41	48
	50104400 CONCRETE HEADWALL REMOVAL	EACH
	STA 456+65	1
	50105220 PIPE CULVERT REMOVAL	FOOT
	STA 456+69.87 TO STA 456+70.53	6
	550A0050 STORM SEWERS, CLASS A, TYPE 1 12"	FOOT
	STA 456+65.93 TO STA 456+70.53	12
	60235300 INLETS, TYPE A, TYPE 1 FRAME, CLOSED LID	EACH
	STA 456+70.53	1
	60240301 INLETS, TYPE B, TYPE 8 GRATE	EACH
	STA 456+65.93	1
	60600095 CLASS SI CONCRETE (OUTLET)	CU YD
	STA 456+68.84 TO STA 10+20.24	2.7
		2.7

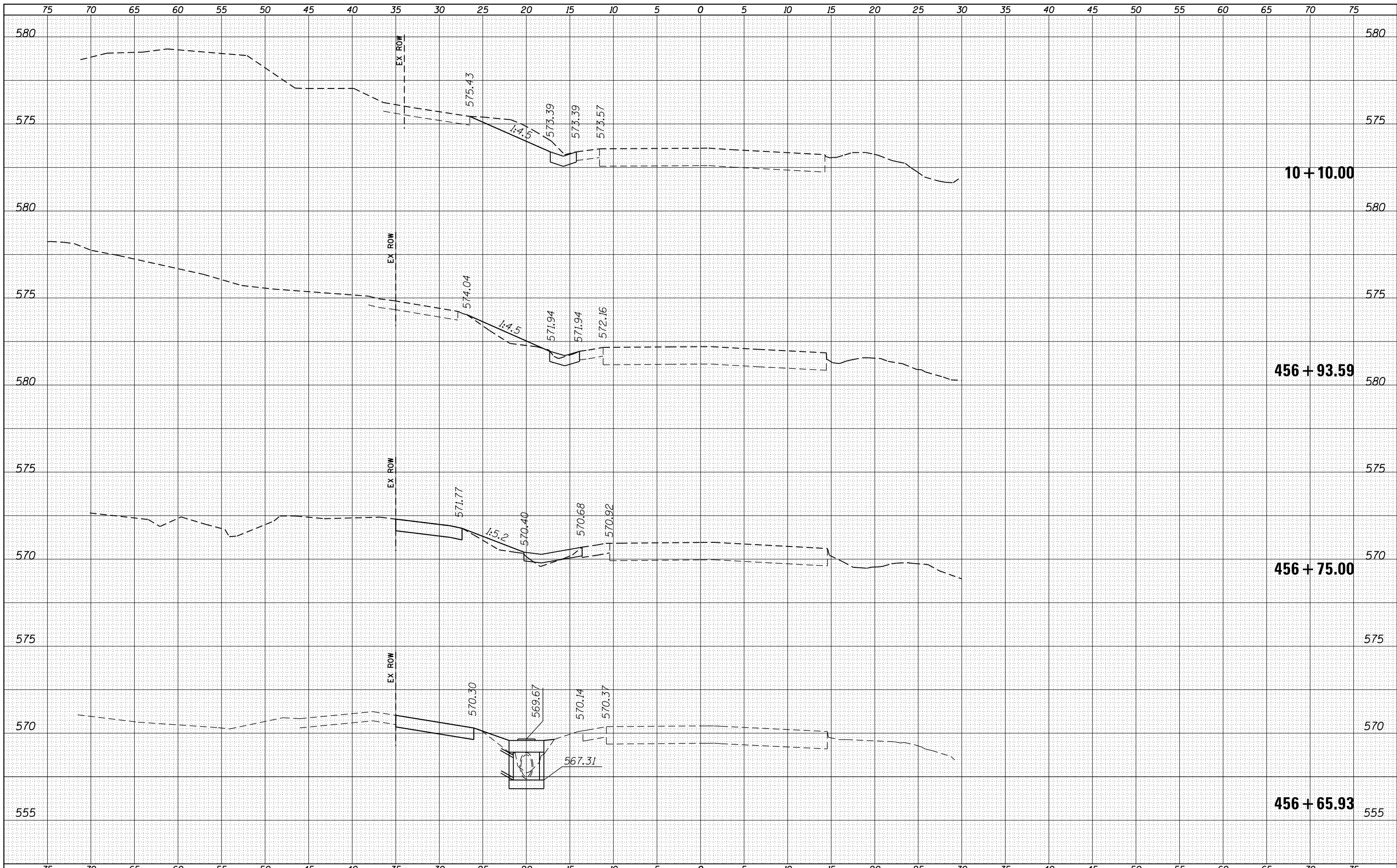
FILE NAME =	USER NAME = Verenskif	DESIGNED -	REVISED -
p:\IL\084EBIDINTEG.illinois.gov\PI\DOT\Documents\DOT Offices\District 6\Projects\0672\Drawings\60\Sheets\0672J63-sht-Plan.dwg		CHECKED -	REVISED -
Default	PLOT DATE = 2/3/2017	DATE -	REVISED -

**STATE OF ILLINOIS
DEPARTMENT OF TRANSPORTATION**

**PLAN SHEET WITH
SCHEDULE OF QUANTITIES**

SCALE: 1"=10' SHEET OF SHEETS STA. TO STA.

F.A.P. RTE.	SECTION	COUNTY	TOTAL SHEETS	SHEET NO.
325	(21) DR	MONTGOMERY	6	5
			CONTRACT NO.	72J63
ILLINOIS FED. AID PROJECT				



DATE	
BY	
NO.	
ORIGINAL SURVEY	SURVEYED
NOTE BOOK	PLOTTED
	TEMPLATE
	AREAS
	CHECKED

DATE	
BY	
NO.	
ORIGINAL SURVEY	SURVEYED
NOTE BOOK	PLOTTED
	TEMPLATE
	AREAS
	CHECKED

FILE NAME =	USER NAME = Verenskif	DESIGNED -	REVISIED -
p:\IL08\EBIDINTEG\Illinois.gov\PIDOT\Documents\IDOT Offices\District 6\Projects\D672J63\CDRAWING\Drawings\672J63-sht-XS.dgn		CHECKED -	REVISIED -
Default		DATE - 2/3/2017	REVISIED -

STATE OF ILLINOIS
DEPARTMENT OF TRANSPORTATION

CROSS SECTION SHEET
FAP 325 (IL 16, IL 127)

SCALE: 1" = 5'
 SHEET OF SHEETS STA. 456+75.00 TO STA. 10+10.00

F.A.P. RTE.	SECTION	COUNTY	TOTAL SHEETS	SHEET NO.
325	(21) DR	MONTGOMERY	6	6
CONTRACT NO. 72J63			ILLINOIS FED. AID PROJECT	