

STATE OF ILLINOIS  
DEPARTMENT OF TRANSPORTATION

F.A.I. RTE.	SECTION	COUNTY	TOTAL SHEETS	SHEET NO.
72	(84-9-4) DR, SCR	SANGAMON	7	1
		ILLINOIS	CONTRACT NO. 72J65	

INDEX OF SHEETS

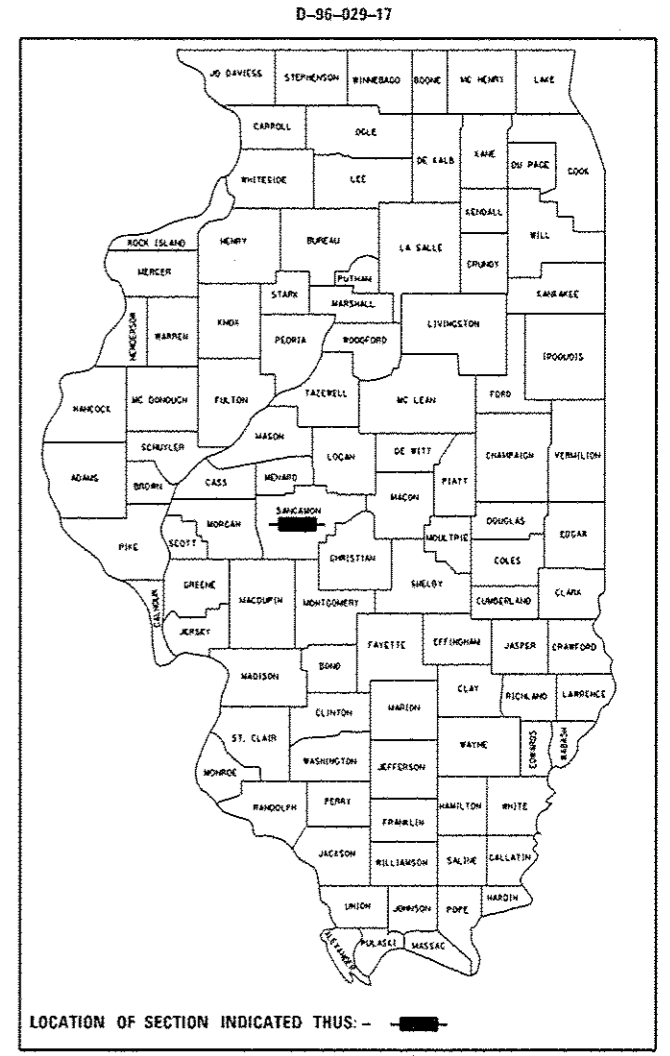
- 1 COVER SHEET
- 2 GENERAL NOTES
- 3 SUMMARY OF QUANTITIES
- 4 SCHEDULES OF QUANTITIES
- 5 PLAN SHEETS
- 6 SLOPE REPAIR DETAIL
- 7 TRAFFIC CONTROL DETAIL

PROPOSED  
HIGHWAY PLANS

FAI ROUTE 72 (I-72)  
SECTION (84-9-4) DR, SCR

DRAINAGE IMPROVEMENT  
SANGAMON COUNTY

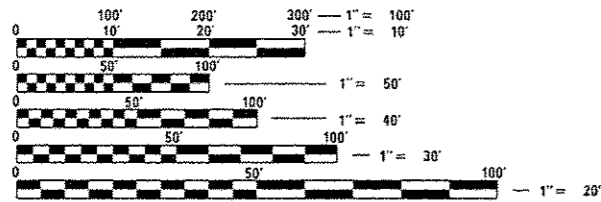
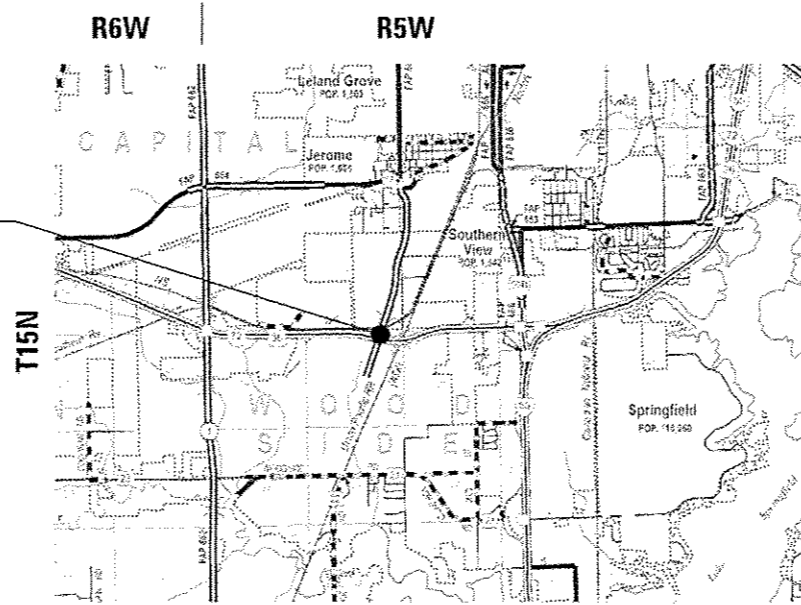
C-96-029-17



HIGHWAY STANDARDS

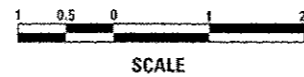
000001-06	701421-08
542301-03	701901-06
630001-11	
701101-05	
701106-02	
701400-09	
701406-11	
701411-09	

VARIOUS DRAINAGE IMPROVEMENTS  
THROUGHOUT THE MACARTHUR/  
I-72 INTERCHANGE



FULL SIZE PLANS HAVE BEEN PREPARED USING STANDARD ENGINEERING SCALES. REDUCED SIZED PLANS WILL NOT CONFORM TO STANDARD SCALES. IN MAKING MEASUREMENTS ON REDUCED PLANS, THE ABOVE SCALES MAY BE USED.

J.U.L.I.E.  
JOINT UTILITY LOCATION INFORMATION FOR EXCAVATION  
1-800-892-0123  
OR 811



GROSS LENGTH = 1500.00 FT. = 0.284 MILE  
NET LENGTH = 1500.00 FT. = 0.284 MILE

PROJECT ENGINEER: JAY EDWARDS (217) 785-0597  
PROJECT MANAGER: FRANK SHIMKUS (217) 785-9102

CONTRACT NO. 72J65

	I-72	MacArthur
ADT (2015) =	35,400	7,800
PV =	88.8%	91.2%
SU =	3.1%	6.4%
MU =	8.1%	2.4%

STATE OF ILLINOIS  
DEPARTMENT OF TRANSPORTATION

SUBMITTED February 9 2017

*Jerry M. South* JRM  
REGIONAL ENGINEER

Mar 24 2017

*Maureen M. Addis* P.E.  
ENGINEER OF DESIGN AND ENVIRONMENT

Mar 24 2017

*Paula A. ...*  
DIRECTOR OF PROGRAM DEVELOPMENT

PRINTED BY THE AUTHORITY  
OF THE STATE OF ILLINOIS

**GENERAL NOTES**

1. ANY REFERENCE TO A STANDARD IN THESE PLANS SHALL BE INTERPRETED TO MEAN THE EDITION AS INDICATED BY THE SUB NUMBER LISTED IN THE INDEX OF SHEETS OR THE COPY OF THE STANDARD INCLUDED IN THESE PLANS.
2. IN ADDITION TO FIELD SURVEYS, PLAN DIMENSIONS AND DETAILS RELATIVE TO THE EXISTING FACILITIES HAVE BEEN TAKEN FROM EXISTING PLANS AND ARE SUBJECT TO CONSTRUCTION VARIATIONS. IT SHALL BE THE CONTRACTOR'S RESPONSIBILITY TO VERIFY SUCH DIMENSIONS AND DETAILS IN THE FIELD. SUCH VARIATIONS SHALL NOT BE A CAUSE FOR ADDITIONAL COMPENSATION DUE TO A CHANGE IN THE SCOPE OF WORK; HOWEVER, THE CONTRACTOR WILL BE PAID FOR THE QUANTITY ACTUALLY FURNISHED AT THE UNIT PRICE BID FOR THE WORK.
3. ACCESS TO ALL ENTRANCES AND SIDE ROADS SHALL BE MAINTAINED AT ALL TIMES.
4. THE CONTRACTOR SHALL BE RESPONSIBLE FOR PROTECTING UTILITY PROPERTY FROM CONSTRUCTION OPERATIONS, AS OUTLINED IN ARTICLE 107.31 OF THE STANDARD SPECIFICATIONS. THE J.U.L.I.E. NUMBER IS 1-800-892-0123. A MINIMUM OF 48 HOURS ADVANCE NOTICE IS REQUIRED.
5. THE FOLLOWING RATES OF APPLICATION HAVE BEEN USED TO CALCULATE THE PLAN QUANTITIES:  
 STONE DUMPED RIPRAP                      1.75 TON/CU YD
6. RESTORATION OF THE WORK AREA SHALL BE INCIDENTAL TO THE RELATED PAY ITEMS AND SHALL BE PLACED IN KIND. ALL DAMAGE TO MOWED LAWNS SHALL BE REPLACED WITH AN APPROVED SOD, AND ALL DAMAGE TO UNMOWED FIELDS SHALL BE SEEDED IN ACCORDANCE WITH THE STANDARD SPECIFICATIONS 252 AND 250, RESPECTIVELY.
7. THE CONTRACTOR SHALL NOTIFY THE DISTRICT 6 BUREAU OF OPERATIONS AT (217) 785-5312 THREE WEEKS PRIOR TO IMPLEMENTING ANY TRAFFIC CONTROL.
8. LAYOUT OF RIPRAP MAY BE VARIED IN THE FIELD TO SUIT GROUND CONDITIONS AS DIRECTED BY THE ENGINEER.
9. EXCAVATION OF EXISTING RIPRAP AND EARTH SHALL BE INCLUDED IN THE COST OF RIPRAP PAY ITEMS.
10. COMMITMENTS:
  - 1.) THE RESIDENT ENGINEER SHALL CONTACT STUDIES AND PLANS CONCERNING ANY MAJOR PLAN CHANGE, TO MAKE SURE NO PREVIOUS COMMITMENTS (NOT LISTED) WERE MADE AFFECTING THE DESIGN AND ALLOW AN IMPROVED DESIGN FOR FUTURE PROJECTS.

<b>DISTRICT SIX</b>	
EXAMINED	January 25 <sup>th</sup> 20 17
<i>John C. O'Connell</i>	
OPERATIONS ENGINEER	

EXAMINED	January 19 20 17
<i>Rose Buchanan</i>	
PROJECT IMPLEMENTATION ENGINEER	

EXAMINED	January 30 20 17
<i>Debra P. Meyer</i>	
PROGRAM DEVELOPMENT ENGINEER	

FILE NAME *	USER NAME * shmkusf1	DESIGNED -	REVISED -	<b>STATE OF ILLINOIS DEPARTMENT OF TRANSPORTATION</b>	<b>GENERAL NOTES F.A.I. 72 (I-72)</b>	F.A.I. RTE.	SECTION	COUNTY	TOTAL SHEETS	SHEET NO.	
Default		CHECKED -	REVISED -			72	184-9-41 DR, SCR	SANGAMON	7	2	
	PLOT SCALE * 1/8"=1'-0"	DATE -	REVISED -			CONTRACT NO. 72J65		ILLINOIS FED. AID PROJECT			
	PLOT DATE * 2/3/2017					SCALE:	SHEET OF SHEETS	STA. TO STA.			

6-01015-0000  
100% STATE

CODE NO.	ITEM	UNIT	TOTAL QUANTITY	ROADWAY
				0044 URBAN
28100825	STONE DUMPED RIPRAP, CLASS B3	TON	150	150
54213657	PRECAST REINFORCED CONCRETE FLARED END SECTIONS 12"	EACH	1	1
59300100	CONTROLLED LOW-STRENGTH MATERIAL	CU YD	4	4
60100905	PIPE DRAINS 4"	FOOT	35	35
* 63301210	REMOVE AND REERECT STEEL PLATE BEAM GUARDRAIL, TYPE A	FOOT	112.5	112.5
67100100	MOBILIZATION	LSUM	1	1
70100310	TRAFFIC CONTROL AND PROTECTION, STANDARD 701421	LSUM	1	1
70100420	TRAFFIC CONTROL AND PROTECTION, STANDARD 701411	EACH	1	1
70100700	TRAFFIC CONTROL AND PROTECTION, STANDARD 701406	LSUM	1	1
X7015005	CHANGEABLE MESSAGE SIGN	CAL DA	60	60
X7010216	TRAFFIC CONTROL AND PROTECTION, (SPECIAL)	LSUM	1	1
X7010410	SPEED DISPLAY TRAILER	CAL MO	2	2

\* SPECIALTY ITEM

FILE NAME :	USER NAME : Verenshifa	DESIGNED -	REVISED -	<b>STATE OF ILLINOIS DEPARTMENT OF TRANSPORTATION</b>	<b>SUMMARY OF QUANTITIES</b>				F.A.I. RTE.	SECTION	COUNTY	TOTAL SHEETS	SHEET NO.
Default	Documents\DOT Offices\District 6\Projects\0673\BBADP\State\CAD\Sheets\0672J65-sht-500.dwg	CHECKED -	REVISED -		F.A.I. 72 (I-72)				72	(84-9-4) DR, SCR	SANGAMON	7	3
	PLDT SCALE * 100.0000' / in.	DATE -	REVISED -		SCALE:	SHEET	OF	SHEETS	STA.	TO	STA.	CONTRACT NO. 72J65	
	PLDT DATE * 2/3/2017				ILLINOIS FED. AID PROJECT								

RIPRAP SCHEDULE						
STATION TO STATION	WIDTH	LENGTH	AREA	STONE DUMPED	REM & REERECT	
FAU 8071 (MACATHUR INTERCHANGE)	(FT)	(FT)	(SQ YD)	RIPRAP	CL B3	SPBGR
MACARTHUR BLVD				(TON)	TY A	(FOOT)
STA. 785+00.00 TO STA. 785+05.00	5.00	32	18	6.9		25.0
STA. 785+50.00 TO STA. 785+55.00	5.00	32	18	6.9		
STA. 788+15.00 TO STA. 788+20.00	5.00	45	25	9.7		12.5
STA. 791+61.00 TO STA. 791+71.00	10.00	10	11	4.3		25.0
STA. 794+90.00 TO STA. 794+95.00	5.00	50	28	10.8		
STA. 794+90.00 TO STA. 794+95.00	5.00	50	28	10.8		
SUB-TOTAL				49.5		62.5
I-72						
STA. 594+00.00 TO STA. 594+90.00	90.00	5	86	33.5		
STA. 597+00.00 TO STA. 597+05.00	5.00	35	19	7.6		
SUB-TOTAL				41.1		0.0
RAMP B						
STA. 23+47.00 TO STA. 23+52.00	5.00	30	17	6.5		12.5
STA. 25+47.00 TO STA. 23+52.00	5.00	50	28	10.8		12.5
SUB-TOTAL				17.3		25.0
QUANTITY TO BE USED AT THE DESCRETION OF THE ENGINEER				42.1		25.0
TOTAL				150.0		112.5

DRAINAGE SCHEDULE		
LOCATION	PIPE	PRC FLAR
FAU 8071 (MACATHUR INTERCHANGE)	DRAINS	END SEC
MACARTHUR BLVD	4"	12"
STA. 785+50.00	(FOOT)	(EACH)
		1.0
I-72		
STA. 597+00.00	35	
	35.0	1.0





792+00

MACARTHUR BLVD

EB I-72

PROP STONE DUMPED RIPRAP CL B3 (6'x6') (SEE DETAIL A)

EX PIPE DRAIN 4"

PROP PIPE DRAIN 4"

1' MIN.

PROP STONE DUMPED RIPRAP CL B3 (6'x6')

DETAIL A

PROP STONE DUMPED RIPRAP CL B3 (10'x10')

PROP CONTROLLED LOW STRENGTH MATERIAL UNDER EX APPROACH SLAB

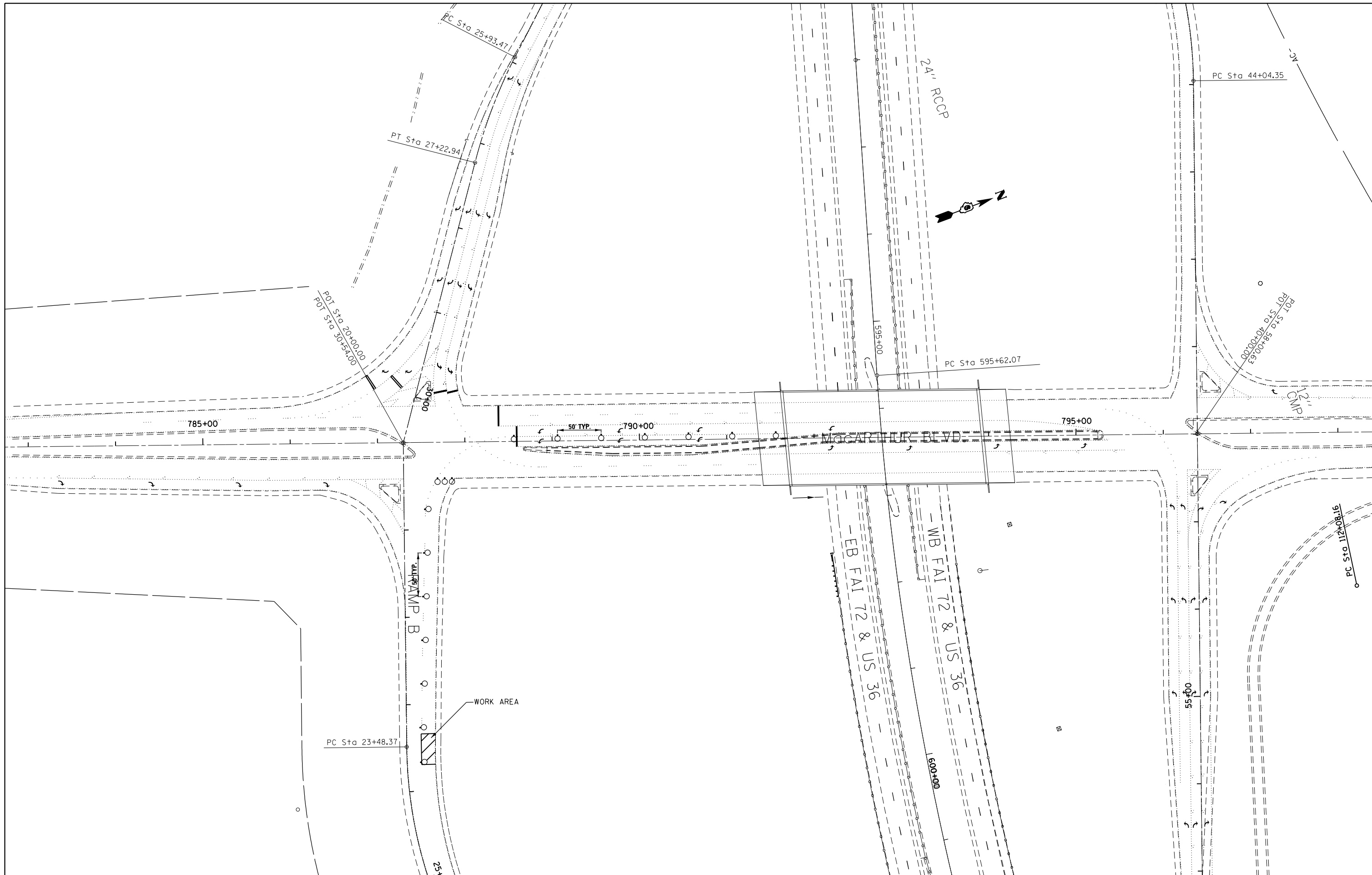
FILE NAME =	USER NAME = Verenskifa	DESIGNED -	REVISED -
p:\11084EBID\INTEG.illinois.gov\PIWIDOT\Documents\DOT Offices\District 6\Projects\0672\DRAWING\DATA\6A0\Sheets\0672J65-sht-det-a.dwg		DRAWN -	REVISED -
Default	PLOT SCALE = 40.0000' / in.	CHECKED -	REVISED -
	PLOT DATE = 2/6/2017	DATE -	REVISED -

STATE OF ILLINOIS  
DEPARTMENT OF TRANSPORTATION

RIPRAP/PIPE DRAIN DETAIL  
FAI 72 (I-72)

SCALE: SHEET OF SHEETS STA. TO STA.

F.A.I. RTE.	SECTION	COUNTY	TOTAL SHEETS	SHEET NO.
72	(84-9-4) DR, SCR	SANGAMON	7	6
CONTRACT NO.			72J65	
ILLINOIS FED. AID PROJECT				



FILE NAME =	USER NAME = Verenskifa	DESIGNED -	REVISED -
pw\11084EBIDINTEG.illinois.gov\PWIDOT\Documents\DOT Offices\District 6\Projects\D672J65-sht-traffic\Drawings\60sheets\D672J65-sht-traffic\DRAWN		DRAWN -	REVISED -
Default	PLOT SCALE = 100.0000' / in.	CHECKED -	REVISED -
	PLOT DATE = 2/6/2017	DATE -	REVISED -

**STATE OF ILLINOIS  
DEPARTMENT OF TRANSPORTATION**

**TRAFFIC CONTROL AND PROTECTION (SPECIAL)  
FAI 72 (I-72)**

SCALE: SHEET OF SHEETS STA. TO STA.

F.A.I. RTE.	SECTION	COUNTY	TOTAL SHEETS	SHEET NO.
72	(84-9-4) DR, SCR	SANGAMON	7	7
CONTRACT NO. 72J65			ILLINOIS FED. AID PROJECT	