

STATE OF ILLINOIS
DEPARTMENT OF TRANSPORTATION
DIVISION OF HIGHWAYS

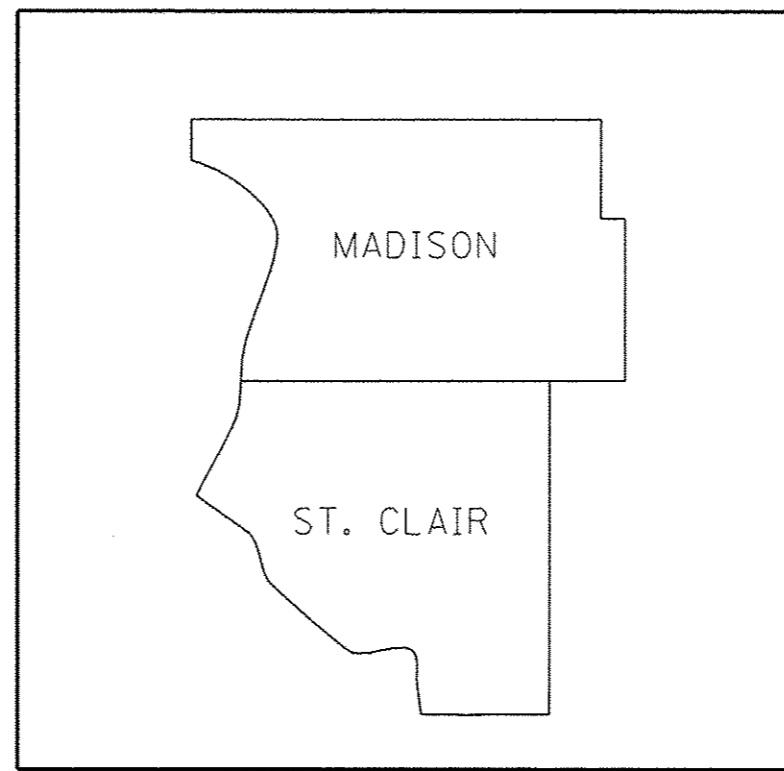
**PROPOSED
HIGHWAY PLANS**

VARIOUS ROUTES
SECTION DIST 8 GUARDRAIL 2017-4
PROJECT HSIP-000V(105)
GUARDRAIL REPAIRS
VARIOUS COUNTIES

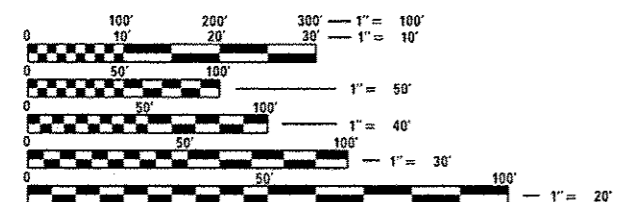
C-98-044-16

F.A. RTE.	SECTION	COUNTY	TOTAL SHEETS	SHEET NO.
VARIOUS	DIST 8 GUARDRAIL 2017-4	VARIOUS	19	1
ILLINOIS		CONTRACT NO. 76J67		

FOR INDEX OF SHEETS, SEE SHEET NO. 2



NOT TO SCALE



FULL SIZE PLANS HAVE BEEN PREPARED USING STANDARD ENGINEERING SCALES. REDUCED SIZED PLANS WILL NOT CONFORM TO STANDARD SCALES. IN MAKING MEASUREMENTS ON REDUCED PLANS, THE ABOVE SCALES MAY BE USED.

J.U.L.I.E.
JOINT UTILITY LOCATION INFORMATION FOR EXCAVATION
1-800-892-0123
OR 811

PROJECT ENGINEER: HERVE GELIN (618) 346-3179
SQUAD LEADER: CECIL DOWNING (618) 346-3186

CONTRACT NO. 76J67

STATE OF ILLINOIS
DEPARTMENT OF TRANSPORTATION

SUBMITTED Jan 27 20 17
Jeffrey Z. Kan
REGIONAL ENGINEER

Mar 24 20 17
Naureen M. Addis, P.E.
ENGINEER OF DESIGN AND ENVIRONMENT

Mar 24 20 17
James J. [Signature]
DIRECTOR OF PROGRAM DEVELOPMENT

PRINTED BY THE AUTHORITY
OF THE STATE OF ILLINOIS

INDEX OF SHEETS

- 1. COVER SHEET
- 2. INDEX OF SHEETS, HIGHWAY STANDARDS, GENERAL NOTES, AND COMMITMENTS
- 3. SUMMARY OF QUANTITIES
- 4. SCHEDULES
- 5.-9. UTILITY INFORMATION
- 10.-15. GUARDRAIL DETAILS
- 16. BRIDGE RAIL DETAILS
- 17.-19. WINGWALL MODIFICATION DETAILS

HIGHWAY STANDARDS

000001-06	701011-04
630001-11	701101-05
630101-10	701106-02
630111	701201-04
630301-07	701421-08
631032-09	701456-04
631031-15	701501-06
631046-04	701606-10
635001-02	701901-06
701001-02	725001-01
701006-05	782006

COMMITMENTS

NONE

GENERAL NOTES

- 1. NO OVERNIGHT LANE CLOSURES WILL BE ALLOWED.
- 2. NO MATERIAL SHALL BE LEFT ON OR NEAR THE ROADWAY DURING NON-WORKING HOURS.
- 3. ANY NECESSARY TRAFFIC CONTROL WILL BE PROVIDED BY THE CONTRACTOR; APPROPRIATE STANDARDS ARE LISTED IN THE PLANS AND CONTRACT DOCUMENTS.
- 4. PRIOR TO ORDERING ANY MATERIALS, THE CONTRACTOR SHALL CONFIRM THE TYPES AND SPECIFIC MANUFACTURER FOR THE GUARDRAIL.
- 5. ILLINOIS STATE LAW REQUIRES A 48-HOUR NOTICE TO BE GIVEN TO UTILITIES BEFORE DIGGING. FIELD MARKING OF FACILITIES MAY BE OBTAINED BY CONTACTING J.U.L.I.E. (PHONE 800-892-0123) OR FOR NON-MEMBERS, THE UTILITY COMPANY DIRECTLY.
- 6. WHEN NO WORK IS BEING PERFORMED, THE FLAGGERS WILL NOT BE REQUIRED. IF THE FLAGGERS ARE NOT PRESENT, THE FLAGGER SIGNS SHALL BE REMOVED OR COVERED.
- 7. THE DEPARTMENT STRONGLY ENCOURAGES THE PRIME CONTRACTOR AND THEIR SUB-CONTRACTORS TO HIRE MINORITY, WOMEN AND DISADVANTAGED INDIVIDUALS FROM ITS FEDERALLY FUNDED HIGHWAY CONSTRUCTION CAREERS TRAINING PROGRAM (HCCTP) TO HELP MEET WORKFORCE AND TRAINEE GOALS. THIS PROGRAM IS TRAINING MINORITIES, WOMEN AND DISADVANTAGED INDIVIDUALS IN HIGHWAY CONSTRUCTION-RELATED SKILLS, E.G., MATH FOR THE TRADES, JOB READINESS, TECHNICAL SKILLS COURSEWORK (CARPENTRY, CONCRETE FLATWORK, BLUEPRINT READING, SITE PLANS, SITE WORK, TOOLS USE, ETC.) AND OSHA 10 HOUR CERTIFICATION, TO PREPARE THEM FOR A CAREER IN THE HIGHWAY CONSTRUCTION TRADES. GRADUATES ARE WELL-TRAINED AND READY TO BECOME PRODUCTIVE ENTRY-LEVEL CONSTRUCTION WORKERS. CONTACT THE DISTRICT EEO OFFICE AT 618-346-3360 AND OR THE HCCTP COORDINATOR AT 618-874-6528 TO LEARN MORE ABOUT THE PROGRAM AND FOR ASSISTANCE IN MEETING WORKFORCE AND TRAINEE GOALS.
- 8. A QUANTITY OF 353 TONS OF AGGREGATE SHOULDERS TYPE B HAS BEEN INCLUDED IN THE PLANS. THIS QUANTITY IS TO ADDRESS LOW SPOTS IN THE EXISTING AGGREGATE SHOULDERS AND USE SHALL BE DIRECTED BY THE ENGINEER.
- 9. ALL DISTURBED EMBANKMENT AREAS SHALL BE SEEDDED WITH CLASS 2A SEED, FERTILIZED AND MULCHED AS PER SECTION 250.04 OF THE STANDARD SPECIFICATIONS AND AS DIRECTED BY THE ENGINEER. THE COST FOR PERFORMING THIS WORK SHALL BE CONSIDERED INCLUDED IN THE UNIT PRICE BID FOR THE ITEM OF WORK INITIATING THE DISTURBANCE.
- 10. REMOVED GUARDRAIL THAT IS NOT REPLACED ON THE SAME DAY MUST BE DELINEATED WITH LIGHTED BARICADES. NO LOCATIONS WILL BE LEFT WITHOUT EITHER LIGHTED OR RESTORED GUARDRAIL AT ANY TIME.

FILE NAME =	USER NAME = DintelmanJN	DESIGNED - _____	REVISED - _____	STATE OF ILLINOIS DEPARTMENT OF TRANSPORTATION	INDEX OF SHEETS, HIGHWAY STANDARDS, GENERAL NOTES AND COMMITMENTS	F.A. RTE.	SECTION	COUNTY	TOTAL SHEETS	SHEET NO.	
p:\11\084EBIDINTEG\illinois.gov\PIDOT\Documents\DOT Offices\District 8\Projects\0876\DRAWING\DATA\Sheets\0876J67-sht-gencor\REVISED - _____	CHECKED - _____	REVISED - _____	VARIOUS			DIST 8 GUARDRAIL 2017-4	VARIOUS	19	2		
#MODELNAME#	PLOT SCALE = 100.0000' / in.	DATE - _____	REVISED - _____			CONTRACT NO. 76J67			ILLINOIS FED. AID PROJECT		
	PLOT DATE = 3/7/2017	DATE - _____	REVISED - _____			SCALE: NONE	SHEET ____ OF ____ SHEETS	STA. _____ TO STA. _____			

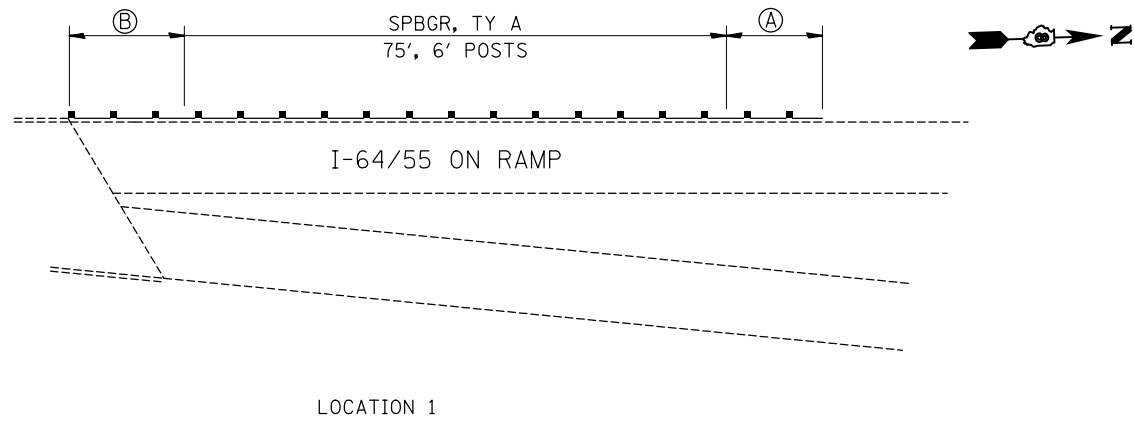
Location	Company	Address	Type	Member JULIE	Aerial	Buried
1	I-64/I-55 On Ramp, 150' E of SN 082-0206					
	Ameren Illinois	2600 N. Center Street P.O. Box 378, Maryville, IL 62062-0378	Gas & Electric	Yes	X	X
	AT&T Illinois	160 West Division St. Maryville, IL 62062	Communications	Yes	X	X
	Charter Communications	815 Charter Commons Dr., Town & Country, MO 63017	Cable TV	Yes	X	X
	City of East St Louis	301 River Park Dr, E St Louis, IL 62201-3028	Lighting	Yes	X	X
	Illinois American Water	100 N Water Works Dr, Belleville, IL 62223-9040	Water	Yes		X
	Verizon Business	7719 West 60th Place, Summit, IL 60501	Communications	Yes		X
2	IL-203, 100' N of Cahokia Canal					
	Mediacom LLC Central	90 Main St, Benton, KY 42025	Cable TV	Yes	X	X
	AT&T Illinois	160 West Division St., Maryville, IL 62062	Communications	Yes	X	X
	Ameren Illinois	2600 N. Center Street P.O. Box 378, Maryville, IL 62062-0378	Gas & Electric	Yes	X	X
	Illinois American Water	100 N Water Works Dr, Belleville, IL 62223-9040	Water	Yes		X
3	IL-111, S of I-64					
	AT&T Illinois	160 West Division St., Maryville, IL 62062	Communications	Yes	X	X
	Clearwave Communications	2 North Vine St, 2nd Floor, Harrisburg, IL 62946	Communications	Yes	X	X
	Illinois American Water	100 N Water Works Dr, Belleville, IL 62223-9040	Water	Yes		X
	Ameren Illinois	2600 N. Center St., Maryville, IL 62062-0378	Gas & Electric	Yes	X	X
	Enable Midstream Partners	5300 Northshore Cove, North Little Rock, AR 72118	Pipeline	Yes		X
	PEG Bandwidth IL, LLC	10830 E 45th Street, STE 405, Tulsa, OK 74146	Communications	Yes	X	X
	Mediacom LLC Central	90 Main St, Benton, KY 42025	Cable TV	Yes	X	X
	Buckeye Partners LP-Woodriver Pipeline	220 E. Hawthorne St, Hartford, IL 62048	Pipeline	Yes		X
	Village of Washington Park	5218 N Park Dr, Washington Park, IL 62204	Sewer	Yes		X
4	IL-203, 3000' S of Ohio Ave					
	AT&T Illinois	160 West Division St., Maryville, IL 62062	Communications	Yes	X	X
	Mediacom LLC Central	90 Main St, Benton, KY 42025	Cable TV	Yes	X	X
5	IL-161, SN 082-0095					
	AT&T Illinois	1420 Frontage Rd, O'Fallon, IL 62269	Communications	Yes	X	X
	Charter Communications	815 Charter Commons Dr., Town & Country, MO 63017	Cable TV	Yes	X	X
	Frontier Communications (South)	111 E. State St, Mascoutah IL, 62258	Communications	Yes	X	X
6	Old IL 3, W side of IL-3, 500' S of I-255					
	Ameren Illinois	1050 W Blvd, Belleville, IL 62221-4169	Gas & Electric	Yes	X	X
	Charter Communications	815 Charter Commons Dr., Town & Country, MO 63017	Cable TV	Yes	X	X
	City of Columbia	110 W Sand Bank Rd, Columbia, IL 62236	Sewer/Water	Yes		X
	Harrisonville Telephone Co	213 S Main St, Waterloo, IL 62298-1049	Communications	Yes	X	X
	Village of Dupo	107 N 2nd Street, Dupo, IL 62239	Gas/Sewer/Water	Yes		X
	Sugar Loaf Township Sewer System	240 S 5th Street, Dupo, IL 62239	Sewer	Yes		X

Location	Company	Address	Type	Member JULIE	Aerial	Buried
7	IL-157, E side of IL-157, 2000' N of IL-13					
	AT&T Illinois	1420 Frontage Rd, O'Fallon, IL 62269	Communications	Yes	X	X
	Commonfields of Cahokia Public Water District	2525 Mousette Ln, Cahokia, IL 62206	Sewer/Water	Yes		X
	Ameren Illinois	1050 W Blvd, Belleville, IL 62221-4169	Gas & Electric	Yes	X	X
	City of Centreville	5800 Bond Ave, Centreville, IL 62207	Sewer	Yes		X
8	3400' N of Carr Rd					
	Harrisonville Telephone Co	213 S Main St, Waterloo, IL 62298-1049	Communications	Yes	X	X
	New Wave Communications	1176 E 1500 North Rd, Taylorville, IL 62568	Cable TV	Yes		X
	Village of Prairie DU Rocher	209 Henry St, P.O. Box 325, Prairie Du Rocher, IL 62277	Sewer/Water	Yes	X	X
9	LAKE RD, E side of Lake Rd, 5' S of 63rd St					
	AT&T Illinois	1420 Frontage Rd, O'Fallon, IL 62269	Communications	Yes	X	X
	Ameren Illinois	1050 W Blvd, Belleville, IL 62221-4169	Gas & Electric	Yes	X	X
	City of Centreville	5800 Bond Ave, Centreville, IL 62801	Sewer	Yes		X
	City of East St Louis	301 River Park Dr, E St Louis, IL 62201-3028	Lighting	Yes	X	X
	Illinois American Water	100 N Water Works Dr, Belleville, IL 62223-9040	Water	Yes		X
	Enable Midstream Partners	5300 Northshore Cove, North Little Rock, AR 72118	Pipeline	Yes		X
	Charter Communications	815 Charter Commons Dr. Town & Country, MO 63017	Cable TV	Yes	X	X
10	IL 155, IL-155, 410' West of Ames Rd					
	New Wave Communications	1176 E 1500 North Rd, Taylorville, IL 62568	Cable TV	Yes		X
	Ameren Illinois	1050 W Blvd, Belleville, IL 62221-4169	Gas & Electric	Yes	X	X
	Harrisonville Telephone Co	213 S Main St, Waterloo, IL 62298-1049	Communications	Yes	X	X
	Village of Prairie DU Rocher	209 Henry St, P.O. Box 325, Prairie Du Rocher, IL 62277	Sewer/Water	Yes	X	X
11	Water Street- 150' N of Rock Bridge Rd					
	Frontier Communications (South)	111 E. State St, Mascoutah IL, 62258	Communications	Yes	X	X
	Ameren Illinois	1050 W Blvd, Belleville, IL 62221-4169	Gas & Electric	Yes	X	X
	City of Chester	1330 Swanwick Street, Chester, IL 62233				

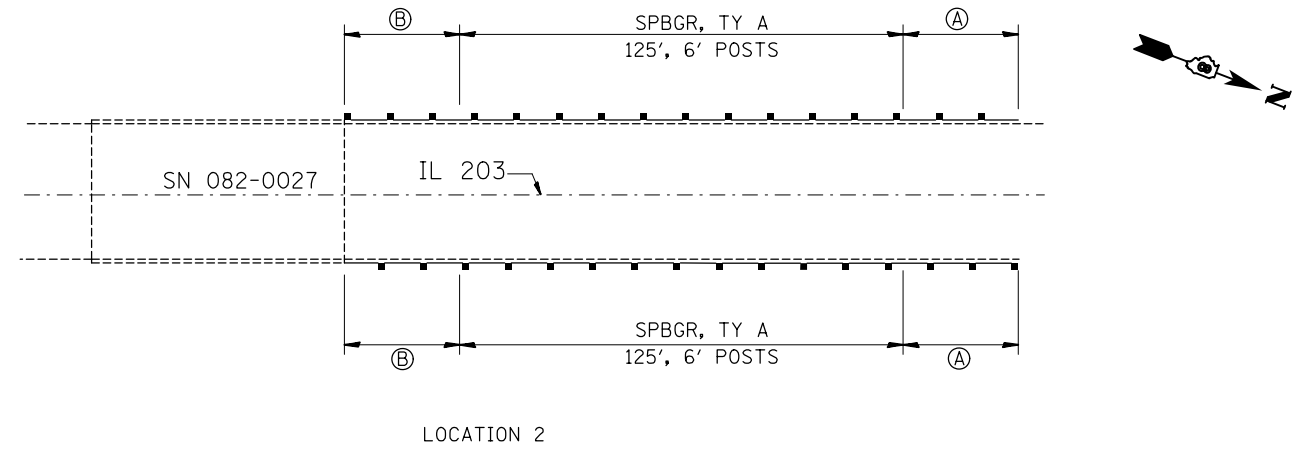
Location	Company	Address	Type	Member JULIE	Aerial	Buried
12	IL 15, E of Silver Creek					
	AT&T Illinois	1420 Frontage Rd, O'Fallon, IL 62269	Communications	Yes	X	X
	Charter Communications	815 Charter Commons Dr., Town & Country, MO 63017	Cable TV	Yes	X	X
	Village of Freeberg	14 Southgate Center, Freeberg, IL 62243	Sewer/Water/Elec	Yes	X	X
	FSH Water Commission	P.O. Box 1, Freeberg, IL 62243	Water	Yes		X
	Ameren Illinois	1050 W Blvd, Belleville, IL 62221-4169	Gas & Electric	Yes	X	X
13	IL-4 Little Mud Creek Bridge					
	Clearwave Communications	2 North Vine St, 2nd Floor, P.O. Box 808, Harrisburg, IL 62946	Communications	Yes	X	X
	Egyptian Telephone Coop. Assn.	1010 West Broadway, P.O. Box 158, Steeleville, IL 62288-0158	Communications	Yes	X	X
	Village of St. Libory	743 Rutter St, P.O. Box 342, St. Libory, IL 62282	Sewer/Water	Yes		X
	Washington County Water Co.	17575 Connecticut Rd, P.O. Box 284, Nashville, IL 62263	Water	Yes		X
	Ameren Illinois	1050 W Blvd, Belleville, IL 62221-4169	Gas & Electric	Yes	X	X
14	IL-4 W Side of IL-4 3000' S of Heintz Rd					
	AT&T Corporation	866 Rock Creek Rd, Plano, IL 60545-9571	Communications	Yes		X
	Egyptian Telephone Coop. Assn.	1010 West Broadway, P.O. Box 158, Steeleville, IL 62288-0158	Communications	Yes	X	X
	Frontier Communications (South)	111 E. State St, Mascoutah IL, 62258	Communications	Yes	X	X
	Washington County Water Co.	17575 Connecticut Rd, P.O. Box 284, Nashville, IL 62263	Water	Yes		X
	Ameren Illinois	1050 W Blvd, Belleville, IL 62221-4169	Gas & Electric	Yes	X	X
15	IL-4 E Side of IL-4 500' N of Heintz Rd					
	Tri-County Electric Cooperative, Inc.	3906 West Broadway, P.O. Box 309, Mt. Vernon, IL 62864-0309	Electric	Yes	X	
	Washington County Water Co.	17575 Connecticut Rd, P.O. Box 284, Nashville, IL 62263	Water	Yes		X
16	Water Street, Canal Waterway					
	AT&T Illinois	1420 Frontage Rd, O'Fallon, IL 62269	Communications	Yes	X	X
	Ameren Illinois	1050 W Blvd, Belleville, IL 62221-4169	Gas & Electric	Yes	X	X
	City of Columbia	110 West Sand Bank Rd, Columbia, IL 62236	Sewer/Water	Yes		X
	Charter Communications	815 Charter Commons Dr., Town & Country, MO 63017	Cable TV	Yes	X	X
	Harrisonville Telephone Company	213 S Main Street, P.O. Box 149, Waterloo, IL 62298-0149	Communications	Yes	X	X
	Prairie Du Pont Public Water District	111 Front St, East Carondelet, IL 62240	Water	Yes		X
17	IL-4 Mud Creek Bridge					
	Egyptian Telephone Coop. Assn.	1010 West Broadway, P.O. Box 158, Steeleville, IL 62288-0158	Communications	Yes	X	X
	Frontier Communications (South)	111 E. State St, Mascoutah IL, 62258	Communications	Yes	X	X
	Prairie State Generating Company, LLC	1739 New Marigold Road, Marissa, IL 62257-3438	Water	Yes		X
18	Forest BLVD. Caseyville I-255 Bridge					
	AT&T Illinois	160 West Division St., Maryville, IL 62062	Communications	Yes	X	X
	Ameren Illinois	2600 N. Center St., Maryville, IL 62062-0378	Gas & Electric	Yes	X	X
	Charter Communications	815 Charter Commons Dr., Town & Country, MO 63017	Cable TV	Yes	X	X
	Village of Caseyville	909 South Main St, Caseyville, IL 62232	Sewer/Water	Yes		X
	Department of Central Management Services	Century Network, 120 W. Jefferson, Springfield, IL 62702	Communications	Yes		X
	Mediacom LLC Central	90 Main St, Benton, KY 42025	Cable TV	Yes	X	X
19	IL-161 S Side of IL-161 1 Mile E of County Rd					
	AT&T Illinois	1420 Frontage Rd, O'Fallon, IL 62269	Communications	Yes	X	X
	Ameren Illinois	1050 W Blvd, Belleville, IL 62221-4169	Gas & Electric	Yes	X	X
	Charter Communications	815 Charter Commons Dr., Town & Country, MO 63017	Cable TV	Yes	X	X
	Windstream KDL Inc.	102 E. Schafer Street, Forsyth, IL 62535	Communications	Yes	X	X
	City of Mascoutah	3 West Main Street, Mascoutah, IL 62258-2030	Electric/Lighting	Yes	X	X
	City of Mascoutah	3 West Main Street, Mascoutah, IL 62258-2030	Sewer/Water	Yes		X
	Mid America St. Louis Airport	9768 Airport Blvd, Suite 100, P.O. Box 3, Mascoutah, IL 62258-5500	Sewer/Water	Yes		X
	Mid America St. Louis Airport	9768 Airport Blvd, Suite 100, P.O. Box 3, Mascoutah, IL 62258-5500	Electric/Telephone	Yes	X	X

Location	Company	Address	Type	Member JULIE	Aerial	Buried
20	St Clair County- IL-3 300' S of Railroad Bridge					
	AT&T Illinois	1420 Frontage Road, O'Fallon, IL 62269	Communications	Yes	X	X
	Charter Communications	815 Charter Commons Dr. Town & Country, MO 63017	Cable TV	Yes	X	X
	City of East St. Louis	301 Riverpark Drive, East St. Louis, IL 62201	Lighting	Yes	X	X
	Illinois American Water	100 N. Water Works Drive, Belleville, IL 62223	Water	Yes		X
	Laclede Pipeline	700 Market, 3rd Floor, St Louis, MO 63101	Pipeline	Yes		X
	MCI- Attn: OSP National Support Investigations	2400 N Glenville Dept 42864/107, Richardson, TX 75802	Communications	Yes	X	X
21	IL 3, 500' N of Alby St.					
	City of Alton	Public Works Dept, #2 Emma Kaus Ln, Alton, IL 62002	Lighting/Sewer	Yes	X	X
	AT&T Illinois	160 West Division St., Maryville, IL 62062	Communications	Yes	X	X
	Ameren Illinois	700 Oakwood Ave., Alton, IL 62002	Gas & Electric	Yes	X	X
	Village of Godfrey	6810 Godfrey Rd, Godfrey, IL 62035	Sewer	Yes		X
	Charter Communications	815 Charter Commons Dr., Town & Country, MO 63017	Cable TV	Yes	X	X
	Illinois American Water	100 N Water Works Dr, Belleville, IL 62223-9040	Water	Yes		X
22	IL 3, 200' S of Niedringhaus Ave					
	AT&T Illinois	160 West Division St., Maryville, IL 62062	Communications	Yes	X	X
	City of Granite City	Public Works Dept, 2301 Adams St, Granite City, IL 62040-3394	Sewer	Yes		X
	Illinois American Water	100 N Water Works Dr, Belleville, IL 62223-9040	Water	Yes		X
	Ameren Illinois	2600 N. Center St., Maryville, IL 62062-0378	Gas & Electric	Yes	X	X
	Level 3 Communications, LLC	Network Relocations Dept, 1025 Eldorado Blvd, Bloomfield CO, 80021	Communications	Yes		X
	Charter Communications	815 Charter Commons Dr., Town & Country, MO 63017	Cable TV	Yes	X	X
	Tri City Regional Port District	1635 W First Street, Granite City IL 62040-1838	Sew/Water/Elec	Yes	X	X
23	US 67, 200' S of Elm St					
	City of Alton	Public Works Dept, #2 Emma Kaus Ln, Alton, IL 62002	Lighting/Sewer	Yes	X	X
	AT&T Illinois	160 West Division St., Maryville, IL 62062	Communications	Yes	X	X
	Ameren Illinois	700 Oakwood Ave., Alton, IL 62002	Gas & Electric	Yes	X	X
	Charter Communications	815 Charter Commons Dr., Town & Country, MO 63017	Cable TV	Yes	X	X
	Illinois American Water	100 N Water Works Dr, Belleville, IL 62223-9040	Water	Yes		X
24	US 67, 50' S of Alby St					
	City of Alton	Public Works Dept, #2 Emma Kaus Ln, Alton, IL 62002	Lighting/Sewer	Yes	X	X
	AT&T Illinois	160 West Division St., Maryville, IL 62062	Communications	Yes	X	X
	Ameren Illinois	700 Oakwood Ave., Alton, IL 62002	Gas & Electric	Yes	X	X
	Charter Communications	815 Charter Commons Dr., Town & Country, MO 63017	Cable TV	Yes	X	X
	Illinois American Water	100 N Water Works Dr, Belleville, IL 62223-9040	Water	Yes		X

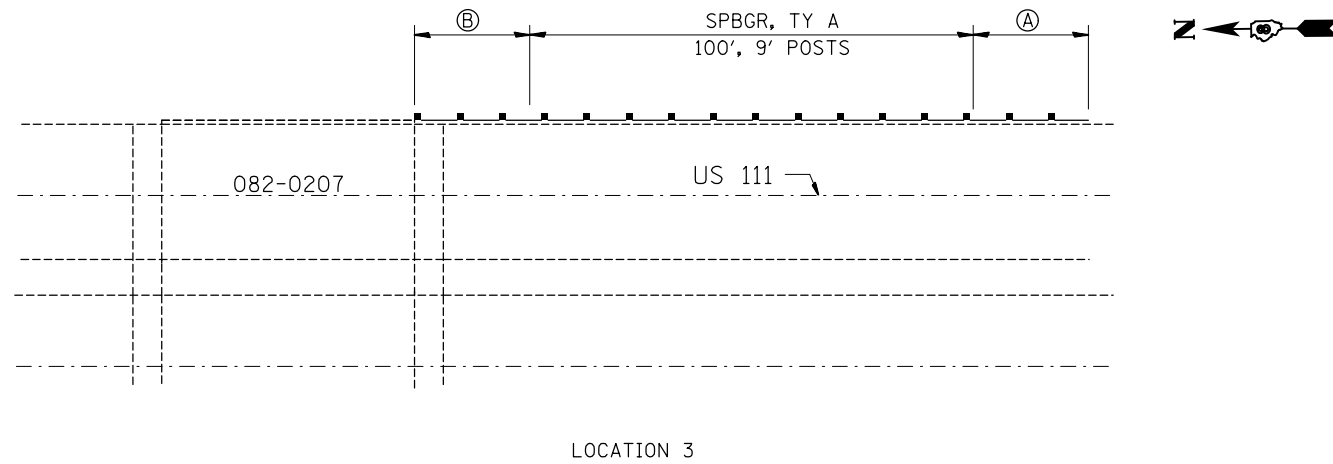
Location	Company	Address	Type	Member JULIE	Aerial	Buried
25	IL 160, 100' S of Landolt Rd					
	Ameren Illinois	2600 N. Center St., Maryville, IL 62062-0378	Gas & Electric	Yes	X	X
	Charter Communications	815 Charter Commons Dr., Town & Country, MO 63017	Cable TV	Yes	X	X
	Alhambra-Grantfork Telephone Co.	114 Wall St, Alhambra IL, 62001	Communications	Yes	X	X
	Frontier Communications (South)	111 E. State St, Mascoutah IL, 62258	Communications	Yes	X	X
	Village of Grantfork	4666 State Route 160, Highland, IL 62249	Sewer/Water	Yes		X
	City of Highland	1113 Broadway, Highland, IL 62249	Ele/Sew/FO/Water	Yes	X	X
26	IL 3, W side, 50' S of IL-140					
	City of Alton	Public Works Dept, #2 Emma Kaus Ln, Alton, IL 62002	Lighting/Sewer	Yes	X	X
	AT&T Illinois	160 West Division St., Maryville, IL 62062	Communications	Yes	X	X
	Ameren Illinois	700 Oakwood Ave., Alton, IL 62002	Gas & Electric	Yes	X	X
	Charter Communications	815 Charter Commons Dr., Town & Country, MO 63017	Cable TV	Yes	X	X
	Illinois American Water	100 N Water Works Dr, Belleville, IL 62223-9040	Water	Yes		X
27	IL 157, 10' South of Burdick Creek Rd.					
	AT&T Illinois	1420 Frontage Road, O'Fallon, IL 62269	Communications	Yes	X	X
	Charter Communications	815 Charter Commons Dr. Town & Country, MO 63017	Cable TV	Yes	X	X
	Ameren Illinois	2600 N. Center St. Maryville, IL 62062-0378	Gas & Electric	Yes	X	X
	Southwestern Electric Coop	525 U.S. Route 40, Greenville, IL 62246	Electric	Yes	X	X
	Village of Maryville	2520 North Center, Maryville, IL 62062	Sewer/Water	Yes		X
	Consolidated Communications	121 South 17th Street, Mattoon, IL 61938-7001	Communications	Yes	X	X



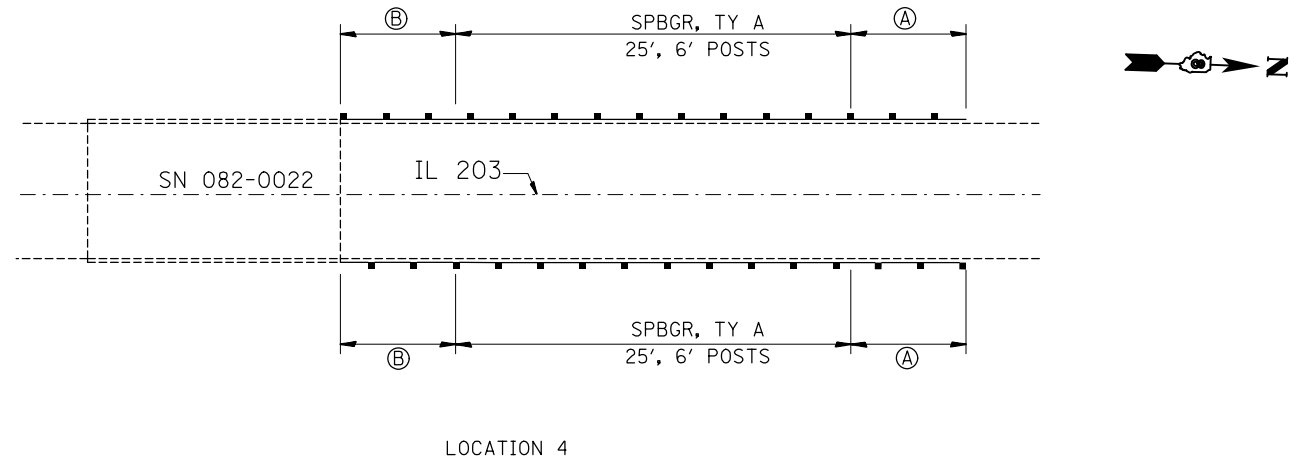
NOT TO SCALE



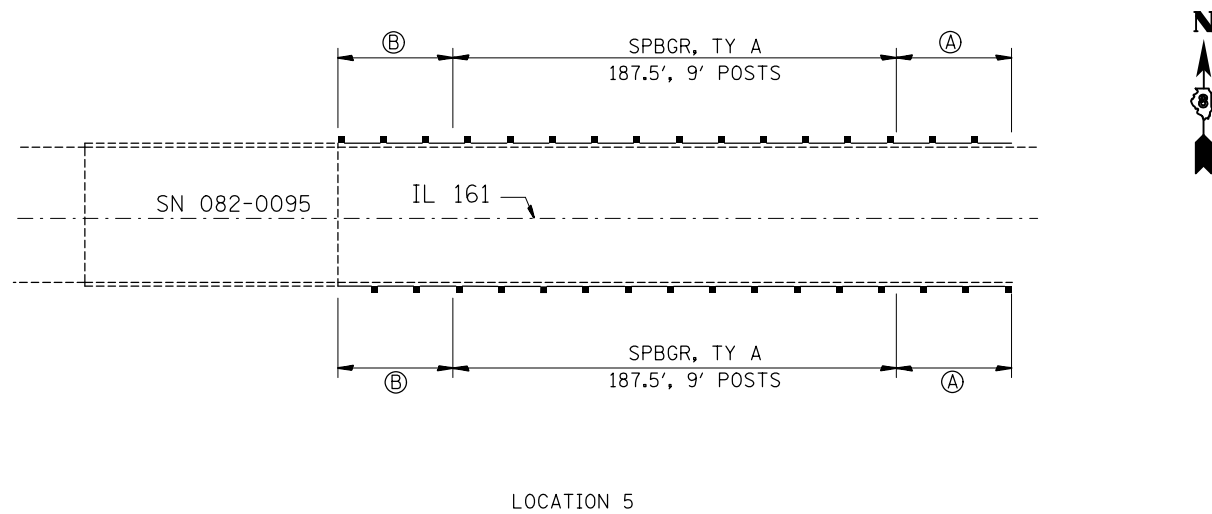
NOT TO SCALE



NOT TO SCALE



NOT TO SCALE



NOT TO SCALE

- Ⓐ = TRAFFIC BARRIER TERM. TYPE 1 SPECIAL (TANGENT)
- Ⓑ = TRAFFIC BARRIER TERM. TYPE 6
- Ⓒ = TRAFFIC BARRIER TERM. TYPE 6A

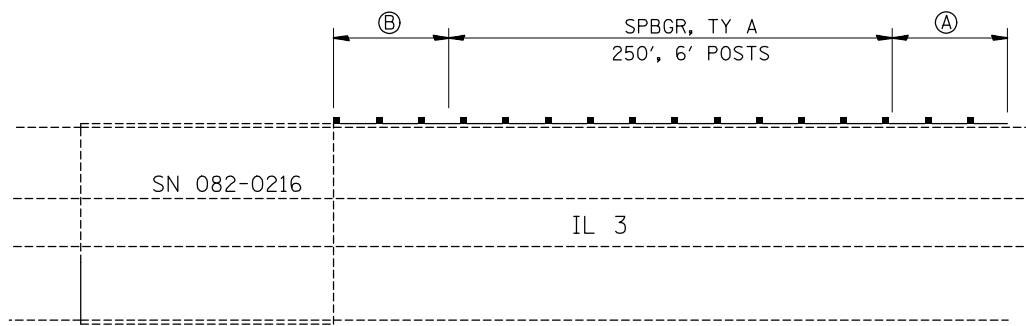
FILE NAME =	USER NAME = DintelmanJN	DESIGNED -	REVISED -
p:\IL\084EBID\INTEG\illinois.gov\PIWIDOT\Documents\IDOT Offices\District 8\Projects\0876\DRAWING\DATA\EA0\Sheets\0876J67-sht-details		DRAWN -	REVISED -
	PLOT SCALE = 100.0000' / 1in.	CHECKED -	REVISED -
	PLOT DATE = 3/7/2017	DATE -	REVISED -

**STATE OF ILLINOIS
DEPARTMENT OF TRANSPORTATION**

GUARDRAIL DETAILS

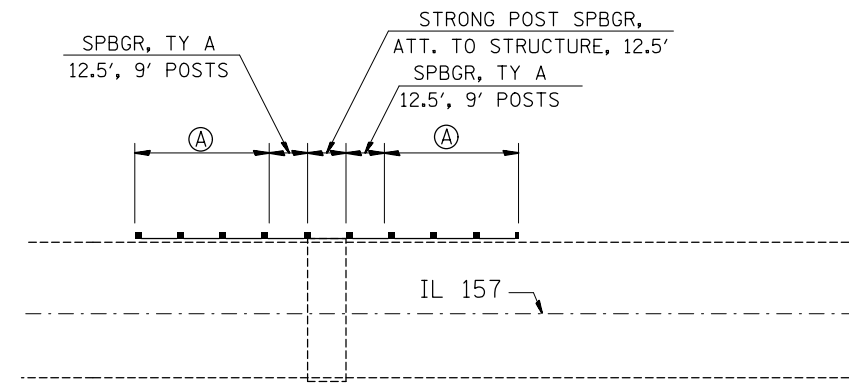
SCALE: _____ SHEET NO. ____ OF ____ SHEETS STA. _____ TO STA. _____

F.A. RTE.	SECTION	COUNTY	TOTAL SHEETS	SHEET NO.
	DIST 8 GUARDRAIL 2017-4	VARIOUS	19	10
CONTRACT NO. 76J67				
FED. ROAD DIST. NO. _ ILLINOIS FED. AID PROJECT				



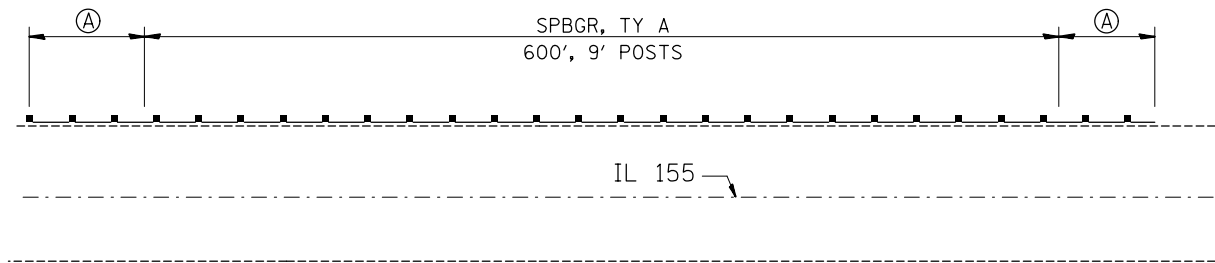
LOCATION 6

NOT TO SCALE



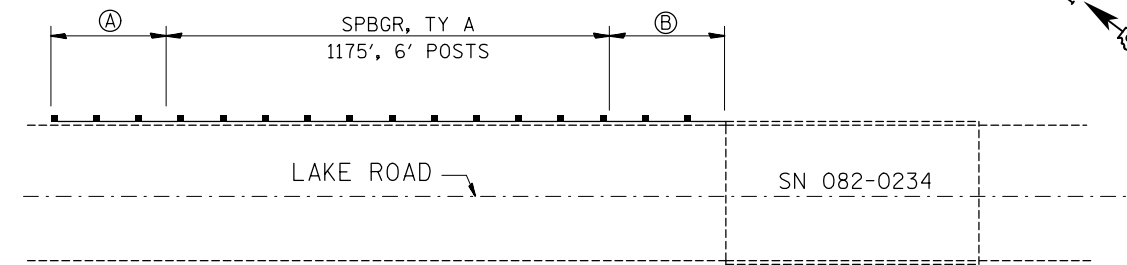
LOCATION 7

NOT TO SCALE



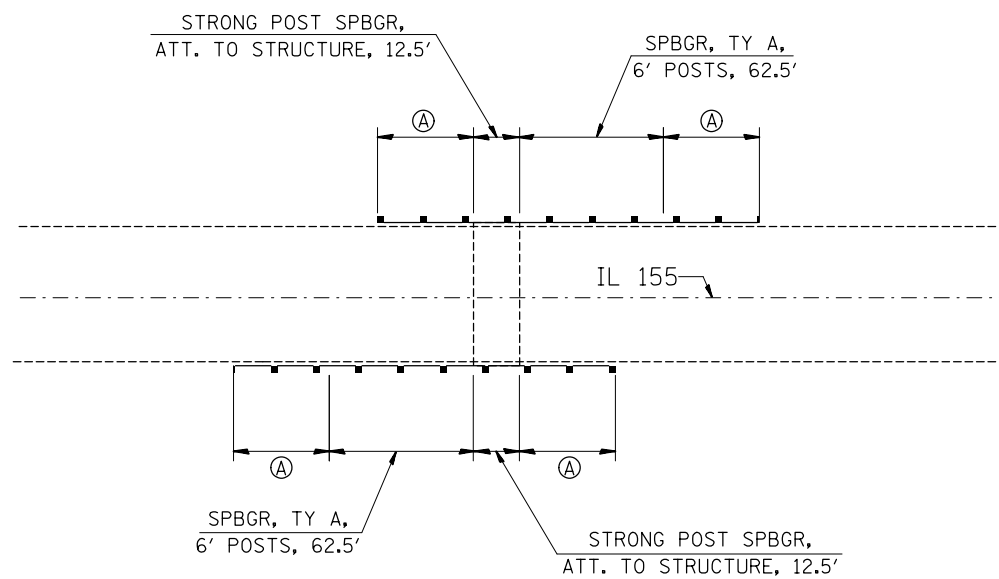
LOCATION 8

NOT TO SCALE



LOCATION 9

NOT TO SCALE



LOCATIONS 10

NOT TO SCALE

- Ⓐ = TRAFFIC BARRIER TERM. TYPE 1 SPECIAL (TANGENT)
- Ⓑ = TRAFFIC BARRIER TERM. TYPE 6
- Ⓒ = TRAFFIC BARRIER TERM. TYPE 6A

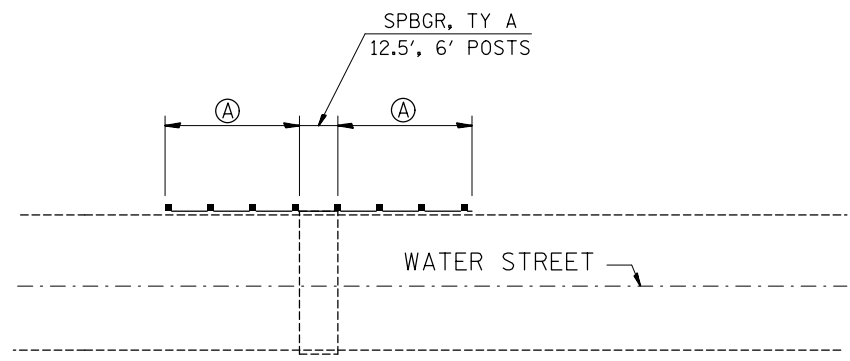
FILE NAME =	USER NAME = DintelmanJN	DESIGNED -	REVISED -
pw:\IL\084EBIDINTEG\illinois.gov\PWIDOT\Documents\IDOT Offices\District 8\Projects\0876\DRAWING\DATA\EA0\Sheets\0876J67-sht-details		DRAWN -	REVISED -
	PLOT SCALE = 100.0000' / in.	CHECKED -	REVISED -
	PLOT DATE = 3/7/2017	DATE -	REVISED -

**STATE OF ILLINOIS
DEPARTMENT OF TRANSPORTATION**

GUARDRAIL DETAILS

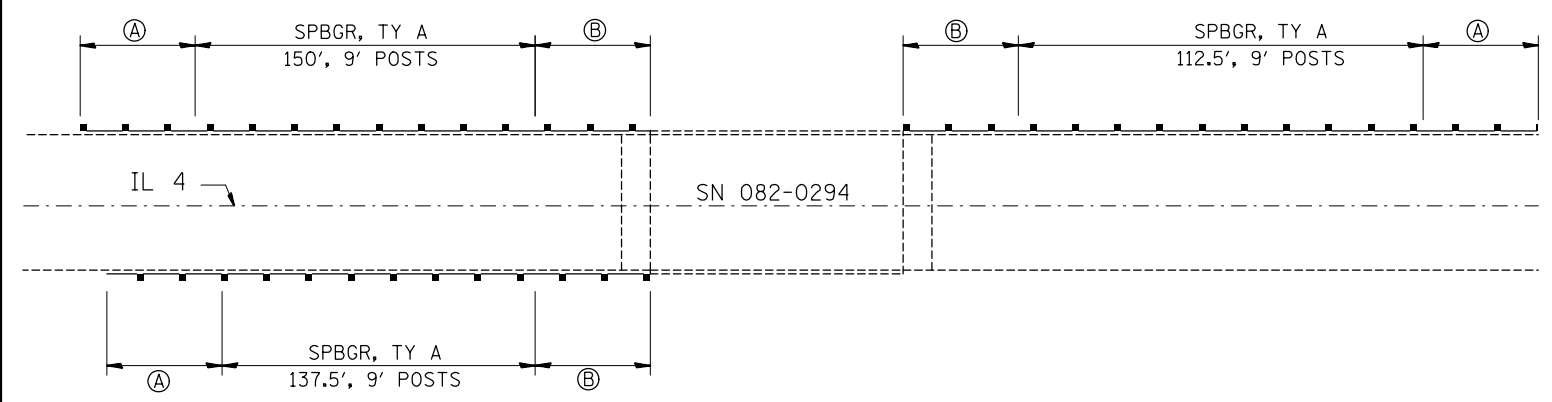
SCALE: _____ SHEET NO. ____ OF ____ SHEETS STA. _____ TO STA. _____

F.A. RTE.	SECTION	COUNTY	TOTAL SHEETS	SHEET NO.
	DIST 8 GUARDRAIL 2017-4	VARIOUS	19	11
CONTRACT NO. 76J67				
FED. ROAD DIST. NO. _ ILLINOIS FED. AID PROJECT				



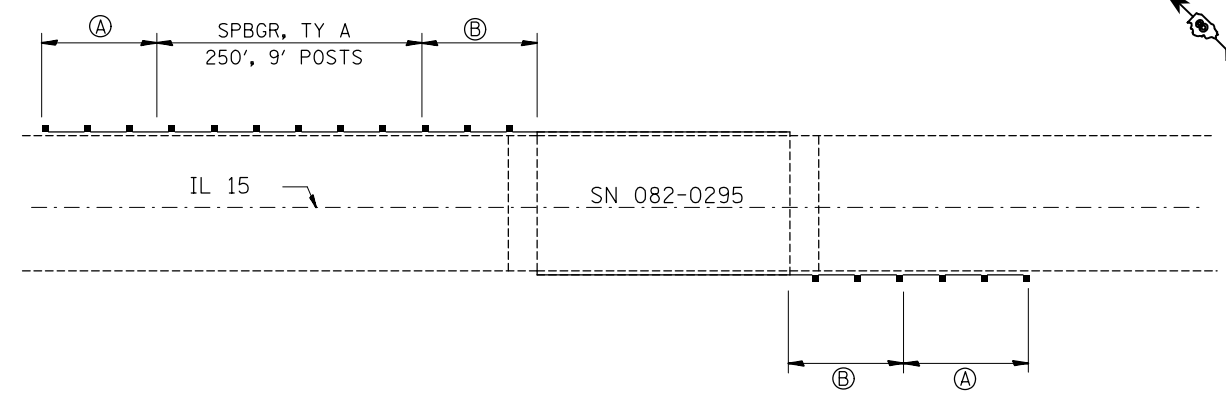
LOCATION 11

NOT TO SCALE



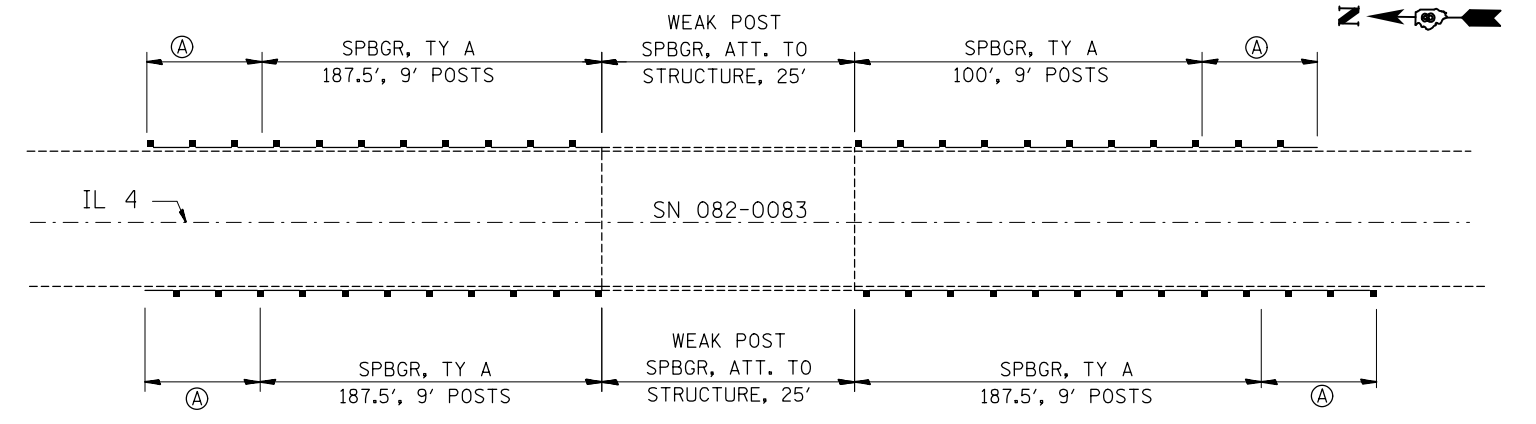
LOCATION 13

NOT TO SCALE



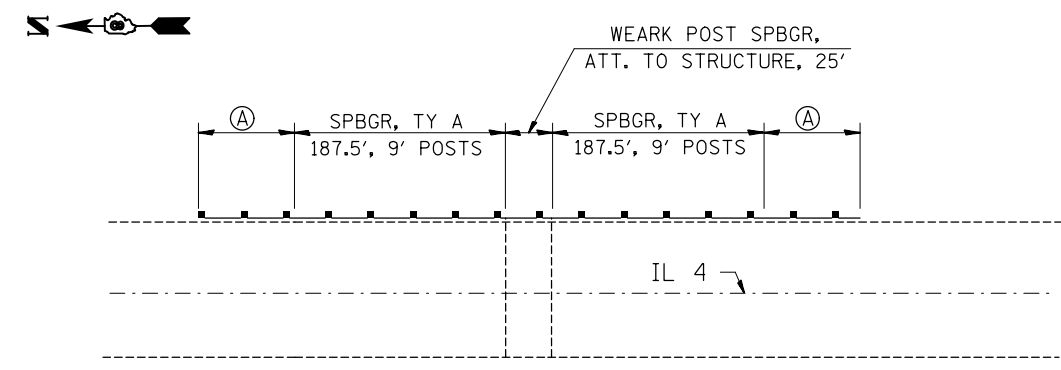
LOCATION 12

NOT TO SCALE



LOCATIONS 14

NOT TO SCALE



LOCATION 15

NOT TO SCALE

- Ⓐ = TRAFFIC BARRIER TERM. TYPE 1 SPECIAL (TANGENT)
- Ⓑ = TRAFFIC BARRIER TERM. TYPE 6
- Ⓒ = TRAFFIC BARRIER TERM. TYPE 6A

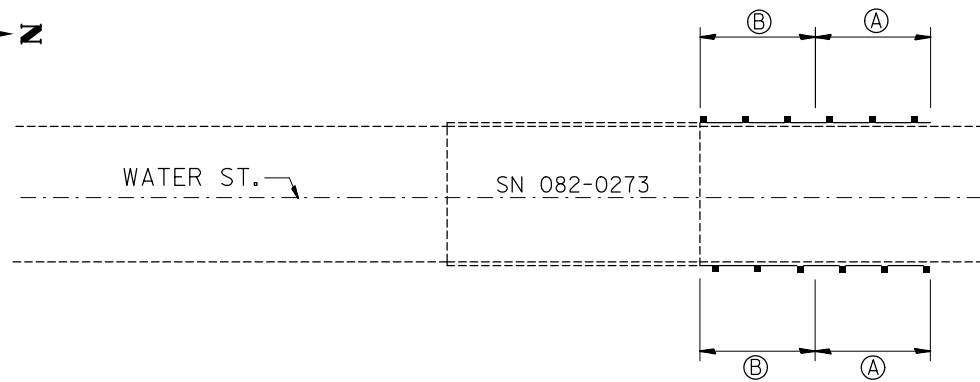
FILE NAME =	USER NAME = DintelmanJN	DESIGNED -	REVISED -
pw:\IL084EBIDINTEG.illinois.gov\PWIDOT\Documents\IDOT Offices\District 8\Projects\0876\DRAWING\DATA\EA0\Sheets\0876J67-sht-det.dwg		DRAWN -	REVISED -
	PLOT SCALE = 100.0000' / 1in.	CHECKED -	REVISED -
	PLOT DATE = 3/7/2017	DATE -	REVISED -

**STATE OF ILLINOIS
DEPARTMENT OF TRANSPORTATION**

GUARDRAIL DETAILS

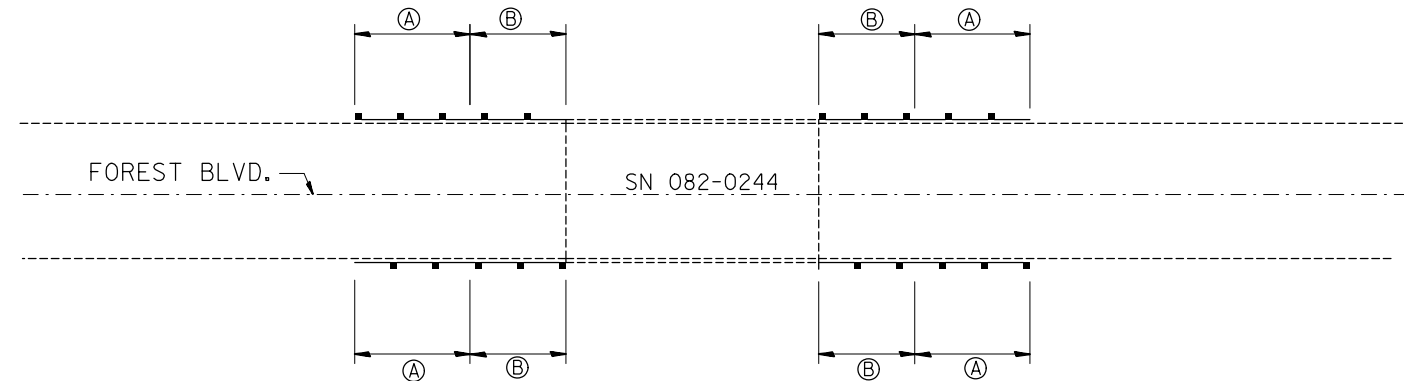
SCALE: _____ SHEET NO. ____ OF ____ SHEETS STA. _____ TO STA. _____

F.A. RTE.	SECTION	COUNTY	TOTAL SHEETS	SHEET NO.
	DIST 8 GUARDRAIL 2017-4	VARIOUS	19	12
CONTRACT NO. 76J67				
FED. ROAD DIST. NO. _ ILLINOIS FED. AID PROJECT				



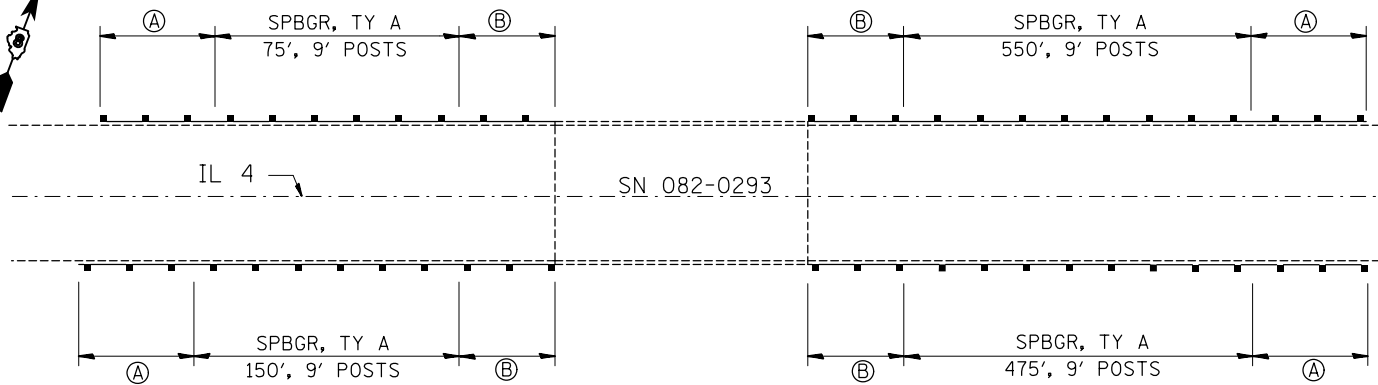
LOCATION 16

NOT TO SCALE



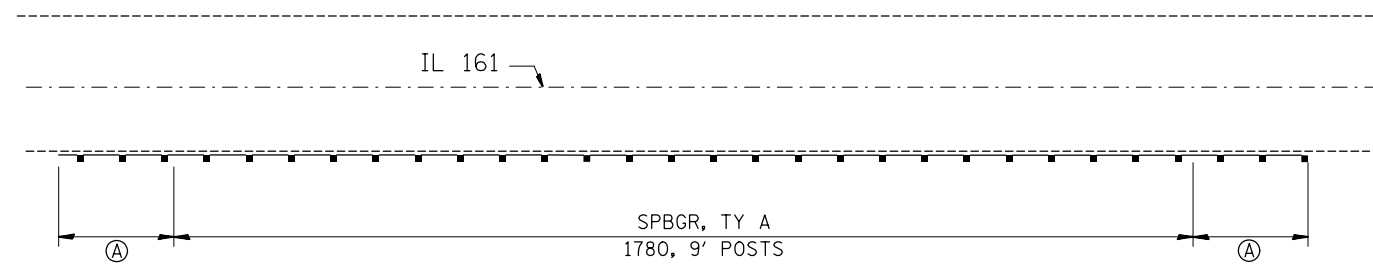
LOCATION 18

NOT TO SCALE



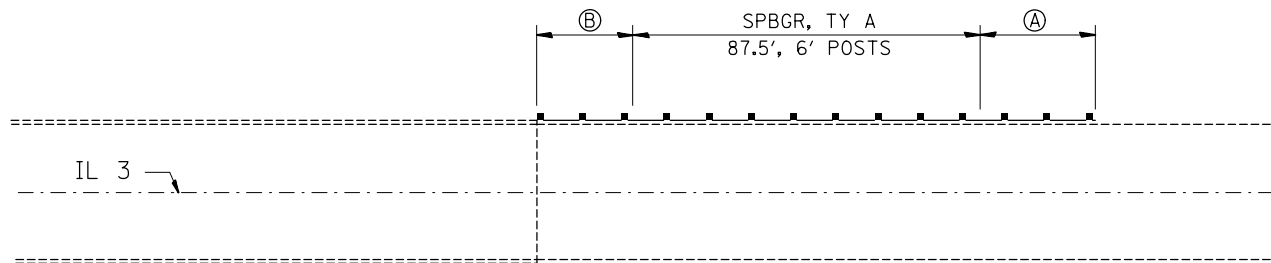
LOCATION 17

NOT TO SCALE



LOCATION 19

NOT TO SCALE



LOCATION 20

NOT TO SCALE

- Ⓐ = TRAFFIC BARRIER TERM. TYPE 1 SPECIAL (TANGENT)
- Ⓑ = TRAFFIC BARRIER TERM. TYPE 6
- Ⓒ = TRAFFIC BARRIER TERM. TYPE 6A

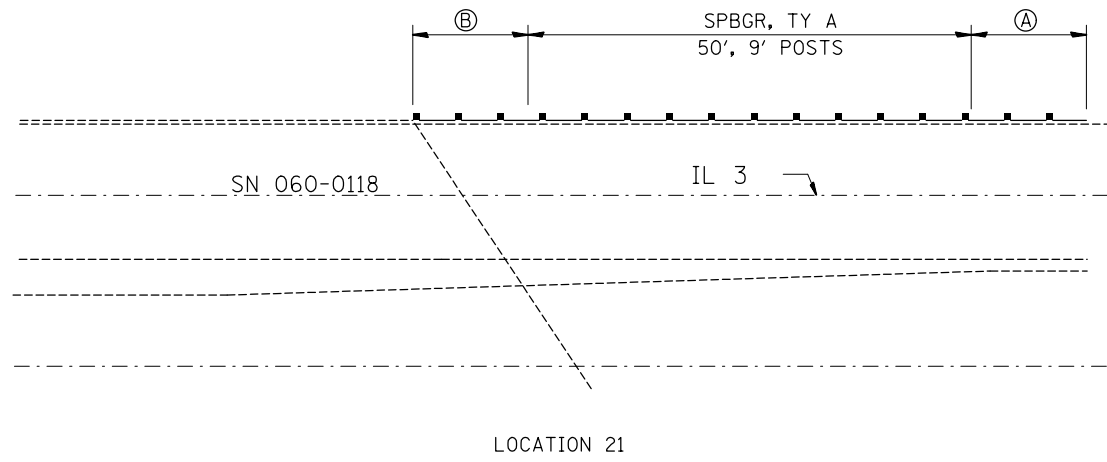
FILE NAME =	USER NAME = DintelmanJN	DESIGNED -	REVISED -
p:\11\084EBIDINTEG.illinois.gov\PIDOT\Documents\IDOT Offices\District 8\Projects\0876\DRAWING\DATA\EA0\Sheets\D876J67-sht-deta		CHECKED -	REVISED -
		DATE -	REVISED -

**STATE OF ILLINOIS
DEPARTMENT OF TRANSPORTATION**

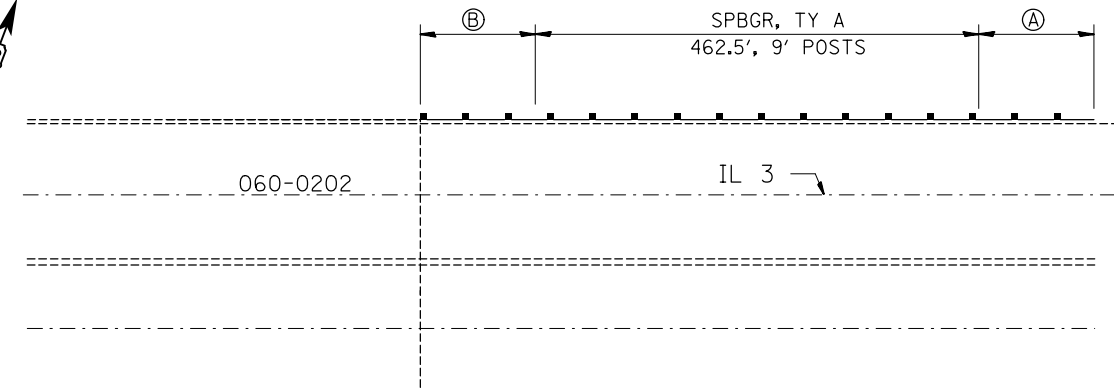
GUARDRAIL DETAILS

SCALE: _____ SHEET NO. ____ OF ____ SHEETS STA. _____ TO STA. _____

F.A. RTE.	SECTION	COUNTY	TOTAL SHEETS	SHEET NO.
	DIST 8 GUARDRAIL 2017-4	VARIOUS	19	13
CONTRACT NO. 76J67				
FED. ROAD DIST. NO. - ILLINOIS FED. AID PROJECT				

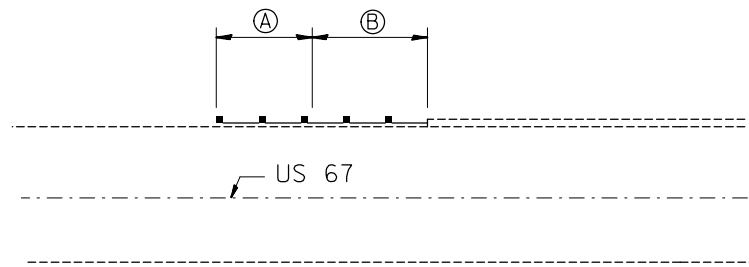
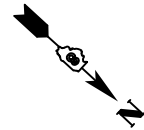


NOT TO SCALE



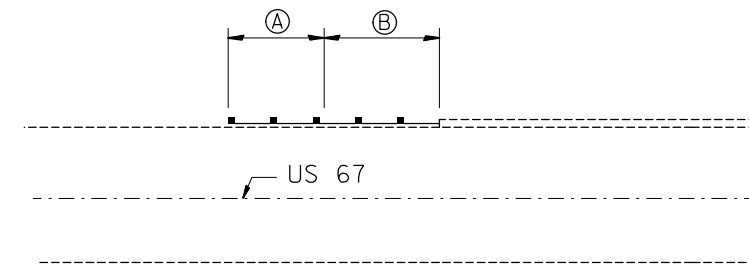
NOT TO SCALE

LOCATION 22



NOT TO SCALE

LOCATION 23



NOT TO SCALE

LOCATION 24

- Ⓐ = TRAFFIC BARRIER TERM. TYPE 1 SPECIAL (TANGENT)
- Ⓑ = TRAFFIC BARRIER TERM. TYPE 6
- Ⓒ = TRAFFIC BARRIER TERM. TYPE 6A

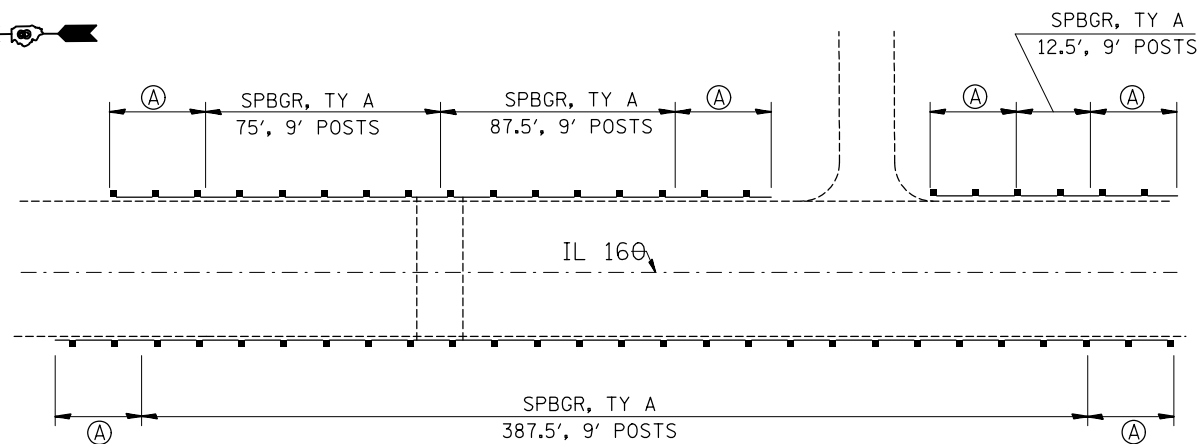
FILE NAME =	USER NAME = DintelmanJN	DESIGNED -	REVISED -
pw:\IL\084EBIDINTEG\illinois.gov\PWIDOT\Documents\IDOT Offices\District 8\Projects\0876\DRAWING\DATA\EA0\sheets\D876J67-sht-detals		CHECKED -	REVISED -
		DATE -	REVISED -

**STATE OF ILLINOIS
DEPARTMENT OF TRANSPORTATION**

GUARDRAIL DETAILS

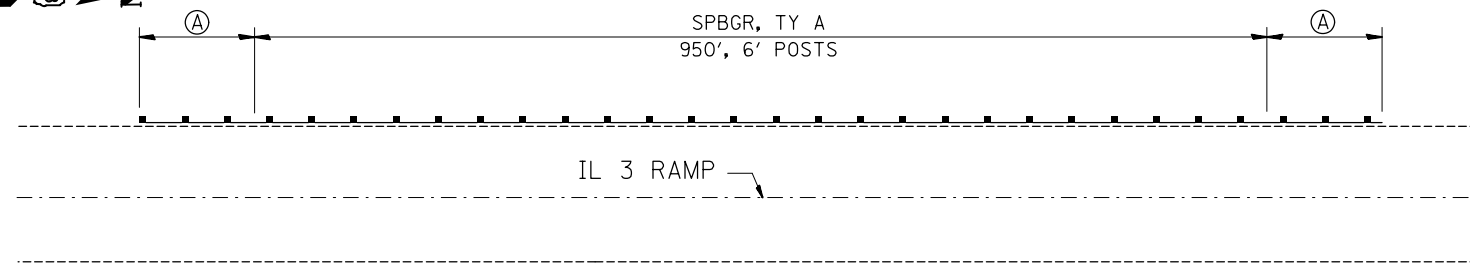
SCALE: _____ SHEET NO. ___ OF ___ SHEETS STA. _____ TO STA. _____

F.A. RTE.	SECTION	COUNTY	TOTAL SHEETS	SHEET NO.
	DIST 8 GUARDRAIL 2017-4	VARIOUS	19	14
FED. ROAD DIST. NO. _ ILLINOIS FED. AID PROJECT			CONTRACT NO. 76J67	



NOT TO SCALE

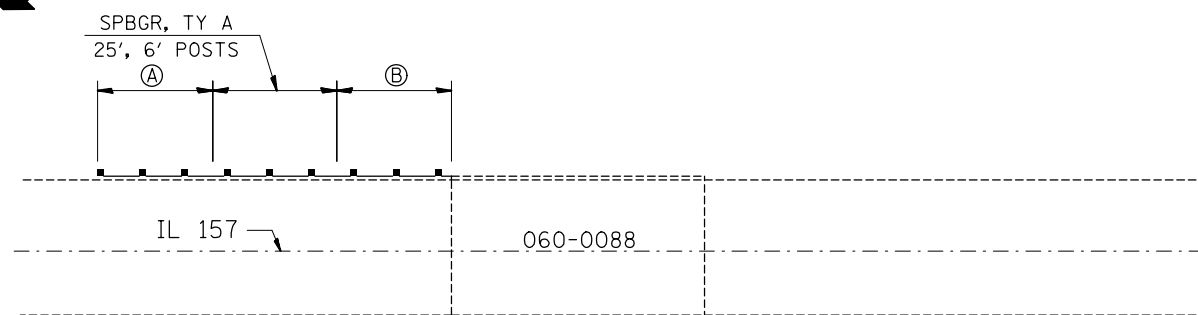
LOCATION 25



NOT TO SCALE

LOCATION 26

NOTE: THE NEW SPBGR LOCATION SHOULD MATCH THE EXISTING SPBGR LOCATION



LOCATIONS 27

NOT TO SCALE

NOT TO SCALE

- Ⓐ = TRAFFIC BARRIER TERM. TYPE 1 SPECIAL (TANGENT)
- Ⓑ = TRAFFIC BARRIER TERM. TYPE 6
- Ⓒ = TRAFFIC BARRIER TERM. TYPE 6A

FILE NAME =	USER NAME = DintelmanJN	DESIGNED -	REVISED -
p:\IL\084EBIDINTEG\illinois.gov\PWIDOT\Documents\DOT Offices\District 8\Projects\0876\DRAWING\DATA\EA0\Sheets\0876J67-sht-details		DRAWN -	REVISED -
	PLOT SCALE = 100.0000' / 1" .	CHECKED -	REVISED -
	PLOT DATE = 3/7/2017	DATE -	REVISED -

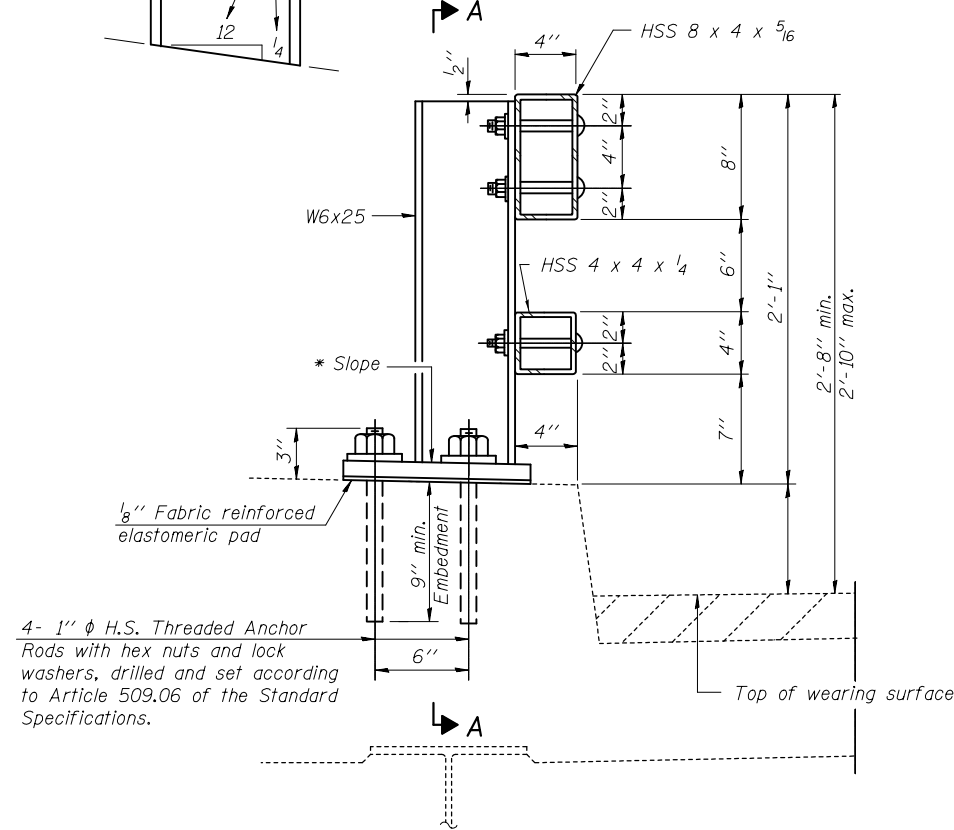
**STATE OF ILLINOIS
DEPARTMENT OF TRANSPORTATION**

GUARDRAIL DETAILS

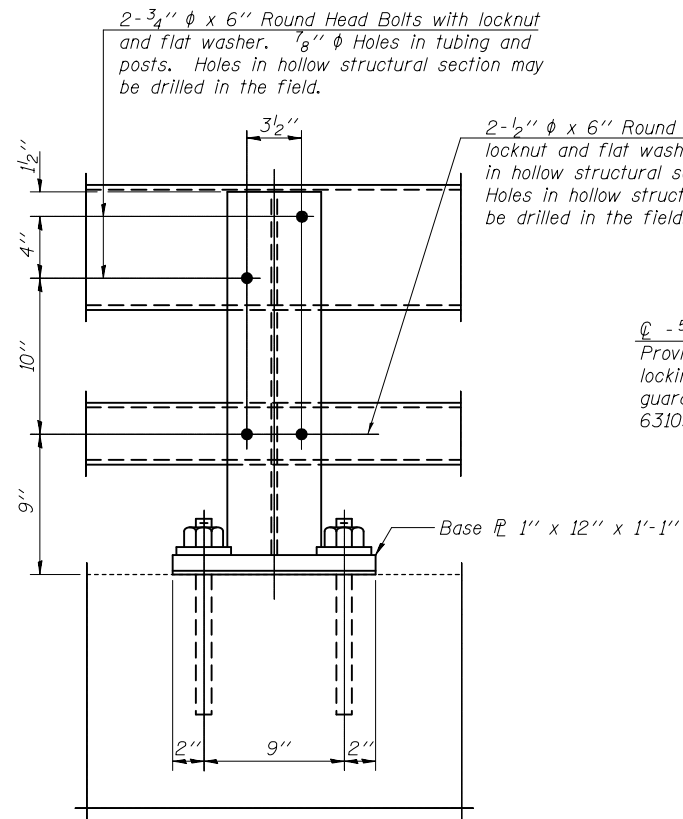
SCALE: _____ SHEET NO. ____ OF ____ SHEETS STA. _____ TO STA. _____

F.A. RTE.	SECTION	COUNTY	TOTAL SHEETS	SHEET NO.
	DIST 8 GUARDRAIL 2017-4	VARIOUS	19	15
CONTRACT NO. 76J67			FED. ROAD DIST. NO. _ [ILLINOIS] FED. AID PROJECT	

* Cut bottom end of post to curb slope.



SECTION AT RAIL POST

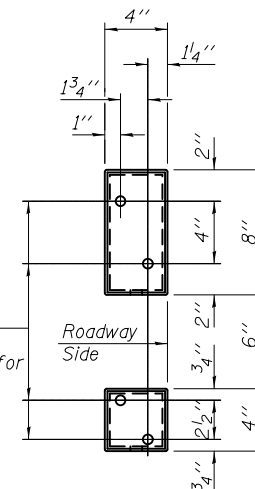


SECTION A-A

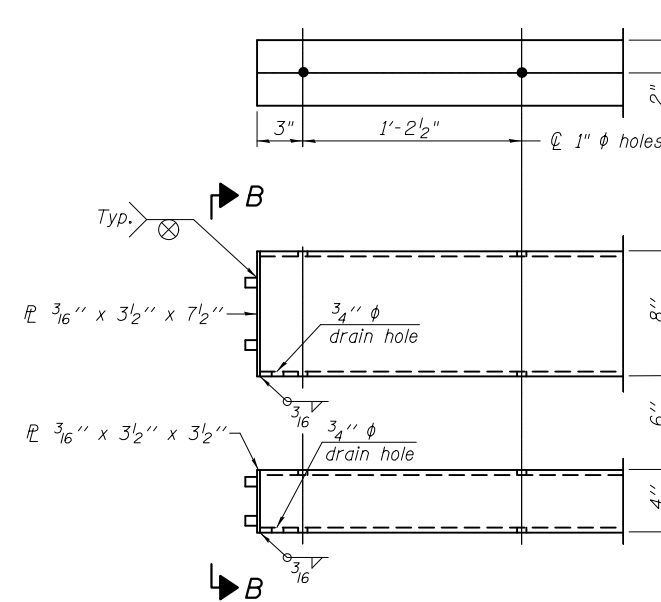
2- $\frac{3}{4}$ " ϕ x 6" Round Head Bolts with locknut and flat washer. $\frac{1}{8}$ " ϕ Holes in tubing and posts. Holes in hollow structural section may be drilled in the field.

2- $\frac{1}{2}$ " ϕ x 6" Round Head Bolts with locknut and flat washer. $\frac{5}{8}$ " ϕ Holes in hollow structural section and post. Holes in hollow structural section may be drilled in the field.

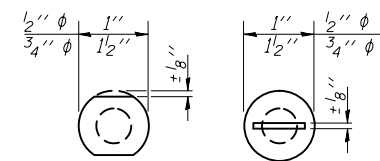
ϕ - $\frac{5}{8}$ " reduced base welded studs. Provide 4 - $\frac{5}{8}$ " washers and self-locking nuts or nuts and jam nuts for guardrail connection shown on Std. 631032.



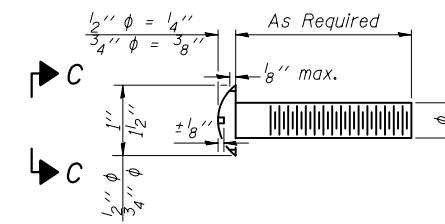
VIEW B-B



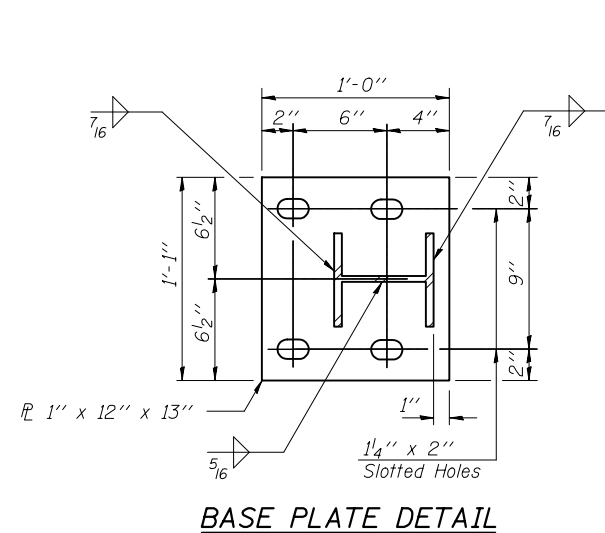
END OF RAIL DETAILS



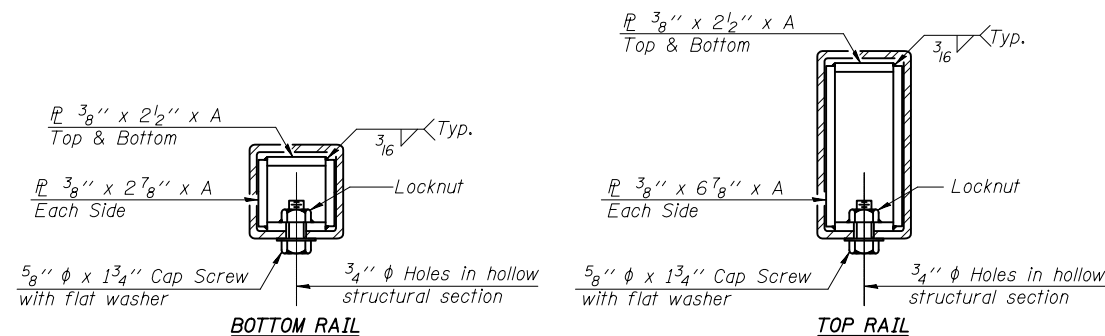
VIEW C-C



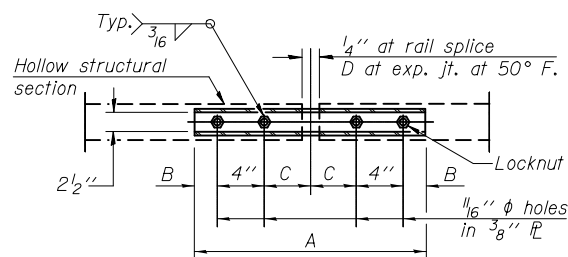
DETAIL OF $\frac{1}{2}$ " ϕ & $\frac{3}{4}$ " ϕ ROUND HEAD BOLTS



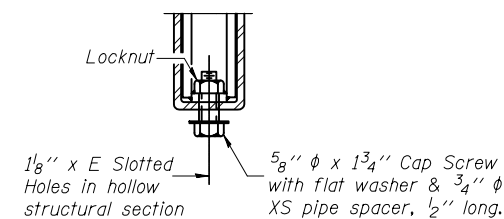
BASE PLATE DETAIL



SECTIONS AT RAIL SPLICE



PLAN-BOTT. SPLICE TYPICAL



RAIL SPLICE CONNECTION AT EXPANSION JT.

Notes:
 Posts shall not be located closer than 1'-3" to an existing bridge expansion joint or end of bridge.
 Steel Bridge Rail expansion joint shall be provided between any two (2) posts which span a bridge expansion joint. Bolts located at expansion joint shall be provided with locknuts and shall be tightened only to a point that will allow railing movement.
 Provide one 1/8" and two 1/16" steel shims for 25% of the posts. Shims shall be similar to base plates in size and holes.
 All steel rail elements shall be galvanized according to Article 509.05 of the Standard Specifications.

SPLICE DIMENSIONS

T	D	A	B	C	E
≤4"	2 1/2"	1'-8"	2"	4"	2 1/2"
>4" ≤6 1/2"	3 3/4"	2'-0"	2 1/2"	5 1/2"	3 1/2"
>6 1/2" ≤9"	5"	2'-4"	3 1/2"	6 1/2"	9"
>9" ≤13"	7"	2'-10"	4 1/2"	8 1/2"	11"
Rail Splice	1/4"	1'-8"	2"	4"	—

T = Total movement at expansion joint as shown on the design plans.

BILL OF MATERIAL

Item	Unit	Quantity
Steel Railing, Type 2399	Foot	556

R-31

1-12-15

(6'-3" Maximum Post Spacing)

FILE NAME =	USER NAME = DintelmanJN	DESIGNED -	REVISED -
pw:\11084EBIDINTEG\illinois.gov\PIWIDOT\Documents\DOT Offices\District 8\Projects\0876\DRAWING\0876\0876-0022-0027\0876-0022-0027-0001.dwg			
PLOT SCALE = 100.0000' / 1in.	CHECKED -	REVISED -	
PLOT DATE = 2/3/2017	DATE -	REVISED -	

**STATE OF ILLINOIS
 DEPARTMENT OF TRANSPORTATION**

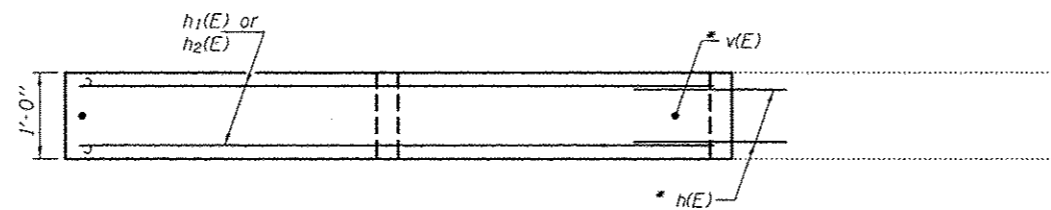
**STEEL RAILING, TYPE 2399
 STRUCTURE NOS. 082-0022, 082-0027**

SCALE: SHEET NO. OF SHEETS STA. TO STA.

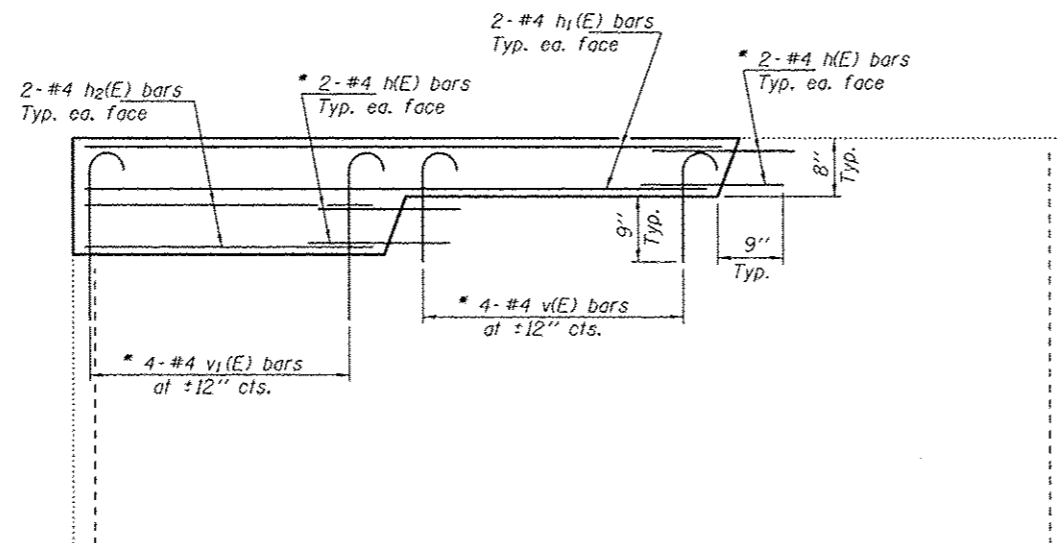
F.A. RTE.	SECTION	COUNTY	TOTAL SHEETS	SHEET NO.
	DIST 8 GUARDRAIL 2017-3	VARIOUS	19	16
CONTRACT NO. 76J67				
FED. ROAD DIST. NO. ILLINOIS FED. AID PROJECT				

NOTES

Reinforcement bars designated (E) shall be epoxy coated.
 Plan dimensions and details relative to existing plans are subject to nominal construction variations. The Contractor shall field verify existing dimensions and details affecting new construction and make necessary approved adjustments prior to construction or ordering of materials. Such variations shall not be cause for additional compensation for a change in scope of the work, however, the Contractor will be paid for the quantity actually furnished at the unit price bid for the work.

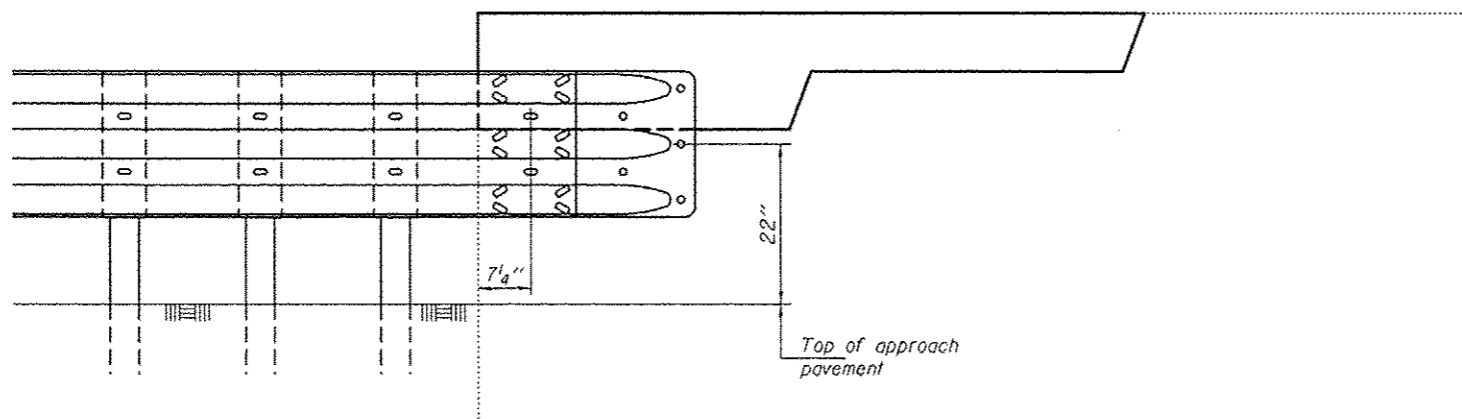


SECTION

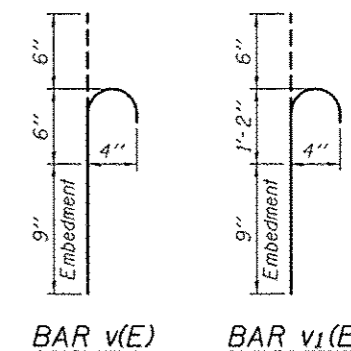


PROPOSED ELEVATION

* Epoxy grout h(E), v(E) & v₁(E) bars in 9" min. holes according to Article 584 of the Standard Specifications. Cost included with Reinforcement Bars, Epoxy Coated.



GUARDRAIL LOCATION



**BILL OF MATERIAL
4 WINGWALLS**

Bar	No.	Size	Length	Shape
h(E)	32	#4	1'-9"	—
h ₁ (E)	16	#4	7'-1"	—
h ₂ (E)	16	#4	3'-3"	—
v(E)	16	#4	1'-3"	U
v ₁ (E)	16	#4	2'-5"	U
Concrete Structures			Cu. Yd.	1.1
Reinforcement Bars, Epoxy Coated			Pound	190



EXPIRES 11-30-2018

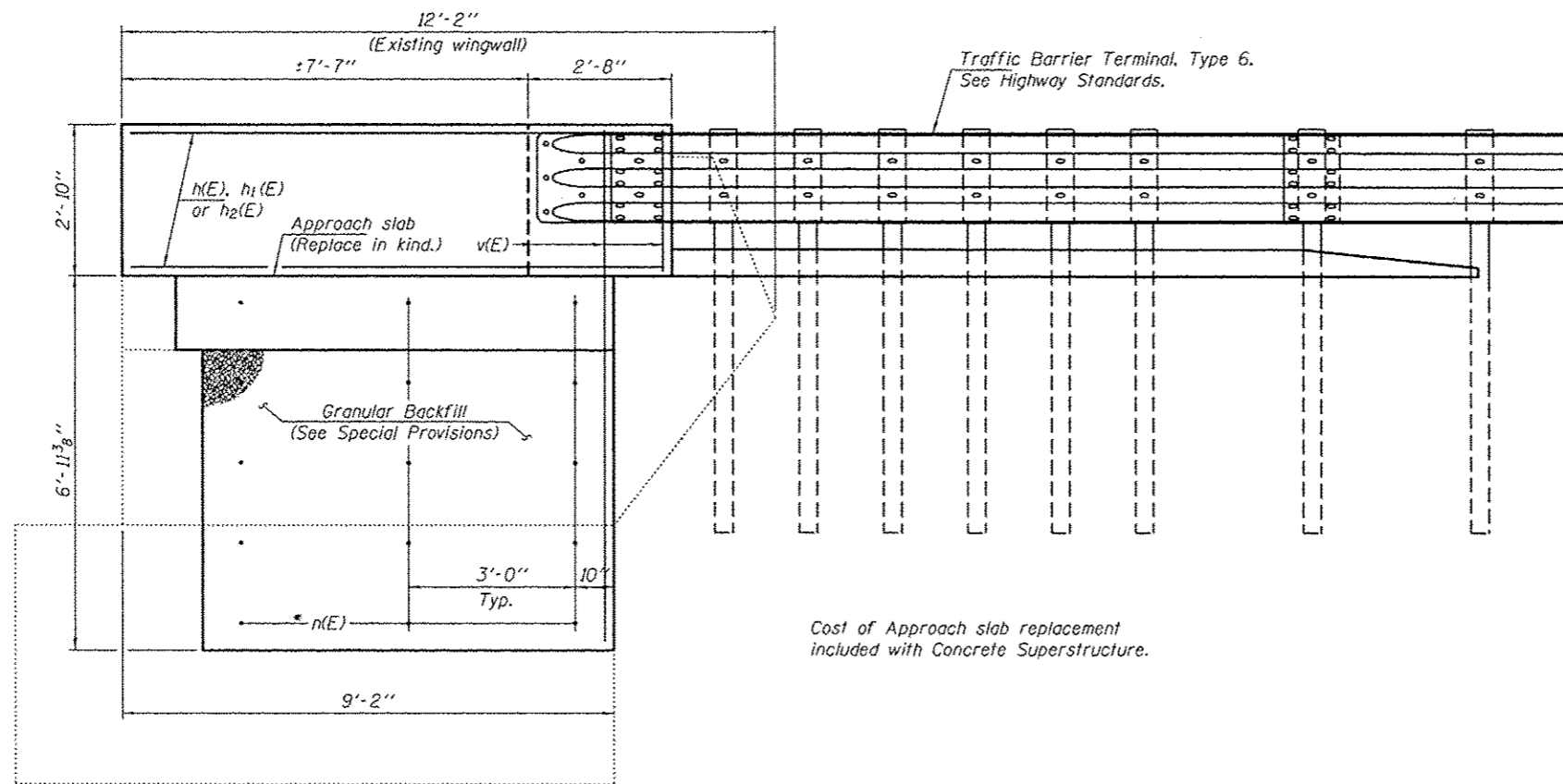
DESIGNED	<i>[Signature]</i>	DATE -	MARCH 16, 2017
CHECKED	<i>[Signature]</i>	REVISED	
DRAWN	<i>[Signature]</i>	REVISED	
CHECKED	<i>[Signature]</i>	REVISED	

STATE OF ILLINOIS
DEPARTMENT OF TRANSPORTATION

SE WINGWALL MODIFICATION
TR 138 OVER FAI 70
SN 018-0017

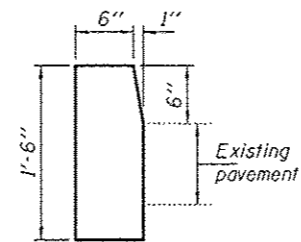
SHEET NO. 1 OF 1 SHEETS

F.A.I. RTE.	SECTION	COUNTY	TOTAL SHEETS	SHEET NO.
70	DIST 8 GUARDRAIL 2017-4	CUMBERLAND	19	17
			CONTRACT NO. 76J67	
ILLINOIS FED. AID PROJECT				

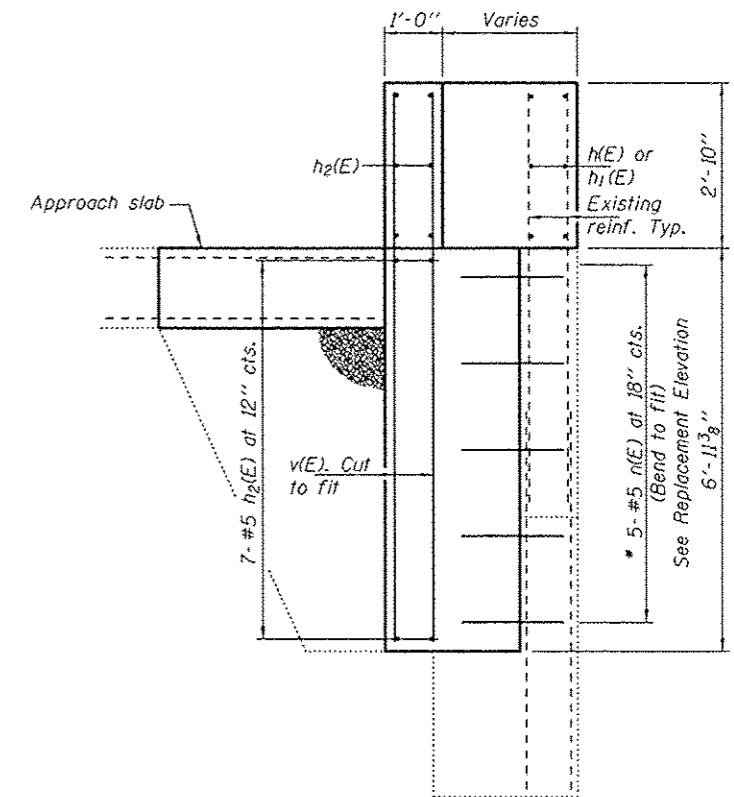


REPLACEMENT ELEVATION

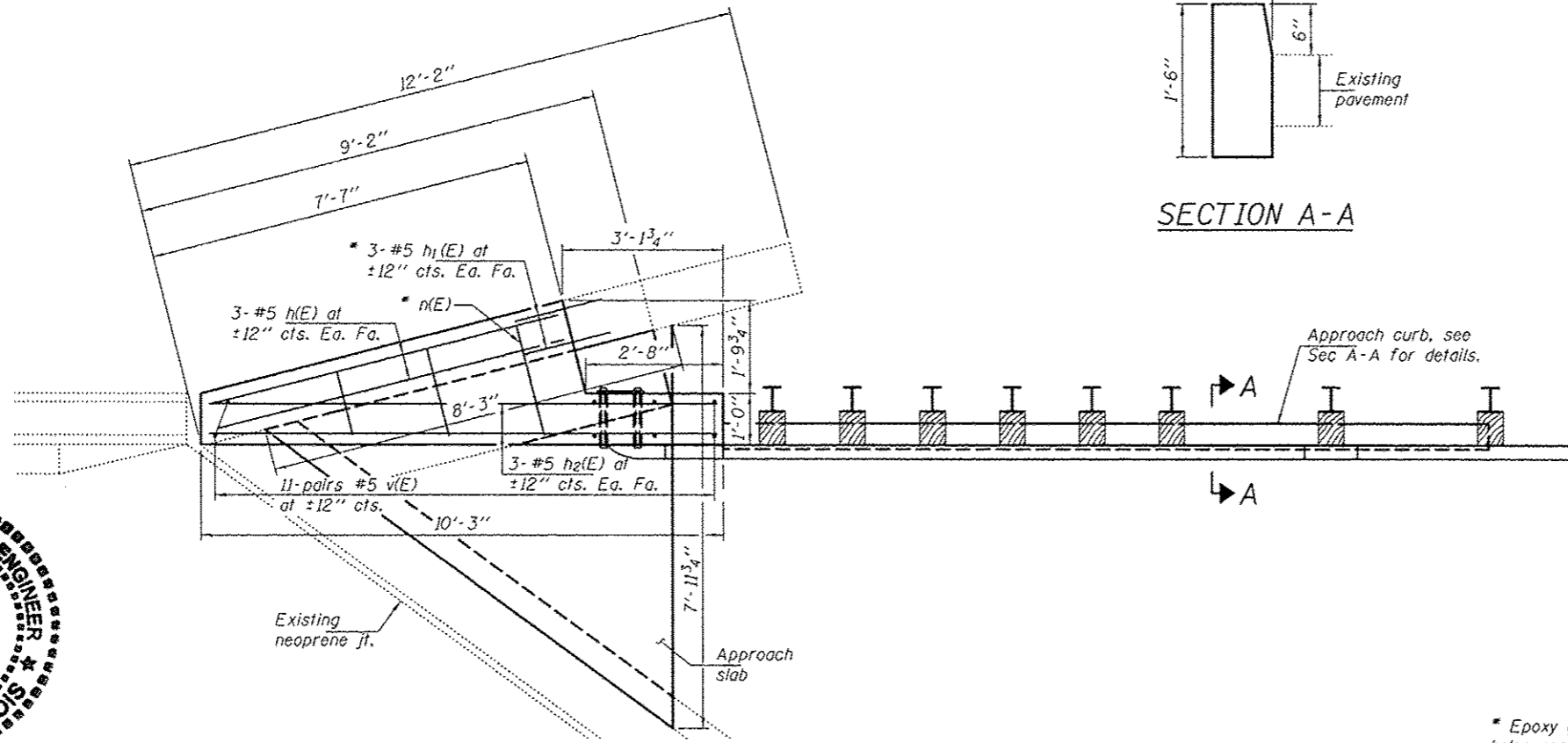
Cost of Approach slab replacement included with Concrete Superstructure.



SECTION A-A



SECTION THRU WING



REPLACEMENT PLAN



EXPIRES 11-30-2018

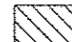

* Epoxy grout n(E) & h1(E) bars in 9" min. holes according to Article 584 of the Standard Specifications.

GENERAL NOTES

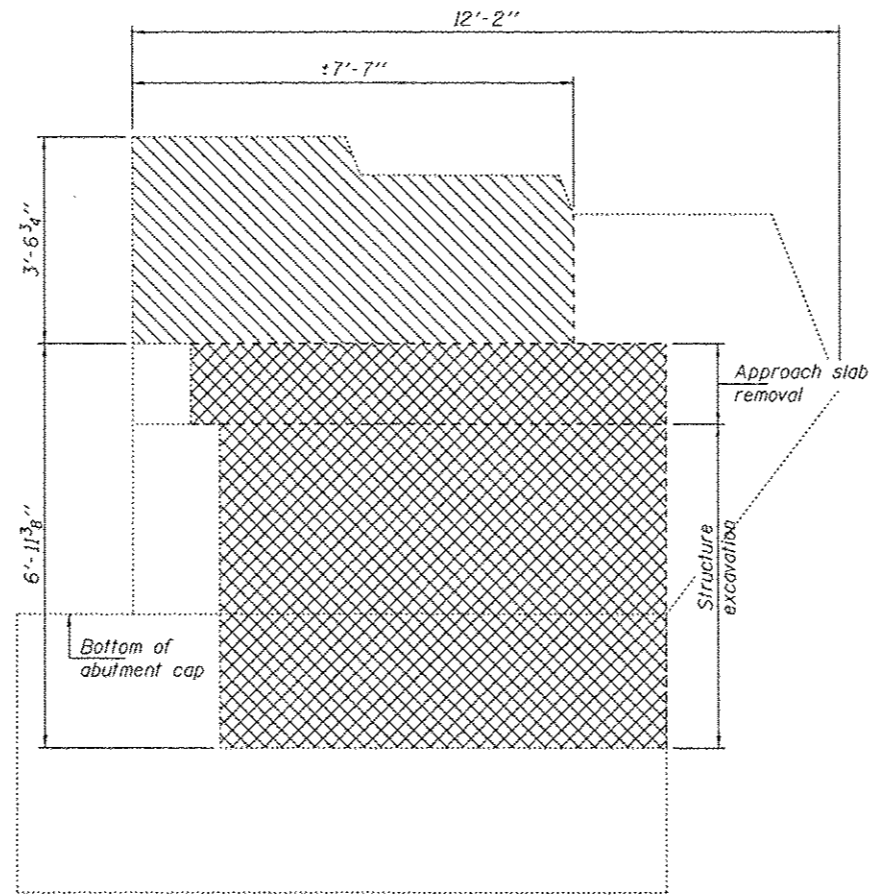
Reinforcement bars designated (E) shall be epoxy coated. Plan dimensions and details relative to existing plans are subject to nominal construction variations. The Contractor shall field verify existing dimensions and details affecting new construction and make necessary approved adjustments prior to construction or ordering of materials. Such variations shall not be cause for additional compensation for a change in scope of the work, however, the Contractor will be paid for the quantity actually furnished at the unit price bid for the work. Existing reinforcement bars extending into the removal area shall be cleaned, straightened and incorporated into the new construction. Any reinforcement bars that are damaged during concrete removal shall be replaced with an approved bar splicer or anchorage system. Cost included with Concrete Removal.

BILL OF MATERIAL

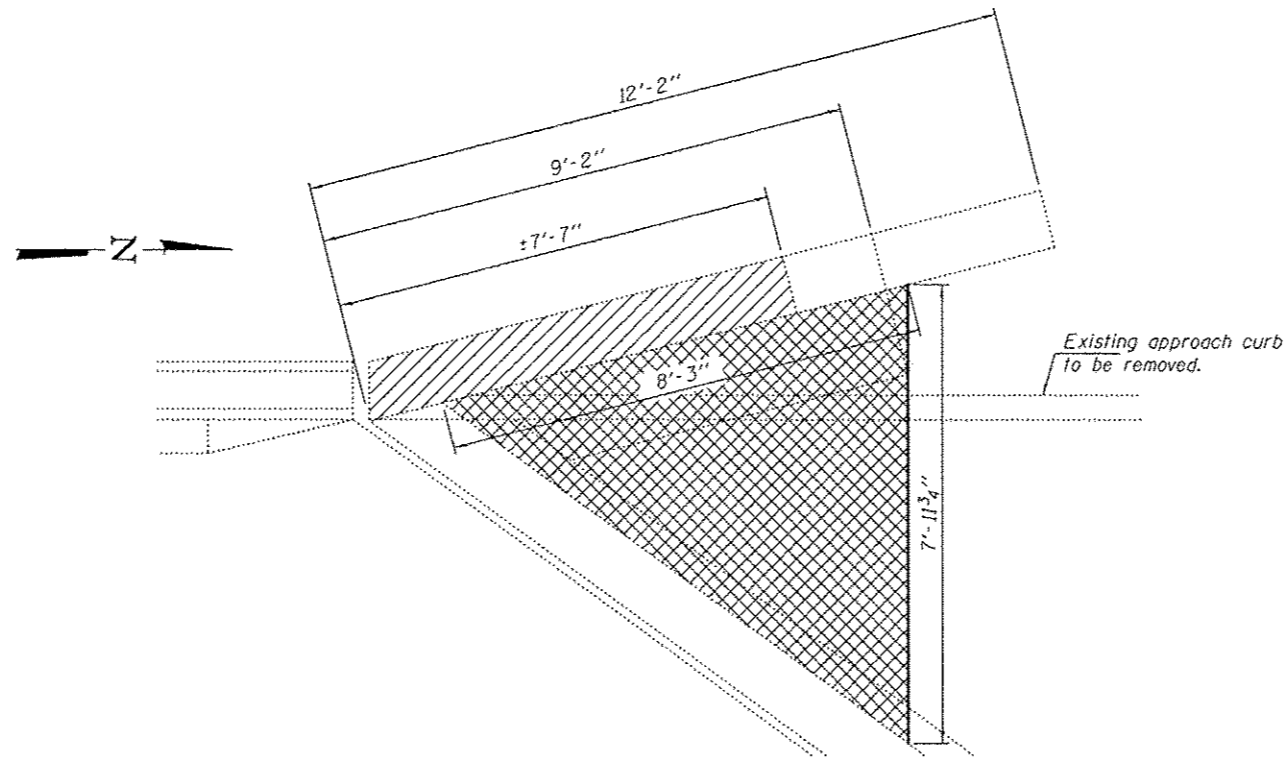
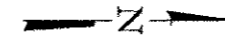
Bar	No.	Size	Length	Shape
h(E)	6	#5	7'-0"	—
h1(E)	6	#5	1'-9"	—
h2(E)	20	#5	9'-10"	—
n(E)	15	#5	2'-2"	—
v(E)	22	#5	9'-5"	—
Concrete Superstructure			Cu. Yd.	5.7
Concrete Removal			Cu. Yd.	2.7
Reinforcement Bars, Epoxy Coated			Pound	520
Structure Excavation			Cu. Yd.	6.9
Granular Backfill			Cu. Yd.	6.9

-  - Concrete removal.
-  - Approach slab removal & Structure excavation.

Cost of Approach slab removal included with Concrete Removal.



REMOVAL ELEVATION



REMOVAL PLAN

DESIGNED	CCC
CHECKED	JGY
DRAWN	baliva
CHECKED	CCC JGY

PASSED

Carl Perry
ENGINEER OF BRIDGES AND STRUCTURES

DATE - MARCH 16, 2017

REVISED
REVISED

STATE OF ILLINOIS
DEPARTMENT OF TRANSPORTATION

NORTH ABUTMENT WINGWALL C REMOVAL DETAILS
SN 082-0206

SHEET NO. 2 OF 2 SHEETS

F.A.I. RTE.	SECTION	COUNTY	TOTAL SHEETS	SHEET NO.
55/64	DIST 8 GUARDRAIL 2017-4	ST. CLAIR	19	19
ILLINOIS FED. AID PROJECT			CONTRACT NO. 76J67	