

STATE OF ILLINOIS
DEPARTMENT OF TRANSPORTATION

F.A.P. R.T.E.	SECTION	COUNTY	TOTAL SHEETS	SHEET NO.
805	124,125-1-1	ST. CLAIR	10	1
		ILLINOIS	CONTRACT NO. 76J87	

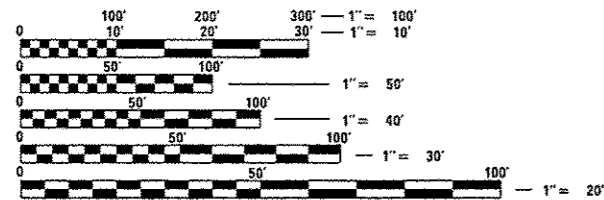
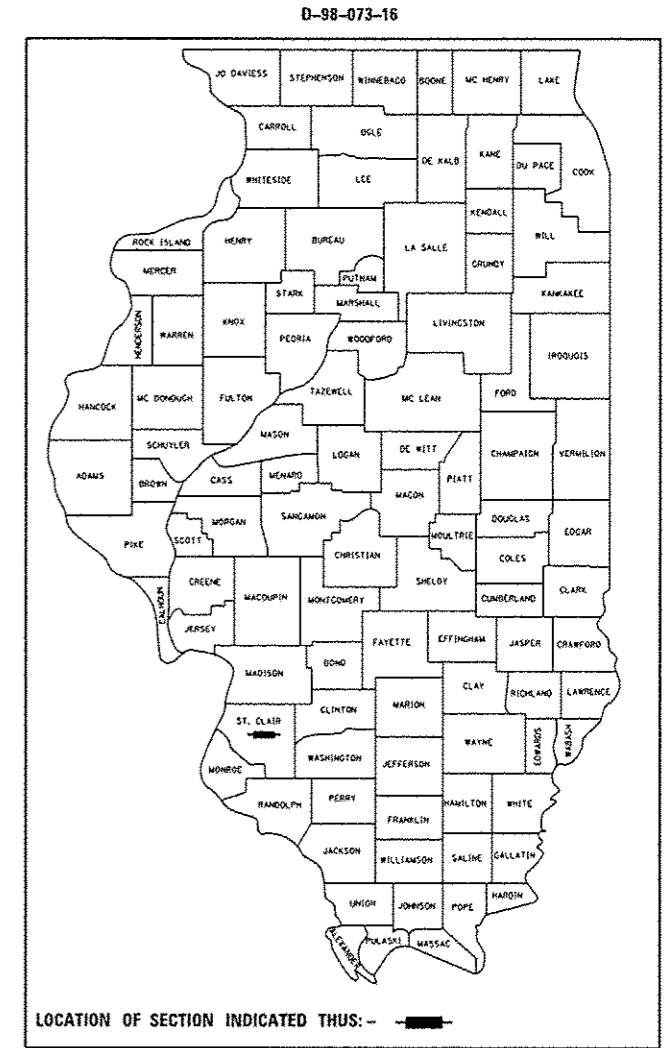
FOR INDEX OF SHEETS, SEE SHEET NO. 2

2015 ADT 13400 (ACTUAL)
2017 ADT 13600 (EST)
2036 ADT 16000 (EST)
SU = 2.2%
MU = 0.6%

PROPOSED HIGHWAY PLANS

FAP ROUTE 805 (IL 161/L 158)
SECTION 124, 125-1-1
PROJECT HSIP-0805(078)
CENTERLINE RESURFACING AND
RUMBLESTRIP
ST. CLAIR COUNTY

C-98-066-16

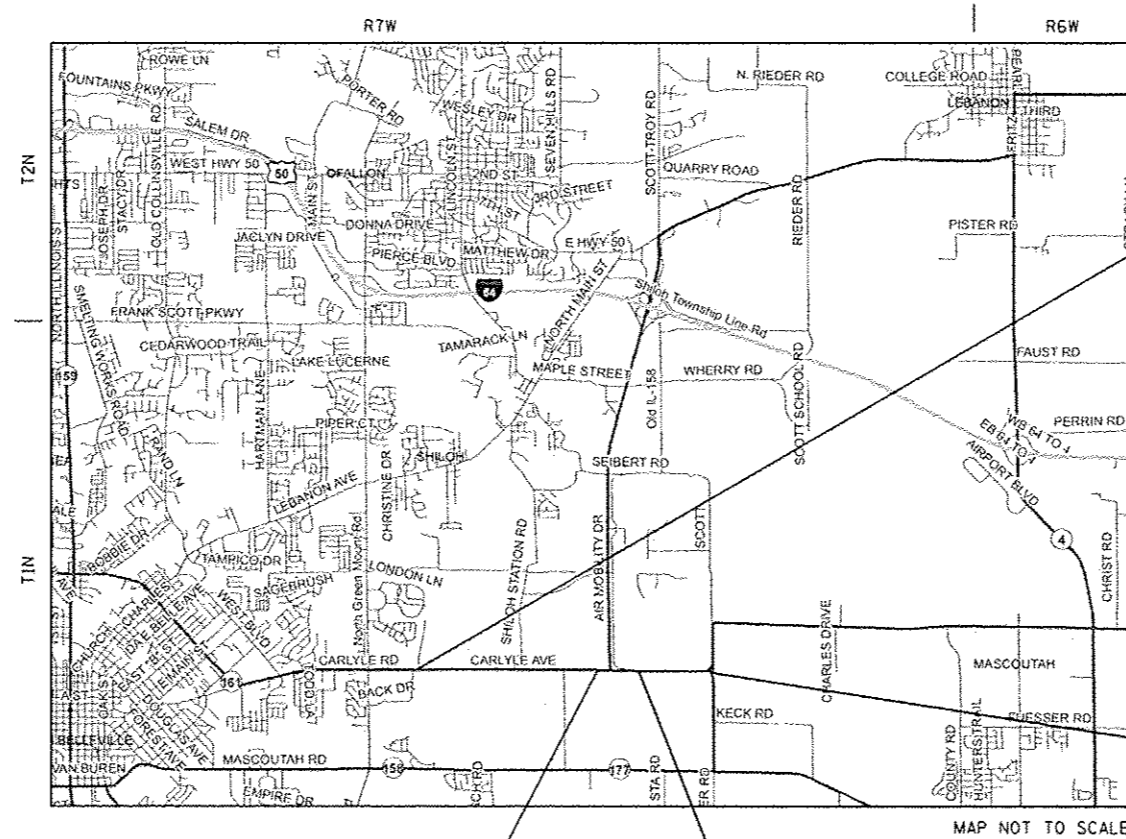


FULL SIZE PLANS HAVE BEEN PREPARED USING STANDARD ENGINEERING SCALES. REDUCED SIZED PLANS WILL NOT CONFORM TO STANDARD SCALES. IN MAKING MEASUREMENTS ON REDUCED PLANS, THE ABOVE SCALES MAY BE USED.

J.U.L.I.E.
JOINT UTILITY LOCATION INFORMATION FOR EXCAVATION
1-800-892-0123
OR 811

PROJECT ENGINEER: HERVE GELIN (618) 346-3179
SQUAD LEADER: BILLIE OWEN (618) 346-3209

CONTRACT NO. 76J87



BEGIN PROJECT
STA. 149+50.00
LAT: 38.51952
LONG: -89.91924

END PROJECT
STA. 290+00.00
LAT: 38.51916
LONG: -89.86426

BEGIN OMISSION
STA. 236+00.00

END OMISSION
STA. 257+20.00

MAP NOT TO SCALE

GROSS LENGTH = 14,050 FT. = 2.66 MILE
NET LENGTH = 11,930 FT. = 2.26 MILE

STATE OF ILLINOIS
DEPARTMENT OF TRANSPORTATION

SUBMITTED Jan 25 20 17
Jeffrey L. K...
REGIONAL ENGINEER

Mar 24 20 17
Maureen M. Addis P.E.
ENGINEER OF DESIGN AND ENVIRONMENT

Mar 24 20 17
[Signature]
DIRECTOR OF PROGRAM DEVELOPMENT

PRINTED BY THE AUTHORITY
OF THE STATE OF ILLINOIS

INDEX OF SHEETS

1. COVER SHEET
2. INDEX OF SHEETS, HIGHWAY STANDARDS, GENERAL NOTES AND COMMITMENTS
3. SUMMARY OF QUANTITIES
4. TYPICAL SECTIONS
5. SCHEDULES
6. PROJECT LOCATION MAP & TIE POINT
7. CENTERLINE RUMBLE STRIP DETAIL
- 8-10. SHILOH STATION ROAD DETAIL

HIGHWAY STANDARDS

- | | |
|-----------|---|
| 000001-06 | STANDARD SYMBOLS, ABBREVIATIONS AND PATTERNS |
| 001006 | DECIMAL OF AN INCH AND A FOOT |
| 701602-08 | URBAN LANE CLOSURE, MULTILANE, 2W WITH BIDIRECTIONAL LEFT TURN LANE |
| 701901-06 | TRAFFIC CONTROL DEVICES |

GENERAL NOTES

1. THE CONTRACTOR SHALL BE AWARE THAT NO FORMAL SURVEY WAS PERFORMED FOR THIS PROJECT. THE STATIONING AND TOPO SHOWN IN THE PLANS WAS CREATED USING MICROFILM AND FIELD MEASUREMENTS MADE BY DESIGN PERSONNEL. BOTH SHALL BE ASSUMED TO BE APPROXIMATE.
2. THE CONTRACTOR SHALL VERIFY ALL DIMENSIONS AND CONDITIONS IN THE FIELD PRIOR TO CONSTRUCTION AND ORDERING OF MATERIALS.
3. ILLINOIS STATE LAW REQUIRES A 48-HOUR NOTICE BE GIVEN TO ALL UTILITIES WITHIN THE PROJECT AREA BEFORE DIGGING. FIELD MARKING OF FACILITIES MAY BE OBTAINED BY CONTACTING J.U.L.I.E OR FOR NON-MEMBERS, THE UTILITY COMPANY DIRECTLY. AGENCIES KNOWN TO HAVE FACILITIES WITHIN THE PROJECT AREA ARE AS FOLLOWS:
 - AMEREN ILLINOIS - GAS AND ELECTRIC (AERIAL & BURIED)
 - AT&T ILLINOIS - COMMUNICATIONS (AERIAL & BURIED)
 - CITY OF BELLEVILLE - SANITARY SEWER (BURIED)
 - CENTURYLINK, INC. - COMMUNICATIONS (AERIAL & BURIED)
 - CHARTER COMMUNICATIONS, INC. - CABLE TV (AERIAL & BURIED)
 - ILLINOIS AMERICAN WATER COMPANY - WATER (BURIED)
 - MASCOUTAH COMMUNITY UNIT SCHOOL - COMMUNICATIONS (AERIAL & BURIED)
 - METRO - COMMUNICATIONS (AERIAL & BURIED)
 - MCLEOD TELECOMMUNICATIONS SERVICES, LLC - COMMUNICATIONS (AERIAL & BURIED)

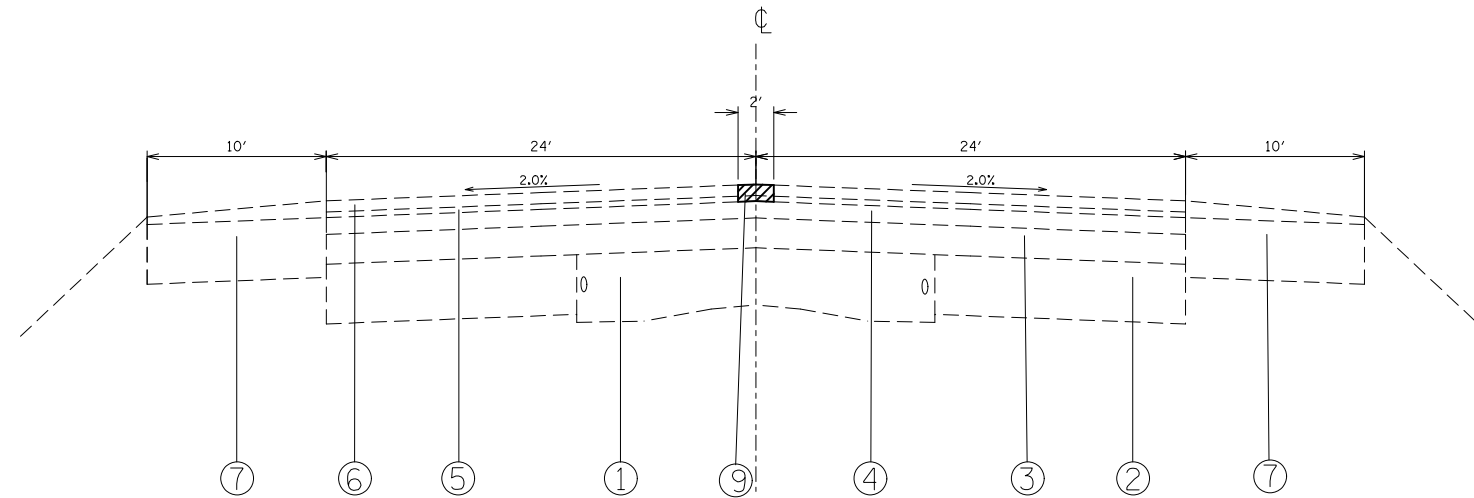
MEMBERS OF J.U.L.I.E CALL TOLL FREE (800) 892-0123 OR 811 AND ARE INDICATED BY * . NON-J.U.L.I.E. MEMBERS MUST BE NOTIFIED INDIVIDUALLY.
4. THE CONTRACTOR IS TO MAINTAIN ONE OPEN LANE OF TRAFFIC IN EACH DIRECTION AT ALL TIMES. SEE ALSO SPECIAL PROVISION ENTITLED "PEAK HOUR RESTRICTIONS."
5. THE ILLINOIS DEPARTMENT OF TRANSPORTATION STRONGLY ENCOURAGES THE PRIME CONTRACTOR AND THEIR APPROVED SUB-CONTRACTORS TO HIRE MINORITY, WOMEN AND DISADVANTAGED INDIVIDUALS FROM ITS FEDERALLY FUNDED HIGHWAY CONSTRUCTION CAREERS TRAINING PROGRAM (HCCTP) TO HELP MEET WORK FORCE AND TRAINEE GOALS. THIS PROGRAM IS TRAINING MINORITIES, WOMEN AND DISADVANTAGED INDIVIDUALS IN HIGHWAY CONSTRUCTION-RELATED SKILLS, [E.G., MATH FOR THE TRADES, JOB READINESS, SITE PLANS, SITE WORK, TOOLS USE, ETC.] AND OSHA 10 HOUR CERTIFICATION, TO PREPARE THEM FOR A CAREER IN THE HIGHWAY CONSTRUCTION TRADES. GRADUATES ARE WELL-TRAINED AND READY TO BECOME PRODUCTIVE ENTRY-LEVEL CONSTRUCTION WORKERS. PLEASE CONTACT THE DISTRICT 8 EEO OFFICE AT 618-346-3360 AND/OR THE HCCTP COORDINATOR AT 618-874-6528 TO LEARN MORE ABOUT THE PROGRAM AND FOR ASSISTANCE IN MEETING WORK FORCE AND TRAINING GOALS.
6. ALL TURF AREAS DISTURBED BY THE CONTRACTOR SHALL BE SEEDED WITH THE APPROPRIATE EROSION CONTROL, AS DIRECTED BY THE ENGINEER, AT THE CONTRACTOR'S EXPENSE.
7. NO OVERNIGHT LANE CLOSURES WILL BE PERMITTED.
8. THE FOLLOWING MIXTURE REQUIREMENTS ARE APPLICABLE FOR THIS PROJECT:

MIXTURE USE	SURFACE
AC/PG	PG 64-22
RAP % (MAX)	SEE SPECIAL PROVISION
DESIGN AIR VOIDS	4.0% @ Ndes=70
MIX COMPOSITION (GRADATION)	IL 9.5
FRICTION AGG	MIXTURE "C"
QUALITY MGMT PROGRAM	QC/QA

COMMITMENTS

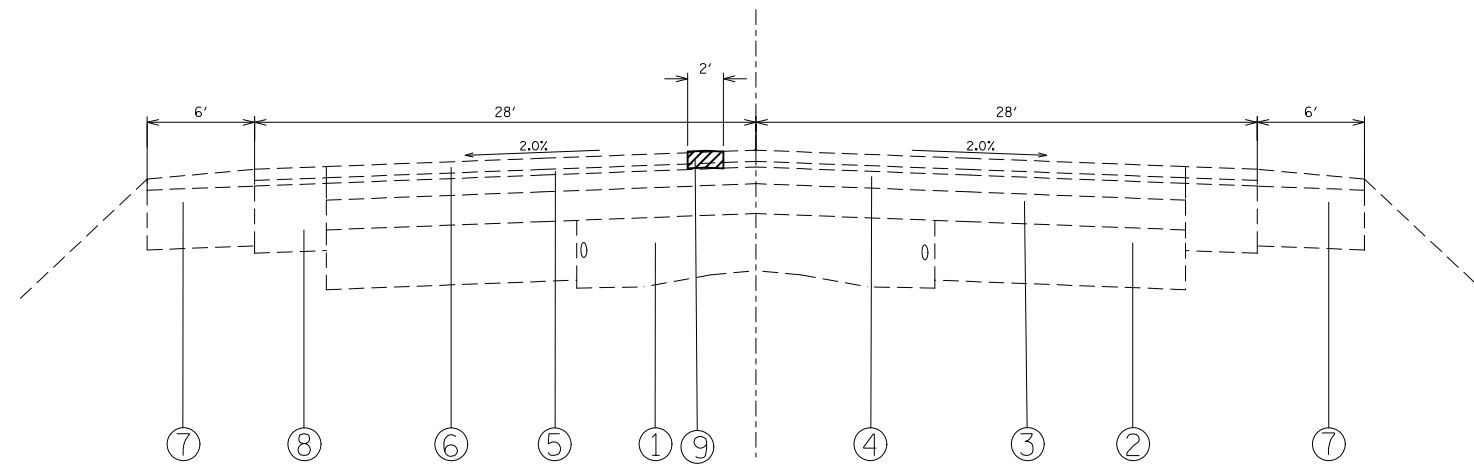
NONE

- LEGEND**
- ① EXISTING PCC PAVEMENT (9''-7''-9'')
 - ② EXISTING PCC WIDENING (8'')
 - ③ EXISTING BITUMINOUS RESURFACING (4'')
 - ④ EXISTING BITUMINOUS RESURFACING (2-1/4'')
 - ⑤ EXISTING LEVELING BINDER, SUPERPAVE - 3/4''
 - ⑥ EXISTING BITUMINOUS CONCRETE SURFACE COURSE, SUPERPAVE, MIX D - 1 1/2''
 - ⑦ EXISTING BIT. BASE COURSE WIDENING SUPERPAVE - 9''
 - ⑧ EXISTING BITUMINOUS SHOULDER (8'')
 - ⑨ PROPOSED LONGITUDINAL PARTIAL DEPTH PATCHING - 2 1/4''



TYPICAL SECTION

STA. 149+50 TO STA. 290+00
OMISSION 236+00 TO 257+20



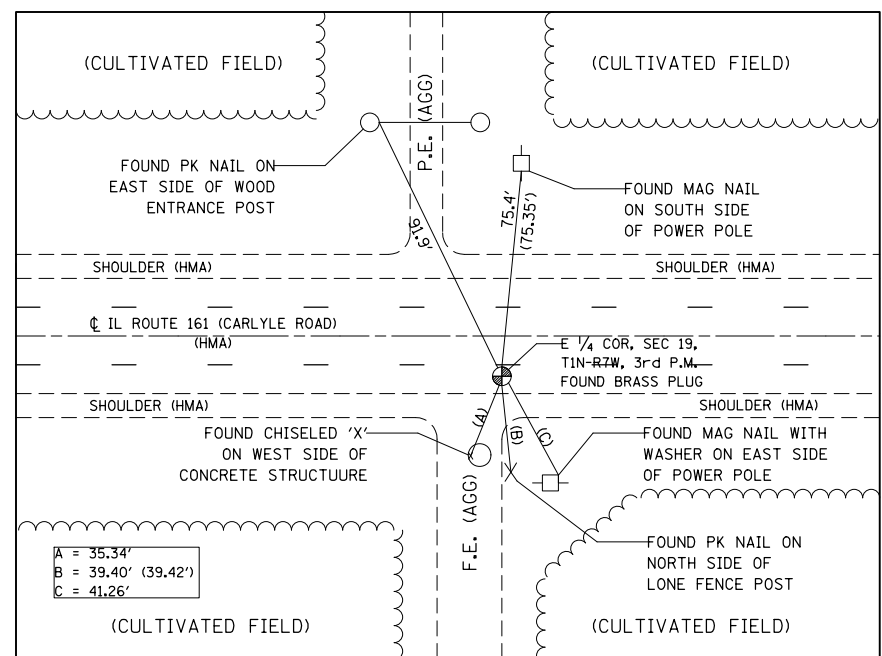
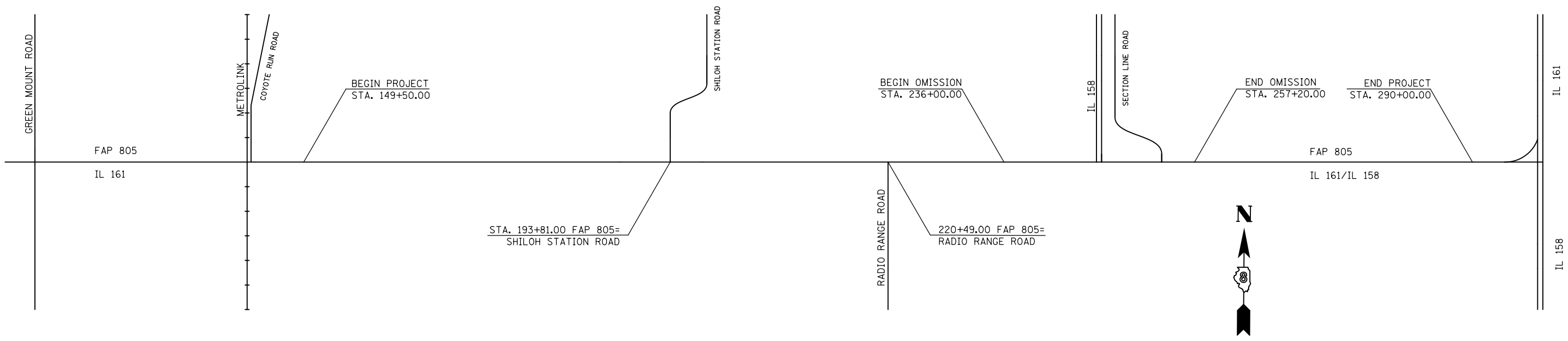
TYPICAL SECTION

STA. 187+36 TO STA. 197+82

FILE NAME =	USER NAME = lewiska	DESIGNED -	REVISED -	STATE OF ILLINOIS DEPARTMENT OF TRANSPORTATION	TYPICAL SECTION			F.A.P. RTE.	SECTION	COUNTY	TOTAL SHEETS	SHEET NO.
pw:\IL\084EBIDINTEG.illinois.gov\PWIDOT\Documents\IDOT Offices\District 8\Projects\0876\DRAWING\DATA\CADsheets\0876J87-sht-typical	DESIGNED -	REVISED -	805					124, 125-I-1	ST. CLAIR	10	4	
Default	PLOT SCALE = 100.0000' / in.	CHECKED -	REVISED -		SCALE: NONE SHEET OF SHEETS STA. TO STA.			CONTRACT NO. 76J87				
	PLOT DATE = 2/3/2017	DATE -	REVISED -		ILLINOIS FED. AID PROJECT							

PAVEMENT MARKING SCHEDULE					
LOCATION			RAISED REFLECTIVE PAVEMENT MARKER REMOVAL	RAISED REFLECTIVE PAVEMENT MARKERS	PAINT PAVEMENT MARKING - LINE 4"
STATION	TO	STATION	EACH	EACH	FOOT
149+50.00		187+36.00	95	95	7572
187+36.00		193+30.00	15	15	1188
194+10.00		197+82.00	10	10	744
197+82.00		236+00.00	96	96	7636
257+20.00		290+00.00	82	82	6560
TOTAL			298	298	23700

RESURFACING SCHEDULE						
STA.	TO	STA.	LONGITUDINAL PARTIAL DEPTH PATCHING	BITUMINOUS MATERIAL (TACK COAT)	LONGITUDINAL PARTIAL DEPTH REMOVAL, 2.25"	CENTERLINE RUMBLE STRIPS, 16"
			TON	POUND	FOOT	FOOT
149+50.00	TO	187+36.00	107	379	3786	3786
187+36.00	TO	193+30.00	17	60	594	594
194+10.00	TO	197+82.00	11	38	372	372
197+82.00	TO	236+00.00	107	382	3818	3818
257+20.00	TO	290+00.00	92	328	3280	3280
TOTAL:			334	1187	11850	11850

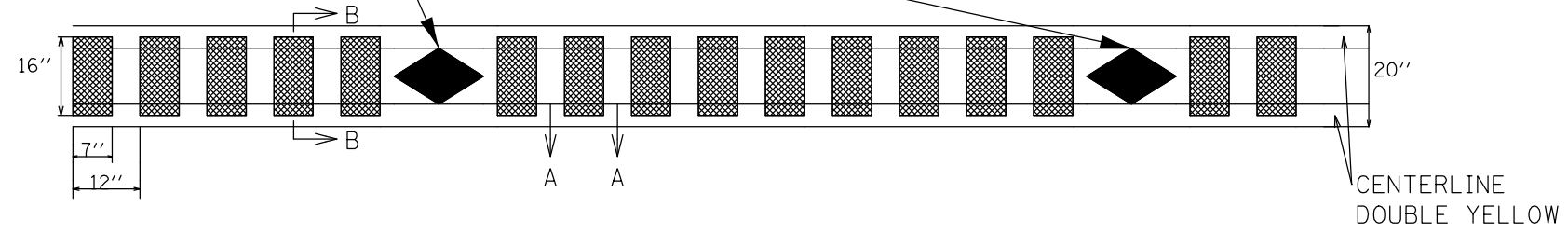


TIE POINT
 EAST 1/4 CORNER OF SECTION 19
 (FOUND BRASS PLUG ±3" DEEP IN ASPHALT, ±4.5' NORTH OF SOUTH
 EDGE OF PAVEMENT OF IL ROUTE 161 AT STATION 167+50)

NOT TO SCALE

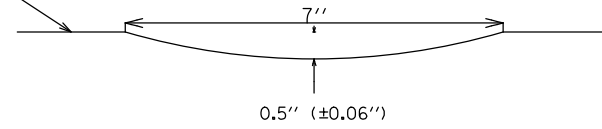
FILE NAME =	USER NAME = lewiska	DESIGNED -	REVISED -	STATE OF ILLINOIS DEPARTMENT OF TRANSPORTATION	PROJECT LOCATION MAP & TIE POINT				F.A.P. RTE.	SECTION	COUNTY	TOTAL SHEETS	SHEET NO.
pw:\IL\084EBIDINTEG\illinois.gov\PWIDOT\Documents\IDOT Offices\District 8\Projects\0876\DRAWING\DATA\CADsheets\0876J87-sht-plan.dwg	PLotted SCALE = 40.0000' / in.	CHECKED -	REVISED -						805	124, 125-I-1	ST. CLAIR	10	6
Default	PLOT DATE = 2/3/2017	DATE -	REVISED -		SCALE: 20 SHEET OF SHEETS STA. TO STA.				CONTRACT NO. 76J87				
											ILLINOIS FED. AID PROJECT		

DOUBLE AMBER RAISED REFLECTIVE
PAVEMENT MARKERS @ 40' CENTERS



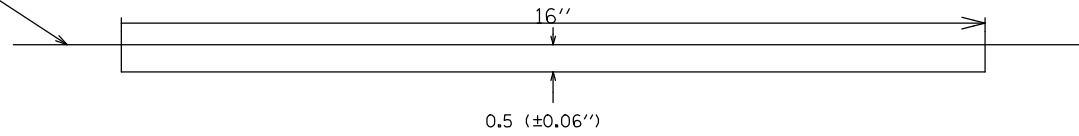
CENTERLINE RUMBLE STRIP DETAIL

ROADWAY
SURFACE



SECTION A-A

ROADWAY
SURFACE



SECTION B-B

NOTE: THE PROPOSED CENTERLINE PAVEMENT MARKINGS SHALL BE PLACED AFTER THE CONSTRUCTION OF THE RUMBLE STRIP. RUMBLE STRIP IS TO BE SPACED BETWEEN RAISED REFLECTIVE PAVEMENT MARKERS.

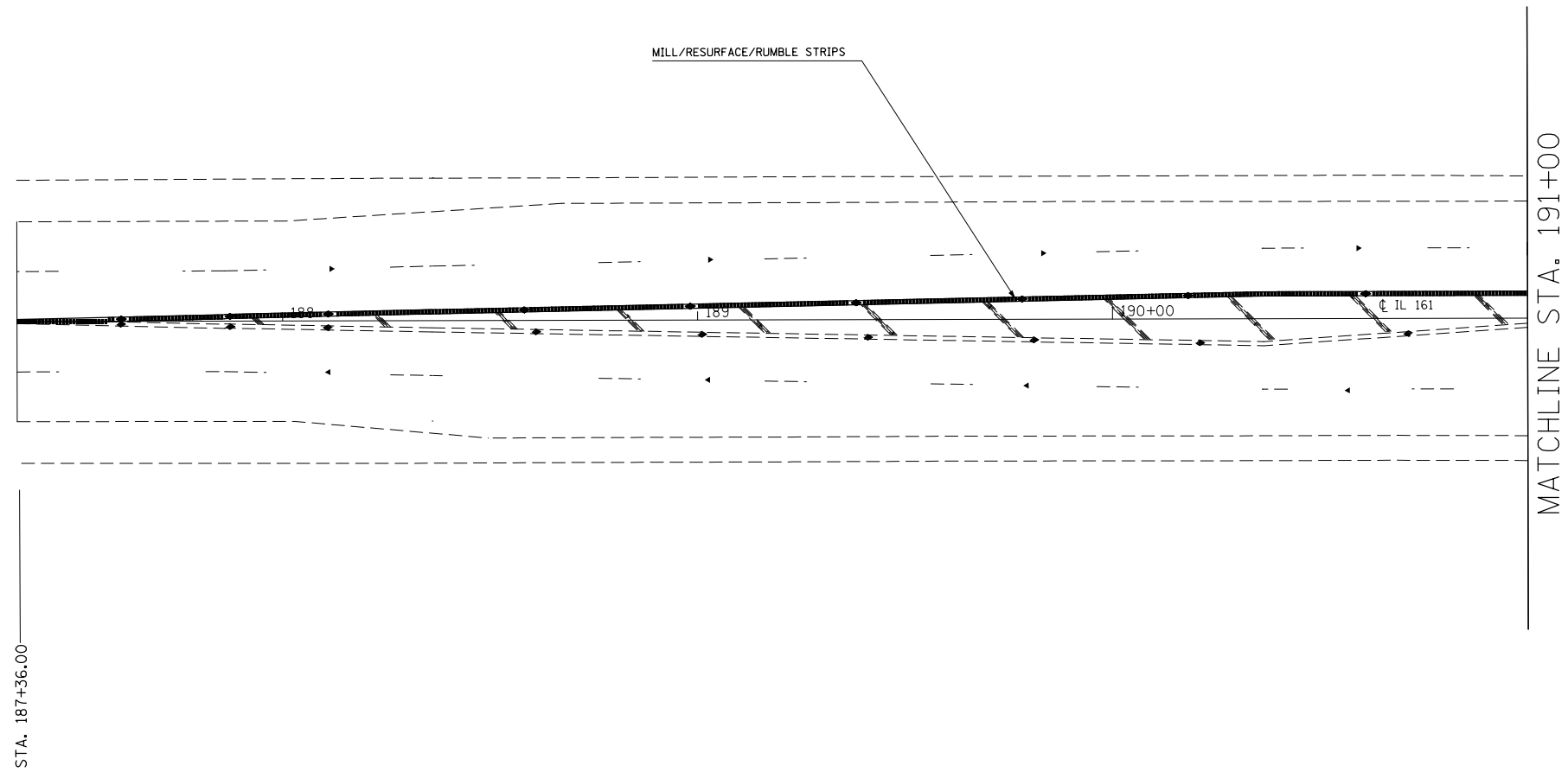
FILE NAME =	USER NAME = lewiska	DESIGNED -	REVISED -
pw:\IL\084EBIDINTEG.illinois.gov\PWIDOT\Documents\IDOT Offices\District 8\Projects\0876\DRAWING\DATA\EA\Sheets\0876J87-sht-plan.dwg		DRAWN -	REVISED -
Default	PLOT SCALE = 40.0000' / in.	CHECKED -	REVISED -
	PLOT DATE = 2/3/2017	DATE -	REVISED -

STATE OF ILLINOIS
DEPARTMENT OF TRANSPORTATION

CENTERLINE RUMBLE STRIP DETAIL

SCALE: 20 SHEET OF SHEETS STA. TO STA.

F.A.P. RTE.	SECTION	COUNTY	TOTAL SHEETS	SHEET NO.
805	124, 125-I-1	ST. CLAIR	10	7
CONTRACT NO. 76J87			ILLINOIS FED. AID PROJECT	



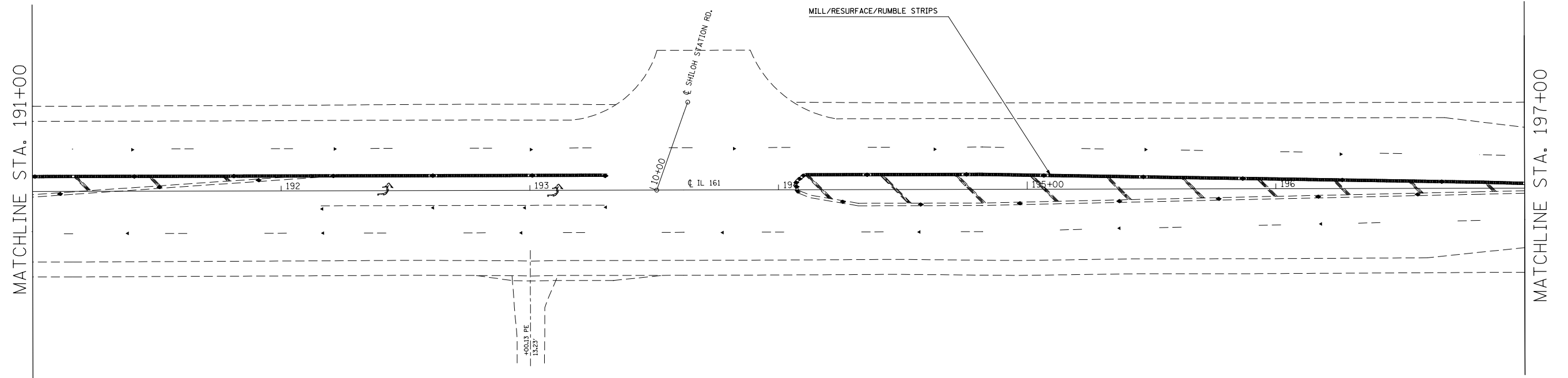
FILE NAME =	USER NAME = lewiska	DESIGNED -	REVISED -
pw:\IL\084EBIDINTEG.illinois.gov\PWIDOT\Documents\IDOT Offices\District 8\Projects\0876\DRAWING\DATA\CADsheets\D876J87-sht-plan.dwg		CHECKED -	REVISED -
Default	PLOT SCALE = 40.0000' / in.	DATE -	REVISED -
	PLOT DATE = 2/3/2017		

**STATE OF ILLINOIS
DEPARTMENT OF TRANSPORTATION**

SHILOH STATION ROAD DETAIL

SCALE: 20 SHEET OF SHEETS STA. TO STA.

F.A.P. RTE.	SECTION	COUNTY	TOTAL SHEETS	SHEET NO.
805	124, 125-I-1	ST. CLAIR	10	8
CONTRACT NO. 76J87			ILLINOIS FED. AID PROJECT	



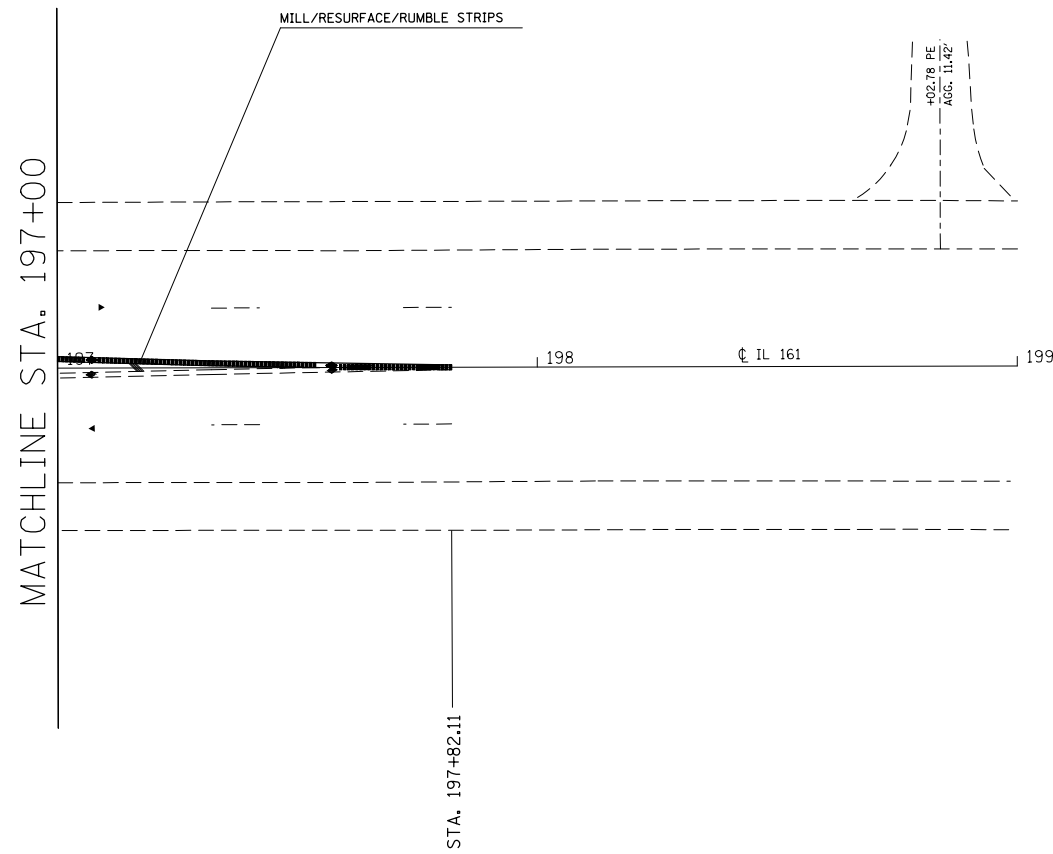
FILE NAME =	USER NAME = lewiska	DESIGNED -	REVISED -
pw:\IL\084EBIDINTEG.illinois.gov\PWIDOT\Documents\IDOT Offices\District 8\Projects\0876\DRAWING\DATA\CADsheets\0876J87-sht-plan.dwg		CHECKED -	REVISED -
Default	PLOT SCALE = 40.0000' / in.	DATE -	REVISED -
	PLOT DATE = 2/3/2017		

**STATE OF ILLINOIS
DEPARTMENT OF TRANSPORTATION**

SHILOH STATION ROAD DETAIL

SCALE: 20 SHEET OF SHEETS STA. TO STA.

F.A.P. RTE.	SECTION	COUNTY	TOTAL SHEETS	SHEET NO.
805	124, 125-I-1	ST. CLAIR	10	9
CONTRACT NO. 76J87			ILLINOIS FED. AID PROJECT	



FILE NAME =	USER NAME = lewiska	DESIGNED -	REVISED -
pw:\IL\084EBIDINTEG.illinois.gov\PWIDOT\Documents\IDOT Offices\District 8\Projects\0876\DRAWING\DATA\EA0sheets\0876J87-sht-plan.dwg		CHECKED -	REVISED -
Default	PLOT SCALE = 40.0000' / in.	DATE -	REVISED -
	PLOT DATE = 2/3/2017		

**STATE OF ILLINOIS
DEPARTMENT OF TRANSPORTATION**

SHILOH STATION ROAD DETAIL

SCALE: 20 SHEET OF SHEETS STA. TO STA.

F.A.P. RTE.	SECTION	COUNTY	TOTAL SHEETS	SHEET NO.
805	124, 125-I-1	ST. CLAIR	10	10
ILLINOIS FED. AID PROJECT			CONTRACT NO. 76J87	