

04-28-2017 LETTING ITEM 066

STATE OF ILLINOIS
DEPARTMENT OF TRANSPORTATION
DIVISION OF HIGHWAYS
**PROPOSED
HIGHWAY PLANS**

F.A.U. RTE. 3729	SECTION 2014-069RS	COUNTY COOK	TOTAL SHEETS 30	SHEET NO. 1
ILLINOIS CONTRACT NO. 62A10				

D-91-061-15

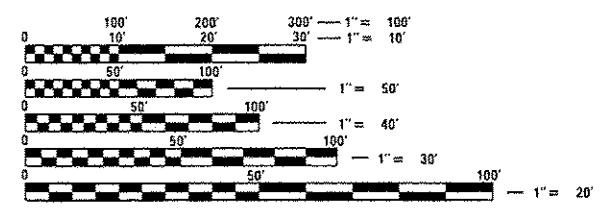
FOR INDEX OF SHEETS, SEE SHEET NO. 2

PROJECT LOCATED IN THE CITY OF CHICAGO

FAU ROUTE 3729: LINCOLN AVENUE
FROM FOSTER AVENUE TO WESTERN AVENUE
SECTION 2014-069RS
RESURFACING (3P)
COOK COUNTY
C-91-061-15
PROJECT STP-3729(001)



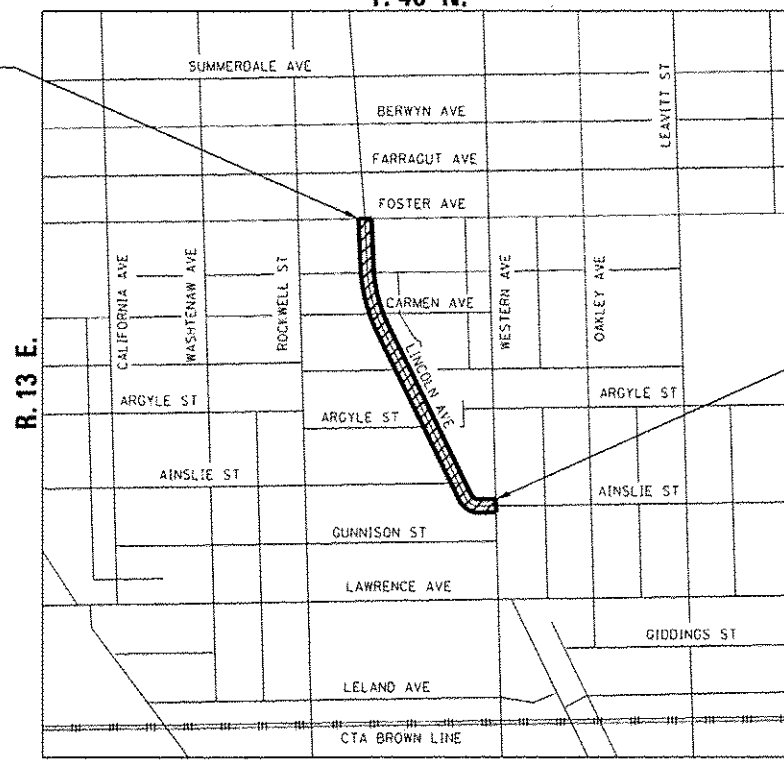
TRAFFIC DATA
POSTED SPEED: 30 MPH
DESIGN SPEED: 35 MPH
FUNCTIONAL CLASSIFICATION:
MAJOR COLLECTOR
ADT = 14,100 (2014)



FULL SIZE PLANS HAVE BEEN PREPARED USING STANDARD ENGINEERING SCALES. REDUCED SIZED PLANS WILL NOT CONFORM TO STANDARD SCALES. IN MAKING MEASUREMENTS ON REDUCED PLANS, THE ABOVE SCALES MAY BE USED.

DIGGER
CHICAGO UTILITY ALERT NETWORK
1-312-744-7000

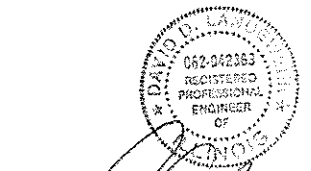
PROJECT LIMIT
STA. 32+88



PROJECT LIMIT
STA. 10+31

LOCATION MAP
NOT TO SCALE

GROSS AND NET LENGTH = 2257 FT. = 0.43 MILE



David Landweeer
2/17/17
DAVID LANDEWEER
LICENSED PROFESSIONAL ENGINEER
ILLINOIS NO. 062-042363 EXPIRES 11-30-17

STATE OF ILLINOIS
DEPARTMENT OF TRANSPORTATION
DIVISION OF HIGHWAYS
SUBMITTED February 22 20 17
[Signature]
DEPUTY DIRECTOR OF HIGHWAYS REGION ENGINEER
MAR 24 20 17
Maureen M. Adams P.E.
ENGINEER OF DESIGN AND ENVIRONMENT
MAR 24 20 17
[Signature]
DIRECTOR OF PROGRAM DEVELOPMENT



PRINTED BY THE AUTHORITY
OF THE STATE OF ILLINOIS

PROJECT MANAGER: ISSAM RAYYAN, P.E. (847) 705-4178
PROJECT ENGINEER: J. ALAIN MIDY, P.E. (847) 221-3056
CONTRACT NO. 62A10

2/21/2017 12:15:44 PM C:\Users\jlandwee\Documents\3729\3729-069RS\3729-069RS-1.dwg

INDEX OF SHEETS

SHEET NO.	DESCRIPTION
1	COVER SHEET
2	INDEX OF SHEETS, STATE STANDARDS AND GENERAL NOTES
3 - 6	SUMMARY OF QUANTITIES
7	TYPICAL SECTIONS
8	SCHEDULE OF QUANTITIES
9 - 13	ROADWAY AND PAVEMENT MARKING SHEETS
14 - 18	ADA RAMP DETAILS
19	FRAMES AND LIDS ADJUSTMENT WITH MILLING (BD-08)
20	PAVEMENT PATCHING FOR HMA SURFACED PAVEMENT (BD-22)
21	CURB OR CURB AND GUTTER REMOVAL AND REPLACEMENT (BD-24)
22	BUTT JOINTS AND HMA TAPER (BD-32)
23	TRAFFIC CONTROL AND PROTECTION FOR SIDE ROADS, INTERSECTIONS AND DRIVEWAYS (TC-10)
24	TRAFFIC CONTROL AND PROTECTION AT TURN BAYS (TO REMAIN OPEN TO TRAFFIC) (TC-14)
25	SHORT TERM PAVEMENT MARKING LETTERS AND SYMBOLS (TC-16)
26	ARTERIAL ROAD INFORMATION SIGN (TC-22)
27 - 29	CITY OF CHICAGO TYPICAL PAVEMENT MARKINGS (TC-24)
30	DISTRICT 1 - DETECTOR LOOP INSTALLATION DETAIL FOR ROADWAY RESURFACING (TS-07)

GENERAL NOTES

- BEFORE STARTING ANY EXCAVATION, THE CONTRACTOR SHALL CALL "DIGGER" AT (312) 744-7000 FOR FIELD LOCATIONS OF BURIED ELECTRIC, TELEPHONE AND GAS FACILITIES. 48-HOUR MINIMUM NOTIFICATION IS REQUIRED.
- THE CONTRACTOR WILL NOT BE ALLOWED TO SET UP A YARD OR FIELD OFFICE ON STATE PROPERTY WITHOUT WRITTEN PERMISSION FROM THE DEPARTMENT.
- ALL DAMAGE TO EXISTING PAVEMENT MARKINGS OR RAISED REFLECTIVE PAVEMENT MARKERS OUTSIDE THOSE SHOWN ON THE PLANS SHALL BE REPLACED AT THE CONTRACTOR'S EXPENSE.
- IT SHALL BE THE CONTRACTOR'S RESPONSIBILITY TO VERIFY ALL DIMENSIONS AND CONDITIONS IN THE FIELD PRIOR TO CONSTRUCTION AND ORDERING OF MATERIALS.
- DO NOT SCALE PLANS FOR CONSTRUCTION DIMENSIONS.
- THE CONTRACTOR SHALL CONTACT THE DISTRICT ONE TRAFFIC CONTROL SUPERVISOR AT (847) 705-4470 A MINIMUM OF 72 HOURS IN ADVANCE OF BEGINNING OF WORK.
- ALL EXCAVATED SOILS FROM THE PROJECT SITE SHALL BE RE-USED AS FILL OR TOPSOIL AT THE PROJECT SITE. NO EXCAVATED SOILS FROM THE PROJECT SITE MAY BE DISPOSED OF AT ANY OFFSITE LOCATION.
- THE CONTRACTOR SHALL COORDINATE CONSTRUCTION ACTIVITIES WITH UTILITY COMPANIES AND THE CITY OF CHICAGO.
- TWO WEEKS PRIOR TO PLACEMENT OF PERMANENT PAVEMENT MARKINGS, THE ENGINEER SHALL CONTACT MR. CORY JUCIUS, ARTERIAL TRAFFIC FIELD ENGINEER, AT CORY.JUCIUS@ILLINOIS.GOV.
- THE THICKNESS OF THE HMA MIXTURE STATED IN THE SPECIFICATIONS IS THE NOMINAL THICKNESS. DEVIATIONS FROM THE NOMINAL THICKNESS WILL BE PERMITTED WHEN SUCH DEVIATIONS OCCUR DUE TO IRREGULARITIES IN THE EXISTING SURFACE OR BASE ON WHICH THE HMA SURFACE IS PLACED.
- ANY LOOSE MATERIAL DEPOSITED IN THE FLOW LINE OF DITCHES, GUTTERS OR OTHER DRAINAGE STRUCTURES SHALL BE REMOVED BY THE END OF EACH DAY BY THE CONTRACTOR AT THEIR EXPENSE.
- WHEN MILLED PAVEMENT IS OPEN TO TRAFFIC, THE MAXIMUM ALLOWABLE GRADE DIFFERENTIAL BETWEEN PASSES OF THE MILLING MACHINE SHALL NOT EXCEED 1 1/2 INCHES. A MAXIMUM GRADE DIFFERENTIAL OF 3 INCHES MAY BE ALLOWED IF THE EDGE OF THE MILLING IS SLOPED AT A MINIMUM OF 1:3 (V:H).
- BUTT JOINTS SHALL BE INSTALLED AT THE ENDS OF ALL RESURFACING (WHERE RESURFACING MEETS EXISTING PAVEMENT), IN ACCORDANCE WITH THE "BUTT JOINTS AND HMA TAPER" DETAILS SHEET INCLUDED IN THE PLANS, UNLESS OTHERWISE SPECIFIED.
- THE RESIDENT ENGINEER SHALL VERIFY ALL EXISTING PAVEMENT MARKINGS BEFORE MILLING.
- ALL PAVEMENT PATCHING LOCATIONS SHALL BE DETERMINED IN THE FIELD BY THE ENGINEER.
- THE CONTRACTOR SHALL BE REQUIRED TO PROVIDE ACCESS TO ABUTTING PROPERTY AT ALL TIMES DURING CONSTRUCTION OF THIS PROJECT.

IDOT STANDARDS

000001-06	STANDARD SYMBOLS, ABBREVIATIONS AND PATTERNS
280001-07	TEMPORARY EROSION CONTROL SYSTEMS
424001-09	PERPENDICULAR CURB RAMPS FOR SIDEWALKS
424006-02	DIAGONAL CURB RAMPS FOR SIDEWALKS
424011-03	CORNER PARALLEL CURB RAMPS FOR SIDEWALKS
424016-03	MID-BLOCK CURB RAMPS FOR SIDEWALKS
424021-03	DEPRESSED CORNER FOR SIDEWALKS
424026-01	ENTRANCE / ALLEY PEDESTRIAN CROSSINGS
442201-03	CLASS C AND D PATCHES
701101-05	OFF-ROAD OPERATIONS, MULTILANE, 15' TO 24" FROM PAVEMENT EDGE
701427-05	LANE CLOSURE, MULTILANE, INTERMITTENT OR MOVING OPERATIONS, FOR SPEEDS <= 40 MPH
701602-08	URBAN LANE CLOSURE, MULTILANE, 2W WITH BIDIRECTIONAL LEFT TURN LANE
701606-10	URBAN SINGLE LANE CLOSURE, MULTILANE, 2W WITH MOUNTABLE MEDIAN
701611-01	URBAN HALF ROAD CLOSURE, MULTILANE, 2W WITH MOUNTABLE MEDIAN
701701-10	URBAN LANE CLOSURE, MULTILANE INTERSECTION
701801-06	SIDEWALK, CORNER OR CROSSWALK CLOSURE
701901-06	TRAFFIC CONTROL DEVICES

M:\LINCOLN AVE (12-151-005)\Design\Civil\CADD Sheets\0162410-INT-INDEX.dgn



USER NAME	David	DESIGNED	KJC	REVISED	-
		DRAWN	KJC	REVISED	-
PLOT SCALE		CHECKED	DDL	REVISED	-
PLOT DATE	2/17/2017	DATE	02/26/15	REVISED	-

**STATE OF ILLINOIS
DEPARTMENT OF TRANSPORTATION**

**LINCOLN AVENUE RESURFACING (FOSTER AVE TO WESTERN AVE)
INDEX OF SHEETS, STATE STANDARDS AND GENERAL NOTES**

F.A.U. RTE.	SECTION	COUNTY	TOTAL SHEETS	SHEET NO.
3729	2014-069RS	COOK	30	2
SCALE:			SHEET 1 OF 1 SHEETS STA. TO STA.	
ILLINOIS FED. AID PROJECT				

CONTRACT NO. 62A10

R:\LINCOLN_AVE (12-154-088)\Design\Civil\CADD Sheets\0162418-htc-500.dgn

SI	CODE NO.	ITEM	UNIT	TOTAL QUANTITY	80% FED 20% STATE
					ROADWAY 0005
					URBAN
	20200100	EARTH EXCAVATION	CU YD	58	58
	20201200	REMOVAL AND DISPOSAL OF UNSUITABLE MATERIAL	CU YD	3	3
	21101505	TOPSOIL EXCAVATION AND PLACEMENT	CU YD	1	1
	25200110	SODDING, SALT TOLERANT	SO YD	13	13
	40600290	BITUMINOUS MATERIALS (TACK COAT)	POUND	8591	8591
	40600400	MIXTURE FOR CRACKS, JOINTS, AND FLANGEWAYS	TON	20	20
	40600827	POLYMERIZED LEVELING BINDER (MACHINE METHOD), IL-4.75, N50	TON	535	535
	40600982	HOT-MIX ASPHALT SURFACE REMOVAL - BUTT JOINT	SO YD	185	185
	40603340	HOT-MIX ASPHALT SURFACE COURSE, MIX "D", N70	TON	1070	1070
	42001300	PROTECTIVE COAT	SO YD	433	433
	42400200	PORTLAND CEMENT CONCRETE SIDEWALK 5 INCH	SO FT	3432	3432
	42400800	DETECTABLE WARNINGS	SO FT	144	144
	44000100	PAVEMENT REMOVAL	SO YD	9	9
	44000158	HOT-MIX ASPHALT SURFACE REMOVAL, 2 1/4"	SO YD	12727	12727

X SPECIALTY ITEM
 • SPECIAL PROVISION ITEM



USER NAME • David	DESIGNED - KJC	REVISED -
PLOT SCALE •	DRAWN - KJC	REVISED -
PLOT DATE • 2/17/2017	CHECKED - DDL	REVISED -
	DATE - 02/26/15	REVISED -

**STATE OF ILLINOIS
DEPARTMENT OF TRANSPORTATION**

**LINCOLN AVENUE RESURFACING (FOSTER AVE TO WESTERN AVE)
SUMMARY OF QUANTITIES**

SCALE: SHEET 1 OF 4 SHEETS STA. TO STA.

F.A.U. RTE.	SECTION	COUNTY	TOTAL SHEETS	SHEET NO.
3729	2014-069RS	COOK	30	3
ILLINOIS FED. AID PROJECT				CONTRACT NO. 62A10

SI	CODE NO.	ITEM	UNIT	URBAN	
				TOTAL QUANTITY	100% STATE
					ROADWAY
					0005
	44000600	SIDEWALK REMOVAL	SO FT	3308	3308
	44201798	CLASS D PATCHES, TYPE I, 13 INCH	SO YD	150	150
	44201803	CLASS D PATCHES, TYPE II, 13 INCH	SO YD	300	300
	44201807	CLASS D PATCHES, TYPE III, 13 INCH	SO YD	150	150
*	66900260	NONSPECIAL WASTE DISPOSAL	CU YD	27	27
	67000400	ENGINEER'S FIELD OFFICE, TYPE A	CAL MO	6	6
*	66900450	SPECIAL WASTE PLANS AND REPORTS	LSUM	1	1
	67100100	MOBILIZATION	LSUM	1	1
*	66900530	SOIL DISPOSAL ANALYSIS	EACH	2	2
	70102625	TRAFFIC CONTROL AND PROTECTION, STANDARD 701606	LSUM	1	1
	70102632	TRAFFIC CONTROL AND PROTECTION, STANDARD 701602	LSUM	1	1
	70102634	TRAFFIC CONTROL AND PROTECTION, STANDARD 701611	LSUM	1	1
	70102635	TRAFFIC CONTROL AND PROTECTION, STANDARD 701701	LSUM	1	1
	70102640	TRAFFIC CONTROL AND PROTECTION, STANDARD 701801	LSUM	1	1
	70300100	SHORT TERM PAVEMENT MARKING	FOOT	390	390
	70300150	SHORT TERM PAVEMENT MARKING REMOVAL	SO FT	130	130
	70300210	TEMPORARY PAVEMENT MARKING LETTERS AND SYMBOLS	SO FT	279	279

14

X SPECIALTY ITEM
 * SPECIAL PROVISION ITEM

N:\PROJECTS\154-086\Design\Civil\154000 Sheets\0162418-141-500.dgn 500 2



USER NAME : David	DESIGNED - KJC	REVISED -
PLLOT SCALE *	DRAWN - KJC	REVISED -
PLLOT DATE * 2/17/2017	CHECKED - DDL	REVISED -
	DATE - 02/26/15	REVISED -

STATE OF ILLINOIS
 DEPARTMENT OF TRANSPORTATION

LINCOLN AVENUE RESURFACING (FOSTER AVE TO WESTERN AVE)
 SUMMARY OF QUANTITIES

SCALE: SHEET 2 OF 4 SHEETS STA. TO STA.

F.A.U. RTE.	SECTION	COUNTY	TOTAL SHEETS	SHEET NO.
3729	2014-069RS	COOK	30	4
CONTRACT NO. 62A10			ILLINOIS FED. AID PROJECT	

SI	CODE NO.	ITEM	UNIT	TOTAL QUANTITY	URBAN
					100% STATE
					ROADWAY
					0005
	70300220	TEMPORARY PAVEMENT MARKING - LINE 4"	FOOT	5924	5924
	70300240	TEMPORARY PAVEMENT MARKING - LINE 6"	FOOT	567	567
	70300280	TEMPORARY PAVEMENT MARKING - LINE 24"	FOOT	1337	1337
*	78000100	THERMOPLASTIC PAVEMENT MARKING - LETTERS AND SYMBOLS	50 FT	140	140
X	78000200	THERMOPLASTIC PAVEMENT MARKING - LINE 4"	FOOT	5924	5924
X	78000400	THERMOPLASTIC PAVEMENT MARKING - LINE 6"	FOOT	567	567
X	78000600	THERMOPLASTIC PAVEMENT MARKING - LINE 12"	FOOT	415	415
X	78000650	THERMOPLASTIC PAVEMENT MARKING - LINE 24"	FOOT	1337	1337
X	88600600	DETECTOR LOOP REPLACEMENT	FOOT	62	62
	X0320050	CONSTRUCTION LAYOUT (SPECIAL)	LSUM	1	1
	X6030310	FRAMES AND LIDS TO BE ADJUSTED (SPECIAL)	EACH	28	28
	X7030005	TEMPORARY PAVEMENT MARKING REMOVAL	50 FT	5212	5212
	Z0004562	COMBINATION CONCRETE CURB AND GUTTER REMOVAL AND REPLACEMENT	FOOT	402	402
□	Z0018500	DRAINAGE STRUCTURES TO BE CLEANED	EACH	23	23

* SPECIALTY ITEM
 * SPECIAL PROVISION ITEM
 □ NON-PARTICIPATING

M:\LINCOLN AVE 112-154-006\Design\CAD\Sheets\0162010-011-500.dgn
 500 3



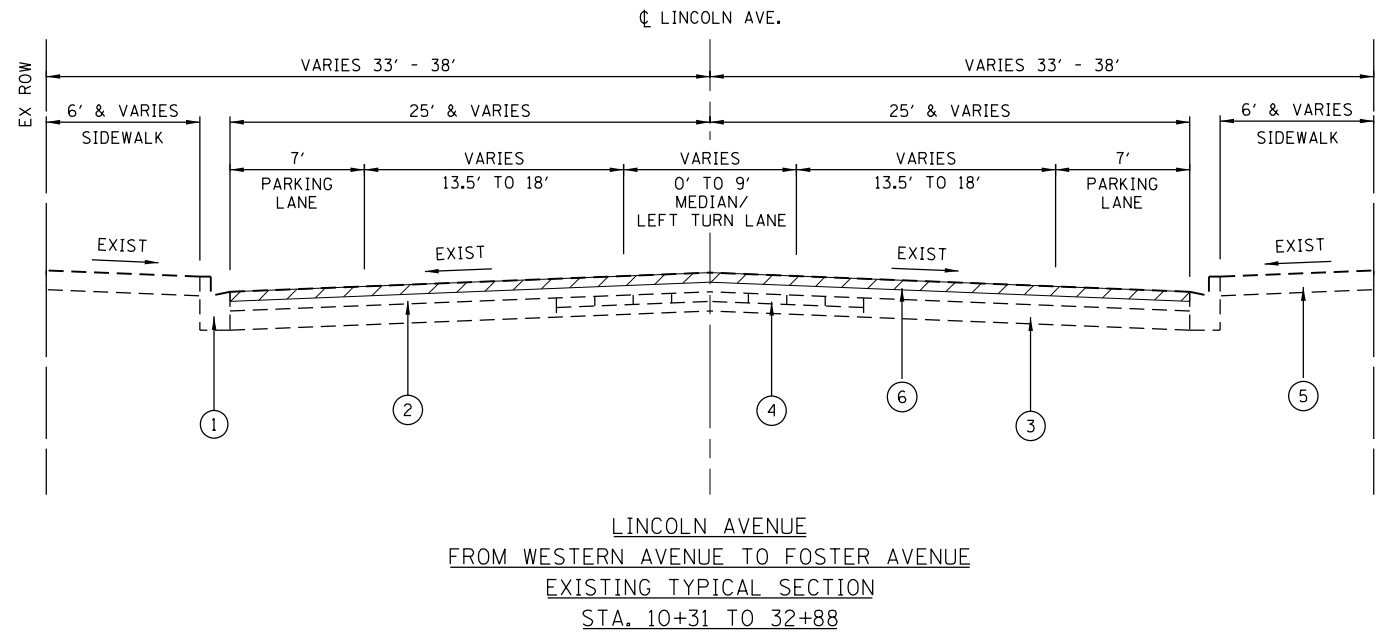
USER NAME : David	DESIGNED - KJC	REVISED -
	DRAWN - KJC	REVISED -
PLOT SCALE *	CHECKED - ODL	REVISED -
PLOT DATE * 2/17/2017	DATE - 02/26/15	REVISED -

STATE OF ILLINOIS
DEPARTMENT OF TRANSPORTATION

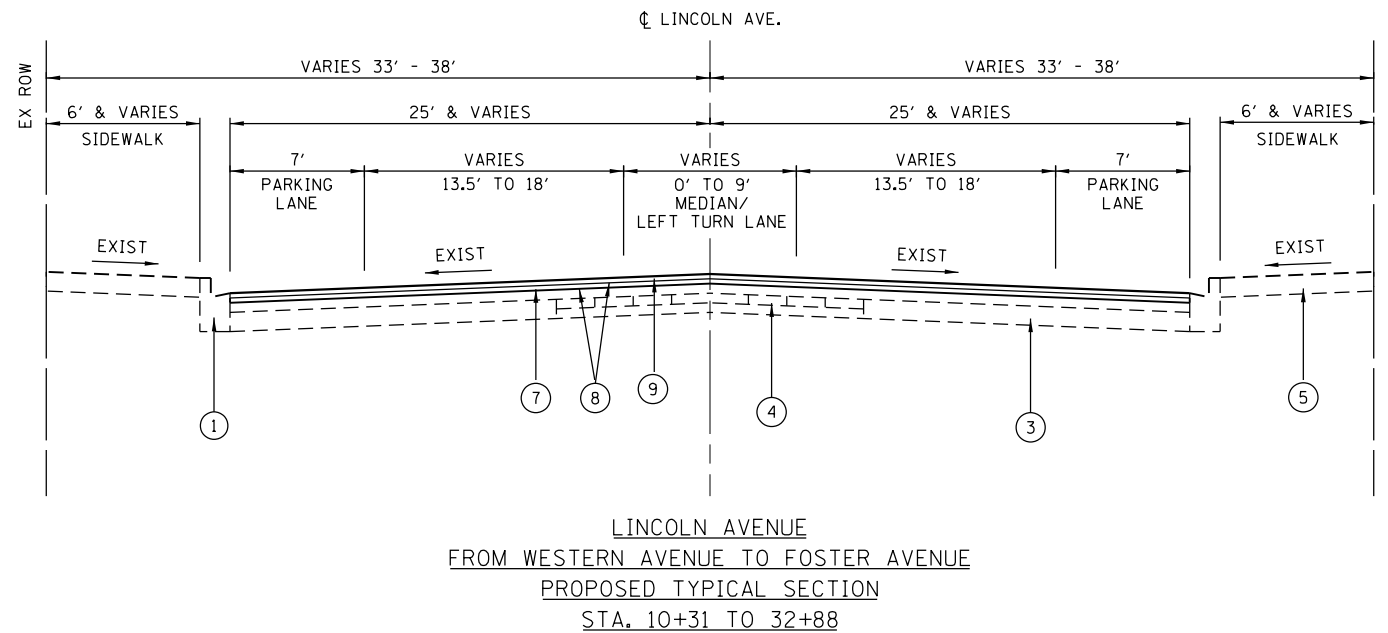
LINCOLN AVENUE RESURFACING (FOSTER AVE TO WESTERN AVE)
SUMMARY OF QUANTITIES

SCALE: SHEET 3 OF 4 SHEETS STA. TO STA.

F.A.U. RTE.	SECTION	COUNTY	TOTAL SHEETS	SHEET NO.
3729	2014-069RS	COOK	30	5
CONTRACT NO. 62A10			ILLINOIS FED. AID PROJECT	



LINCOLN AVENUE
FROM WESTERN AVENUE TO FOSTER AVENUE
EXISTING TYPICAL SECTION
STA. 10+31 TO 32+88



LINCOLN AVENUE
FROM WESTERN AVENUE TO FOSTER AVENUE
PROPOSED TYPICAL SECTION
STA. 10+31 TO 32+88

HOT-MIX ASPHALT MIXTURE REQUIREMENTS

MIXTURE TYPE	AIR VOIDS @ NDES	QUALITY MANAGEMENT PROGRAM (QMP)
HOT-MIX ASPHALT SURFACE COURSE, MIX "D", N70 (IL-9.5 MM)	4% @ 70 GYR	QC/OA
POLYMERIZED LEVELING BINDER (MACHINE METHOD), IL-4.75, N50	3.5% @ 50 GYR	QC/OA
CLASS D PATCHES (HMA BINDER IL-19 MM)	4% @ 70 GYR	QC/OA
QMP DESIGNATION: QUALITY CONTROL/QUALITY ASSURANCE (QC/OA); QUALITY CONTROL FOR PERFORMANCE (QCP); PAY FOR PERFORMANCE (PFP)		

NOTES:

1. THE UNIT WEIGHT USED TO CALCULATE ALL HMA MIXTURE QUANTITIES IS 112 LBS/SOYD/IN.
2. THE "AC TYPE" FOR ALL POLYMERIZED HMA MIXES SHALL BE "SBS/SBR PG 76-22" AND FOR NON-POLYMERIZED HMA THE "AC TYPE" SHALL BE "PG 64 -22" UNLESS MODIFIED BY DISTRICT ONE SPECIAL PROVISIONS.
3. FOR USE OF RECYCLED MATERIALS SEE DISTRICT ONE SPECIAL PROVISIONS.
4. QUALITY MANAGEMENT PROGRAM (QMP) IDENTIFIES THE PARTICULAR QUALITY CONTROL SPECIFICATION THAT APPLIES TO THE HMA MIXTURE.

LEGEND

- ① EXISTING CURB AND GUTTER, TYPE B-6.12
- ② EXISTING ASPHALT PAVEMENT, 6 3/4"
- ③ EXISTING CONCRETE BASE COURSE, 6"
- ④ EXISTING RAILROAD TRACKS
- ⑤ EXISTING PCC SIDEWALK
- ⑥ PROP. HOT-MIX ASPHALT SURFACE REMOVAL, 2 1/4"
- ⑦ PROP. POLYMERIZED LEVELING BINDER (MM), IL-4.75, N50, 3/4"
- ⑧ PROP. BITUMINOUS MATERIALS (TACK COAT)
- ⑨ PROP. HOT-MIX ASPHALT SURFACE COURSE, MIX "D", N70, 1 1/2"

NOTE: CONTRACTOR SHALL MILL PRIOR TO PATCHING

M:\LINCOLN AVE (12-154-006)\Design\Civil\CADD Sheets\0162A10-sh1-typical.dgn



USER NAME = DavidL	DESIGNED - KJC	REVISED -
PLOT SCALE =	DRAWN - KJC	REVISED -
PLOT DATE = 2/17/2017	CHECKED - DDL	REVISED -
	DATE - 02/26/15	REVISED -

STATE OF ILLINOIS
DEPARTMENT OF TRANSPORTATION

LINCOLN AVENUE RESURFACING (FOSTER AVE TO WESTERN AVE)
TYPICAL SECTIONS

SCALE: SHEET 1 OF 1 SHEETS STA. TO STA.

F.A.U. RTE.	SECTION	COUNTY	TOTAL SHEETS	SHEET NO.
3729	2014-069R5	COOK	30	7
CONTRACT NO. 62A10			ILLINOIS FED. AID PROJECT	

LINCOLN AVENUE / ADA RAMP IMPROVEMENTS SCHEDULE

INTERSECTION	QUADRANT	SUGGESTED CDOT STANDARD NO.	COMB. CURB AND GUTTER REMOVAL & REPLACEMENT (FT)	SIDEWALK REMOVAL (SQ FT)	PCC SIDEWALK, 5" (SQ FT)	DETECTABLE WARNINGS (SQ FT)
AINSLIE ST @ WESTERN AVE	NW	B-1-7	36	365	365	8
	SW	N/A	-	-	-	-
OLD LINCOLN @ AINSLIE ST	SW	B-1-4	-	55	49	12
	SE	B-1-4	-	36	36	12
LINCOLN AVE @ AINSLIE ST	NW	B-1-4	46	356	486	12
	NE	N/A	-	-	-	-
	SE	B-1-16	33	194	194	8
	SW	B-1-2	48	564	564	24
LINCOLN AVE @ ARGYLE ST	NW	N/A	-	-	-	-
	NE	B-1-16	63	242	242	12
	SE	N/A	-	-	-	-
	SW	B-1-4	37	399	399	8
LINCOLN AVE @ WINNEMAC AVE	NW	N/A	-	-	-	-
	NE	N/A	-	-	-	-
	SE	N/A	-	-	-	-
	SW	N/A	-	-	-	-
LINCOLN AVE @ CARMEN AVE	NW	N/A	-	-	-	-
	NE	B-1-2	50	237	237	16
	SE	N/A	-	-	-	-
	SW	N/A	-	-	-	-
LINCOLN AVE @ WINONA ST	NW	B-1-2	36	273	273	16
	NE	N/A	-	-	-	-
	SE	N/A	-	-	-	-
	SW	B-1-2	53	587	587	16
GRAND TOTAL			402	3,308	3,432	144

M:\LINCOLN AVE (12-154-006)\Design\Civil\CADD Sheets\0162A10-ah1-schedule.dgn
Default



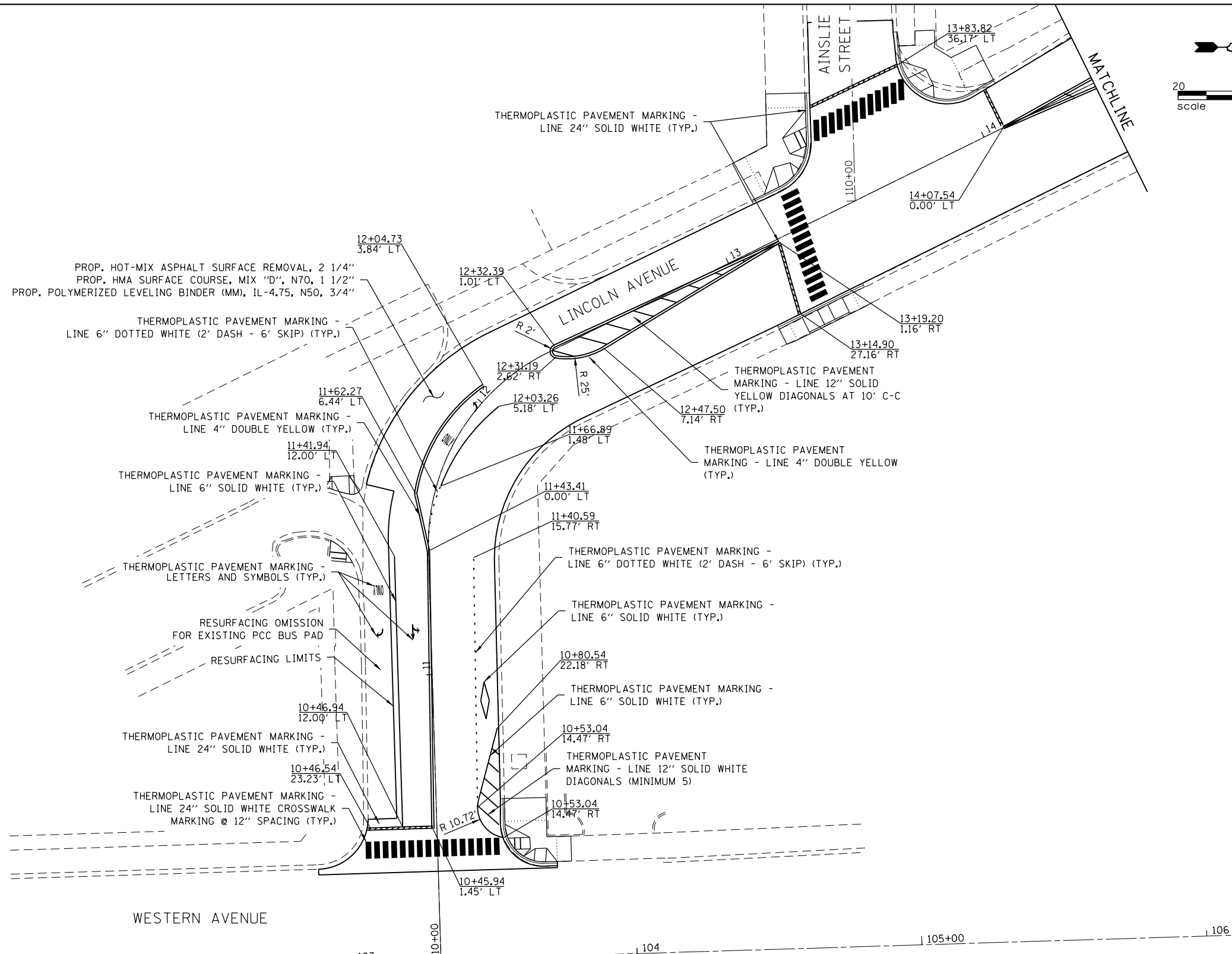
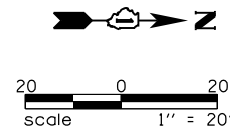
USER NAME = DavidL	DESIGNED - KJC	REVISED -
	DRAWN - KJC	REVISED -
PLOT SCALE =	CHECKED - DDL	REVISED -
PLOT DATE = 2/17/2017	DATE - 02/26/15	REVISED -

**STATE OF ILLINOIS
DEPARTMENT OF TRANSPORTATION**

**LINCOLN AVENUE RESURFACING (FOSTER AVE TO WESTERN AVE)
SCHEDULE OF QUANTITIES**

SCALE: SHEET 1 OF 1 SHEETS STA. TO STA.

F.A.U. RTE.	SECTION	COUNTY	TOTAL SHEETS	SHEET NO.
3729	2014-069RS	COOK	30	8
ILLINOIS FED. AID PROJECT			CONTRACT NO. 62A10	



GUNNISON STREET

WESTERN AVENUE

NOTES:

1. LIMITS OF RESURFACING ON SIDE STREETS THROUGHOUT THE IMPROVEMENT SHALL BE TO THE END OF THE RADIUS RETURN UNLESS OTHERWISE NOTED OR AS DIRECTED BY THE RESIDENT ENGINEER.
2. ALL FINAL PAVEMENT MARKINGS SHALL BE PLACED IN ACCORDANCE WITH "CITY OF CHICAGO TYPICAL PAVEMENT MARKINGS" DETAIL, TC-24 UNLESS OTHERWISE NOTED.

M:\LINCOLN AVE (12-154-006)\Design\Civil\CGADD Sheets\0162A10-ahf.pln.dgn



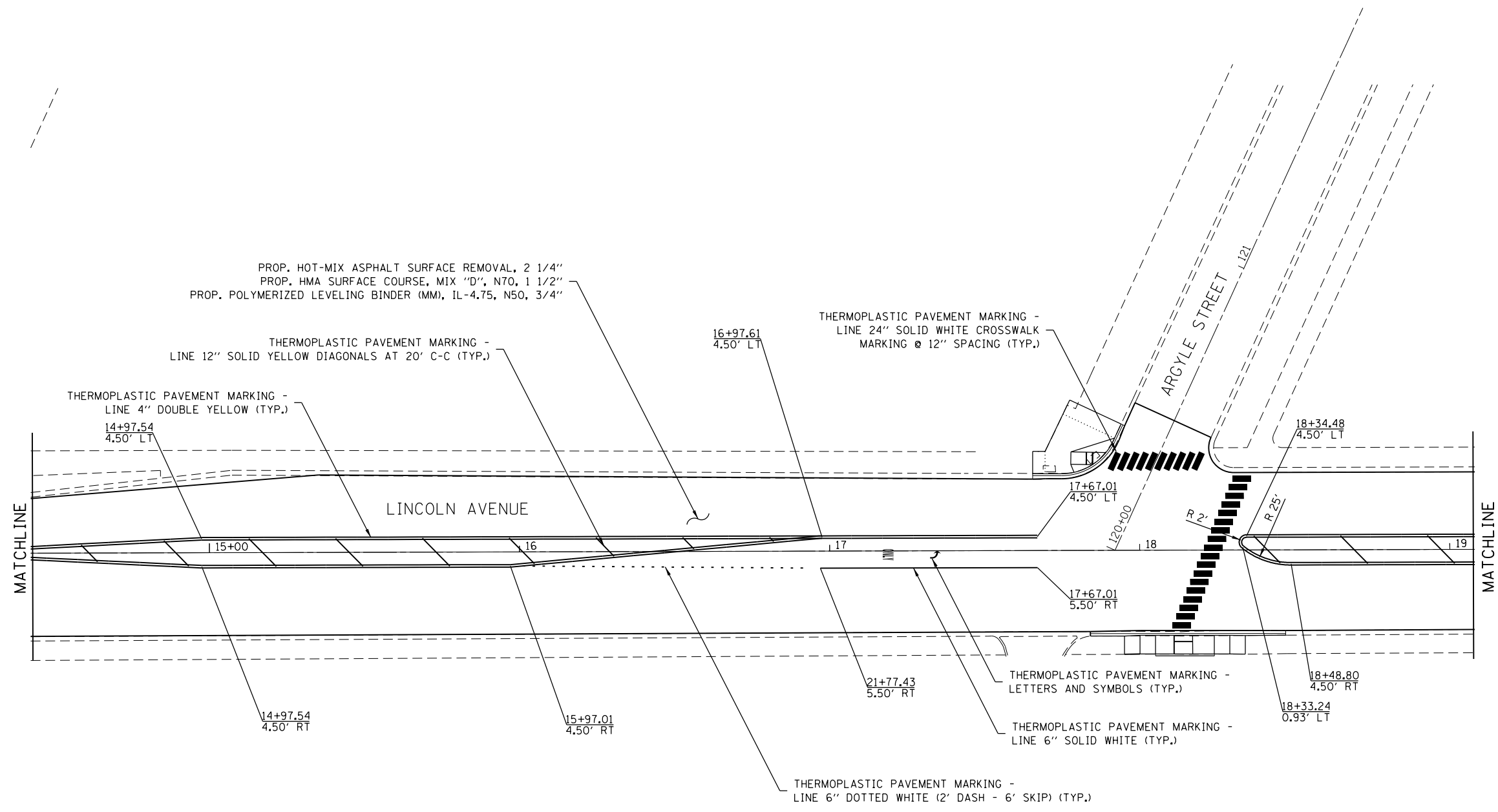
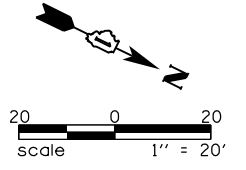
USER NAME = DavidL	DESIGNED - KJC	REVISED -
	DRAWN - KJC	REVISED -
PLOT SCALE =	CHECKED - DDL	REVISED -
PLOT DATE = 2/17/2017	DATE - 02/26/15	REVISED -

**STATE OF ILLINOIS
DEPARTMENT OF TRANSPORTATION**

**LINCOLN AVENUE RESURFACING (FOSTER AVE TO WESTERN AVE)
ROADWAY AND PAVEMENT MARKING SHEET**

F.A.U. RTE. 3729	SECTION 2014-069RS	COUNTY COOK	TOTAL SHEETS 30	SHEET NO. 9
CONTRACT NO. 62A10				
ILLINOIS FED. AID PROJECT				

SCALE: SHEET 1 OF 5 SHEETS STA. TO STA.



- NOTES:
1. LIMITS OF RESURFACING ON SIDE STREETS THROUGHOUT THE IMPROVEMENT SHALL BE TO THE END OF THE RADIUS RETURN UNLESS OTHERWISE NOTED OR AS DIRECTED BY THE RESIDENT ENGINEER.
 2. ALL FINAL PAVEMENT MARKINGS SHALL BE PLACED IN ACCORDANCE WITH "CITY OF CHICAGO TYPICAL PAVEMENT MARKINGS" DETAIL, TC-24 UNLESS OTHERWISE NOTED.

M:\LINCOLN AVE (12-154-006)\Design\Civil\Gradd Sheets\0162A10-ahf-pln-2.dgn



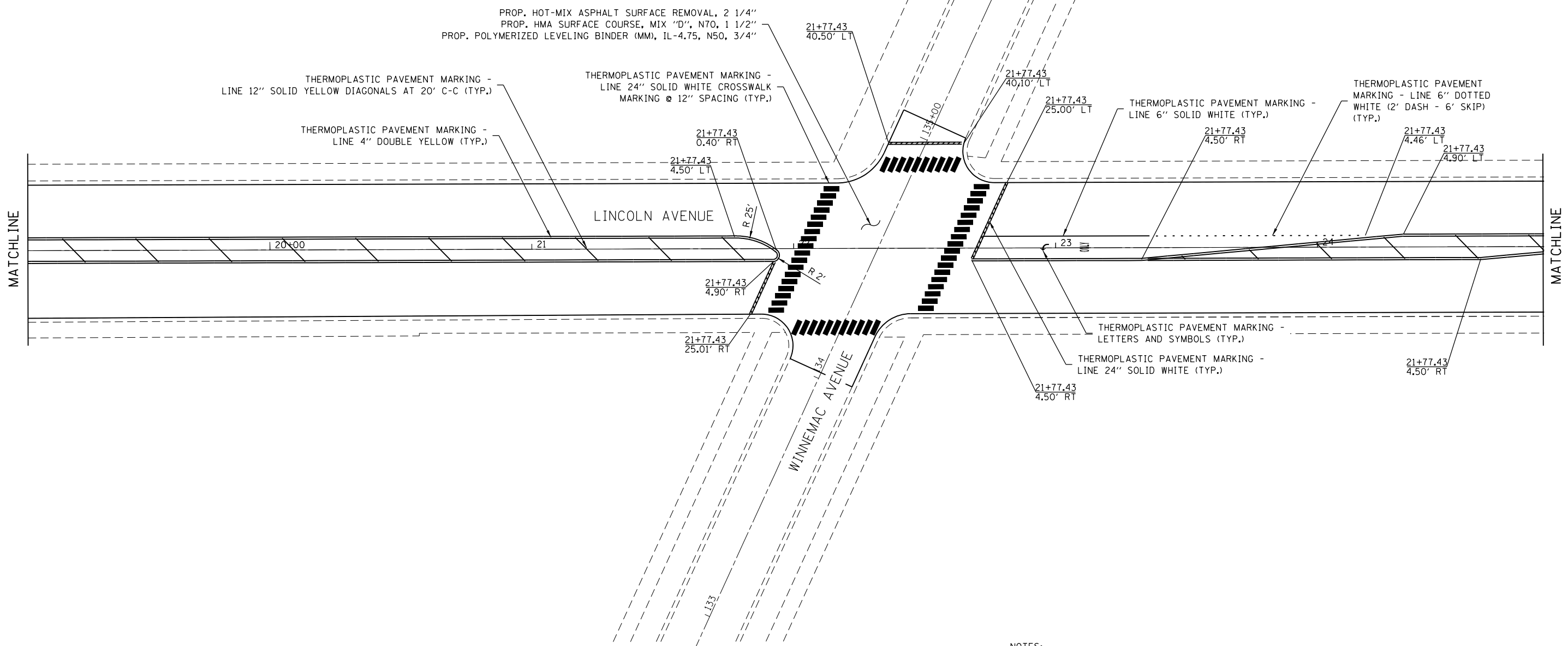
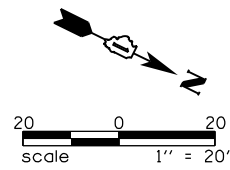
USER NAME = DavidL	DESIGNED - KJC	REVISED -
	DRAWN - KJC	REVISED -
PLOT SCALE =	CHECKED - DDL	REVISED -
PLOT DATE = 2/17/2017	DATE - 02/26/15	REVISED -

**STATE OF ILLINOIS
DEPARTMENT OF TRANSPORTATION**

**LINCOLN AVENUE RESURFACING (FOSTER AVE TO WESTERN AVE)
ROADWAY AND PAVEMENT MARKING SHEET**

SCALE: SHEET 2 OF 5 SHEETS STA. TO STA.

F.A.U. RTE. 3729	SECTION 2014-069RS	COUNTY COOK	TOTAL SHEETS 30	SHEET NO. 10
				CONTRACT NO. 62A10
ILLINOIS FED. AID PROJECT				



PROP. HOT-MIX ASPHALT SURFACE REMOVAL, 2 1/4"
 PROP. HMA SURFACE COURSE, MIX "D", N70, 1 1/2"
 PROP. POLYMERIZED LEVELING BINDER (MM), IL-4.75, N50, 3/4"

THERMOPLASTIC PAVEMENT MARKING -
 LINE 12" SOLID YELLOW DIAGONALS AT 20' C-C (TYP.)

THERMOPLASTIC PAVEMENT MARKING -
 LINE 24" SOLID WHITE CROSSWALK
 MARKING @ 12" SPACING (TYP.)

THERMOPLASTIC PAVEMENT MARKING -
 LINE 4" DOUBLE YELLOW (TYP.)

THERMOPLASTIC PAVEMENT MARKING -
 LINE 6" SOLID WHITE (TYP.)

THERMOPLASTIC PAVEMENT
 MARKING - LINE 6" DOTTED
 WHITE (2' DASH - 6' SKIP)
 (TYP.)

THERMOPLASTIC PAVEMENT MARKING -
 LETTERS AND SYMBOLS (TYP.)

THERMOPLASTIC PAVEMENT MARKING -
 LINE 24" SOLID WHITE (TYP.)

NOTES:

- LIMITS OF RESURFACING ON SIDE STREETS THROUGHOUT THE IMPROVEMENT SHALL BE TO THE END OF THE RADIUS RETURN UNLESS OTHERWISE NOTED OR AS DIRECTED BY THE RESIDENT ENGINEER.
- ALL FINAL PAVEMENT MARKINGS SHALL BE PLACED IN ACCORDANCE WITH "CITY OF CHICAGO TYPICAL PAVEMENT MARKINGS" DETAIL, TC-24 UNLESS OTHERWISE NOTED.

M:\LINCOLN AVE (12-154-006)\Design\Civil\CADD Sheets\0162A10-ehf-pln_3.dgn



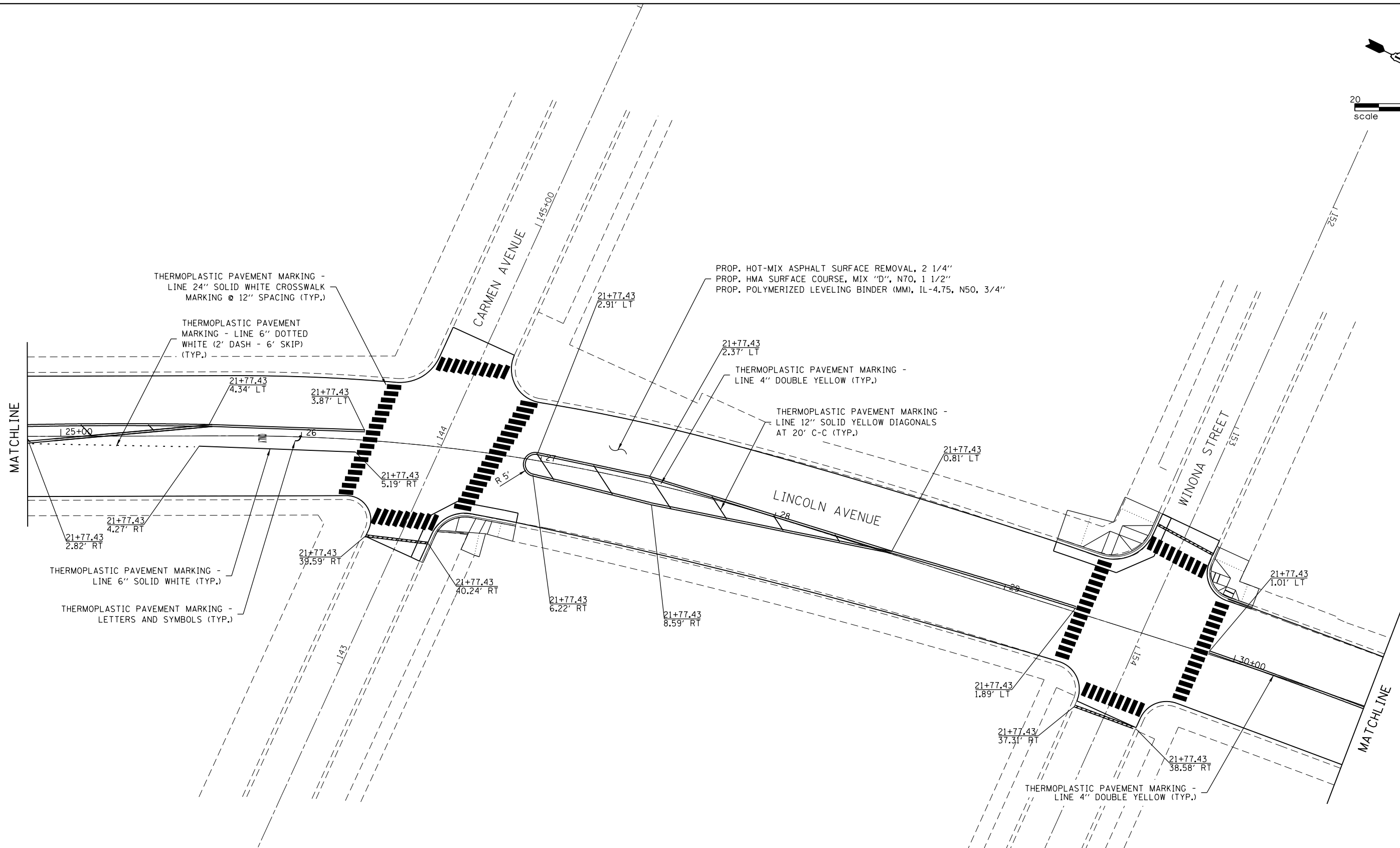
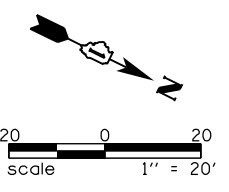
USER NAME = DavidL	DESIGNED - KJC	REVISED -
	DRAWN - KJC	REVISED -
PLOT SCALE =	CHECKED - DDL	REVISED -
PLOT DATE = 2/17/2017	DATE - 02/26/15	REVISED -

STATE OF ILLINOIS
 DEPARTMENT OF TRANSPORTATION

LINCOLN AVENUE RESURFACING (FOSTER AVE TO WESTERN AVE)
 ROADWAY AND PAVEMENT MARKING SHEET

F.A.U. RTE. 3729	SECTION 2014-069RS	COUNTY COOK	TOTAL SHEETS 30	SHEET NO. 11
CONTRACT NO. 62A10			ILLINOIS FED. AID PROJECT	

SCALE: SHEET 3 OF 5 SHEETS STA. TO STA.



- NOTES:
- LIMITS OF RESURFACING ON SIDE STREETS THROUGHOUT THE IMPROVEMENT SHALL BE TO THE END OF THE RADIUS RETURN UNLESS OTHERWISE NOTED OR AS DIRECTED BY THE RESIDENT ENGINEER.
 - ALL FINAL PAVEMENT MARKINGS SHALL BE PLACED IN ACCORDANCE WITH "CITY OF CHICAGO TYPICAL PAVEMENT MARKINGS" DETAIL, TC-24 UNLESS OTHERWISE NOTED.

M:\LINCOLN AVE (12-154-006)\Design\Civil\CADD Sheets\0162A10-ahp.pln-4.dgn
Default



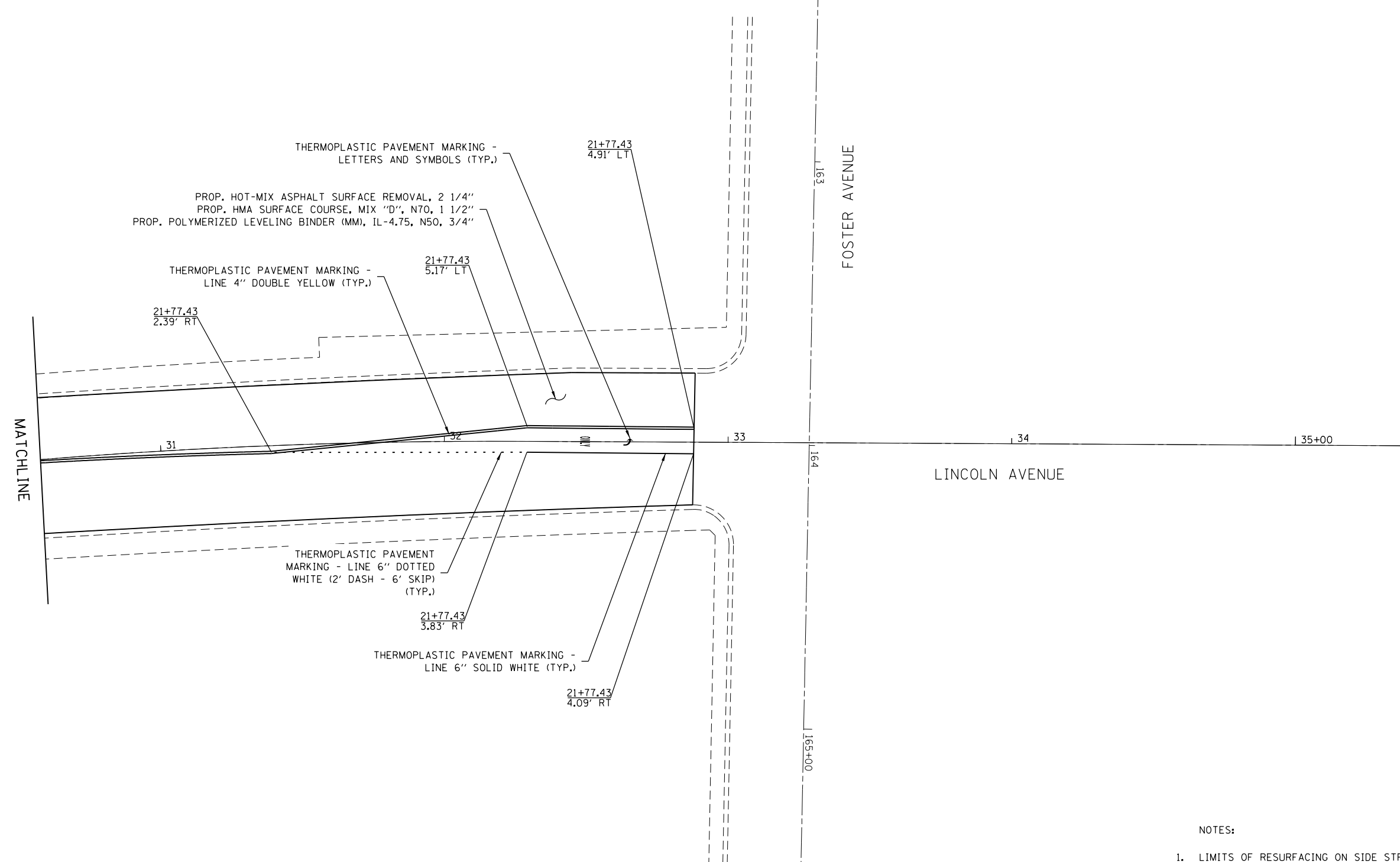
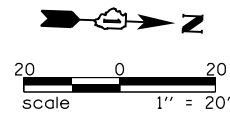
USER NAME = DavidL	DESIGNED - KJC	REVISED -
	DRAWN - KJC	REVISED -
PLOT SCALE =	CHECKED - DDL	REVISED -
PLOT DATE = 2/17/2017	DATE - 02/26/15	REVISED -

**STATE OF ILLINOIS
DEPARTMENT OF TRANSPORTATION**

**LINCOLN AVENUE RESURFACING (FOSTER AVE TO WESTERN AVE)
ROADWAY AND PAVEMENT MARKING SHEET**

F.A.U. RTE. = 3729	SECTION = 2014-069RS	COUNTY = COOK	TOTAL SHEETS = 30	SHEET NO. = 12
CONTRACT NO. 62A10				
ILLINOIS FED. AID PROJECT				

SCALE: SHEET 4 OF 5 SHEETS STA. TO STA.



NOTES:

- LIMITS OF RESURFACING ON SIDE STREETS THROUGHOUT THE IMPROVEMENT SHALL BE TO THE END OF THE RADIUS RETURN UNLESS OTHERWISE NOTED OR AS DIRECTED BY THE RESIDENT ENGINEER.
- ALL FINAL PAVEMENT MARKINGS SHALL BE PLACED IN ACCORDANCE WITH "CITY OF CHICAGO TYPICAL PAVEMENT MARKINGS" DETAIL, TC-24 UNLESS OTHERWISE NOTED.

M:\LINCOLN AVE (12-154-006)\Design\Civil\GrADD Sheets\0162A10-ahf-pln_5.dgn

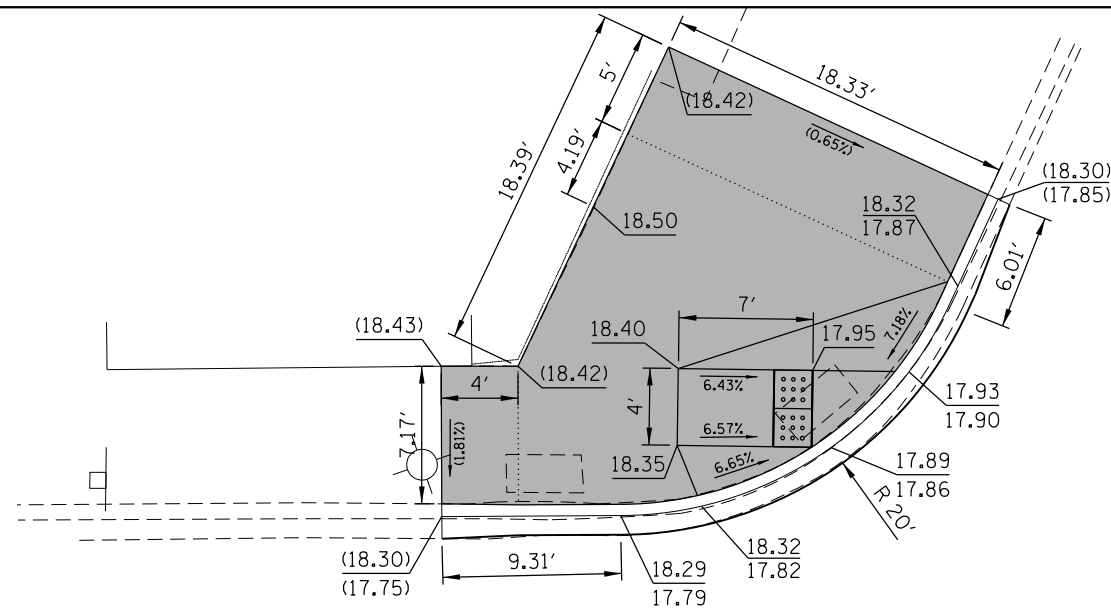
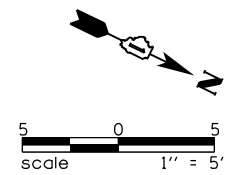


USER NAME = DavidL	DESIGNED - KJC	REVISED -
	DRAWN - KJC	REVISED -
PLOT SCALE =	CHECKED - DDL	REVISED -
PLOT DATE = 2/17/2017	DATE - 02/26/15	REVISED -

**STATE OF ILLINOIS
DEPARTMENT OF TRANSPORTATION**

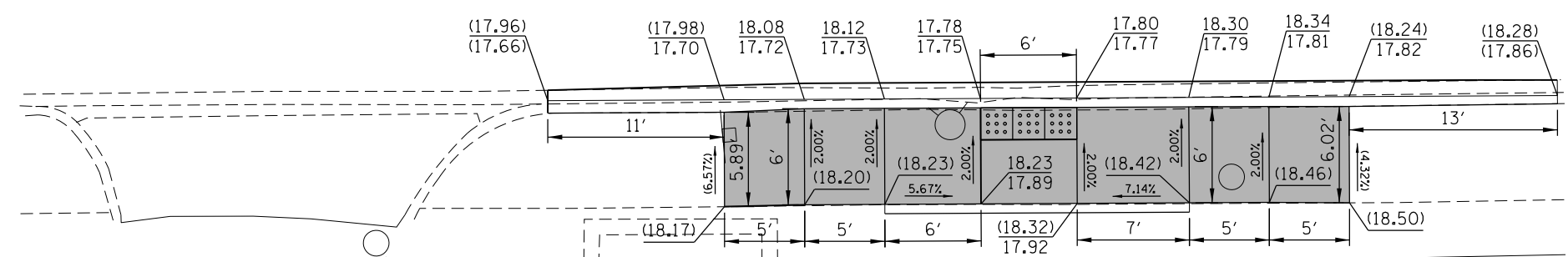
**LINCOLN AVENUE RESURFACING (FOSTER AVE TO WESTERN AVE)
ROADWAY AND PAVEMENT MARKING SHEET**

F.A.U. RTE. 3729	SECTION 2014-069RS	COUNTY COOK	TOTAL SHEETS 30	SHEET NO. 13
SCALE: SHEET 5 OF 5 SHEETS STA. TO STA.				CONTRACT NO. 62A10
ILLINOIS FED. AID PROJECT				



W. ARGYLE ST.

N. LINCOLN AVE.



LEGEND

- xx.xx' EXISTING LENGTH
- PROPOSED SIDE CURB
- () EXISTING ELEVATION/SLOPE
- PROPOSED SIDEWALK
- DETECTABLE WARNINGS
- SIDEWALK REMOVAL REPLACE W/TOPSOIL & SOD

REFERENCE BENCHMARK ELEV
BENCHMARK :
LOCATION :

REFERENCE BENCHMARK ELEV
BENCHMARK :
LOCATION :

M:\LINCOLN AVE (12-154-006)\Design\Civil\CADD Sheets\0162A10-sh1-ADA.dgn



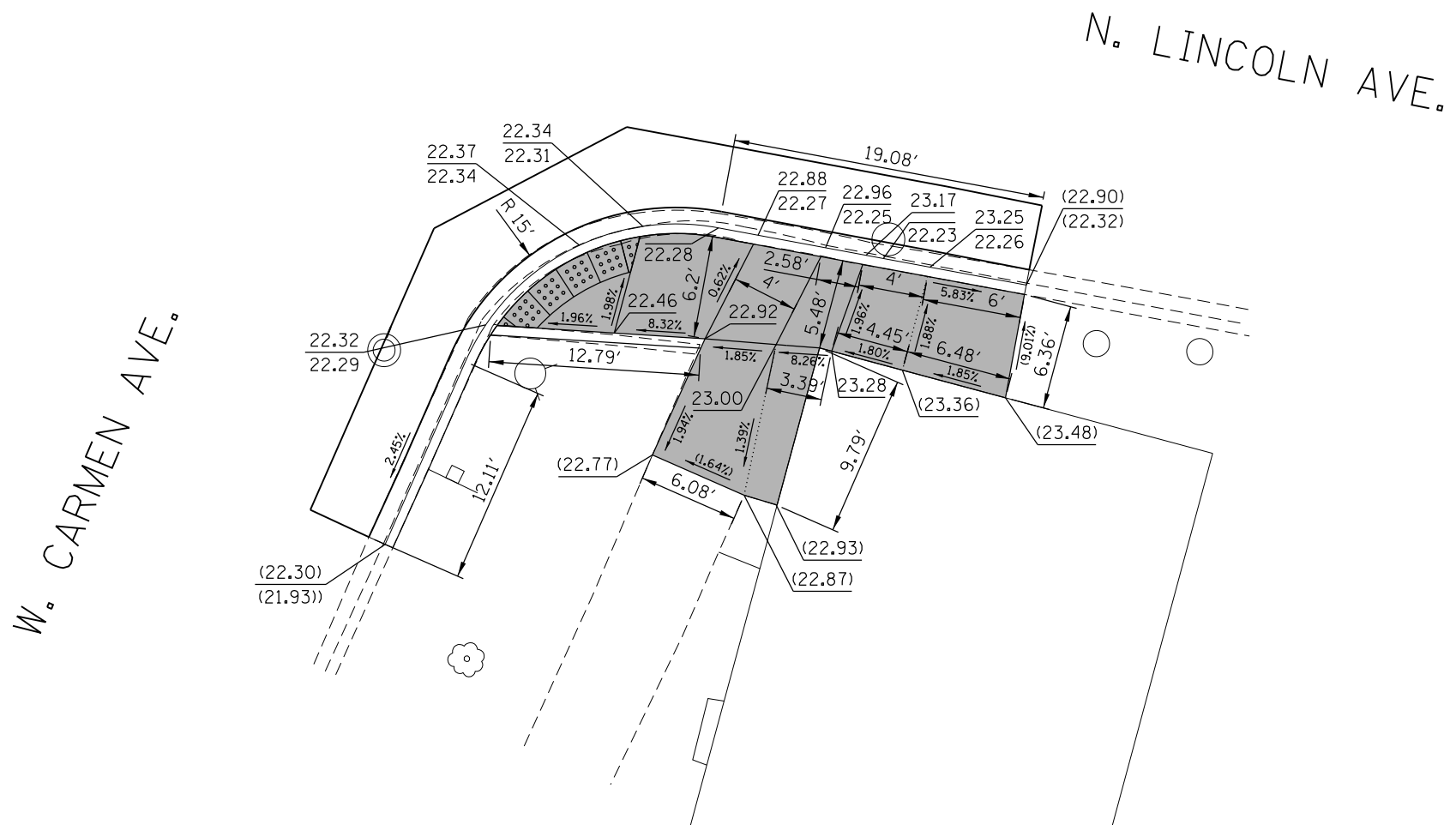
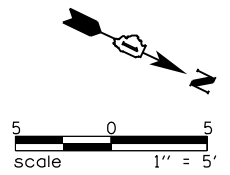
USER NAME = DavidL	DESIGNED - BB	REVISED -
	DRAWN - BB	REVISED -
PLOT SCALE =	CHECKED - DEL	REVISED -
PLOT DATE = 2/17/2017	DATE - 02/26/15	REVISED -

STATE OF ILLINOIS
DEPARTMENT OF TRANSPORTATION

LINCOLN AVENUE RESURFACING (FOSTER AVE TO WESTERN AVE)
ADA RAMP DETAILS

F.A.U. RTE. 3729	SECTION 2014-069RS	COUNTY COOK	TOTAL SHEETS 30	SHEET NO. 16
				CONTRACT NO. 62A10
ILLINOIS FED. AID PROJECT				

SCALE: SHEET 3 OF 5 SHEETS STA. TO STA.



REFERENCE BENCHMARK ELEV
 BENCHMARK :
 LOCATION :

LEGEND	
xx.xx'	EXISTING LENGTH
	PROPOSED SIDE CURB
()	EXISTING ELEVATION/SLOPE
	PROPOSED SIDEWALK
	DETECTABLE WARNINGS
	SIDEWALK REMOVAL REPLACE W/TOPSOIL & SOD

M:\LINCOLN AVE (12-154-006)\Design\Civil\CADD Sheets\0162A10-sh1-ADA-4.dgn



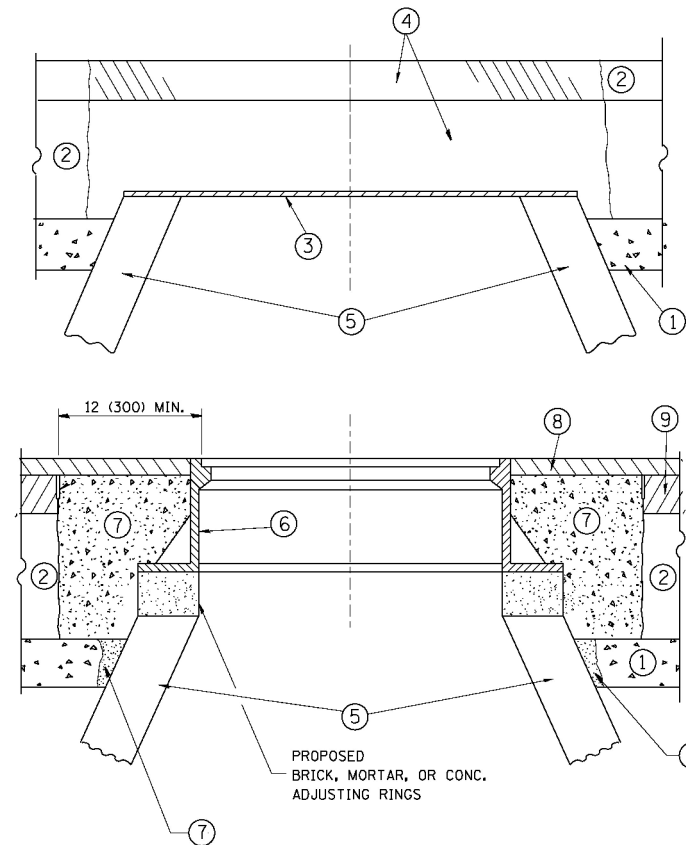
USER NAME = DavidL	DESIGNED - BB	REVISED -
	DRAWN - BB	REVISED -
PLOT SCALE =	CHECKED - DEL	REVISED -
PLOT DATE = 2/17/2017	DATE - 02/26/15	REVISED -

**STATE OF ILLINOIS
 DEPARTMENT OF TRANSPORTATION**

**LINCOLN AVENUE RESURFACING (FOSTER AVE TO WESTERN AVE)
 ADA RAMP DETAILS**

SCALE: SHEET 4 OF 5 SHEETS STA. TO STA.

F.A.U. RTE. 3729	SECTION 2014-069RS	COUNTY COOK	TOTAL SHEETS 30	SHEET NO. 17
CONTRACT NO. 62A10				ILLINOIS FED. AID PROJECT



CONSTRUCTION PROCEDURES

STAGE 1 (BEFORE PAVEMENT MILLING)

- A) REMOVE A MINIMUM OF 12 (300) OF THE PAVEMENT FROM AROUND THE STRUCTURE.
- B) REMOVE THE EXISTING FRAME AND LID FROM THE STRUCTURE.
- C) COVER THE STRUCTURE OPENING WITH A 36 (900) DIAMETER METAL PLATE.
- D) BACKFILL WITH CRUSHED STONE AND A MINIMUM 1 1/2 (40) THICK HMA SURFACE MIX APPROVED BY THE ENGINEER.

STAGE 2 (AFTER PAVEMENT MILLING)

- A) REMOVE THE HMA SURFACE MIX AND CRUSHED STONE.
- B) INSTALL THE FRAME AND LID; ADJUST THE FRAME TO ITS FINAL SURFACE ELEVATION.
- C) THE SURROUNDING SPACE SHALL BE FILLED WITH CLASS PP-1* CONCRETE TO THE ELEVATION OF THE SURFACE OF THE EXISTING BASE COURSE OR THE BINDER COURSE.

* UNLESS OTHERWISE SPECIFIED IN THE PLANS.

THE PROCEDURE EXPLAINED ABOVE SHALL CONFORM TO THE APPLICABLE PORTIONS OF SECTIONS 353, 406, 602, AND 603 OF THE STANDARD SPECIFICATIONS EXCEPT THAT "THE CONTRACTOR SHALL ADJUST THE STRUCTURES TO THE FINISHED PAVEMENT ELEVATION NO MORE THAN 5 CALENDAR DAYS PRIOR TO PLACEMENT OF THE FINAL LIFT OF SURFACE UNLESS APPROVED BY THE ENGINEER."

LEGEND

- ① SUB-BASE GRANULAR MATERIAL
- ② EXISTING PAVEMENT
- ③ 36 (900) DIAMETER METAL PLATE
- ④ PROPOSED CRUSHED STONE AND HMA SURFACE MIX
- ⑤ EXISTING STRUCTURE
- ⑥ FRAME AND LID (SEE NOTES)
- ⑦ CLASS PP-1* CONCRETE
- ⑧ PROPOSED HMA SURFACE COURSE
- ⑨ PROPOSED HMA BINDER COURSE

LOCATION OF STRUCTURES:

THE CONTRACTOR WILL BE REQUIRED TO KEEP A RECORD OF THE LOCATIONS OF THE BURIED STRUCTURES ACCORDING TO THE STATION AND DISTANCE LEFT OR RIGHT OF THE CENTERLINE OF PAVEMENT. UPON COMPLETION OF THE WORK, THE CONTRACTOR WILL DELIVER THE RECORD TO THE ENGINEER.

BASIS OF PAYMENT:

REMOVING FRAMES AND LIDS ON DRAINAGE AND UTILITY STRUCTURES IN THE PAVEMENT PRIOR TO MILLING, AND ADJUSTING TO FINAL GRADE PRIOR TO PLACING THE SURFACE COURSE, WILL BE PAID FOR AT THE CONTRACT UNIT PRICE EACH FOR "FRAMES AND LIDS TO BE ADJUSTED (SPECIAL)."

THIS WORK WILL NOT BE PAID FOR WHEN DRAINAGE AND UTILITY STRUCTURES ARE SPECIFIED FOR PAYMENT AS STRUCTURE RECONSTRUCTION.

NEW FRAMES AND LIDS, WHEN SPECIFIED, WILL BE PAID FOR SEPARATELY.

NOTES:

EXISTING BROKEN FRAMES AND LIDS SHALL BE REMOVED AND DISPOSED OF BY THE CONTRACTOR AND SHALL BE REPLACED AS DIRECTED BY THE ENGINEER. REPLACEMENT FRAMES AND LIDS WILL BE PAID FOR IN ACCORDANCE WITH ARTICLE 109.04 OF THE STANDARD SPECIFICATIONS UNLESS A SEPARATE PAY ITEM HAS BEEN PROVIDED.

IF THE EXISTING LIDS ARE OPEN, THE FRAME WILL BE ADJUSTED TO THE ELEVATION OF THE MILLED PAVEMENT SURFACE PRIOR TO THE MILLING OPERATION. THE FRAME WILL NOT BE REMOVED AND COVERED BY THE METAL PLATE.

CITY OF CHICAGO CASTINGS ARE THE PROPERTY OF THE CITY AND THE CONTRACTOR SHALL NOTIFY THE CITY FOR REMOVAL AND DISPOSITION OF THE CASTINGS.

THE METAL PLATE USED TO COVER THE STRUCTURE SHALL REMAIN THE PROPERTY OF THE CONTRACTOR.

WHEN STRUCTURES ARE TO BE ADJUSTED OR RECONSTRUCTED, THE LOWERING AND RAISING OF THE FRAMES AND LIDS WILL NOT BE PAID FOR SEPARATELY BUT WILL BE INCLUDED IN THE COST OF THE CORRESPONDING PAY ITEM.

DETAILS FOR FRAMES AND LIDS ADJUSTMENT WITH MILLING

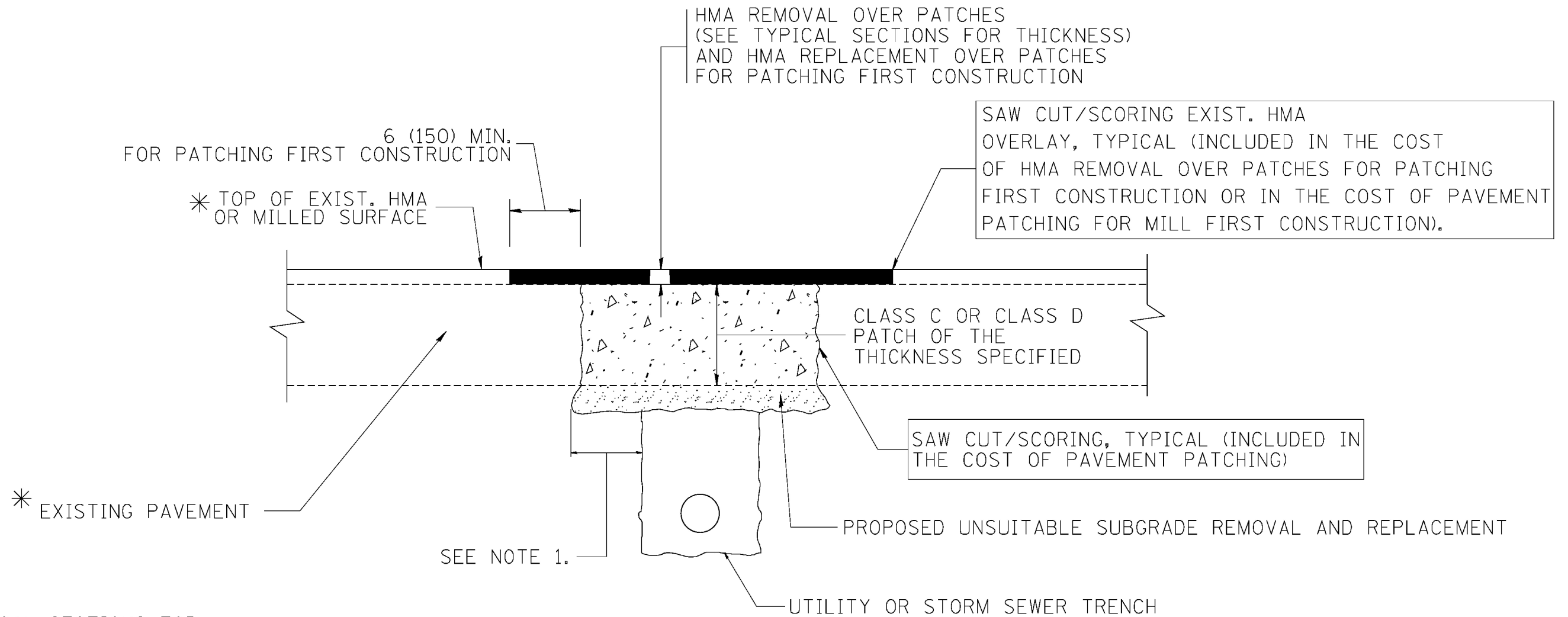
ALL DIMENSIONS ARE IN INCHES (MILLIMETERS) UNLESS OTHERWISE SHOWN

FILE NAME =	USER NAME = bauerdl	DESIGNED - R. SHAH	REVISED - R. WIEDEMAN 05-14-04
ca:\p\work\pwi.dot\baue\dl\d0108315\bd08.dgn		DRAWN -	REVISED - R. BORO 01-01-07
	PLDT SCALE = 1/64" = 1/8" / 1" = 1/8" / 1"	CHECKED -	REVISED - R. BORO 03-09-11
	PLDT DATE = 12/6/2011	DATE - 10-25-94	REVISED - R. BORO 12-06-11

**STATE OF ILLINOIS
DEPARTMENT OF TRANSPORTATION**

DETAILS FOR FRAMES AND LIDS ADJUSTMENT WITH MILLING			
SCALE: NONE	SHEET NO. 1 OF 1 SHEETS	STA.	TO STA.

F.A.U. RTE.	SECTION	COUNTY	TOTAL SHEETS	SHEET NO.
3729	2014-069RS	COOK	30	19
BD600-03 (BD-8)		CONTRACT NO. 62A10		
FED. ROAD DIST. NO. 1 ILLINOIS FED. AID PROJECT				



* SEE TYPICAL SECTIONS FOR THICKNESS AND MATERIALS

NOTES:

1. THE WIDTH OF THE FULL DEPTH PATCH OVER A TRENCH SHALL BE 12 (300) WIDER ON EACH SIDE OF THE TRENCH.
2. FOR METHOD OF MEASUREMENT AND BASIS OF PAYMENT, SEE RECURRING SPECIAL PROVISION "PATCHING WITH HOT-MIX ASPHALT OVERLAY REMOVAL".

SEQUENCE OF CONSTRUCTION (PATCHING FIRST)

1. REMOVE THE EXISTING HMA MATERIAL OVER THE AREA TO BE PATCHED.
2. REMOVE AND REPLACE WITH CLASS C OR D PATCH.
3. REPLACE HMA MATERIAL OVER THE AREA TO BE PATCHED.

SEQUENCE OF CONSTRUCTION (MILLING FIRST)

1. MILL HMA FIRST IF THERE IS AT LEAST 4 1/2 INCHES OR MORE OF HMA MATERIAL ON TOP OF THE EXISTING PAVEMENT OR IF THE PAVEMENT IS FULL DEPTH HMA. A MINIMUM OF 2 INCHES OF HMA MATERIAL SHALL BE IN PLACE AFTER MILLING.
2. REMOVE AND REPLACE WITH FULL DEPTH CLASS D PATCHES TO TOP OF MILLED SURFACE.

ALL DIMENSIONS ARE IN INCHES (MILLIMETERS) UNLESS OTHERWISE SHOWN.

FILE NAME = c:\projects\distd22x34\bd22.dgn	USER NAME = bauerdl	DESIGNED - R. SHAH	REVISED - A. ABBAS 04-27-98	STATE OF ILLINOIS DEPARTMENT OF TRANSPORTATION	PAVEMENT PATCHING FOR HMA SURFACED PAVEMENT			F.A. U. RTE.	SECTION	COUNTY	TOTAL SHEETS	SHEET NO.	
		DRAWN -	REVISED - R. BORO 01-01-07		SCALE: NONE	SHEET NO. 1 OF 1 SHEETS	STA.	TO STA.	3729	2014-069R5	COOK	30	20
		PLOT SCALE = 50.000' / IN.	REVISED - R. BORO 09-04-07						BD400-04 (BD-22)		CONTRACT NO. 62A10		
		PLOT DATE = 10/27/2008	REVISED - K. ENG 10-27-08						FED. ROAD DIST. NO. 1 ILLINOIS FED. AID PROJECT				

VARIABLE - TO MEET EXISTING DIMENSIONS AND FIELD CONDITIONS (SEE NOTE ②)

PROP. CONC. CURB OR CURB AND GUTTER REPLACEMENT IN ACCORDANCE WITH STATE STANDARD 606001. (SEE NOTE ②)

SAW CUT FULL DEPTH - INCLUDED IN THE COST OF SIDEWALK, DRIVEWAY OR MEDIAN SURFACE REMOVAL PAY ITEM.

SEE STATE STANDARD 606001
EXISTING OR PROPOSED HMA SURFACE (IF APPLICABLE)

1/4" (5) **

18" (450) MAX.

EXISTING SIDEWALK, DRIVEWAY, MEDIAN SURFACE, SOD OR GROUND.

PROPOSED SIDEWALK, DRIVEWAY PAVEMENT, MEDIAN SURFACE OR SODDING SALT TOLERANT WITH TOP SOIL, 4" (100) SOD RESTORATION (SEE NOTE ①).

EXISTING CONCRETE PAVEMENT, CONCRETE BASE COURSE OR FLEXIBLE PAVEMENT

T/2 *

3" (75) MIN.

SUITABLE BACKFILL MATERIAL (INCLUDED IN THE COST OF CURB OR CURB AND GUTTER REMOVAL AND REPLACEMENT)

* 3" (75) MINIMUM FROM TOP AND BOTTOM OF THE CONCRETE PAVEMENT OR BASE COURSE.

** IF THE FINAL SURFACE OF THE PAVEMENT IS CONCRETE, THE GUTTER IS TO BE FLUSH WITH THE PAVEMENT.

NOTE: ① SIDEWALK, DRIVEWAY PAVEMENT OR MEDIAN SURFACE SHALL BE SIMILAR TO THE MATERIAL BEING REMOVED AND WILL BE PAID FOR SEPARATELY.

SODDING, SALT TOLERANT AND TOP SOIL, FURNISH AND PLACE 4" WILL BE PAID FOR SEPARATELY.

② FERTILIZER FOR THE PLACEMENT OF THE SOD IS NOT REQUIRED

③ CURB OR CURB AND GUTTER REPLACEMENT SHALL MATCH THE SHAPE OF THE EXISTING CURB OR CURB AND GUTTER UNLESS OTHERWISE SPECIFIED.

④ FOR CURB OR CURB AND GUTTER REMOVAL AND REPLACEMENT ADJACENT TO FLEXIBLE PAVEMENT DELETE EPOXY COATED TIE BARS.

⑤ LONGITUDINAL BARS, IF ENCOUNTERED IN THE EXISTING CURB OR CURB AND GUTTER, ARE NOT TO BE REPLACED. CUTTING AND REMOVING LONGITUDINAL BARS SHALL BE INCLUDED IN THE COST OF CURB OR CURB AND GUTTER REMOVAL AND REPLACEMENT.

⑥ THE COST OF HMA SURFACE REMOVAL IN THE EXISTING GUTTER FLAG SHALL BE INCLUDED IN THE COST OF THE CURB AND GUTTER REMOVAL AND REPLACEMENT.

⑦ THE REMOVAL AND REPLACEMENT OF THE EXISTING CURB OR CURB AND GUTTER SHALL BE DONE IN ACCORDANCE WITH THE APPLICABLE PORTIONS OF SECTION 440 AND 606 OF THE STANDARD SPECIFICATIONS.

⑧ THE LOCATIONS OF REMOVAL AND REPLACEMENT OF EXISTING CURB OR CURB AND GUTTER SHALL BE DETERMINED BY THE RESIDENT ENGINEER AT THE TIME OF CONSTRUCTION.

PROPOSED 3/4" (20) PREFORMED EXPANSION JOINT AT CONCRETE SIDEWALKS, DRIVEWAYS, AND MEDIANS. (INCLUDED IN THE COST OF CURB OR CURB AND GUTTER REMOVAL AND REPLACEMENT.)

UNSUITABLE SUB-BASE MATERIAL TO BE REMOVED, IF DIRECTED BY THE ENGINEER, SHALL BE REPLACED WITH EITHER SUB-BASE GRANULAR MATERIAL, TYPE B OR ADDITIONAL THICKNESS OF CONCRETE.

REMOVAL AND REPLACEMENT 4" (100) OR LESS IS INCLUDED IN THE COST OF CURB OR CURB AND GUTTER REMOVAL AND REPLACEMENT.

REMOVAL AND REPLACEMENT IN EXCESS OF 4" (100) WILL BE PAID FOR IN ACCORDANCE WITH ARTICLE 109.04 OF THE STANDARD SPECIFICATIONS.

PROPOSED #6 (20) EPOXY COATED TIE BARS 24" (600) LONG AT 24" (600) CENTERS WILL NOT BE PAID FOR SEPARATELY. DELETE EPOXY COATED TIE BARS IF EXISTING TIE BARS ARE USABLE AS DETERMINED BY THE ENGINEER. (SEE NOTE ③).

BASIS OF PAYMENT:

THIS WORK WILL BE PAID FOR AT THE CONTRACT UNIT PRICE PER FOOT (METER) FOR "CURB REMOVAL AND REPLACEMENT" OR "COMBINATION CONCRETE CURB AND GUTTER REMOVAL AND REPLACEMENT".

CURB OR CURB AND GUTTER REMOVAL AND REPLACEMENT

ALL DIMENSIONS ARE IN INCHES (MILLIMETERS) UNLESS OTHERWISE SHOWN.

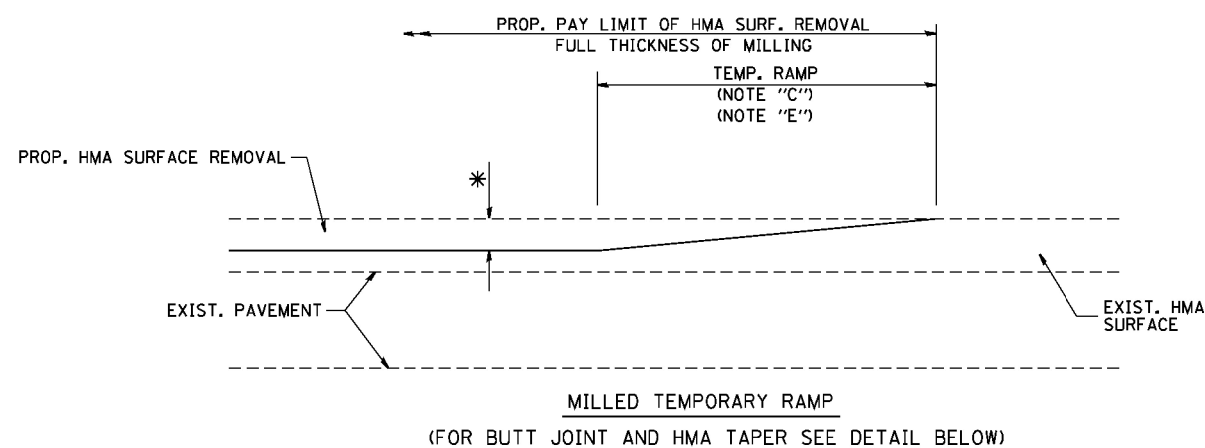
FILE NAME =	USER NAME = drivakosgn	DESIGNED - A. HOUSEH	REVISED - R. SHAH 10-03-96
ca:\pwork\pwork\drivakosgn\d0108315\bc24.dgn		DRAWN -	REVISED - A. ABBAS 03-21-97
	PLOT SCALE = 50.000' / 1 IN.	CHECKED -	REVISED - M. GOMEZ 01-22-01
	PLOT DATE = 12/15/2009	DATE - 03-11-94	REVISED - R. BORO 12-15-09

**STATE OF ILLINOIS
DEPARTMENT OF TRANSPORTATION**

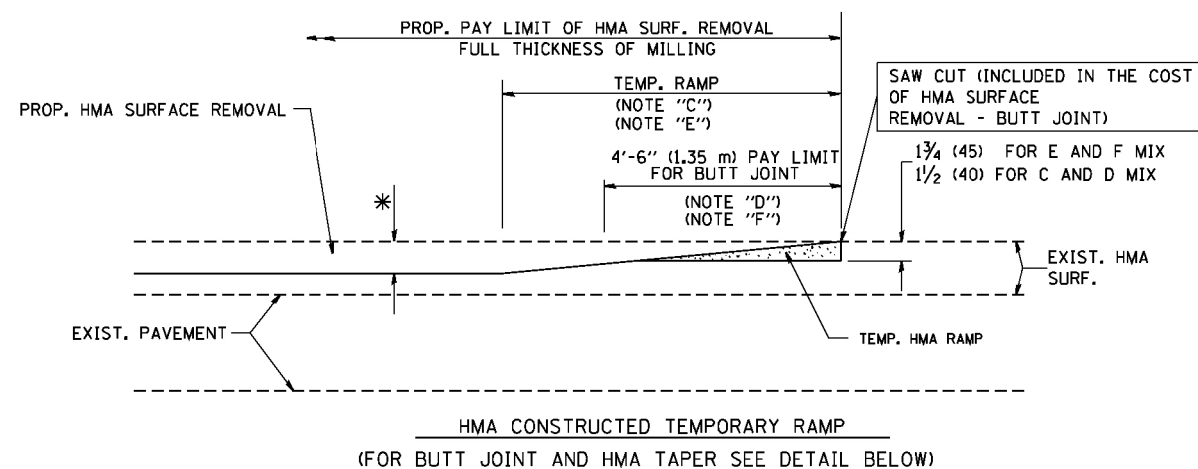
**CURB OR CURB AND GUTTER
REMOVAL AND REPLACEMENT**

SCALE: NONE SHEET NO. 1 OF 1 SHEETS STA. TO STA.

F.A.U. RTE.	SECTION	COUNTY	TOTAL SHEETS	SHEET NO.
3729	2014-069RS	COOK	30	21
BD600-06 (BD-24)		CONTRACT NO. 62A10		
FED. ROAD DIST. NO. 1 ILLINOIS FED. AID PROJECT				

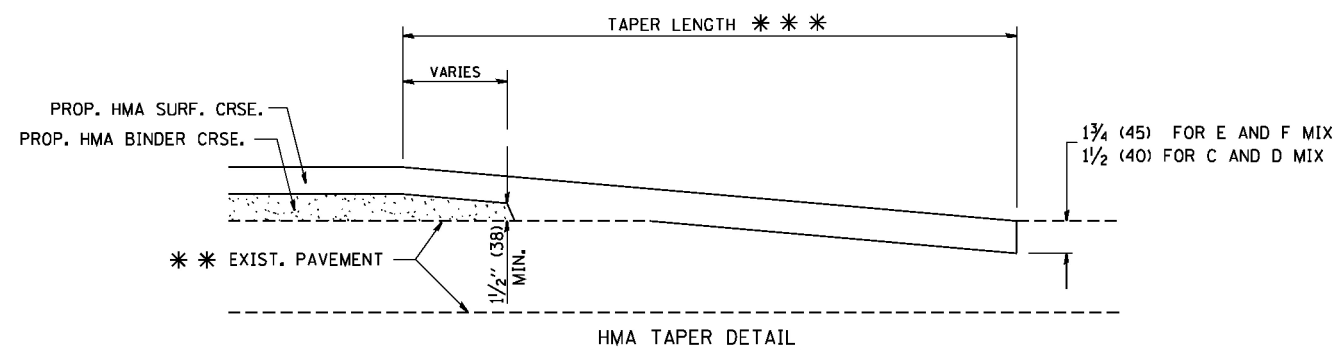
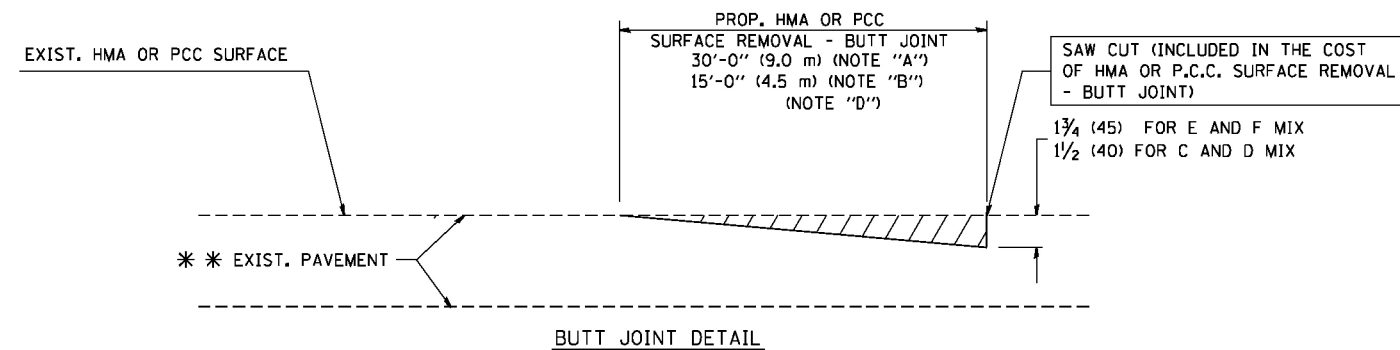


OPTION 1



OPTION 2

TYPICAL TEMPORARY RAMP



TYPICAL BUTT JOINT AND HMA TAPER FOR RESURFACING ONLY

*** PC CONCRETE, HMA OR HMA RESURFACED PAVEMENT.

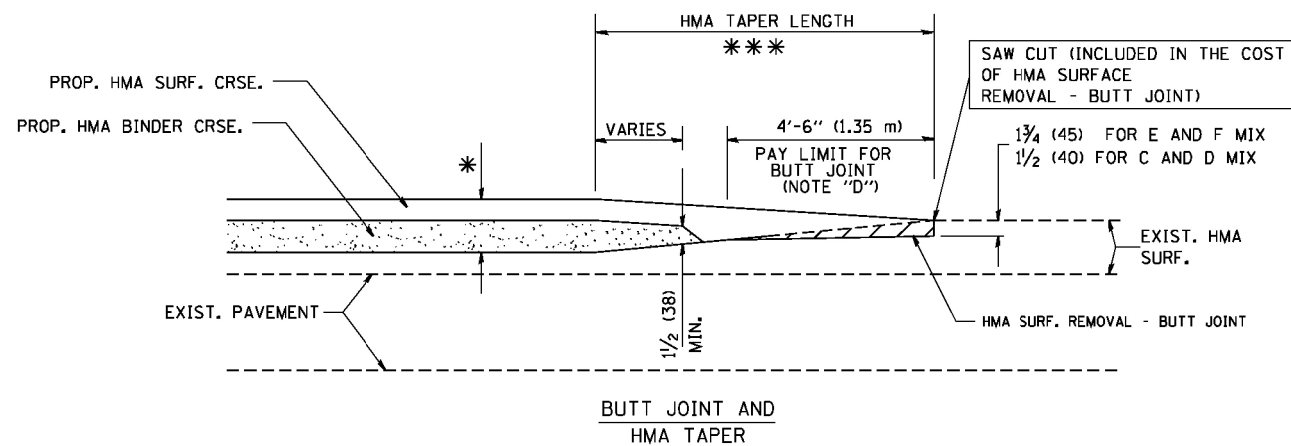
NOTES

- A: MAINLINE ROADWAYS AND MAJOR SIDE ROADS.
 - B: MINOR SIDE ROADS.
 - C: THE TEMP. RAMP SHALL BE CONSTRUCTED IMMEDIATELY UPON REMOVAL OF THE EXISTING HMA SURFACE.
 - D: THE BUTT JOINT SHALL BE CONSTRUCTED IMMEDIATELY PRIOR TO PLACING THE PROPOSED HMA COURSES.
 - E: TAPER THE TEMP. RAMP AT A RATE OF 3'-0" (900 mm) PER 1 INCH (25 mm) OF MILLING THICKNESS.
 - F: INSTALLATION AND REMOVAL OF THE 4'-6" (1.35 m) TEMP. RAMP IS INCLUDED IN COST OF HMA SURFACE REMOVAL - BUTT JOINT
 - G: SEE ARTICLE 406.08 AND 406.14 OF THE STANDARD SPECIFICATIONS FOR "HMA AND/OR PCC SURFACE REMOVAL, BUTT JOINT".
- * SEE TYPICAL SECTIONS FOR MILLING THICKNESS.
- *** 20'-0" (6.1 m) PER 1 (25) RESURFACING (NOTE "A")
10'-0" (3.0 m) PER 1 (25) RESURFACING (NOTE "B")

BASIS OF PAYMENT:

THE BUTT JOINT WILL BE PAID FOR AT THE CONTRACT UNIT PRICE PER SQUARE YARD (SQUARE METER) FOR "HOT-MIX ASPHALT SURFACE REMOVAL - BUTT JOINT" OR FOR "PORTLAND CEMENT CONCRETE SURFACE REMOVAL - BUTT JOINT".

ALL DIMENSIONS ARE IN INCHES (MILLIMETERS) UNLESS OTHERWISE SHOWN.



TYPICAL BUTT JOINT AND HMA TAPER FOR MILLING AND RESURFACING

FILE NAME = W:\diststd\22x34\bd32.dgn	USER NAME = gajlanobt	DESIGNED - M. DE YONG	REVISED - R. SHAH 10-25-94
		DRAWN -	REVISED - A. ABBAS 03-21-97
	PLOT SCALE = 50.0000' / IN.	CHECKED -	REVISED - M. GOMEZ 04-06-01
	PLOT DATE = 1/4/2008	DATE - 06-13-90	REVISED - R. BORO 01-01-07

**STATE OF ILLINOIS
DEPARTMENT OF TRANSPORTATION**

**BUTT JOINT AND
HMA TAPER DETAILS**

SCALE: NONE SHEET NO. 1 OF 1 SHEETS STA. TO STA.

F.A.U. RTE.	SECTION	COUNTY	TOTAL SHEETS	SHEET NO.
3729	2014-069RS	COOK	30	22
BD400-05 BD32		CONTRACT NO. 62A10		
FED. ROAD DIST. NO. 1 ILLINOIS FED. AID PROJECT				

TURN BAY ENTRANCE AT START OF LANE CLOSURE TAPER

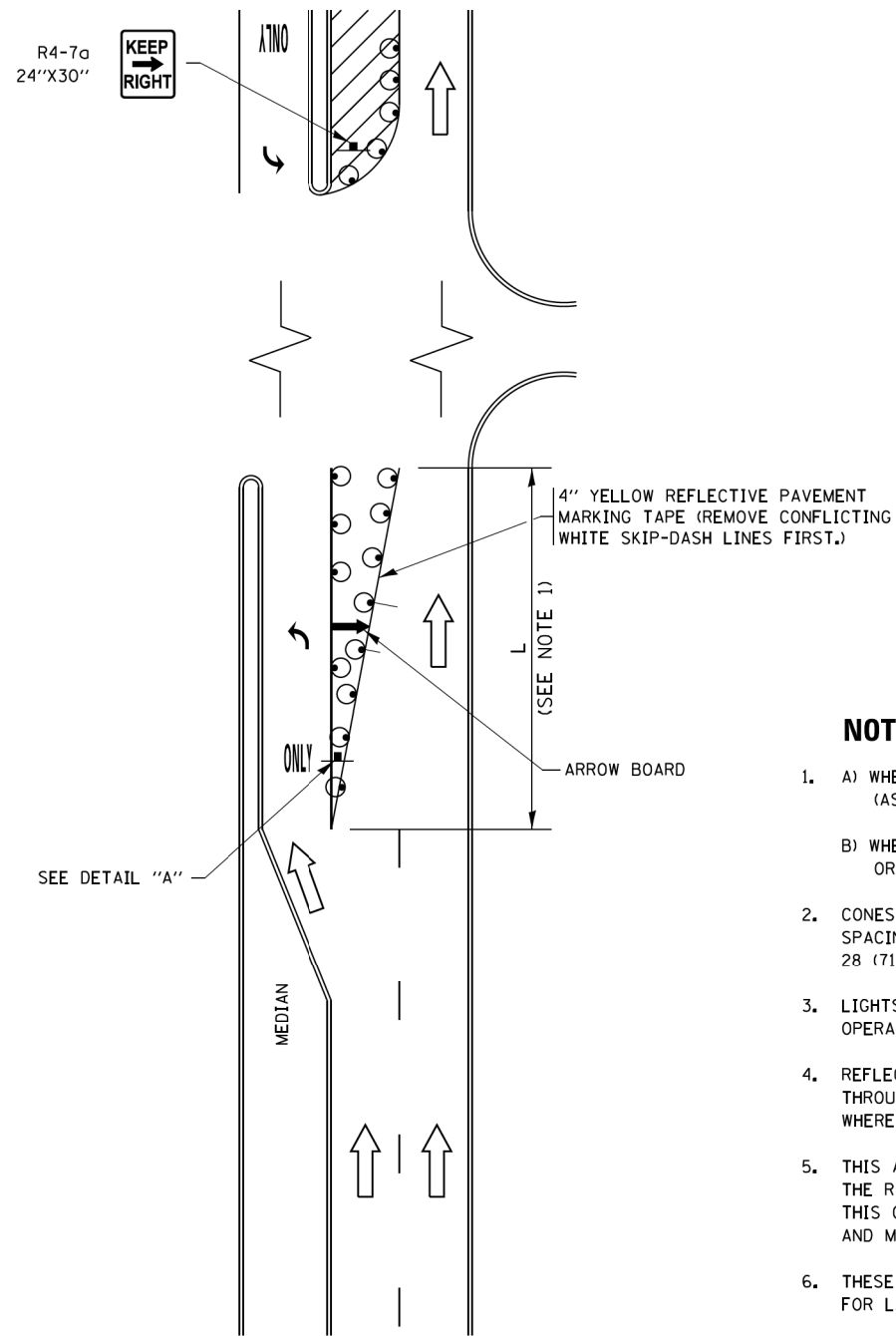


FIGURE 1

TURN BAY ENTRANCE WITHIN A LANE CLOSURE

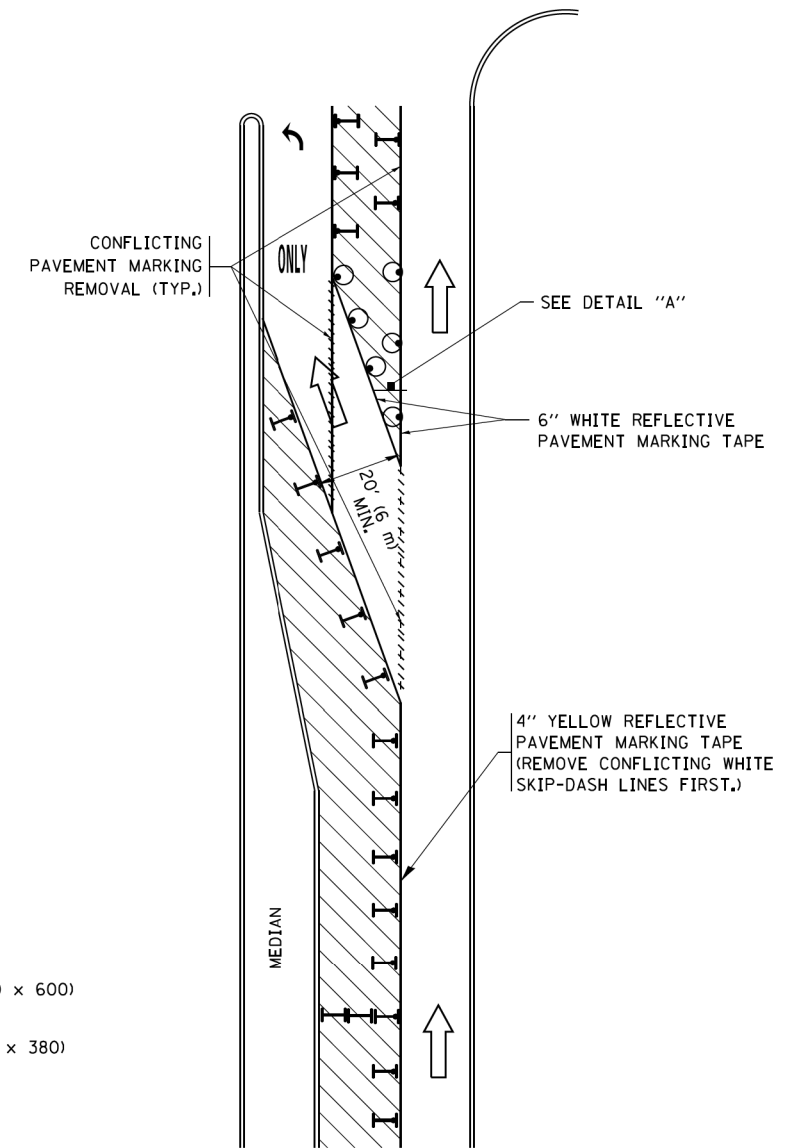









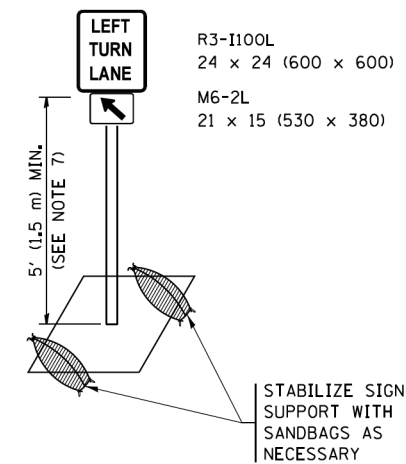
FIGURE 2

LEGEND

-  WORK AREA
-  LANE OPEN TO TRAFFIC
-  ARROW BOARD
-  TYPE I OR II BARRICADE OR DRUM WITH STEADY BURN LIGHT
-  DRUM WITH STEADY BURN LIGHT
-  SIGN ASSEMBLY
-  TYPE I OR II CHECK BARRICADE WITH FLASHING LIGHT

NOTES:

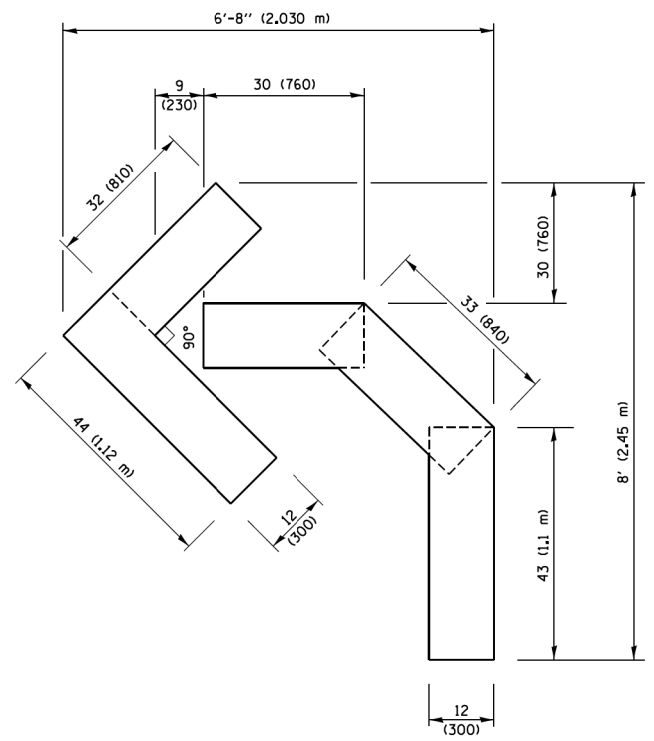
1. A) WHEN "L" IS \leq THE STORAGE LENGTH OF THE TURN LANE (AS SHOWN IN FIG. 1), USE FIGURE 1.
B) WHEN "L" IS $>$ THE STORAGE LENGTH OF THE TURN LANE OR THE TURN LANE IS WITHIN THE LANE CLOSURE, USE FIGURE 2.
2. CONES MAY BE SUBSTITUTED FOR BARRICADES OR DRUMS AT HALF THE SPACING DURING DAY OPERATIONS. CONES SHALL BE A MINIMUM OF 28 (710) IN HEIGHT.
3. LIGHTS WILL NOT BE REQUIRED ON BARRICADES OR DRUMS FOR DAY OPERATIONS. ALL LIGHTS SHALL BE MONODIRECTIONAL.
4. REFLECTIVE TEMPORARY PAVEMENT MARKINGS SHALL BE PLACED THROUGHOUT THE BARRICADED AREAS OF EACH TURN BAY AS SHOWN WHERE THE CLOSURE TIME IS GREATER THAN FOURTEEN (14) DAYS.
5. THIS APPLICATION ALSO APPLIES WHEN WORK IS BEING PERFORMED IN THE RIGHT LANE(S) AND THE RIGHT TURN BAY IS TO REMAIN OPEN. UNDER THIS CONDITION, "RIGHT TURN LANE" R3-I100R 24 x 24 (600 x 600) AND M6-2R 21 x 15 (530 x 380) SHALL BE USED.
6. THESE CONTROLS SHALL SUPPLEMENT MAINLINE TRAFFIC CONTROL FOR LANE CLOSURES.
7. THE SIGNS SHALL BE MOUNTED ABOVE THE BARRICADES/DRUMS ON SEPARATE SIGN SUPPORTS THAT MEET NCHRP 350 OR MASH PRE-REQUIREMENTS.
8. TRAFFIC CONTROL AND PROTECTION AT TURN BAYS (TO REMAIN OPEN TO TRAFFIC) SHALL BE INCLUDED IN THE COST OF SPECIFIED TRAFFIC CONTROL STANDARDS OR ITEMS.



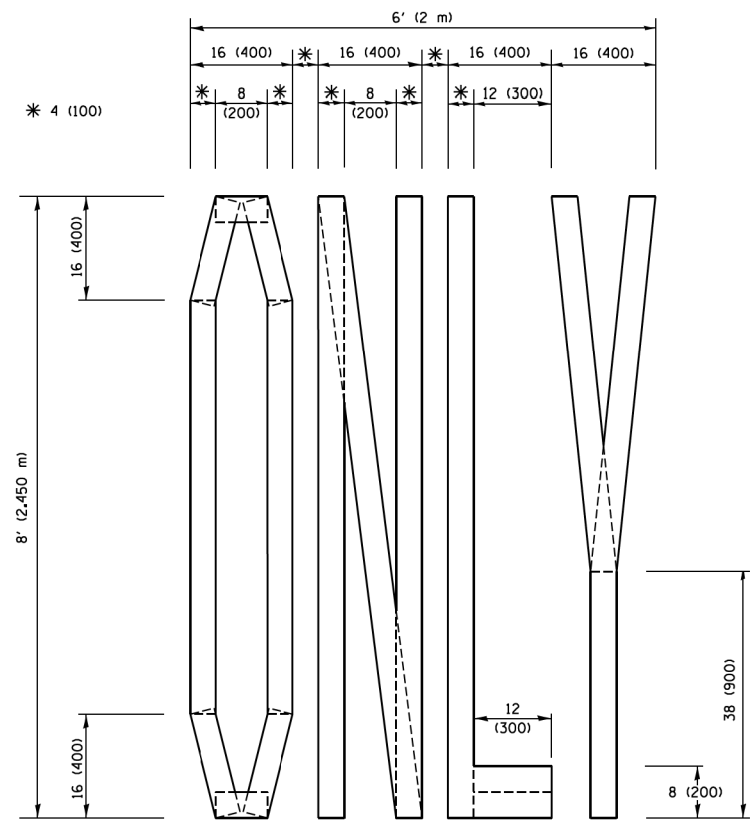
DETAIL A

All dimensions are in inches (millimeters) unless otherwise shown.

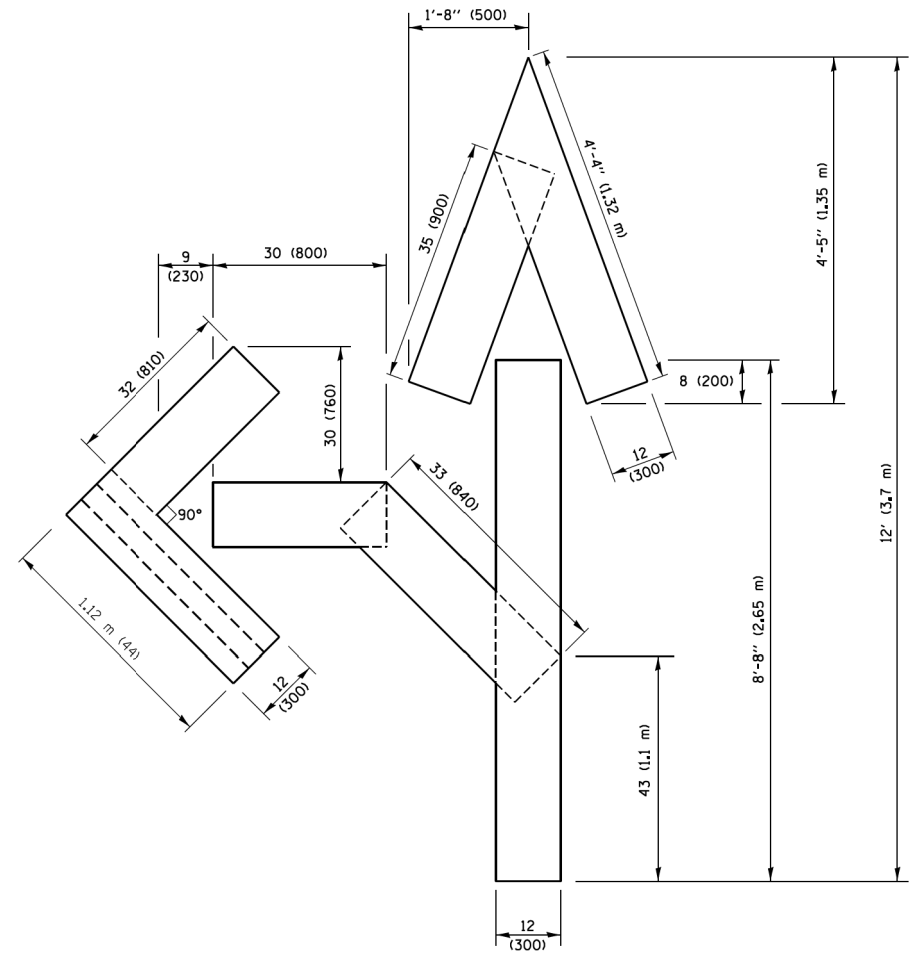
FILE NAME =	USER NAME = footemj	REVISED - T. RAMMACHER 09-08-94	REVISED - R. BORO 09-14-09	STATE OF ILLINOIS DEPARTMENT OF TRANSPORTATION	TRAFFIC CONTROL AND PROTECTION AT TURN BAYS (TO REMAIN OPEN TO TRAFFIC)			F.A.U. RTE.	SECTION	COUNTY	TOTAL SHEETS	SHEET NO.
pw\1\084EBID\INTEG\illinois.gov\FWIDOT\Documents\DOT Offices\District 1\Projects\Dist 1\REVISED\ADD\CA\HOUSEH\10-07-95	REVISED - A. HOUSEH 10-07-95	REVISED - A. SCHUETZE 07-01-13	REVISED - A. SCHUETZE 07-01-13					3729	2014-069RS	COOK	30	24
Default	PLOT SCALE = 50,0000' / 1in.	REVISED - A. HOUSEH 10-12-96	REVISED - A. SCHUETZE 09-15-16					TC-14		CONTRACT NO. 62A10		ILLINOIS FED. AID PROJECT
	PLOT DATE = 9/15/2016	REVISED - T. RAMMACHER 01-06-00	REVISED -	SCALE: NONE	SHEET 1	OF 1 SHEETS	STA.	TO STA.				



QUANTITY
 4 (100) LINE = 45.5 ft. (13.9 m)
 15.2 sq. ft. (1.41 sq. m)

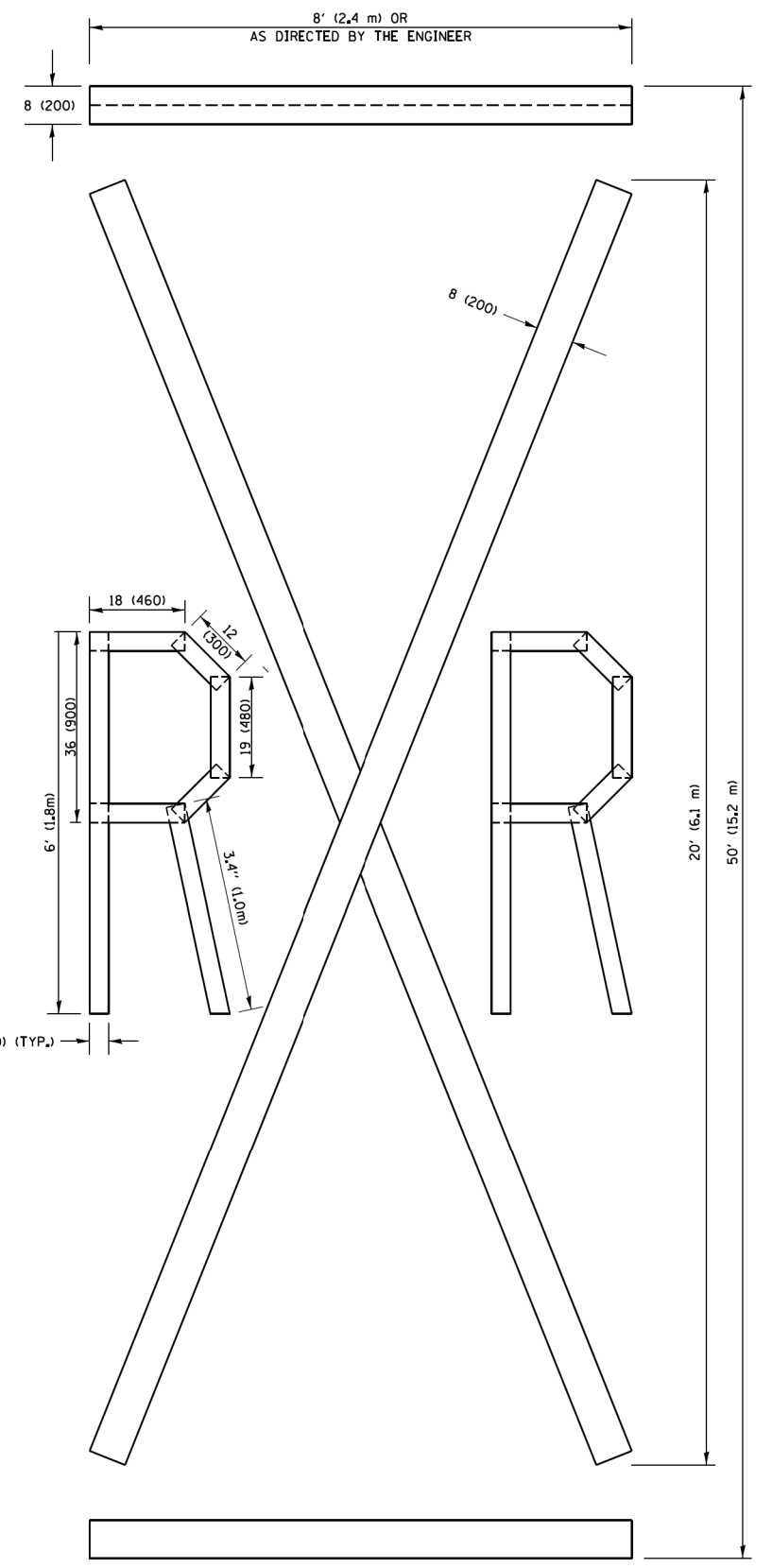


QUANTITY
 4 (100) LINE = 64.1 ft. (19.5 m)
 21.4 sq. ft. (1.99 sq. m)



QUANTITY
 4 (100) LINE = 82.5 ft. (25.1 m)
 27.5 sq. ft. (2.53 sq. m)

NOTE:
 ALL QUANTITIES OF PLACEMENT ARE REPRESENTED IN LINEAR FEET OF 4" LINES TO MATCH THE 4" TEMPORARY TAPE PAY ITEM AND REPRESENTS THE TOTAL QUANTITY OF 4" TAPE REQUIRED.



QUANTITY
 4 (100) LINE = 225.9 ft. (68.9 m)
 75.3 sq. ft. (6.99 sq. m)

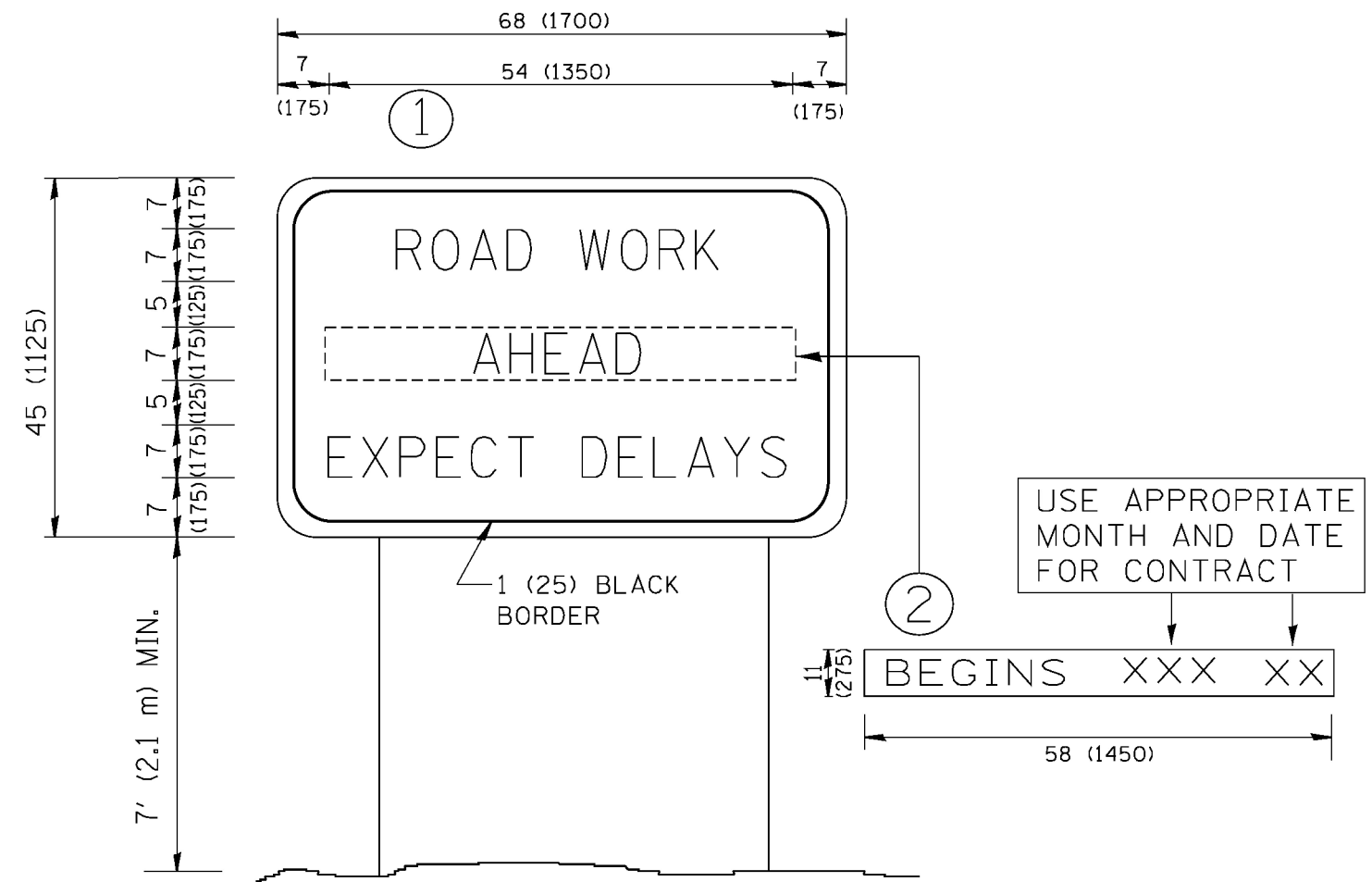
All dimensions are in inches (millimeters) unless otherwise shown.

FILE NAME =	USER NAME = footemj	DESIGNED -	REVISED - T. RAMMACHER 03-02-98
pw\1\084E81D\INTEG\illinois.gov\FWIDOT\Documents\DOT Offices\District 1\Projects\Dist 1\CADData\CADsheets\to16.dgn		DRAWN -	REVISED - E. GOMEZ 08-28-00
PLOT SCALE = 50,0000' / 1 in.		CHECKED -	REVISED - E. GOMEZ 08-28-00
PLOT DATE = 9/15/2016		DATE -	REVISED - A. SCHUETZE 09-15-16

**STATE OF ILLINOIS
 DEPARTMENT OF TRANSPORTATION**

SHORT TERM PAVEMENT MARKING LETTERS AND SYMBOLS			
SCALE: NONE	SHEET NO. 1 OF 1 SHEETS	STA.	TO STA.

F.A. ILL. RTE.	SECTION	COUNTY	TOTAL SHEETS	SHEET NO.
3729	2014-069RS	COOK	30	25
TC-16		CONTRACT NO. 62A10		
FED. ROAD DIST. NO. 1 ILLINOIS FED. AID PROJECT				

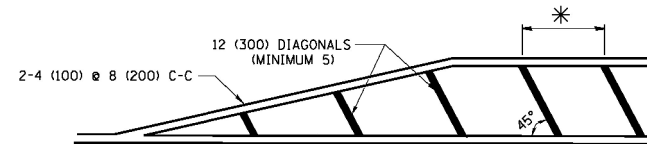
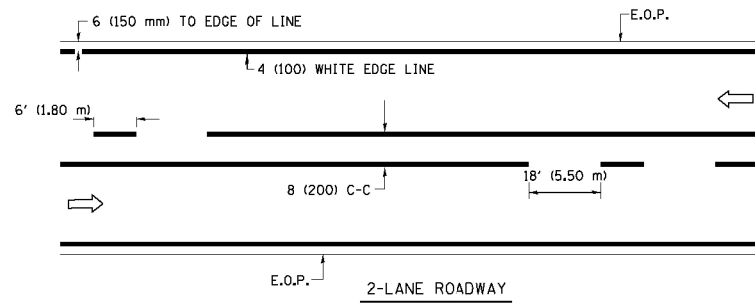


NOTES:

1. USE BLACK LETTERING ON ORANGE BACKGROUND.
2. ERECT SIGNS IN ADVANCE OF THE LOCATION FOR THE "ROAD CONSTRUCTION AHEAD" SIGN AT LOCATIONS AS DIRECTED BY THE ENGINEER.
3. ERECT SIGN ① WITH INSTALLED PANEL ② ONE WEEK PRIOR TO THE START OF CONSTRUCTION.
4. REMOVE PANEL ② SOON AFTER THE START OF CONSTRUCTION.
5. SEE SPECIAL PROVISION FOR "TEMPORARY INFORMATION SIGNING" FOR ADDITIONAL INFORMATION.
6. ONE SIGN ASSEMBLY EQUALS 25.70 SQ. FT. (2.3 SQ. M.)
7. SHALL BE PAID FOR AS TEMPORARY INFORMATION SIGNING.

ALL DIMENSIONS ARE IN INCHES (MILLIMETERS) UNLESS OTHERWISE SHOWN.

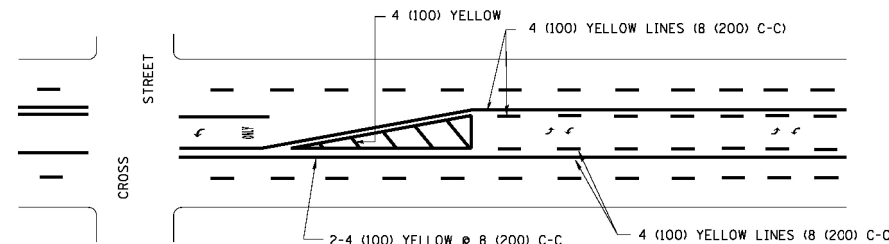
FILE NAME = W:\distatd\22x34\tc22.dgn	USER NAME = geglanoht	DESIGNED -	REVISED - R. MIRS 09-15-97	STATE OF ILLINOIS DEPARTMENT OF TRANSPORTATION	ARTERIAL ROAD INFORMATION SIGN		F.A.U. RTE.	SECTION	COUNTY	TOTAL SHEETS	SHEET NO.	
		DRAWN -	REVISED - R. MIRS 12-11-97		SCALE: NONE	SHEET NO. 1 OF 1 SHEETS	STA.	TO STA.	3729	2014-069RS	COOK	30 26
		PLOT SCALE = 50.000' / IN.	CHECKED -		REVISED - T. RAMMACHER 02-02-99			TC-22		CONTRACT NO. 62A10		
		PLOT DATE = 1/4/2008	DATE -		REVISED - C. JUCIUS 01-31-07	<small>FED. ROAD DIST. NO. 1 ILLINOIS FED. AID PROJECT</small>						



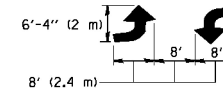
* FOR MEDIAN LENGTHS WHERE DIAGONAL SPACING CANNOT BE ATTAINED, USE 5 (FIVE) EQUALLY SPACED DIAGONAL LINES.

* DIAGONAL LINE SPACING: 20' (6.1 m) C-C

PAINTED MEDIANS

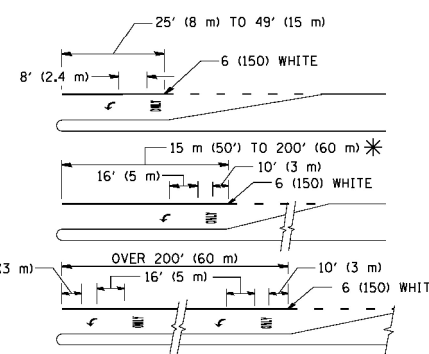
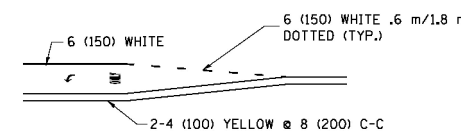


A MINIMUM OF TWO PAIRS OF TURN ARROWS SHALL BE USED, WHITE IN COLOR. ADDITIONAL PAIRS SHALL BE PLACED AT 200' (60 m) TO 300' (90 m) INTERVALS.



MEDIAN WITH TWO-WAY LEFT TURN LANE

TYPICAL PAINTED MEDIAN MARKING

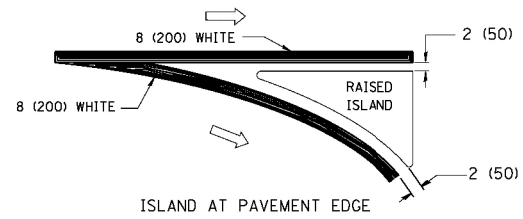
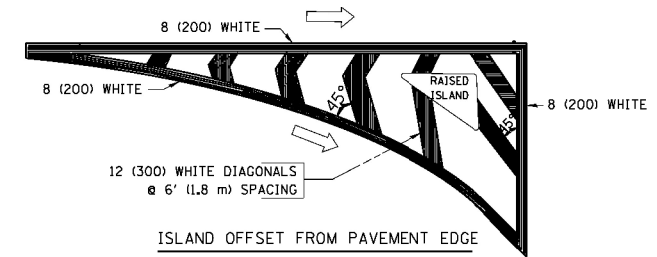


FULL SIZE LETTERS 8' (2.4 m) AND ARROWS SHALL BE USED. AREA = 15.8 SQ. FT. (1.47 m²) ONLY AREA = 22.9 SQ. FT. (2.13 m²)

* TURN LANES IN EXCESS OF 400' (120 m) IN LENGTH MAY HAVE AN ADDITIONAL SET OF ARROW - "ONLY" INSTALLED MIDWAY BETWEEN THE OTHER TWO SETS OF ARROW - "ONLY".

TYPICAL LEFT (OR RIGHT) TURN LANE

TYPICAL TURN LANE MARKING

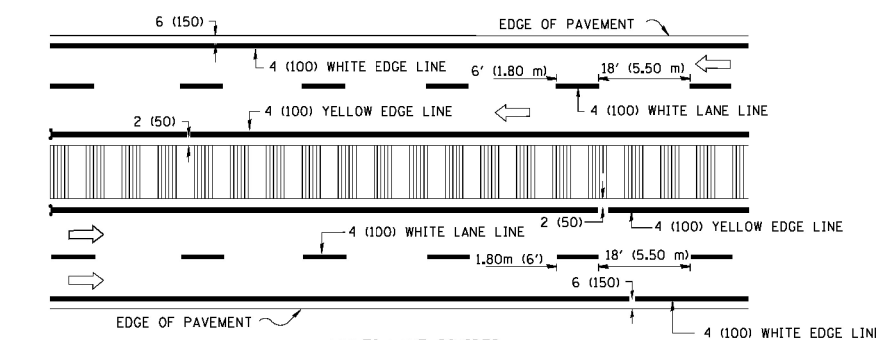
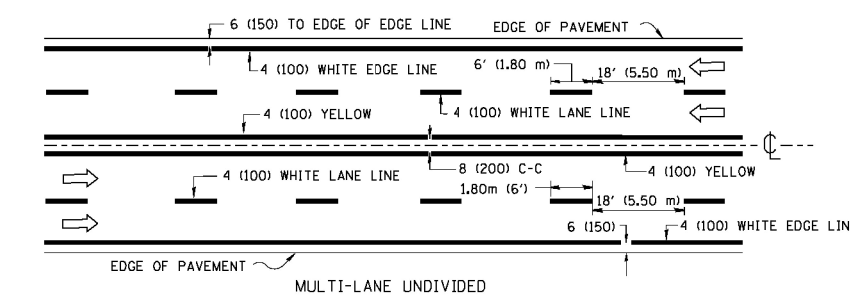


TYPICAL ISLAND MARKING

TYPE OF MARKING	WIDTH OF LINE	PATTERN	COLOR	SPACING / REMARKS
CENTERLINE ON 2 LANE PAVEMENT	4 (100)	SKIP-DASH	YELLOW	6' (1.80 m) LINE WITH 18' (5.50 m) SPACE
CENTERLINE ON MULTI-LANE UNDIVIDED PAVEMENT	2 @ 4 (100)	SOLID	YELLOW	8 (200) C-C
NO PASSING ZONE LINES: FOR ONE DIRECTION FOR BOTH DIRECTIONS	4 (100) 2 @ 4 (100)	SOLID SOLID	YELLOW YELLOW	8 (200) C-C
LANE LINES	4 (100) 5 (125) ON FREEWAYS	SKIP-DASH SKIP-DASH	WHITE WHITE	6' (1.80 m) LINE WITH 18' (5.50 m) SPACE
DOTTED LINES (EXTENSIONS OF CENTER, LANE OR TURN LANE MARKINGS)	SAME AS LINE BEING EXTENDED	SKIP-DASH	SAME AS LINE BEING EXTENDED	2' (600) LINE WITH 6' (1.8) SPACE
EDGE LINES	4 (100)	SOLID	YELLOW-LEFT WHITE-RIGHT	OUTLINE MOUNTABLE MEDIANS IN YELLOW; EDGE LINES ARE NOT USED NEXT TO BARRIER CURB
TURN LANE MARKINGS	6 (150) LINE; FULL SIZE LETTERS & SYMBOLS (8' (2.4 m))	SOLID	WHITE	SEE TYPICAL TURN LANE MARKING DETAIL
TWO WAY LEFT TURN MARKING	2 @ 4 (100) EACH DIRECTION 8' (2.4 m) LEFT ARROW	SKIP-DASH AND SOLID IN PAIRS	YELLOW WHITE	6' (1.8 m) LINE WITH 18' (5.50 m) SPACE FOR SKIP-DASH; 8 (200) C-C BETWEEN SOLID LINE AND SKIP-DASH LINE SEE TYPICAL TWO-WAY LEFT TURN MARKING DETAIL
CROSSWALK LINES A. DIAGONALS (BIKE & EQUESTRIAN) B. LONGITUDINAL BARS (SCHOOL & PEDESTRIAN)	12 (300) @ 45° 24 (600) @ 90°	SOLID SOLID	WHITE WHITE	2' (600) APART 2' (600) APART SEE TYPICAL CROSSWALK MARKING DETAILS.
STOP LINES	24 (600)	SOLID	WHITE	PLACE 4' (1.2 m) IN ADVANCE OF AND PARALLEL TO CROSSWALK, IF PRESENT. OTHERWISE, PLACE AT DESIRED STOPPING POINT, PARALLEL TO CROSSROAD CENTERLINE, WHERE POSSIBLE
PAINTED MEDIANS	2 @ 4 (100) WITH 12 (300) DIAGONALS @ 45°	SOLID	YELLOW: TWO WAY TRAFFIC WHITE: ONE WAY TRAFFIC	8 (200) C-C FOR THE DOUBLE LINE SEE TYPICAL PAINTED MEDIAN MARKING.
GORE MARKING AND CHANNELIZING LINES	8 (200) WITH 12 (300) DIAGONALS @ 45°	SOLID	WHITE	DIAGONALS: 20' (6.1 m) (LESS THAN 30 MPH (50 km/h))
RAILROAD CROSSING	24 (600) TRANSVERSE LINES; "RR" 15 6' (1.8 m) LETTERS; 16 (400) LINE FOR "X"	SOLID	WHITE	SEE STATE STANDARD 780001 AREA OF: "R"=3.6 SQ. FT. (0.33m ²) EACH "X"=54.0 SQ. FT. (5.0 m ²)

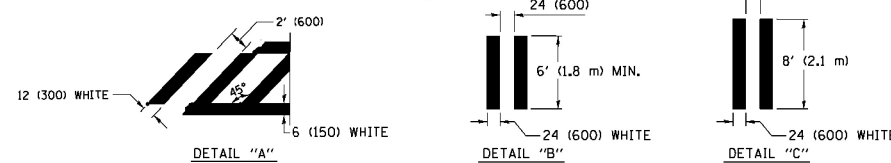
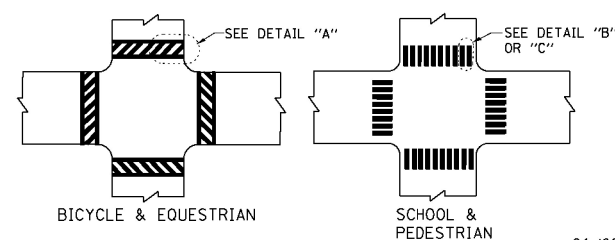
FOR FURTHER DETAILS ON PAVEMENT MARKING REFER TO STREET MARKING STANDARDS, PRINTED BY CITY OF CHICAGO, DEPARTMENT OF TRANSPORTATION, BUREAU OF TRAFFIC.

ALL DIMENSIONS ARE IN INCHES (MILLIMETERS) UNLESS OTHERWISE SHOWN.



NOTE: MEDIANS WITH BARRIER CURB DO NOT REQUIRE AN EDGE LINE

TYPICAL LANE AND EDGE LINE MARKING



TYPICAL CROSSWALK MARKING

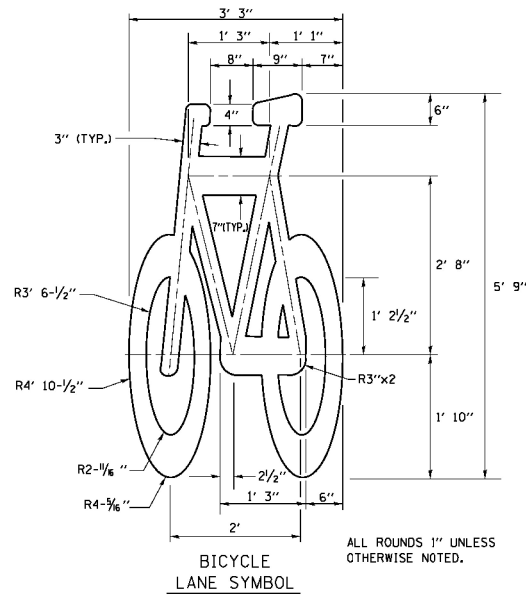
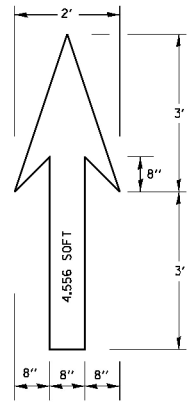
FILE NAME =	USER NAME = drsvkosgn	DESIGNED -	REVISED - T. RAMMACHER 12-07-00
ca:\p\work\p\dot\drsvkosgn\d0108315\tp24.dgn		DRAWN -	REVISED - K. ENG 02-28-12
	PLDT SCALE = 50.000' / in.	CHECKED -	REVISED -
	PLDT DATE = 3/1/2012	DATE -	REVISED -

STATE OF ILLINOIS
DEPARTMENT OF TRANSPORTATION

CITY OF CHICAGO
TYPICAL PAVEMENT MARKINGS

SCALE: NONE SHEET NO. 1 OF 3 SHEETS STA. TO STA.

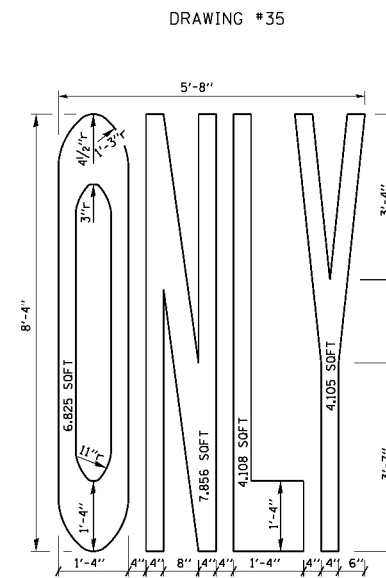
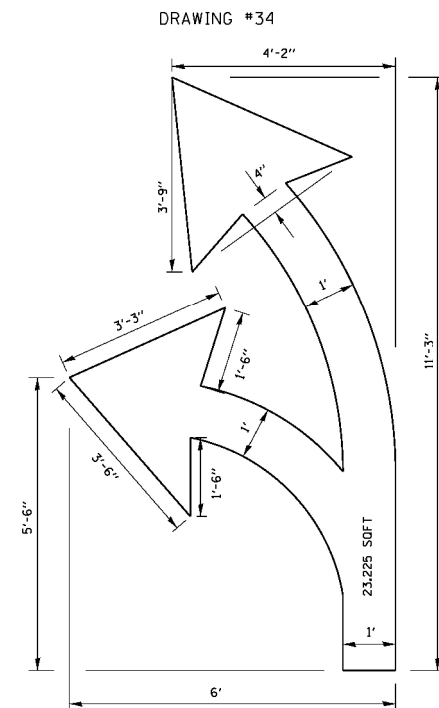
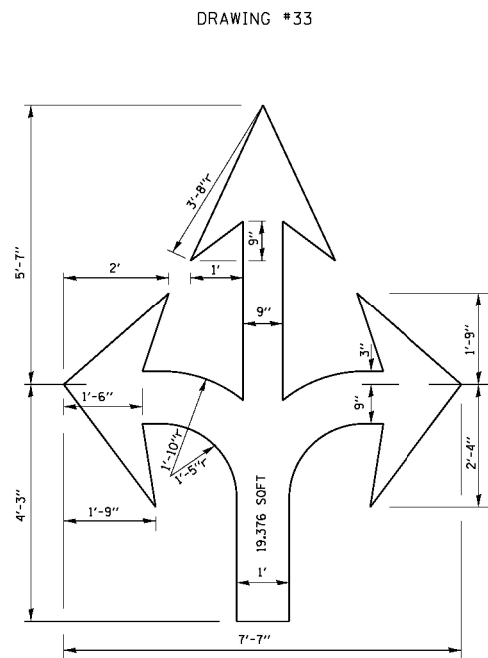
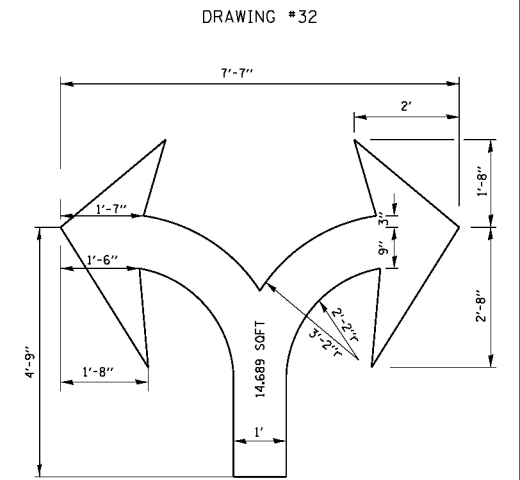
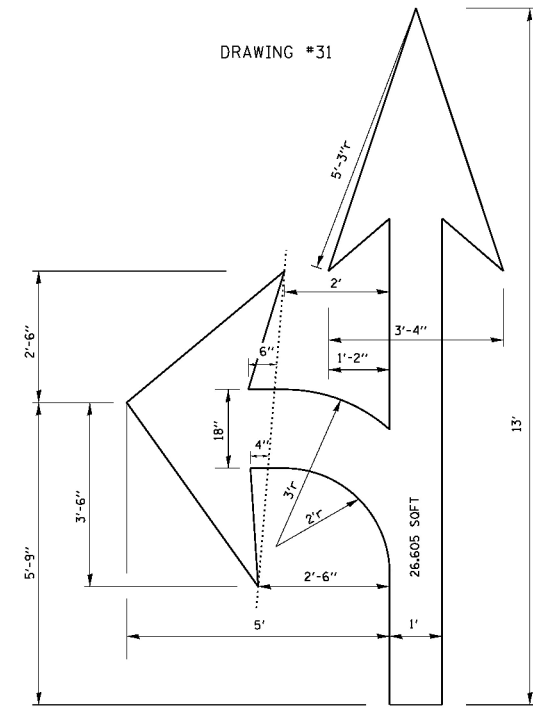
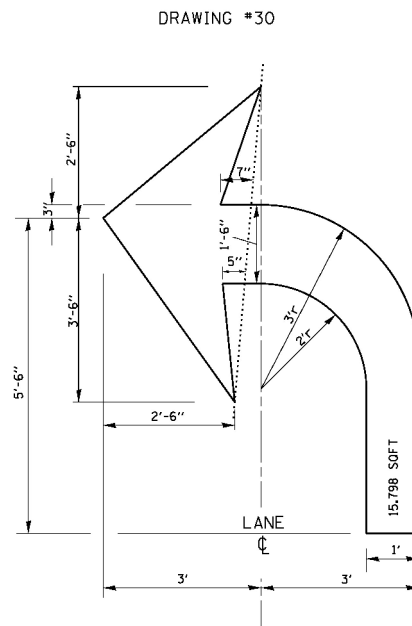
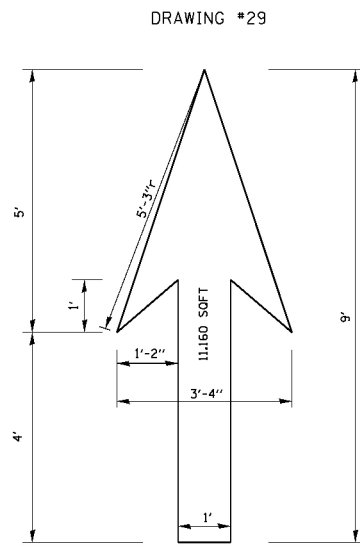
F.A.U. RTE.	SECTION	COUNTY	TOTAL SHEETS	SHEET NO.
3729	2014-069RS	COOK	30	27
TC-24		CONTRACT NO. 62A10		
FED. ROAD DIST. NO. 1 ILLINOIS FED. AID PROJECT				



NOTE:

- 1.) FOR BIKE LANE SYMBOLS ONLY, USE PRE-FORMED THERMOPLASTIC WITH A MINIMUM THICKNESS OF 90 MILS, MINIMUM SKID RESISTANCE VALUE OF 60 BPN, & A MINIMUM INDEX OF REFRACTION OF 1.50.
- 2.) THE RESIDENT ENGINEER SHALL CONTACT MR. BEN GOMBERG AT 312-744-8093 AT LEAST ONE CALENDAR WEEK PRIOR TO INSTALLING BIKE LANE SYMBOLS.

TYPICAL BIKE LANE SYMBOLS
DRAWING #28



NOTE:
ALL MARKINGS SHALL BE SOLID WHITE UNLESS OTHERWISE NOTED IN THE PLANS

M:\LINCOLN AVE (12-154-006)\Design\Civil\NCADD Sheets\0162A10-shd-details.10.dgn



USER NAME = DaviDL
DRAWN -
PLOT SCALE =
PLOT DATE = 2/17/2017

DESIGNED -
DRAWN -
CHECKED -
DATE - 02/26/15

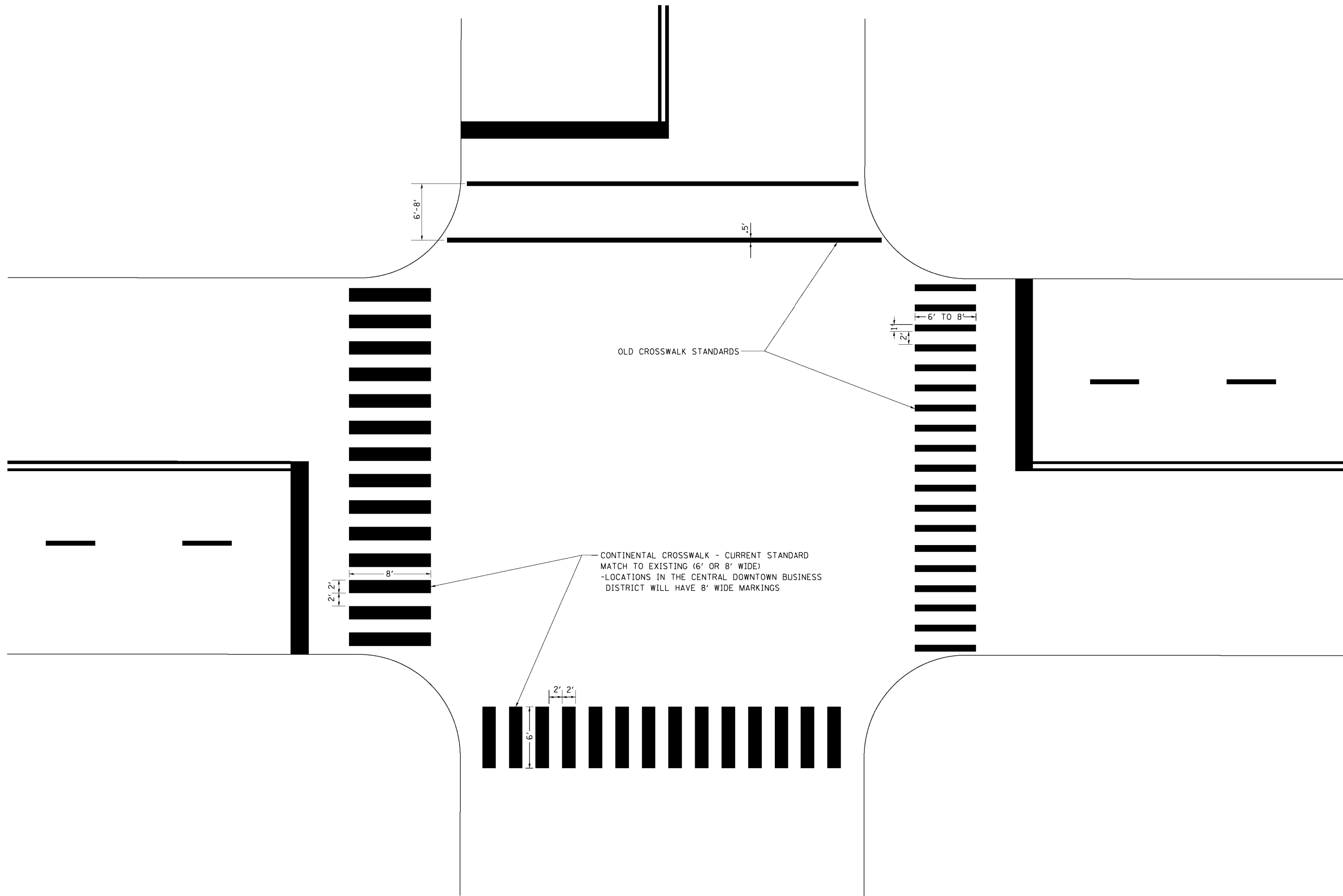
REVISED -
REVISED -
REVISED -
REVISED -

STATE OF ILLINOIS
DEPARTMENT OF TRANSPORTATION

LINCOLN AVENUE RESURFACING (FOSTER AVE TO WESTERN AVE)

SCALE: SHEET OF SHEETS STA. TO STA.

F.A.U. RTE.	SECTION	COUNTY	TOTAL SHEETS	SHEET NO.
3729	2014-069R5	COOK	30	28
CONTRACT NO. 62010			ILLINOIS FED. AID PROJECT	



OLD CROSSWALK STANDARDS

CONTINENTAL CROSSWALK - CURRENT STANDARD
 MATCH TO EXISTING (6' OR 8' WIDE)
 -LOCATIONS IN THE CENTRAL DOWNTOWN BUSINESS
 DISTRICT WILL HAVE 8' WIDE MARKINGS

FILE NAME =	USER NAME = drivakosgn	DESIGNED -	REVISED - T. RAMMACHER 12-07-00
c:\pwork\pwork\drivakosgn\d0106315\tp24.dgn		DRAWN -	REVISED - K. ENG 02-28-12
	PLLOT SCALE = 50.000' / in.	CHECKED -	REVISED -
	PLLOT DATE = 3/29/2012	DATE -	REVISED -

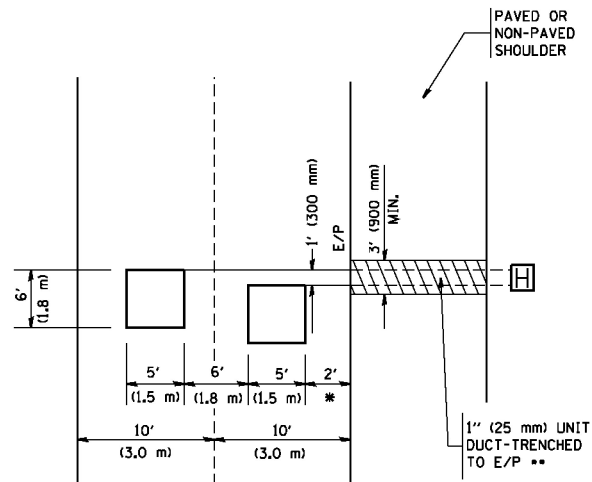
**STATE OF ILLINOIS
 DEPARTMENT OF TRANSPORTATION**

CITY OF CHICAGO			
TYPICAL PAVEMENT MARKINGS			
SCALE: NONE	SHEET NO. 3	OF 3 SHEETS	STA. TO STA.

F.A.U. RTE.	SECTION	COUNTY	TOTAL SHEETS	SHEET NO.
3729	2014-069RS	COOK	30	29
TC-24		CONTRACT NO. 62A10		
<small>FED. ROAD DIST. NO. 1 ILLINOIS FED. AID PROJECT</small>				

LOOPS NEXT TO SHOULDERS

PROVIDE A PAVEMENT REPLACEMENT NOTE WHICH SHOULD EQUAL 3' (900 mm) X WIDTH OF PAVED SHOULDER.



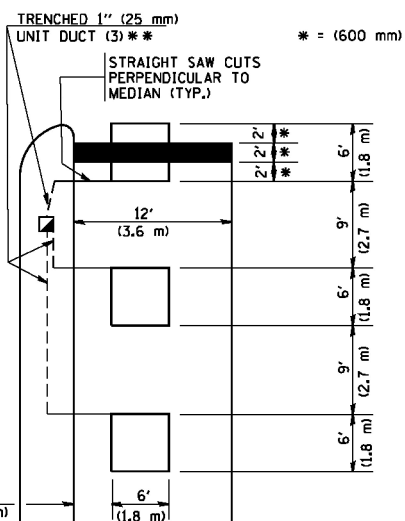
* = (600 mm)

** UNIT DUCT IS TO BE SHOWN ON PLAN SHEETS BUT SHALL NOT BE INCLUDED IN THE PAY ITEMS.

**LEFT TURN LANES WITH MEDIANS
VOLUME DENSITY ("FAR OUT" DETECTION)
ON SAME APPROACH**

(PROTECTED / PERMITTED LEFT TURN PHASING)

HANDHOLE LOCATION MAY VARY DEPENDING ON GEOMETRICS AND DESIGN OF TRAFFIC SIGNALS. HEAVY-DUTY HANDHOLES TO BE USED WHEN THE MEDIAN IS MOUNTABLE. REFER TO STANDARD 814001 TO ENSURE THAT HANDHOLE FITS IN MEDIAN.

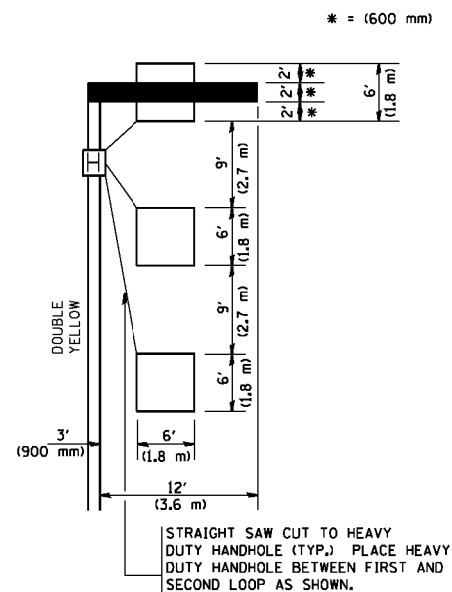


** UNIT DUCT IS TO BE SHOWN ON PLAN SHEETS BUT SHALL NOT BE INCLUDED IN THE PAY ITEMS.

NOTE: DUAL LEFT TURNS NOT SHOWN REFER TO PLAN SHEET FOR DETECTOR LOOP REPLACEMENT

**LEFT TURN LANES WITHOUT MEDIANS
VOLUME DENSITY ("FAR OUT" DETECTION)
ON SAME APPROACH**

(PROTECTED / PERMITTED LEFT TURN PHASING)



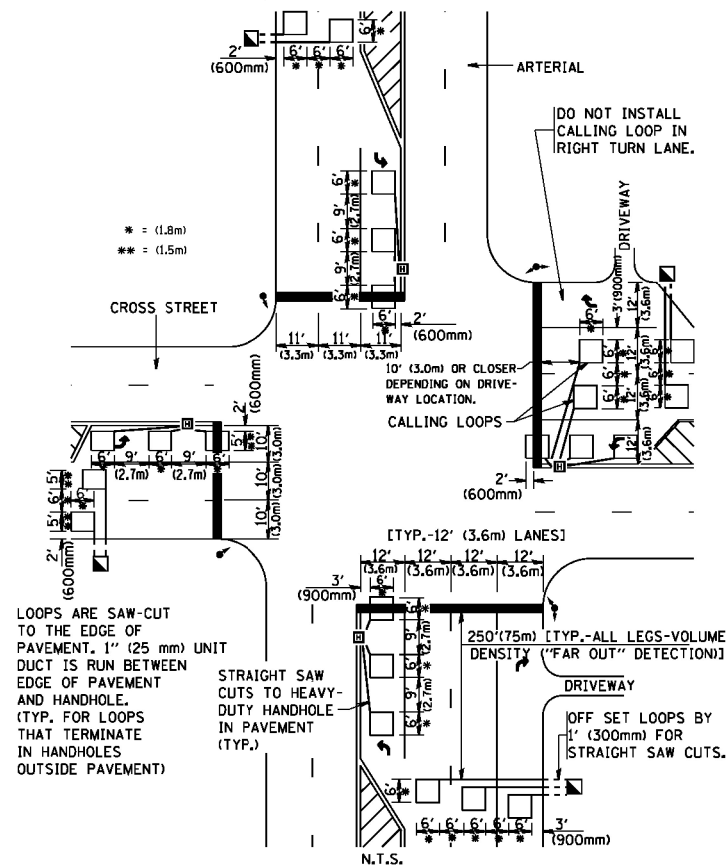
NOTE: DUAL LEFT TURNS NOT SHOWN REFER TO PLAN SHEET FOR DETECTOR LOOP REPLACEMENT

NOTES:

VEHICLES LOOP DETECTORS

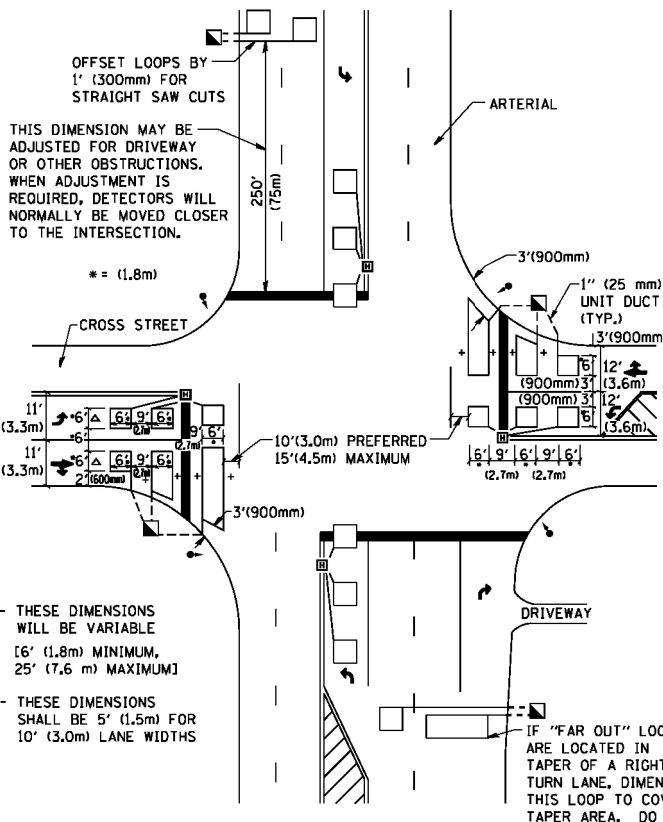
- * ALL LEAD IN CABLE SHALL BE TWO CONDUCTOR NO. 14 TWISTED, SHIELDED.
- * EACH DETECTOR LOOP SHALL HAVE ITS OWN SAW CUT FROM THE LOOP TO THE EDGE OF PAVEMENT OR TO A HANDHOLE IN THE PAVEMENT.
- * EACH DETECTOR LOOP SHALL HAVE ITS OWN ONE INCH (25 mm) UNIT DUCT BETWEEN THE EDGE OF PAVEMENT AND THE FIRST HANDHOLE OR JUNCTION BOX. EACH UNIT DUCT RUN SHALL BE SHOWN ON THE PLANS BY THE DESIGNER, BUT SHALL NOT BE PAID FOR SEPARATELY. THIS ITEM IS INCIDENTAL TO THE PAY ITEM FOR DETECTOR LOOPS.
- * ONE DIMENSION OF ALL DETECTOR LOOPS SHALL BE SIX FEET (1.8 m)
- * EACH LANE OF NON-LOCKING, PRESENCE DETECTION AND EACH LANE OF A DOUBLE LEFT TURN LANE REQUIRES A SEPARATE INDUCTIVE LOOP DETECTOR AND LEAD IN CABLE.
- * WHEN NON-LOCKING, PRESENCE DETECTION IS USED, MORE THAN ONE LOOP PER LANE IS REQUIRED BEHIND THE STOP BAR (i.e. 1-1/2, 1-3/4, 2).
- * WHEN SYSTEM LOOPS ARE REQUIRED ON AN APPROACH OF AN INTERSECTION, THE LOOPS USED FOR VOLUME DENSITY AND INTERSECTION TIMING SHALL ALSO BE USED AS SYSTEM DETECTORS. EACH ONE OF THESE TYPE OF LOOPS REQUIRES A SEPARATE TWO CONDUCTOR NO. 14 TWISTED SHIELDED CABLE AND A SEPARATE INDUCTIVE LOOP DETECTOR WHEN NEW CONTROLLERS ARE UTILIZED. THE DESIGNER SHALL LABEL THESE TYPES OF LOOPS AS "INTERSECTION AND SAMPLING (SYSTEM) DETECTORS" ON THE SIGNAL LAYOUT, THE INTERCONNECT PLAN AND THE SYSTEM CABLE PLAN. WHEN AN EXISTING CONTROLLER IS UTILIZED FOR THIS TYPE OF DETECTION, THE PAY ITEM "INDUCTIVE LOOP DETECTOR WITH SYSTEM OUTPUT" SHOULD BE USED.

**ARTERIAL-VOLUME DENSITY ("FAR OUT" DETECTION)
CROSS STREET-VOLUME DENSITY ("FAR OUT" DETECTION)**



DETAIL 1
N.T.S.

**ARTERIAL-VOLUME DENSITY ("FAR OUT" DETECTION)
CROSS STREET-NON VOLUME DENSITY ("UPTIGHT" PRESENCE DETECTION)**



DETAIL 2
N.T.S.

PLACEMENT OF DETECTORS

THE FOLLOWING FIGURES REPRESENT THE MOST COMMON DETECTOR LOOP LOCATIONS AND SIZES. ADJUSTMENTS WILL BE NECESSARY FOR SPECIFIC GEOMETRIC CONSIDERATIONS.

LOCATIONS AND DEMENSIONS OF DETECTOR LOOPS ARE REQUIRED ON ALL SIGNAL LAYOUT PLAN SHEETS.

"FAR OUT" DETECTION REFERS TO LOCKING, PRESENCE TYPE DETECTION LOCATED IN THRU LANES, RIGHT TURN LANES, AND RIGHT TURN LANE TAPER AREAS (IF APPLICABLE), USUALLY 250' (75 m) IN ADVANCE OF STOP BARS. "UPTIGHT" DETECTION REFERS TO NON-LOCKING PRESENCE TYPE DETECTION LOCATED IN ALL LANES AND 10'-15' (3.0 m-4.5 m) BEHIND THE CROSSING STREET'S EDGE OF PAVEMENT EXTENDED.

NOTE:

ALL DETAILS AND NOTES SHOWN ARE FROM THE I.D.O.T. DISTRICT 1 TRAFFIC SIGNAL DESIGN GUIDELINES DATED JANUARY 1995

THIS DRAWING HAS BEEN PREPARED TO ASSIST THE RESIDENT ENGINEER FOR ALL ROADWAY RESURFACING OR S.M.A.R.T. PROJECTS WHERE THE DIMENSIONS ARE NOT SHOWN ON THE PLANS AND THE FINAL LOCATIONS FOR CROSSWALKS OR STOP BARS ARE NOT DETERMINED.

FILE NAME = W:\diststd\22x34\ts07.dgn

USER NAME = gajlanobt
PLOT SCALE = 50.0000' / IN.
PLOT DATE = 1/4/2008

DESIGNED -
DRAWN -
CHECKED - R.K.F.
DATE -

REVISED -
REVISED -
REVISED -
REVISED -

**STATE OF ILLINOIS
DEPARTMENT OF TRANSPORTATION**

**DISTRICT 1 - DETECTOR LOOP INSTALLATION
DETAILS FOR ROADWAY RESURFACING**

SCALE: NONE SHEET NO. 1 OF 1 SHEETS STA. TO STA.

F.A.U. RTE.	SECTION	COUNTY	TOTAL SHEETS	SHEET NO.
3729	2014-069RS	COOK	30	30
TS-07		CONTRACT NO. 62A10		
FED. ROAD DIST. NO. 1 ILLINOIS FED. AID PROJECT				