

STATE OF ILLINOIS
DEPARTMENT OF TRANSPORTATION
DIVISION OF HIGHWAYS

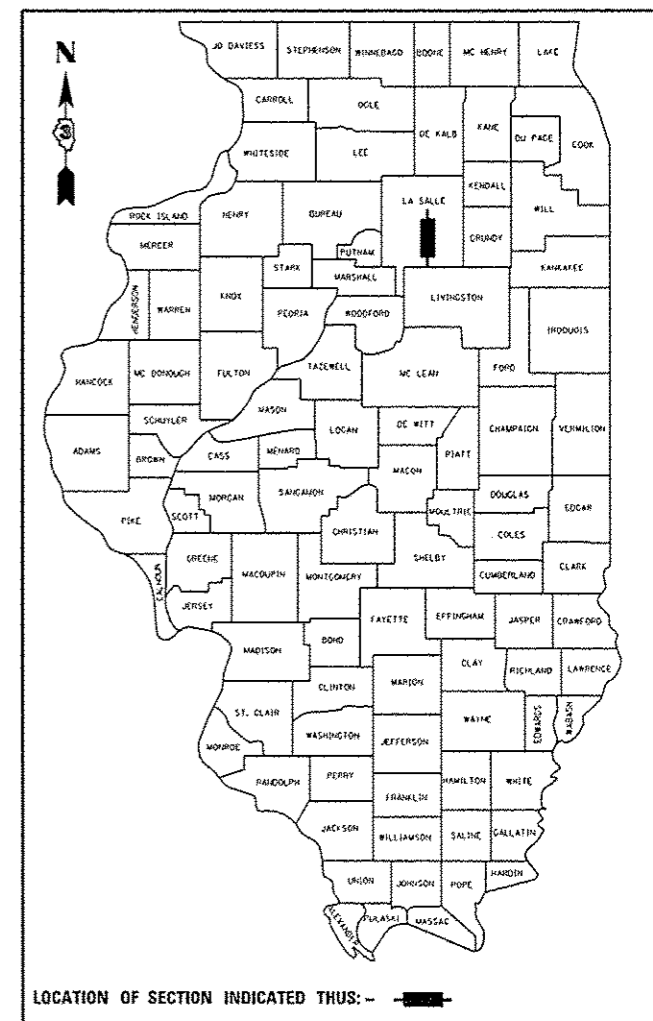
**PROPOSED
HIGHWAY PLANS**

FAP 68 (IL 23)
SECTION (6B-1)BP
BRIDGE PAINTING
LASALLE COUNTY

C-93-007-17

F.A.P. RTE.	SECTION	COUNTY	TOTAL SHEETS	SHEET NO.
68	(6B-1)BP	LASALLE	11	1
ILLINOIS			CONTRACT NO. 66F81	

D-93-013-17



FUNCTIONAL CLASSIFICATION
URBAN - OTHER PRINCIPAL ARTERIAL
2016 ADT = 8100
P.V. = 94.4%
S.U. = 6.25%
M.U. = 5.26%

STATE OF ILLINOIS
DEPARTMENT OF TRANSPORTATION

SUBMITTED 12-16 20 16
Kevin Marchak P.E.
REGIONAL ENGINEER

Jan 27 20 17
Maureen M. Addis P.E.
ENGINEER OF DESIGN AND ENVIRONMENT

Jan 27 20 17
Michelle
DIRECTOR OF PROGRAM DEVELOPMENT

**PRINTED BY THE AUTHORITY
OF THE STATE OF ILLINOIS**

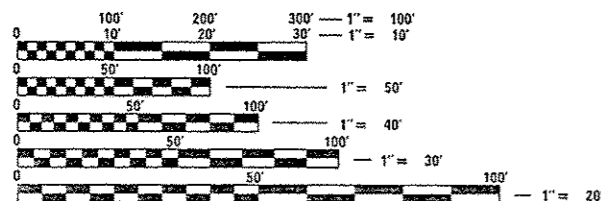
INDEX OF SHEETS

1. COVER SHEET
2. GENERAL NOTES
3. SUMMARY OF QUANTITIES
4. TYPICAL SECTIONS
5. TRAFFIC CONTROL DETAILS
6. TEMPORARY INFORMATION SIGNING
7. PAVEMENT MARKING DETAILS
- 8 - 11. EXISTING PLANS FOR STRUCTURE NO. 050-0160, FOR INFORMATION ONLY

STANDARDS

- | | |
|-----------|--|
| 701101-05 | OFF-ROAD OPERATIONS, MULTILANE, 15' (4.5 m) TO 24' (600 mm) FROM PAVEMENT EDGE |
| 701106-02 | OFF-ROAD OPERATIONS, MULTILANE, MORE THAN 15' (4.5 m) AWAY |
| 701423-10 | LANE CLOSURE, MULTILANE, WITH BARRIER, FOR SPEEDS ≥ 45 MPH TO 55 MPH |
| 701426-09 | LANE CLOSURE, MULTILANE INTERMITTENT OR MOVING OPERATION, FOR SPEEDS ≥ 45 MPH |
| 701428-01 | TRAFFIC CONTROL, SETUP AND REMOVAL, FREEWAY/EXPRESSWAY |
| 701901-06 | TRAFFIC CONTROL DEVICES |
| 704001-08 | TEMPORARY CONCRETE BARRIER |

PROJECT LOCATION
SN 050-0160
CARRYING FAP 68 (IL 23) OVER
WOLF CREEK 2.8 MILES NORTH OF IL 18

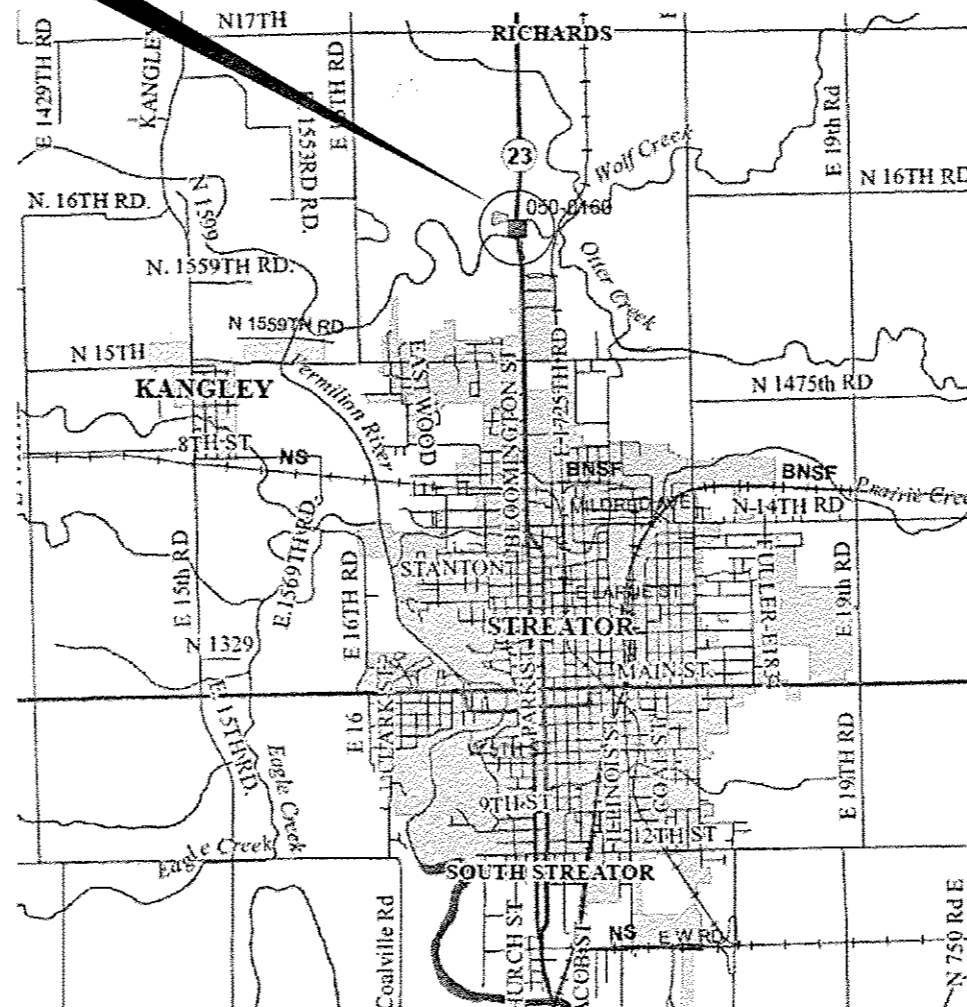


FULL SIZE PLANS HAVE BEEN PREPARED USING STANDARD ENGINEERING SCALES. REDUCED SIZED PLANS WILL NOT CONFORM TO STANDARD SCALES. IN MAKING MEASUREMENTS ON REDUCED PLANS, THE ABOVE SCALES MAY BE USED.

J.U.L.I.E.
JOINT UTILITY LOCATION INFORMATION FOR EXCAVATION
1-800-892-0123
OR 811

PROJECT ENGINEER: JOE KANNEL P.E.
UNIT CHIEF: RON WOODSHANK

CONTRACT NO. 66F81

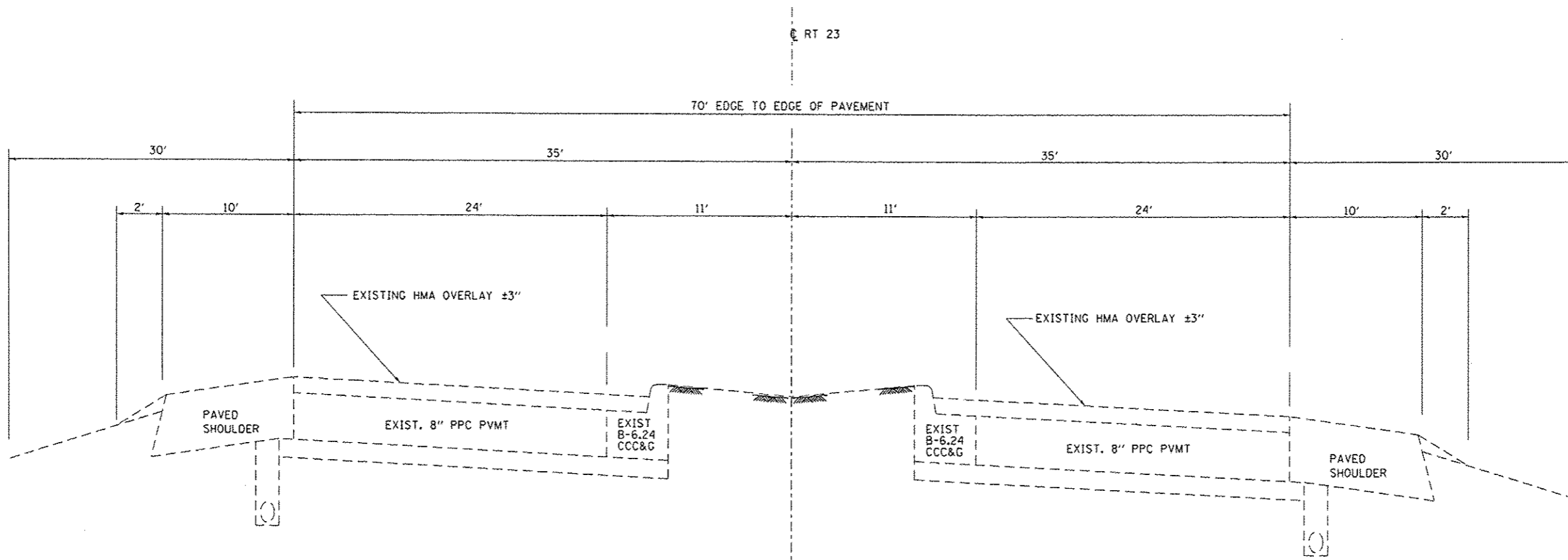


POINT LOCATION

CODE NO.	ITEM	UNIT	TOTAL QUANTITY	CONSTR. CODE
				B. P. O.
				100% STATE
				BRIDGE
				0014
				S. N. 050-0160
50606701	CLEANING AND PAINTING STRUCTURAL STEEL, LOCATION 1	LSUM	1	1
67100100	MOBILIZATION	LSUM	1	1
70100325	TRAFFIC CONTROL AND PROTECTION, STANDARD 701423	EACH	2	2
70400100	TEMPORARY CONCRETE BARRIER	FOOT	610	610
70600250	IMPACT ATTENUATORS, TEMPORARY (NON- REDIRECTIVE), TEST LEVEL 3	EACH	2	2
78009006	MODIFIED URETHANE PAVEMENT MARKING - LINE 6"	FOOT	316	316
X0327980	PAVEMENT MARKING REMOVAL - WATER BLASTING	SO FT	574	574
X5060601	CONTAINMENT AND DISPOSAL OF NON-LEAD PAINT CLEANING RESIDUES NO. 1	LSUM	1	1
Z0030850	TEMPORARY INFORMATION SIGNING	SO FT	42	42

9
 *SPECIALITY ITEMS

FILE NAME : p:\16084EB10\ITEG, Illinois.gov\PI001\00	USER NAME : wadthankr1	DESIGNED - RLW	REVISED -	STATE OF ILLINOIS DEPARTMENT OF TRANSPORTATION	SUMMARY OF QUANTITIES			F.A.P. RTE.	SECTION	COUNTY	TOTAL SHEETS	SHEET NO.
Documents\1001 Offices\District 3\Projects\038	DRAWN Data\0386PRLW\title.dgn	CHECKED -	REVISED -					68	16B-18P	LASALLE	11	3
PLOT SCALE = 100.0000 1/4" = 1'	DATE - 11/15/2016	REVISIONS			SCALE:	SHEET NO. 1 OF 1 SHEETS	STA.	TO STA.	CONTRACT NO. 66F81			
PLOT DATE = 12/13/2016					ILLINOIS FED. AID PROJECT							

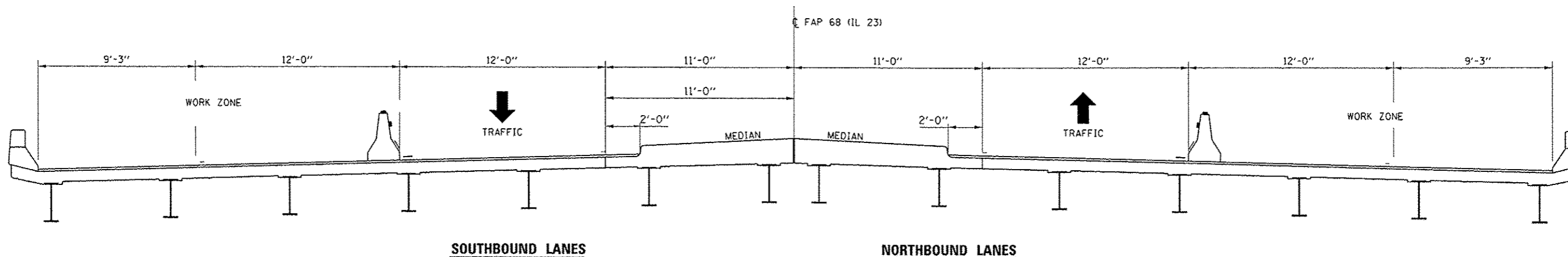


TYPICAL SECTION

*STA. 140+43 TO STA. 141+43
 *STA. 142+73 TO STA. 143+73

*STATIONS TAKEN ALONG C OF FAP RTE. 68 (IL 23)

FILE NAME :	USER NAME : woodshank1	DESIGNED - RLW	REVISED -	STATE OF ILLINOIS DEPARTMENT OF TRANSPORTATION	TYPICAL SECTION	F.A.P. RTE. :	SECTION :	COUNTY :	TOTAL SHEETS :	SHEET NO. :
path: \\11.084E810\ITC\Illinois.gov\PW\DOT\Documents\DOT Offices\District 3\Projects\036	DRAWN: sta-0366f RLW	CHECKED -	REVISED -			68	(68-1)BP	LASALLE	11	4
PLOT SCALE = 100.0000' / 1"	DATE - 11/15/2016	REVISED -	REVISED -			CONTRACT NO. 66F81				
PLOT DATE = 12/13/2016	DATE - 11/15/2016	REVISED -	REVISED -			ILLINOIS FED. AID PROJECT				
				SCALE:	SHEET NO. 1 OF 1 SHEETS	STA.	TO STA.			



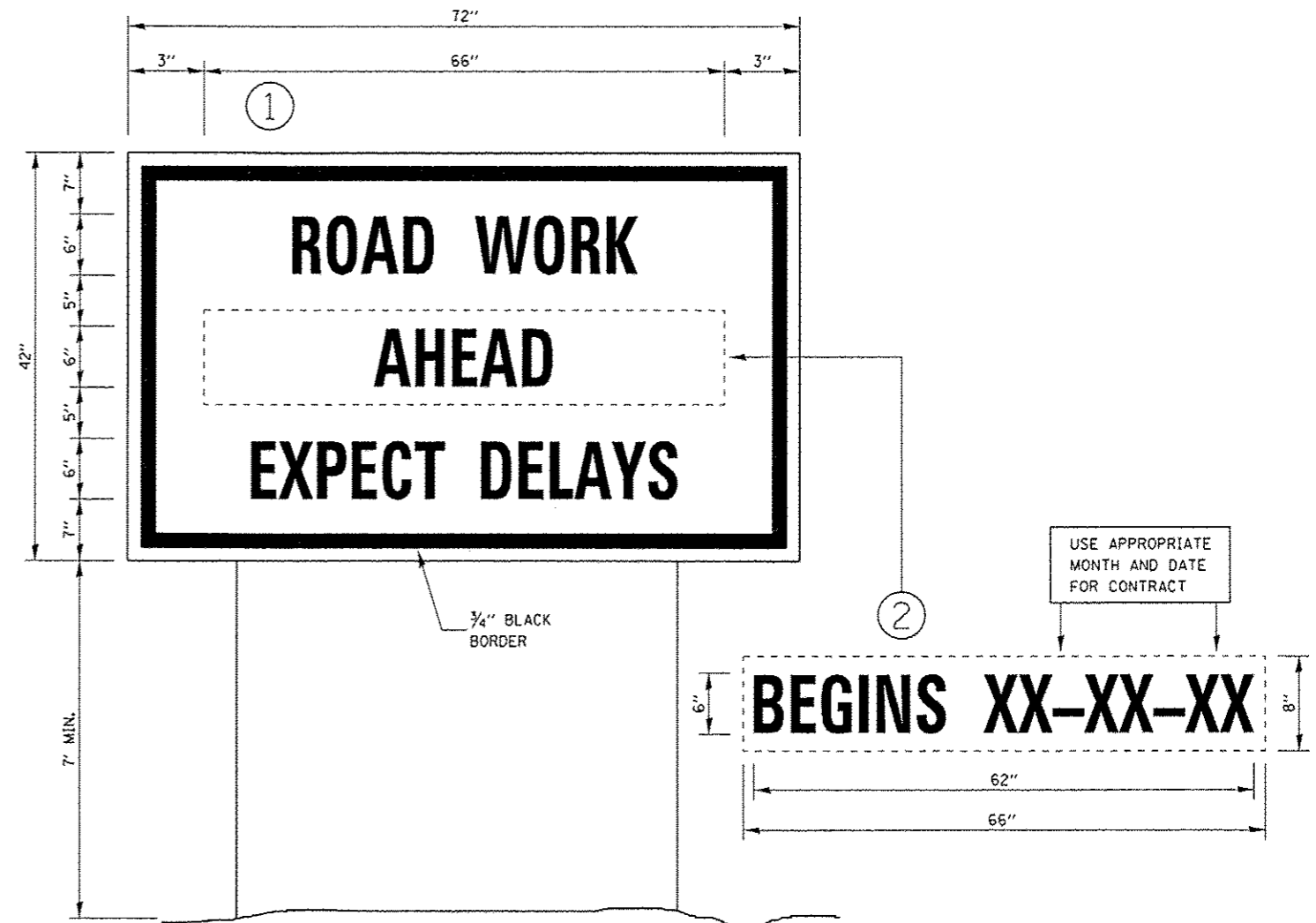
SOUTHBOUND LANES

NORTHBOUND LANES

CROSS SECTION

NORTHBOUND AND SOUTHBOUND LANES SHALL BE CONSIDERED SEPARATE TRAFFIC CONTROL SETUPS

FILE NAME : p:\11\0894810\INTEG\Illinois.gov\PW1001\Documents\1001 Offices\District 3\Projects\0366\DRAWING\0366FRL\0366FRL.dgn USER NAME : woodshack1 PLOT SCALE : 100.0000 ' / in. PLOT DATE : 12/13/2016	DESIGNED - RLW	REVISIED -	STATE OF ILLINOIS DEPARTMENT OF TRANSPORTATION	TRAFFIC CONTROL DETAILS				F.A.P. RTE.	SECTION	COUNTY	TOTAL SHEETS	SHEET NO.
	DRAWN	REVISIED -						68	16B-11BP	LASALLE	11	5
	CHECKED -	REVISIED -		CONTRACT NO. 66F81				ILLINOIS FED. AID PROJECT				
	DATE - 11/15/2016	REVISIED -		SCALE:	SHEET NO. 1 OF 1 SHEETS	STA.	TO STA.					

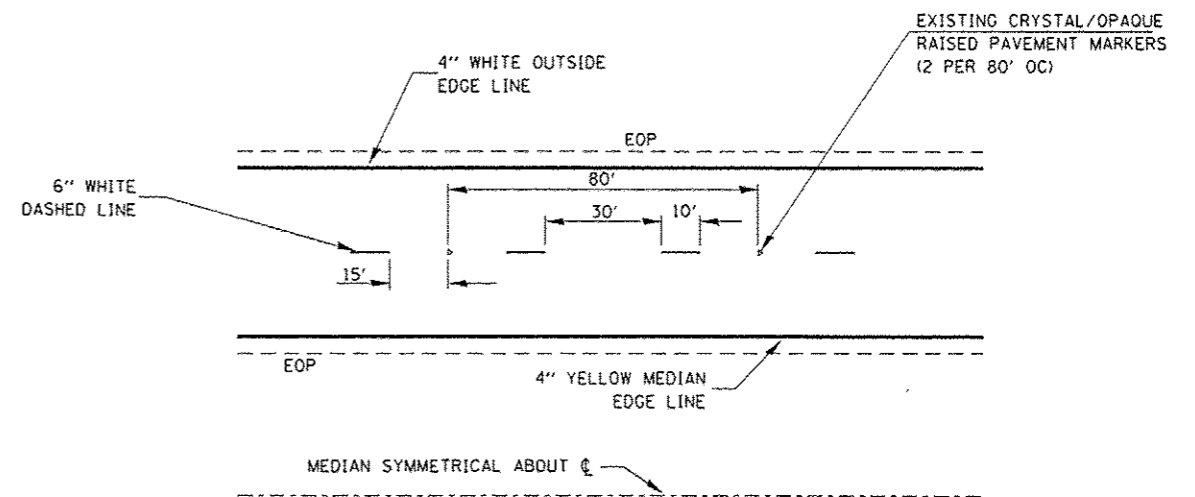
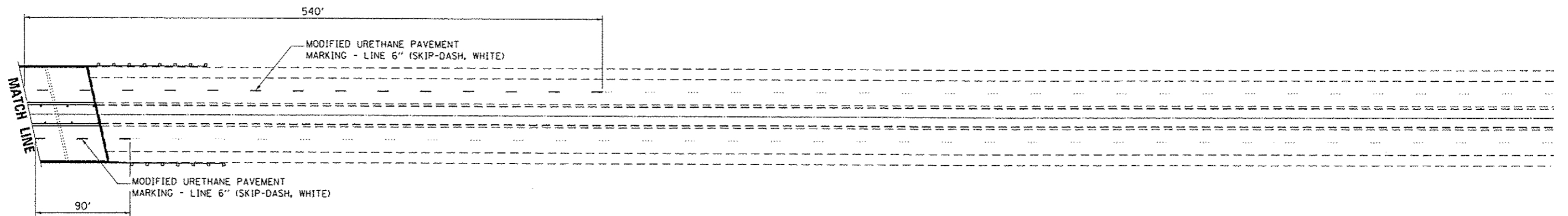
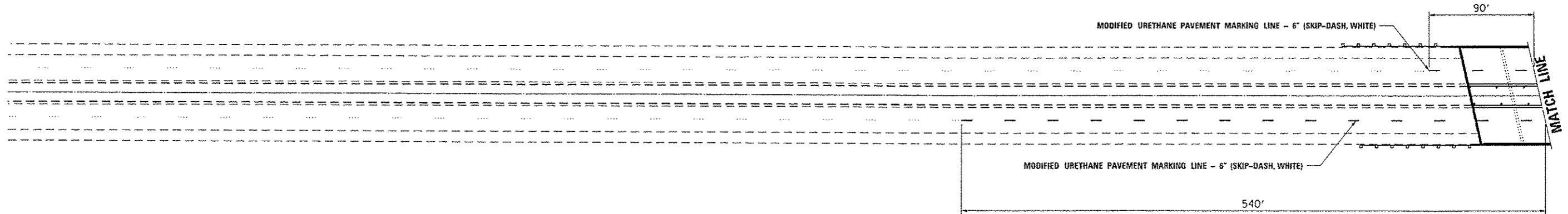
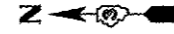


TEMPORARY INFORMATION SIGNING

NOTES:

1. USE 6" D BLACK LETTERING ON FLUORESCENT ORANGE BACKGROUND.
2. ERECT SIGNS AT LOCATIONS IN ADVANCE OF THE "ROAD CONSTRUCTION AHEAD" SIGNS AS DIRECTED BY THE ENGINEER.
3. ERECT SIGN ① WITH INSTALLED PANEL ② A MINIMUM OF ONE WEEK PRIOR TO THE START OF THE LANE CLOSURE.
4. REMOVE PANEL ② ON THAT DATE.
5. SEE SPECIAL PROVISION "TEMPORARY INFORMATION SIGNING" FOR ADDITIONAL INFORMATION.
6. WILL BE PAID FOR PER 50 FT AS "TEMPORARY INFORMATION SIGNING". EACH SIGN = 21 50 FT AND THE DATE PANEL ② WILL NOT BE MEASURED SEPARATELY FOR PAYMENT.

FILE NAME :	USER NAME : woodshankr1	DESIGNED - RLW	REVISED -	STATE OF ILLINOIS DEPARTMENT OF TRANSPORTATION	PAVEMENT MARKING DETAILS	P.A.P. RTE.	SECTION	COUNTY	TOTAL SHEETS	SHEET NO.	
path:\IL084EBIDHTEG\Illinois\p4100T\Documents\DOT Offices\District 3\Projects\036	DRAWN: Date\0366RLW\kalis.dgn	CHECKED -	REVISED -			68	(68-1)BP	LASALLE	11	6	
PLOT SCALE = 100.0000 / in.	DATE - 11/15/2016	REVISED -	REVISED -			CONTRACT NO. 66F81		ILLINOIS FED. AID PROJECT			
PLBT DATE = 12/13/2016	DATE - 11/15/2016	REVISED -	REVISED -			SCALE:	SHEET NO. 1 OF 1 SHEETS	STA.	TO STA.		



TYPICAL PAVEMENT MARKINGS

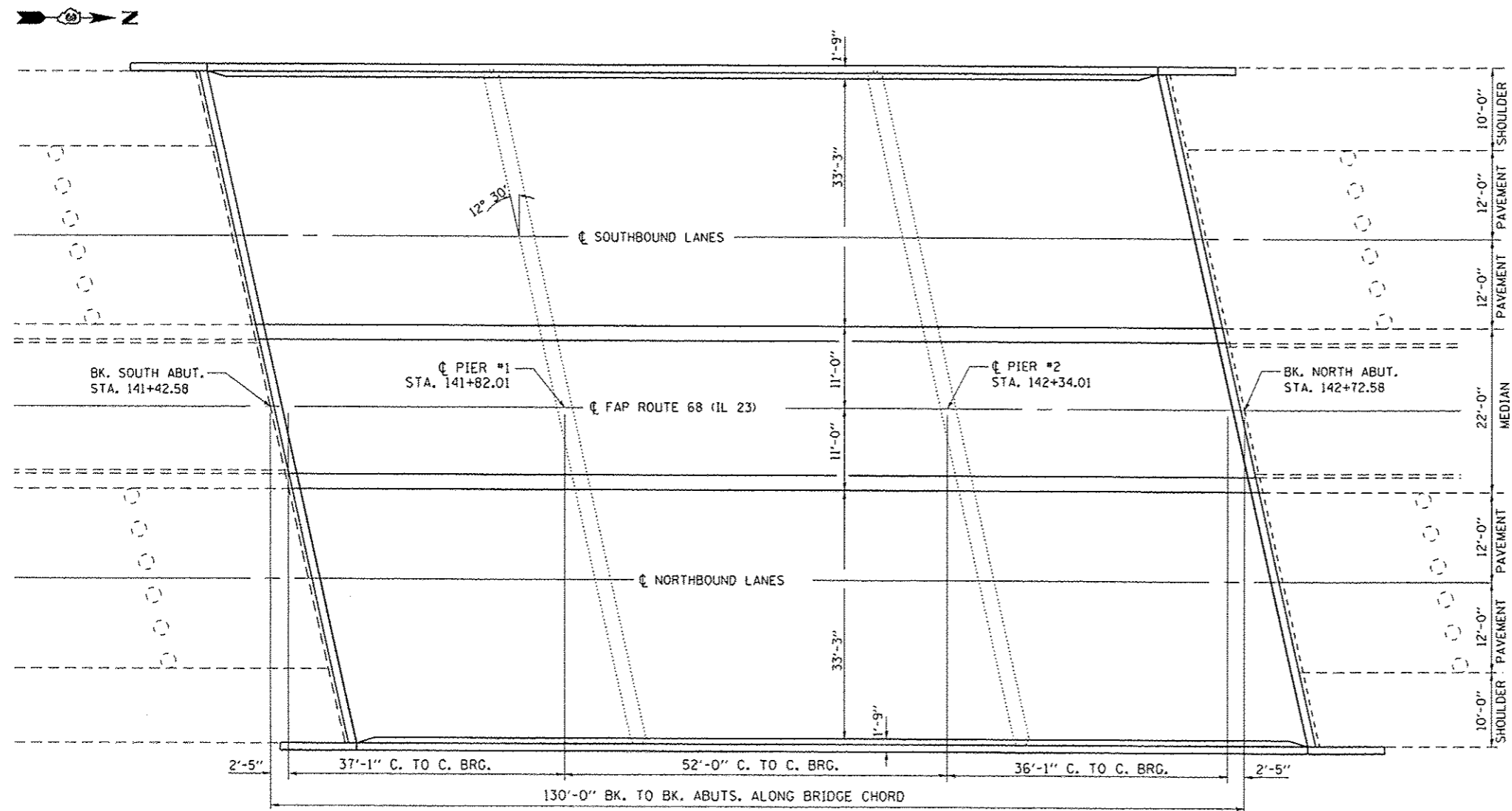
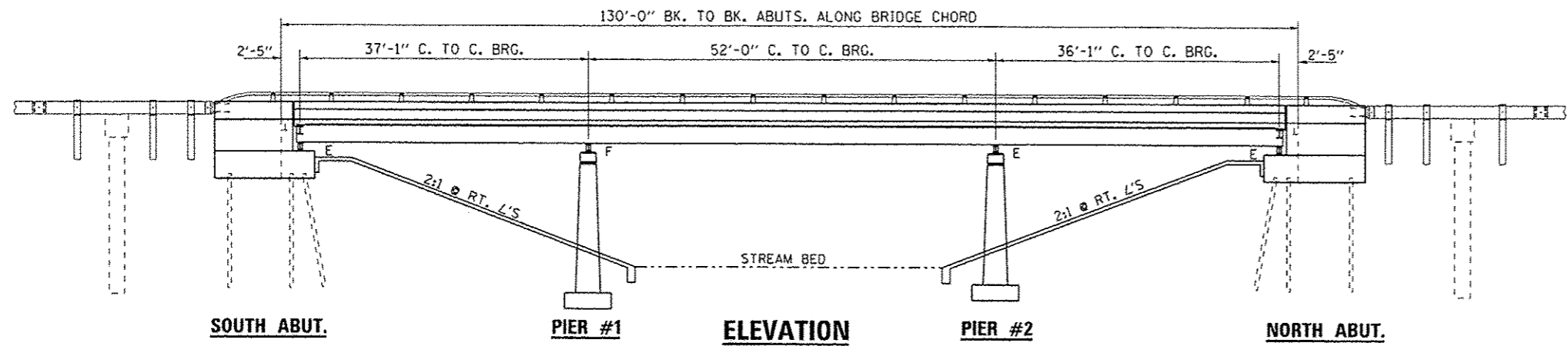
FILE NAME :	USER NAME : woodshankr1	DESIGNED - RLW	REVISED -
p:\1\1084EBID\HTEC\illinois.gov\PHDOT\Documents\IDOT Offices\District 3\Projects\0366\DRAWING\0366\RLW\0366.dgn		DRAWN	REVISED -
	PLOT SCALE = 100.0000' / in.	CHECKED -	REVISED -
	PLOT DATE = 12/13/2016	DATE - 11/15/2016	REVISED -

**STATE OF ILLINOIS
DEPARTMENT OF TRANSPORTATION**

PAVEMENT MARKING DETAILS

SCALE: SHEET NO. 1 OF 1 SHEETS STA. TO STA.

F.A.P. RTE.	SECTION	COUNTY	TOTAL SHEETS	SHEET NO.
68	16B-1BP	LASALLE	11	7
ILLINOIS FED. AID PROJECT			CONTRACT NO. 66F81	



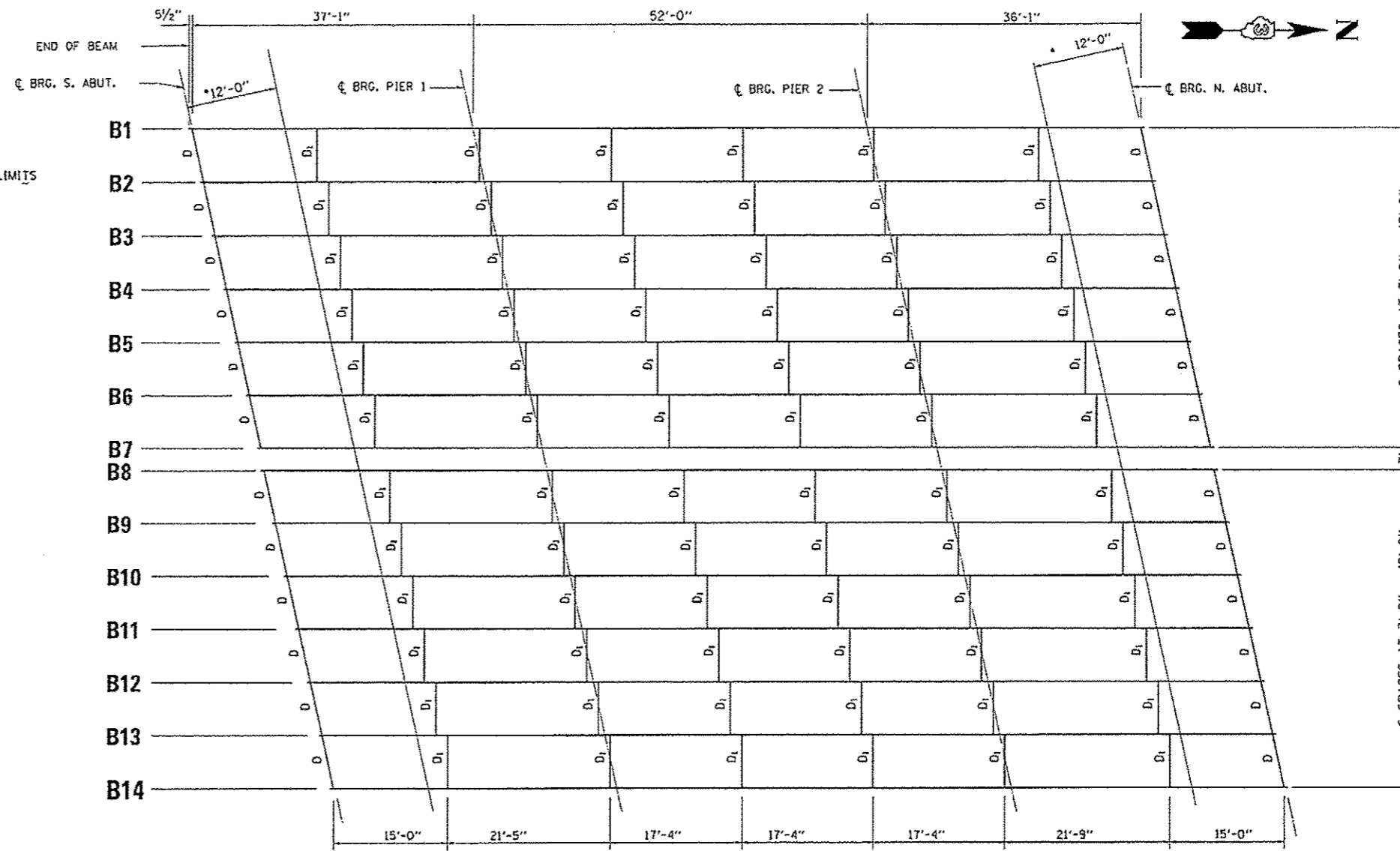
PLAN
S.N. 050-0160

TOTAL BILL OF MATERIAL

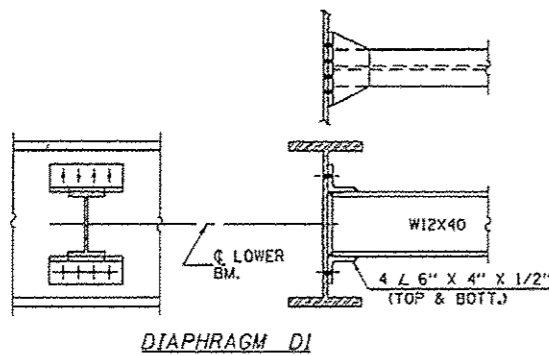
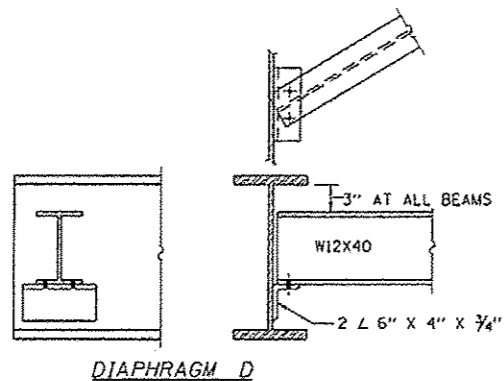
ITEM	UNIT	SUPER	SUB	TOTAL
CLEANING AND PAINTING, STRUCTURAL STEEL, LOCATION 1	L SUM	1		1
CONTAINMENT AND DISPOSAL OF NON-LEAD PAINT CLEANING RESIDUES NO. 1	L SUM	1		1

FOR INFORMATION ONLY

FILE NAME :	USER NAME : woodshenk+1	DESIGNED - RLW	REVISED -	STATE OF ILLINOIS DEPARTMENT OF TRANSPORTATION	EXISTING GENERAL PLAN AND ELEVATION	F.A.P. RTE.	SECTION	COUNTY	TOTAL SHEETS	SHEET NO.	
path: \\L084EB10\ITEG\illinois.gov\PIW001\Documents\1001\Office\District 3\Projects\035\DRAWING\03566\RL\Details.dgn	PLOT SCALE = 100.0000' / 1"	CHECKED -	REVISED -			68	16B-11BP	LASALLE	11	8	
	PLOT DATE = 12/13/2016	DATE -	REVISED -			CONTRACT NO. 66F81		ILLINOIS FED. AID PROJECT			
						SCALE:	SHEET NO. 1 OF 4 SHEETS	STA.	TO STA.		

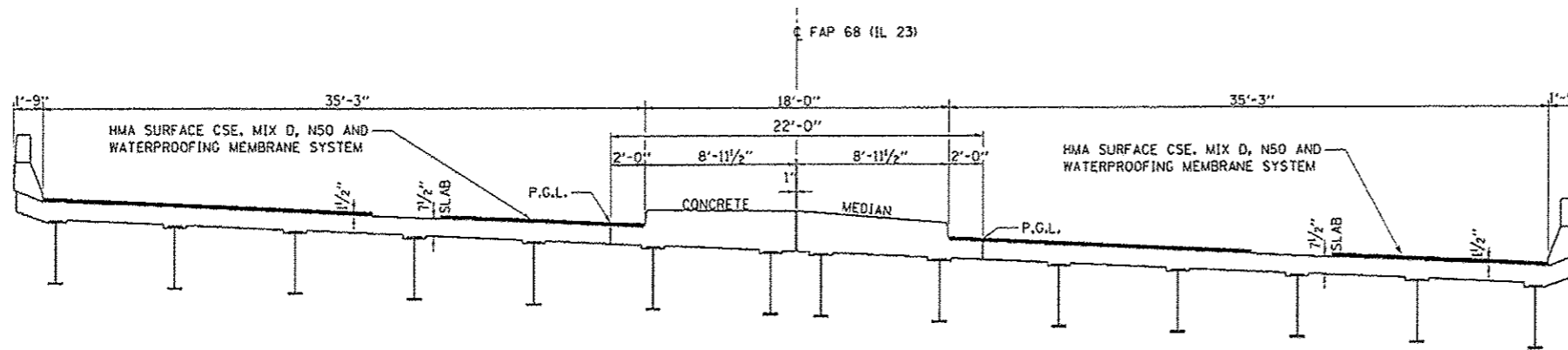


*CLEANING AND PAINTING STRUCTURAL STEEL LIMITS



FRAMING PLAN

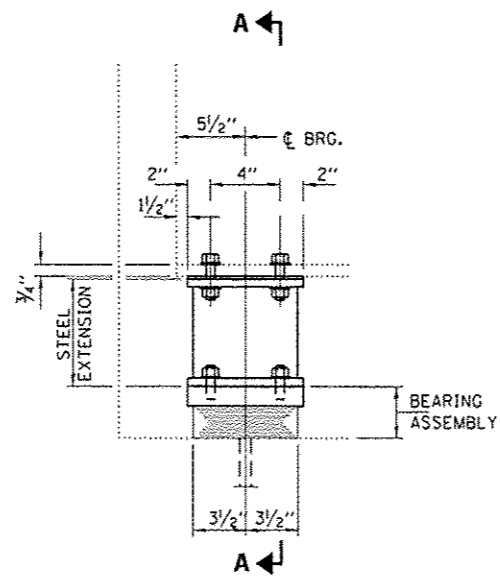
ALL BEAMS W27x94



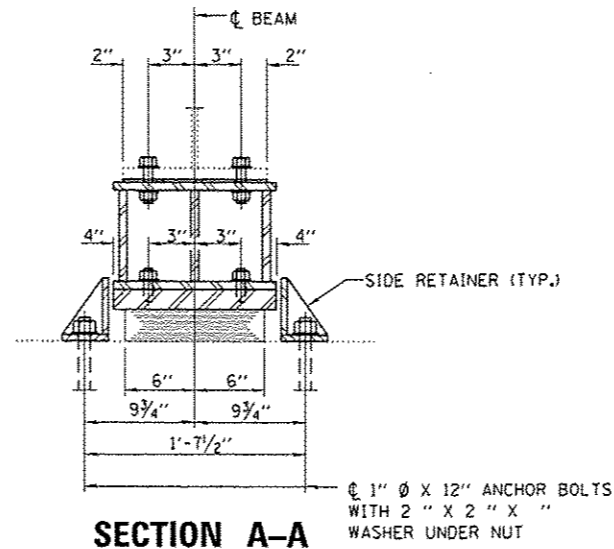
DECK SECTION

FOR INFORMATION ONLY

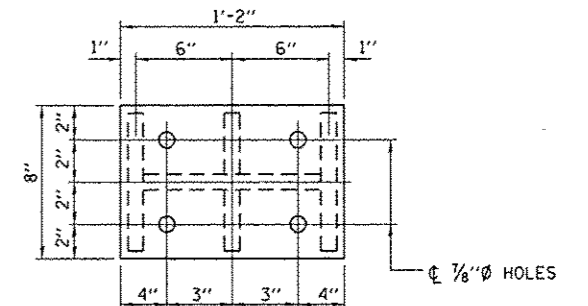
FILE NAME	USER NAME	DESIGNED	REVISOR	STATE OF ILLINOIS DEPARTMENT OF TRANSPORTATION	EXISTING FRAMING PLAN	F.A.P. RTE.	SECTION	COUNTY	TOTAL SHEETS	SHEET NO.		
68	68-11BP	LASALLE	11			9						
SCALE: SHEET NO. 2 OF 4 SHEETS STA. TO STA.						ILLINOIS FED. AID PROJECT						
CONTRACT NO. 66F81												



ELEVATION AT ABUTMENT

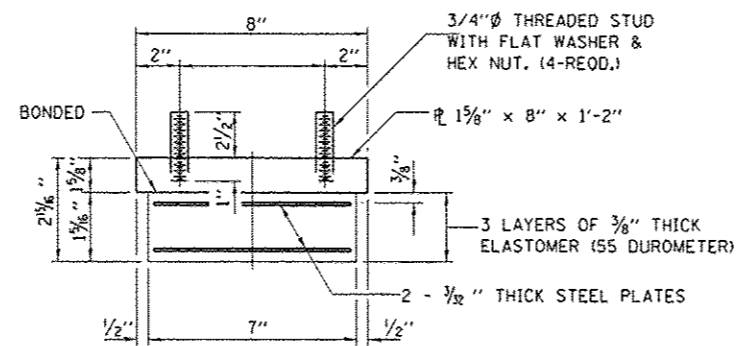


SECTION A-A



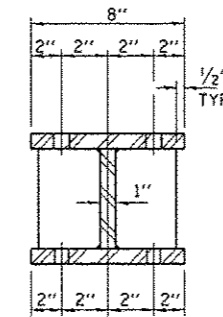
PLAN TOP AND BOTTOM PLATE

TYPE I ELASTOMERIC EXP. BRG.

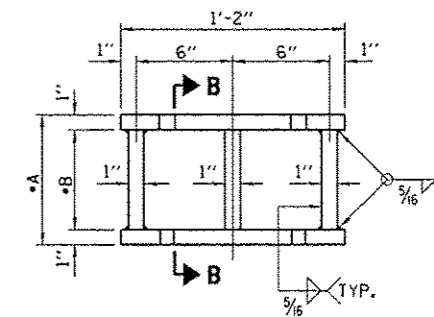


BEARING ASSEMBLY

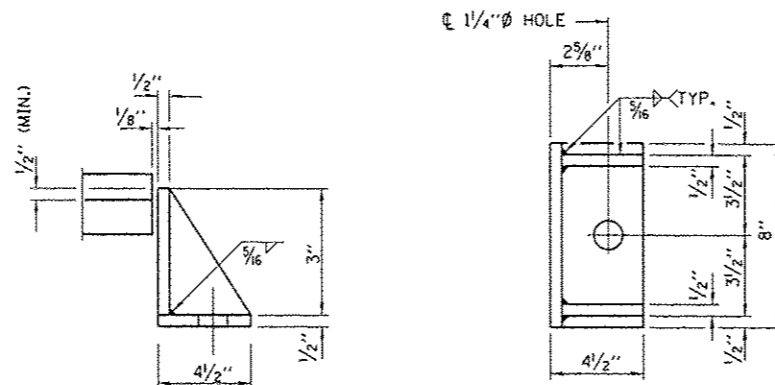
NOTE:
SHIM PLATES SHALL NOT BE PLACED
UNDER BEARING ASSEMBLY.



SECTION B-B



STEEL EXTENSION DETAIL

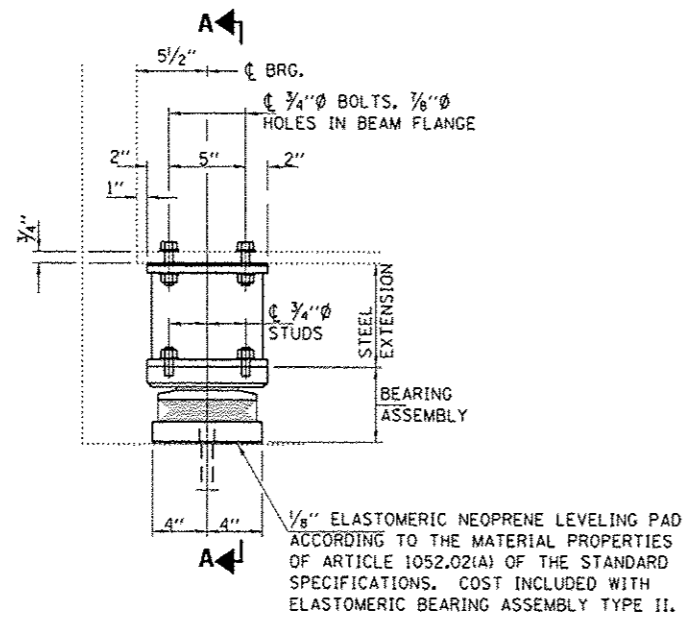


SIDE RETAINER

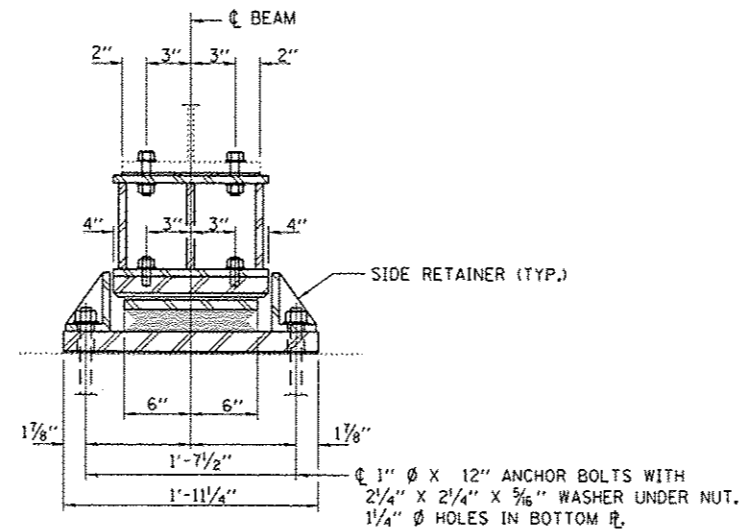
EQUIVALENT ROLLED ANGLE WITH STIFFENERS
WILL BE ALLOWED IN LIEU OF WELDED PLATES.

FOR INFORMATION ONLY

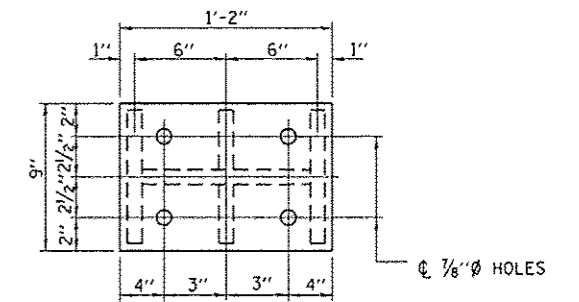
FILE NAME :	USER NAME : woodshankr1	DESIGNED - RLW	REVISED -	STATE OF ILLINOIS DEPARTMENT OF TRANSPORTATION	ELASTOMERIC BEARING ASSEMBLY, TYPE I AT SOUTH ABUTMENT	F.A.P. RTE.	SECTION	COUNTY	TOTAL SHEETS	SHEET NO.	
p:\1\108\EB10\HTEC\illinois.gov\PIW1001\Do	Documents\1001\Offices\District 3\Projects\036	DRAWN Data\03666\RLW\Detail.dgn	REVISED -			68	16B-118P	LASALLE	11	10	
	PLDT SCALE = 100.0000 / in.	CHECKED -	REVISED -			CONTRACT NO. 66FB1					
	PLDT DATE = 12/13/2016	DATE -	REVISED -			ILLINOIS FED. AID PROJECT					
					SCALE:	SHEET NO. 3 OF 4 SHEETS		STA.	TO STA.		



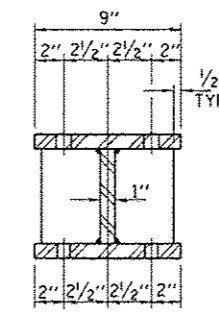
ELEVATION AT ABUTMENT



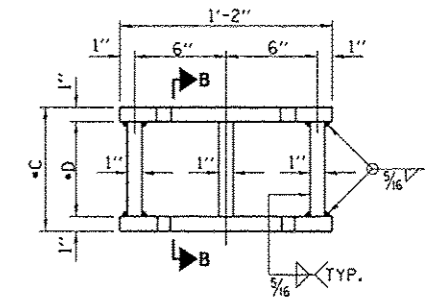
SECTION A-A



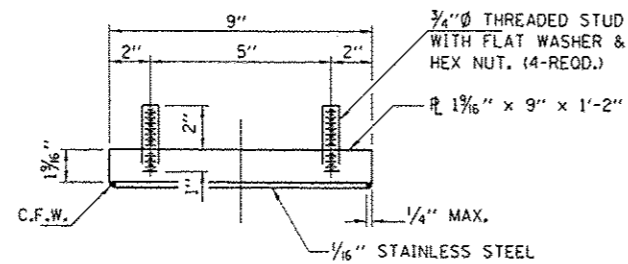
PLAN TOP AND BOTTOM PLATE



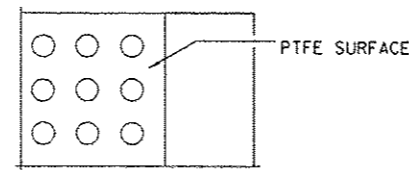
SECTION B-B



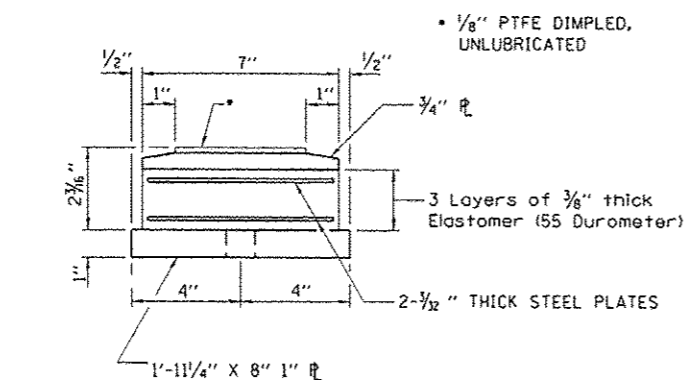
STEEL EXTENSION DETAIL



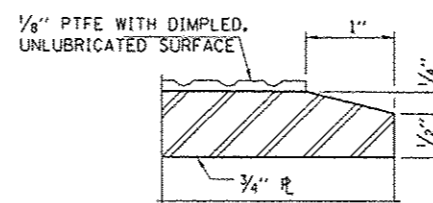
TOP BEARING ASSEMBLY



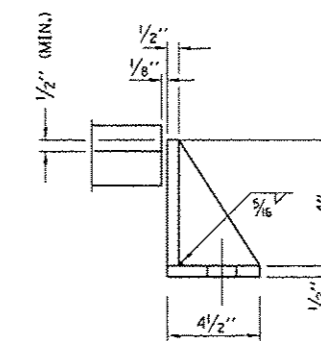
PLAN-PTFE SURFACE



BOTTOM BEARING ASSEMBLY

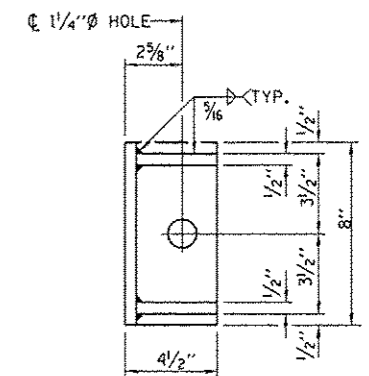


SECTION THRU PTFE



SIDE RETAINER

EQUIVALENT ROLLED ANGLE WITH STIFFENERS WILL BE ALLOWED IN LIEU OF WELDED PLATES.



FOR INFORMATION ONLY

FILE NAME :	USER NAME : woodshank1	DESIGNED - RLW	REVISED -	STATE OF ILLINOIS DEPARTMENT OF TRANSPORTATION	ELASTOMERIC BEARING ASSEMBLY, TYPE II AT NORTH ABUTMENT	F.A.P. RTE. :	SECTION :	COUNTY :	TOTAL SHEETS :	SHEET NO. :
p:\1\10846810\INTEG\11\proj\gov\PW1001\Documents\DOT\Office\District 3\Projects\0365\DRAWING\0365\FRL\11\11\11.dgn	DRAWN :	CHECKED -	REVISED -			68	16B-1BP	LASALLE	11	11
	PLOT SCALE = 100.0000 / 1 in.	DATE -	REVISED -			SCALE: SHEET NO. 4 OF 4 SHEETS STA. TO STA.		CONTRACT NO. 66F81		
	PLOT DATE = 12/13/2016					ILLINOIS FED. AID PROJECT				