

STATE OF ILLINOIS  
DEPARTMENT OF TRANSPORTATION

F.A.I. RTE.	SECTION	COUNTY	TOTAL SHEETS	SHEET NO.
*	D7 PAVT PRSV 2017-1	**VARIOUS	28	1
ILLINOIS CONTRACT NO. 74791				

\* F.A.I. 57 & 70 (I-57 & I-70)  
\*\* EFFINGHAM & FAYETTE

D-97-013-17

FOR INDEX OF SHEETS, SEE SHEET NO. 2

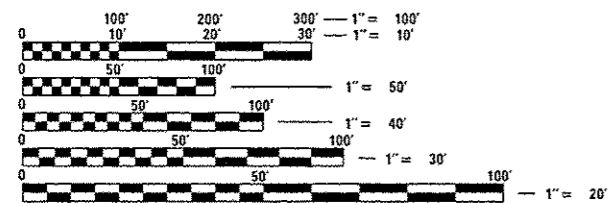
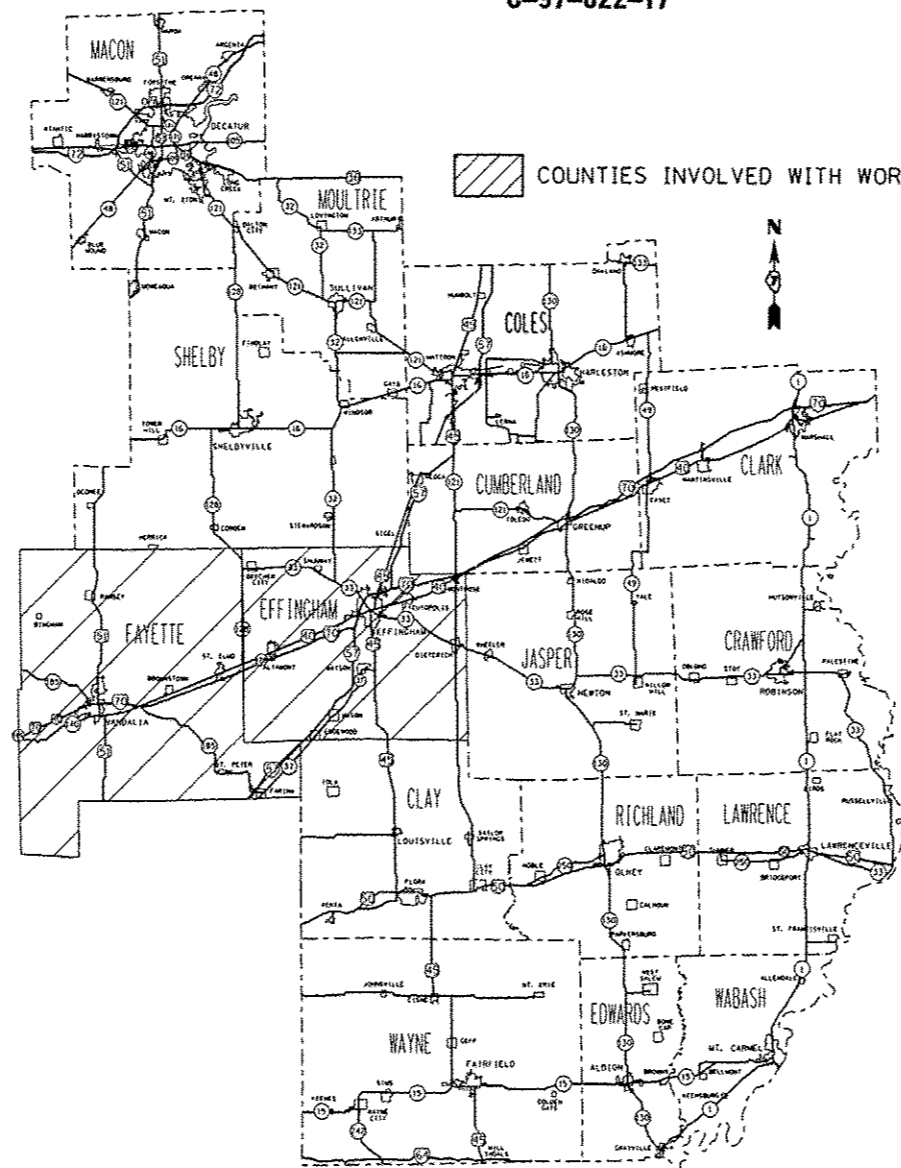
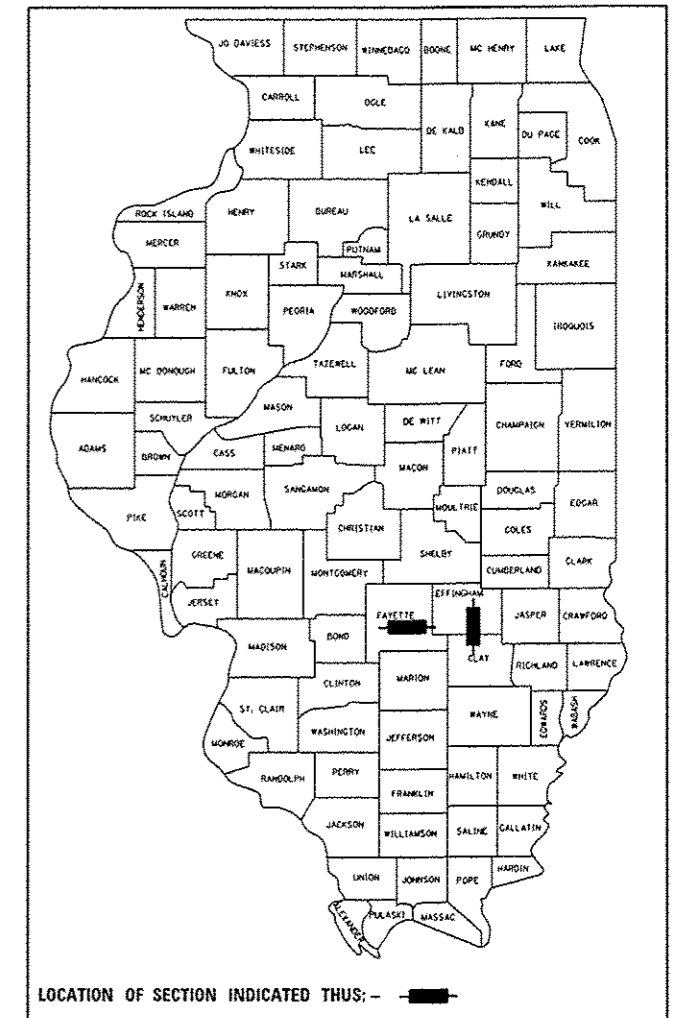
# PROPOSED HIGHWAY PLANS

F.A.I. ROUTES 57 (I-57) & 70 (I-70)  
SECTION D7 PAVT PRSV 2017-1

MICROSURFACING  
EFFINGHAM & FAYETTE COUNTIES

C-97-022-17

ADT = (I-70) 20,200 (2015), 47% TRUCKS  
(I-57) 16,800 (2015), 49% TRUCKS



FULL SIZE PLANS HAVE BEEN PREPARED USING STANDARD ENGINEERING SCALES. REDUCED SIZED PLANS WILL NOT CONFORM TO STANDARD SCALES. IN MAKING MEASUREMENTS ON REDUCED PLANS, THE ABOVE SCALES MAY BE USED.

J.U.L.I.E.  
JOINT UTILITY LOCATION INFORMATION FOR EXCAVATION  
1-800-892-0123  
OR 811

PROJECT ENGINEER: TOM RONAN  
PROJECT MANAGER: RUSS WALKER  
PHONE: (217)-342-8314  
CONTRACT NO. 74791

STATE OF ILLINOIS  
DEPARTMENT OF TRANSPORTATION

SUBMITTED FEBRUARY 7, 2017  
*Jeffrey M. Smith*  
REGIONAL ENGINEER

MAR 24, 2017  
*Muhammad M. Addis*  
ENGINEER OF DESIGN AND ENVIRONMENT

MAR 24, 2017  
*Annelle [Signature]*  
DIRECTOR OF PROGRAM DEVELOPMENT

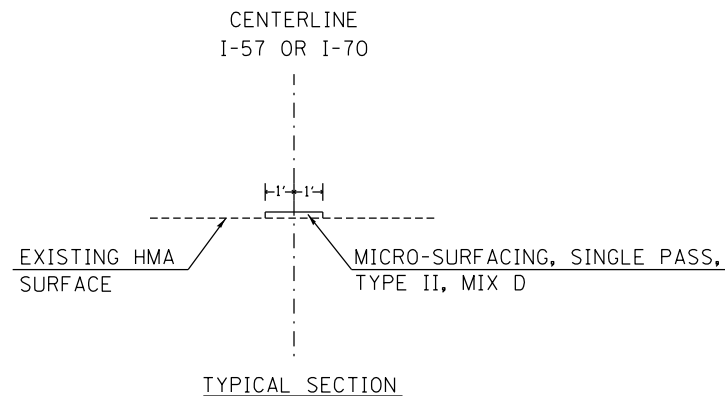
PRINTED BY THE AUTHORITY  
OF THE STATE OF ILLINOIS

INDEX OF SHEETS

SHEET NO.	TITLE
1	COVER SHEET
2	INDEX OF SHEETS, LIST OF STANDARDS, GENERAL NOTES
3	SUMMARY OF QUANTITIES
4	LOCATION MAPS
5-9	SCHEDULE OF QUANTITIES
10-24	I-70 ALIGNMENT
25-26	I-57 ALIGNMENT
27-28	PAVEMENT MARKING DETAILS

STANDARDS IN THE PLANS

STD. NO.	DESCRIPTION
000001-06	STANDARD SYMBOLS, ABBREVIATIONS AND PATTERNS
001006	DECIMAL OF AN INCH AND OF A FOOT
701101-05	OFF-ROAD OPERATIONS, MULTILANE, 15' TO 24" FROM PAVEMENT EDGE
701106-02	OFF-ROAD OPERATIONS, MULTILANE, MORE THAN 15' AWAY
701400-09	APPROACH TO LANE CLOSURE, FREEWAY/EXPRESSWAY
701406-11	LANE CLOSURE, FREEWAY/EXPRESSWAY, DAY OPERATIONS ONLY
701411-09	LANE CLOSURE, MULTILANE, AT ENTRANCE OR EXIT RAMP FOR SPEEDS =>45 MPH
701426-09	LANE CLOSURE, MULTILANE, INTERMITTENT OR MOVING OPERATIONS, FOR SPEEDS =>45 MPH
701901-06	TRAFFIC CONTROL DEVICES
780001-05	TYPICAL PAVEMENT MARKINGS
781001-04	TYPICAL APPLICATIONS RAISED REFLECTIVE PAVMENT MARKERS



GENERAL NOTES

THIS SECTION SHALL BE CONSTRUCTED IN ACCORDANCE WITH THE PLANS; THE "STANDARD SPECIFICATIONS FOR ROAD AND BRIDGE CONSTRUCTION" ADOPTED APRIL 1, 2016; THE "SUPPLEMENTAL SPECIFICATIONS AND RECURRING SPECIAL PROVISIONS" INDICATED ON THE CHECK SHEET, AND "THE SPECIAL PROVISIONS" INCLUDED IN THE PROPOSAL.

THE PROPOSED WORK IS LOCATED ON NORTHBOUND ROUTE I-57 IN EFFINGHAM COUNTY AND I-70 IN FAYETTE COUNTY.

THE WORK IN THIS SECTION CONSISTS OF PAVEMENT MARKING REMOVAL, RAISED REFLECTIVE PAVEMENT MARKER REMOVAL, LONGITUDINAL JOINT REPAIR, MICRO-SURFACING, PAVEMENT MARKING, RAISED REFLECTIVE PAVEMENT MARKERS, TRAFFIC CONTROL, AND ANY OTHER WORK NECESSARY TO COMPLETE THIS SECTION PER THE STANDARD SPECIFICATIONS.

THERE WILL BE NO CRACK/JOINT SEALING, BUMP REMOVAL, OR SCRATCH COAT FILLING ON THIS PROJECT.

PAVEMENT MARKING SHALL BE APPLIED IN ACCORDANCE WITH SECTION 780 OF THE STANDARD SPECIFICATIONS. THE TOTAL QUANTITY OF THERMOPLASTIC PAVEMENT MARKING-LINE 6" CONSISTS OF 37,819 FEET OF WHITE.

ALL SHORT-TERM PAVEMENT MARKING SHALL BE TAPE. THE TAPE SHALL BE PLACED BEYOND THE LIMITS OF THE MICRO-SURFACING ON THE DRIVING LANE SIDE.

MICRO-SURFACING AND BITUMINOUS MATERIALS (TACK COAT) QUANTITIES HAVE BEEN INCLUDED FOR THE EDGE LINE JOINTS AT THE EXIT AND ENTRANCE RAMP IN THE SUMMARY OF QUANTITIES. THE QUANTITIES ARE NOT INCLUDED IN THE SCHEDULE OF QUANTITIES. THE WIDTH FOR THE EDGE LINE IS 2 FEET, SAME AS SHOWN ON THE CENTER LINE DETAIL IN THE PLANS.

THE RAISED REFLECTIVE PAVEMENT MARKERS SHALL BE PUT IN AS DOUBLE MARKERS AS SHOWN ON STANDARD 781001-04.

RATES OF APPLICATIONS USED TO CALCULATE THE QUANTITIES ARE AS FOLLOWS:

BITUMINOUS MATERIALS (TACK COAT)	0.025 LBS / SQ FT
LONGITUDINAL JOINT REPAIR	2.016 TON / CU YD

STATION EQUATIONS

STATION EQUATIONS (I-70 EB & WB)

STA. 3038+74.48(BK I-70) = STA. 1505+44.20(AH I-70)  
 STA. 1610+33.67(BK I-70) = STA. 90+55.19(AH I-70)  
 STA. 399+14.06(BK I-70) = STA. 398+86.83(AH I-70)  
 STA. 519+40.32(BK I-70) = STA. 519A+12.05(AH I-70EB)  
 STA. 567A+20.20(BK I-70EB) = STA. 567+20.20(AH I-70)  
 STA. 721+10.09(BK I-70) = STA. 647+11.45(AH I-70)

STATION EQUATIONS (I-57 NB)

STA. 4582+77.63 (BK I-57) = STA. 4609+69.68(AH I-57)

BRIDGE OMISSIONS

BRIDGE OMISSIONS (I-70 EB)

STA. 1547+84.15 TO STA. 1551+15.45  
 STA. 1594+05.45 TO STA. 1595+10.70  
 STA. 119+43.67 TO STA. 120+56.49  
 STA. 124+96.46 TO STA. 126+74.64  
 STA. 137+21.96 TO STA. 139+55.16  
 STA. 455+67.29 TO STA. 456+93.02  
 STA. 482+22.90 TO STA. 483+71.40  
 STA. 537+50.00 TO STA. 550+50.00  
 STA. 607+07.00 TO STA. 613+98.00  
 STA. 705+00.00 TO STA. 710+20.00

BRIDGE OMISSIONS (I-70 WB)

STA. 1547+46.74 TO STA. 1550+78.04  
 STA. 1594+30.94 TO STA. 1595+36.19  
 STA. 119+87.51 TO STA. 121+00.33  
 STA. 125+75.19 TO STA. 127+53.52  
 STA. 138+00.84 TO STA. 140+34.04  
 STA. 455+74.71 TO STA. 456+98.02  
 STA. 482+19.76 TO STA. 483+68.26  
 STA. 537+00.00 TO STA. 550+50.00  
 STA. 607+07.00 TO STA. 613+98.00  
 STA. 705+00.00 TO STA. 710+98.00

PAVING OMISSIONS

PAVING OMISSIONS (I-70 EB)

STA. 523+20.00 TO STA. 526+50

• F.A.I. 57 & 70 (I-57 & I-70)  
 •• EFFINGHAM & FAYETTE

FILE NAME =	USER NAME = steffenmk	DESIGNED -	REVISED -	<b>STATE OF ILLINOIS DEPARTMENT OF TRANSPORTATION</b>	<b>INDEX OF SHEETS, STANDARDS IN THE PLANS, GENERAL NOTES, TYPICAL SECTION, STATION EQUATIONS AND BRIDGE OMISSIONS</b>	F.A.I. RTE.	SECTION	COUNTY	TOTAL SHEETS	SHEET NO.	
pw:\IL\084EBIDINTEG\illinois.gov\PIDOT\Documents\DOT Offices\District 7\Projects\74792\Drawings\CAD\Sheets\0774792-sht-genote.dwg	PLotted	CHECKED -	REVISED -			•	DT PAVT PRSV 2017-1	**VARIOUS	28	2	
Default	PLotted	DATE -	REVISED -			CONTRACT NO. 74791					
	PLotted					SCALE: N/A	SHEET 1 OF 1 SHEETS	STA.	TO STA.	ILLINOIS FED. AID PROJECT	

SUMMARY OF QUANTITIES			TOTAL QUANTITIES	CONSTRUCTION TYPE CODE		
CODE NO	ITEM	UNIT		URBAN 0005 EFFINGHAM	0005 FAYETTE URBAN	0005 FAYETTE RURAL
40600290	BITUMINOUS MATERIALS (TACK COAT)	POUND	7860	516	1857	5487
67100100	MOBILIZATION	LSUM	1	0.1	0.2	0.7
70100420	TRAFFIC CONTROL AND PROTECTION, STANDARD 701411	EACH	8		8	
70100700	TRAFFIC CONTROL AND PROTECTION, STANDARD 701406	LSUM	1	0.1	0.2	0.7
70300100	SHORT TERM PAVEMENT MARKING	FOOT	15124	1031	3121	10972
70300150	SHORT TERM PAVEMENT MARKING REMOVAL	SO FT	5038	343	1040	3655
* 78000400	THERMOPLASTIC PAVEMENT MARKING - LINE 6"	FOOT	37819	2578	7804	27437
* 78100100	RAISED REFLECTIVE PAVEMENT MARKER	EACH	3783	258	780	2745
78300200	RAISED REFLECTIVE PAVEMENT MARKER REMOVAL	EACH	3783	258	780	2745
X0327979	PAVEMENT MARKING REMOVAL - GRINDING	SO FT	18911	1289	3903	13719
X7015005	CHANGEABLE MESSAGE SIGN	CAL DA	42	14		28
Z0033650	LONGITUDINAL JOINT REPAIR	TON	20.3	1.4	4.2	14.7

SUMMARY OF QUANTITIES			TOTAL QUANTITIES	CONSTRUCTION TYPE CODE		
CODE NO	ITEM	UNIT		URBAN 0005 EFFINGHAM	0005 FAYETTE URBAN	0005 FAYETTE RURAL
Z0063804	MICRO-SURFACING, SINGLE PASS, TYPE II, MIXTURE D	SO YD	34935	2292	8253	24390

\* SPECIALTY ITEM

\* F.A.I. 57 & 70 (1-57 & 1-70)  
\*\* EFFINGHAM & FAYETTE

FILE NAME *	USER NAME * staffennk	DESIGNED -	REVISED -
Documents\DOT Offices\District 7\Projects\7479\Drawings\CAD\Sheets\0774791-shc-500.dgn		CHECKED -	REVISED -
PLOT SCALE * 1/8"=1'-0"		DATE -	REVISED -
PLOT DATE * 2/7/2017			

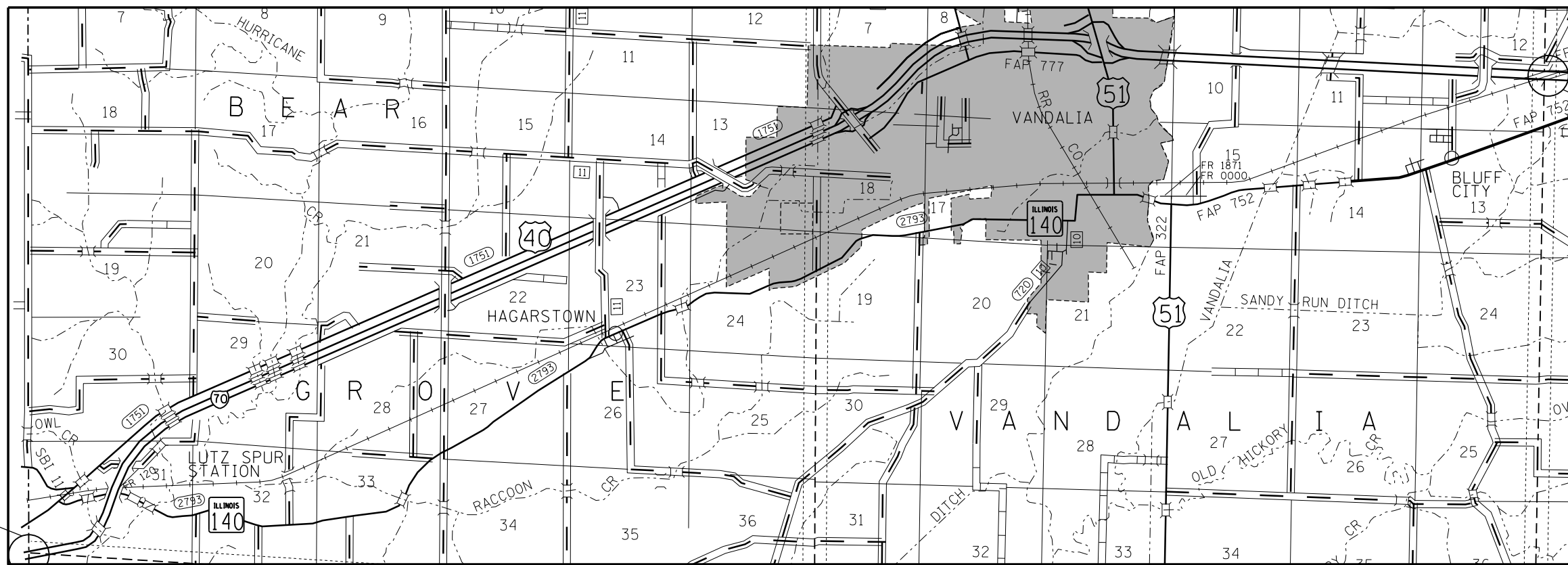
STATE OF ILLINOIS  
DEPARTMENT OF TRANSPORTATION

SUMMARY OF QUANTITIES

SCALE: SHEET OF SHEETS STA. TO STA.

F.A.I. RTE.	SECTION	COUNTY	TOTAL SHEETS	SHEET NO.
	07 PAVT PRSV 2017-1	**VARIOUS	28	3
			CONTRACT NO. 74791	
[ILLINOIS] FED. AID PROJECT				

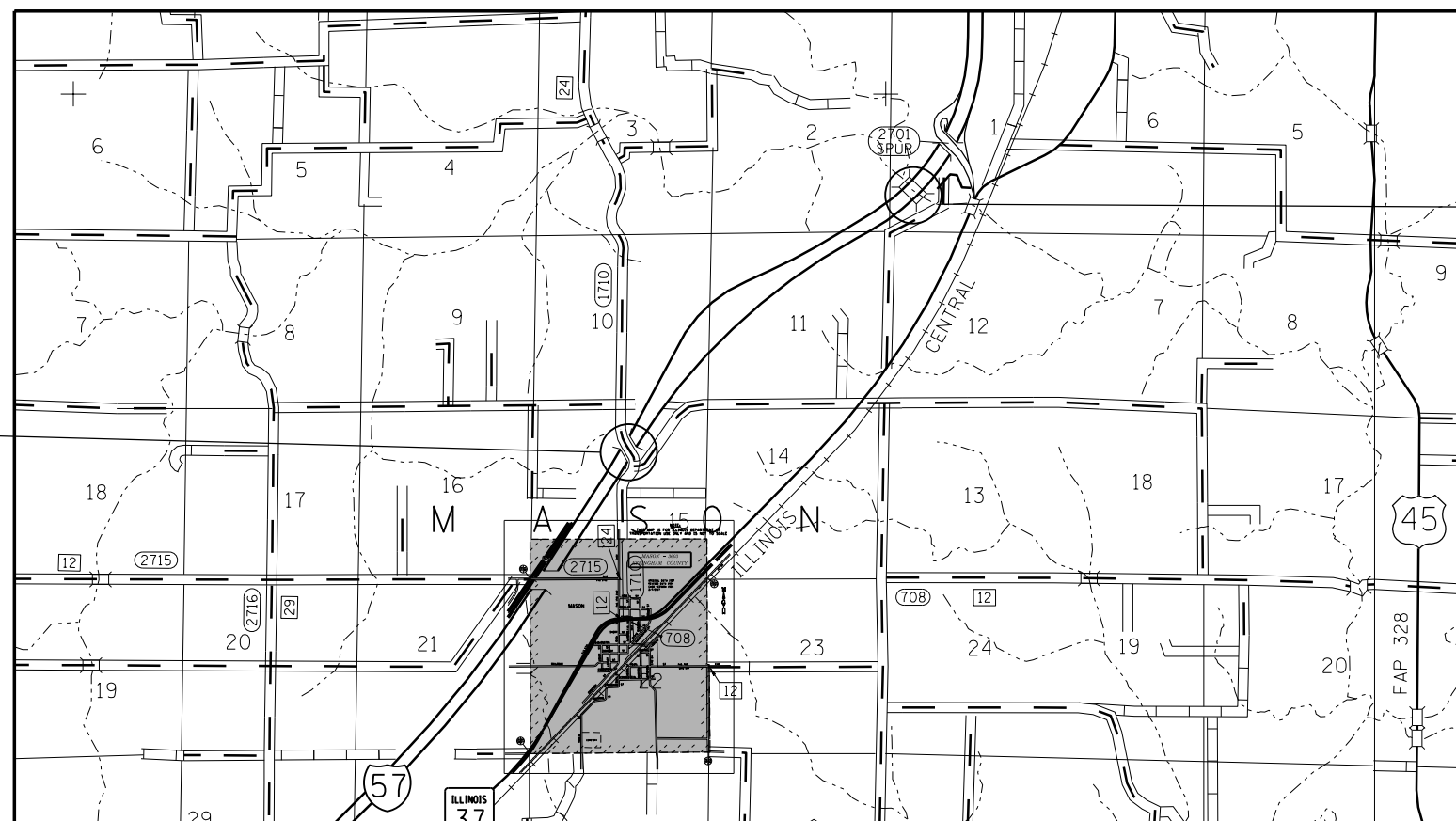
12



**PROJECT BEGINS:**  
I-70 EB & WB  
STA. 3038 + 61.00  
FAYETTE COUNTY LINE

**PROJECT ENDS:**  
I-70 EB & WB  
STA. 656 + 14.00  
IN FAYETTE COUNTY

**GROSS LENGTH = 74517.30 FT. = 14.113 MILE**  
**NET LENGTH = 70341.28 FT. = 13.322 MILE**



**PROJECT BEGINS:**  
I-57 NB  
STA. 4495 + 58.00  
IN EFFINGHAM COUNTY

**PROJECT ENDS:**  
I-57 NB  
STA. 4625 + 61.43  
IN EFFINGHAM COUNTY

**GROSS LENGTH = 10287.00 FT. = 1.948 MILE**  
**NET LENGTH = 10287.00 FT. = 1.948 MILE**

•F.A.I. 57 & 70 (I-57 & I-70)  
•EFFINGHAM & FAYETTE

FILE NAME =	USER NAME = steffenk	DESIGNED -	REVISED -
p:\11\084EBIDINTEG\illinois.gov\PIWIDOT\Documents\IDOT Offices\District 7\Projects\74791\Drawings\CAD\Sheets\0774791-sht-cover.dgn		REVISION	REVISED -
Default	PLOT DATE = 2/7/2017	CHECKED -	REVISED -
		DATE -	REVISED -

**STATE OF ILLINOIS  
DEPARTMENT OF TRANSPORTATION**

**LOCATION MAPS**

SCALE: SHEET OF SHEETS STA. TO STA.

F.A.I. RTE.	SECTION	COUNTY	TOTAL SHEETS	SHEET NO.
•	D7 PAVT PRSV 2017-1	**VARIOUS	28	4
			CONTRACT NO. 74791	
ILLINOIS FED. AID PROJECT				

I-70 EB (RURAL)				LENGTH	BITUMINOUS MATERIALS ( TACK COAT)	SHORT TERM PAVEMENT MARKING	SHORT TERM PAVEMENT MARKING REMOVAL	RAISED REFLECTIVE PAVEMENT MARKER REMOVAL	RAISED REFLECTIVE PAVEMENT MARKER	THERMOPLASTIC PAVEMENT MARKING-LINE 6"(WHITE SKIP-DASH)	PAVEMENT MARKING REMOVAL - GRINDING	MICRO-SURFACING, SINGLE PASS, TYPE II, MIX D
DESCRIPTION	STATION	IQ	STATION	FEET	POUND	FOOT	SO. FT.	EACH	EACH	FOOT	SO. FT.	SO. YD.
	3038+61.00	TO	3038+74.48	13.48	1	1	0	0	0	3	2	3
STA EQUATION	3038+74.48	BK=	1505+44.2 AH									
	1505+44.20	TO	1547+84.15	4239.95	212	424	141	106	106	1060	530	942
BRIDGE OMISSION	1547+84.15	TO	1551+15.45									
	1551+15.45	TO	1594+05.45	4290.00	215	429	143	107	107	1073	536	953
BRIDGE OMISSION	1594+05.45	TO	1595+10.70									
	1595+10.70	TO	1610+33.67	1522.97	76	152	51	38	38	381	190	338
STA EQUATION	1610+33.67	BK=	90+55.19 AH									
	90+55.19	TO	119+43.67	2888.48	144	289	96	72	72	722	361	642
BRIDGE OMISSION	119+43.67	TO	120+56.49									
	120+56.49	TO	124+96.46	439.97	22	44	15	11	11	110	55	98
BRIDGE OMISSION	124+96.46	TO	126+74.64									
	126+74.64	TO	137+21.96	1047.32	52	105	35	26	26	262	131	233
BRIDGE OMISSION	137+21.96	TO	139+55.16									
	139+55.16	TO	237+00.00	9744.84	487	974	324	244	244	2436	1218	2166
SECTION 26-0 ENDS												
SECTION 26-1 BEGINS												
	237+00.00	TO	377+21.00	14021.00	701	1402	467	351	351	3505	1753	3116
URBAN SECTION												
BRIDGE OMISSION	537A+50.00	TO	550A+50.00									
	550A+50.00	TO	567A+20.20	1670.20	84	167	56	42	42	418	209	371
STA EQUATION	567A+20.20	BK=	567+20.20									
	567+20.20	TO	607+07.00	3986.80	199	399	133	100	100	997	498	886
BRIDGE OMISSION	607+07.00	TO	613+98.00									
	613+98.00	TO	705+00.00	9102.00	455	910	303	228	228	2276	1138	2023
BRIDGE OMISSION	705+00.00	TO	711+20.00									
	711+20.00	TO	721+10.00	990.00	50	99	33	25	25	248	124	220
STA EQUATION	721+10.00	BK =	647+10.00 AH									
	647+11.45	TO	656+14.00	902.55	45	90	30	23	23	226	113	201
TOTAL (RURAL)				54859.56	2743	5485	1827	1373	1373	13717	6858	12192

• F.A.I. 57 & 70 (I-57 & I-70)  
 •• EFFINGHAM & FAYETTE

FILE NAME =	USER NAME = steffenmk	DESIGNED -	REVISED -	<b>STATE OF ILLINOIS DEPARTMENT OF TRANSPORTATION</b>	<b>SCHEDULE OF QUANTITIES</b>				F.A.I. RTE.	SECTION	COUNTY	TOTAL SHEETS	SHEET NO.
pw:\IL\084EBIDINTEG\illinois.gov\PIWIDOT\Documents\IDOT Offices\District 7\Projects\74791\Drawings\CAD\Sheets\0774791-sht-schedule	PLotted SCALE = 100.0000' / in.	CHECKED -	REVISED -						•	D7 PAVT PRSV 2017-1	••VARIOUS	28	5
Default	PLOT DATE = 2/7/2017	DATE -	REVISED -		SCALE:	SHEET	OF	SHEETS	STA.	TO	STA.	ILLINOIS FED. AID PROJECT	
CONTRACT NO. 74791													

# I-70 EB (URBAN)

	STATION	TO	STATION	LENGTH FEET	BITUMINOUS MATERIALS ( TACK COAT) POUND	SHORT TERM PAVEMENT MARKING FOOT	SHORT TERM PAVEMENT MARKING REMOVAL SQ. FT.	RAISED REFLECTIVE PAYMENT MARKER REMOVAL EACH	RAISED REFLECTIVE PAVEMENT MARKER EACH	THERMOPLASTIC PAVEMENT MARKING-LINE 6"( WHITE SKIP-DASH) FOOT	PAVEMENT MARKING REMOVAL - GRINDING SQ. FT.	MICRO-SURFACING, SINGLE PASS, TYPE II, MIX SQ. YD.
	377+21.00	TO	380+43.00	322.00	16	32	11	8	8	81	40	72
BRIDGE NOT OMITTED	380+43.00	TO	380+71.00	28.00	1	3	1	1	1	7	4	6
	380+71.00	TO	397+80.00	1709.00	85	171	57	43	43	427	214	380
SECTION 26-1 ENDS												
SECTION 26-2 BEGINS												
	397+80.00	TO	399+14.06	134.06	7	13	4	3	3	34	17	30
STA EQUATION	399+14.06	BK =	398+86.83 AH									
	398+86.83	TO	455+67.29	5680.46	284	568	189	142	142	1,420	710	1,262
BRIDGE OMISSION	455+67.29	TO	456+93.02									
	456+93.02	TO	482+22.90	2529.88	126	253	84	63	63	632	316	562
BRIDGE OMISSION	482+22.90	TO	483+71.40									
	483+71.40	TO	519+40.32	3568.92	178	357	119	89	89	892	446	793
STA EQUATION	519+40.32	TO	519A+12.05 AH									
	519A+12.05	TO	523A+20.00	407.95	20	41	14	10	10	102	51	91
OMISSION NEW PAVMT	523A+20.00	TO	526A+50.00									
	526A+50.00	TO	537A+50.00	1100.00	55	110	37	28	28	275	138	244
TOTAL (URBAN)												
				15480.27	772	1548	516	387	387	3,870	1936	3440

• F.A.I. 57 & 70 (I-57 & I-70)  
 •• EFFINGHAM & FAYETTE

FILE NAME =	USER NAME = steffenk	DESIGNED -	REVISED -	<b>STATE OF ILLINOIS DEPARTMENT OF TRANSPORTATION</b>	<b>SCHEDULE OF QUANTITIES</b>				F.A.I. RTE.	SECTION	COUNTY	TOTAL SHEETS	SHEET NO.
pw:\IL\084EBIDINTEG.illinois.gov\PIDOT\Documents\DOT Offices\District 7\Projects\74791\Drawings\CAD\Sheets\0774791-sht-schedule	DESIGNED -	REVISED -	•						D7 PAVT PRSV 2017-1	••VARIOUS	28	6	
Default	PLOT SCALE = 100.0000' / in.	CHECKED -	REVISED -		SCALE:	SHEET	OF	SHEETS	STA.	TO	STA.	CONTRACT NO. 74791	
	PLOT DATE = 2/7/2017	DATE -	REVISED -		ILLINOIS FED. AID PROJECT								

I-70 WB (RURAL)				LENGTH	BITUMINOUS MATERIALS ( TACK COAT)	SHORT TERM PAVEMENT MARKING	SHORT TERM PAVEMENT MARKING REMOVAL	RAISED REFLECTIVE PAVEMENT MARKER REMOVAL	RAISED REFLECTIVE PAVEMENT MARKER	THERMOPLASTIC PAVEMENT MARKING-LINE 6"( WHITE SKIP-DASH)	PAVEMENT MARKING REMOVAL - GRINDING	MICRO-SURFACING, SINGLE PASS, TYPE II, MIX D
LOCATION	STATION	TO	STATION	FEET	POUND	FOOT	SO. FT.	EACH	EACH	FOOT	SO. FT.	SO. YD.
	3038+61.00	TO	3038+74.48	13.48	1	1	0	0	0	3	2	3
STA EQUATION	3038+74.48	BK =	1505+44.20 AH									
	1505+44.20	TO	1547+46.74	4202.54	210	420	140	105	105	1051	525	934
BRIDGE OMISSION	1547+46.74	TO	1550+78.04									
	1550+78.04	TO	1594+30.94	4352.90	218	435	145	109	109	1088	544	967
BRIDGE OMISSION	1594+30.94	TO	1595+36.19									
	1595+36.19	TO	1610+33.67	1497.48	75	150	50	37	37	374	187	333
STA EQUATION	1610+33.67	BK =	90+55.19 AH									
	90+55.19	TO	119+87.51	2932.32	147	293	98	73	73	733	367	652
BRIDGE OMISSION	119+87.51	TO	121+00.33									
	121+00.33	TO	125+75.19	474.86	24	47	16	12	12	119	59	106
BRIDGE OMISSION	125+75.19	TO	127+53.52									
	127+53.52	TO	138+00.84	1047.32	52	105	35	26	26	262	131	233
BRIDGE OMISSION	138+00.84	TO	140+34.04									
	140+34.04	TO	237+00.00	9665.96	483	967	322	242	242	2416	1208	2148
SECTION 26-0 ENDS												
SECTION 26-1 BEGINS												
	237+00.00	TO	377+21.00	14021.00	701	1402	467	351	351	3505	1753	3116
URBAN SECTION												
BRIDGE OMISSION	537+00.00	TO	550+50.00									
	550+50.00	TO	607+07.00	5657.00	283	566	188	141	141	1414	707	1257
BRIDGE OMISSION	607+07.00	TO	613+98.00									
	613+98.00	TO	705+00.00	9102.00	455	910	303	228	228	2276	1138	2023
BRIDGE OMISSION	705+00.00	TO	710+98.00									
	710+98.00	TO	721+10.00	1012.00	51	101	34	25	25	253	127	225
STA EQUATION	721+10.00	BK =	647+10.00 AH									
	647+10.00	TO	656+14.00	904.00	45	90	30	23	23	226	113	201
TOTAL RURAL				54882.86	2745	5487	1828	1372	1372	13720	6861	12198

• F.A.I. 57 & 70 (I-57 & I-70)  
 •• EFFINGHAM & FAYETTE

FILE NAME =	USER NAME = steffenmk	DESIGNED -	REVISED -	<b>STATE OF ILLINOIS DEPARTMENT OF TRANSPORTATION</b>	<b>SCHEDULE OF QUANTITIES</b>				F.A.I. RTE.	SECTION	COUNTY	TOTAL SHEETS	SHEET NO.
p:\11084EBIDINTEG\Illinois.gov\PIDOT\Documents\DOT Offices\District 7\Projects\74791\Drawings\CAD\Drawings\74791-sht-schedule	PLotted	CHECKED -	REVISED -						•	D7 PAVT PRSV 2017-1	••VARIOUS	28	7
Default	PLOT SCALE = 100.0000' / in.	DATE -	REVISED -		SCALE: SHEET OF SHEETS STA. TO STA.				CONTRACT NO. 74791				
	PLOT DATE = 2/7/2017								ILLINOIS FED. AID PROJECT				

I-70 WB (URBAN)

LOCATION	STATION	TO	STATION	LENGTH FEET	BITUMINOUS MATERIALS (TACK COAT) POUND	SHORT TERM PAVEMENT MARKING FOOT	SHORT TERM PAVEMENT MARKING REMOVAL SQ. FT.	RAISED REFLECTIVE PAVEMENT MARKER REMOVAL EACH	RAISED REFLECTIVE PAVEMENT MARKER EACH	THERMOPLASTIC PAVEMENT MARKING-LINE 6 (WHITE SKIP-DASH) FOOT	PAVEMENT MARKING REMOVAL - GRINDING SQ. FT.	MICRO-SURFACING, SINGLE PASS, TYPE II, MIX SQ. YD.
	377+21.00	TO	380+43.00	322.00	16	32	11	8	8	81	40	72
BRIDGE NOT OMITTED	380+43.00	TO	380+71.00	28.00	1	3	1	1	1	7	4	6
	380+71.00	TO	397+80.00	1709.00	85	171	57	43	43	427	214	380
SECTION 26-1 ENDS												
SECTION 26-2 BEGINS												
	397+80.00	TO	399+14.06	134.06	7	13	4	3	3	34	17	30
STA EQUATION	399+14.06	BK =	398+86.83 AH									
	398+86.83	TO	455+74.71	5687.88	284	569	189	142	142	1,422	711	1,264
BRIDGE OMISSION	455+74.71	TO	456+98.02									
	456+98.02	TO	482+19.76	2521.74	126	252	84	63	63	630	315	560
BRIDGE OMISSION	482+19.76	TO	483+68.26									
	483+68.26	TO	537+00.00	5331.74	267	533	178	133	133	1,333	666	1,185
TOTAL URBAN				15734.42	786	1573	524	393	393	3934	1967	3497

• F.A.I. 57 & 70 (I-57 & I-70)  
 •• EFFINGHAM & FAYETTE

FILE NAME =	USER NAME = steffenmk	DESIGNED -	REVISED -	<b>STATE OF ILLINOIS DEPARTMENT OF TRANSPORTATION</b>	<b>SCHEDULE OF QUANTITIES</b>				F.A.I. RTE.	SECTION	COUNTY	TOTAL SHEETS	SHEET NO.
p:\11\084EBIDINTEG.illinois.gov\PIWIDOT\Documents\DOT Offices\District 7\Projects\74791\Drawings\CAD\Sheets\0774791-sht-schedule	DESIGNED -	REVISED -	•						D7 PAVT PRSV 2017-1	••VARIOUS	28	8	
Default	PLOT SCALE = 100.0000' / in.	CHECKED -	REVISED -		SCALE: SHEET OF SHEETS STA. TO STA.				CONTRACT NO. 74791				
	PLOT DATE = 2/7/2017	DATE -	REVISED -		ILLINOIS FED. AID PROJECT								



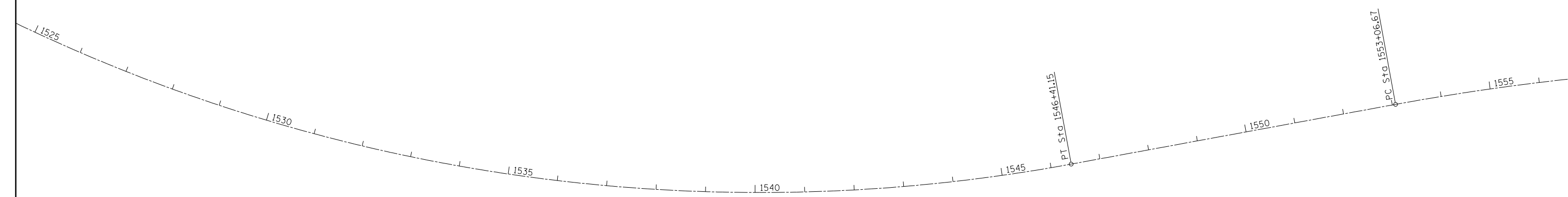
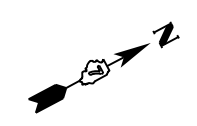
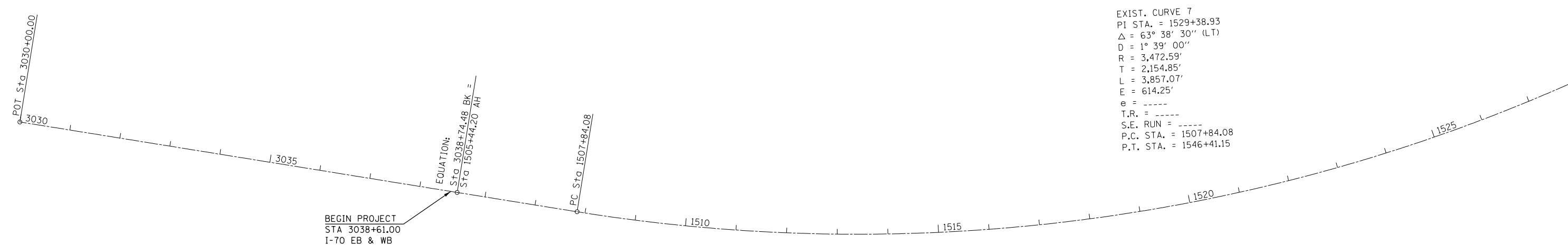
I-57 NB				LENGTH	BITUMINOUS MATERIALS ( TACK COAT)	SHORT TERM PAVEMENT MARKING	SHORT TERM PAVEMENT MARKING REMOVAL	RAISED REFLECTIVE PAVEMENT MARKER REMOVAL	RAISED REFLECTIVE PAVEMENT MARKER	THERMOPLASTIC PAVEMENT MARKING-LINE 6"( WHITE SKIP-DASH)	PAVEMENT MARKING REMOVAL - GRINDING	MICRO-SURFACING, SINGLE PASS, TYPE II, MIX D
LOCATION	STATION	ID	STATION	FEET	POUND	FOOT	SO. FT.	EACH	EACH	FOOT	SO. FT.	SO. YD.
	4495+58.00	TO	4582+77.63	8719.63	436	872	290	218	218	2,180	1,090	1,938
	4582+77.63	BK=	4609+69.68 AH									
	4609+69.68	TO	4625+61.43	1591.75	80	159	53	40	40	398	199	354
TOTAL				8719.63	516	1031	343	258	258	2578	1289	2292

• F.A.I. 57 & 70 (I-57 & I-70)  
 •• EFFINGHAM & FAYETTE

FILE NAME =	USER NAME = steffenmk	DESIGNED -	REVISED -	<b>STATE OF ILLINOIS DEPARTMENT OF TRANSPORTATION</b>	<b>SCHEDULE OF QUANTITIES</b>				F.A.I. RTE.	SECTION	COUNTY	TOTAL SHEETS	SHEET NO.
pw:\IL\084EBIDINTEG.illinois.gov\PIDOT\Documents\IDOT Offices\District 7\Projects\74791\Drawings\CAD\Sheets\0774791-sht-schedule	PLotted	REVISION	REVISION						•	D7 PAVT PRSV 2017-1	••VARIOUS	28	9
Default	PLOT SCALE = 100.0000' / in.	CHECKED -	REVISED -		SCALE:	SHEET	OF	SHEETS	STA.	TO	STA.	ILLINOIS FED. AID PROJECT	
	PLOT DATE = 2/7/2017	DATE -	REVISED -										

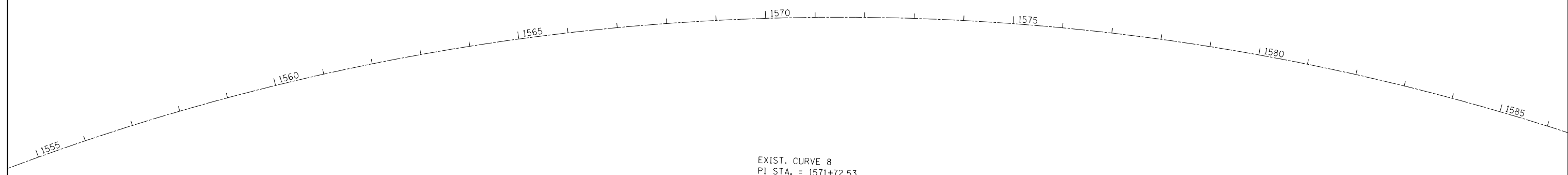
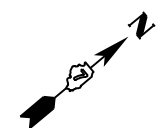


EXIST. CURVE 7  
 PI STA. = 1529+38.93  
 $\Delta$  = 63° 38' 30" (LT)  
 D = 1° 39' 00"  
 R = 3,472.59'  
 T = 2,154.85'  
 L = 3,857.07'  
 E = 614.25'  
 e = -----  
 T.R. = -----  
 S.E. RUN = -----  
 P.C. STA. = 1507+84.08  
 P.T. STA. = 1546+41.15

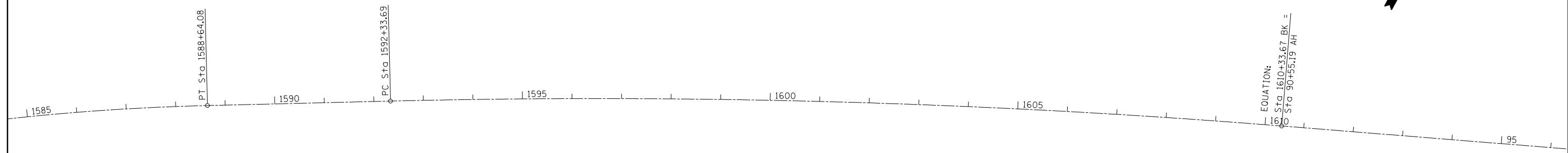


• F.A.I. 57 & 70 (I-57 & I-70)  
 •• EFFINGHAM & FAYETTE

FILE NAME =	USER NAME = steffenmk	DESIGNED -	REVISED -	<b>STATE OF ILLINOIS DEPARTMENT OF TRANSPORTATION</b>	<b>ALIGNMENT (I-70)</b>			F.A.I. RTE.	SECTION	COUNTY	TOTAL SHEETS	SHEET NO.
pw:\IL\084EBIDINTEG.illinois.gov\PWIDOT\Documents\IDOT Offices\District 7\Projects\74791\Drawings\CAD\Sheets\0774791-sh1-plan.dgn	PLOT SCALE = 200.0000' / in.	CHECKED -	REVISED -					•	D7 PAVT PRSV 2017-1	•• VARIOUS	28	10
Default	PLOT DATE = 2/7/2017	DATE -	REVISED -		SCALE:	SHEET	OF SHEETS	STA.	TO STA.	ILLINOIS FED. AID PROJECT		
										CONTRACT NO. 74791		



EXIST. CURVE 8  
 PI STA. = 1571+72.53  
 $\Delta$  = 42° 41' 20" (RT)  
 D = 1° 12' 00"  
 R = 4,774.74'  
 T = 1,865.86'  
 L = 3,557.41'  
 E = 351.62'  
 e = -----  
 T.R. = -----  
 S.E. RUN = -----  
 P.C. STA. = 1553+06.67  
 P.T. STA. = 1588+64.08



EXIST. CURVE 9  
 PI STA. = 1601+34.52  
 $\Delta$  = 6° 00' 00" (RT)  
 D = 0° 20' 00"  
 R = 17,188.76'  
 T = 900.82'  
 L = 1,799.99'  
 E = 23.59'  
 e = -----  
 T.R. = -----  
 S.E. RUN = -----  
 P.C. STA. = 1592+33.69  
 P.T. STA. = 1610+33.69

• F.A.I. 57 & 70 (I-57 & I-70)  
 •• EFFINGHAM & FAYETTE

FILE NAME =	USER NAME = steffenmk	DESIGNED -	REVISED -	<b>STATE OF ILLINOIS DEPARTMENT OF TRANSPORTATION</b>	<b>ALIGNMENT (I-70)</b>			F.A.I. RTE.	SECTION	COUNTY	TOTAL SHEETS	SHEET NO.	
pw:\IL\084EBIDINTEG.illinois.gov\PI\DOT\Documents\DOT Offices\District 7\Projects\74791\Drawings\CAD\Sheets\0774791-sht-plans.dgn	PLOT SCALE = 200.0000' / in.	CHECKED -	REVISED -					•	D7 PAVT PRSV 2017-1	•• VARIOUS	28	11	
Default	PLOT DATE = 2/7/2017	DATE -	REVISED -		SCALE:	SHEET	OF	SHEETS	STA.	TO	STA.	ILLINOIS FED. AID PROJECT	
CONTRACT NO. 74791													



95 100 105 110 115 120 125



125 130 135 140 145 150 155

• F.A.I. 57 & 70 (I-57 & I-70)  
•• EFFINGHAM & FAYETTE

FILE NAME =	USER NAME = steffenmk	DESIGNED -	REVISED -
p:\11084EBIDINTEG.illinois.gov\PIWIDOT\Documents\IDOT Offices\District 7\Projects\74791\Drawings\CADsheets\0774791-sht-pln.dgn		CHECKED -	REVISED -
Default	PLOT DATE = 2/7/2017	DATE -	REVISED -

**STATE OF ILLINOIS  
DEPARTMENT OF TRANSPORTATION**

**ALIGNMENT (I-70)**

SCALE: SHEET OF SHEETS STA. TO STA.

F.A.I. RTE.	SECTION	COUNTY	TOTAL SHEETS	SHEET NO.
•	D7 PAVT PRSV 2017-1	•• VARIOUS	28	12
			<b>CONTRACT NO. 74791</b>	
ILLINOIS FED. AID PROJECT				



POT Sta 171+83.52

155 160 165 170 175 180 185



185 190 195 200 205 210 215

- F.A.I. 57 & 70 (I-57 & I-70)
- EFFINGHAM & FAYETTE

FILE NAME =	USER NAME = steffenmk	DESIGNED -	REVISED -
p:\11\084EBIDINTEG\illinois.gov\PWIDOT\Documents\DOT Offices\District 7\Projects\74791\Drawings\CAD\Sheets\0774791-sht-pln.dgn		CHECKED -	REVISED -
Default	PLOT DATE = 2/7/2017	DATE -	REVISED -

**STATE OF ILLINOIS  
DEPARTMENT OF TRANSPORTATION**

<b>ALIGNMENT (I-70)</b>			
SCALE:	SHEET	OF	SHEETS
	STA.	TO	STA.

F.A.I. RTE.	SECTION	COUNTY	TOTAL SHEETS	SHEET NO.
•	D7 PAVT PRSV 2017-1	•• VARIOUS	28	13
			<b>CONTRACT NO. 74791</b>	
ILLINOIS FED. AID PROJECT				



215 220 225 230 235 240 245



245 250 255 260 265 270 275

- F.A.I. 57 & 70 (I-57 & I-70)
- EFFINGHAM & FAYETTE

FILE NAME =	USER NAME = steffenmk	DESIGNED -	REVISED -
p:\11\084EBIDINTEG.illinois.gov\PWIDOT\Documents\DOT Offices\District 7\Projects\74791\Drawings\CADsheets\0774791-sht-pln.dgn		CHECKED -	REVISED -
Default	PLOT DATE = 2/7/2017	DATE -	REVISED -

**STATE OF ILLINOIS  
DEPARTMENT OF TRANSPORTATION**

SCALE:		SHEET		OF		SHEETS		STA.		TO STA.	
		ALIGNMENT (I-70)									

F.A.I. RTE.	SECTION	COUNTY	TOTAL SHEETS	SHEET NO.
•	D7 PAVT PRSV 2017-1	•• VARIOUS	28	14
			<b>CONTRACT NO. 74791</b>	
ILLINOIS FED. AID PROJECT				



275 280 285 290 295 300 305



305 310 315 320 325 330 335

- F.A.I. 57 & 70 (I-57 & I-70)
- EFFINGHAM & FAYETTE

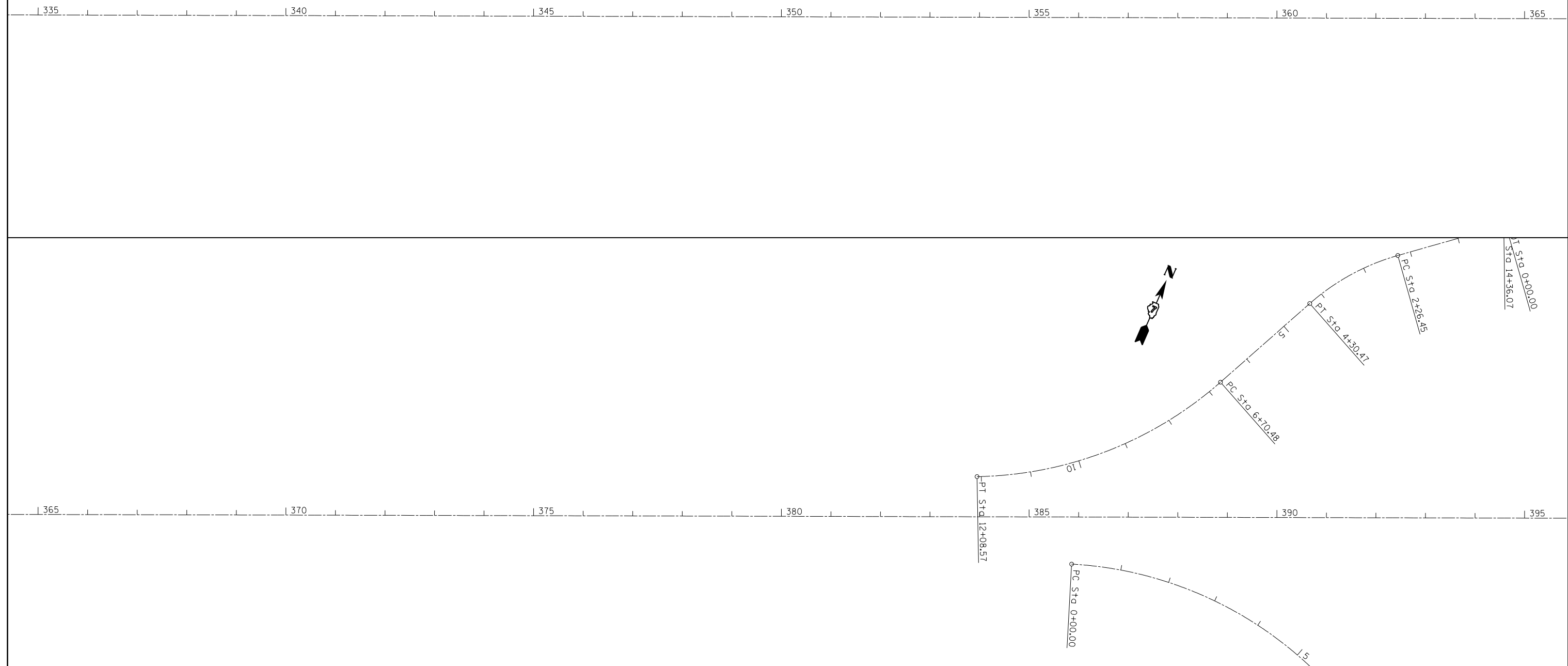
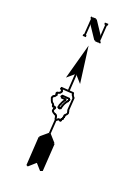
FILE NAME =	USER NAME = steffenmk	DESIGNED -	REVISED -
p:\11\084EBIDINTEG.illinois.gov\PWIDOT\Documents\IDOT Offices\District 7\Projects\74791\Drawings\CADsheets\0774791-sht-pln.dgn		CHECKED -	REVISED -
Default	PLOT DATE = 2/7/2017	DATE -	REVISED -

**STATE OF ILLINOIS  
DEPARTMENT OF TRANSPORTATION**

**ALIGNMENT (I-70)**

SCALE: SHEET OF SHEETS STA. TO STA.

F.A.I. RTE.	SECTION	COUNTY	TOTAL SHEETS	SHEET NO.
•	D7 PAVT PRSV 2017-1	•• VARIOUS	28	15
			<b>CONTRACT NO. 74791</b>	
ILLINOIS FED. AID PROJECT				



• F.A.I. 57 & 70 (I-57 & I-70)  
 •• EFFINGHAM & FAYETTE

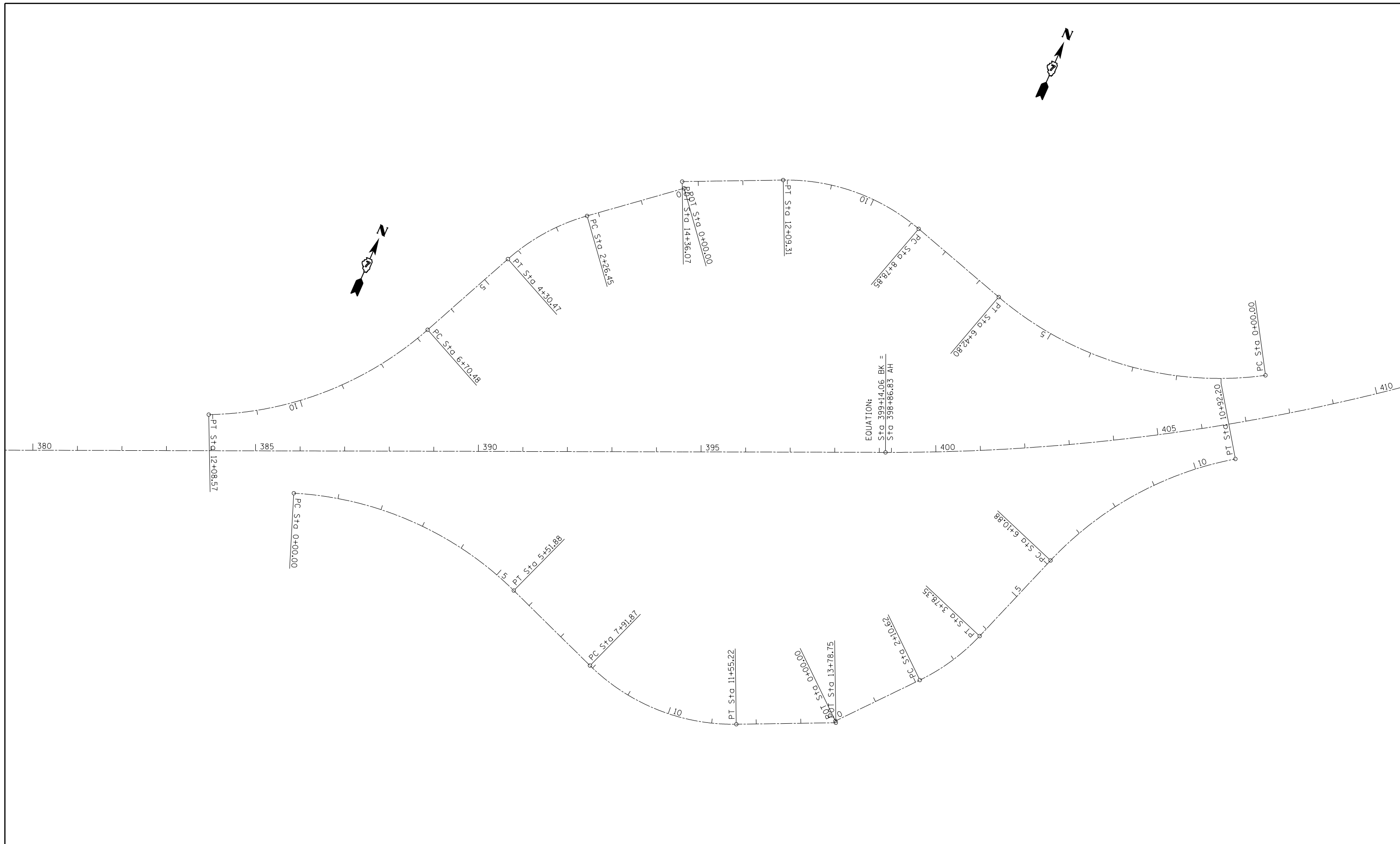
FILE NAME =	USER NAME = steffenmk	DESIGNED -	REVISED -
p:\11\084EBIDINTEG.illinois.gov\PWIDOT\Documents\IDOT Offices\District 7\Projects\74791\Drawings\CADsheets\0774791-sht-plan.dgn		CHECKED -	REVISED -
Default	PLOT DATE = 2/7/2017	DATE -	REVISED -

**STATE OF ILLINOIS  
 DEPARTMENT OF TRANSPORTATION**

<b>ALIGNMENT (I-70)</b>			
SCALE:	SHEET	OF SHEETS	STA. TO STA.

F.A.I. RTE.	SECTION	COUNTY	TOTAL SHEETS	SHEET NO.
•	D7 PAVT PRSV 2017-1	•• VARIOUS	28	16
			<b>CONTRACT NO. 74791</b>	
ILLINOIS FED. AID PROJECT				





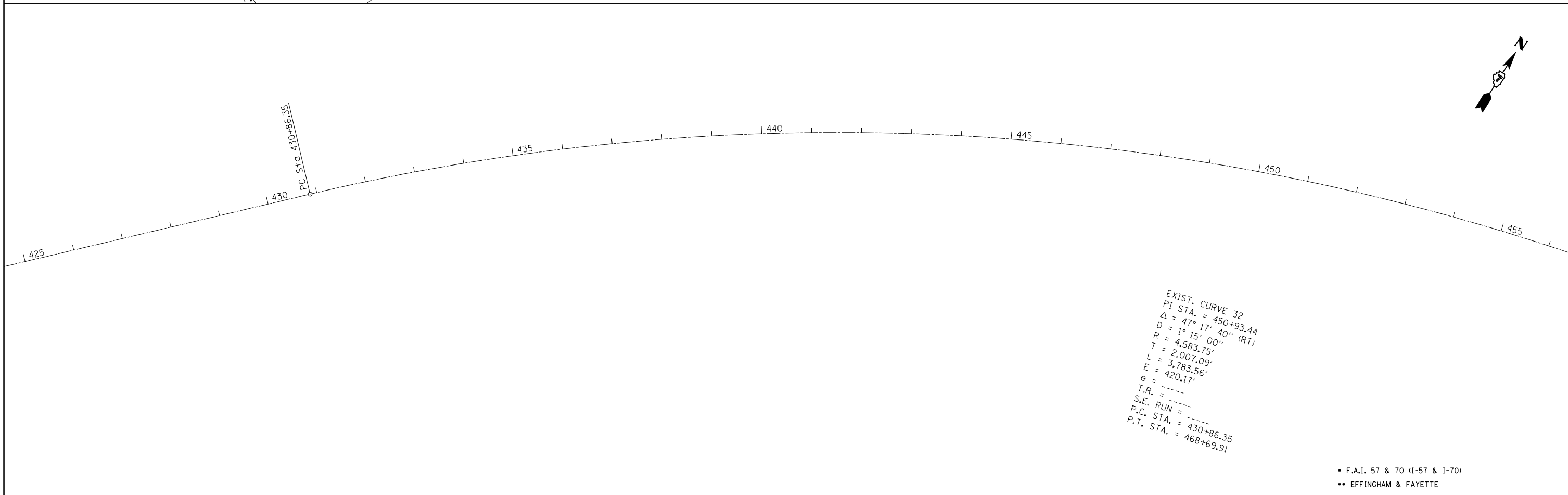
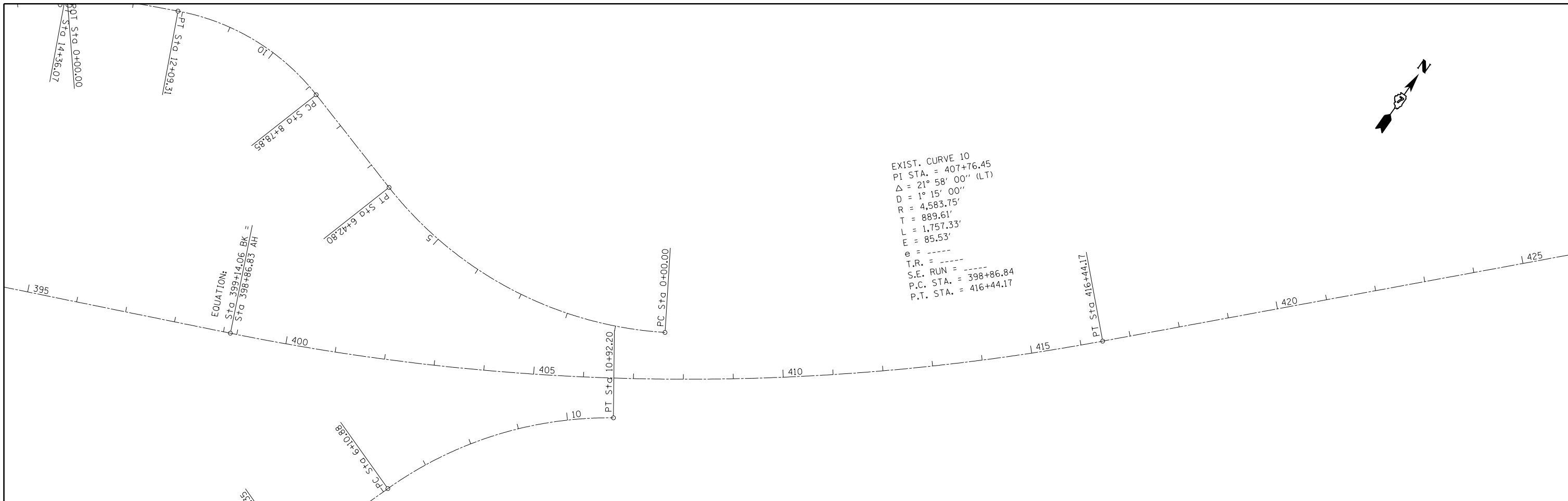
• F.A.I. 57 & 70 (I-57 & I-70)  
 •• EFFINGHAM & FAYETTE

FILE NAME =	USER NAME = steffenmk	DESIGNED -	REVISED -
p:\11084EBIDINTEG.illinois.gov\PIWIDOT\Documents\IDOT Offices\District 7\Projects\74791\Drawings\CADsheets\0774791-sht-plan.dgn		REVISION	REVISED -
Default	PLOT SCALE = 200.0000' / in.	CHECKED -	REVISED -
	PLOT DATE = 2/7/2017	DATE -	REVISED -

**STATE OF ILLINOIS  
 DEPARTMENT OF TRANSPORTATION**

<b>ALIGNMENT (I-70)</b>				
SCALE:	SHEET	OF	SHEETS	STA. TO STA.

F.A.I. RTE.	SECTION	COUNTY	TOTAL SHEETS	SHEET NO.
•	D7 PAVT PRSV 2017-1	•• VARIOUS	28	17
			<b>CONTRACT NO. 74791</b>	
ILLINOIS FED. AID PROJECT				



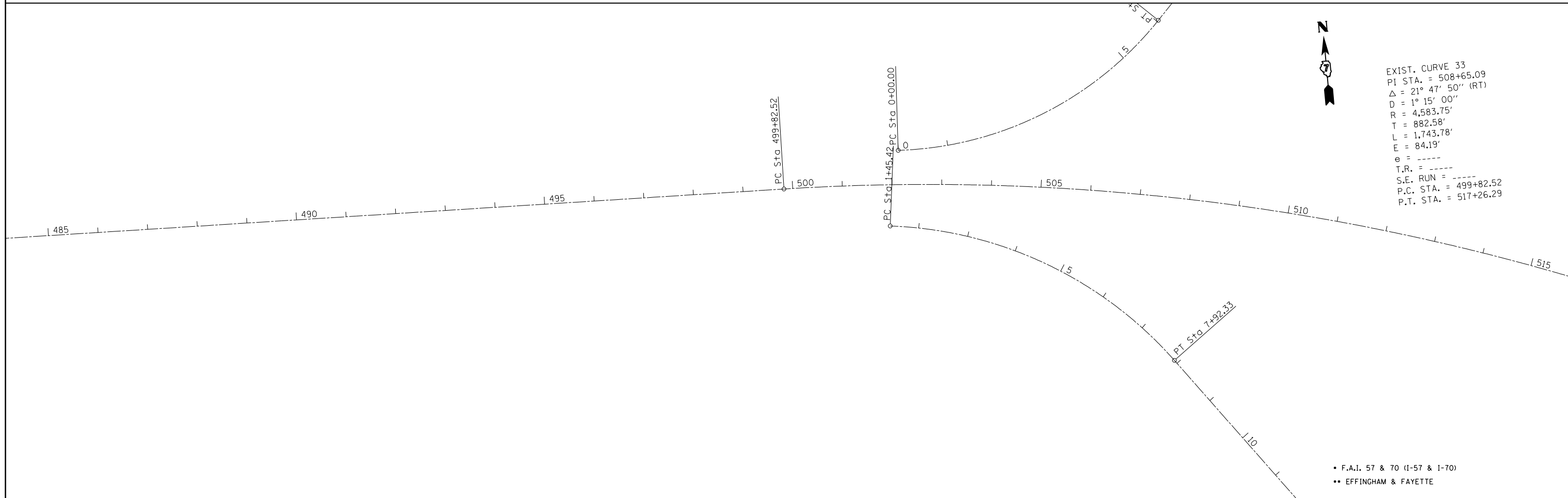
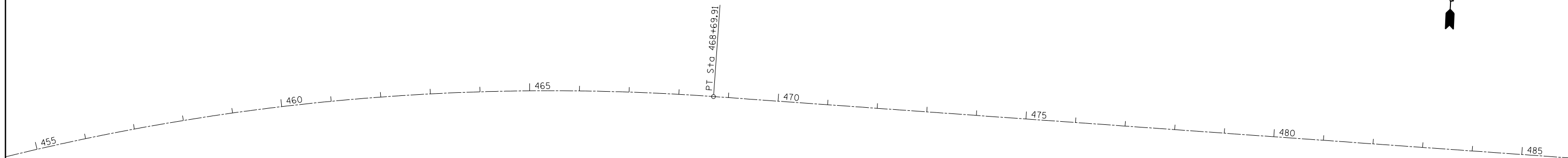
• F.A.I. 57 & 70 (I-57 & I-70)  
 •• EFFINGHAM & FAYETTE

FILE NAME =	USER NAME = steffenmk	DESIGNED -	REVISED -
pw:\IL\084EBIDINTEG\illinois.gov\PWIDOT\Documents\IDOT Offices\District 7\Projects\74791\Drawings\CAD\Sheets\0774791-sht-plans.dgn		REVISION	REVISED -
Default	PLOT SCALE = 200.0000' / in.	CHECKED -	REVISED -
	PLOT DATE = 2/7/2017	DATE -	REVISED -

**STATE OF ILLINOIS  
 DEPARTMENT OF TRANSPORTATION**

SCALE:		SHEET OF SHEETS		STA.	TO STA.
		ALIGNMENT (I-70)			

F.A.I. RTE.	SECTION	COUNTY	TOTAL SHEETS	SHEET NO.
•	D7 PAVT PRSV 2017-1	•• VARIOUS	28	18
			CONTRACT NO. 74791	
ILLINOIS FED. AID PROJECT				



EXIST. CURVE 33  
 PI STA. = 508+65.09  
 $\Delta$  = 21° 47' 50" (RT)  
 D = 1° 15' 00"  
 R = 4,583.75'  
 T = 882.58'  
 L = 1,743.78'  
 E = 84.19'  
 e = ----  
 T.R. = ----  
 S.E. RUN = ----  
 P.C. STA. = 499+82.52  
 P.T. STA. = 517+26.29

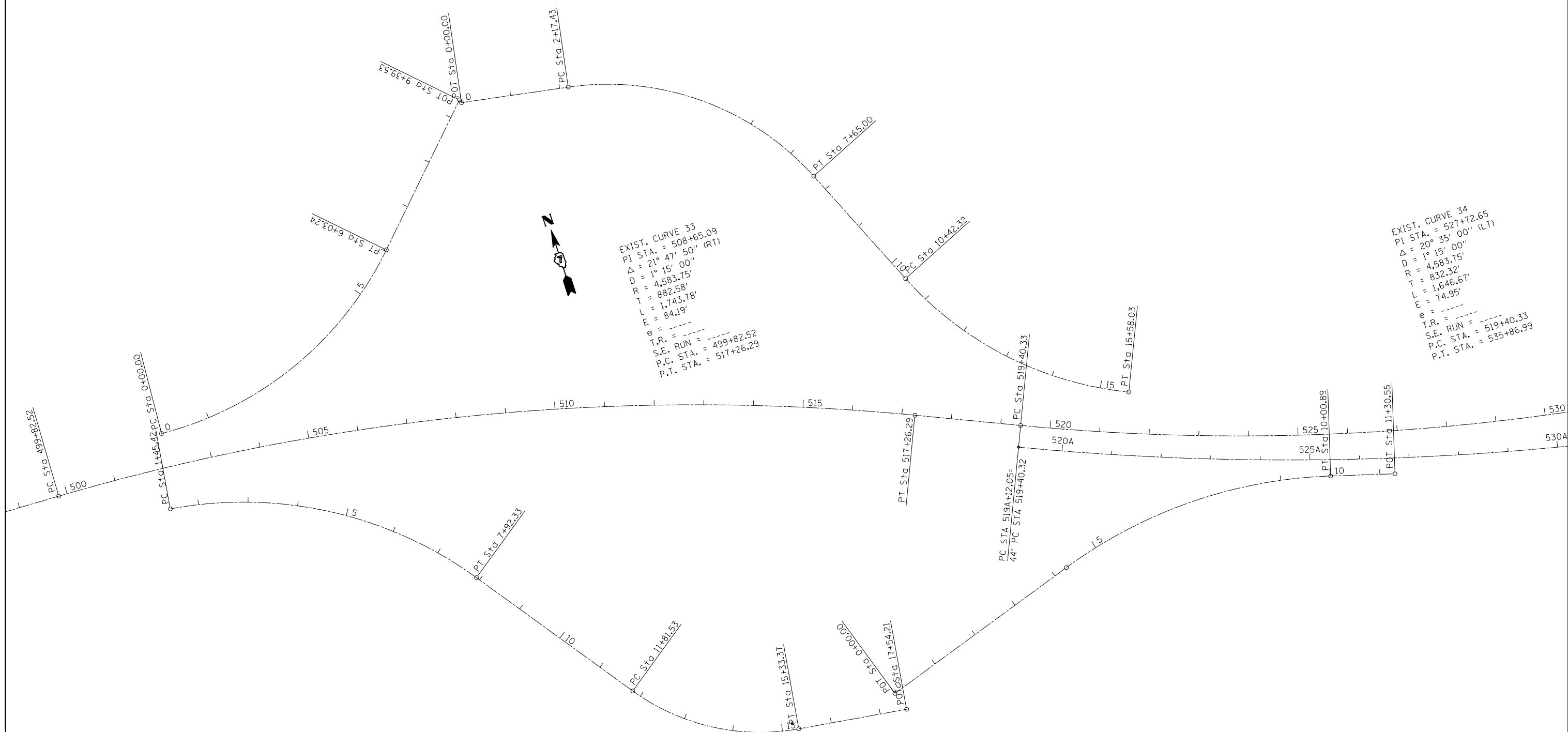
• F.A.I. 57 & 70 (I-57 & I-70)  
 •• EFFINGHAM & FAYETTE

FILE NAME =	USER NAME = steffenmk	DESIGNED -	REVISED -
p:\11\084EBIDINTEG.illinois.gov\PI\DOT\Documents\DOT Offices\District 7\Projects\74791\Drawings\CAD\Sheets\0774791-sht-pln.dgn		CHECKED -	REVISED -
Default	PLOT DATE = 2/7/2017	DATE -	REVISED -

**STATE OF ILLINOIS  
 DEPARTMENT OF TRANSPORTATION**

<b>ALIGNMENT (I-70)</b>			
SCALE:	SHEET	OF SHEETS	STA. TO STA.

F.A.I. RTE.	SECTION	COUNTY	TOTAL SHEETS	SHEET NO.
•	D7 PAVT PRSV 2017-1	•• VARIOUS	28	19
			<b>CONTRACT NO. 74791</b>	
ILLINOIS FED. AID PROJECT				



• F.A.I. 57 & 70 (I-57 & I-70)  
 •• EFFINGHAM & FAYETTE

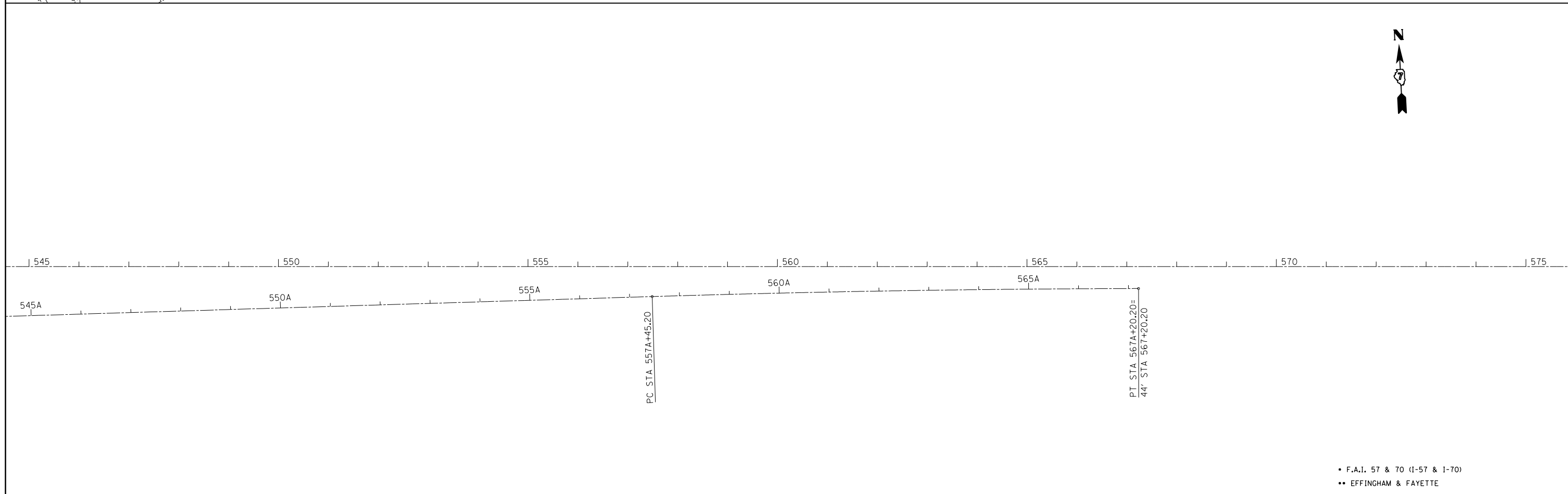
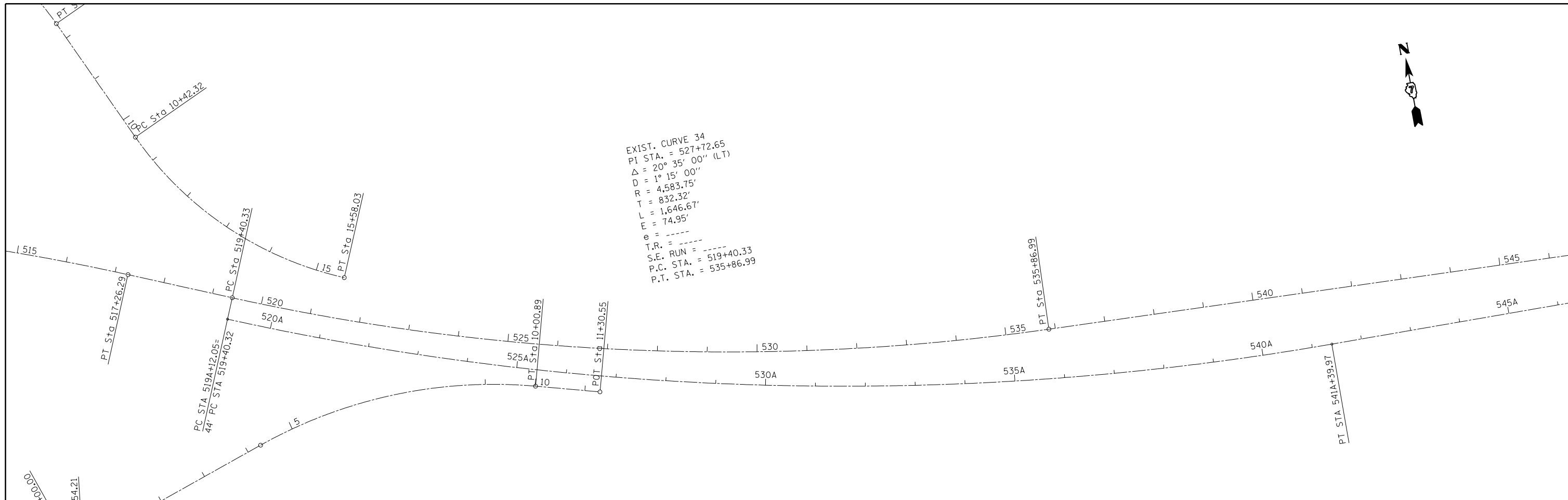
FILE NAME =	USER NAME = steffenmk	DESIGNED -	REVISED -
pw:\IL\084EBIDINTEG.illinois.gov\PIDOT\Documents\DOT Offices\District 7\Projects\74791\Drawings\CADsheets\0774791-sht-plan.dgn		REVISION	REVISED -
Default	PLOT SCALE = 200.0000' / in.	CHECKED -	REVISED -
	PLOT DATE = 2/7/2017	DATE -	REVISED -

**STATE OF ILLINOIS  
 DEPARTMENT OF TRANSPORTATION**

**ALIGNMENT (I-70)**

SCALE: SHEET OF SHEETS STA. TO STA.

F.A.I. RTE.	SECTION	COUNTY	TOTAL SHEETS	SHEET NO.
•	D7 PAVT PRSV 2017-1	•• VARIOUS	28	20
			<b>CONTRACT NO. 74791</b>	
ILLINOIS FED. AID PROJECT				



• F.A.I. 57 & 70 (I-57 & I-70)  
 •• EFFINGHAM & FAYETTE

FILE NAME =	USER NAME = steffenmk	DESIGNED -	REVISED -	<b>STATE OF ILLINOIS DEPARTMENT OF TRANSPORTATION</b>	<b>ALIGNMENT (I-70)</b>			F.A.I. RTE.	SECTION	COUNTY	TOTAL SHEETS	SHEET NO.
pw:\IL\084EBIDINTEG.illinois.gov\PWIDOT\Documents\DOT Offices\District 7\Projects\74791\Drawings\CAD\Sheets\0774791-sht-plans.dgn	PLOT SCALE = 200.0000' / in.	CHECKED -	REVISED -					•	D7 PAVT PRSV 2017-1	•• VARIOUS	28	21
Default	PLOT DATE = 2/7/2017	DATE -	REVISED -		SCALE:	SHEET	OF SHEETS	STA.	TO STA.	ILLINOIS FED. AID PROJECT		
<b>CONTRACT NO. 74791</b>												



575 580 585 590 595 600 605



605 610 615 620 625 630 635

- F.A.I. 57 & 70 (I-57 & I-70)
- EFFINGHAM & FAYETTE

FILE NAME =	USER NAME = steffenmk	DESIGNED -	REVISED -
p:\11\084EBIDINTEG.illinois.gov\PIWIDOT\Documents\IDOT Offices\District 7\Projects\74791\Drawings\CAD\Sheets\0774791-sht-pln.dgn		CHECKED -	REVISED -
Default	PLOT DATE = 2/7/2017	DATE -	REVISED -

**STATE OF ILLINOIS  
DEPARTMENT OF TRANSPORTATION**

**ALIGNMENT (I-70)**

SCALE: SHEET OF SHEETS STA. TO STA.

F.A.I. RTE.	SECTION	COUNTY	TOTAL SHEETS	SHEET NO.
•	D7 PAVT PRSV 2017-1	•• VARIOUS	28	22
			<b>CONTRACT NO. 74791</b>	
ILLINOIS FED. AID PROJECT				



635 640 645 650 655 660 665



665 670 675 680 685 690 695

- F.A.I. 57 & 70 (I-57 & I-70)
- EFFINGHAM & FAYETTE

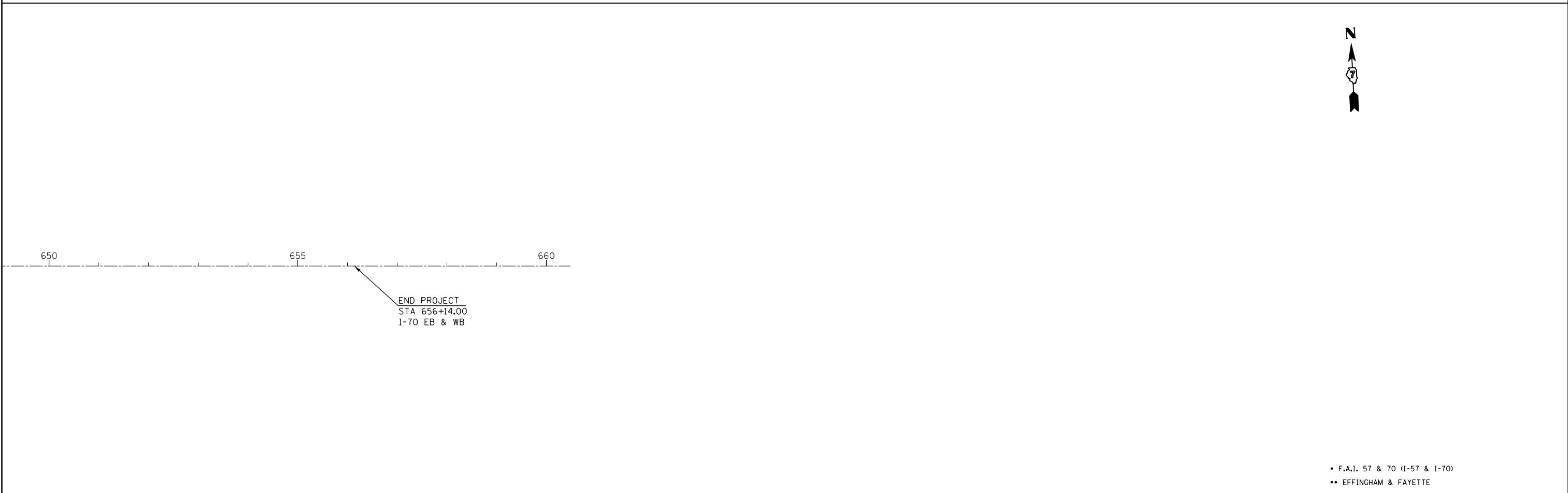
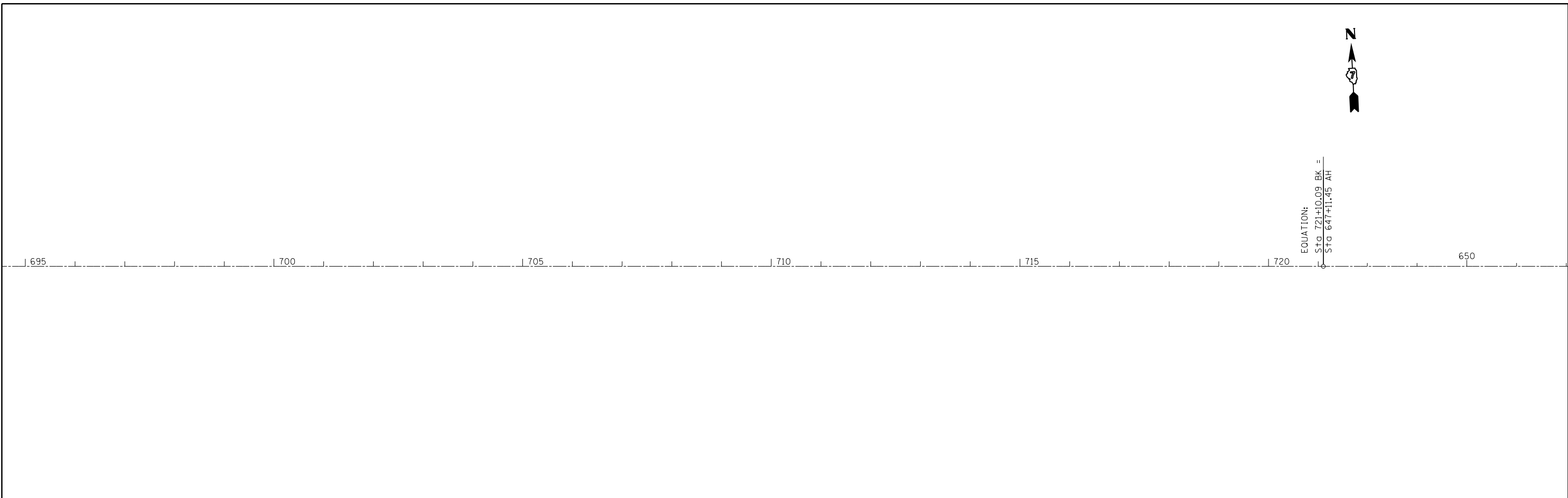
FILE NAME =	USER NAME = steffenmk	DESIGNED -	REVISED -
p:\11084EBIDINTEG.illinois.gov\PIWIDOT\Documents\IDOT Offices\District 7\Projects\74791\Drawings\CADsheets\0774791-sht-pln.dgn		CHECKED -	REVISED -
Default	PLOT DATE = 2/7/2017	DATE -	REVISED -

**STATE OF ILLINOIS  
DEPARTMENT OF TRANSPORTATION**

**ALIGNMENT (I-70)**

SCALE: SHEET OF SHEETS STA. TO STA.

F.A.I. RTE.	SECTION	COUNTY	TOTAL SHEETS	SHEET NO.
•	D7 PAVT PRSV 2017-1	•• VARIOUS	28	23
			<b>CONTRACT NO. 74791</b>	
ILLINOIS FED. AID PROJECT				



• F.A.I. 57 & 70 (I-57 & I-70)  
 •• EFFINGHAM & FAYETTE

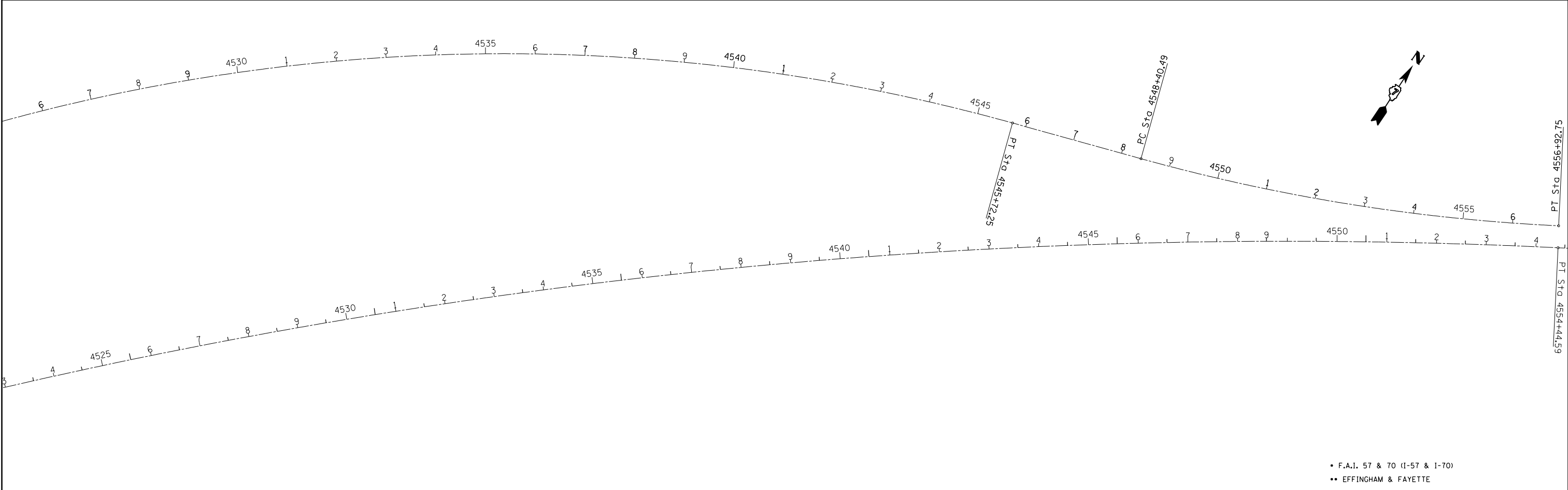
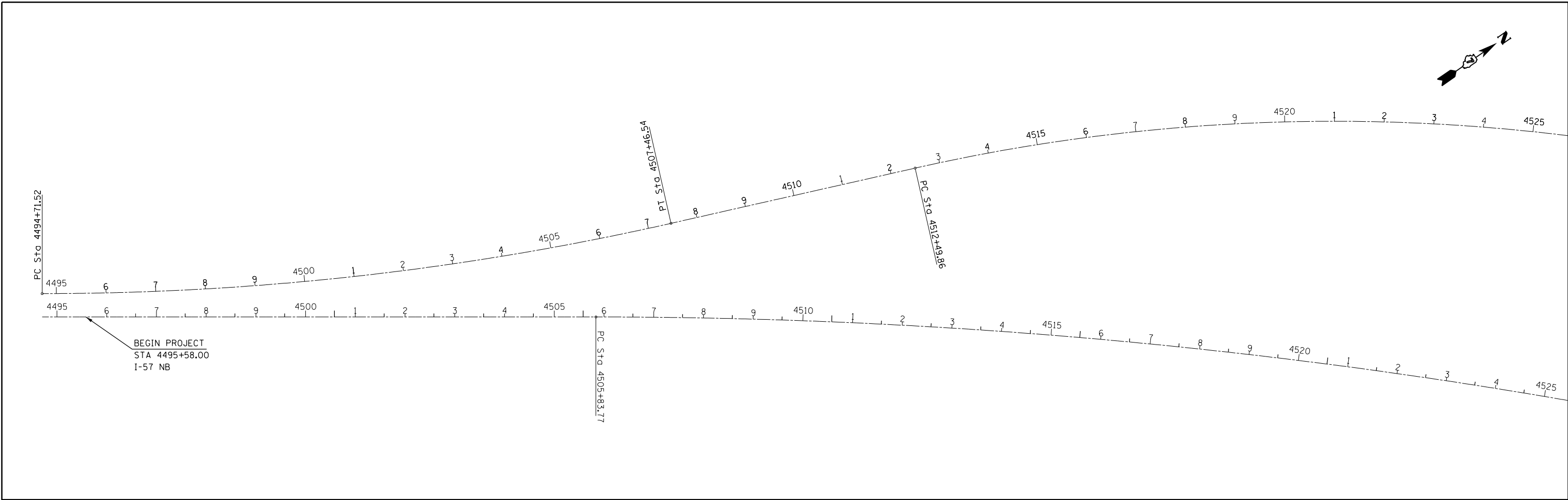
FILE NAME =	USER NAME = steffenmk	DESIGNED -	REVISED -
p:\11084EBIDINTEG.illinois.gov\PIWIDOT\Documents\IDOT Offices\District 7\Projects\74791\Drawings\CAD\Sheets\0774791-sht-plan.dgn		CHECKED -	REVISED -
Default	PLOT DATE = 2/7/2017	DATE -	REVISED -

**STATE OF ILLINOIS  
 DEPARTMENT OF TRANSPORTATION**

<b>ALIGNMENT (I-70)</b>			
SCALE:	SHEET	OF	SHEETS
	STA.	TO	STA.

F.A.I. RTE.	SECTION	COUNTY	TOTAL SHEETS	SHEET NO.
•	D7 PAVT PRSV 2017-1	•• VARIOUS	28	24
			<b>CONTRACT NO. 74791</b>	
ILLINOIS FED. AID PROJECT				





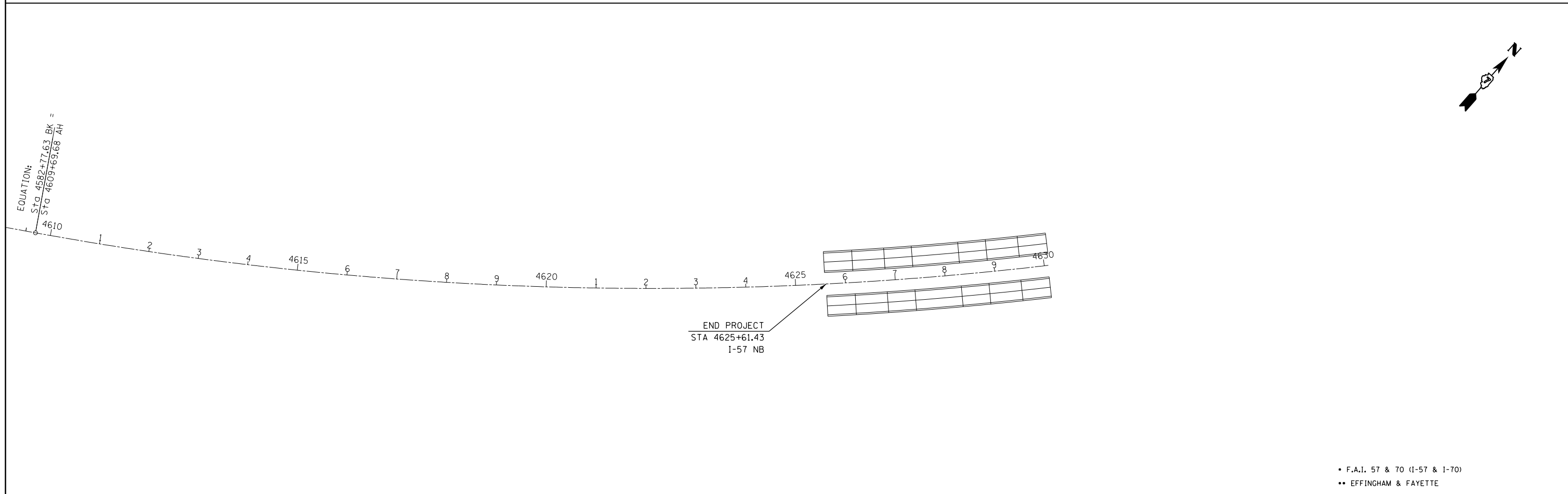
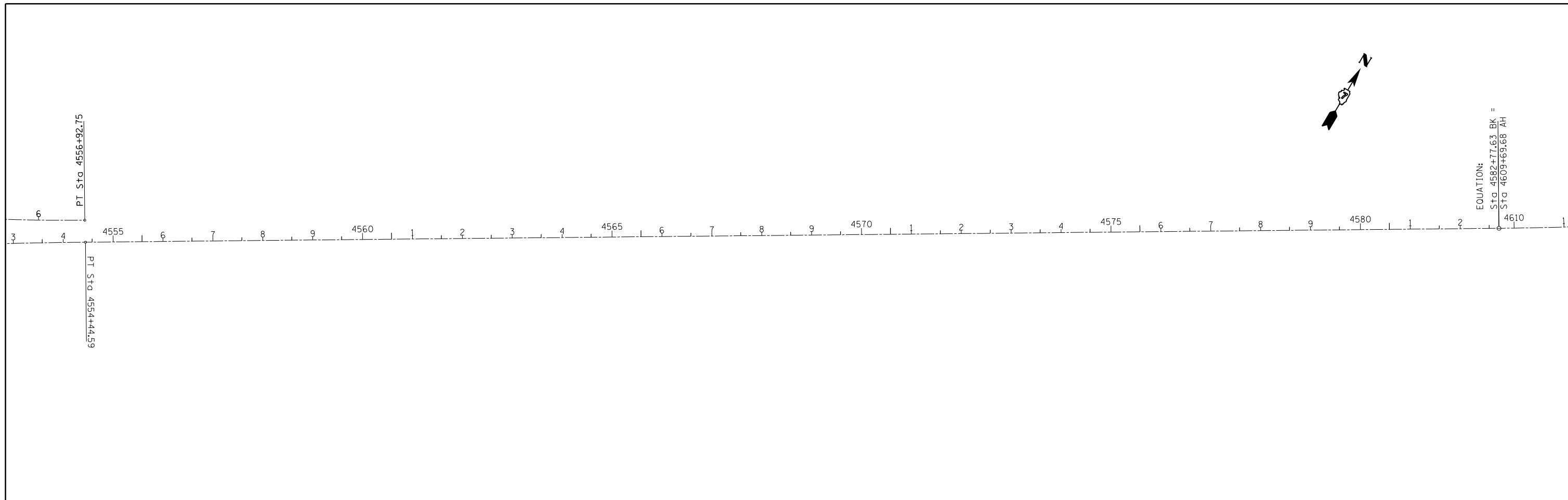
• F.A.I. 57 & 70 (I-57 & I-70)  
 •• EFFINGHAM & FAYETTE

FILE NAME =	USER NAME = steffenmk	DESIGNED -	REVISED -
pw:\IL\084EBIDINTEG\illinois.gov\PIWIDOT\Documents\DOT Offices\District 7\Projects\74791\Drawings\CADsheets\0774791-sht-plans.dgn		REVISION	REVISED -
Default	PLOT SCALE = 200.0000' / in.	CHECKED -	REVISED -
	PLOT DATE = 2/7/2017	DATE -	REVISED -

**STATE OF ILLINOIS  
 DEPARTMENT OF TRANSPORTATION**

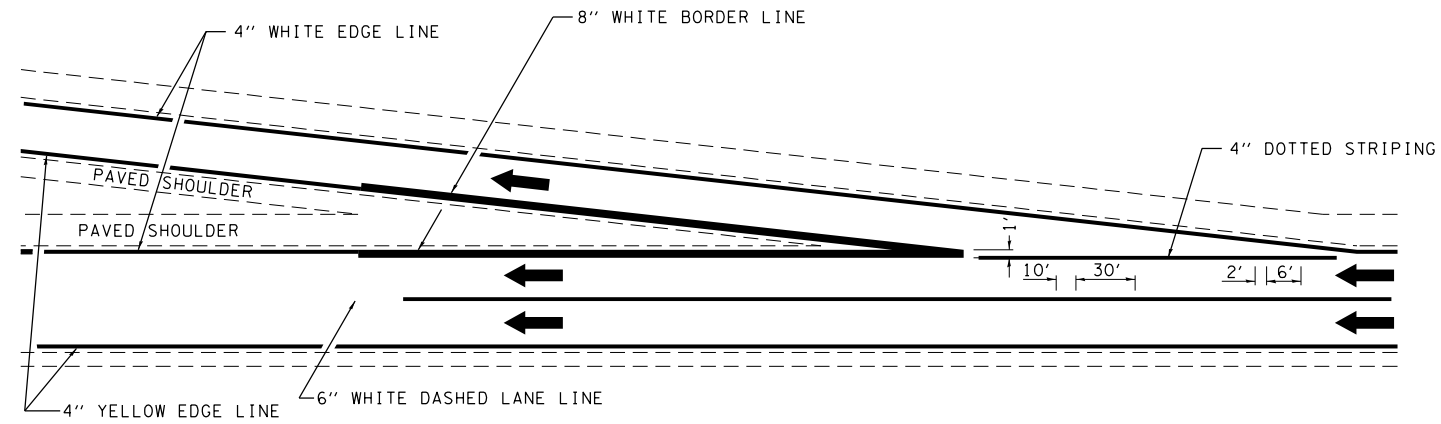
<b>ALIGNMENT (I-57)</b>				
SCALE:	SHEET	OF	SHEETS	STA. TO STA.

F.A.I. RTE.	SECTION	COUNTY	TOTAL SHEETS	SHEET NO.
•	D7 PAVT PRSV 2017-1	•• VARIOUS	28	25
			<b>CONTRACT NO. 74791</b>	
ILLINOIS FED. AID PROJECT				

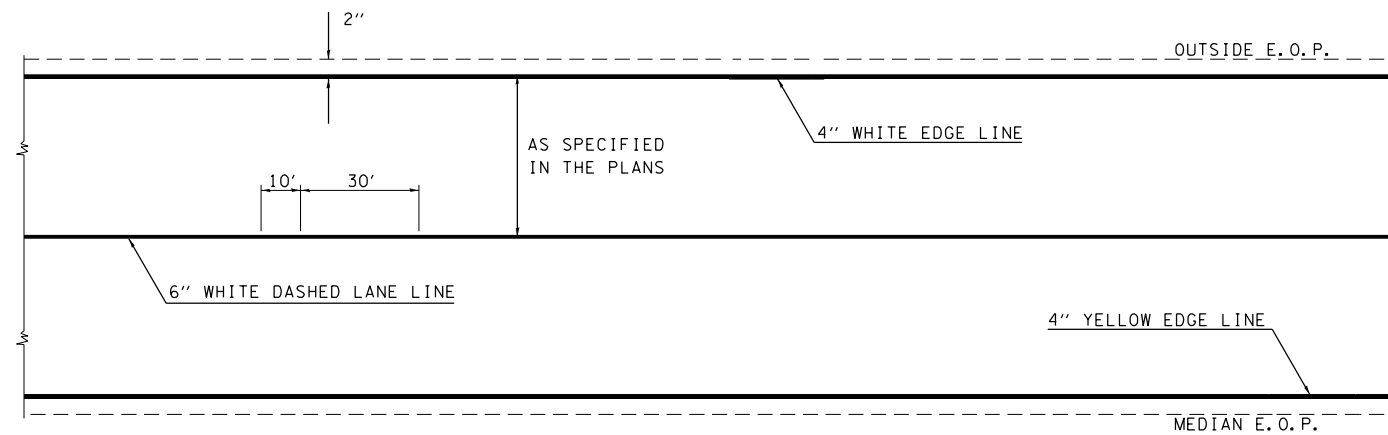


• F.A.I. 57 & 70 (I-57 & I-70)  
 •• EFFINGHAM & FAYETTE

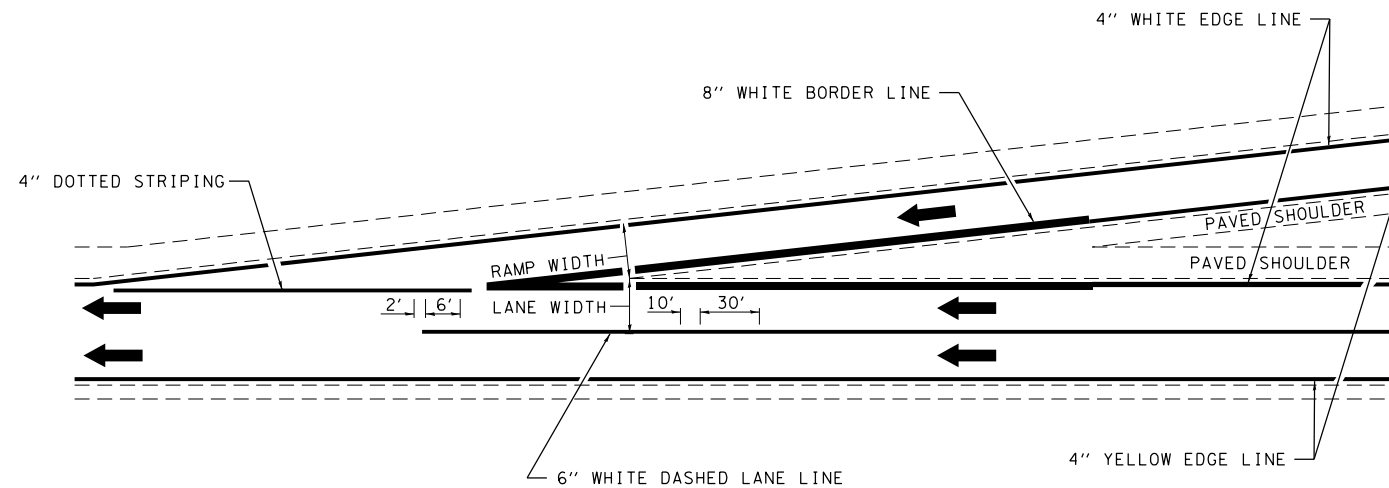
FILE NAME =	USER NAME = steffenmk	DESIGNED -	REVISED -	<b>STATE OF ILLINOIS DEPARTMENT OF TRANSPORTATION</b>	<b>ALIGNMENT (I-57)</b>			F.A.I. RTE.	SECTION	COUNTY	TOTAL SHEETS	SHEET NO.
pw:\IL\084EBIDINTEG.illinois.gov\PWIDOT\Documents\DOT Offices\District 7\Projects\74791\Drawings\CAD\Sheets\0774791-sht-pln.dgn	PLOT SCALE = 200.0000' / in.	CHECKED -	REVISED -					•	D7 PAVT PRSV 2017-1	•• VARIOUS	28	26
Default	PLOT DATE = 2/7/2017	DATE -	REVISED -		SCALE:	SHEET	OF	SHEETS	STA.	TO STA.	ILLINOIS FED. AID PROJECT	
CONTRACT NO. 74791												



TYPICAL EXIT RAMP MARKING



TYPICAL CENTERLINE & EDGELINE MARKINGS



TYPICAL ENTRANCE RAMP MARKING

• F.A.I. 57 & 70 (I-57 & I-70)  
 •• EFFINGHAM & FAYETTE NOT TO SCALE

**DISTRICT 7 DETAIL NO. 7800002**

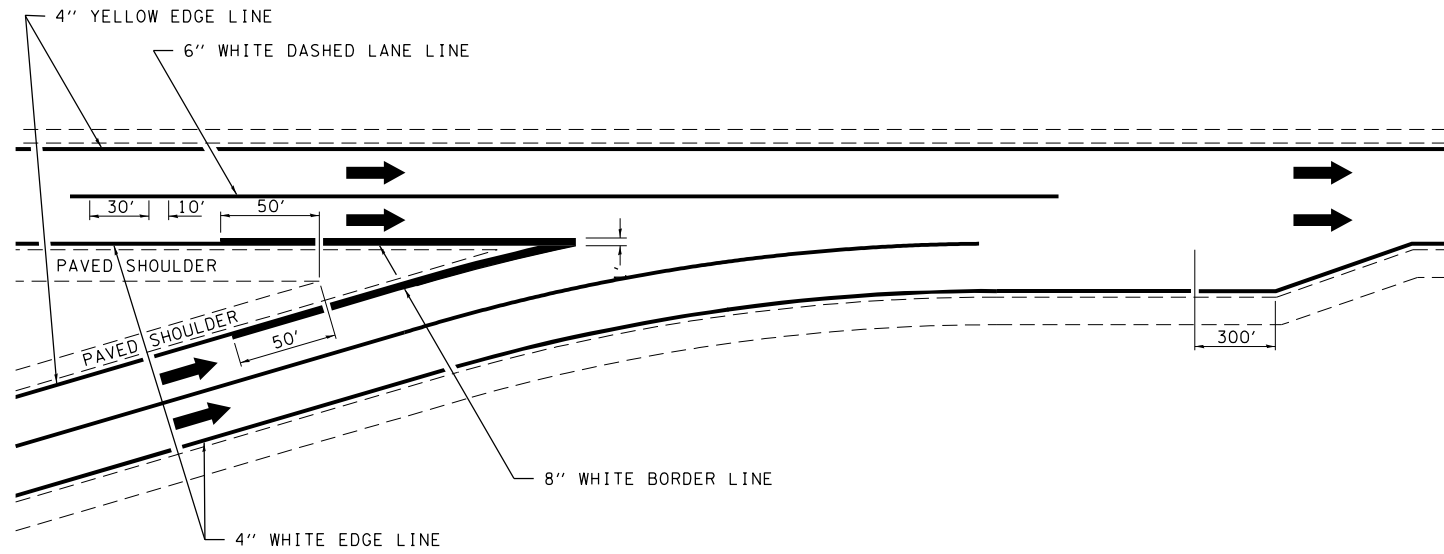
FILE NAME =	USER NAME = steffenmk	DESIGNED -	REVISED - DRM 08-04
p:\11\084EBIDINTEG.illinois.gov\PIWIDOT\Documents\IDOT Offices\District 7\Projects\74791\Drawings\CADsheets\0774791-shd-details.dwg		DRAWN -	REVISED - MKS 04-08
	PLOT SCALE = 100.0000' / in.	CHECKED -	REVISED - DRM 01-09
	PLOT DATE = 2/7/2017	DATE -	REVISED - DRM 12-10

**STATE OF ILLINOIS  
 DEPARTMENT OF TRANSPORTATION**

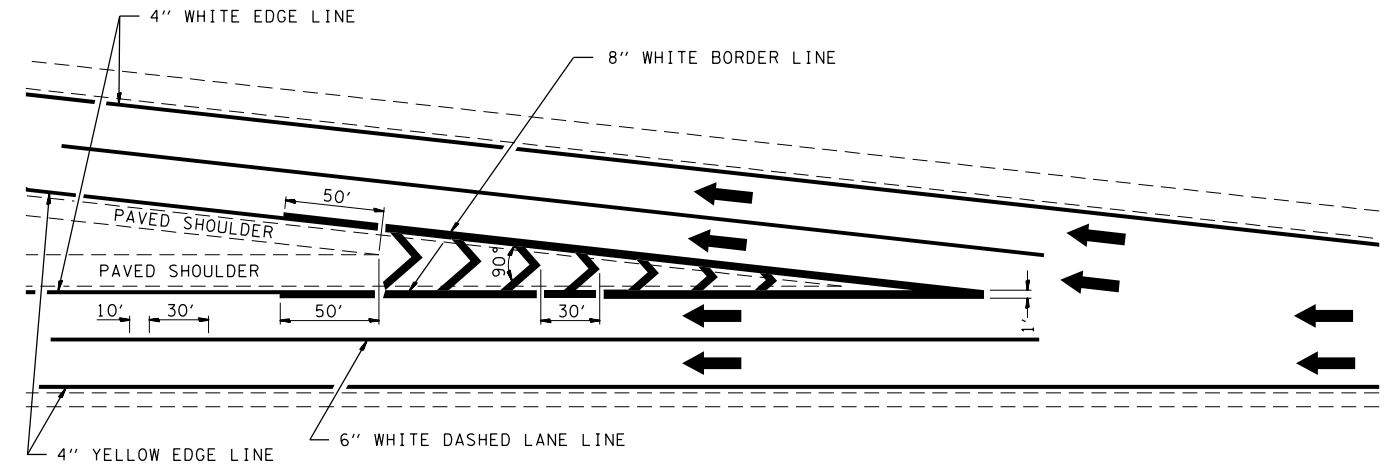
**TYPICAL APPLICATIONS OF INTERSTATE PAVEMENT MARKING**

SCALE: N/A SHEET NO. 1 OF 2 SHEETS STA. TO STA.

F.A.I. RTE.	SECTION	COUNTY	TOTAL SHEETS	SHEET NO.
•	DT PAVT PRSV 2017-1	••VARIOUS	28	27
			CONTRACT NO. 74791	
FED. ROAD DIST. NO.		ILLINOIS FED. AID PROJECT		

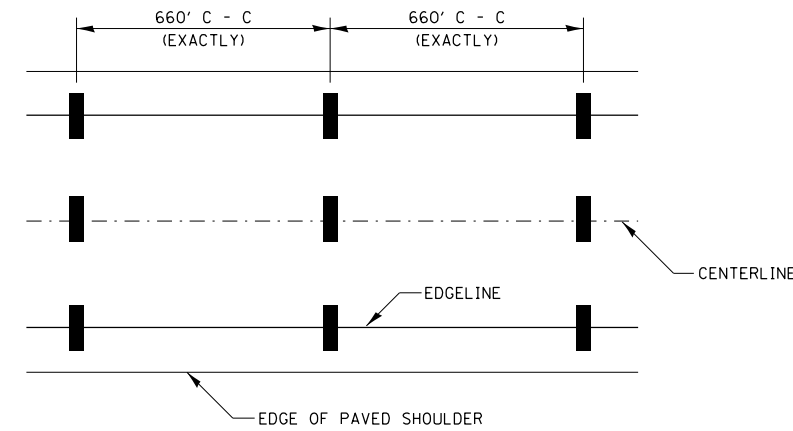


TYPICAL CONVERGENCE MARKING

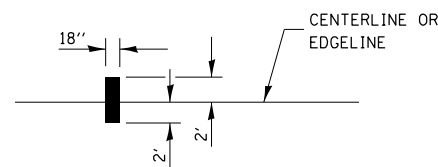


TYPICAL DIVERGENCE MARKING

AERIAL SPEED CHECK ZONES



IT WILL BE NECESSARY TO HAVE A REPRESENTATIVE OF THE STATE POLICE PRESENT SO THAT THE ACCURACY OF MEASUREMENT CAN BE ATTESTED TO IN COURT.



• F.A.I. 57 & 70 (I-57 & I-70)  
•• EFFINGHAM & FAYETTE NOT TO SCALE

DISTRICT 7 DETAIL NO. 7800002

FILE NAME =	USER NAME = steffenmk	DESIGNED -	REVISED - MMO 12-99
p:\11\084EBIDINTEG\illinois.gov\PIWIDOT\Documents\IDOT Offices\District 7\Projects\74791\Drawings\CAD\Sheets\0774791-shd-details.dwg		CHECKED -	REVISED - DRM 08-04
		DATE -	REVISED - MKS 04-08
			REVISED - DRM 01-09

STATE OF ILLINOIS  
DEPARTMENT OF TRANSPORTATION

TYPICAL APPLICATIONS OF INTERSTATE PAVEMENT MARKING

SCALE: N/A SHEET NO. 2 OF 2 SHEETS STA. TO STA.

F.A.I. RTE.	SECTION	COUNTY	TOTAL SHEETS	SHEET NO.
•	DT PAVT PRSV 2017-1	••VARIOUS	28	28
			CONTRACT NO. 74791	
FED. ROAD DIST. NO.		ILLINOIS FED. AID PROJECT		