

STATE OF ILLINOIS
CITY OF LITCHFIELD

F.A.U. RTE.	SECTION	COUNTY	TOTAL SHEETS	SHEET NO.
----	15-00036-00-PV	MONTGOMERY	23	1
		ILLINOIS		CONTRACT NO. 93683

INDEX OF SHEETS

- 1 COVER SHEET
- 2 GENERAL NOTES AND MIXTURE REQUIREMENTS
- 3 SUMMARY OF QUANTITIES
- 4 TYPICAL SECTIONS
- 5 SCHEDULE OF QUANTITIES
- 6 ALIGNMENT, HORIZONTAL CONTROL & BENCHMARKS
- 7-9 PLAN AND PROFILE SHEETS
- 10 MAINTENANCE OF TRAFFIC PLAN
- 11-13 INTERSECTION DETAILS
- 14-15 MISCELLANEOUS DETAILS
- 16-23 CROSS SECTIONS

IDOT HIGHWAY STANDARDS

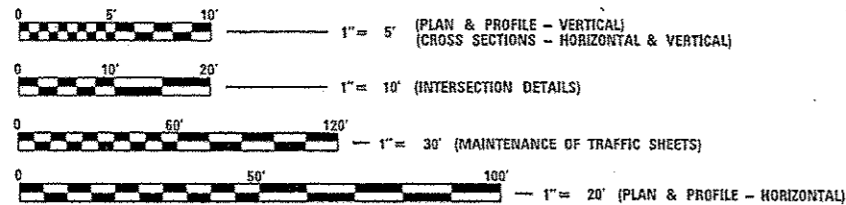
- 000001-06 STANDARD SYMBOLS, ABBREVIATIONS AND PATTERNS
- 280001-07 TEMPORARY EROSION CONTROL SYSTEMS
- 424001-09 PERPENDICULAR CURB RAMPS FOR SIDEWALKS
- 542301-03 PRECAST REINFORCED CONCRETE FLARED END SECTION
- 602001-02 CATCH BASIN TYPE A
- 602301-04 INLET, TYPE A
- 602306-03 INLET, TYPE B
- 602601-04 PRECAST REINFORCED CONCRETE FLAT TOP SLAB
- 602701-02 MANHOLE STEPS
- 604006-05 FRAME AND GRATE TYPE 3
- 604036-03 GRATE, TYPE B
- 606001-06 CONCRETE CURB TYPE B AND COMBINATION
- 701801-06 CONCRETE CURB AND GUTTER
- 701901-06 SIDEWALK, CORNER OR CROSSWALK CLOSURE
- 720001-01 TRAFFIC CONTROL DEVICES
- 720006-04 SIGN PANEL MOUNTING DETAILS
- B.L.R. 21-9 SIGN PANELS ERECTION DETAILS
- TYPICAL APPLICATION OF TRAFFIC CONTROL DEVICES FOR CONSTRUCTION ON RURAL LOCAL HIGHWAYS

PLANS FOR PROPOSED IMPROVEMENT FOR SURFACE TRANSPORTATION - URBAN

SARGENT STREET
SECTION 15-00036-00-PV
PROJECT NO: M-5039(013)
ROADWAY RECONSTRUCTION
MONTGOMERY COUNTY
C-96-201-16
FAU 8249

HIGHWAY CLASSIFICATION

SARGENT STREET
ADT = 1000 (2010), 1170 (2026)
DHV = 120 (2026)
2% TRUCKS
FUNCTIONAL CLASS: URBAN COLLECTOR
DESIGN SPEED = 35 MPH
POSTED SPEED = 30 MPH



FULL SIZE PLANS HAVE BEEN PREPARED USING STANDARD ENGINEERING SCALES. REDUCED SIZED PLANS WILL NOT CONFORM TO STANDARD SCALES. IN MAKING MEASUREMENTS ON REDUCED PLANS, THE ABOVE SCALES MAY BE USED.

UTILITIES

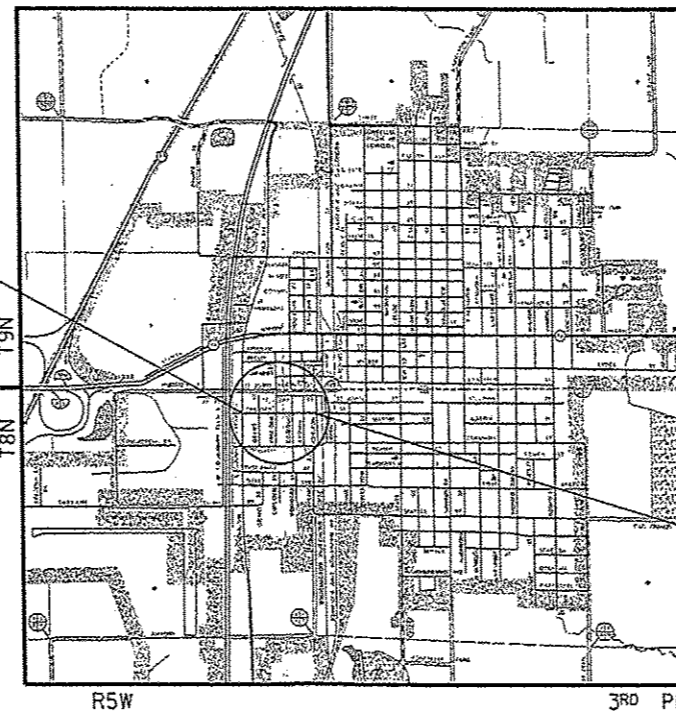
ILLINOIS CONSOLIDATED TELEPHONE COMMUNICATIONS - TELEPHONE/CABLE
1000 SOUTH SPRESSER ST.
TAYLORVILLE, IL 62568
ATTENTION: DOUG HOUTCHINS 217-824-9909

AMEREN IP - O/H ELECTRIC & GAS
1915 OLD BUSLINE ROAD
P.O. BOX 579
HILLSBORO, IL 62049
ATTENTION: DEBORAH LEWEY 217-532-8278

CITY OF LITCHFIELD - WATER, SANITARY
120 EAST RYDER
LITCHFIELD, IL 62056
ATTENTION: ART LEVOY 217-324-9212

J.U.L.I.E.
JOINT UTILITY LOCATION INFORMATION FOR EXCAVATION
1-800-892-0123 OR "811"

CONTRACT NO. 93683



LOCATION MAP

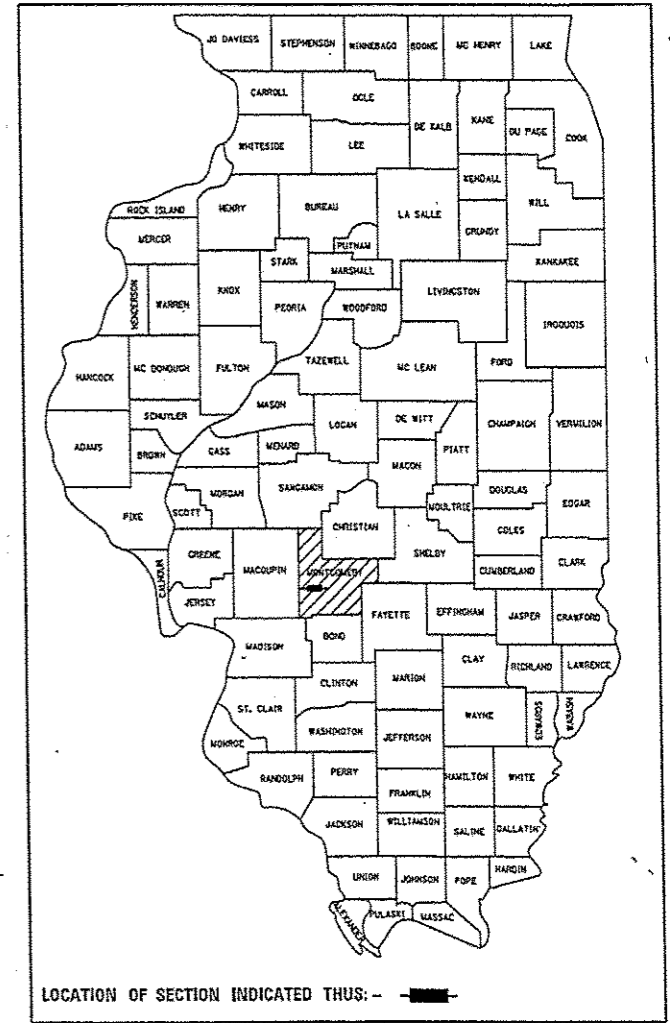


GROSS LENGTH OF PROJECT = 1522.62 FT (0.288 MILES)
NET LENGTH OF PROJECT = 1522.62 FT (0.288 MILES)

END ROADWAY IMPROVEMENTS STA. 116+91.00



SIGNATURE: *Kristin Timmons*
DATE SIGNED: 1/11/17
LICENSE EXPIRATION DATE: 11/30/17



LOCATION OF SECTION INDICATED THUS: -

APPROVED *Jan. 3 2017*
Steve Douglas
MAYOR, CITY OF LITCHFIELD

PASSED *FEB 10 2017*
Doug DeShazo
DISTRICT SIX ENGINEER OF LOCAL ROADS & STREETS

PASSED *Feb 19 2017*
Ron Buchanan
DISTRICT CONSTRUCTION ENGINEER

Releasing For Bid Based on Limited Review *FEB 10 2017*
Jeffrey M. Southwick
REGION FOUR ENGINEER

STATE OF ILLINOIS
DEPARTMENT OF TRANSPORTATION

PRINTED BY THE AUTHORITY OF THE STATE OF ILLINOIS

GENERAL NOTES

- ALL WORK SHALL BE DONE IN ACCORDANCE WITH THE "STANDARD SPECIFICATIONS FOR ROAD AND BRIDGE CONSTRUCTION," ADOPTED BY THE ILLINOIS DEPARTMENT OF TRANSPORTATION ON APRIL 1, 2016; AND THE LATEST EDITION OF THE "SUPPLEMENTAL SPECIFICATIONS AND RECURRING SPECIAL PROVISIONS."
- THE CONTRACTOR SHALL BE RESPONSIBLE FOR PROTECTING UTILITY PROPERTY FROM CONSTRUCTION OPERATIONS AS OUTLINED IN ARTICLE 107.31 OF THE STANDARD SPECIFICATION. THE J.U.L.I.E. NUMBER IS 1-800-892-0123 (811 DIRECT NUMBER).
- THE LOCATION OF BURIED AND ABOVE GROUND UTILITIES SHOWN IS FOR THE CONTRACTOR'S INFORMATION ONLY AND IS NOT TO BE REFERENCED FOR CONSTRUCTION PURPOSES. THE IMPLIED PRESENCE OR ABSENCE OF UTILITIES IS NOT TO BE CONSTRUED BY THE OWNER, ENGINEER, CONTRACTOR OR SUBCONTRACTOR TO BE AN ACCURATE AND COMPLETE REPRESENTATION OF UTILITIES THAT MAY OR MAY NOT EXIST ON THE CONSTRUCTION SITE. IT SHALL BE THE CONTRACTOR'S RESPONSIBILITY TO COORDINATE HIS CONSTRUCTION ACTIVITIES WITH THE VARIOUS UTILITY OWNERS. ALL POTENTIAL CONFLICTS SHALL BE INVESTIGATED AND REMEDIAL ACTION TAKEN PRIOR TO INTERRUPTION OF THE CONTRACTOR'S PROGRESS.
- ALL UTILITY FACILITIES THAT REQUIRE RELOCATION WITHIN ROADWAY R.O.W. SHALL BE COMPLETED BY THE UTILITY COMPANY UNLESS OTHERWISE SHOWN ON THE PLANS.
- ALL STATION AND OFFSET REFERENCES ARE TO THE ROADWAY CENTERLINE UNLESS OTHERWISE NOTED.
- WHERE PROPOSED CONSTRUCTION ABUTS EXISTING APPURTENCES, A SAW CUT SHALL BE MADE TO ACHIEVE A NEAT BUTT JOINT. SAW CUT SHALL BE CONSIDERED INCLUDED IN ITEM BEING CONSTRUCTED AND/OR REMOVED.
- FACTORS USED FOR ESTIMATING PLAN QUANTITIES ARE AS FOLLOWS:

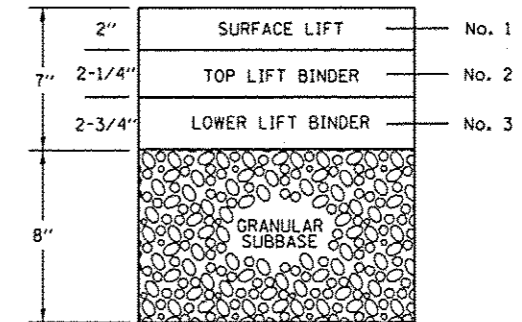
AGGREGATE:	
- PUGGED AGGREGATE	2.05 TONS/CU.YD.
- ALL OTHER AGGREGATE	1.89 TONS/CU. YD.
HOT-MIX ASPHALT:	
BITUMINOUS MATERIALS:	0.056 TONS/SQ. YD./1"
- ON PAVEMENT	0.05 LB/SQ. FT.
- INTERMEDIATE LIFTS (FOG COAT)	0.025 LB/SQ. FT.
- ON AGGREGATE SURFACE	0.25 LB/SQ. FT.
AGGREGATE (PRIME COAT)	4 LBS./SQ.YD.
SEEDING FERTILIZER RATIO (NIT:PHOS:POT)	90:90:90 LBS./AC.
AGRICULTURAL GROUND LIMESTONE	2.00 TONS/AC.
MULCH	2.00 TONS/AC.
- SEEDING SHALL BE DONE ON ALL AREAS THAT ARE DISTURBED BY CONSTRUCTION OPERATIONS AS DIRECTED BY THE ENGINEER. SEEDING SHALL BE PAID FOR ONLY WITHIN THE EXISTING RIGHT-OF-WAY LIMITS. ALL AREAS DISTURBED BY THE CONTRACTOR OUTSIDE THE PROPOSED CONSTRUCTION LIMITS SHALL BE SEEDD AND RESTORED TO LIKE ORIGINAL CONDITION, AS DIRECTED BY THE ENGINEER, AT THE CONTRACTOR'S EXPENSE.
- THE CONTRACTOR SHALL BE REQUIRED TO COMPLY WITH THE PROVISIONS OF THE NATIONAL POLLUTANT DISCHARGE ELIMINATION SYSTEM (NPDES) STORM WATER PERMIT AND IMPLEMENT THE EROSION CONTROL MEASURES IN ACCORDANCE WITH THE PLANS AND SPECIFICATIONS. AS SPECIFIED IN ARTICLE 107.23, THE ENGINEER MUST GIVE PRIOR APPROVAL BEFORE DISTURBANCE OF ANY AREA CAN BEGIN.
- BEFORE ORDERING STORM SEWER OR SANITARY MANHOLES, THE CONTRACTOR SHALL FIELD VERIFY THE LOCATION AND DEPTH OF EXISTING SEWERS FOR CONNECTION. EXACT DEPTH AND LOCATION OF SEWER IS UNKNOWN.
- FOR SEWER CONSTRUCTION, THE "STANDARD SPECIFICATIONS FOR WATER AND SEWER MAIN CONSTRUCTION IN ILLINOIS, SIXTH EDITION" ADOPTED JULY 2009, SHALL GOVERN, UNLESS MODIFIED BY THE PROJECT SPECIFICATIONS.
- ALL COORDINATES SHOWN ON THE PLANS ARE BASED ON GPS VRS IL WEST NAD 83 AND ALL ELEVATIONS SHOWN ON THE PLANS ARE BASED ON NAVD 82 DATUM.
- PROPOSED SIDEWALKS ACROSS DRIVES SHALL MATCH THE DEPTH OF THE ADJACENT DRIVE. COST FOR ADDITIONAL MATERIAL SHALL BE INCLUDED IN UNIT PRICE FOR PCC SIDEWALK, 4".
- DEPRESS CURBS ACROSS ALL ENTRANCES, PER IDOT STD. 606001-06.
- INSTALL SIDEWALK RAMPS AND DETECTABLE WARNINGS IN ACCORDANCE WITH IDOT STD. 424001-09 AT ALL LOCATIONS WHERE PROPOSED SIDEWALK ABUTS CURB AT ROADWAY INTERSECTIONS AS SHOWN ON THE PLANS.
- OFFSETS TO DRAINAGE STRUCTURES PLACE IN THE CURB AND GUTTER ARE TO THE EDGE OF PAVEMENT. OFFSETS TO DRAINAGE STRUCTURES OUTSIDE OF CURB AND GUTTER ARE TO THE CENTER OF STRUCTURE.
- EXISTING STREET LIGHTS WITHIN PROJECT LIMITS TO REMAIN IN PLACE.
- ITEMS TO BE REMOVED OR RELOCATED, INCLUDING, BUT NOT LIMITED TO VEGETATION, TREES, STRUCTURES, PAVEMENT, CURBS, GUTTERS, DRAINAGE STRUCTURES, UTILITIES, AND SIGNAGE ARE DESIGNATED ON THE PLANS DRAWINGS.
- GRADING SHALL BE DONE BY HAND AROUND LIGHT POLES, UTILITY POLES, SIGN POSTS, SHRUBS, TREES OR OTHER NATURAL OR MAN-MADE OBJECTS WHERE SHALLOW FILLS OR CUTS ARE ADJACENT TO THE ITEMS. THE DECISION AS TO ITEMS TO REMAIN IN PLACE SHALL BE AS DIRECTED BY THE ENGINEER.

COMMITMENTS

- NONE IDENTIFIED TO DATE.

MIXTURE REQUIREMENTS

MIXTURE NUMBER:	No. 1	No. 2	No. 3	No. 4
LOCATION(S):	SARGENT STREET			
MIXTURE USE(S):	HOT MIX ASPHALT SURFACE LIFT	TOP BINDER LIFT	LOWER BINDER LIFT	HMA DRIVEWAY PAVEMENT
AC/PG:	SBS PG 64-28	SBS PG 64-28	PG 64-22	PG 64-22
DESIGN AIR VOIDS:	4.0% @ Ndesign = 50	4.0% @ Ndesign = 50	4.0% @ Ndesign = 50	4.0% @ Ndesign = 50
MIXTURE COMPOSITION: (GRADATION MIXTURE)	IL-9.5	IL-19.0	IL-19.0	IL-9.5
FRICTION AGGREGATE:	MIX "C"	N/A	N/A	MIX "C"



SARGENT STREET ASPHALT LIFT DIAGRAM

STRUCTURAL DESIGN INFORMATION (SARGENT STREET)	
CLASS III STREET	
DESIGN TRAFFIC (2026):	1173 TOTAL ADT
P.V. = 1032	S.U. = 82 M.U. = 59
T.F. = 0.318	(80,000 LB. LOAD LIMIT)
DESIGN STRAIN = 205 (MICROSTRAIN)	
CONSTRUCT: HOT-MIX ASPHALT PAVEMENT, 7" WITH SUBBASE GRANULAR MATERIAL, TYPE B, 8"	

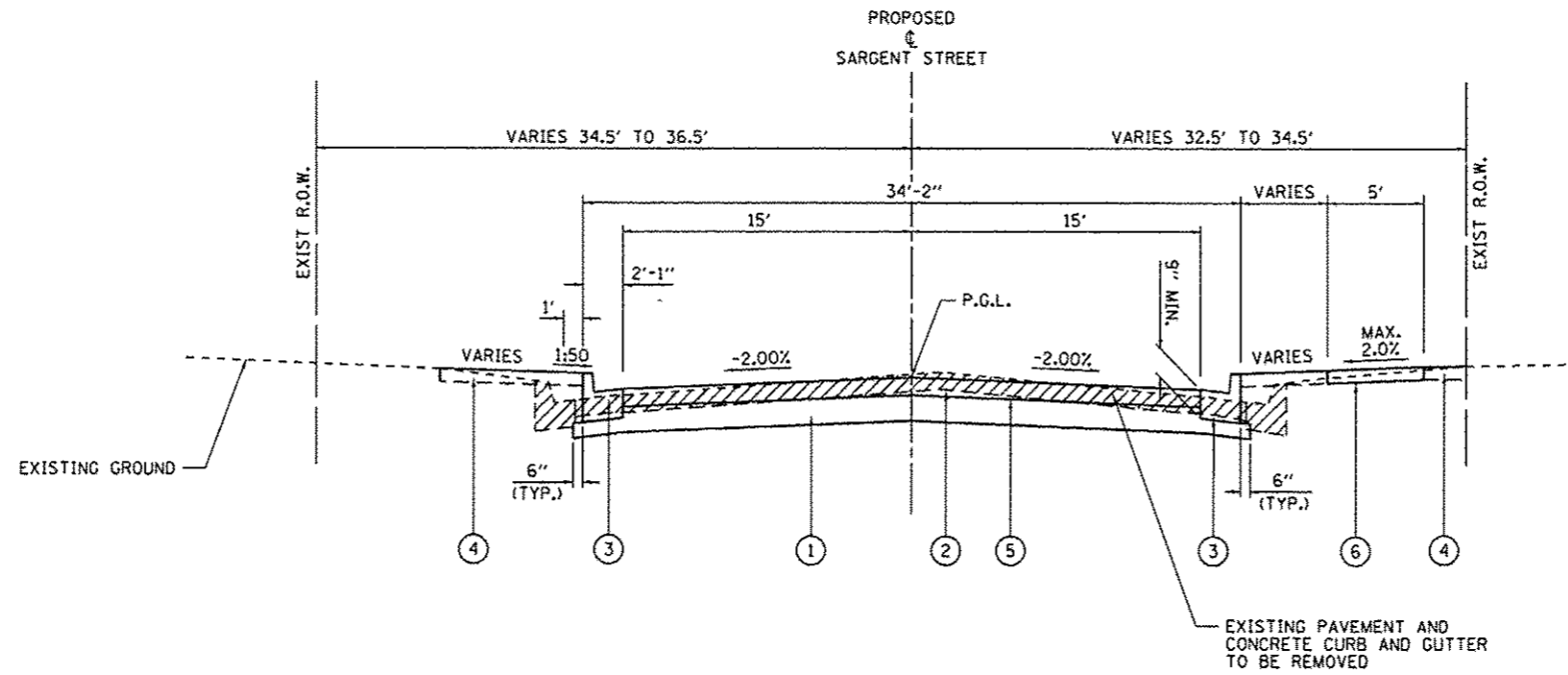
SUMMARY OF QUANTITIES			
CODE NO.	ITEM DESCRIPTION	UNIT	TOTAL QUANTITY
20200100	EARTH EXCAVATION	CU YD	3,208
20201200	REMOVAL AND DISPOSAL OF UNSUITABLE MATERIAL	CU YD	250
20800150	TRENCH BACKFILL	CU YD	89.3
21101615	TOPSOIL FURNISH AND PLACE, 4"	SQ YD	4,198
25000200	SEEDING, CLASS 2	ACRE	1.00
25000400	NITROGEN FERTILIZER NUTRIENT	POUND	90
25000500	PHOSPHORUS FERTILIZER NUTRIENT	POUND	90
25000600	POTASSIUM FERTILIZER NUTRIENT	POUND	90
25000700	AGRICULTURAL GROUND LIMESTONE	TON	2
25100115	MULCH, METHOD 2	ACRE	1.00
28000500	INLET AND PIPE PROTECTION	EACH	2
31101600	SUBBASE GRANULAR MATERIAL, TYPE B 8"	SQ YD	6,916
35100300	AGGREGATE BASE COURSE, TYPE A 4"	SQ YD	242
40201000	AGGREGATE FOR TEMPORARY ACCESS	TON	51
40600275	BITUMINOUS MATERIALS (PRIME COAT)	POUND	13,513
40600290	BITUMINOUS MATERIALS (TACK COAT)	POUND	2,703
40701821	HOT-MIX ASPHALT PAVEMENT (FULL-DEPTH), 7"	SQ YD	6,006
42300200	PORTLAND CEMENT CONCRETE DRIVEWAY PAVEMENT, 6 INCH	SQ YD	116
42400100	PORTLAND CEMENT CONCRETE SIDEWALK 4 INCH	SQ FT	5,511
42400800	DETECTABLE WARNINGS	SQ FT	220
44000100	PAVEMENT REMOVAL	SQ YD	7,089

SUMMARY OF QUANTITIES			
CODE NO.	ITEM DESCRIPTION	UNIT	TOTAL QUANTITY
44000500	COMBINATION CURB AND GUTTER REMOVAL	FOOT	2,824
44000600	SIDEWALK REMOVAL	SQ FT	677
54213657	PRECAST REINFORCED CONCRETE FLARED END SECTIONS 12"	EACH	2
550A0050	STORM SEWERS, CLASS A, TYPE 1 12"	FOOT	102
59300100	CONTROLLED LOW-STRENGTH MATERIAL	CU YD	20
60200305	CATCH BASINS, TYPE A, 4'-DIAMETER, TYPE 3 FRAME AND GRATE	EACH	6
60235700	INLETS, TYPE A, TYPE 3 FRAME AND GRATE	EACH	4
60240220	INLETS, TYPE B, TYPE 3 FRAME AND GRATE	EACH	1
60500060	REMOVING INLETS	EACH	3
60500305	FILLING INLETS	EACH	7
60604400	COMBINATION CONCRETE CURB AND GUTTER, TYPE B-6.18	FOOT	3,188
67100100	MOBILIZATION	LSUM	1
72400500	RELOCATE SIGN PANEL ASSEMBLY - TYPE A	EACH	8
X0326713	SANITARY SEWER CONNECTION	EACH	2
X5510100	STORM SEWER REMOVAL	FOOT	236
X6026055	SANITARY MANHOLE, SPECIAL	EACH	2
X7010216	TRAFFIC CONTROL AND PROTECTION, (SPECIAL)	LSUM	1
Z0004510	HOT-MIX ASPHALT DRIVEWAY PAVEMENT, 3"	SQ YD	236
Z0013798	CONSTRUCTION LAYOUT	LSUM	1
Z0056608	STORM SEWER (WATER MAIN REQUIREMENTS) 12 INCH	FOOT	283
# 20076600	Trainees	Hour	500
# 20076604	Trainees Training Program Graduate	Hour	500

CITY OF LITCHFIELD # 0042
LITCHFIELD, ILLINOIS

SUMMARY OF QUANTITIES

FILE NAME : L:\Litchfield\1502805\Draw\CADD_Sheets\03_0693863-shr-SUMMARY_QUANTITIES.dgn	USER NAME : Kristin Timmons	DESIGNED - BB	REVISED -	F.A. RTE.	SECTION	COUNTY	TOTAL SHEETS	SHEET NO.
		DRAWN - RAH	REVISED -		15-00036-00-PV	MONTGOMERY	23	3
		CHECKED - KLT	REVISED -					CONTRACT NO. 93683
		DATE - 1/12/17	REVISED -	SCALE: N.T.S.	SHEET OF SHEETS	STA. TO STA.		ILLINOIS FED. AID PROJECT



PROPOSED TYPICAL SECTION

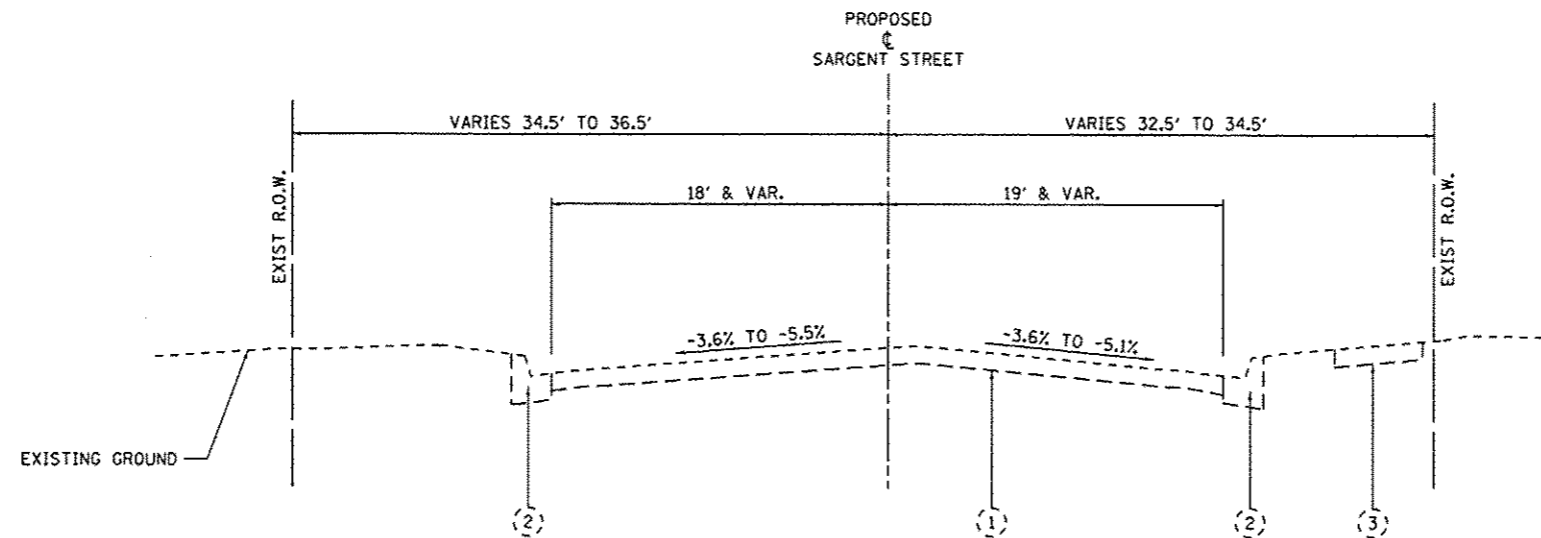
SARGENT STREET

STA. 101+68.38 TO STA. 116+91.00
(LOOKING EAST)

PROPOSED LEGEND

- ① SUBBASE GRANULAR MATERIAL, TYPE B, 8"
- ② HOT-MIX ASPHALT PAVEMENT, FULL DEPTH, 7"
- ③ COMBINATION CONCRETE CURB AND GUTTER, TYPE B-6.18
- ④ TOPSOIL FURNISH & PLACE, 4" & SEEDING CLASS 2 WITH MULCH METHOD 2
- ⑤ BITUMINOUS (PRIME COAT)
- ⑥ PORTLAND CEMENT CONCRETE SIDEWALK, 4"

* SEE PLAN AND PROFILE SHEETS FOR AREAS OF EXISTING CONCRETE SIDEWALK TO REMAIN



EXISTING TYPICAL SECTION

SARGENT STREET

STA. 101+68.38 TO STA. 116+91.00
(LOOKING EAST)

EXISTING LEGEND

- ① EXISTING BITUMINOUS PAVEMENT
- ② EXISTING TYPE B CONCRETE CURB AND GUTTER
- ③ EXISTING BRICK/CONCRETE SIDEWALK

FILE NAME : L:\Litchfield\1502005\Draw\CADD_Sheets\04_06\93683-Typical Sections.dgn	USER NAME : Kristin Timmons	DESIGNED - BB	REVISED -	CITY OF LITCHFIELD LITCHFIELD, ILLINOIS	TYPICAL SECTIONS - SARGENT STREET			F.A. RTE.	SECTION	COUNTY	TOTAL SHEETS	SHEET NO.
PLOT SCALE : 1/8" = 1'-0"	CHECKED - KLT	REVISED -	15-00036-00-PV					MONTGOMERY	23	4		
Default	PLOT DATE : 1/11/2017	DATE - 1/12/17	REVISED -		SCALE: N/A	SHEET	OF	SHEETS	STA.	TO STA.	CONTRACT NO. 93683	
ILLINOIS FED. AID PROJECT												

EARTHWORK

LOCATION			EARTH EXCAVATION (CU YD)	FOR INFORMATION ONLY		
				EARTH EXCAVATION ADJUSTED FOR 25% SHRINKAGE (CU YD)	EMBANKMENT (CU YD)	EARTHWORK BALANCE WASTE (+) SHORTAGE (-) (CU YD)
STATION	TO	STATION				
SARGENT STREET						
101+68.38	-	116+91.00	3,208	2,406	136	2,270
TOTALS			3,208	2,406	136	2,270

- * ASSUMED SHRINKAGE FACTOR IS 25%
- ** EARTH EXCAVATION TO BE USED AS EMBANKMENT = EARTH EXCAVATION X 75%
- *** EARTHWORK BALANCE = EMBANKMENT - (EARTH EXCAVATION X 0.75)

SIGNS

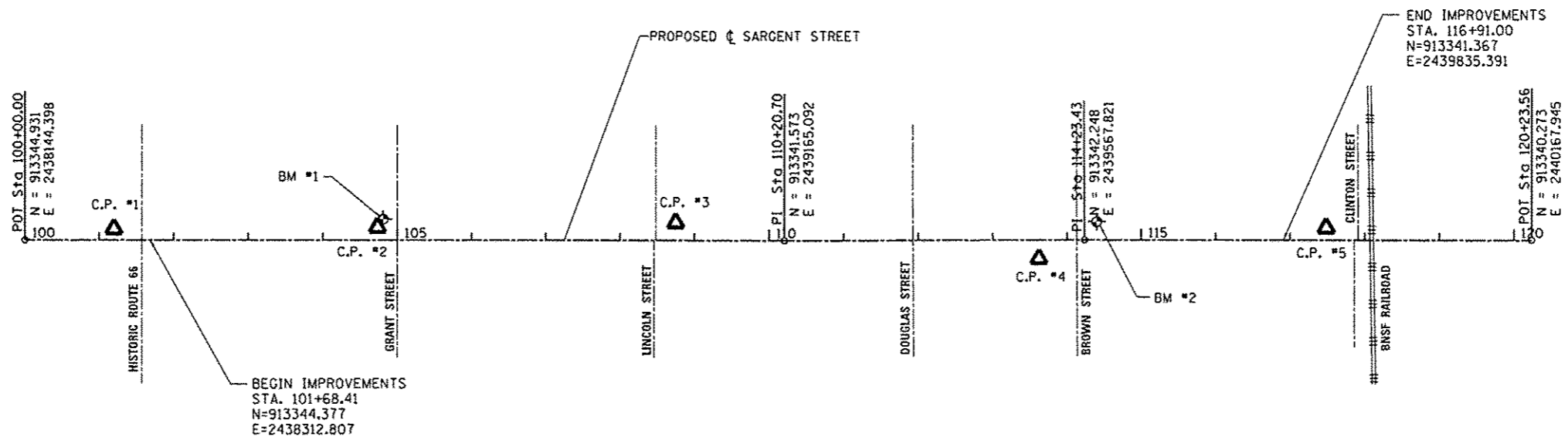
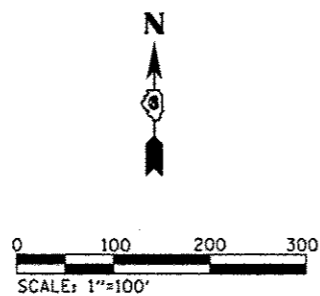
LOCATION		RELOCATE SIGN PANEL ASSEMBLY - TYPE A
STATION	OFFSET	(EACH)
SARGENT STREET		
102+01	21.38' LT.	1
102+93	23.85' RT.	1
104+78	25.14' RT.	1
104+83	29.24' LT.	1
108+33	27.07' LT.	1
108+69	25.16' RT.	1
111+47	21.12' LT.	1
111+73	25.25' RT.	1
TOTALS		8

PAVING

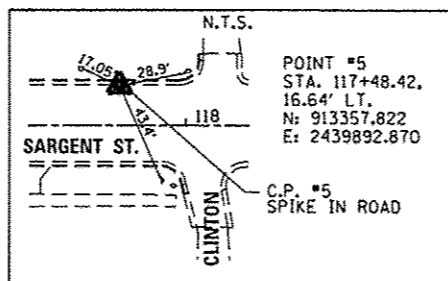
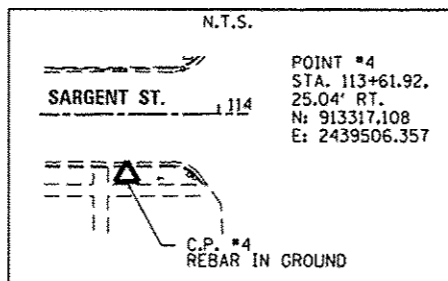
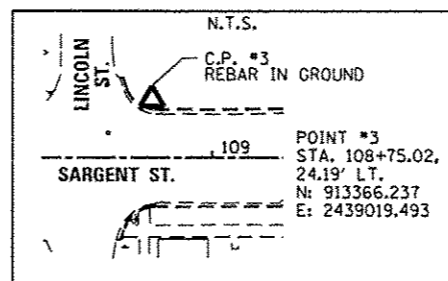
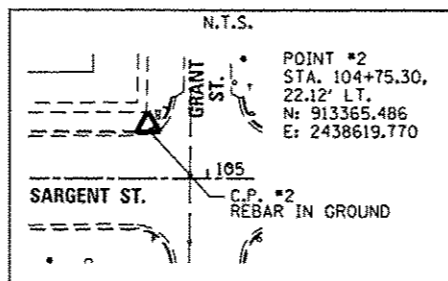
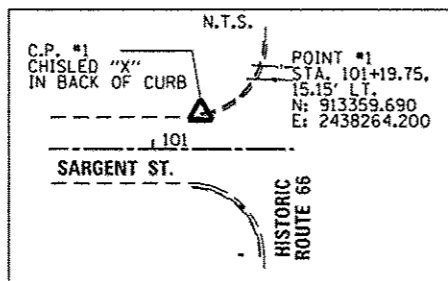
STATION / LOCATION			SUBBASE GRANULAR MATERIAL, TYPE B 8"	BITUMINOUS MATERIALS (PRIME COAT)	BITUMINOUS MATERIALS (TACK COAT)	HOT-MIX ASPHALT PAVEMENT (FULL-DEPTH), 7"	PAVEMENT REMOVAL
STATION	TO	STATION	(SQ YD)	(POUND)	(POUND)	(SQ YD)	(SQ YD)
SARGENT STREET							
101+68.37	-	116+91.00	6,916	13,513	2,703	6,006	7,089
TOTALS			6,916	13,513	2,703	6,006	7,089

SEEDING

LOCATION			SEEDING, CLASS 2	NITROGEN FERTILIZER NUTRIENT	PHOSPHOROUS FERTILIZER NUTRIENT	POTASSIUM FERTILIZER NUTRIENT	AGRICULTURAL GROUND LIMESTONE	MULCH, METHOD 2
STATION	TO	STATION	(ACRE)	(POUND)	(POUND)	(POUND)	(TON)	(ACRE)
SARGENT STREET								
101+68.38	-	105+00.00	0.20	18	18	18	0.4	0.20
105+00.00	-	108+45.71	0.20	18	18	18	0.4	0.20
108+45.71	-	111+93.23	0.20	18	18	18	0.4	0.20
111+93.23	-	114+13.19	0.20	18	18	18	0.4	0.20
114+13.19	-	116+91.00	0.20	18	18	18	0.4	0.20
TOTALS			1.00	90	90	90	2.0	1.00



HORIZONTAL CONTROL:



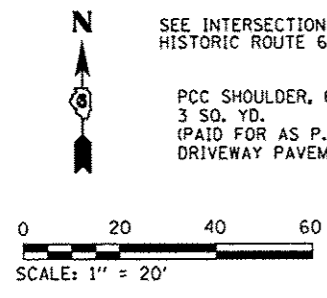
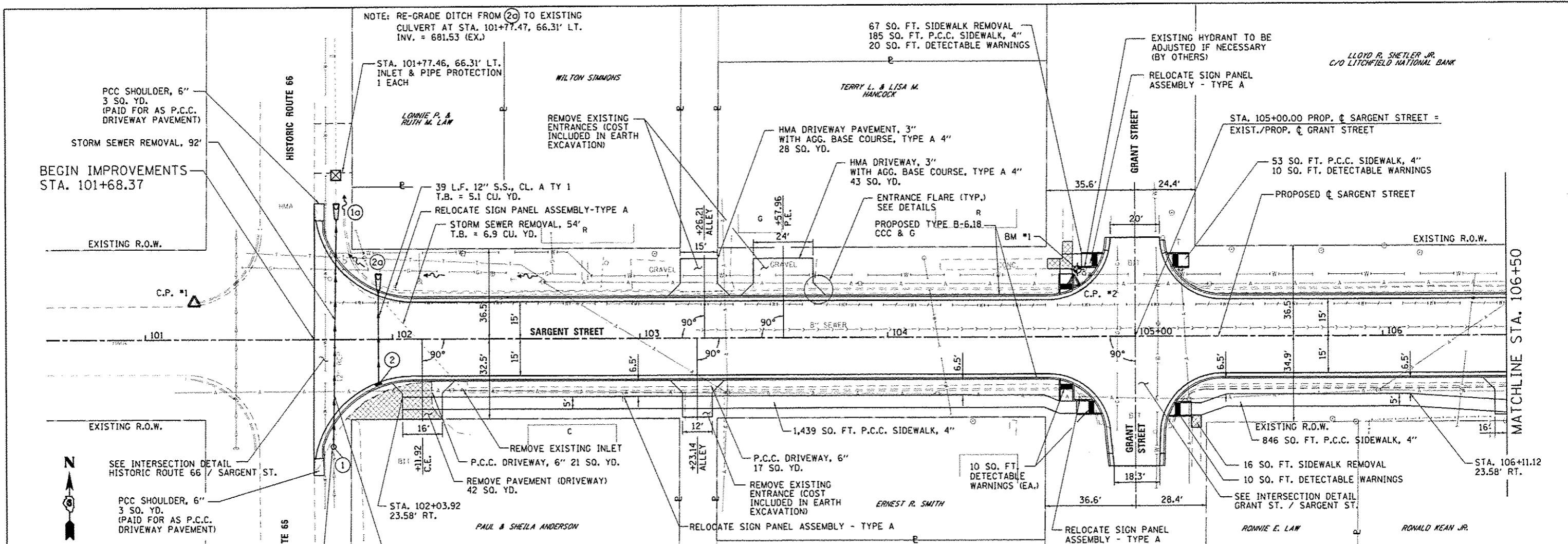
BENCHMARKS:

- B.M. #1 BOLT IN THE WORD MUELLER ON FIRE HYDRANT AT NORTHWEST CORNER OF GRANT ST. AND SARGENT ST. STA. 104+79.55, 27.31' LT. ELEV. = 687.57
- B.M. #2 BOLT IN THE WORD MUELLER ON FIRE HYDRANT AT NORTHEAST CORNER OF BROWN ST. AND SARGENT ST. STA. 114+39.97, 24.28' LT. ELEV. = 687.98

FILE NAME =	USER NAME = Kristin Trimmans	DESIGNED - BMB	REVISED -	CITY OF LITCHFIELD LITCHFIELD, IL	ALIGNMENT, HORIZONTAL CONTROL AND BENCHMARKS SARGENT STREET				F.A. RTE.	SECTION	COUNTY	TOTAL SHEETS	SHEET NO.	
L:\Litchfield\1502895\Draw\CADD_Sheets\06_0693663-shr-SargentSt-Alignment.dgn		DRAWN - RAH	REVISED -		SCALE: 1"=100'	SHEET	OF	SHEETS	STA. 100+00.00	TO STA. 120+23.56	15-00036-00-PV	MONTGOMERY	23	6
Default		CHECKED - KLT	REVISED -											
		DATE - 1/12/17	REVISED -											

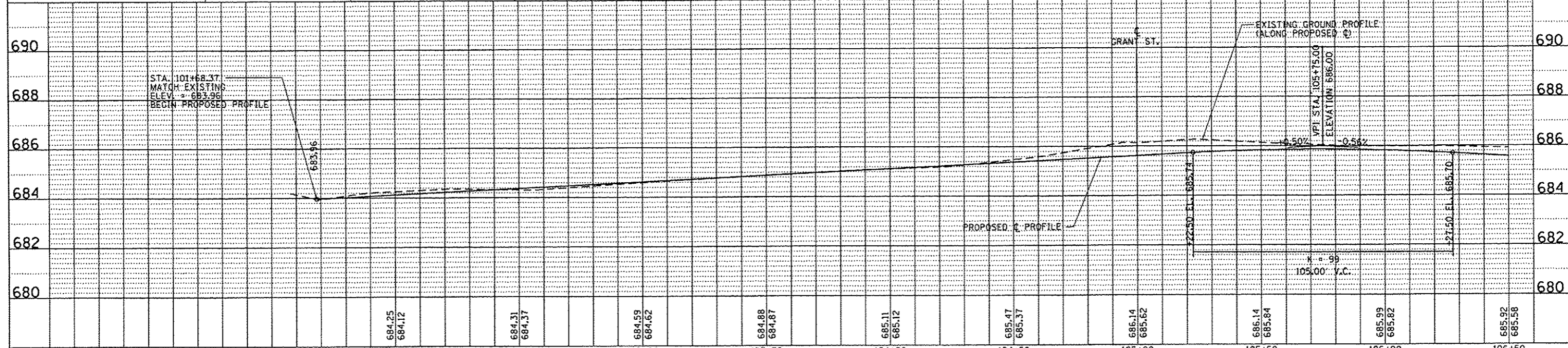
DATE	
BY	
PLANNING	
DESIGN	
CONSTRUCTION	
REVISION	
NO.	
DATE	
BY	
DESCRIPTION	

DATE	
BY	
PROFILE	
DESIGN	
CONSTRUCTION	
REVISION	
NO.	
DATE	
BY	
DESCRIPTION	



DRAINAGE ITEMS

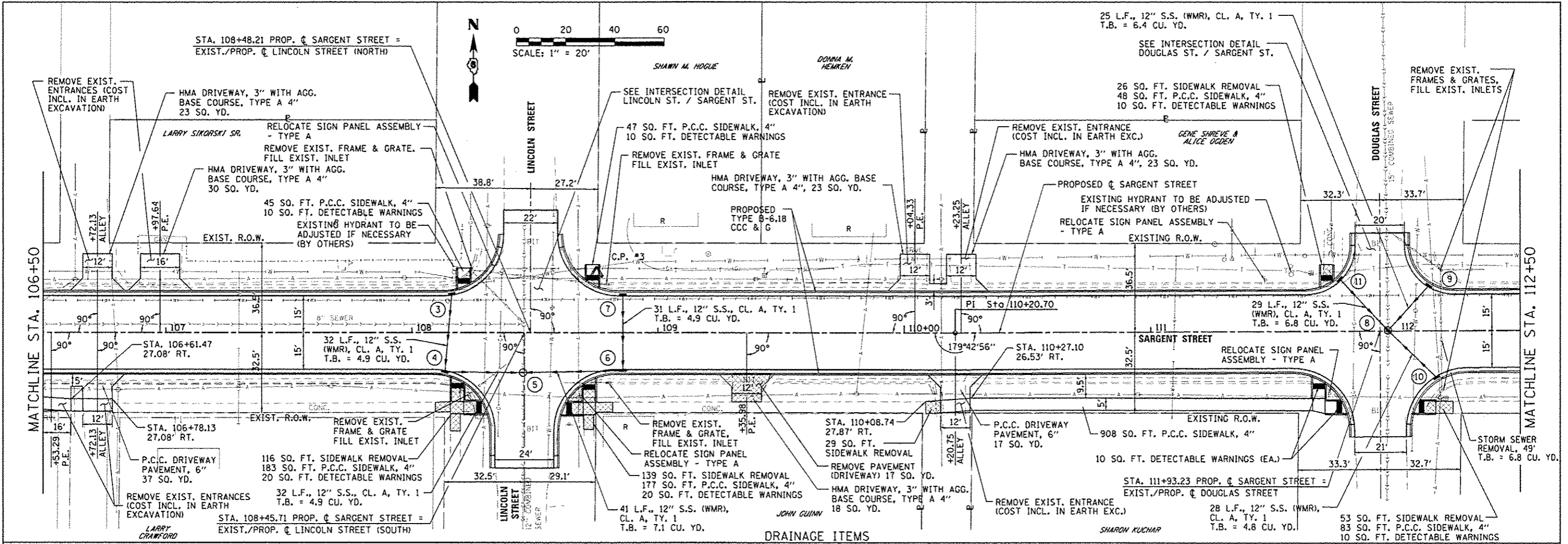
① STA. 101+76.03, 43.51' RT. INLET TYPE B, WITH TY 8 F. & G. RIM = 684.69 INV. = 682.11± (S-MATCH EXIST.) INV. = 682.10 (N) INLET & PIPE PROTECTION, 1 EACH	⑩ STA. 101+77.47, 54.96' LT. PRECAST REIN. CONC. FES, 12" INV. = 681.56	② STA. 101+94.30, 17.57' RT. INLET TYPE A WITH TY 3 F. & G. RIM = 683.94 INV. = 681.85	⑪ STA. 101+94.30, 26.48' LT. PRECAST REIN. CONC. FES, 12" INV. = 681.65
--	---	---	---



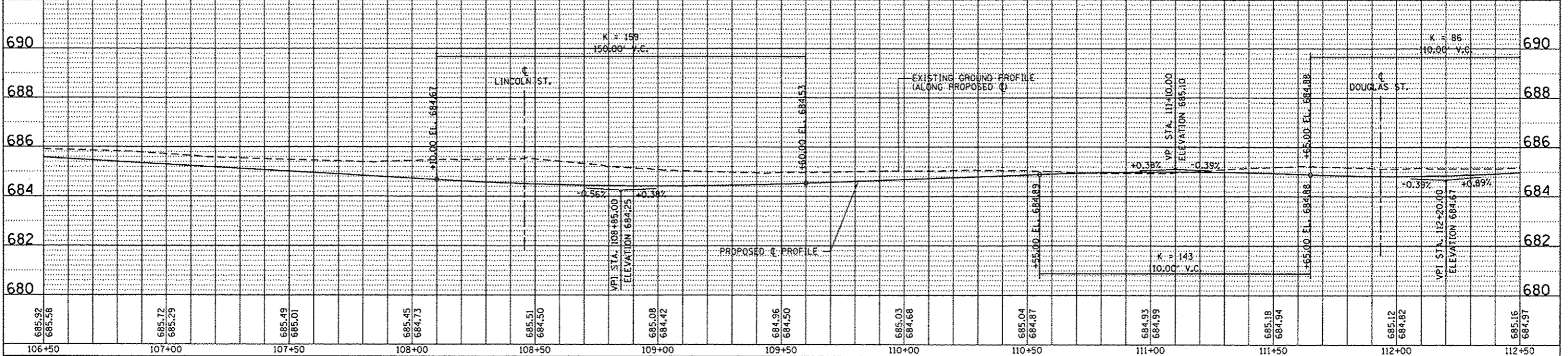
FILE NAME : L:\Litchfield\1502005\Draw\CA00_Sheets\00	USER NAME : Kristin Timmons	DESIGNED - BB	REVISED -	<p align="center">CITY OF LITCHFIELD LITCHFIELD, ILLINOIS</p> <p align="center">PLAN AND PROFILE SARGENT STREET</p> <p align="center">SCALE: 1"=20' SHEET NO. 1 OF 3 SHEETS STA. 101+68.37 TO STA. 106+50</p>	F.A. RTE.	SECTION	COUNTY	TOTAL SHEETS	SHEET NO.
		DRAWN - RAH	REVISED -		15-00036-00-PV	MONTGOMERY	23	7	
		CHECKED - KLT	REVISED -		CONTRACT NO. 93683				
		DATE - 1/12/17	REVISED -		FED. ROAD DIST. NO. ILLINOIS FED. AID PROJECT				

DATE	
BY	
REVISIONS	
NO.	
DESCRIPTION	
DATE	
BY	
REVISIONS	
NO.	
DESCRIPTION	
DATE	
BY	
REVISIONS	
NO.	
DESCRIPTION	
DATE	
BY	
REVISIONS	
NO.	
DESCRIPTION	

DATE	
BY	
REVISIONS	
NO.	
DESCRIPTION	
DATE	
BY	
REVISIONS	
NO.	
DESCRIPTION	
DATE	
BY	
REVISIONS	
NO.	
DESCRIPTION	

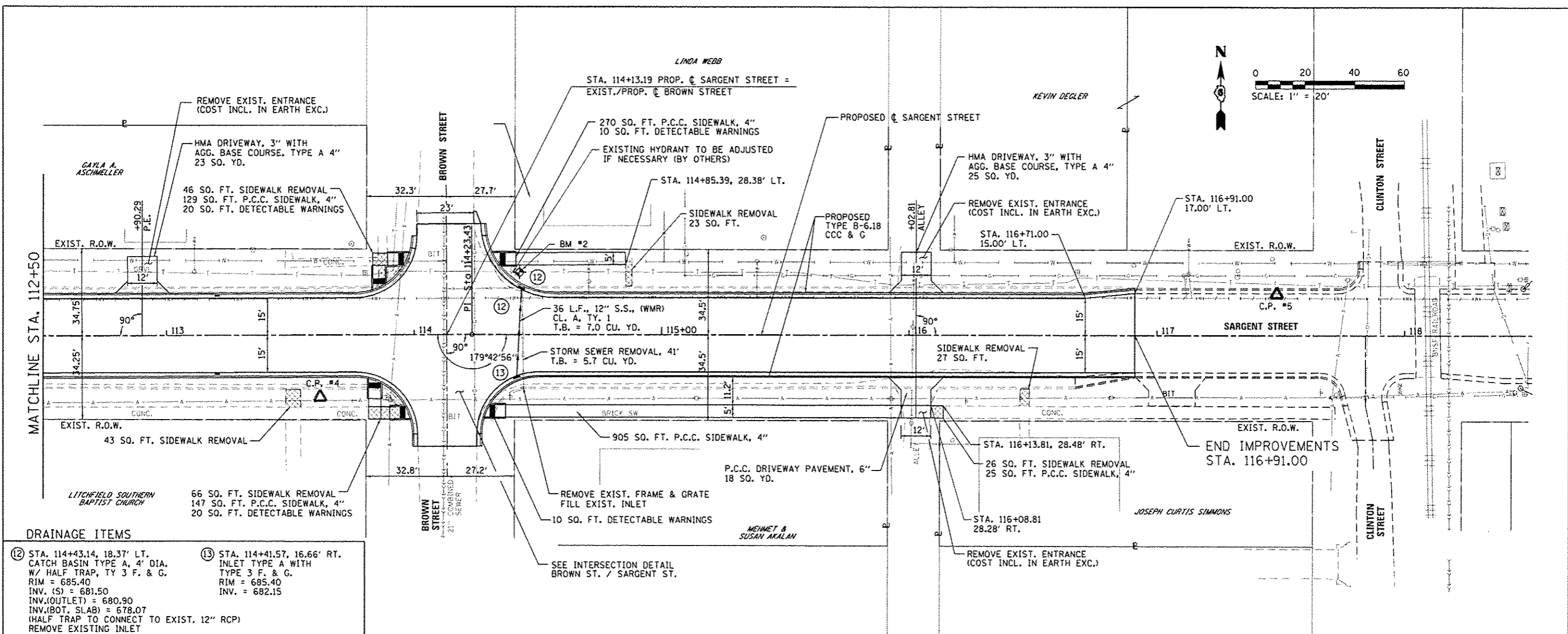


- DRAINAGE ITEMS**
- ③ STA. 108+16.14, 15.30' LT. INLET TYPE A WITH TYPE 3 F. & G. RIM = 684.35 INV. = 681.10
 - ④ STA. 108+13.35, 15.44' RT. CATCH BASIN TY A, 4' DIA. W/HALF TRAP, TYPE 3 F. & G. RIM = 684.36 INV.(N) = 680.94 INV.(OUTLET) = 679.86 INV.(BOT. SLAB) = 677.03
 - ⑤ STA. 108+45.13, 16.29' RT. SANITARY MANHOLE SPECIAL, 4' DIA. RIM = 684.25 INV.(W) = 680.71 INV.(E) = 680.34 INV.(N) = 678.15± (MATCH EXIST.) INV.(S) = 678.15± (MATCH EXIST.) SEWER CONNECTIONS TO STRUCTURE
 - ⑥ STA. 108+85.75, 15.00' RT. CATCH BASIN TYPE A, 4' DIA. WITH HALF TRAP, TYPE 3 F. & G. RIM = 684.12 INV. (N) = 680.71 INV.(OUTLET) = 679.62 INV.(BOT. SLAB) = 676.79
 - ⑦ STA. 108+85.75, 15.00' LT. INLET TYPE A WITH TYPE 3 F. & G. RIM = 684.12 INV. = 680.87
 - ⑧ STA. 111+96.44, 0.22' LT. SANITARY MANHOLE SPECIAL, 5' DIA. RIM = 684.82 INV.(NE) = 680.91, INV.(NW) = 680.94 INV.(SE) = 680.88 INV.(N) = 675.73± (MATCH EXIST.) INV.(S) = 675.53± (MATCH EXIST.) SEWER CONNECTIONS TO STRUCTURE
 - ⑨ STA. 112+12.68, 18.01' LT. CATCH BASIN TY A, 4' DIA. W/ HALF TRAP, TY 3 F. & G. RIM = 684.46 INV.(OUTLET) = 679.96 INV.(BOT. SLAB) = 677.13
 - ⑩ STA. 112+15.71, 18.66' RT. CATCH BASIN TY A, 4' DIA. W/ HALF TRAP, TY 3 F. & G. RIM = 684.46 INV.(OUTLET) = 679.96 INV.(BOT. SLAB) = 677.13
 - ⑪ STA. 111+77.36, 20.85' LT. CATCH BASIN TY A, 4' DIA. W/ HALF TRAP, TY 3 F. & G. RIM = 684.49 INV.(OUTLET) = 679.99 INV.(BOT. SLAB) = 677.16



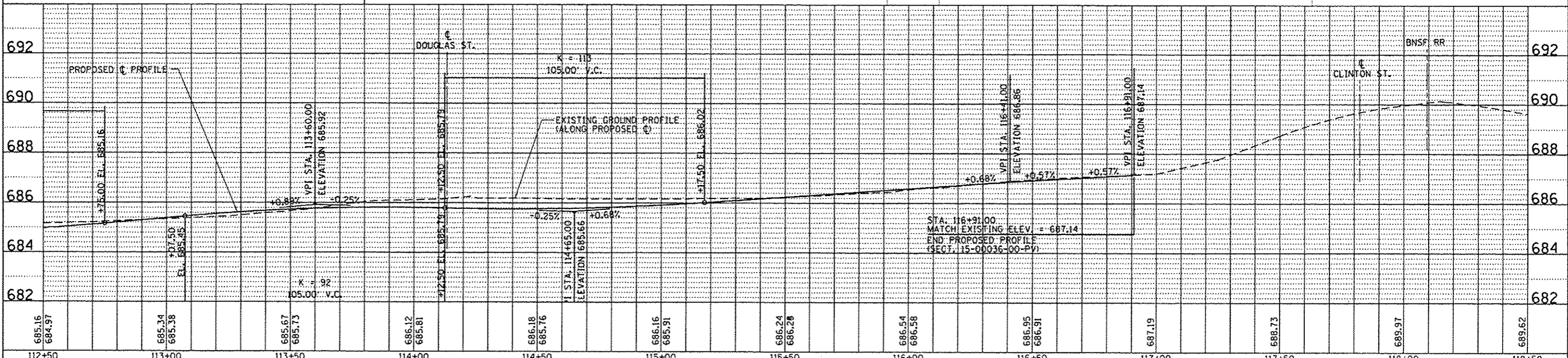
DATE	
BY	
REVISIONS	
NO.	
DESCRIPTION	
DATE	
BY	
NO.	
DESCRIPTION	
DATE	
BY	
NO.	
DESCRIPTION	

DATE	
BY	
REVISIONS	
NO.	
DESCRIPTION	
DATE	
BY	
NO.	
DESCRIPTION	
DATE	
BY	
NO.	
DESCRIPTION	

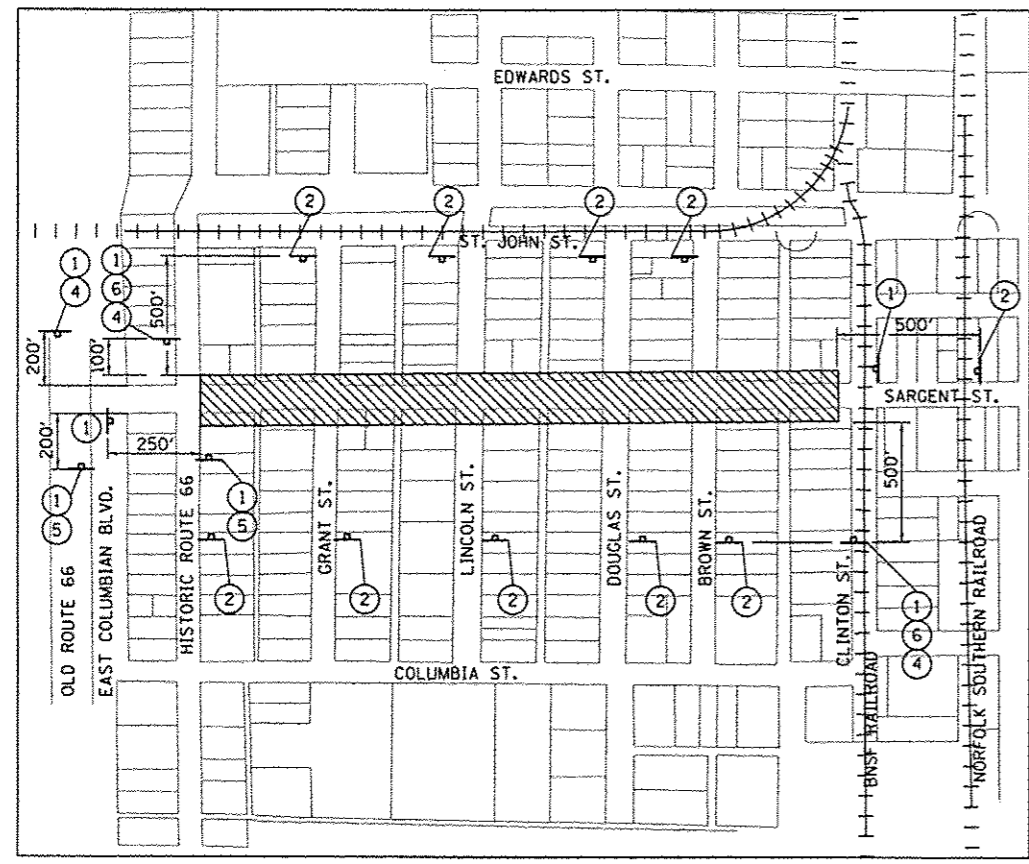
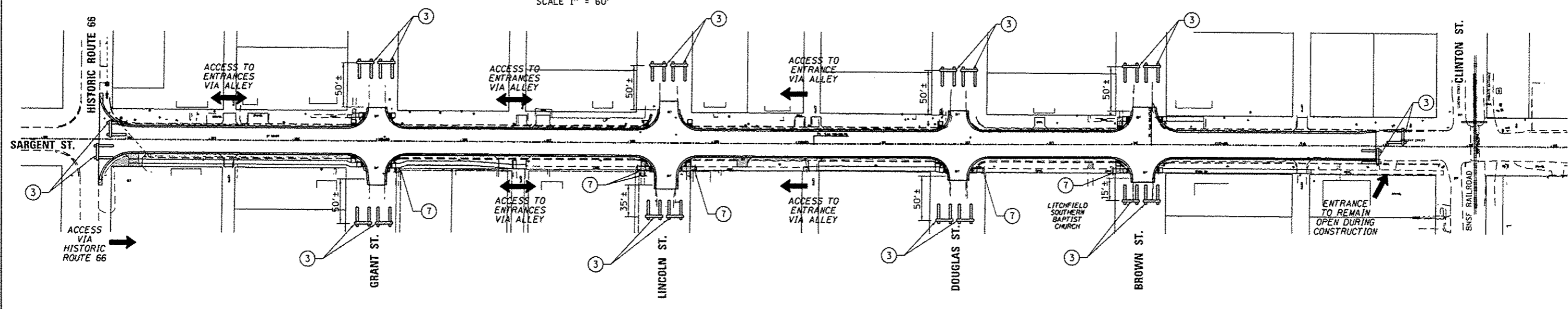
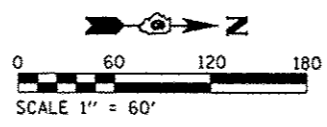


DRAINAGE ITEMS

⑫ STA. 114+43.14, 18.37' LT. CATCH BASIN TYPE A, 4' DIA. W/ HALF TRAP, TY 3 F. & G. RIM = 685.40 INV. (S) = 681.50 INV. (OUTLET) = 680.90 INV. (BOT. SLAB) = 678.07 (HALF TRAP TO CONNECT TO EXIST. 12" RCP) REMOVE EXISTING INLET	⑬ STA. 114+41.57, 16.66' RT. INLET TYPE A WITH TYPE 3 F. & G. RIM = 685.40 INV. = 682.15
--	--



FILE NAME = L:\Litchfield\1582805\0-0-CADD_Sheets\09	USER NAME = Kristin Timmons	DESIGNED - BB	REVISED -	CITY OF LITCHFIELD LITCHFIELD, ILLINOIS	PLAN AND PROFILE SARGENT STREET	F.A. RTE.	SECTION	COUNTY	TOTAL SHEETS	SHEET NO.
PLT SCALE = 48.0000' / in.	CHECKED - KLT	DRAWN - RAH	REVISED -			15-00036-00-PV	MONTGOMERY	23	9	
PLT DATE = 1/11/2017	DATE - 1/12/17	CHECKED - KLT	REVISED -			CONTRACT NO. 93683				
						FED. ROAD DIST. NO.	ILLINOIS FED. AID PROJECT			



MAINTENANCE OF TRAFFIC GENERAL NOTES

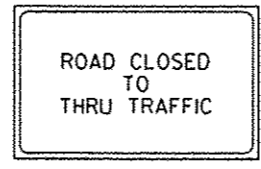
1. ALL SIGNING SHALL BE IN ACCORDANCE WITH THE APPLICABLE PROVISIONS OF THE STATE OF ILLINOIS "STANDARD SPECIFICATIONS FOR ROAD AND BRIDGE CONSTRUCTION" ADOPTED APRIL 1, 2016 THE DETAILS IN THESE PLANS AND THE LATEST EDITION OF THE STATE OF ILLINOIS "MANUAL ON UNIFORM TRAFFIC CONTROL DEVICES".
2. ALL MAINTENANCE OF TRAFFIC SIGNS SHALL BE PROVIDED, PLACED AND MAINTAINED BY THE CONTRACTOR.
3. THE ENGINEER AND THE CITY SHALL BE NOTIFIED IN WRITING AT LEAST TWO WEEKS PRIOR TO THE DAY THAT THE ROAD IS TO BE CLOSED.
4. ALL ROAD CLOSURE SIGNS SHALL BE POST MOUNTED UNLESS OTHERWISE NOTED.
5. ALL EXISTING SIGNING THAT IS NOT APPLICABLE WHILE THE ROAD CLOSURE IS IN EFFECT SHALL BE REMOVED OR COMPLETELY COVERED BY THE CONTRACTOR. THIS WORK SHALL BE CONSIDERED INCLUDED IN THE COST OF TRAFFIC CONTROL AND PROTECTION, (SPECIAL).
6. FOR STABILIZATION, ALL TYPE III BARRICADES SHALL REQUIRE A MINIMUM OF 8 SANDBAGS PER BARRICADE.



W20-3 (0) (484B)
POST MOUNTED
W/ LIGHT
SIGN PANEL No. 1



W20-3 (484B)
POST MOUNTED
W/ LIGHT
SIGN PANEL No. 2



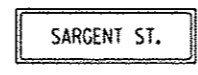
R11-4 (4830)
TYPE III BARRICADE MOUNTED
W/ LIGHTS
SIGN PANEL No. 3



M5-1L (0) (2115)
POST MOUNTED
SIGN PANEL No. 4



M5-1R (0) (2115)
POST MOUNTED
SIGN PANEL No. 5



W21-1B (0) (4818)
POST MOUNTED
SIGN PANEL No. 6

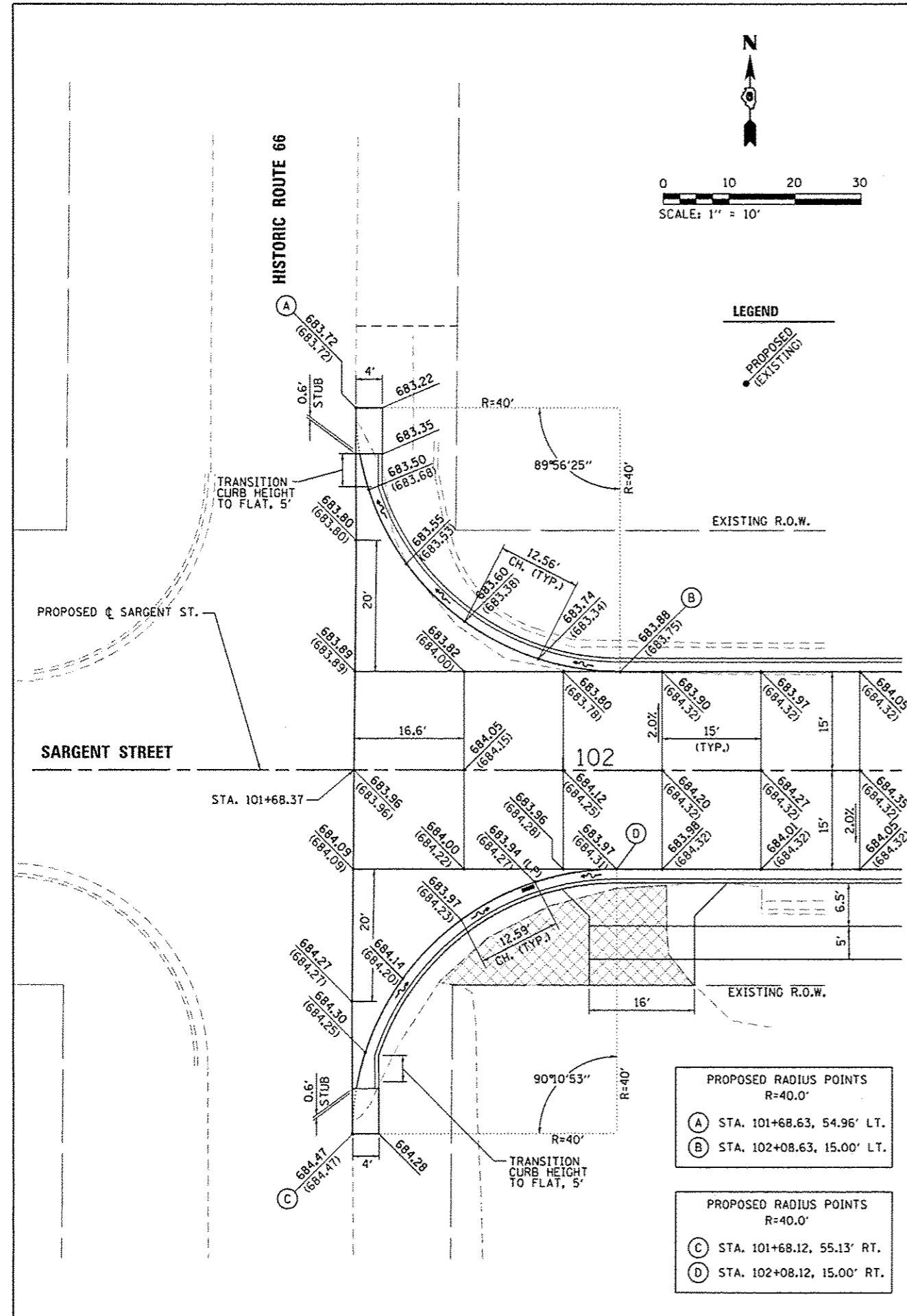


R11-1101-(2418)
TYPE I BARRICADE MOUNTED
SIGN PANEL No. 7

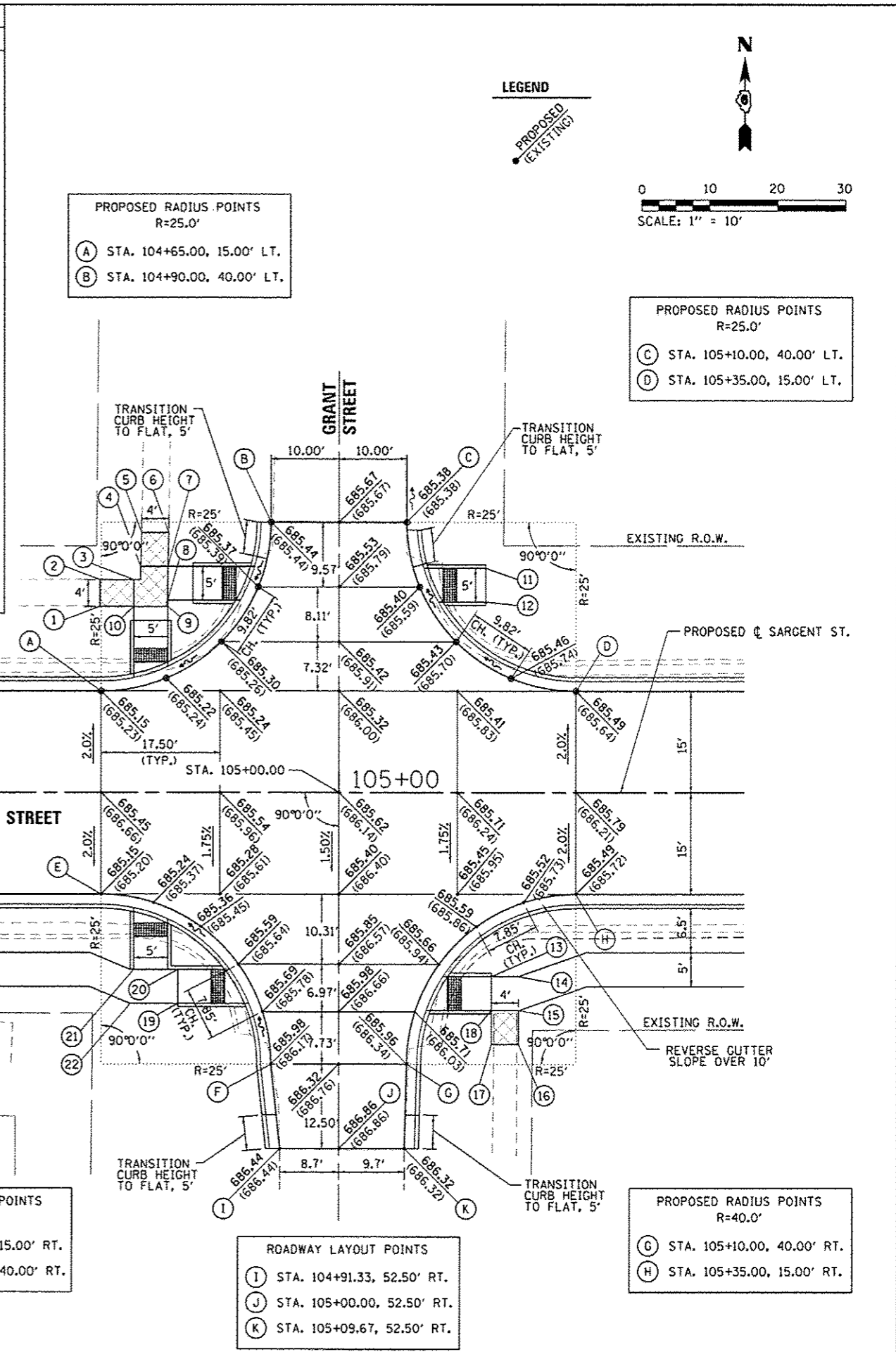
LEGEND

- WORK AREA
- SIGN PANEL ON PERMANENT SUPPORT
- TYPE III BARRICADE
- ALTERNATE ROUTE/ACCESS
- TYPE I BARRICADE

FILE NAME *	USER NAME * Kristin Timmons	DESIGNED - BB	REVISED -	CITY OF LITCHFIELD LITCHFIELD, ILLINOIS	MAINTENANCE OF TRAFFIC PLAN SARGENT STREET			F.A. RTE.	SECTION	COUNTY	TOTAL SHEETS	SHEET NO.
L:\Litchfield\1502805\Draw\CA00_Sheets\08_0693683-MOT Plot.dgn	PLOT SCALE * 1/31/2017	DRAWN - RAH	REVISED -					15-00036-00-PV	MONTGOMERY	23	10	
Default	PLOT DATE * 1/11/2017	CHECKED - KLT	REVISED -					CONTRACT NO. 93683				
	DATE - 1/12/17	REVISI -	REVISED -					ILLINOIS FED. AID PROJECT				
				SCALE:	SHEET	OF	SHEETS	STA.	TO STA.			



SIDEWALK LAYOUT POINTS			
PT.	STATION	OFFSET	ELEVATION
1	STA. 104+64.79	27.53' LT.	686.08 (EX.)
2	STA. 104+64.79	31.53' LT.	686.05 (EX.)
3	STA. 104+69.79	31.53' LT.	685.92
4	STA. 104+70.79	33.45' LT.	685.98
5	STA. 104+70.93	38.45' LT.	686.08 (EX.)
6	STA. 104+74.93	38.45' LT.	686.12 (EX.)
7	STA. 104+74.79	33.45' LT.	685.90
8	STA. 104+74.79	28.45' LT.	685.81
9	STA. 104+74.79	27.52' LT.	685.80
10	STA. 104+69.79	27.53' LT.	685.84
11	STA. 105+21.66	33.20' LT.	685.86
12	STA. 105+21.66	28.20' LT.	685.79
13	STA. 105+22.54	27.08' RT.	686.15
14	STA. 105+26.54	27.08' RT.	686.23
15	STA. 105+26.54	32.08' RT.	686.33
16	STA. 105+26.54	37.08' RT.	686.65 (EX.)
17	STA. 105+22.54	37.08' RT.	686.64 (EX.)
18	STA. 105+22.54	32.08' RT.	686.25
19	STA. 104+76.30	31.08' RT.	685.86
20	STA. 104+76.30	26.08' RT.	685.77
21	STA. 104+69.79	26.08' RT.	685.68
22	STA. 104+69.29	31.08' RT.	685.78



FILE NAME =	USER NAME = Kristin Timmons	DESIGNED - BB	REVISED -
L:\Litchfield\1502805\Draw\CADD_Sheets\15-00036-00-INT_DET.dgn		DRAWN - RAH	REVISED -
		CHECKED - KLT	REVISED -
Default	PLOT DATE = 1/11/2017	DATE - 1/12/17	REVISED -

**CITY OF LITCHFIELD
LITCHFIELD, ILLINOIS**

**INTERSECTION DETAILS
HISTORIC ROUTE 66 / SARGENT STREET
GRANT STREET / SARGENT STREET**

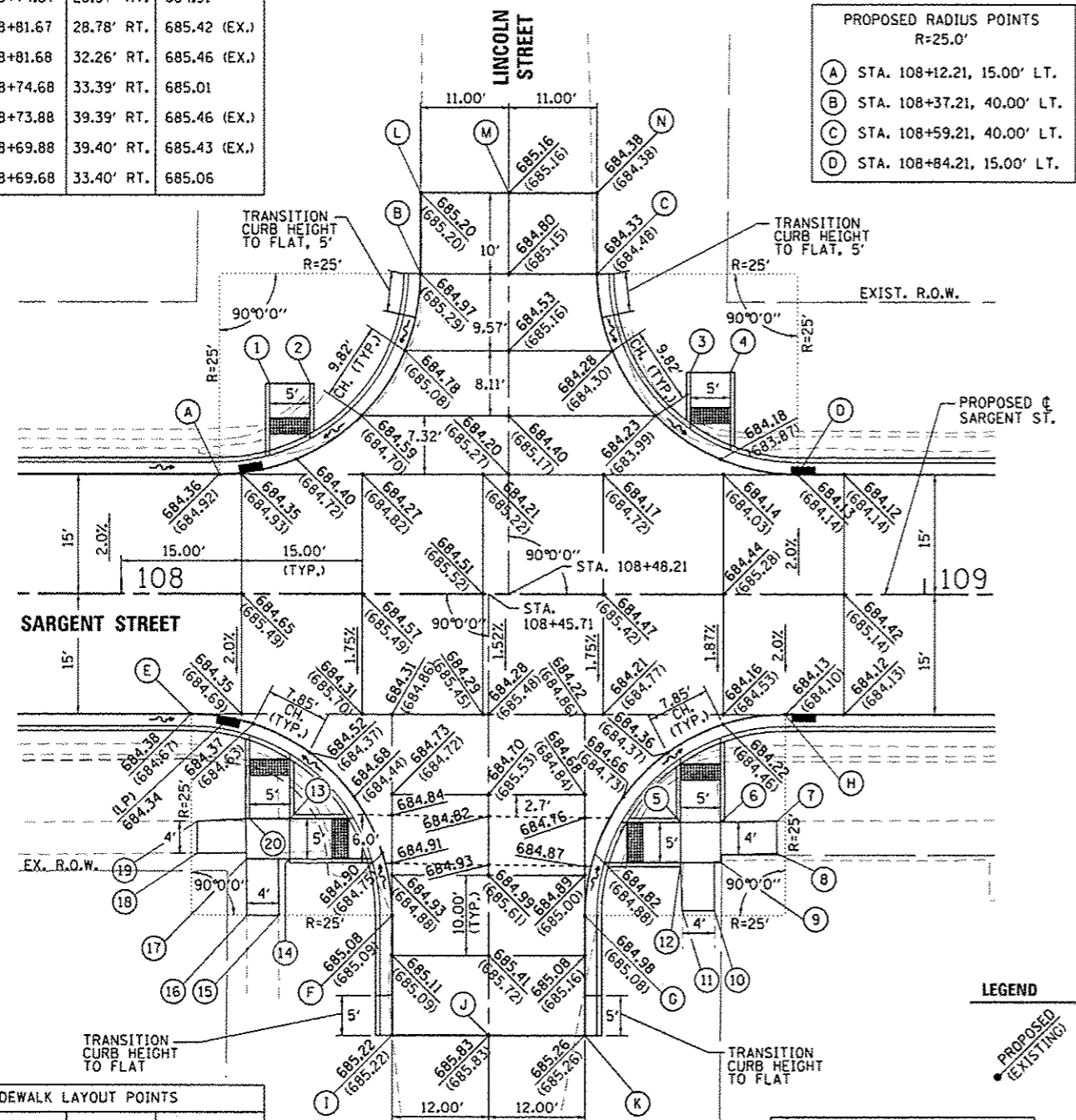
SCALE: 1"=10' SHEET OF SHEETS STA. TO STA.

F.A. RTE.	SECTION	COUNTY	TOTAL SHEETS	SHEET NO.
	15-00036-00-PV	MONTGOMERY	23	11
CONTRACT NO. 93683			ILLINOIS FED. AID PROJECT	

SIDEWALK LAYOUT POINTS			
PT.	STATION	OFFSET	ELEVATION
1	STA. 108+18.46	26.32' LT.	684.90 (EX.)
2	STA. 108+23.46	26.32' LT.	684.99 (EX.)
3	STA. 108+70.87	27.74' LT.	684.56 (EX.)
4	STA. 108+76.37	27.74' LT.	684.65
5	STA. 108+69.67	28.40' RT.	684.96
6	STA. 108+74.67	28.37' RT.	684.91
7	STA. 108+81.67	28.78' RT.	685.42 (EX.)
8	STA. 108+81.68	32.26' RT.	685.46 (EX.)
9	STA. 108+74.68	33.39' RT.	685.01
10	STA. 108+73.88	39.39' RT.	685.46 (EX.)
11	STA. 108+69.88	39.40' RT.	685.43 (EX.)
12	STA. 108+69.68	33.40' RT.	685.06

PROPOSED LAYOUT POINTS		
L	STA. 108+37.21, 50.00' LT.	
M	STA. 108+48.21, 50.00' LT.	
N	STA. 108+59.21, 50.00' LT.	

PROPOSED RADIUS POINTS R=25.0'		
A	STA. 108+12.21, 15.00' LT.	
B	STA. 108+37.21, 40.00' LT.	
C	STA. 108+59.21, 40.00' LT.	
D	STA. 108+84.21, 15.00' LT.	



SIDEWALK LAYOUT POINTS			
PT.	STATION	OFFSET	ELEVATION
13	STA. 108+20.96	28.01' RT.	685.15
14	STA. 108+20.97	33.51' RT.	685.25
15	STA. 108+19.60	40.01' RT.	685.67 (EX.)
16	STA. 108+15.60	40.02' RT.	685.74 (EX.)
17	STA. 108+15.58	33.02' RT.	685.16
18	STA. 108+09.46	32.33' RT.	685.64 (EX.)
19	STA. 108+09.46	28.33' RT.	685.57 (EX.)
20	STA. 108+15.96	28.01' RT.	685.06

PROPOSED LAYOUT POINTS		
I	STA. 108+33.71, 55.00' RT.	
J	STA. 108+45.71, 55.00' RT.	
K	STA. 108+57.71, 55.00' RT.	

PROPOSED RADIUS POINTS R=25.0'		
E	STA. 108+08.71, 15.00' RT.	
F	STA. 108+33.71, 40.00' RT.	
G	STA. 108+57.71, 40.00' RT.	
H	STA. 108+82.71, 15.00' RT.	

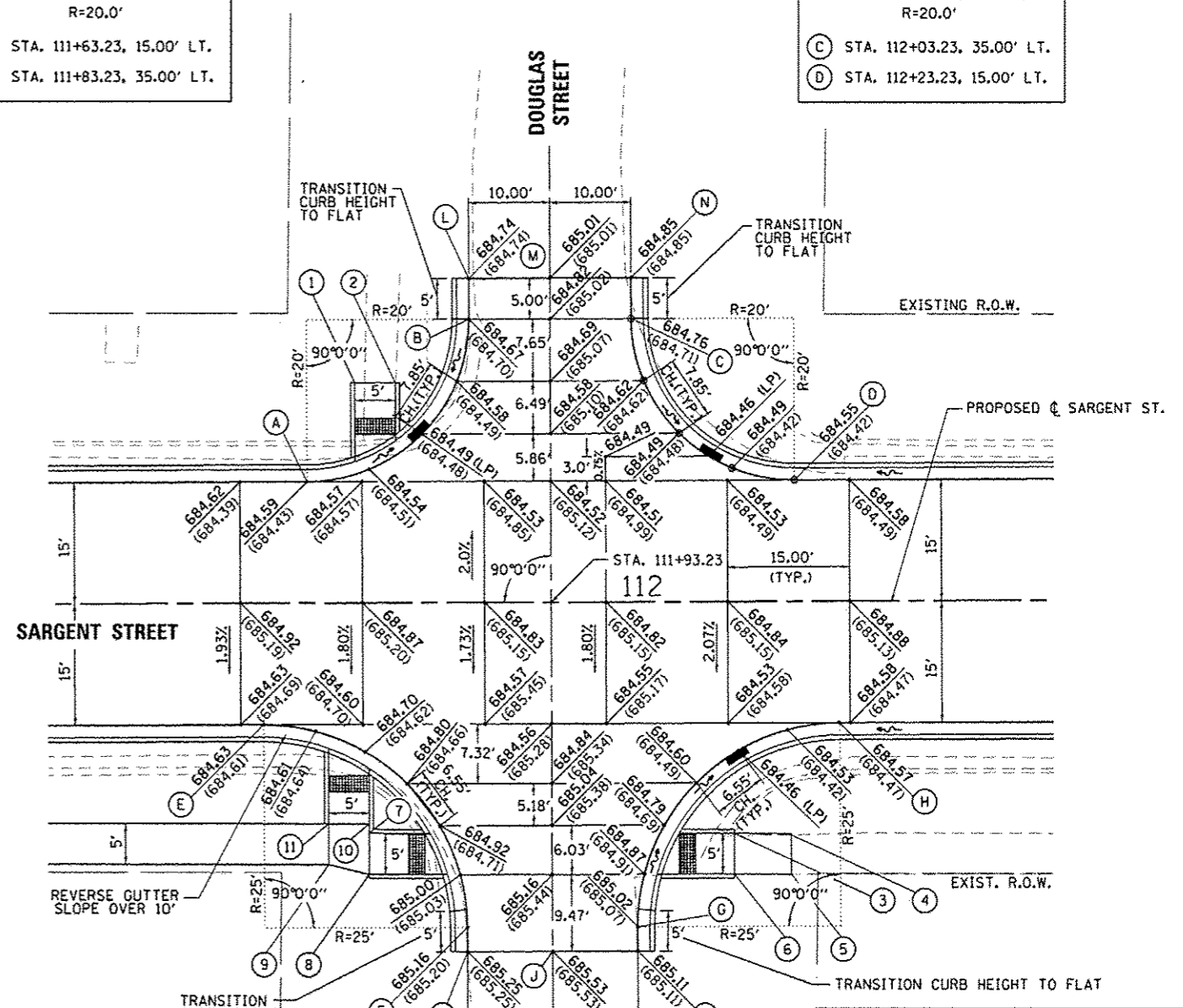
LEGEND
 PROPOSED
 EXISTING

LEGEND
 PROPOSED
 EXISTING

PROPOSED RADIUS POINTS R=20.0'		
A	STA. 111+63.23, 15.00' LT.	
B	STA. 111+83.23, 35.00' LT.	

PROPOSED LAYOUT POINTS		
L	STA. 111+82.23, 40.00' LT.	
M	STA. 111+93.23, 40.00' LT.	
N	STA. 112+02.73, 40.00' LT.	

PROPOSED RADIUS POINTS R=20.0'		
C	STA. 112+03.23, 35.00' LT.	
D	STA. 112+23.23, 15.00' LT.	



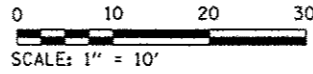
PROPOSED RADIUS POINTS R=25.0'		
E	STA. 111+57.81, 15.00' RT.	
F	STA. 111+82.73, 40.00' RT.	
G	STA. 112+03.73, 40.00' RT.	
H	STA. 112+28.65, 15.00' RT.	

PROPOSED LAYOUT POINTS		
I	STA. 111+82.73, 43.00' RT.	
J	STA. 111+93.23, 43.00' RT.	
K	STA. 112+02.73, 43.00' RT.	

SIDEWALK LAYOUT POINTS			
PT.	STATION	OFFSET	ELEVATION
1	STA. 111+69.17	27.21' LT.	684.65 (EX.)
2	STA. 111+74.17	27.21' LT.	684.75
3	STA. 112+15.69	28.53' RT.	684.95
4	STA. 112+22.69	28.62' RT.	685.09 (EX.)
5	STA. 112+22.69	33.62' RT.	685.19
6	STA. 112+15.69	33.53' RT.	685.04
7	STA. 111+70.73	28.43' RT.	685.13
8	STA. 111+70.71	33.46' RT.	685.23
9	STA. 111+65.73	32.23' RT.	685.12
10	STA. 111+70.73	27.25' RT.	685.11
11	STA. 111+65.73	27.23' RT.	685.02

LEGEND

PROPOSED
(EXISTING)



PROPOSED RADIUS POINTS
R=25.0'

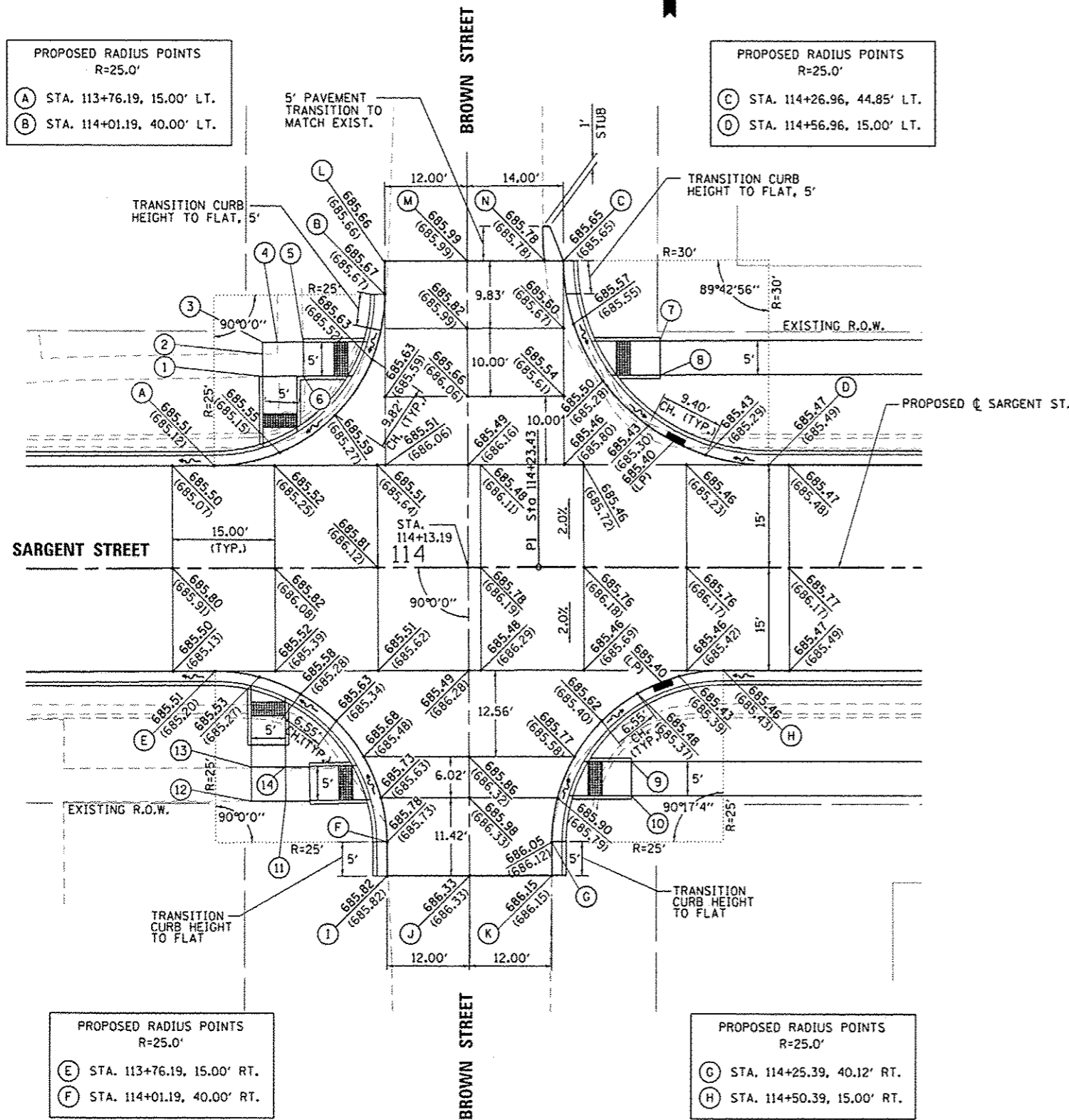
(A) STA. 113+76.19, 15.00' LT.
(B) STA. 114+01.19, 40.00' LT.

PROPOSED RADIUS POINTS
R=25.0'

(C) STA. 114+26.96, 44.85' LT.
(D) STA. 114+56.96, 15.00' LT.

PROPOSED LAYOUT POINTS

(L) STA. 114+01.19, 44.83' LT.
(M) STA. 114+13.19, 44.83' LT.
(N) STA. 114+24.24, 44.84' LT.



SIDEWALK LAYOUT POINTS			
PT.	STATION	OFFSET	ELEVATION
1	STA. 113+83.33	28.07' LT.	685.95 (EX.)
2	STA. 113+83.33	31.34' LT.	686.01 (EX.)
3	STA. 113+83.33	33.07' LT.	686.02
4	STA. 113+85.47	33.07' LT.	685.98 (EX.)
5	STA. 113+89.27	33.07' LT.	685.99 (EX.)
6	STA. 113+89.27	28.07' LT.	686.05
7	STA. 114+41.08	33.16' LT.	685.89
8	STA. 114+41.09	28.16' LT.	685.80
9	STA. 114+36.99	28.28' RT.	685.89
10	STA. 114+37.00	33.28' RT.	685.98
11	STA. 113+86.43	33.94' RT.	686.29
12	STA. 113+81.43	33.94' RT.	686.19
13	STA. 113+81.43	28.94' RT.	686.09
14	STA. 113+86.43	28.95' RT.	686.19

PROPOSED RADIUS POINTS
R=25.0'

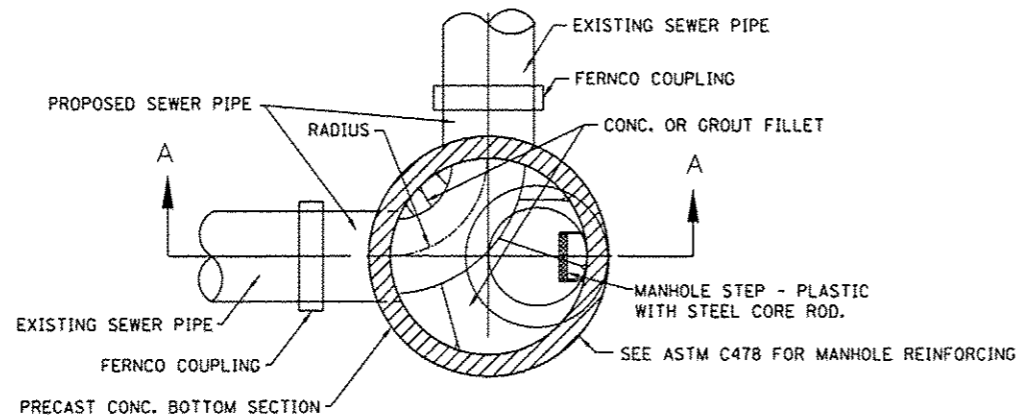
(E) STA. 113+76.19, 15.00' RT.
(F) STA. 114+01.19, 40.00' RT.

PROPOSED RADIUS POINTS
R=25.0'

(G) STA. 114+25.39, 40.12' RT.
(H) STA. 114+50.39, 15.00' RT.

PROPOSED LAYOUT POINTS

(I) STA. 114+01.19, 45.00' RT.
(J) STA. 114+13.19, 45.00' RT.
(K) STA. 114+25.41, 45.00' RT.

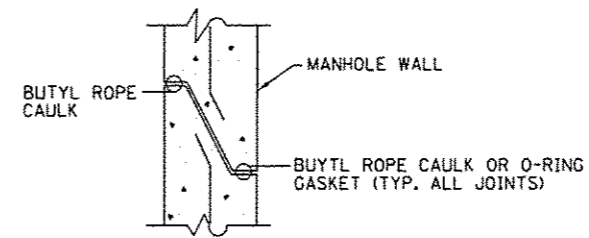


**PLAN
SANITARY MANHOLE**

N.T.S.

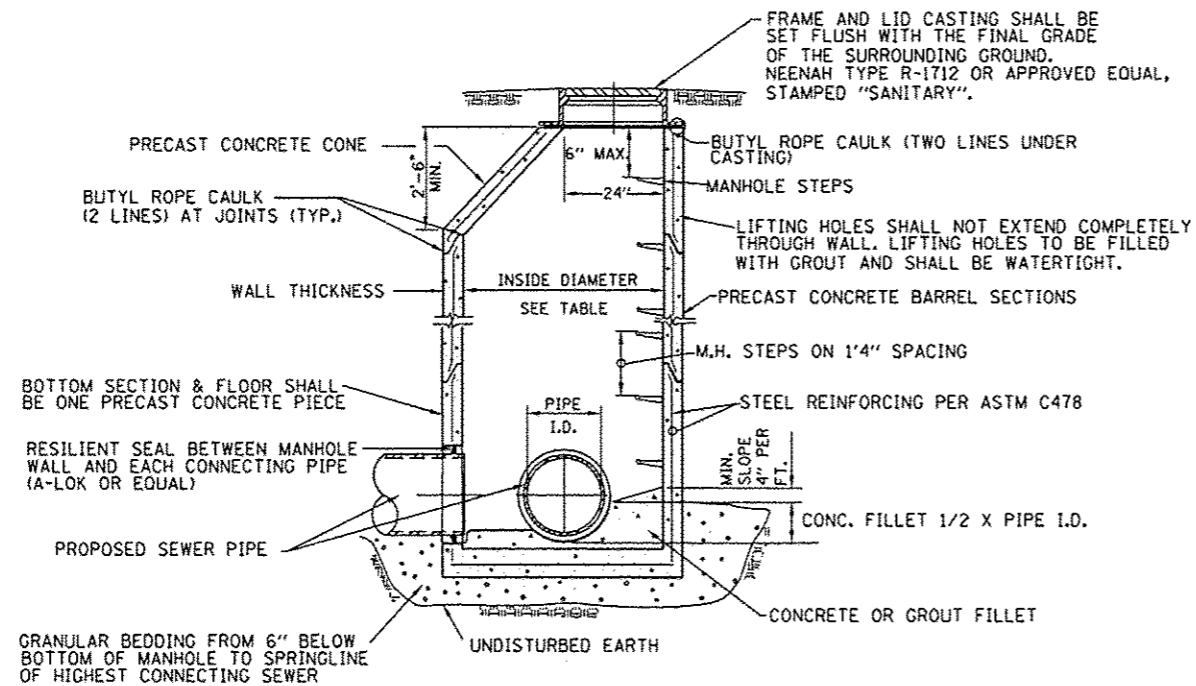
MANHOLE TYPE	INSIDE DIA.	MIN. WALL THICKNESS
A-4	4'-0"	5"
A-5	5'-0"	6"

NOTE:
INVERT FLOWLINE AT BENDS SHALL HAVE A HORIZONTAL RADIUS EQUAL TO OR LARGER THAN THE PIPE DIAMETER.
FLOW CHANNEL SHALL HAVE A SEMI-CIRCULAR CROSS SECTION



TYP. SANITARY MANHOLE WALL JOINT

N.T.S.



**SECTION A-A
SANITARY MANHOLE**

N.T.S.

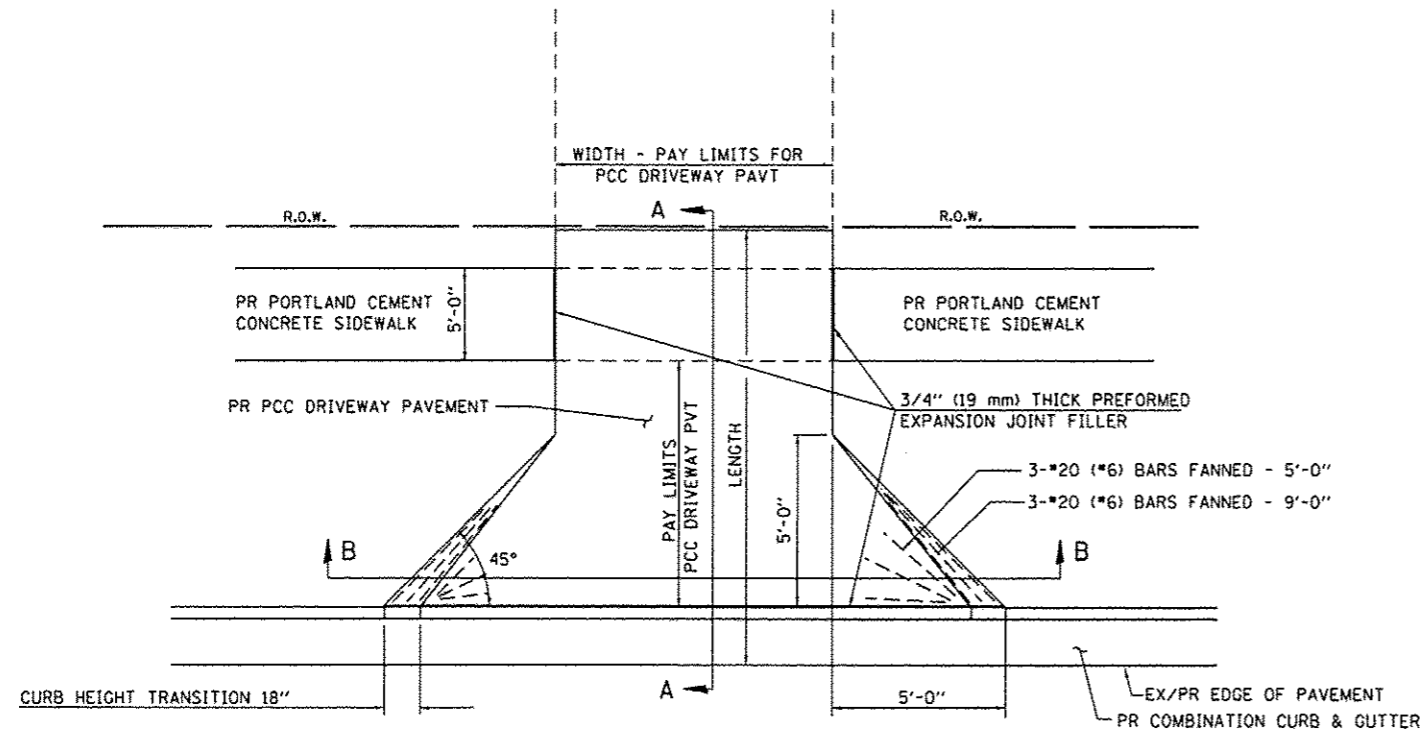
FILE NAME =	USER NAME = Kristin Timmons	DESIGNED - BB	REVISED -
L:\Litchfield\1502805\Draw\CADD_Sheets\15-00036-00-01-015_0693683-shr-Misc-Details.dgn		DRAWN - RAH	REVISED -
		CHECKED - KLT	REVISED -
		DATE - 1/12/17	REVISED -

**CITY OF LITCHFIELD
LITCHFIELD, ILLINOIS**

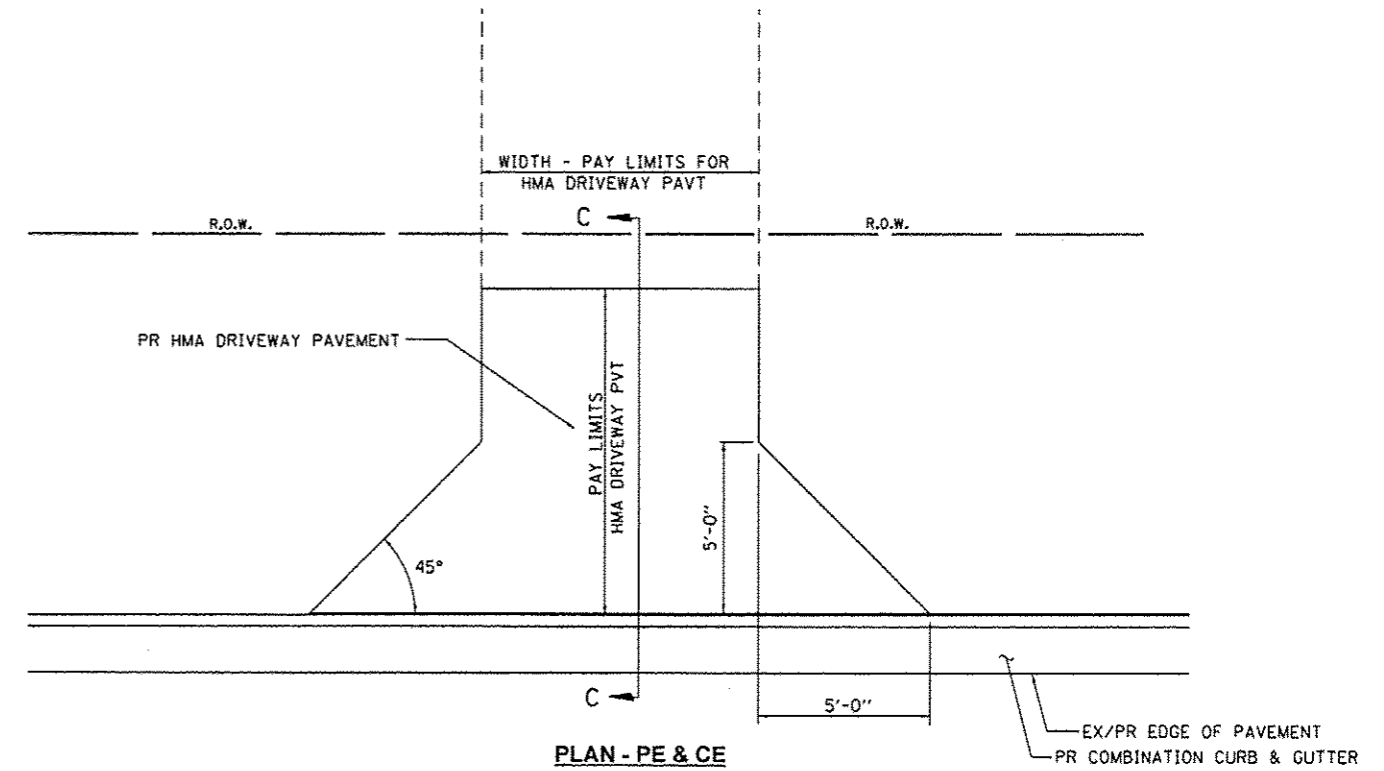
**MISCELLANEOUS DETAILS
SARGENT STREET**

F.A. RTE.	SECTION	COUNTY	TOTAL SHEETS	SHEET NO.
	15-00036-00-PV	MONTGOMERY	23	14
CONTRACT NO. 93683				
ILLINOIS FED. AID PROJECT				

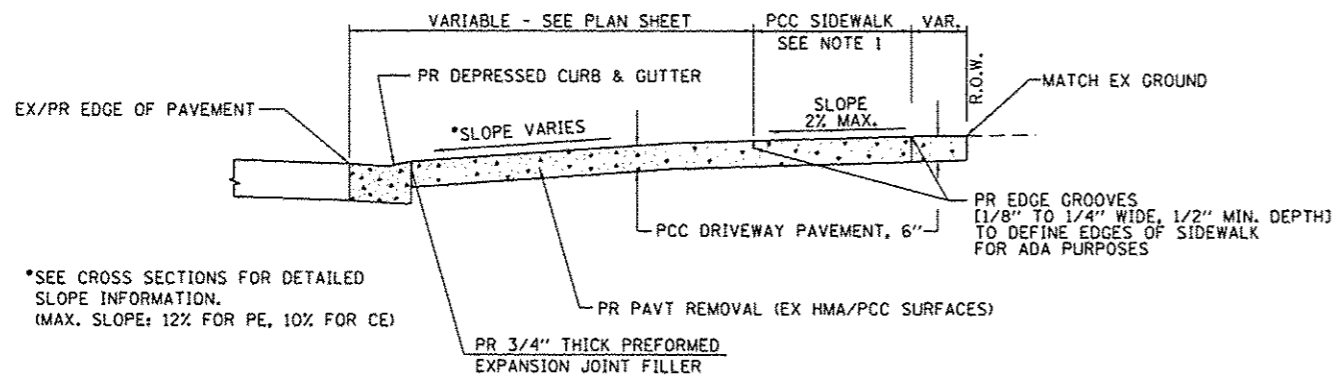
SCALE: N/A SHEET 1 OF 2 SHEETS STA. TO STA.



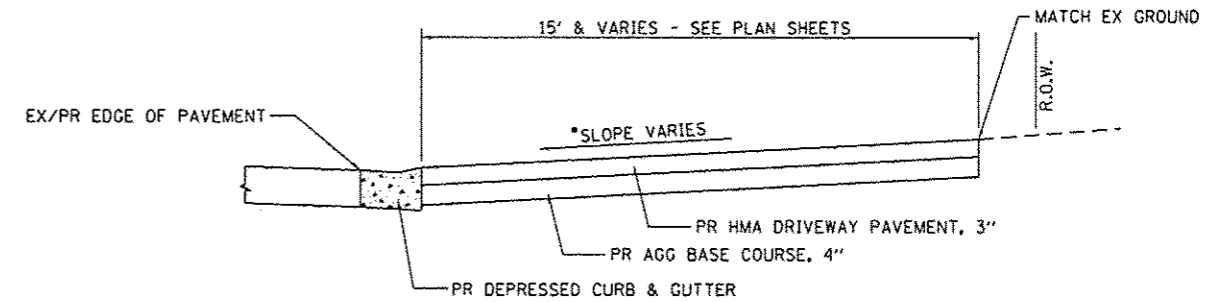
PLAN - PE & CE



PLAN - PE & CE

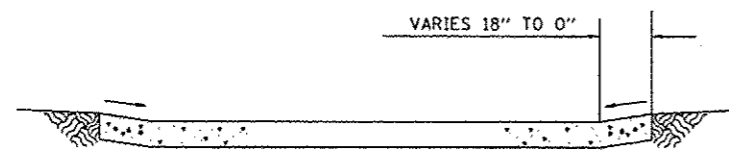


SECTION A - A



SECTION C - C

*SEE CROSS SECTIONS FOR DETAILED SLOPE INFORMATION. (MAX. SLOPE: 12% FOR PE, 10% FOR CE)



SECTION B - B

- NOTES:
1. SEE PLAN SHEETS FOR LOCATION OF SIDEWALK.
 2. THE COST OF FURNISHING AND INSTALLING THE 3/4" PREFORMED EXPANSION JOINT FILLER AND REINFORCEMENT BARS SHALL BE INCLUDED IN THE COST OF P.C.C. DRIVEWAY PAVEMENT.

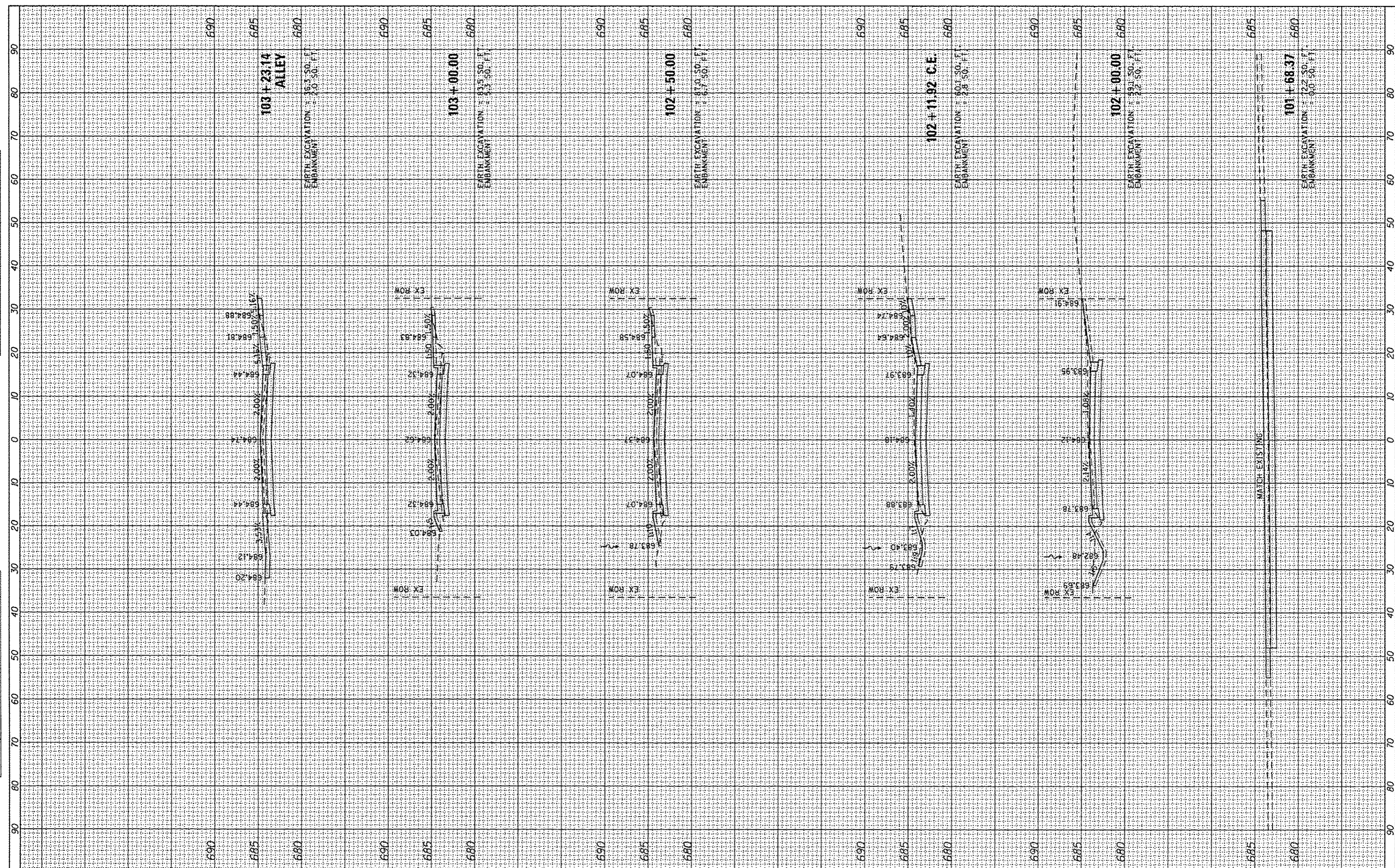
PORTLAND CEMENT CONCRETE ENTRANCE/ALLEY DETAIL

HOT-MIX ASPHALT ENTRANCE/ALLEY DETAIL

FILE NAME =	USER NAME = Kristin Timmons	DESIGNED - BB	REVISED -	CITY OF LITCHFIELD LITCHFIELD, ILLINOIS	DETAILS FOR ENTRANCES & ALLEYS SARGENT STREET		F.A. RTE.	SECTION	COUNTY	TOTAL SHEETS	SHEET NO.
L:\Litchfield\1502005\Draw\C400.Sheets\4-015_0693683-ent-Misc-Details.dgn	PLDT SCALE = 48.0003' / in.	DRAWN - RAH	REVISED -		15-00036-00-PV	MONTGOMERY	23	15			
Default	PLDT DATE = 1/11/2017	CHECKED - KLT	REVISED -		SCALE: N/A SHEET 2 OF 2 SHEETS STA. TO STA.		CONTRACT NO. 93683				
		DATE - 1/12/17	REVISED -		ILLINOIS FED. AID PROJECT						

FINAL SURVEY	DATE
STARTED	
NOTE BOOK	
NO.	
AREAS CHECKED	

ORIGINAL SURVEY	DATE
STARTED	
NOTE BOOK	
NO.	
AREAS CHECKED	



FILE NAME =	USER NAME = Kristin Timmons	DESIGNED -	BB	REVISED -	
L:\Litchfield\1502805\Draw\CA00_Sheets\06-sht-XSC.dgn		DRAWN -	RAH	REVISED -	
		CHECKED -	KLT	REVISED -	
		DATE -	1/12/17	REVISED -	

**CITY OF LITCHFIELD
LITCHFIELD, ILLINOIS**

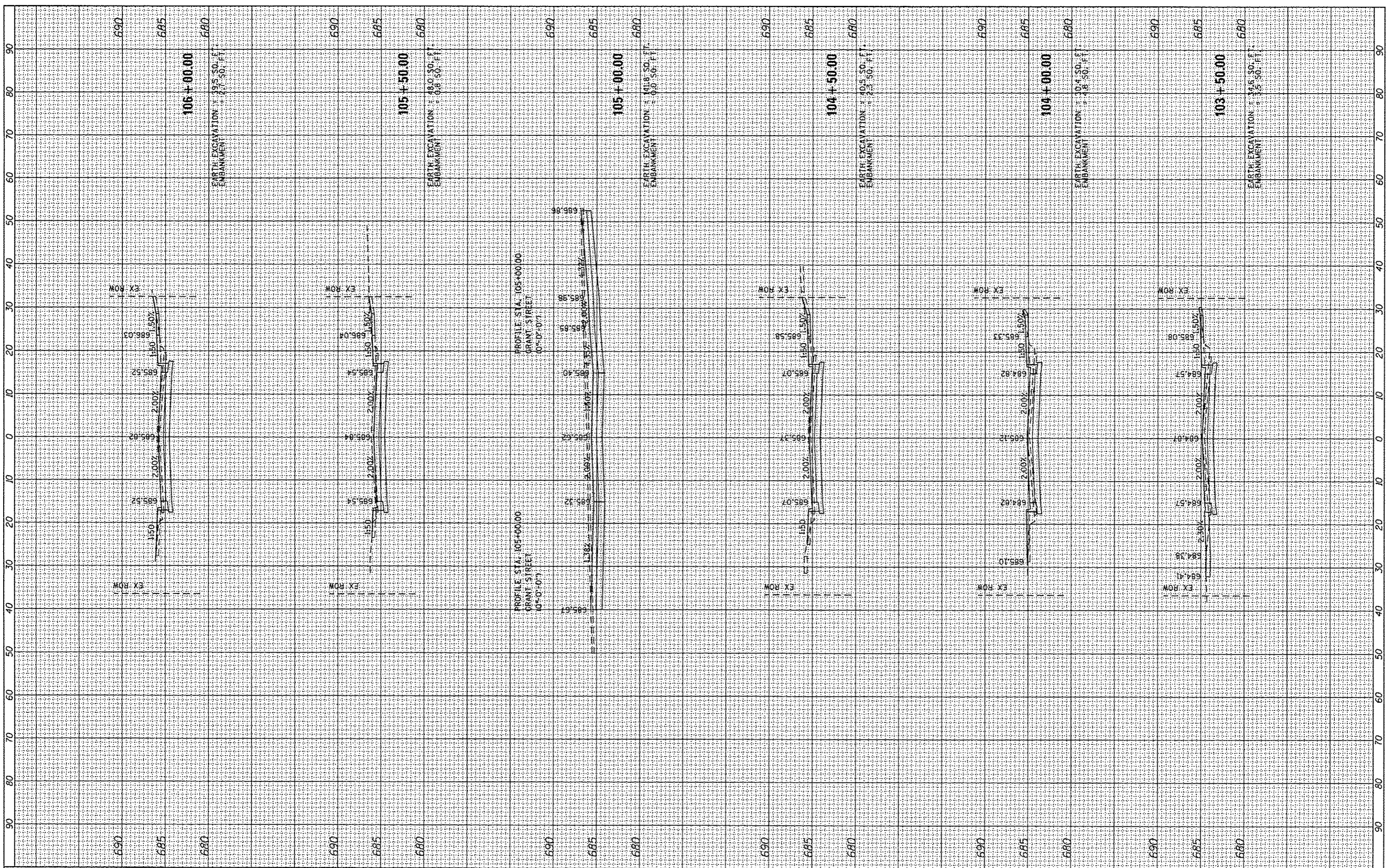
**CROSS SECTIONS
SARGENT STREET**

SCALE: SHEET 1 OF 8 SHEETS STA. 101+68.37 TO STA. 103+23.00

F.A. RTE.	SECTION	COUNTY	TOTAL SHEETS	SHEET NO.
	15-00036-00-PV	MONTGOMERY	23	16
			CONTRACT NO. 93683	
ILLINOIS FED. AID PROJECT				

FINAL	DATE
SURVEY	
PLOTTED	
NOTE BOOK	
NO.	

ORIGINAL	DATE
SURVEY	
PLOTTED	
NOTE BOOK	
NO.	



FILE NAME =
 L:\Litchfield\1502005\Draw\CADD_Sheets\06-shr-3C.dgn

USER NAME = Kristin Timmons
 DESIGNED - BB
 DRAWN - RAH
 CHECKED - KLT
 DATE - 1/12/17

REVISIONS
 REVISED -
 REVISED -
 REVISED -
 REVISED -

**CITY OF LITCHFIELD
 LITCHFIELD, ILLINOIS**

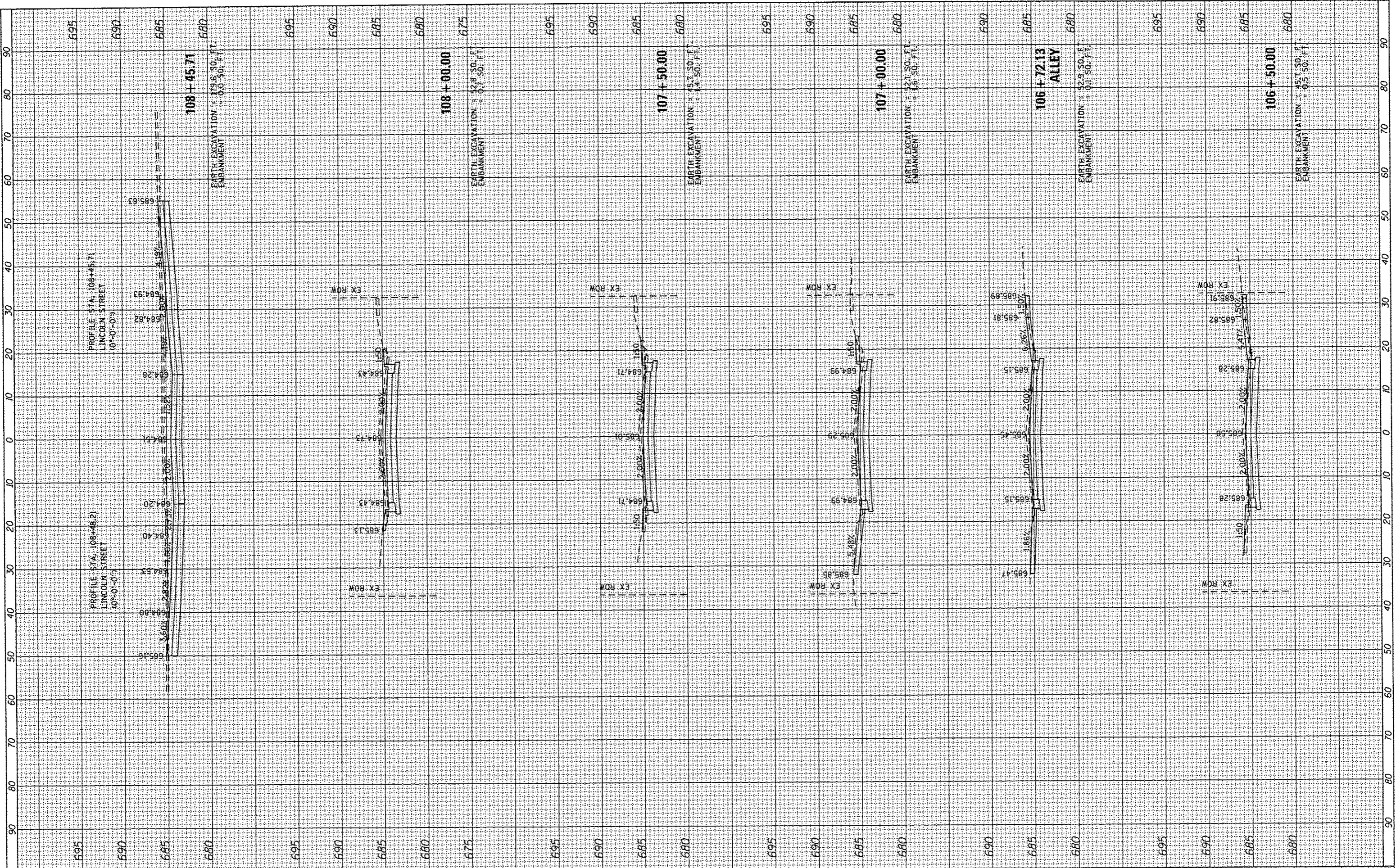
**CROSS SECTIONS
 SARGENT STREET**

SCALE: SHEET 2 OF 8 SHEETS STA. 103+50.00 TO STA. 106+00.00

F.A. RTE.	SECTION	COUNTY	TOTAL SHEETS	SHEET NO.
	15-00036-00-PV	MONTGOMERY	23	17
CONTRACT NO. 93683				
ILLINOIS FED. AID PROJECT				

FINAL SURVEY	SUPPORTED	DATE
NOTE BOOK	PLOTTED	
NO.	TEMPLATE	
	AREAS CHECKED	
	AREAS CHECKED	

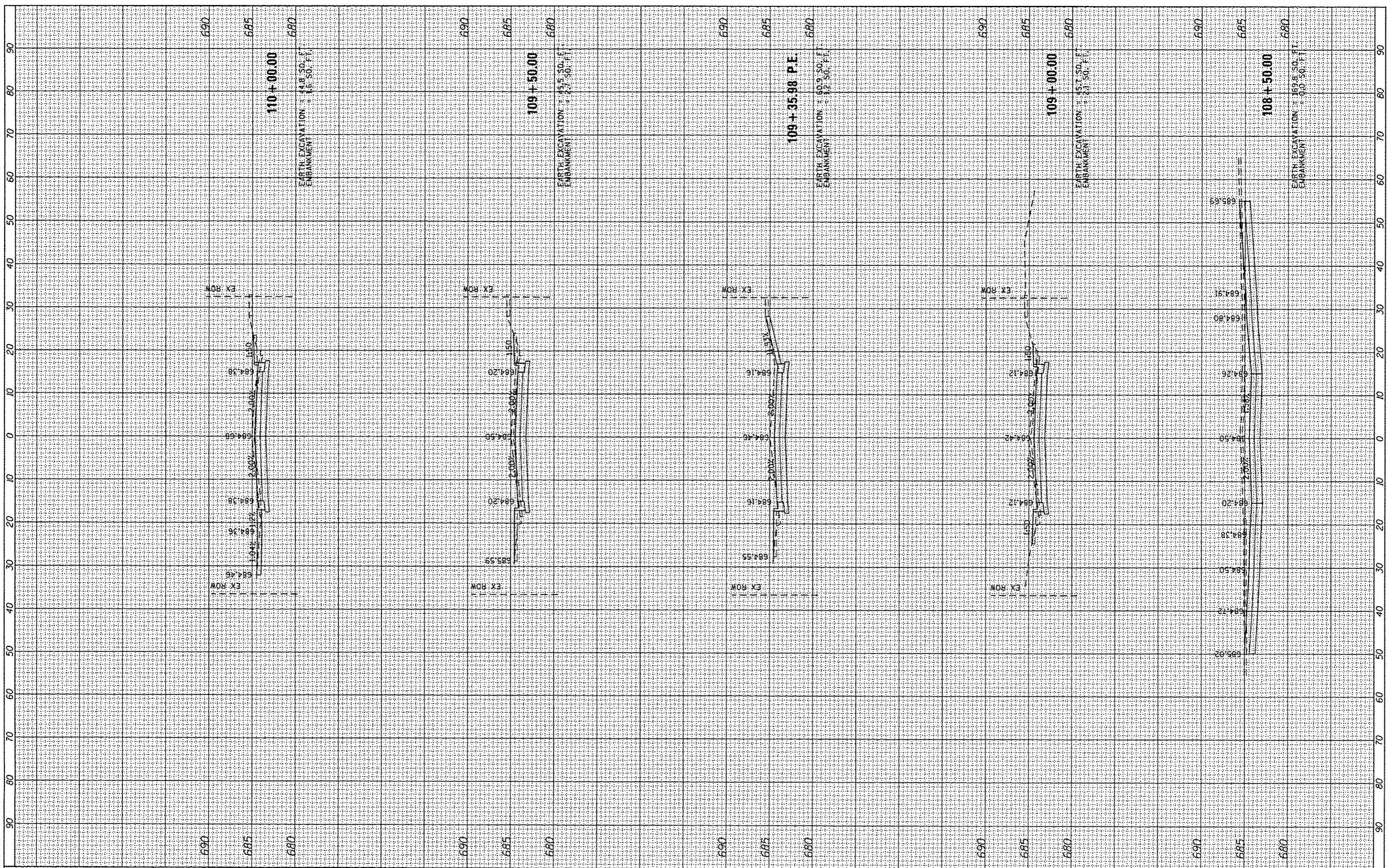
ORIGINAL SURVEY	SUPPORTED	DATE
NOTE BOOK	PLOTTED	
NO.	TEMPLATE	
	AREAS CHECKED	
	AREAS CHECKED	



FILE NAME = L:\Litchfield\1582885\0-ou\1000.Sheets\06-sh-XSC.dgn	USER NAME = Kristin Timmons	DESIGNED - BB	REVISED -	CITY OF LITCHFIELD LITCHFIELD, ILLINOIS	CROSS SECTIONS SARGENT STREET		F.A. RTE.	SECTION	COUNTY	TOTAL SHEETS	SHEET NO.	
Default	PLOT SCALE = 28.0000' / in.	DRAWN - RAH	REVISED -		SCALE:	SHEET 3 OF 8 SHEETS	STA. 106+50.00 TO STA. 108+45.71	15-00036-00-PV	MONTGOMERY	23	18	
	PLOT DATE = 1/4/2017	CHECKED - KLT	REVISED -									CONTRACT NO. 93683
		DATE - 1/12/17	REVISED -									ILLINOIS FED. AID PROJECT

FINAL SURVEY	DATE
SURVEY	BT
NOTED	
PLOTTED	
TEMPLATE	
AREAS CHECKED	
NO.	

ORIGINAL SURVEY	DATE
SURVEY	BT
NOTED	
PLOTTED	
TEMPLATE	
AREAS CHECKED	
NO.	



FILE NAME =
 L:\Litchfield\1502805\Draw\CADD_Sheets\06-sh1-SC.dgn

USER NAME = Kristin Timmons
 PLOT SCALE = 20.0000" / 1"
 PLOT DATE = 1/4/2017

DESIGNED - BB
 DRAWN - RAH
 CHECKED - KLT
 DATE - 1/12/17

REVISED -
 REVISED -
 REVISED -
 REVISED -

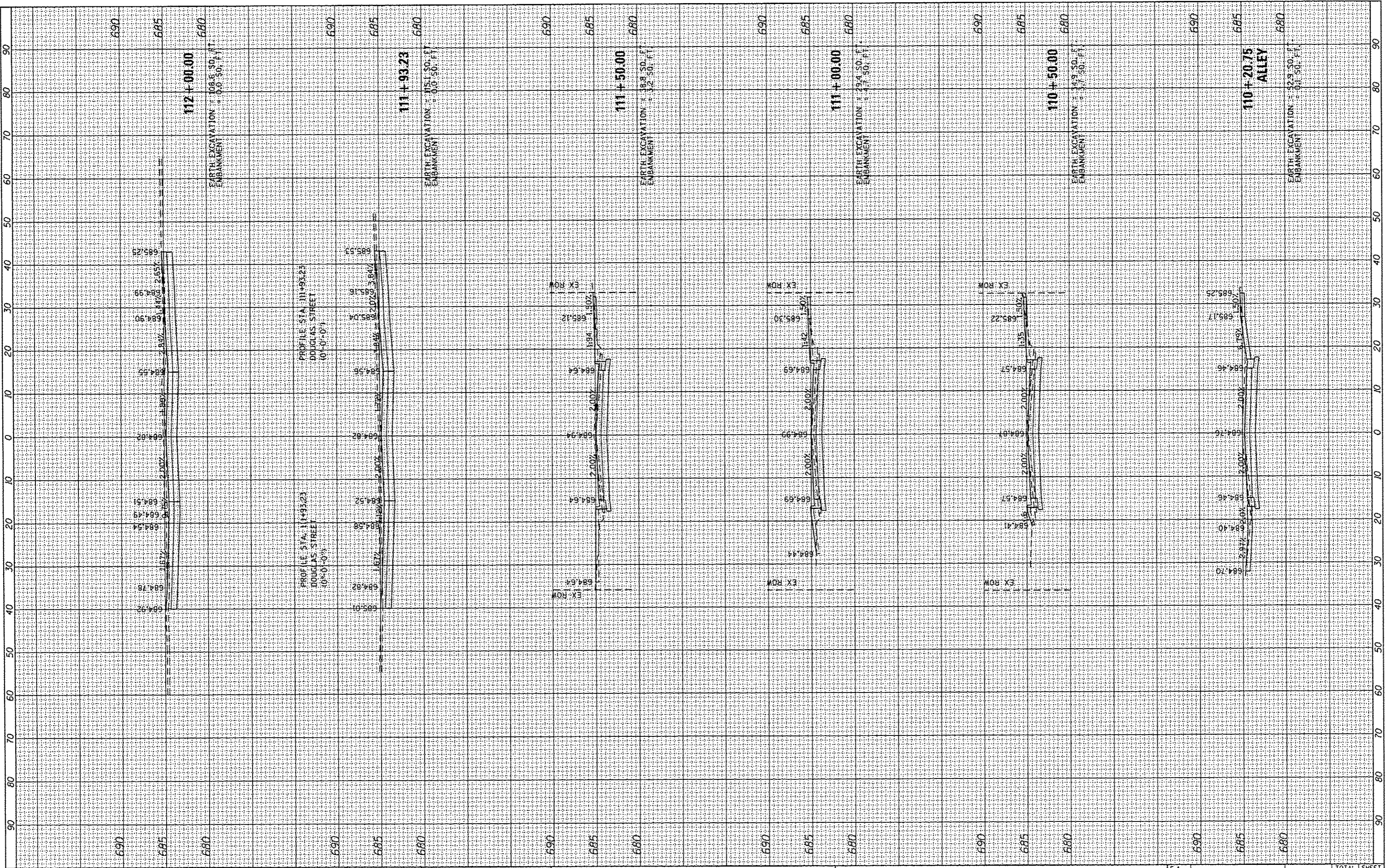
**CITY OF LITCHFIELD
 LITCHFIELD, ILLINOIS**

SCALE: SHEET 4 OF 8 SHEETS STA. 108+50.00 TO STA. 110+00.00

**CROSS SECTIONS
 SARGENT STREET**

F.A. RTE.	SECTION	COUNTY	TOTAL SHEETS	SHEET NO.
	15-00036-00-PV	MONTGOMERY	23	19
CONTRACT NO. 93683			ILLINOIS FED. AID PROJECT	

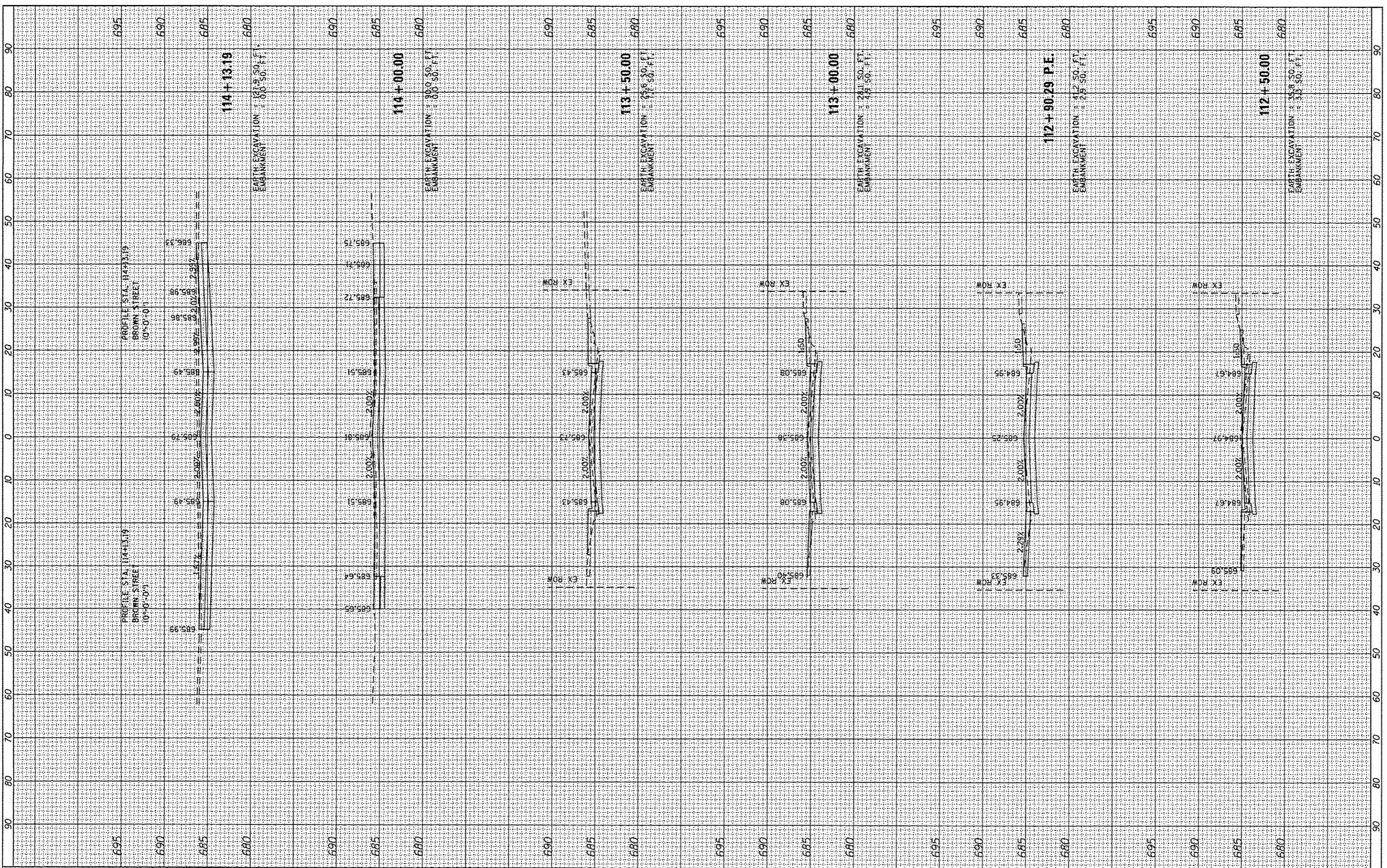
ORIGINAL SURVEY	DATE
SURVEY	BT
PLOTTED	
TEMPLATE	
AREAS CHECKED	
NO.	



FILE NAME = L:\Litchfield\1502005\Draw\CADD_Sheets\06-sht-5.dgn	USER NAME = Kristin Timmons	DESIGNED - BB	REVISED -	<p align="center">CITY OF LITCHFIELD LITCHFIELD, ILLINOIS</p>	<p align="center">CROSS SECTIONS SARGENT STREET</p>		F.A. RTE.	SECTION	COUNTY	TOTAL SHEETS	SHEET NO.
Default	PLOT SCALE = 20.0000 / in.	DRAWN - RAH	REVISED -		SCALE:	SHEET 5 OF 8 SHEETS	STA. 110+20.75 TO STA. 112+00.00	15-00036-00-PV	MONTGOMERY	23	20
	PLOT DATE = 1/4/2017	CHECKED - KLT	REVISED -					CONTRACT NO. 93683			
		DATE - 1/12/17	REVISED -					ILLINOIS FED. AID PROJECT			

FINAL SURVEY	DATE
SURVEYED	BY
PLOTTED	
NOTE BOOK	
NO.	
AREAS CHECKED	

ORIGINAL SURVEY	DATE
SURVEYED	BY
PLOTTED	
NOTE BOOK	
NO.	
AREAS CHECKED	



FILE NAME =	USER NAME = Kristin Timmons	DESIGNED - BB	REVISED -	CITY OF LITCHFIELD LITCHFIELD, ILLINOIS	CROSS SECTIONS SARGENT STREET	F.A. RTE.	SECTION	COUNTY	TOTAL SHEETS	SHEET NO.
L:\Litchfield\1582805\Draw\CA00_Sheets\06-shr-XSC.dgn	DESIGNED - RAH	REVISED -	15-00036-00-PV			MONTGOMERY	23	21		
Default	CHECKED - KLT	REVISED -	CONTRACT NO. 93683							
PLOT SCALE = 20.0000' / in.	DATE - 1/12/17	REVISED -	ILLINOIS FED. AID PROJECT							
PLOT DATE = 1/4/2017				SCALE:	SHEET 6 OF 8 SHEETS	STA. 112+50.00 TO STA. 114+13.19				

