

STATE OF ILLINOIS
DEPARTMENT OF TRANSPORTATION

F.A. RTE.	SECTION	COUNTY	TOTAL SHEETS	SHEET NO.
	PARK ROADS 2017-04	ROCK ISLAND	5	1
		ILLINOIS	CONTRACT NO. 46436	

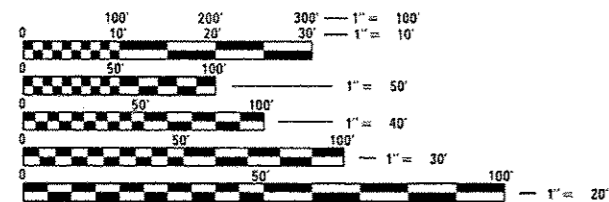
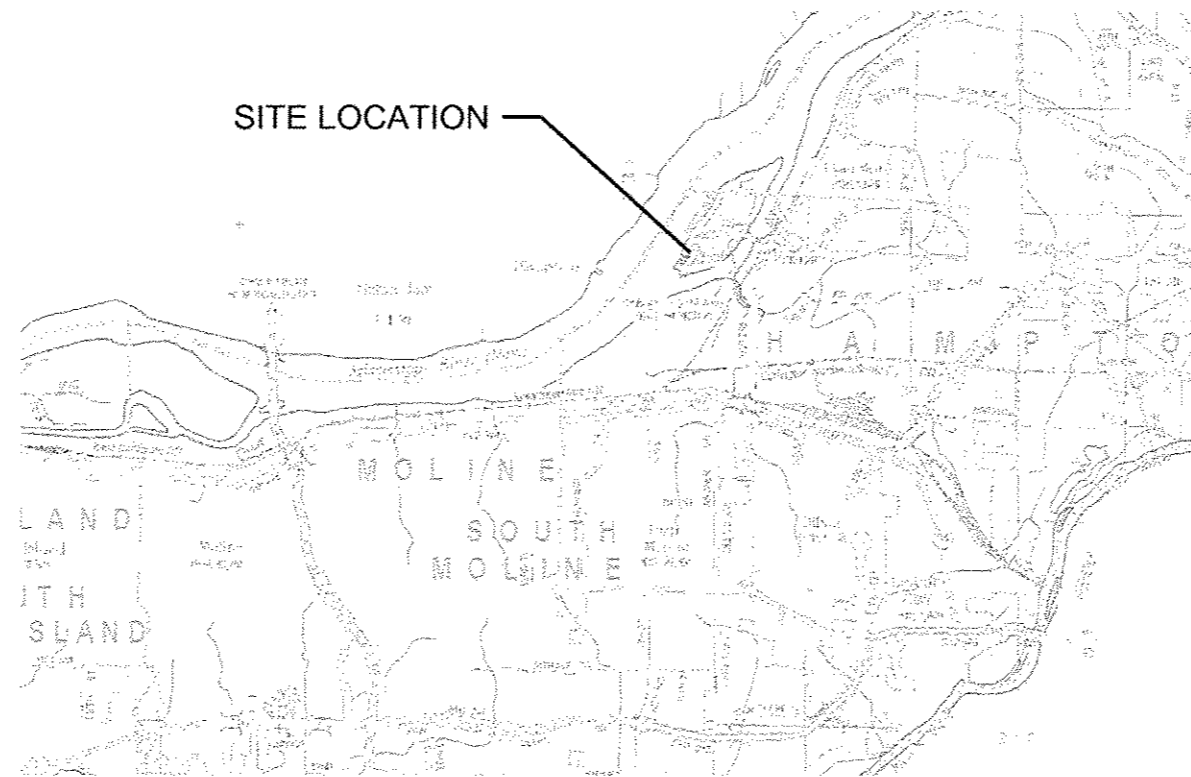
FOR INDEX OF SHEETS, SEE SHEET NO. 02

PROPOSED HIGHWAY PLANS

IHPA PARK ROADS
SECTION PARK ROADS 2017-04

SIDEWALK REPAIR AND LOT SEALING
ROCK ISLAND COUNTY

C-30-022-17



FULL SIZE PLANS HAVE BEEN PREPARED USING STANDARD ENGINEERING SCALES. REDUCED SIZED PLANS WILL NOT CONFORM TO STANDARD SCALES. IN MAKING MEASUREMENTS ON REDUCED PLANS, THE ABOVE SCALES MAY BE USED.

J.U.I.E.
JOINT UTILITY LOCATION INFORMATION FOR EXCAVATION
1-800-892-0123
OR 811

PROJECT ENGINEER VINCE MADONIA 217 /782-4074

GROSS AND NET LENGTH = SPOT IMPROVEMENT

CONTRACT NO. 46436

STATE OF ILLINOIS
DEPARTMENT OF TRANSPORTATION

SUBMITTED DECEMBER 30, 2016

[Signature] REGIONAL ENGINEER

Jan 27, 2017

[Signature] ENGINEER OF DESIGN AND ENVIRONMENT

Jan 27, 2017

[Signature] DIRECTOR OF PROGRAM DEVELOPMENT

PRINTED BY THE AUTHORITY
OF THE STATE OF ILLINOIS

REV

GENERAL NOTES:

1. ANY REFERENCE TO A STANDARD IN THESE PLANS SHALL BE INTERPRETED TO MEAN THE EDITION AS INDICATED BY THE SUB NUMBER LISTED IN THE INDEX OF SHEETS OR THE COPY OF THE STANDARD INCLUDED IN THESE PLANS.
2. IN ADDITION TO FIELD SURVEYS, PLAN DIMENSIONS AND DETAILS RELATIVE TO THE EXISTING FACILITIES HAVE BEEN TAKEN FROM EXISTING PLANS AND ARE SUBJECT TO CONSTRUCTION VARIATIONS. IT SHALL BE THE CONTRACTOR'S RESPONSIBILITY TO VERIFY SUCH DIMENSIONS AND DETAILS IN THE FIELD. SUCH VARIATIONS SHALL NOT BE A CAUSE FOR ADDITIONAL COMPENSATION DUE TO A CHANGE IN THE SCOPE OF WORK; HOWEVER, THE CONTRACTOR WILL BE PAID FOR THE QUANTITY ACTUALLY FURNISHED AT THE UNIT PRICE BID FOR THE WORK.
3. THE CONTRACTOR SHALL BE RESPONSIBLE FOR PROTECTING UTILITY PROPERTY FROM CONSTRUCTION OPERATIONS, AS OUTLINED IN ARTICLE 107.31 OF THE STANDARD SPECIFICATIONS. THE J.U.L.I.E. NUMBER IS 1-800-892-0123. A MINIMUM OF 48 HOURS ADVANCE NOTICE IS REQUIRED.

HIGHWAY STANDARDS

000001-06
 701901-06
 728001-01
 729001-01
 780001-05

INDEX OF SHEETS

1. COVER SHEET
2. STANDARDS AND GENERAL NOTES
3. SUMMARY OF QUANTITIES
4. PLAN VIEW
5. DETAILS

FILE NAME *	USER NAME * #USER#	DESIGNED -	REVISED -	STATE OF ILLINOIS DEPARTMENT OF TRANSPORTATION	STANDARDS AND GENERAL NOTES		F.A. RTE.	SECTION	COUNTY	TOTAL SHEETS	SHEET NO.
#FILE#		DRAWN -	REVISED -					PARK ROADS 2017-04	ROCK ISLAND	5	2
#MODELNAME#		CHECKED -	REVISED -		SCALE:	SHEET 1 OF 1 SHEETS	STA.	TO STA.	CONTRACT NO. 46436		
		DATE -	REVISED -						ILLINOIS FED. AID PROJECT		

11/10/17

PARK ROADS
100% STATE
ROADWAY

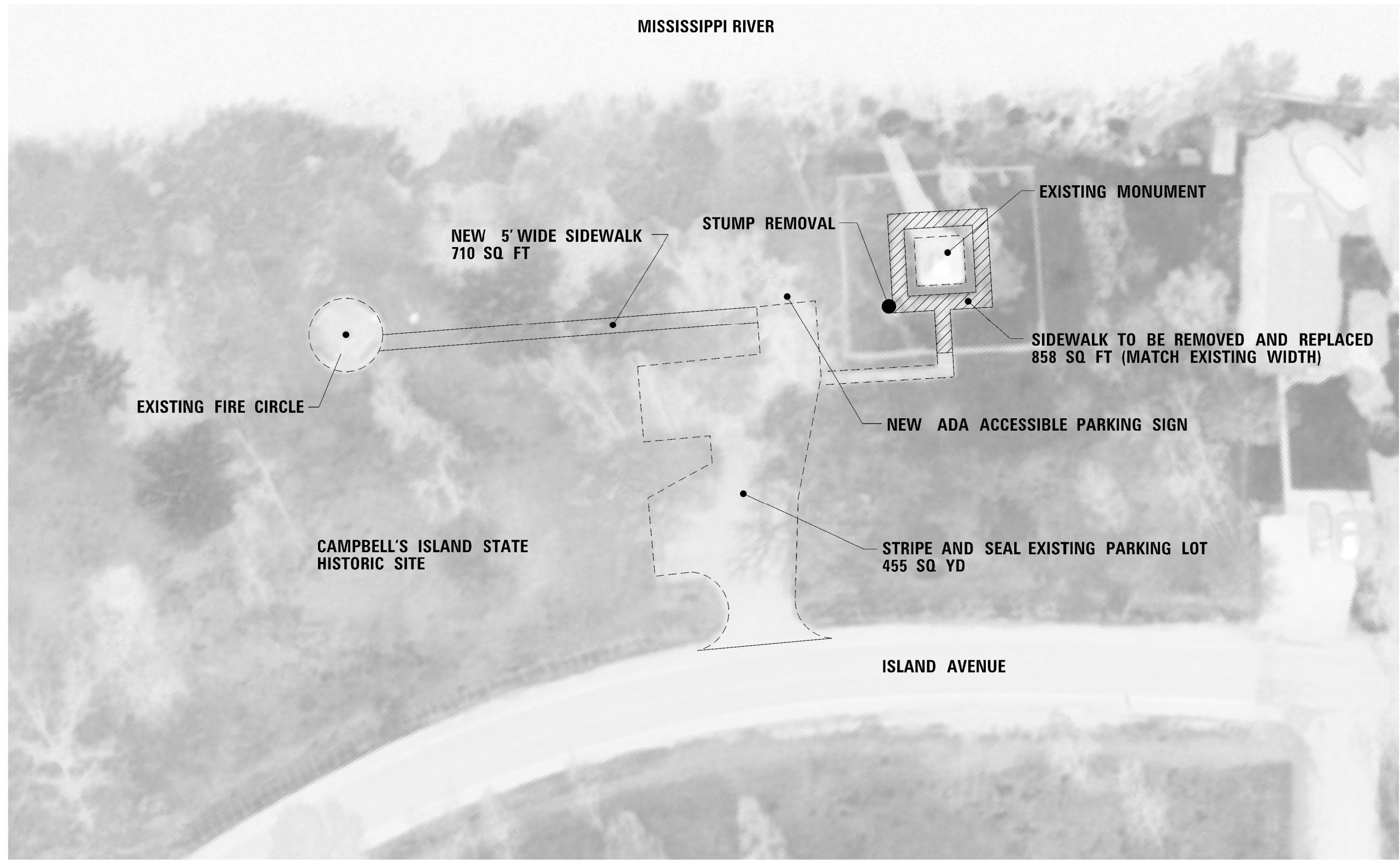
CODE NO.	ITEM	UNIT	TOTAL QUANTITY	0005 RURAL
20200100	EARTH EXCAVATION	CU YD	9	9
42400200	PORTLAND CEMENT CONCRETE SIDEWALK 5 INCH	SQ FT	1568	1568
44000600	SIDEWALK REMOVAL	SQ FT	858	858
63400105	GUARD POSTS	EACH	30	30
67100100	MOBILIZATION	LSUM	1	1
* 72000100	SIGN PANEL, TYPE 1	SQ FT	2	2
* 72800100	TELESCOPING STEEL SIGN SUPPORT	FT	12	12
* 78001100	PAINT PAVEMENT MARKING - LETTERS AND SYMBOLS	SQ FT	3.1	3.1
* 78001110	PAINT PAVEMENT MARKING - LINE 4"	FOOT	120	120
* 78001130	PAINT PAVEMENT MARKING - LINE 6"	FOOT	100	100
X0300019	REMOVE AND REINSTALL PARKING BLOCKS	EACH	7	7
X0325800	PARKING LOT SEAL COAT	SQ YD	567	567

12

* SPECIALTY ITEM

FILE NAME *	USER NAME * #USER*	DESIGNED - VJM	REVISED -	STATE OF ILLINOIS DEPARTMENT OF TRANSPORTATION	SUMMARY OF QUANTITIES				F.A. RTE.	SECTION	COUNTY	TOTAL SHEETS	SHEET NO.	
#FILE#		DRAWN - VJM	REVISED -		SCALE:	SHEET	OF	SHEETS	STA.	TO STA.	PARK ROADS 2017-04	ROCK ISLAND	05	03
#MODELNAME#		CHECKED -	REVISED -		CONTRACT NO. 46436									
		DATE -	REVISED -		ILLINOIS FED. AID PROJECT									

REV



MISSISSIPPI RIVER

EXISTING MONUMENT

NEW 5' WIDE SIDEWALK
710 SQ FT

STUMP REMOVAL

SIDEWALK TO BE REMOVED AND REPLACED
858 SQ FT (MATCH EXISTING WIDTH)

EXISTING FIRE CIRCLE

NEW ADA ACCESSIBLE PARKING SIGN

CAMPBELL'S ISLAND STATE
HISTORIC SITE

STRIPE AND SEAL EXISTING PARKING LOT
455 SQ YD

ISLAND AVENUE

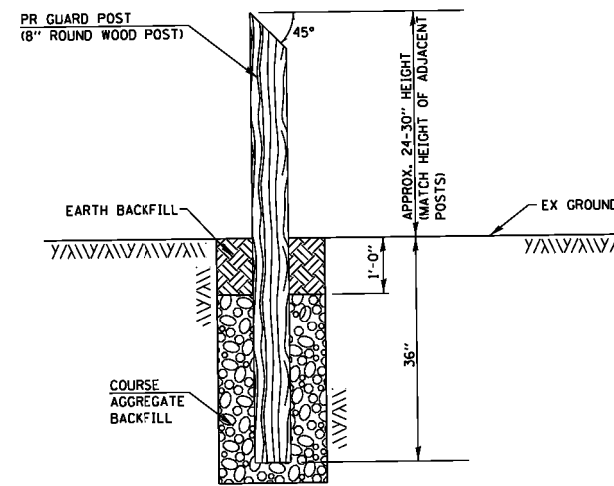
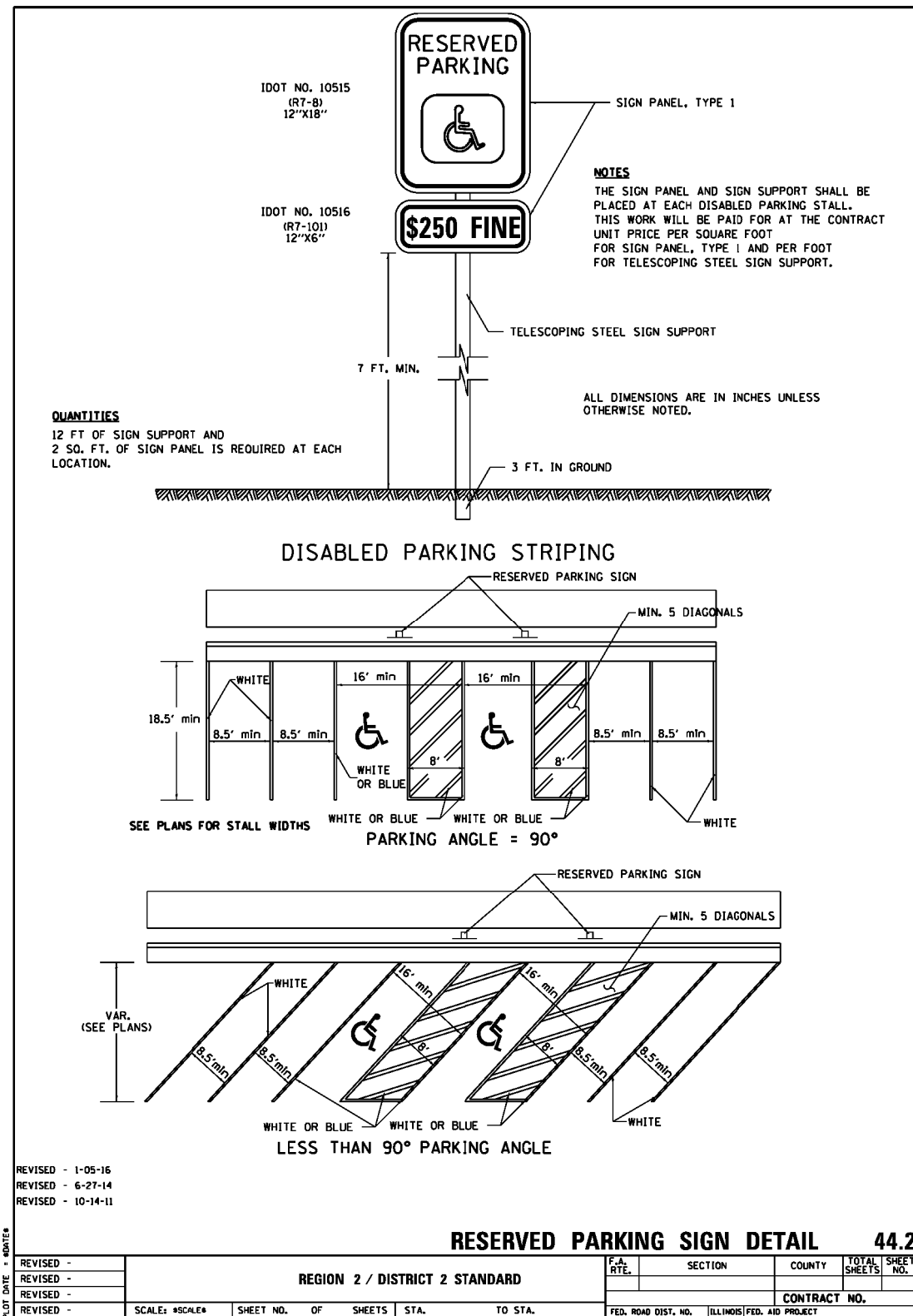
FILE NAME =	USER NAME = #USER#	DESIGNED - VJM	REVISED -
#FILEL#		DRAWN - VJM	REVISED -
	PLOT SCALE = #SCALE#	CHECKED -	REVISED -
#MODELNAME#	PLOT DATE = #DATE#	DATE -	REVISED -

STATE OF ILLINOIS
DEPARTMENT OF TRANSPORTATION

PLAN VIEW			
SCALE: NTS	SHEET 05 OF 05 SHEETS	STA.	TO STA.

F.A. RTE.	SECTION	COUNTY	TOTAL SHEETS	SHEET NO.
	PARK ROADS 2017-04	ROCK ISLAND	05	04
CONTRACT NO. 46436				
ILLINOIS FED. AID PROJECT				

RESERVED PARKING SIGN DETAIL



SECTION THRU POST
GUARD POST DETAIL

- NOTES:**
- 1.) PROPOSED GUARDPOSTS USED TO REPLACE MISSING OR DETERIORATED POSTS. REMOVAL OF EXISTING POSTS TO BE INCLUDED IN THE COST OF 'GUARD POST'.
 - 2.) ALL LABOR, EQUIPMENT, AND MATERIALS NECESSARY FOR INSTALLATION OF GUARD POSTS AS DETAILED HEREIN SHALL BE INCLUDED IN THE COST FOR "GUARD POSTS".

FILE NAME =	USER NAME = #USER#	DESIGNED - VJM	REVISED -	STATE OF ILLINOIS DEPARTMENT OF TRANSPORTATION	DETAILS			F.A. RTE.	SECTION	COUNTY	TOTAL SHEETS	SHEET NO.
#FILEL#		DRAWN - VJM	REVISED -					PARK ROADS 2017-04	ROCK ISLAND	05	05	
#MODELNAME#		CHECKED -	REVISED -					CONTRACT NO. 46436				
		DATE -	REVISED -		SCALE: NTS	SHEET 05 OF 05 SHEETS	STA. TO STA.	ILLINOIS FED. AID PROJECT				