

STATE OF ILLINOIS
DEPARTMENT OF TRANSPORTATION

FAI R.T.E.	SECTION	COUNTY	TOTAL SHEETS	SHEET NO.
64	82-(8,9) PP-1	ST. CLAIR	6	1
		ILLINOIS	CONTRACT NO. 76J95	

FOR INDEX OF SHEETS, SEE SHEET NO. 2

ADT

RAMP A @ I 64 & IL 4
2016 ADT = 3900 (ACTUAL)
2017 ADT = 4100 (ESTIMATED)
2037 ADT = 4500 (ESTIMATED)
SU = 2.6% MU = 5.1%

RAMP B @ I 64 & IL 4
2016 ADT = 1050 (ACTUAL)
2017 ADT = 1100 (ESTIMATED)
2037 ADT = 1200 (ESTIMATED)
SU = 4.8% MU = 19.0%

RAMP C @ I 64 & IL 4
2016 ADT = 4150 (ACTUAL)
2017 ADT = 4300 (ESTIMATED)
2037 ADT = 4800 (ESTIMATED)
SU = 2.4% MU = 4.2%

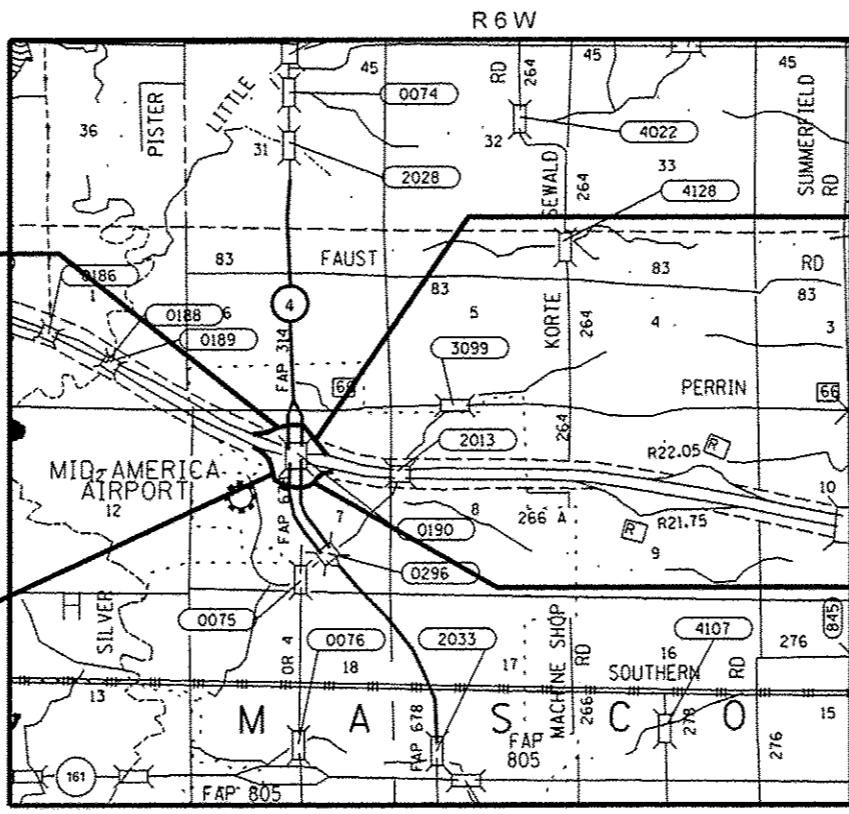
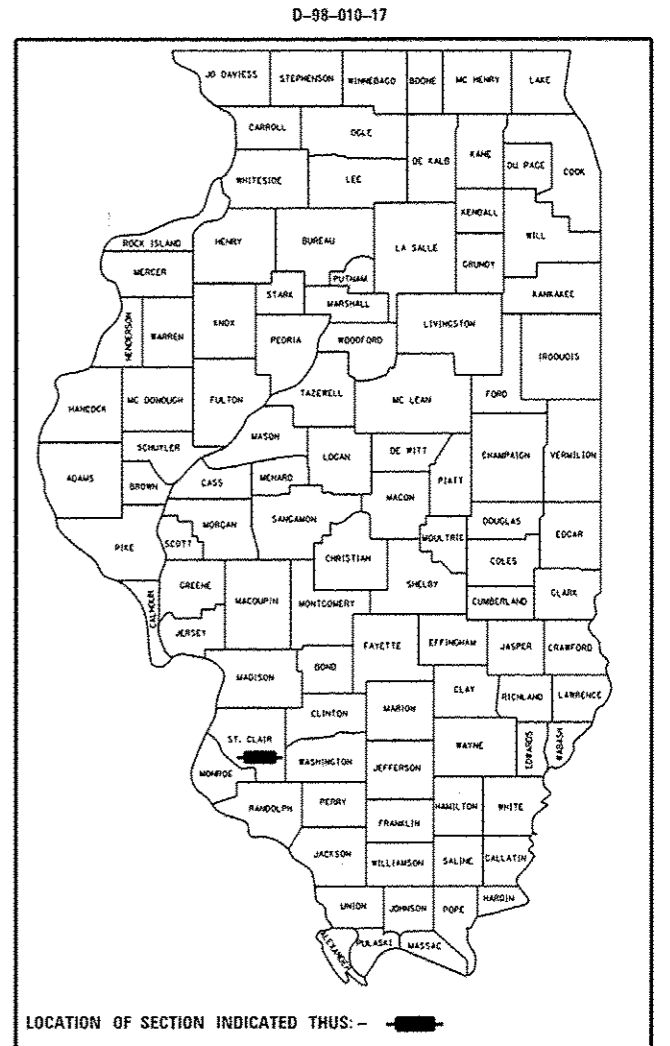
RAMP D @ I 64 & IL 4
2016 ADT = 1400 (ACTUAL)
2017 ADT = 1450 (ESTIMATED)
2037 ADT = 1600 (ESTIMATED)
SU = 6.4% MU = 23.2%

PROPOSED
HIGHWAY PLANS

FAI 64 (I-64)
SECTION 82-(8,9) PP-1

PATCHING-CM
ST. CLAIR COUNTY

C-98-005-17

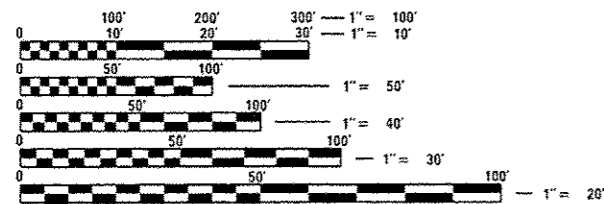


RAMP A @ I 64 & IL 4
38° 32' 11.46" N
89° 48' 32.37" W

RAMP B @ I 64 & IL 4
38° 33' 08.64" N
89° 43' 47.73" W

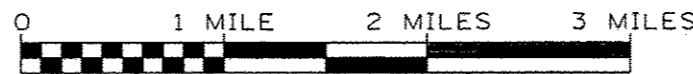
RAMP C @ I 64 & IL 4
38° 33' 02.08" N
89° 48' 32.80" W

RAMP D @ I 64 & IL 4
38° 33' 00.68" N
89° 48' 18.85" W



FULL SIZE PLANS HAVE BEEN PREPARED USING STANDARD ENGINEERING SCALES. REDUCED SIZED PLANS WILL NOT CONFORM TO STANDARD SCALES. IN MAKING MEASUREMENTS ON REDUCED PLANS, THE ABOVE SCALES MAY BE USED.

J.U.L.I.E.
JOINT UTILITY LOCATION INFORMATION FOR EXCAVATION
1-800-892-0123
OR 811



MASCOUTAH TOWNSHIP

GROSS LENGTH = 6072 FT. = 1.15 MILE
NET LENGTH = 6072 FT. = 1.15 MILE

PROJECT ENGINEER: TIM PADGETT 618-346-3325
PROJECT MANAGER: LEONARD CHILDS 618-346-3191

CONTRACT NO. 76J95

STATE OF ILLINOIS
DEPARTMENT OF TRANSPORTATION

SUBMITTED Feb 3 20 17

Jeffrey C. K...
REGIONAL ENGINEER

Maureen M. Addis, P.E.
ENGINEER OF DESIGN AND ENVIRONMENT

Maureen M. Addis
DIRECTOR OF PROGRAM DEVELOPMENT

PRINTED BY THE AUTHORITY
OF THE STATE OF ILLINOIS

100% STATE
URBAN

1105 P & 033

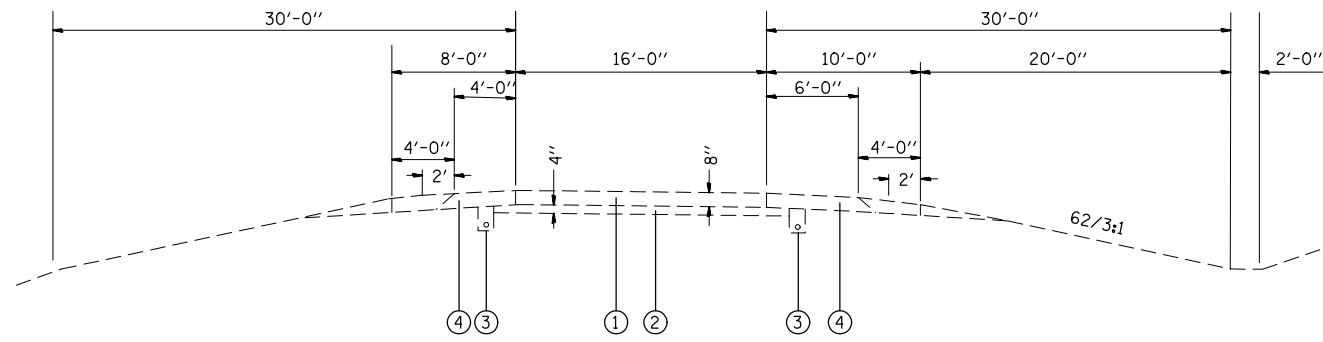
CODE NO.	ITEM	UNIT	TOTAL QUANTITY	CONSTR. CODE
				ROADWAY 0004 S. N.
44200050	WELDED WIRE REINFORCEMENT	50 YD	38	38
44200929	CLASS B PATCHES, TYPE I, 8 INCH	50 YD	88	88
44200934	CLASS B PATCHES, TYPE II, 8 INCH	50 YD	431	431
44200942	CLASS B PATCHES, TYPE III, 8 INCH	50 YD	38	38
44201299	DOWEL BARS 1 1/2"	EACH	1574	1574
44213200	SAW CUTS	FOOT	3157	3157
67100100	MOBILIZATION	LSUM	1	1
70100825	TRAFFIC CONTROL AND PROTECTION, STANDARD 701456	LSUM	1	1
X4406020	PARTIAL DEPTH REMOVAL, TYPE I, 2"	50 YD	134	134
X4406220	PARTIAL DEPTH REMOVAL, TYPE II, 2"	50 YD	134	134
X4421000	PARTIAL DEPTH PATCHING	TON	30	30

11

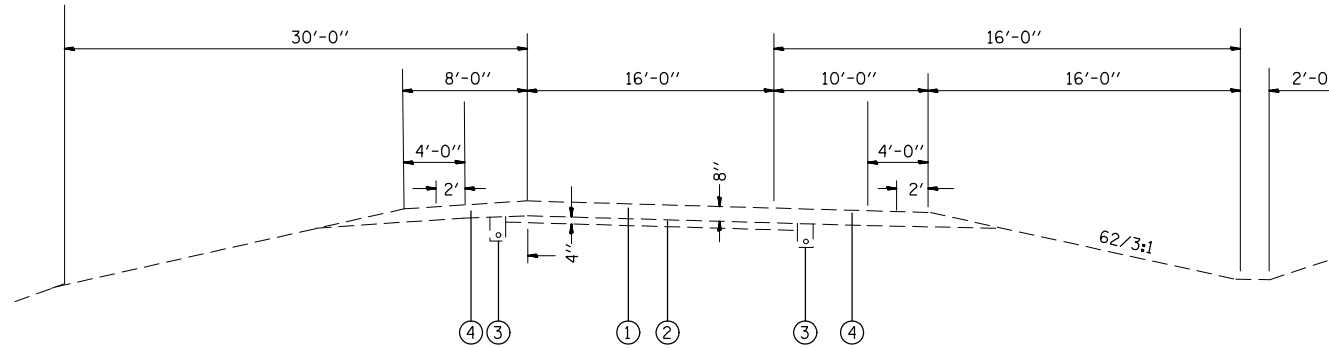
STATE OF ILLINOIS
DEPARTMENT OF TRANSPORTATION

SUMMARY OF QUANTITIES

FILE NAME =	USER NAME = ohids1	DESIGNED -	REVISED -	SCALE: SHEET OF SHEETS STA. TO STA.		F.A.T. RTE.	SECTION	COUNTY	TOTAL SHEETS	SHEET NO.	
p:\1105 P & 033\INTEG.illinois.gov\WIDOT\Documents\DOT Offices\District 8\Projects\0876\DRAWING\GAD\Sheets\0876\95-sht-500.dwg		CHECKED -	REVISED -			64	82-18,911P-1	ST. CLAIR	6	3	
#MODELNAME#	PLOT SCALE = 100.0000' / 1"	DATE -	REVISED -			CONTRACT NO. 76J95					
	PLOT DATE = 2/18/2017					ILLINOIS FED. AID PROJECT					



EXISTING TYPICAL - IL 4 RAMPS



EXISTING SUPERELEVATED TYPICAL - IL 4 RAMPS

LEGEND

- ① EXISTING PORTLAND CEMENT PAVEMENT 8"
- ② EXISTING STABILIZED SUBBASE 4"
- ③ EXISTING SUB SURFACE DRAINS
- ④ EXISTING STABILIZED SHOULDER

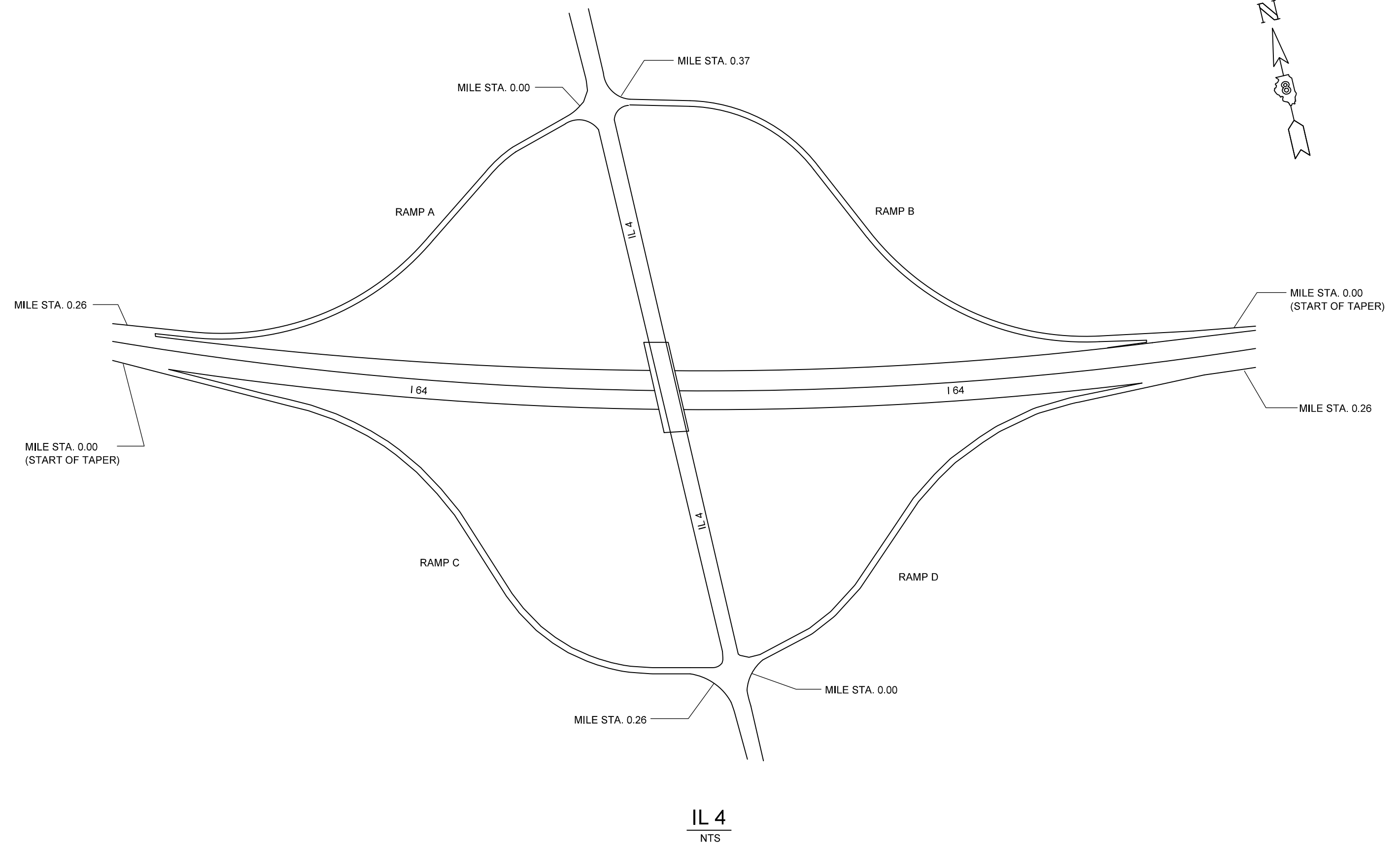
FILE NAME =	USER NAME = childsl	DESIGNED -	REVISED -	STATE OF ILLINOIS DEPARTMENT OF TRANSPORTATION	EXISTING TYPICALS				F.A.I. RTE.	SECTION	COUNTY	TOTAL SHEETS	SHEET NO.
pw:\IL\084EBIDINTEG.illinois.gov\PIWIDOT\Documents\IDOT Offices\District 8\Projects\0876\DRAWING\DATA\CADsheets\0876\95-sht-typical\0876-95-sht-typical.dwg		DRAWN -	REVISED -		64	82-(8,9) PP-1	ST. CLAIR	6	4				
#MODELNAME#	PLOT SCALE = 100.0000' / in.	CHECKED -	REVISED -		CONTRACT NO. 76J95								
	PLOT DATE = 2/14/2017	DATE -	REVISED -		SCALE:	SHEET	OF	SHEETS	STA.	TO	STA.	ILLINOIS FED. AID PROJECT	

CLASS B PAVEMENT PATCHING 8 INCH SCHEDULE - IL 4 RAMPS									
LOCATION MILE STATION	RAMP LEFT/RIGHT	LENGTH	WIDTH	CLASS B PATCH TYPE I	CLASS B PATCH TYPE II	CLASS B PATCH TYPE III	DOWEL BARS 1 1/2 INCH	WELDED WIRE REINFORCEMENT	SAWCUT
		(FT)	(FT)	(SQ YD)	(SQ YD)	(SQ YD)	(EACH)	(SQ YD)	(FT)
IL 4 WB ENTRANCE RAMP A									
0.05	LEFT	6.0	6.0	4.0			20		30.0
0.06	LEFT	6.0	10.0		6.7		20		42.0
0.06	RIGHT	6.0	6.0	4.0			20		30.0
0.1	LEFT	6.0	10.0		6.7		20		42.0
0.1	RIGHT	6.0	6.0	4.0			20		30.0
0.15	LEFT	6.0	10.0		6.7		20		42.0
0.15	RIGHT	6.0	6.0	4.0			20		30.0
IL 4 EB EXIT RAMP B									
0.1	LEFT	6.0	10.0		6.7		20		42.0
0.1	RIGHT	6.6	6.0	4.4			20		31.2
0.12	LEFT	10.0	10.0		11.1		20		50.0
0.12	RIGHT	10.0	6.0		6.7		20		38.0
0.2	LEFT	6.0	10.0		6.7		20		42.0
0.2	RIGHT	6.0	6.0	4.0			20		30.0
0.26	LEFT	6.0	10.0		6.7		20		42.0
0.26	RIGHT	6.0	6.0	4.0			20		30.0
0.28	LEFT	16.0	10.0			17.8	20	17.8	62.0
0.28	RIGHT	16.0	6.0		10.7		20		50.0
0.29	LEFT	6.0	10.0		6.7		20		42.0
0.29	RIGHT	6.0	6.0	4.0			20		30.0
0.3	LEFT	6.0	10.0		6.7		20		42.0
0.3	RIGHT	6.0	6.0	4.0			20		30.0
0.32	LEFT	6.0	10.0		6.7		20		42.0
0.32	RIGHT	8.0	6.0		5.3		20		34.0
0.36	LEFT	8.0	10.0		8.9		20		46.0
0.36	RIGHT	8.0	6.0		5.3		20		34.0
0.38	LEFT	6.0	10.0		6.7		20		42.0
0.38	RIGHT	10.0	12.0		13.3		20		56.0
0.39	LEFT	6.0	6.0	4.0			20		30.0
0.39	RIGHT	12.0	10.0		13.3		20		54.0
0.4	LEFT	12.0	6.0		8.0		20		42.0
IL 4 EB EXIT RAMP C									
0.1	LEFT	8.0	10.0		8.9		20		46.0
0.1	RIGHT	8.0	6.0		5.3		20		34.0
0.15	LEFT	6.0	10.0		6.7		20		42.0
0.15	RIGHT	6.0	6.0	4.0			20		30.0
0.17	RIGHT	8.0	6.0		5.3		20		34.0
0.2	LEFT	6.0	10.0		6.7		20		42.0
0.2	RIGHT	6.0	6.0	4.0			20		30.0
0.22	LEFT	6.0	10.0		6.7		20		42.0
0.22	RIGHT	6.0	6.0	4.0			20		30.0
0.25	LEFT	6.0	10.0		6.7		20		42.0
0.25	RIGHT	6.0	6.0	4.0			20		30.0
0.28	LEFT	6.0	10.0		6.7		20		42.0
0.28	RIGHT	6.0	6.0	4.0			20		30.0
0.3	LEFT	6.0	10.0		6.7		20		42.0
0.3	RIGHT	6.0	6.0	4.0			20		30.0
0.35	LEFT	8.0	10.0		8.9		20		46.0
0.35	RIGHT	8.0	6.0		5.3		20		34.0
0.38	LEFT	6.0	12.0		8.0		20		48.0
0.38	RIGHT	6.0	12.0		8.0		20		48.0
0.39	LEFT	6.0	16.0		10.7		28		60.0

CLASS B PAVEMENT PATCHING 8 INCH SCHEDULE - IL 4 RAMPS									
LOCATION MILE STATION	RAMP LEFT/RIGHT	LENGTH	WIDTH	CLASS B PATCH TYPE I	CLASS B PATCH TYPE II	CLASS B PATCH TYPE III	DOWEL BARS 1 1/2 INCH	WELDED WIRE REINFORCEMENT	SAWCUT
		(FT)	(FT)	(SQ YD)	(SQ YD)	(SQ YD)	(EACH)	(SQ YD)	(FT)
IL 4 EB ENTRANCE RAMP D									
0.03	LEFT	6.0	10.0		6.7		20		42.0
0.03	RIGHT	6.0	6.0	4.0			20		30.0
0.05	LEFT	6.0	10.0		6.7		20		42.0
0.05	RIGHT	6.0	6.0	4.0			20		30.0
0.07	RIGHT	10.0	10.0		11.1		20		50.0
0.07	LEFT	10.0	6.0		6.7		20		38.0
0.08	RIGHT	10.0	10.0		11.1		20		50.0
0.08	LEFT	10.0	6.0		6.7		20		38.0
0.09	RIGHT	14.0	10.0			15.6	20	15.6	58.0
0.09	LEFT	14.0	6.0		9.3		20		46.0
0.1	RIGHT	12.0	10.0		13.3		20		54.0
0.1	LEFT	12.0	10.0		13.3		20		54.0
0.12	RIGHT	10.0	10.0		9.3		20		50.0
0.12	RIGHT	10.0	10.0		11.1		20		50.0
0.015	LEFT	6.0	10.0		6.7		20		42.0
0.15	RIGHT	6.0	6.0	4.0			20		30.0
0.17	LEFT	6.0	10.0		6.7		20		42.0
0.17	RIGHT	6.0	6.0		6.7		20		30.0
	SUBTOTAL:			76.4	375.1	33.3	1368	33.3	2551.2
ANTICIPATED	FAILURES (15%):			11.5	56.3	5.0	206	5.0	382.7
	TOTAL:			88	431	38	1574	38	3157

PARTIAL DEPTH PATCHING SCHEDULE			
LOCATION (SEE NOTE)	PARTIAL DEPTH REMOVAL 2"		PARTIAL DEPTH PATCHING
	TYPE I	TYPE II	
	SQ YARDS	SQ YARDS	TONS
IL 4			
RAMP A	33.3	33.3	7.46
RAMP B	33.3	33.3	7.46
RAMP C	33.3	33.3	7.46
RAMP D	33.3	33.3	7.46
TOTAL	133.2	133.2	29.84

NOTE: THE LOCATION OF ALL PARTIAL DEPTH REMOVAL/PATCHING SHALL BE DETERMINED BY THE ENGINEER.



FILE NAME =	USER NAME = childsl	DESIGNED -	REVISED -	STATE OF ILLINOIS DEPARTMENT OF TRANSPORTATION	PLANS RAMPS AT IL 4			F.A.I. RTE.	SECTION	COUNTY	TOTAL SHEETS	SHEET NO.
pw:\IL084EBIDINTEG.illinois.gov\PWIDOT\Documents\DOT Offices\District 8\Projects\0876-DRAWING\DATA\CADsheets\0876J95-sht-plans.dwg		CHECKED -	REVISED -		64	82-(8,9)PP-1	ST. CLAIR	6	6			
#MODELNAME#	PLOT SCALE = 100.0000' / in.	DATE -	REVISED -		CONTRACT NO. 76J95			ILLINOIS FED. AID PROJECT				
	PLOT DATE = 2/3/2017				SCALE:	SHEET 1	OF 2	SHEETS	STA.	TO STA.		