

STATE OF ILLINOIS  
DEPARTMENT OF TRANSPORTATION  
DIVISION OF HIGHWAYS

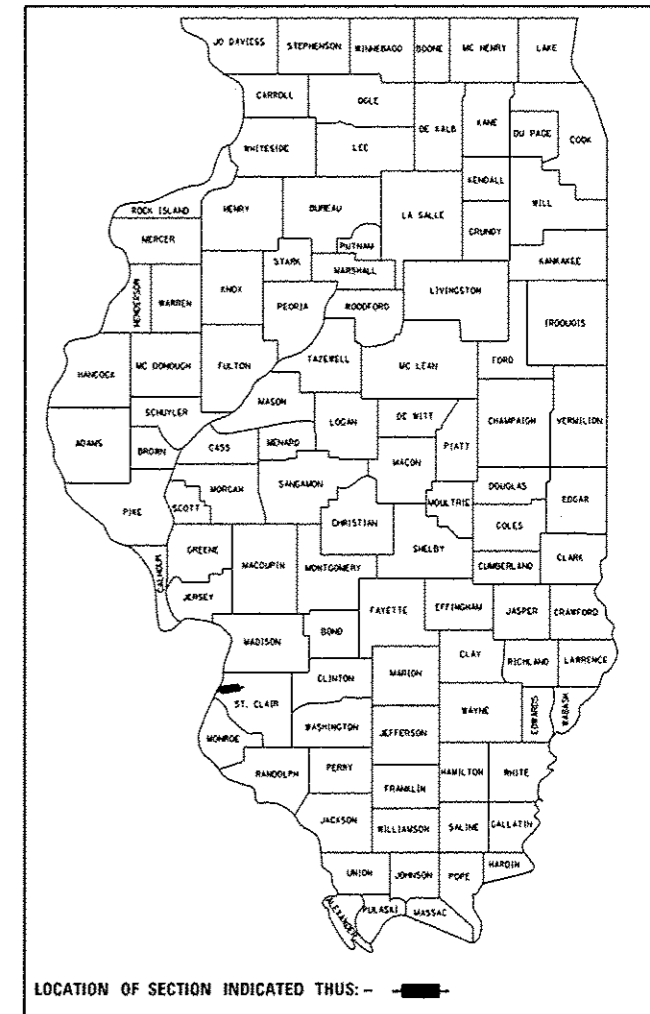
**PROPOSED  
HIGHWAY PLANS**

FAI ROUTE 70 (I-55 / I-70)  
SECTION 82-5VB-R-3

**I-55 / 70 OVER B&O BRIDGE REPAIR  
ST. CLAIR COUNTY  
C-98-023-17**

F.A.I. RTE.	SECTION	COUNTY	TOTAL SHEETS	SHEET NO.
70	82-5VB-R-3	ST. CLAIR	20	1
		ILLINOIS	CONTRACT NO. 76K16	

D-98-034-17



LOCATION OF SECTION INDICATED THUS: - [shaded box] -

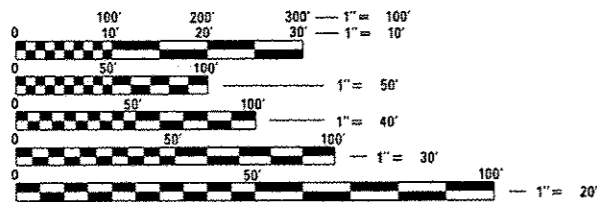
FUNCTIONAL CLASSIFICATION: INTERSTATE  
2016 ADT: 70,200  
2016 ADTT: 8,900  
MU%: 9.3%  
SU%: 3.3%

**INDEX OF SHEETS**

1. COVER SHEET
2. GENERAL NOTES
3. SUMMARY OF QUANTITIES
- 4-18. INTERSTATE WEEKEND CLOSURE, SPECIAL
- 19-20. BRIDGE PLANS

**HIGHWAY STANDARDS**

- |           |   |
|-----------|---|
| 000001-06 | STANDARD SYMBOLS, ABBREVIATIONS, AND PATTERNS                 |
| 701101-05 | OFF-ROAD OPERATIONS, MULTILANE, 15' TO 24" FROM PAVEMENT EDGE |
| 701400-09 | APPROACH TO LANE CLOSURE, FREEWAY / EXPRESSWAY                |
| 701401-10 | LANE CLOSURE, FREEWAY / EXPRESSWAY                            |
| 701428-01 | TRAFFIC CONTROL SETUP AND REMOVAL FREEWAY / EXPRESSWAY        |
| 701446-08 | TWO LANE CLOSURE, FREEWAY / EXPRESSWAY                        |
| 701451-04 | RAMP CLOSURE, FREEWAY / EXPRESSWAY                            |
| 701901-06 | TRAFFIC CONTROL DEVICES                                       |
| 720001-01 | SIGN PANEL MOUNT DETAILS                                      |
| 720006-04 | SIGN PANEL ERECTION DETAILS                                   |



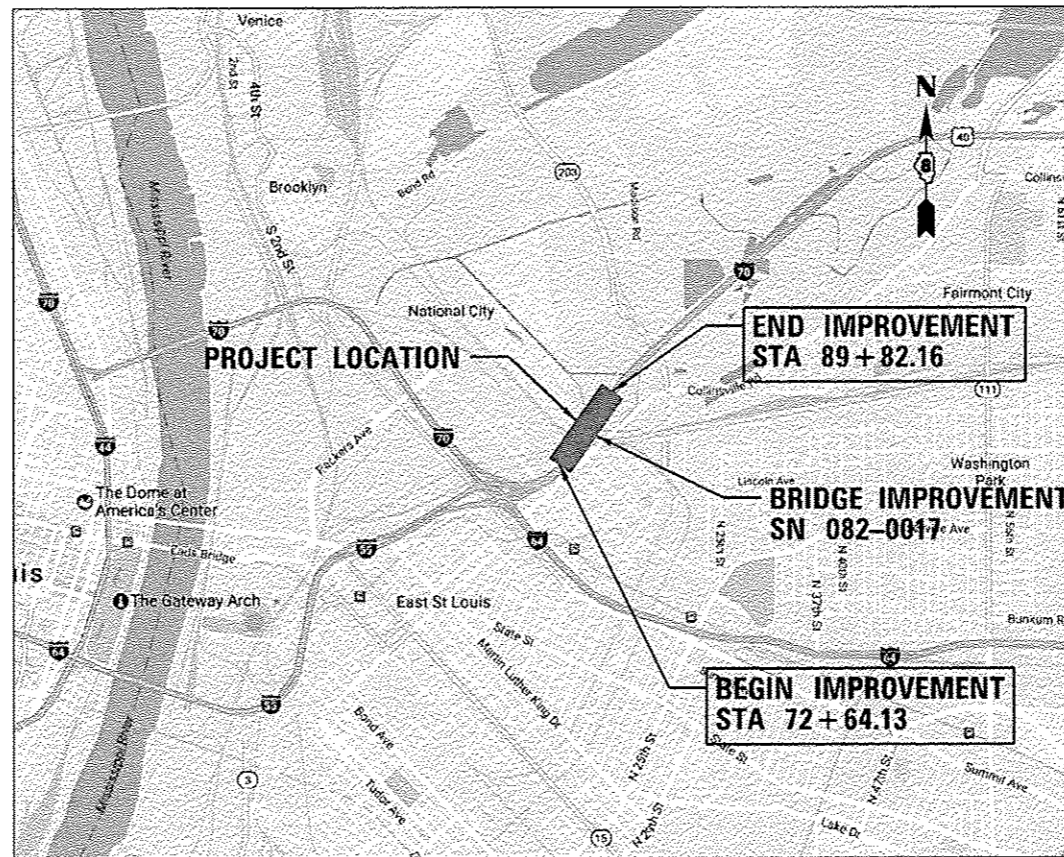
FULL SIZE PLANS HAVE BEEN PREPARED USING STANDARD ENGINEERING SCALES. REDUCED SIZED PLANS WILL NOT CONFORM TO STANDARD SCALES. IN MAKING MEASUREMENTS ON REDUCED PLANS, THE ABOVE SCALES MAY BE USED.

J.U.L.I.E.  
JOINT UTILITY LOCATION INFORMATION FOR EXCAVATION  
1-800-892-0123  
OR 811

PROJECT ENGINEER: TIMOTHY PADGETT (618) 346-3325  
PROJECT MANAGER: DON HAYDEN (618) 346-3181

CONTRACT NO. 76K16

**Farnsworth GROUP**  
2211 W. BRADLEY AVENUE  
CHAMPAIGN, ILLINOIS 61821  
(217) 352-47408 / (217) 352-7409 Fax  
www.f-w.com



LOCATION MAP  
SCALE: NOT TO SCALE

GROSS LENGTH = 1,718.03 FT. = 0.325 MILE  
NET LENGTH = 1,718.03 FT. = 0.325 MILE

JASON L. FRERICKS, P.E.  
LICENSED PROFESSIONAL ENGINEER  
ILLINOIS NO. 062-059118 EXPIRES 1/07/2017

STATE OF ILLINOIS  
DEPARTMENT OF TRANSPORTATION  
DIVISION OF HIGHWAYS

SUBMITTED Feb 1 2017  
Jeffrey Z. Kan REGIONAL ENGINEER  
Mar 24 2017  
Maurice M. Addis ENGINEER OF DESIGN AND ENVIRONMENT  
Mar 24 2017  
Travis DIRECTOR OF PROGRAM DEVELOPMENT

**PRINTED BY THE AUTHORITY  
OF THE STATE OF ILLINOIS**

**GENERAL NOTES:**

**COMMITMENTS**

NONE

1. ALL CONSTRUCTION SHALL BE DONE IN ACCORDANCE WITH THE ILLINOIS DEPARTMENT OF TRANSPORTATION "STANDARD SPECIFICATIONS FOR ROAD AND BRIDGE CONSTRUCTION", ADOPTED APRIL 1, 2016, THESE PLANS AND THE SPECIAL PROVISIONS INCLUDED IN THE CONTRACT DOCUMENTS.
2. THE ENGINEER SHALL NOT BE RESPONSIBLE FOR THE MEANS, METHODS, PROCEDURES, TECHNIQUES OR SEQUENCES OF CONSTRUCTION, NOR SAFETY ON THE JOB SITE, NOR SHALL THE ENGINEER BE RESPONSIBLE FOR THE CONTRACTOR'S FAILURE TO CARRY OUT THE WORK IN ACCORDANCE WITH THE CONTRACT DOCUMENTS. NEITHER THE PROFESSIONAL ACTIVITIES OF THE ENGINEER NOR THE PRESENCE OF THE ENGINEER AT A CONSTRUCTION SITE SHALL RELIEVE THE CONTRACTOR OF THEIR OBLIGATIONS, DUTIES AND RESPONSIBILITIES, INCLUDING ANY HEALTH AND SAFETY PRECAUTIONS REQUIRED BY ANY REGULATORY AGENCIES.
3. CONTRACTOR SHALL VERIFY LOCATION OF ALL EXISTING UTILITIES BEFORE BEGINNING CONSTRUCTION. THE CONTRACTOR SHALL BE RESPONSIBLE FOR PROTECTING ALL UTILITIES AND SHALL BE LIABLE FOR ANY DAMAGE TO THEM RESULTING FROM HIS OPERATIONS.
4. ILLINOIS STATE LAW REQUIRES A 48-HOUR NOTICE BE GIVEN TO ALL UTILITIES BEFORE DIGGING. FIELD MARKING OF FACILITIES MAY BE OBTAINED BY CONTACTING J.U.L.I.E. OR FOR NON-MEMBERS, THE UTILITY COMPANY DIRECTLY. AGENCIES KNOWN TO HAVE FACILITIES WITHIN THE PROJECT AREA ARE AS FOLLOWS:

- AMEREN ILLINOIS (GAS AND ELECTRIC)
- AT&T ILLINOIS (COMMUNICATIONS)
- CENTURYLINK, INC. (COMMUNICATIONS)
- CITY OF EAST ST. LOUIS (LIGHITNG)
- MEDIACOM LLC CENTRAL (CABLE TV)
- PEG BANDWIDTH IL, LLC (COMMUNICATIONS)

MEMBERS OF J.U.L.I.E. (800)-892-0123 OR 811 ARE INDICATED BY •. NON J.U.L.I.E. MEMBERS MUST BE NOTIFIED INDIVIDUALLY.

5. ANY STANDARDS REFERENCED THROUGHOUT THE PLANS SHALL BE INTERPRETED TO BE THE LATEST HIGHWAY STANDARDS OF THE ILLINOIS DEPARTMENT OF TRANSPORTATION AS SHOWN ON THE SCHEDULE OF HIGHWAY STANDARDS SHEET.
6. THE CONTRACTOR SHALL DISPOSE OF ALL REMOVAL ITEMS OFF OF THE RIGHT-OF-WAY.
7. THE ILLINOIS DEPARTMENT OF TRANSPORTATION STRONGLY ENCOURAGES THE PRIME CONTRACTOR AND THEIR APPROVED SUB-CONTRACTORS TO HIRE MINORITY, WOMEN AND DISADVANTAGED INDIVIDUALS FROM ITS FEDERALLY FUNDED HIGHWAY CONSTRUCTION CAREERS TRAINING PROGRAM (HCCTP) TO HELP MEET WORKFORCE AND TRAINEE GOALS. THIS PROGRAM IS TRAINING MINORITIES, WOMEN AND DISADVANTAGED INDIVIDUALS IN HIGHWAY CONSTRUCTION-RELATED SKILLS, E.G., MATH FOR THE TRADES, JOB READINESS, TECHNICAL SKILLS COURSEWORK (CARPENTRY, CONCRETE FLATWORK, BLUEPRINT READING, SITE PLANS, SITE WORK, TOOLS USE, ETC.) AND OSHA 10 HOUR CERTIFICATION, TO PREPARE THEM FOR A CAREER IN THE HIGHWAY CONSTRUCTION TRADES. GRADUATES ARE WELL-TRAINED AND READY TO BECOME PRODUCTIVE ENTRY-LEVEL CONSTRUCTION WORKERS. PLEASE CONTACT THE DISTRICT 8 EEO OFFICE AT 618-346-3360 AND/OR THE HCCTP COORDINATOR AT 618/874-6528 TO LEARN MORE ABOUT THE PROGRAM AND FOR ASSISTANCE IN MEETING WORKFORCE AND TRAINEE GOALS.
8. ALL REQUIRED TRAFFIC CONTROL SHALL BE CONDUCTED ACCORDING TO ALL CURRENT APPLICABLE IDOT POLICIES AND STANDARDS AND THE LATEST EDITION OF THE MANUAL ON UNIFORM TRAFFIC CONTROL DEVICES (MUTCD) IN EFFECT ON THE DATE OF THE INVITATION FOR BIDS.
9. THE CONTRACTOR SHALL NOTIFY THE ENGINEER THREE WEEKS IN ADVANCE OF EACH INTERSTATE WEEKEND DIRECTIONAL CLOSURE. THE CONTRACTOR IS REQUIRED TO ALSO NOTIFY THE RESIDENT ENGINEER 72 HOURS IN ADVANCE OF THE PLACEMENT OF ANY TRAFFIC CONTROL DEVICES.

10. ALL CONSTRUCTION SIGNS SHALL HAVE A BLACK LEGEND/BORDER ON A FLUORESCENT ORANGE REFLECTORIZED BACKGROUND. ALL MATERIAL AND LABOR RELATED TO SIGN INSTALLATION AND REMOVAL SHALL BE INCLUDED IN THE COST OF THE CONTRACT, NO ADDITIONAL COMPENSATION WILL BE PROVIDED. THE EXACT LOCATION OF ALL ADVANCE WARNING SIGNS SHALL BE APPROVED BY THE RESIDENT ENGINEER PRIOR TO PLACEMENT.
11. ALL TEMPORARY TRAFFIC CONTROL SIGNS SHALL BE POST-MOUNTED UNLESS THE SIGNS ARE LOCATED ON THE PAVEMENT. IT SHALL BE THE CONTRACTOR'S RESPONSIBILITY TO ENSURE THAT ALL MOUNTED SIGNS MEET NCHRP 350, TEST LEVEL 3 GUIDELINES AND THAT ANY SUPPORT BASES ON ANY PAVEMENT MOUNTED SIGNS ARE PROPERLY WEIGHTED FOR THE EXISTING AND ANTICIPATED WIND CONDITIONS. IDOT SHALL BE HELD HARMLESS FOR NEGLIGENCE OF THE CONTRACTOR TO ADHERE TO THIS DIRECTIVE.
12. CHANGEABLE MESSAGE SIGNS SHALL BE PLACED TWO WEEKS PRIOR TO EACH INTERSTATE WEEKEND CLOSURES. ALL MESSAGES, INCLUDING DYNAMIC MESSAGE SIGNS, SHALL BE APPROVED BY THE RESIDENT ENGINEER AND COORDINATED WITH THE TRAFFIC MANAGEMENT CENTER (618-346-3279).
13. THE CONTRACTOR SHOULD NOTE THAT ADJACENT PROJECTS WILL BE CONSTRUCTED CONCURRENTLY WITH THIS PROJECT; WHICH MAY CONFLICT WITH THE SUGGESTED MAINTENANCE OF TRAFFIC PRESENTED IN THESE PLANS. THE CONTRACTOR SHALL COORDINATE THROUGH THE RESIDENT ENGINEER THREE WEEKS IN ADVANCE OF ANY LANE CLOSURES. PLEASE CONTACT BOTH THE IDOT DISTRICT 8 CONSTRUCTION ENGINEER AT (618) 346-3345 AND THE IDOT DISTRICT 8 TRAFFIC CONTROL TECHNICIAN AT (618) 346-3287.
14. THE CONTRACTOR SHALL VERIFY ALL DIMENSIONS AND CONDITIONS IN THE FIELD PRIOR TO CONSTRUCTION AND ORDERING OF MATERIALS.

**MIXTURE REQUIREMENTS**

ROUTE	FAI 70 (I-55 / I-70)
SECTION	82-5VB-R-3
COUNTY	ST. CLAIR
CONTRACT	76K16

DESCRIPTION:	JOINT REPLACEMENTS ON I-55 / I-70 BRIDGE OVER B&O, CONRAIL & TRRA RR IN E. ST. LOUIS - SN 082-0017
--------------	--

ADT (CONSTRUCTION YR):	36200
MU %	9.6
SU %	3.5
20 YR. ESAL'S	22.35

MIXTURE USE	BRIDGE APPROACH		
AC/PG	SBS PG76-22		
RAP % (MAX)	SEE SPECIAL PROVISION		
DESIGN AIR VOIDS	4.0% @ NDES = 90		
MIX COMPOSITION (GRADATION)	IL 9.5		
FRICITION AGG	MIXTURE "E"		
QUALITY MGMT PROGRAM	QC/OA		

MIXTURE USE	SHOULDERS > 2.25"	SHOULDERS < 2.25"	
AC/PG	PG 64-22	PG 64-22	
RAP % (MAX)	SEE SPECIAL PROVISION	SEE SPECIAL PROVISION	
DESIGN AIR VOIDS	4.0% @ NDES = 30	4.0% @ NDES = 30	
MIX COMPOSITION (GRADATION)	IL 19.0L	IL 9.5L	
FRICITION AGG			
QUALITY MGMT PROGRAM	QC/OA	QC/OA	



USER NAME = *USER*	DESIGNED - KRS	REVISED -
	DRAWN - SRL	REVISED -
PLOT SCALE = *SCALE*	CHECKED - JLF	REVISED -
PLOT DATE = *DATE*	DATE - 1/27/2017	REVISED -

**STATE OF ILLINOIS  
DEPARTMENT OF TRANSPORTATION**

**GENERAL NOTES**

SCALE: NTS SHEET 1 OF 1 SHEETS STA. TO STA.

F.A.I. RTE.	SECTION	COUNTY	TOTAL SHEETS	SHEET NO.
70	82-5VB-R-3	ST. CLAIR	20	2
CONTRACT NO. 76K16				
ILLINOIS FED. AID PROJECT				

SUMMARY OF QUANTITIES					CONSTRUCTION CODE
PAY ITEM NO.		DESCRIPTION	UNIT	TOTAL QUANTITY	✓0014
67100100		MOBILIZATION	LSUM	1	1
70200100		NIGHTTIME WORK ZONE LIGHTING	LSUM	1	1
X0326808	X	INTERSTATE WEEKEND CLOSURE, SPECIAL	LSUM	1	1
X4406620	X	PARTIAL DEPTH REMOVAL, TYPE IV, 2"	SQ YD	871	871
X4421000	X	PARTIAL DEPTH PATCHING	TON	98	98
Z0016200	X	DECK SLAB REPAIR (PARTIAL)	SQ YD	21	21
Z0021906	X	SILICONE JOINT SEALER, 1.5"	FOOT	115	115
Z0021908	X	SILICONE JOINT SEALER, 2"	FOOT	497	497
Z0021912	X	SILICONE JOINT SEALER, 2.5"	FOOT	422	422
Z0021916	X	SILICONE JOINT SEALER, 3"	FOOT	271	271
Z0041895	X	POLYMER CONCRETE	CU FT	163	163

1/30/2017

X DENOTES SPECIAL PROVISION

12



USER NAME: kwinford	DESIGNED: KRS	REVISED: -
DRAWN: SRL	REVISIONS: -	
CHECKED: J.F.	REVISIONS: -	
DATE: 1/27/2017	REVISIONS: -	

**STATE OF ILLINOIS**  
**DEPARTMENT OF TRANSPORTATION**

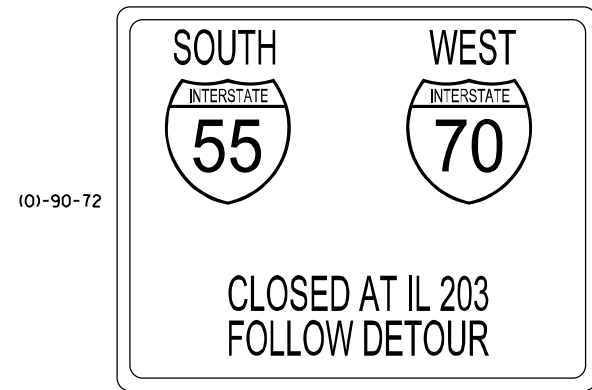
SUMMARY OF QUANTITIES	
SCALE: NTS	SHEET 1 OF 1 SHEETS STA. TO STA.

F.A.I. RTG. TO	SECTION: 82-SVB-R-3	COUNTY: ST. CLAIR	TOTAL SHEETS: 20	SHEET NO.: 3
CONTRACT NO. 76K16			ILLINOIS FED. AID PROJECT	

						DETOUR	NORTH	EAST	SOUTH	WEST		
SHEET # OF 15	M6-1-(O)-21-15	M6-1-(O)-21-15	M6-2-(O)-21-15	M6-2-(O)-21-15	M6-3-(O)-21-15	M4-8-(O)-30-15	M3-1-(O)-24-12	M3-2-(O)-24-12	M3-3-(O)-24-12	M3-4-(O)-24-12	M1-1-24-24	M1-1-24-24
	ARROW LT	ARROW RT	ARROW DIAGONAL RT	ARROW DIAGONAL LT	ARROW UP	DETOUR	NORTH	EAST	SOUTH	WEST	I-55	I-70
4	3	2			3	8	8	8			8	8
5			4			4	4	4			4	4
6			4		4	8	8	8			8	8
7			2			2	2	2			2	2
8			4	2	2	8			8	8	8	8
9	1	1			1	3			3	3	3	3
10			2			2			2	2	2	2
11												
12	2	2			2	6			6	6	6	6
13			2	2		4			4	4	4	4
<b>TOTAL</b>	<b>6</b>	<b>5</b>	<b>18</b>	<b>4</b>	<b>12</b>	<b>45</b>	<b>22</b>	<b>22</b>	<b>23</b>	<b>23</b>	<b>45</b>	<b>45</b>

SHEET # OF 15	(O)-90-72	(O)-90-72	(O)-90-72	W20-2-(O)-48-48	M4-8A-(O)-24-18	E5-3-(O)-48-36	E5-2A-(O)-48-36
	S55 W70 CLOSED	N55 E70 CLOSED	N55 E70 CLOSED 5 MILES	DETOUR AHEAD	END DETOUR	EXIT ONLY	EXIT CLOSED
4		5		5			
5		4		4		3	2
6		2	2	2			
7					1		
8	5			5			
9	3			2			
10							
11					2		
12	4			4			
13	5			3		4	1
<b>TOTAL</b>	<b>16</b>	<b>11</b>	<b>2</b>	<b>24</b>	<b>3</b>	<b>7</b>	<b>3</b>

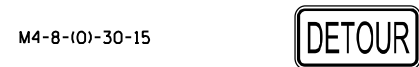
**NOTE:**  
ALL SIGNS SHALL BE PROVIDED  
INSTALLED, AND REMOVED  
BY THE CONTRACTOR.



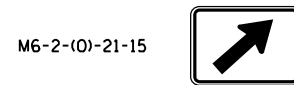
(A)



(B)



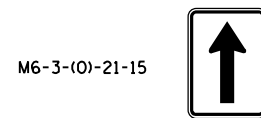
(C)



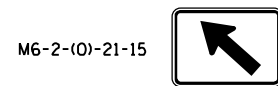
(D)



(E)



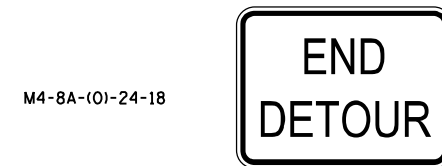
(F)



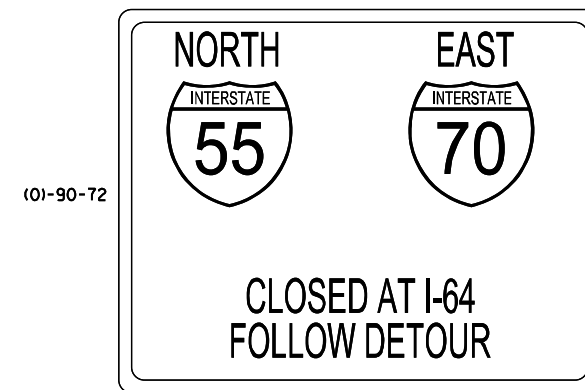
(G)



(H)



(I)



(J)



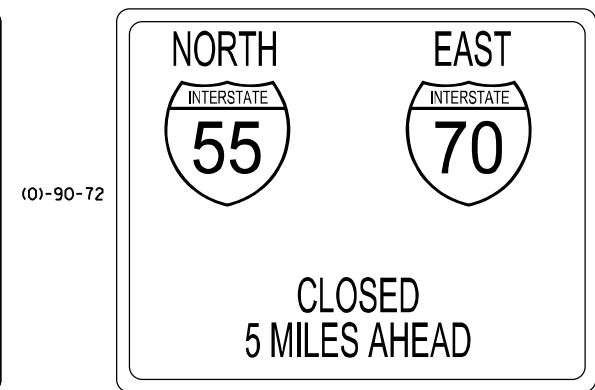
(K)



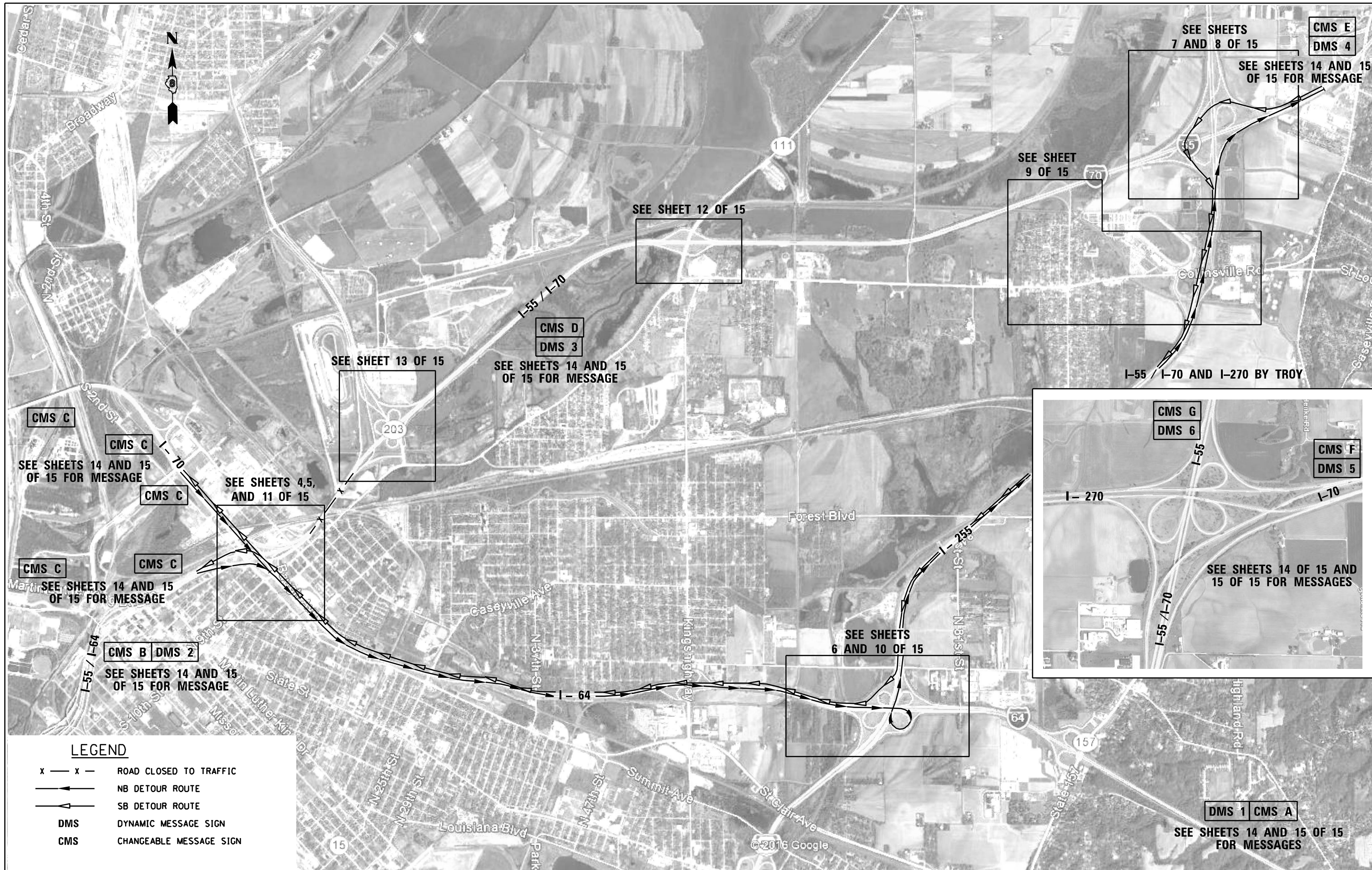
(L)



(M)



(O)



- LEGEND**
- x — x — ROAD CLOSED TO TRAFFIC
  - > NB DETOUR ROUTE
  - < SB DETOUR ROUTE
  - DMS DYNAMIC MESSAGE SIGN
  - CMS CHANGEABLE MESSAGE SIGN

**Farnsworth GROUP, INC.**  
 2211 West Bradley Avenue  
 Champaign, Illinois 61821  
 217/352-7408, 217/352-7406 fax

USER NAME = \*USER\*  
 DESIGNED - KRS  
 DRAWN - SRL  
 CHECKED - JLF  
 DATE - 1/27/2017

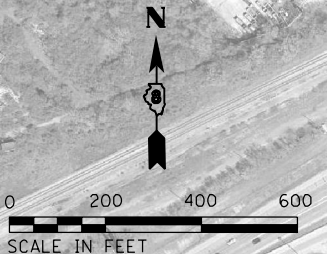
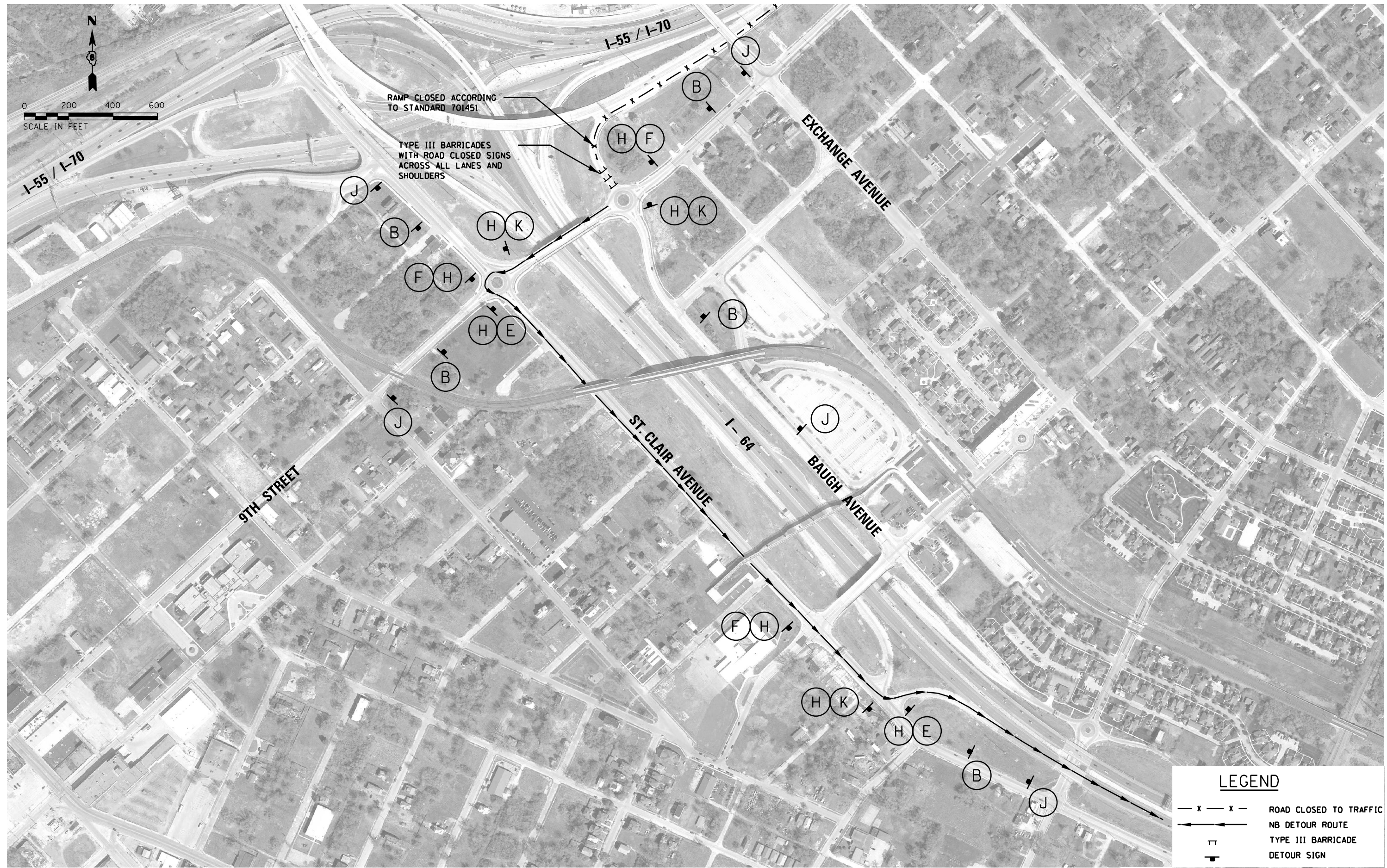
REVISÉ -  
 REVISÉ -  
 REVISÉ -  
 REVISÉ -

**STATE OF ILLINOIS  
 DEPARTMENT OF TRANSPORTATION**

**INTERSTATE WEEKEND CLOSURE, SPECIAL  
 DETOUR OVERVIEW**

SCALE: NTS SHEET 3 OF 15 SHEETS STA. TO STA.

F.A.I. RTE.	SECTION	COUNTY	TOTAL SHEETS	SHEET NO.
70	82-5VB-R-3	ST. CLAIR	20	6
CONTRACT NO. 76K16				
ILLINOIS FED. AID PROJECT				



LEGEND				
- x - x -	ROAD CLOSED TO TRAFFIC			
←	NB DETOUR ROUTE			
TT	TYPE III BARRICADE			
⬇	DETOUR SIGN			

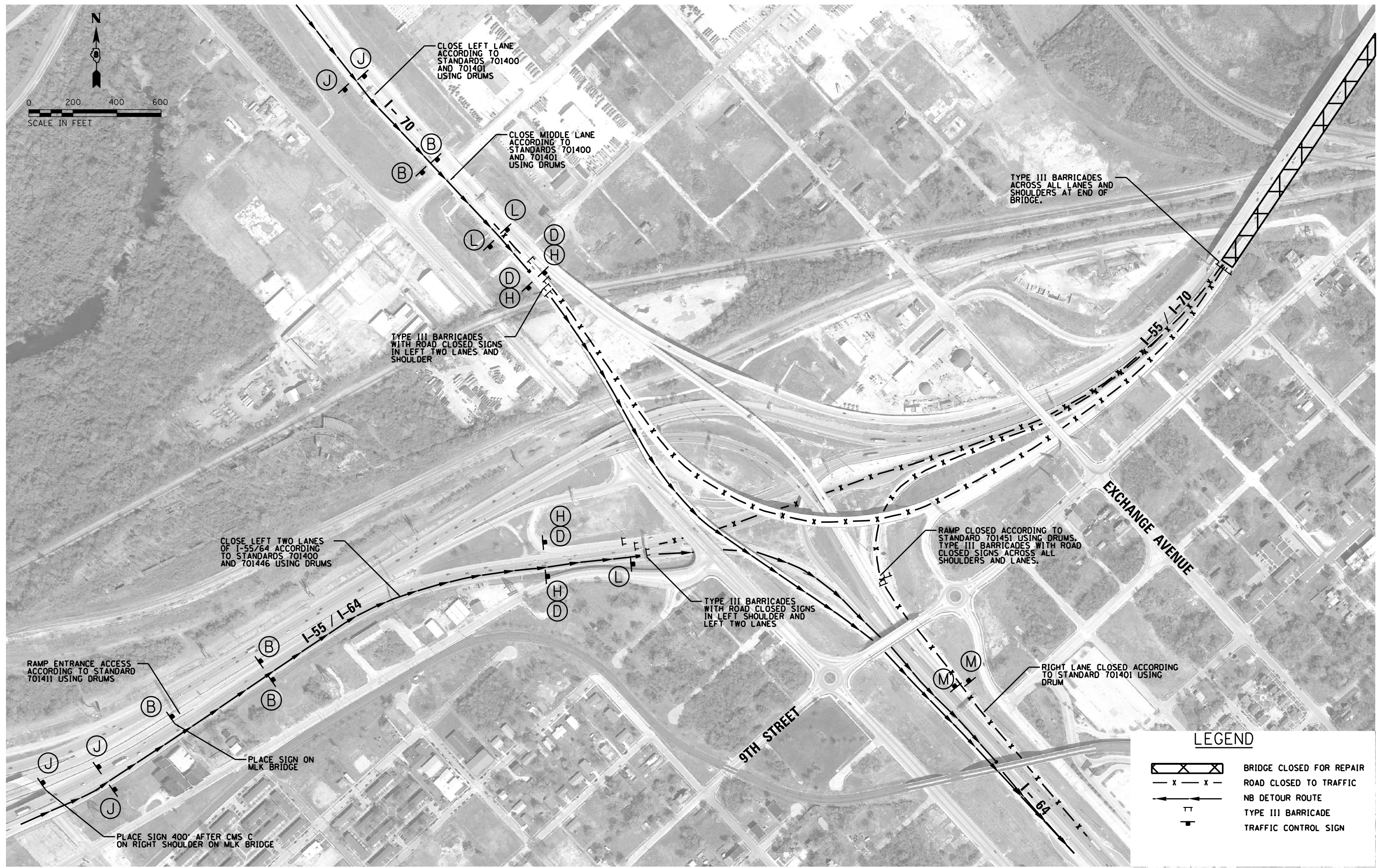
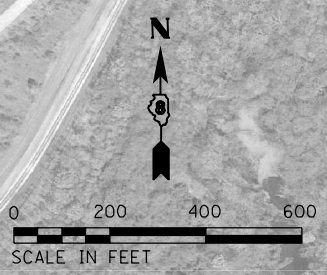
**Farnsworth**  
GROUP, INC.  
2211 West Bradley Avenue  
Champaign, Illinois 61821  
217/352-7408, 217/352-7406 fax

USER NAME = *USER*	DESIGNED - KRS	REVISED -
PLOT SCALE = *SCALE*	DRAWN - SRL	REVISED -
PLOT DATE = *DATE*	CHECKED - JLF	REVISED -
	DATE - 1/27/2017	REVISED -

**STATE OF ILLINOIS**  
**DEPARTMENT OF TRANSPORTATION**

**INTERSTATE WEEKEND CLOSURE, SPECIAL**  
**EXCHANGE AVENUE AND INTERSTATE 55/70 - NORTHBOUND DETOUR**  
SCALE: 1"=200' SHEET 4 OF 15 SHEETS STA. TO STA.

F.A.I. RTE.	SECTION	COUNTY	TOTAL SHEETS	SHEET NO.
70	82-5VB-R-3	ST. CLAIR	20	7
CONTRACT NO. 76K16				
ILLINOIS FED. AID PROJECT				



**LEGEND**

	BRIDGE CLOSED FOR REPAIR
	ROAD CLOSED TO TRAFFIC
	NB DETOUR ROUTE
	TYPE III BARRICADE
	TRAFFIC CONTROL SIGN

**Farnsworth GROUP INC.**  
2211 West Bradley Avenue  
Champaign, Illinois 61821  
217/352-7408, 217/352-7406 fax

USER NAME = *USER*	DESIGNED - KRS	REVISED -
PLOT SCALE = *SCALE*	DRAWN - SRL	REVISED -
PLOT DATE = *DATE*	CHECKED - JLF	REVISED -
	DATE - 1/27/2017	REVISED -

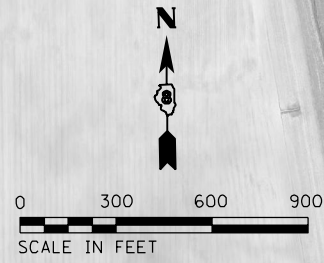
**STATE OF ILLINOIS  
DEPARTMENT OF TRANSPORTATION**

**INTERSTATE WEEKEND CLOSURE, SPECIAL  
INTERSTATE 55/70 AND INTERSTATE 64 - NORTHBOUND DETOUR**

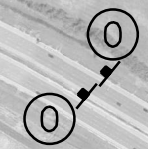
SCALE: 1"=200' SHEET 5 OF 15 SHEETS STA. TO STA.

F.A.I. RTE.	SECTION	COUNTY	TOTAL SHEETS	SHEET NO.
70	82-5VB-R-3	ST. CLAIR	20	8
CONTRACT NO. 76K16				
ILLINOIS FED. AID PROJECT				





**CMS H**  
SEE SHEET 14 OF 15  
FOR MESSAGE



**LEGEND**

NB DETOUR ROUTE  
 DETOUR SIGN

**Farnsworth**  
GROUP, INC.  
2211 West Bradley Avenue  
Champaign, Illinois 61821  
217/352-7408, 217/352-7406 fax

USER NAME = *USER*	DESIGNED - KRS	REVISED -
DRAWN - SRL	REVISOR -	
PLOT SCALE = *SCALE*	CHECKED - JLF	REVISED -
PLOT DATE = *DATE*	DATE - 1/27/2017	REVISED -

**STATE OF ILLINOIS  
DEPARTMENT OF TRANSPORTATION**

**INTERSTATE WEEKEND CLOSURE, SPECIAL  
INTERSTATE 64 AND INTERSTATE 255 - NORTHBOUND DETOUR**

SCALE: 1"=300'    SHEET 6 OF 15 SHEETS    STA. TO STA.

F.A.I. RTE.	SECTION	COUNTY	TOTAL SHEETS	SHEET NO.
70	82-5VB-R-3	ST. CLAIR	20	9
				CONTRACT NO. 76K16
ILLINOIS FED. AID PROJECT				



**LEGEND**

- NB DETOUR ROUTE
- ⊥ DETOUR SIGN

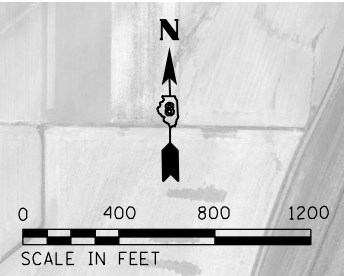
**Farnsworth**  
GROUP, INC.  
2211 West Bradley Avenue  
Champaign, Illinois 61821  
217/352-7408, 217/352-7406 fax

USER NAME = *USER*	DESIGNED - KRS	REVISED -
	DRAWN - SRL	REVISED -
PLOT SCALE = *SCALE*	CHECKED - JLF	REVISED -
PLOT DATE = *DATE*	DATE - 1/27/2017	REVISED -

**STATE OF ILLINOIS  
DEPARTMENT OF TRANSPORTATION**

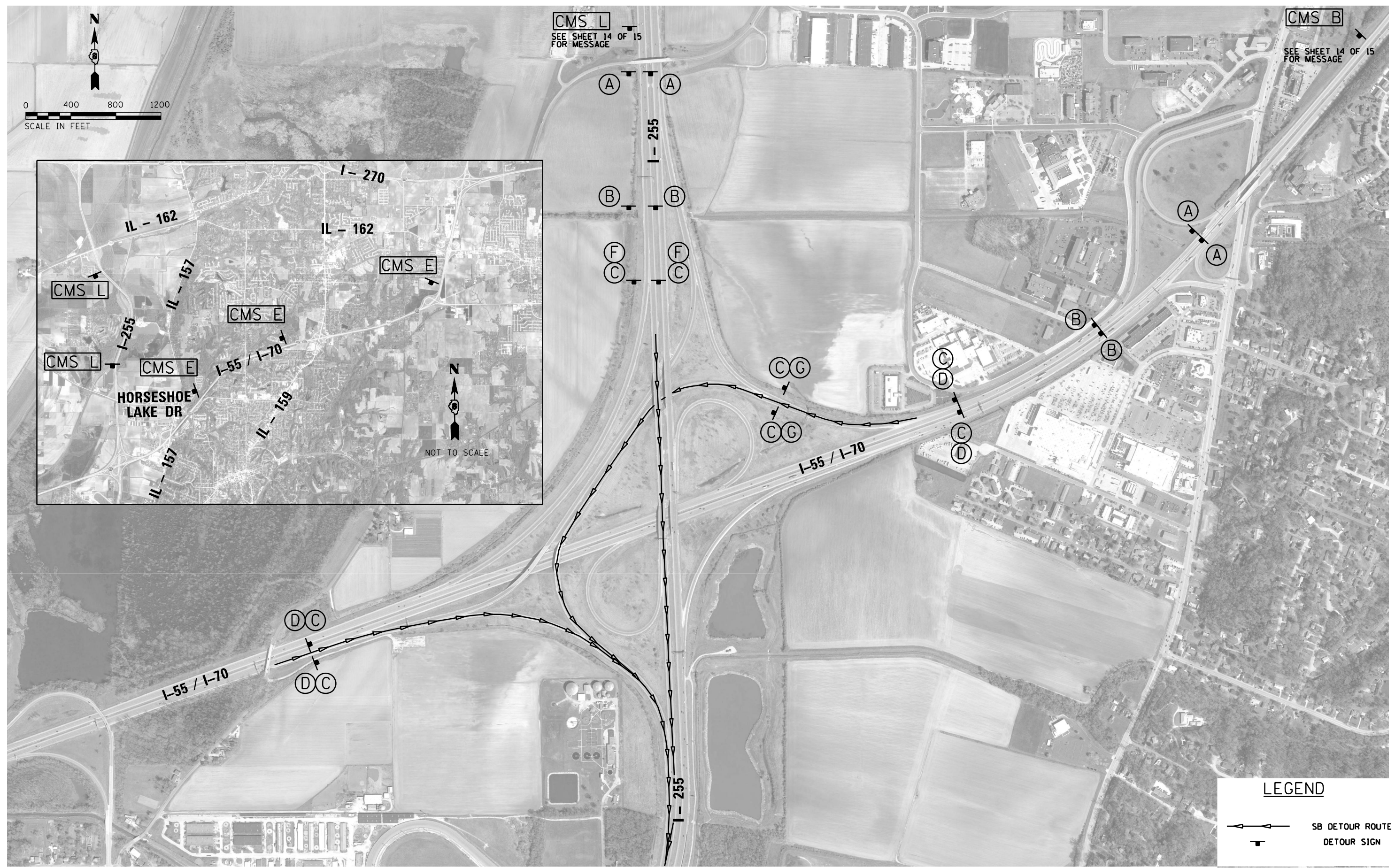
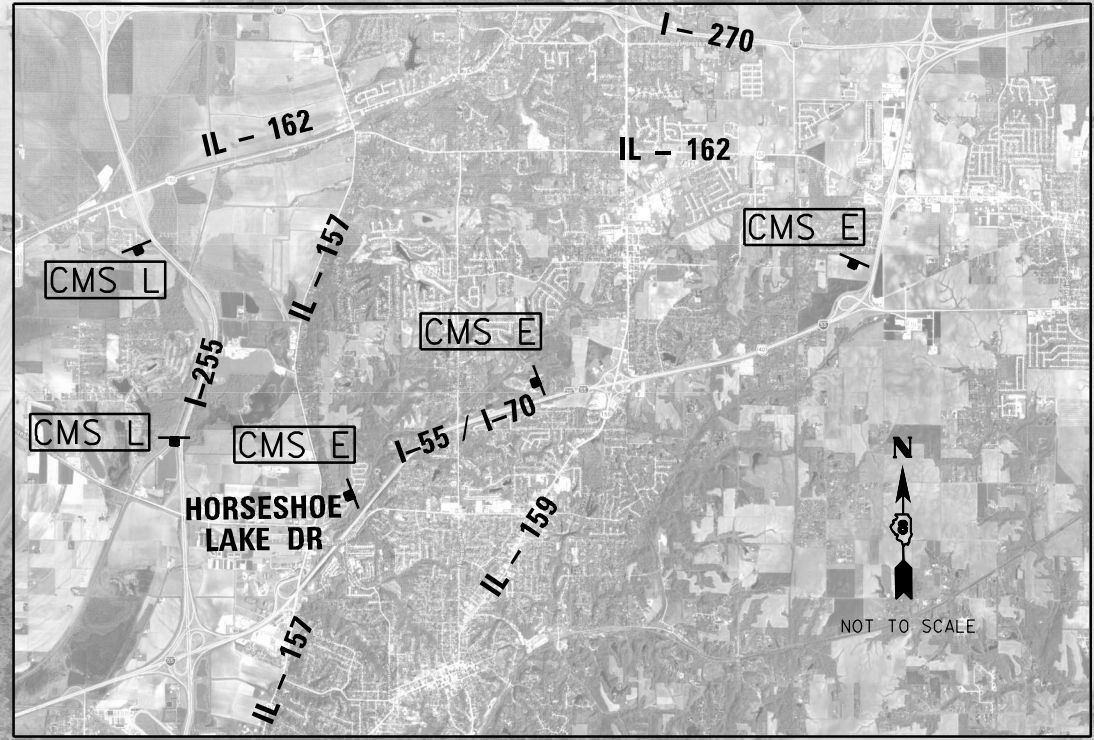
**INTERSTATE WEEKEND CLOSURE, SPECIAL  
INTERSTATE 55/70 AND INTERSTATE 255 - NORTHBOUND DETOUR**  
SCALE: 1"=400' SHEET 7 OF 15 SHEETS STA. TO STA.

F.A.I. RTE.	SECTION	COUNTY	TOTAL SHEETS	SHEET NO.
70	82-5VB-R-3	ST. CLAIR	20	10
CONTRACT NO. 76K16				
ILLINOIS FED. AID PROJECT				



**CMS L**  
SEE SHEET 14 OF 15  
FOR MESSAGE

**CMS B**  
SEE SHEET 14 OF 15  
FOR MESSAGE



**LEGEND**

SB DETOUR ROUTE  
 DETOUR SIGN

**Farnsworth GROUP, INC.**  
2211 West Bradley Avenue  
Champaign, Illinois 61821  
217/352-7408, 217/352-7406 fax

USER NAME = *USER*	DESIGNED - KRS	REVISED -
PLOT SCALE = *SCALE*	DRAWN - SRL	REVISED -
PLOT DATE = *DATE*	CHECKED - JLF	REVISED -
	DATE - 1/27/2017	REVISED -

**STATE OF ILLINOIS  
DEPARTMENT OF TRANSPORTATION**

**INTERSTATE WEEKEND CLOSURE, SPECIAL  
INTERSTATE 55/70 AND INTERSTATE 255 - SOUTHBOUND DETOUR**

SCALE: 1"=400'    SHEET 8 OF 15 SHEETS    STA. TO STA.

F.A.I. RTE.	SECTION	COUNTY	TOTAL SHEETS	SHEET NO.
70	82-5VB-R-3	ST. CLAIR	20	11
CONTRACT NO. 76K16				
ILLINOIS FED. AID PROJECT				



**LEGEND**

SB DETOUR ROUTE  
 DETOUR SIGN

**Farnsworth**  
GROUP, INC.  
2211 West Bradley Avenue  
Champaign, Illinois 61821  
217/352-7408, 217/352-7406 fax

USER NAME = *USER*	DESIGNED - KRS	REVISED -
PLOT SCALE = *SCALE*	DRAWN - SRL	REVISED -
PLOT DATE = *DATE*	CHECKED - JLF	REVISED -
	DATE - 1/27/2017	REVISED -

**STATE OF ILLINOIS  
DEPARTMENT OF TRANSPORTATION**

**INTERSTATE WEEKEND CLOSURE, SPECIAL  
INTERSTATE 55/70 AND BLACK LANE - SOUTHBOUND DETOUR**

SCALE: 1"=300'    SHEET 9    OF 15 SHEETS    STA.    TO STA.

F.A.I. RTE.	SECTION	COUNTY	TOTAL SHEETS	SHEET NO.
70	82-5VB-R-3	ST. CLAIR	20	12
CONTRACT NO. 76K16				
ILLINOIS FED. AID PROJECT				



0 300 600 900  
SCALE IN FEET

**CMS J**  
SEE SHEET 14 OF 15  
FOR MESSAGE

(C)  
(D) (C)  
(D)



**LEGEND**

←→ SB DETOUR ROUTE  
▬ DETOUR SIGN

**Farnworth**  
GROUP, INC.  
2211 West Bradley Avenue  
Champaign, Illinois 61821  
217/352-7408, 217/352-7406 fax

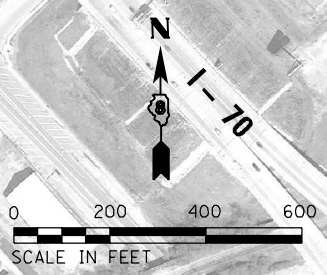
USER NAME = #USER#	DESIGNED - KRS	REVISED -
	DRAWN - SRL	REVISED -
PLOT SCALE = #SCALE#	CHECKED - JLF	REVISED -
PLOT DATE = #DATE#	DATE - 1/27/2017	REVISED -

**STATE OF ILLINOIS  
DEPARTMENT OF TRANSPORTATION**

**INTERSTATE WEEKEND CLOSURE, SPECIAL  
INTERSTATE 64 AND INTERSTATE 255 - SOUTHBOUND DETOUR**

SCALE: 1"=300' SHEET 10 OF 15 SHEETS STA. TO STA.

F.A.I. RTE.	SECTION	COUNTY	TOTAL SHEETS	SHEET NO.
70	82-5VB-R-3	ST. CLAIR	20	13
CONTRACT NO. 76K16				
ILLINOIS FED. AID PROJECT				



**LEGEND**

	BRIDGE CLOSED FOR REPAIR
	TRAFFIC CONTROL SIGN

**Farnsworth**  
GROUP, INC.  
2211 West Bradley Avenue  
Champaign, Illinois 61821  
217/352-7408, 217/352-7406 fax

USER NAME = *USER*	DESIGNED - KRS	REVISED -
DRAWN - SRL	REVISED -	
PLOT SCALE = *SCALE*	CHECKED - JLF	REVISED -
PLOT DATE = *DATE*	DATE - 1/27/2017	REVISED -

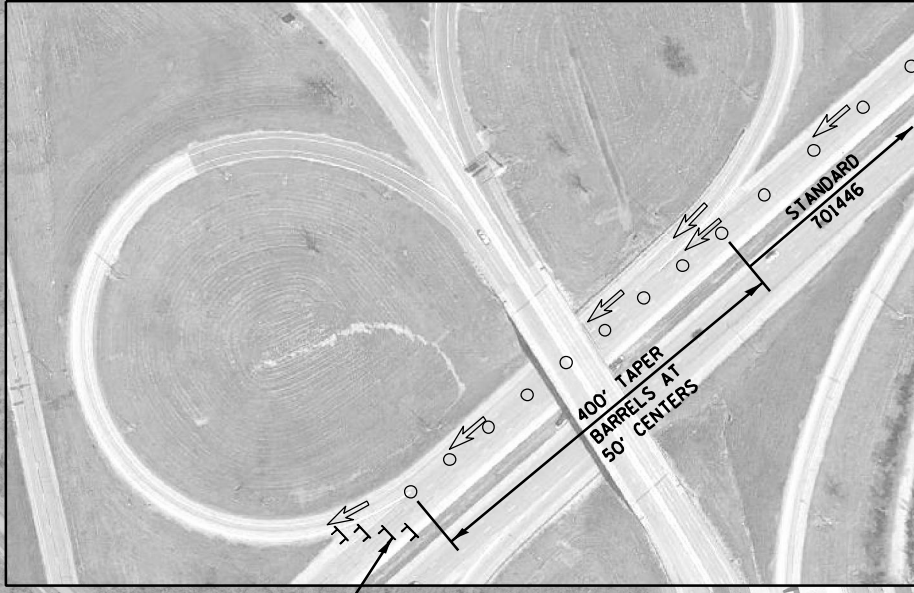
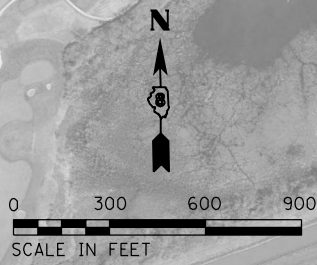
**STATE OF ILLINOIS  
DEPARTMENT OF TRANSPORTATION**

**INTERSTATE WEEKEND CLOSURE, SPECIAL  
INTERSTATE 55/70 AND INTERSTATE 64 - SOUTHBOUND DETOUR**

SCALE: 1"=200'    SHEET 11 OF 15 SHEETS    STA.    TO STA.

F.A.I. RTE.	SECTION	COUNTY	TOTAL SHEETS	SHEET NO.
70	82-5VB-R-3	ST. CLAIR	20	14
				CONTRACT NO. 76K16
ILLINOIS FED. AID PROJECT				





TYPE III BARRICADES WITH ROAD CLOSED SIGNS ACROSS ALL LANES AND SHOULDERS.

TYPE III BARRICADES WITH ROAD CLOSED SIGNS IN RIGHT TWO LANES AND SHOULDER.

SEE INSET FOR TYPE III BARRICADE AND BARREL PLACEMENT

TYPE III BARRICADES ACROSS ALL LANES AND SHOULDERS AT END OF BRIDGE

CLOSE RIGHT TWO LANES ACCORDING TO STANDARDS 701400 AND 701446 USING DRUMS

CLOSE LEFT TWO LANES ACCORDING TO STANDARDS 701400 AND 701446 USING DRUMS

RAMP CLOSED ACCORDING TO STANDARD 701451. TYPE III BARRICADES ACROSS ALL RAMP LANES AND SHOULDERS.

LEGEND			
- x - x -	ROAD CLOSED TO TRAFFIC		
↔	SB DETOUR ROUTE		
TT	TYPE III BARRICADE		
⊥	DETOUR SIGN		

**Farnsworth GROUP, INC.**  
2211 West Bradley Avenue  
Champaign, Illinois 61821  
217/352-7408, 217/352-7406 fax

USER NAME = *USER*	DESIGNED - KRS	REVISED -
PLOT SCALE = *SCALE*	DRAWN - SRL	REVISED -
PLOT DATE = *DATE*	CHECKED - JLF	REVISED -
	DATE - 1/27/2017	REVISED -

**STATE OF ILLINOIS  
DEPARTMENT OF TRANSPORTATION**

**INTERSTATE WEEKEND CLOSURE, SPECIAL  
INTERSTATE 55/70 AND ILLINOIS 203 - SOUTHBOUND DETOUR**

SCALE: 1"=300' SHEET 13 OF 15 SHEETS STA. TO STA.

F.A.I. RTE.	SECTION	COUNTY	TOTAL SHEETS	SHEET NO.
70	82-5VB-R-3	ST. CLAIR	20	16
CONTRACT NO. 76K16				
ILLINOIS FED. AID PROJECT				



CHANGEABLE MESSAGE SIGN MESSAGES

CMS A (1 MILE BEFORE DMS 1 ON I-64 WB)

MESSAGE 1

55N 70E  
CLOSED  
AHEAD

MESSAGE 2

USE  
I255N TO  
55N 70E

CMS E (1 MILE BEFORE DMS 4 ON I-55 SB/I-70 WB, 0.25 MILES AFTER IL-162 ENTRANCE ON I-55 SB/I-70 WB, 0.50 MILES AFTER IL-159 ENTRANCE ON I-55 SB/I-70 WB, 0.50 MILES BEFORE IL-157 EXIT ON I-55 SB/I-70 WB)

MESSAGE 1

55S 70W  
CLOSED  
AHEAD

MESSAGE 2

USE  
I255S  
TO I64W

CMS B (1 MILE BEFORE DMS 2 ON I-55 NB/I-64 EB)

MESSAGE 1

55N 70E  
CLOSED  
AHEAD

MESSAGE 2

USE  
I64E  
TO I255N

CMS F (1 MILE BEFORE DMS 5 ON I-70 WB)

MESSAGE 1

I70W  
CLOSED  
AHEAD

MESSAGE 2

USE 270S  
TO I70W  
IN MO

CMS J (1 MILE BEFORE EXIT 20 ON I-255 SB)

MESSAGE 1

DETOUR  
55S 70W  
-----

MESSAGE 2

USE  
EXIT 20  
I64W

CMS C (3 MILES , 2 MILES AND 1 MILE BEFORE I-55 NB/I-64 EB/I-70 EB ON 70 EB. 0.5 MILE AND 500 FEET AFTER MLK DRIVE EXIT GORE AREA ON MLK BRIDGE.)

MESSAGE 1

55N 70E  
CLOSED  
AHEAD

MESSAGE 2

USE  
I64E  
TO I255N

CMS G (1 MILE BEFORE DMS 6 ON I-55 SB)

MESSAGE 1

I55S  
CLOSED  
AHEAD

MESSAGE 2

USE 255S  
TO I55S  
IN MO

CMS K (1 MILE BEFORE EXIT 25A ON I-255 NB)

MESSAGE 1

DETOUR  
55N 70E  
-----

MESSAGE 2

USE  
EXIT 25A  
AHEAD

CMS D (1 MILE BEFORE DMS 3 ON I-55 SB/I-70 WB)

MESSAGE 1

55S 70W  
CLOSED  
AHEAD

MESSAGE 2

USE  
EXIT  
4A OR 4B

CMS H (1 MILE BEFORE EXIT 7 ON I- 64 EB)

MESSAGE 1

DETOUR  
55N 70E  
-----

MESSAGE 2

USE  
EXIT 7  
I255N

CMS L (1.25 MILES BEFORE I-55 SB/I-70 WB ON I-255 SB, 0.25 MILES AFTER IL-162 ENTRANCE ON I-255 SB)

MESSAGE 1

55S 70W  
CLOSED  
AT IL203

MESSAGE 2

DETOUR  
REMAIN  
ON I255S

DYNAMIC MESSAGE SIGN MESSAGES

DMS #1 (WB I-64 0.25 MILES BEFORE BUNKUM RD)

MESSAGE 1

NB I-55/EB I-70 CLOSED  
8 MILES AHEAD

DMS #5 (WB I-70 1.5 MILES BEFORE I-55/I-270)

MESSAGE 1

WB I-70 CLOSED AT IL 203  
16 MI AHEAD NEAR DOWNTOWN  
FOLLOW MARKED DETOUR

MESSAGE 2

WB I-70 THROUGH TRAFFIC  
USE I-270 WB TO I-70 WB  
IN MISSOURI

DMS #2 (NB I-55/EB I-64 AND 4TH STREET)

MESSAGE 1

NB I-55/EB I-70 CLOSED @ I-64  
FOLLOW MARKED DETOUR  
I-64E TO I-255N

DMS #6 (SB I-55 2 MILES BEFORE I-70/I-270)

MESSAGE 1

SB I-55 CLOSED AT IL 203  
16 MI AHEAD NEAR DOWNTOWN  
FOLLOW MARKED DETOUR

MESSAGE 2

SB I-55 THROUGH TRAFFIC  
USE I-255 SB TO I-55 SB  
IN MISSOURI

DMS #3 (SB I-55/WB I-70 1 MILES BEFORE IL-203)

MESSAGE 1

SB I-55/WB I-70 CLOSED  
ALL LANES MUST EXIT  
USE EXIT 4A OR 4B

DMS #4 (SB I-55 2 MILES BEFORE IL 157)

MESSAGE 1

SB I-55/WB I-70 CLOSED @ IL203  
FOLLOW MARKED DETOUR  
I-255S TO I-64W



USER NAME = *USER*	DESIGNED - KRS	REVISED -
	DRAWN - SRL	REVISED -
PLOT SCALE = *SCALE*	CHECKED - JLF	REVISED -
PLOT DATE = *DATE*	DATE - 1/27/2017	REVISED -

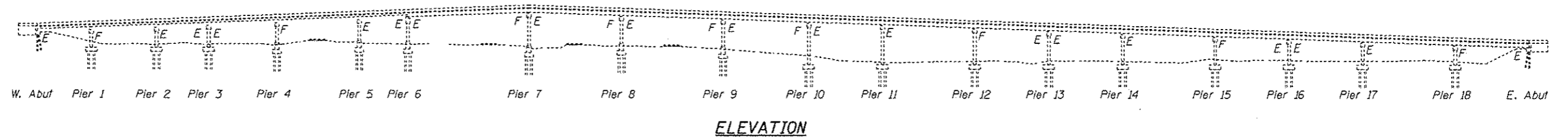
STATE OF ILLINOIS  
DEPARTMENT OF TRANSPORTATION

INTERSTATE WEEKEND CLOSURE, SPECIAL  
DYNAMIC MESSAGE SIGN MESSAGES

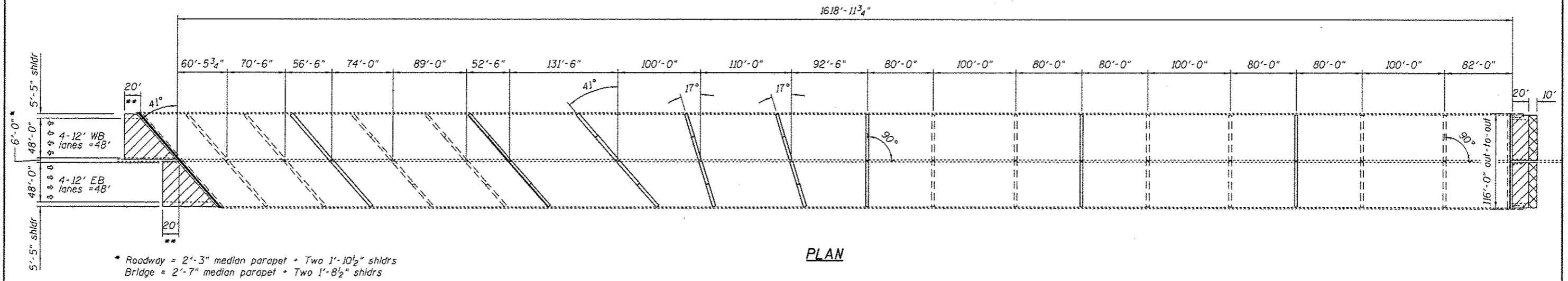
SCALE: NTS SHEET 15 OF 15 SHEETS STA. TO STA.

F.A.I. RTE.	SECTION	COUNTY	TOTAL SHEETS	SHEET NO.
70	82-5VB-R-3	ST. CLAIR	20	18
				CONTRACT NO. 76K16
ILLINOIS FED. AID PROJECT				

Existing Structure: Built in 1959 as a 19 span wide flange and riveted plate girder with multi-column pile supported piers, and pile bent abutments. In 1988 the deck and bearings were replaced. In 1997 seismic retrofits were installed and the neoprene joints were replaced with silicone and polymer at the abutments and piers 7, 8, and 9. All of the joints shall be replaced with new silicone with polymer concrete nosing. Areas of broken joint blockouts shall be repaired. The deck shall be partial depth patched. The approaches shall be repaired. The EB and WB lanes will be closed with traffic detoured on the weekends.



ELEVATION



PLAN

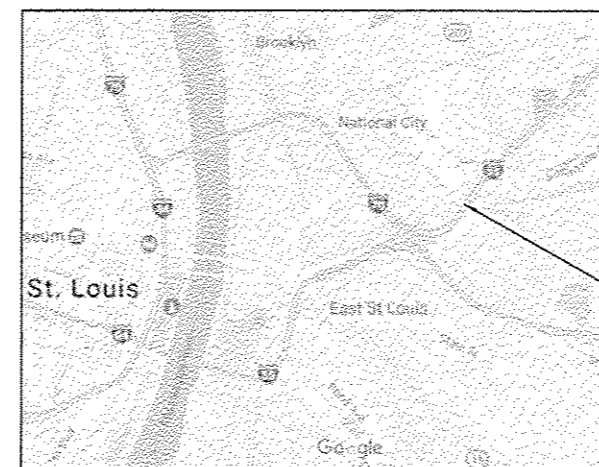
\* Roadway = 2'-3" median parapet + Two 1'-10 1/2" shldr  
 Bridge = 2'-7" median parapet + Two 1'-8 1/2" shldr  
 \*\* 20' at outside lane line next to shoulder  
 (Average length at center lane line = 40.863')

GENERAL NOTES

Plan dimensions and details relative to existing plans are subject to nominal construction variations. The Contractor shall field verify existing dimensions and details affecting new construction and make necessary approved adjustments prior to construction or ordering of materials. Such variations shall not be cause for additional compensation for a change in scope of the work, however, the Contractor will be paid for the quantity actually furnished at the unit price bid for the work.

No field welding is permitted except as specified in the contract documents.

- 20' Concrete Approach - Partial Depth Removal & Patching
- 10' HMA east of E Approach - Partial Depth Removal & Patching



LOCATION SKETCH

TOTAL BILL OF MATERIAL

ITEM	UNIT	TOTAL
*** Deck Slab Repair (Partial)	Sq. Yd.	21
Silicone Joint Sealer, 1.5"	Foot	115
Silicone Joint Sealer, 2"	Foot	497
Silicone Joint Sealer, 2.5"	Foot	422
Silicone Joint Sealer, 3"	Foot	271
Polymer Concrete	Cu. Ft.	163
Partial Depth Patching	Ton	98
Partial Depth Removal, Type IV, 2"	Sq. Yd.	871

\*\*\* Quantities are estimated assuming 64'x0.5' = 4 sq.yd repairs at joints; in addition to 17 sq. yds estimated repairs in deck. The Engineer shall determine the actual locations, and record them in the As-Built plans.

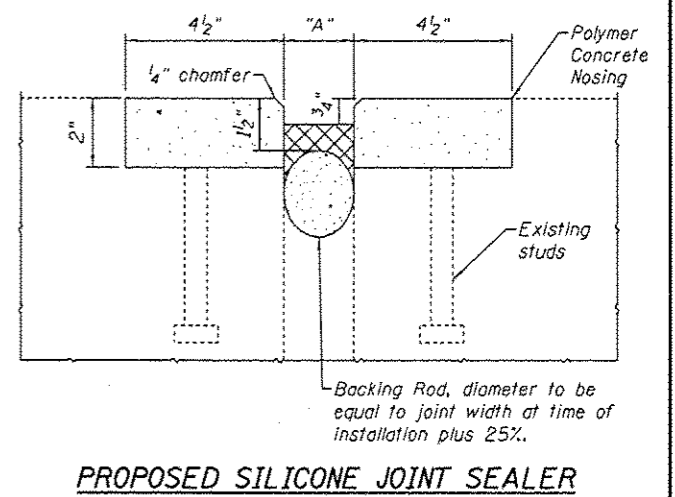
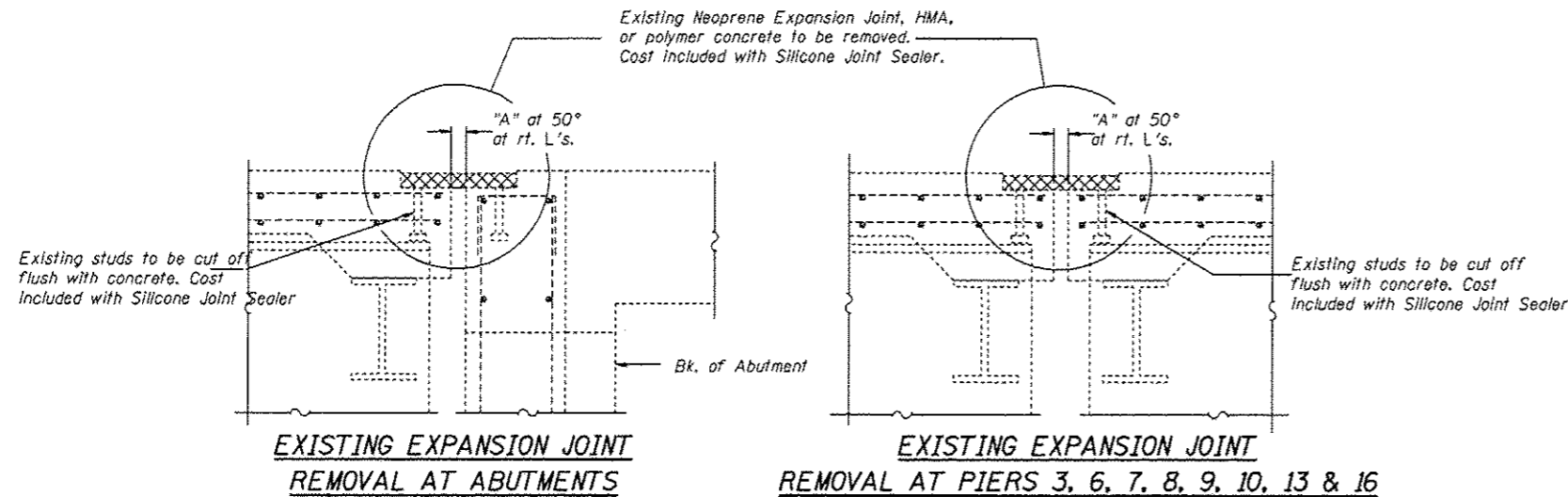
DESIGNED - J. Uehle	EXAMINED	DATE - APRIL 28, 2017
CHECKED - ATH	ENGINEER OF STRUCTURAL SERVICES	
DRAWN - J. Uehle	PASSED	REVISED
CHECKED - ATH	ENGINEER OF BRIDGES AND STRUCTURES	REVISED

STATE OF ILLINOIS  
 DEPARTMENT OF TRANSPORTATION

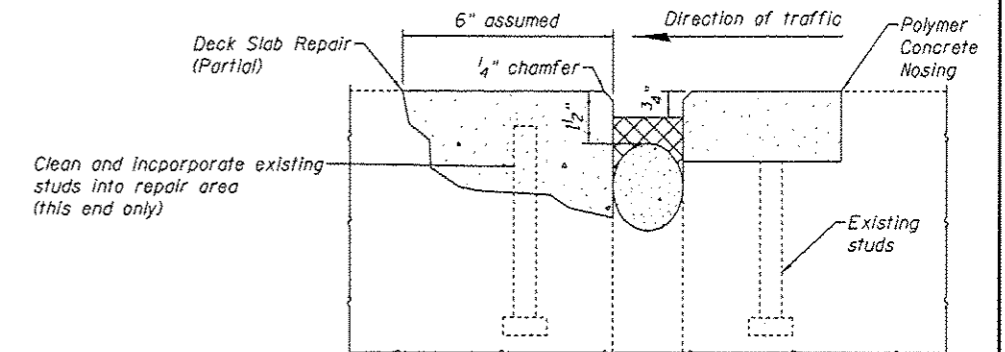
GENERAL PLAN AND ELEVATION  
 SN 082-0017 I-55/70 OVER RR YARD

SHEET NO. 1 OF 2 SHEETS

F.A.I. RTE.	SECTION	COUNTY	TOTAL SHEETS	SHEET NO.
55/70	82-5VB-R-3	ST. CLAIR	20	19
			CONTRACT NO. 76K16	
ILLINOIS FED. AID PROJECT				



	"A" (in.)	Expansion Length (ft.)	skew (degrees)	Length along skew between parapets (ft.)	Silicone Joint Sealer (ft.)				EB Joints Repair Length (ft)	EB Joints Repair Length (ft)	Polymer Concrete (cu. ft.)
					1.5"	2.0"	2.5"	3.0"			
W Abut	2.0	56.5	41	146.1		151.1			8	3	18.6
P3	3.0	201.0	41	146.1				151.1	18	6	17.8
P6	2.5	273.0	41	146.1			151.1		4	3	18.9
P7	2.5	100.0	41	146.1			151.1				19.3
P8	3.0	110.0	17	115.3				120.3			15.5
P9	2.5	92.5	17	115.3			120.3		2		15.3
P10	2.0	180.0	0	110.3		115.3			6		14.4
P13	1.5	260.0	0	110.3	115.3				2		14.7
P16	2.0	260.0	0	110.3		115.3			3	3	14.4
E Abut	2.0	79.3	0	110.3		115.3			3	3	14.4
		<b>1612</b>	<b>TOTAL</b>	<b>1256</b>	<b>115</b>	<b>497</b>	<b>422</b>	<b>271</b>	<b>46</b>	<b>18</b>	<b>163</b>

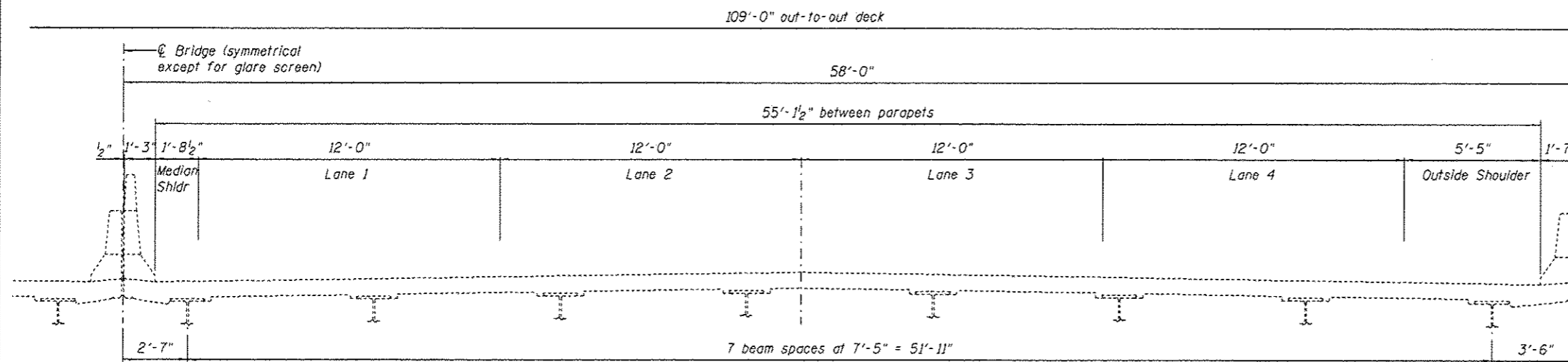


**NOTES**

Length of silicone in parapets =  $4 \times (1' 3") = 5'-0"$   
 Silicone Joint Sealer (ft.) = Length along skew +  $5'-0"$   
 Length of  $2" \times 4\frac{1}{2}"$  polymer concrete in parapets =  $4 \times (1' 3" + 2' 11") = 16'-8"$   
 Polymer concrete length =  $(2 \times \text{Length along skew}) + 16'-8" - \text{Repair Length}$   
 Polymer Concrete (cu. ft.) = length  $\times (2/12) \times (4.5/12)$

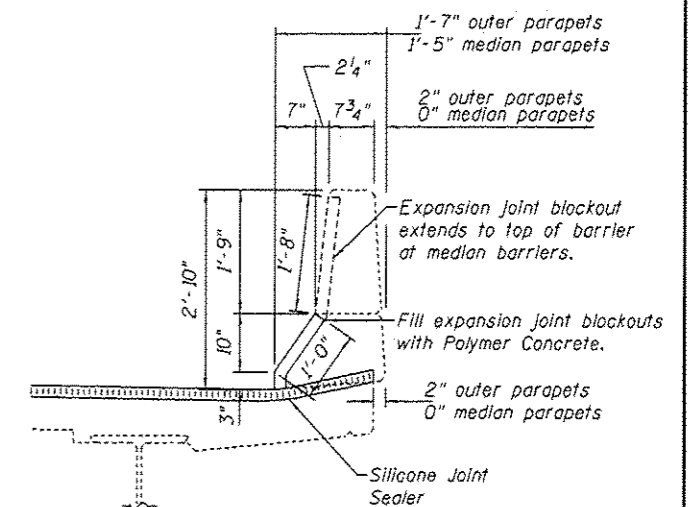
**DECK SLAB REPAIR (PARTIAL)**

(Various locations on departing side of joint)



**CROSS SECTION**

(WB - Looking West)  
(EB - Looking East)



**PARAPET DETAIL**

Joint opening is parallel to skew out to the inside face of parapet, then turns 90° to  $\phi$  of roadway. Special care shall be taken at this location to ensure that silicone forms a watertight seal with the concrete.

DESIGNED - J. Uehle	EXAMINED	DATE - APRIL 28, 2017	STATE OF ILLINOIS DEPARTMENT OF TRANSPORTATION	JOINT DETAILS SN 082-0017	F.A.I. RTE. 55/70	SECTION 82-5VB-R-3	COUNTY ST. CLAIR	TOTAL SHEETS	SHEET NO.
CHECKED - ATH	ENGINEER OF STRUCTURAL SERVICES	REVISED						20	20
DRAWN - J. Uehle	ENGINEER OF BRIDGES AND STRUCTURES	REVISED						CONTRACT NO. 76K16	
CHECKED - ATH								ILLINOIS FED. AID PROJECT	