

STATE OF ILLINOIS
DEPARTMENT OF TRANSPORTATION

F.A. RTE.	SECTION	COUNTY	TOTAL SHEETS	SHEET NO.
	PARK ROADS 2017-06	VERMILION	8	1
		ILLINOIS	CONTRACT NO. 46438	

D-5

FOR INDEX OF SHEETS, SEE SHEET NO. 02

PROPOSED HIGHWAY PLANS

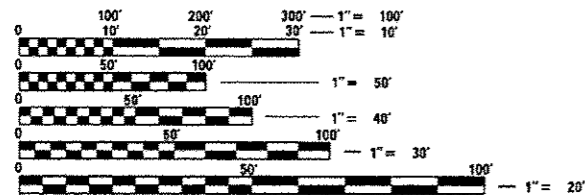
MIDDLE FORK STATE FISH & WILDLIFE AREA
SECTION PARK ROADS 2017-06

OIL AND CHIP
VERMILION COUNTY

C-30-024-17

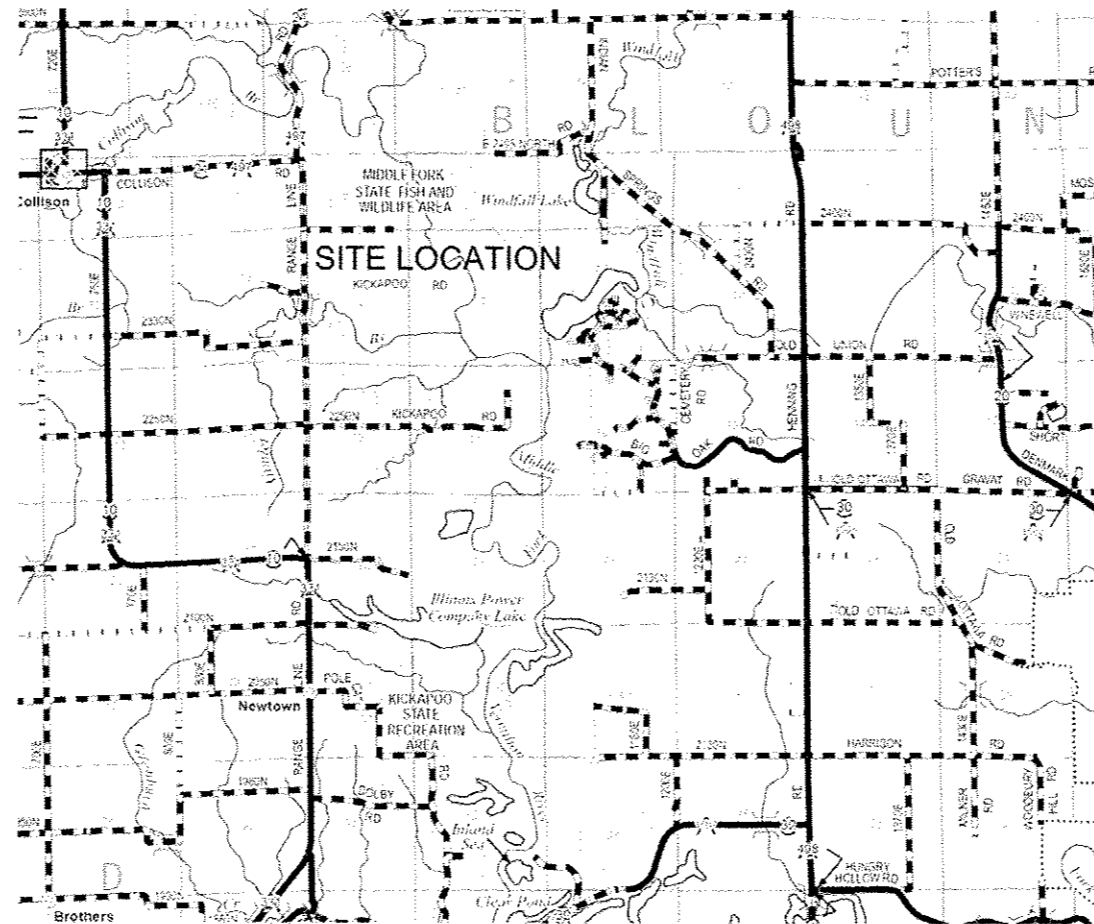


IDNR FILE # 3-17-007



FULL SIZE PLANS HAVE BEEN PREPARED USING STANDARD ENGINEERING SCALES. REDUCED SIZED PLANS WILL NOT CONFORM TO STANDARD SCALES. IN MAKING MEASUREMENTS ON REDUCED PLANS, THE ABOVE SCALES MAY BE USED.

J.U.L.I.E.
JOINT UTILITY LOCATION INFORMATION FOR EXCAVATION
1-800-892-0123
OR 811



GROSS AND NET LENGTH = 1.85 MI

PROJECT ENGINEER VINCE MADONIA 217 /782-4074

CONTRACT NO. 46438

STATE OF ILLINOIS
DEPARTMENT OF TRANSPORTATION

SUBMITTED 2-17-2017 *[Signature]* 2
REGIONAL ENGINEER

Mar 24 2017 *[Signature]*
ENGINEER OF DESIGN AND ENVIRONMENT

2-17-2017 *[Signature]* 2
DIRECTOR OF PROGRAM DEVELOPMENT

PRINTED BY THE AUTHORITY
OF THE STATE OF ILLINOIS

GENERAL NOTES:

1. ANY REFERENCE TO A STANDARD IN THESE PLANS SHALL BE INTERPRETED TO MEAN THE EDITION AS INDICATED BY THE SUB NUMBER LISTED IN THE INDEX OF SHEETS OR THE COPY OF THE STANDARD INCLUDED IN THESE PLANS.
2. IN ADDITION TO FIELD SURVEYS, PLAN DIMENSIONS AND DETAILS RELATIVE TO THE EXISTING FACILITIES HAVE BEEN TAKEN FROM EXISTING PLANS AND ARE SUBJECT TO CONSTRUCTION VARIATIONS. IT SHALL BE THE CONTRACTOR'S RESPONSIBILITY TO VERIFY SUCH DIMENSIONS AND DETAILS IN THE FIELD. SUCH VARIATIONS SHALL NOT BE A CAUSE FOR ADDITIONAL COMPENSATION DUE TO A CHANGE IN THE SCOPE OF WORK; HOWEVER, THE CONTRACTOR WILL BE PAID FOR THE QUANTITY ACTUALLY FURNISHED AT THE UNIT PRICE BID FOR THE WORK.
3. THE CONTRACTOR SHALL BE RESPONSIBLE FOR PROTECTING UTILITY PROPERTY FROM CONSTRUCTION OPERATIONS, AS OUTLINED IN ARTICLE 107.31 OF THE STANDARD SPECIFICATIONS. THE J.U.L.I.E. NUMBER IS 1-800-892-0123. A MINIMUM OF 48 HOURS ADVANCE NOTICE IS REQUIRED.

HIGHWAY STANDARDS

000001-06
 701901-06
 BLR 18-6
 BLR 17-4
 BLR 21-9
 BLR 22-7

BITUMINOUS SURFACE TREATMENTS: GRADATION CA-14 (MID SPEC.) IS ASSUMED FOR COVER COATS AND GRADATION CA-16 (MID-SPEC.) IS ASSUMED FOR SEAL COATS. THE AGGREGATE SHALL BE EITHER CRUSHED GRAVEL OR CARBONATE CRUSHED STONE AND SHALL BE CLASS C QUALITY OR BETTER. THE RESULTING TARGET APPLICATION RATES ARE AS FOLLOWS:

TYPE OF CONSTRUCTION	BITUMINOUS MATERIAL	APPLICATION RATE	AGGREGATE	APPLICATION RATE
TACK COAT (HARD SURFACE) *	Art. 406.02	0.1 GAL/SQ YD	FA-1 OR FA-2	3 LB/SQ YD
PRIME COAT (AGGREGATE SURFACE) *	MC-30 or PEP	0.25 GAL/SQ YD	FA-1 OR FA-2	4 LB/SQ YD
A-1	HFP/CRSP	0.35 GAL/SQ YD	CA-16	19 LB/SQ YD
A-2 (COVER COAT)	HFP/CRSP	0.32 GAL/SQ YD	CA-14	25 LB/SQ YD
A-2 (SEAL COAT)	HFP/CRSP	0.4 GAL/SQ YD	CA-16	19 LB/SQ YD
A-3 (1ST COVER COAT)	HFP/CRSP	0.32 GAL/SQ YD	CA-14	25 LB/SQ YD
A-3 (2ND COVER COAT)	HFP/CRSP	0.45 GAL/SQ YD	CA-14	25 LB/SQ YD
A-3 (SEAL COAT)	HFP/CRSP	0.35 GAL/SQ YD	CA-16	19 LB/SQ YD

* TO BE USED WITH A1, A2 AND A3 SEAL COATS

NOTE: THE ENGINEER RESERVES THE RIGHT TO ADJUST THE TARGET APPLICATION RATES AND THE QUANTITIES.

INDEX OF SHEETS

- 1 COVER SHEET
- 2 STANDARDS AND GENERAL NOTES
- 3 SUMMARY OF QUANTITIES
- 4 SCHEDULES
- 5 PLAN VIEW - PROJECT LIMITS
- 6 PLAN VIEW - NORTH AREA
- 7 PLAN VIEW - SOUTH AREA
- 8 RIVER ROCK PLACEMENT DETAIL

FILE NAME *	USER NAME * #USER#	DESIGNED -	REVISED -	STATE OF ILLINOIS DEPARTMENT OF TRANSPORTATION	STANDARDS AND GENERAL NOTES		F.A. RTE.	SECTION	COUNTY	TOTAL SHEETS	SHEET NO.
#FILE#		DRAWN -	REVISED -					PARK ROADS 2017-06	VERMILION	8	2
#MODELNAME#		CHECKED -	REVISED -		SCALE:	SHEET 1 OF 1 SHEETS	STA.	TO STA.	ILLINOIS FED. AID PROJECT CONTRACT NO. 46438		
		DATE -	REVISED -								

105 94 051

PARK ROADS
100% STATE ✓
ROADWAY

CODE NO.	ITEM	UNIT	TOTAL QUANTITY	0005 RURAL ✓
28200200	FILTER FABRIC	SQ YD	100	100
35800100	PREPARATION OF BASE	SQ YD	14,867	14,867
35800200	AGGREGATE BASE REPAIR	TON	591.2	591.2
40300200	BITUMINOUS MATERIALS (PRIME COAT)	TON	33.1	33.1
40300400	BITUMINOUS MATERIALS (COVER AND SEAL COATS)	TON	136.9	136.9
40300500	COVER COAT AGGREGATE	TON	501.8	501.8
40300600	SEAL COAT AGGREGATE	TON	454.5	454.5
67100100	MOBILIZATION	LSUM	1	1
X0100002	GRADING AND SHAPING SPECIAL	SQ YD	100	100
X1800002	RIVER ROCK	TON	25	25

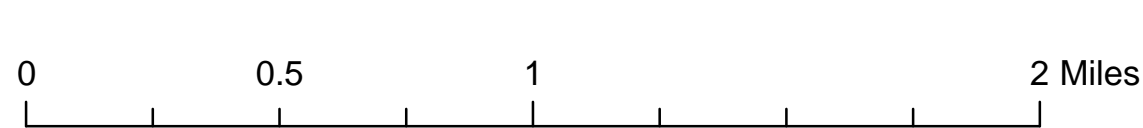
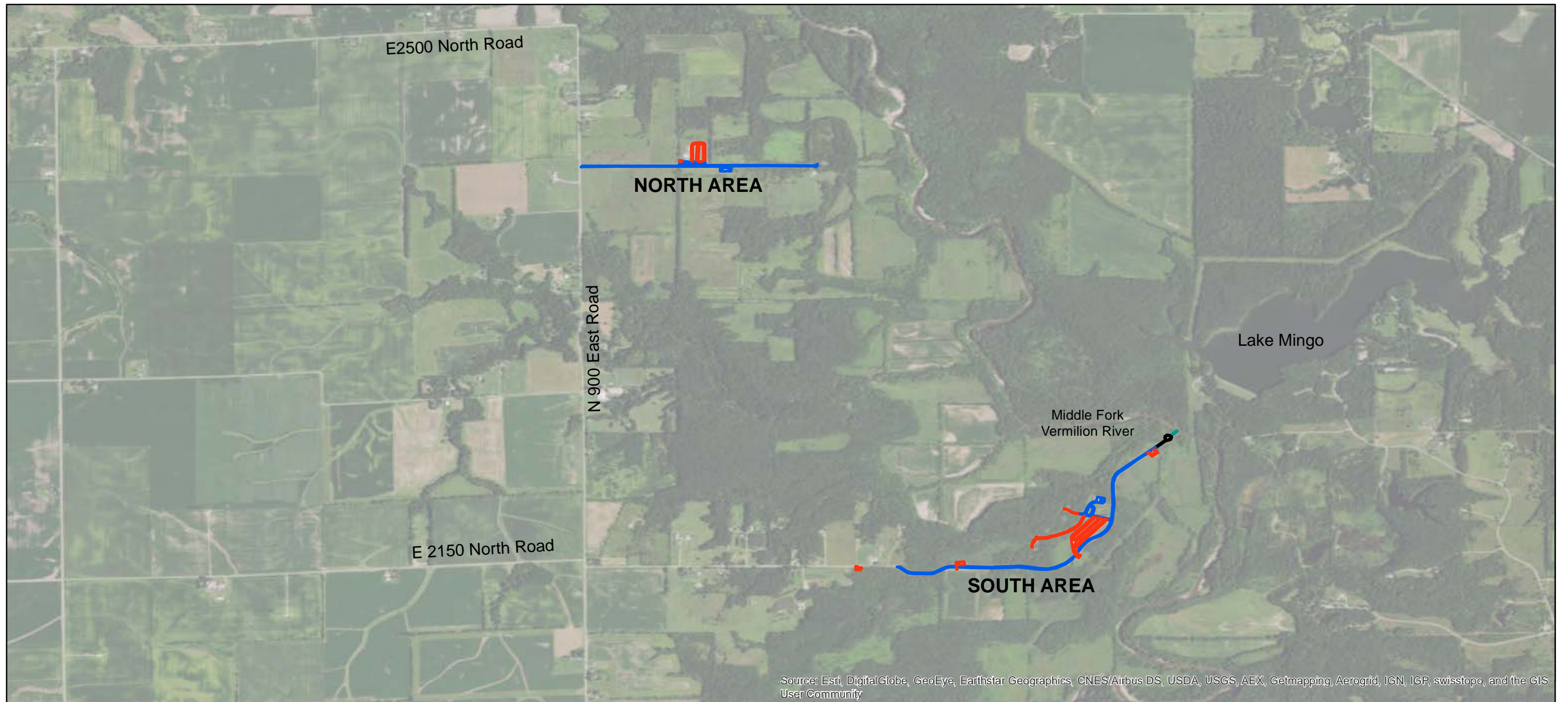
10

REV

Middle Fork State Park - Schedule of Quantities

Application Rates:	Prime Coat	0.25	gal/SY	Prime/Tack Density	8.5	lb/gal
	Tack Coat	0.1	gal/SY	Cov. Coat Density	8.5	lb/gal
	Bit Cover Coat 1	0.32	gal/SY	Bit Seal Coat Den.	8.5	lb/gal
	Agg Cover Coa	25	lb/SY			
	Bit Cover Coat 2	0.45	gal/SY			
	Agg Cover Coa	25	lb/SY			
	Bit Seal Coat	0.35	gal/SY			
	Bit Seal Coat Agg	19	lb/SY			

	Length (mi)	Ave. Width (ft)	Area (SY)	Tmt (A-1/A-3)	Prime Coat (T)	Tack Coat (T)	Bit. Cover Coat 1 (T)	Agg. Cover Coat 1 (T)	Bit. Cover Coat 2 (T)	Agg. Cover Coat 2 (T)	Bit. Seal Coat (T)	Bit. Seal Coat Agg. (T)	Preparation of Base (SY)	Aggregate Base Repair (T)	River Rock (T)			
<i>Roadways</i>																		
<i>North Area</i>																		
2400 N Road (ex O&C)	0.687	20	8,061	A-1	--	3.43	--	--	--	--	11.99	76.58	--	--	--			
Lot 5 (ex. O&C)			1,450	A-1	--	0.62	--	--	--	--	2.16	13.78	--	--	--			
Office Road (ex. O&C)			1,905	A-1	--	0.81	--	--	--	--	2.83	18.10	--	--	--			
Office Road (ex. gravel)			430	A-3	0.46	--	0.58	5.38	0.82	5.38	0.64	4.09	--	--	--			
Horse Parking Area (ex. Gravel)			4,415	A-3	4.69	--	6.00	55.19	8.44	55.19	6.57	41.94	1,000	22.78	--			
<i>South Area</i>																		
2250 N Road (ex O&C)	1.055	20	12,379	A-1	--	5.26	--	--	--	--	18.41	117.60	--	--	--			
River Turnaround	0.105	20	1,232	gravel	--	--	--	--	--	--	--	--	1,232	280.62	--			
Parking Area #1 (ex. Gravel)			560	A-3	0.60	--	0.76	7.00	1.07	7.00	0.83	5.32	--	--	--			
Parking Area #2 (ex. Gravel)			875	A-3	0.93	--	1.19	10.94	1.67	10.94	1.30	8.31	--	--	--			
Parking Area #3 (ex. Gravel)			350	A-3	0.37	--	0.48	4.38	0.67	4.38	0.52	3.33	--	--	--			
Parking Area #4 (ex. Gravel)			805	A-3	0.86	--	1.09	10.06	1.54	10.06	1.20	7.65	--	--	--			
Parking Area #5 (ex. Gravel)			9,050	A-3	9.62	--	12.31	113.13	17.31	113.13	13.46	85.98	9,050	206.14	--			
Day Parking (ex O&C)			3,982	A-1	--	1.69	--	--	--	--	5.92	37.83	--	--	--			
Campground Access #1 (ex Gravel)			2,680	A-3	2.85	--	3.64	33.50	5.13	33.50	3.99	25.46	2,680	61.04	--			
Campground Access #2 (ex Gravel)			905	A-3	0.96	--	1.23	11.31	1.73	11.31	1.35	8.60	905	20.61	--			
River Access			250	gravel	--	--	--	--	--	--	--	--	--	--	25			
TOTAL LENGTH	1.85						TOTALS	21.3	11.8	27.3	250.9	38.4	250.9	71.2	454.5	14,867	591.2	25.0



Legend

- Gravel to O&C
- Oil & Chip resurface
- Upgrade Existing Gravel Surface
- Upgrade Existing River Rock Surface on Ramp

Plan View - Entire Project Limits

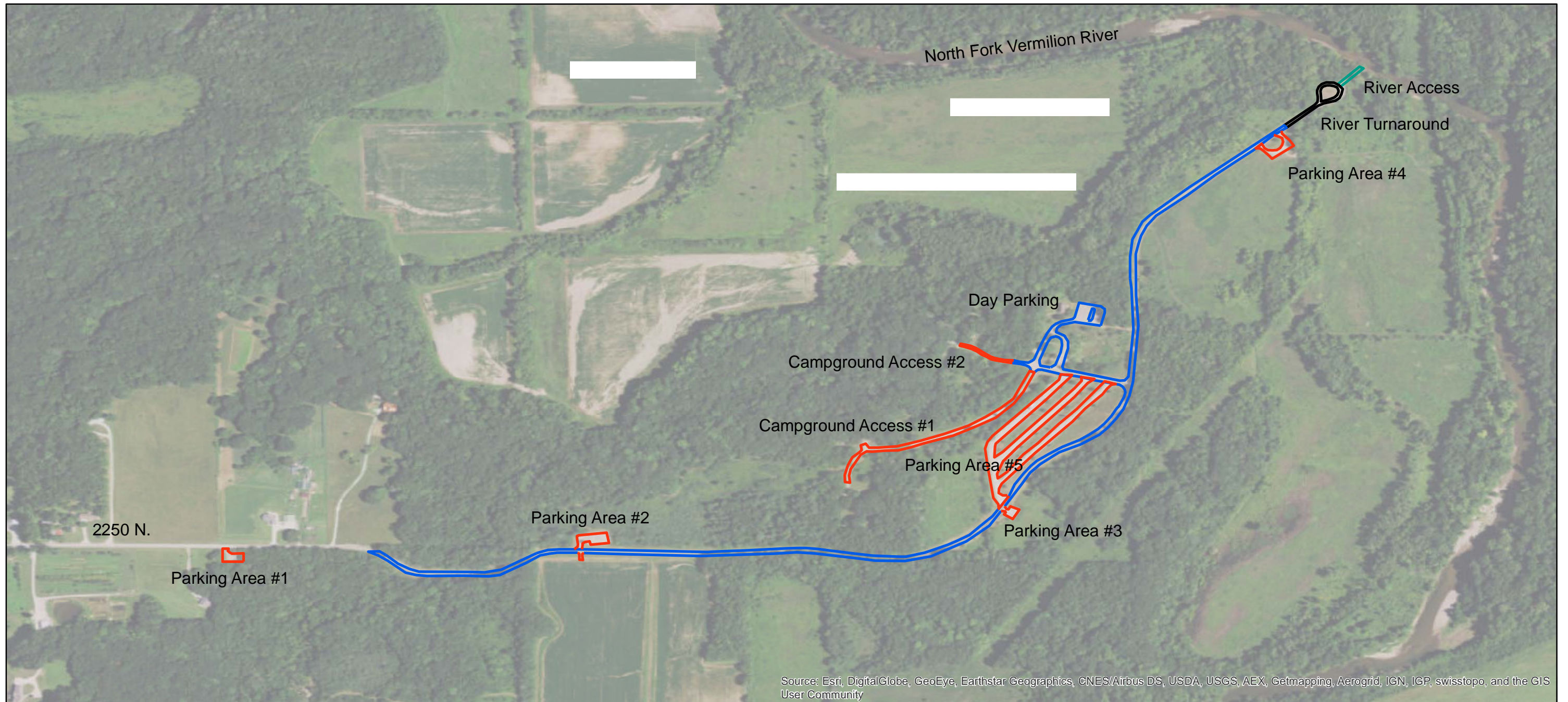
Contract 46438
MIDDLE FORK STATE PARK
VERMILION COUNTY
Section PARK ROADS 2017-06
Sheet 05 of 08



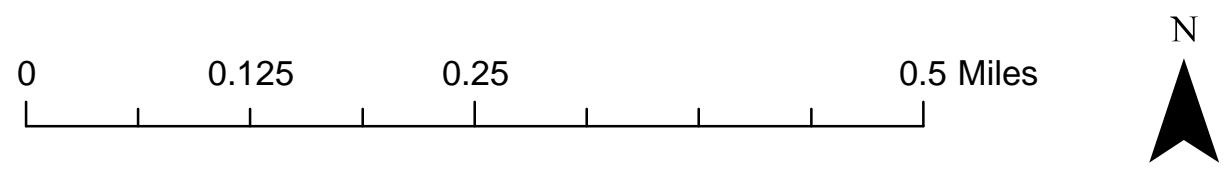
- Legend**
- Gravel to O&C
 - Oil & Chip resurface

Plan View - North Area

**Contract 46438
 MIDDLE FORK STATE PARK
 VERMILION COUNTY
 Section PARK ROADS 2017-06
 Sheet 06 of 08**



Source: Esri, DigitalGlobe, GeoEye, Earthstar Geographics, CNES/Airbus DS, USDA, USGS, AEX, Getmapping, Aerogrid, IGN, IGP, swisstopo, and the GIS User Community

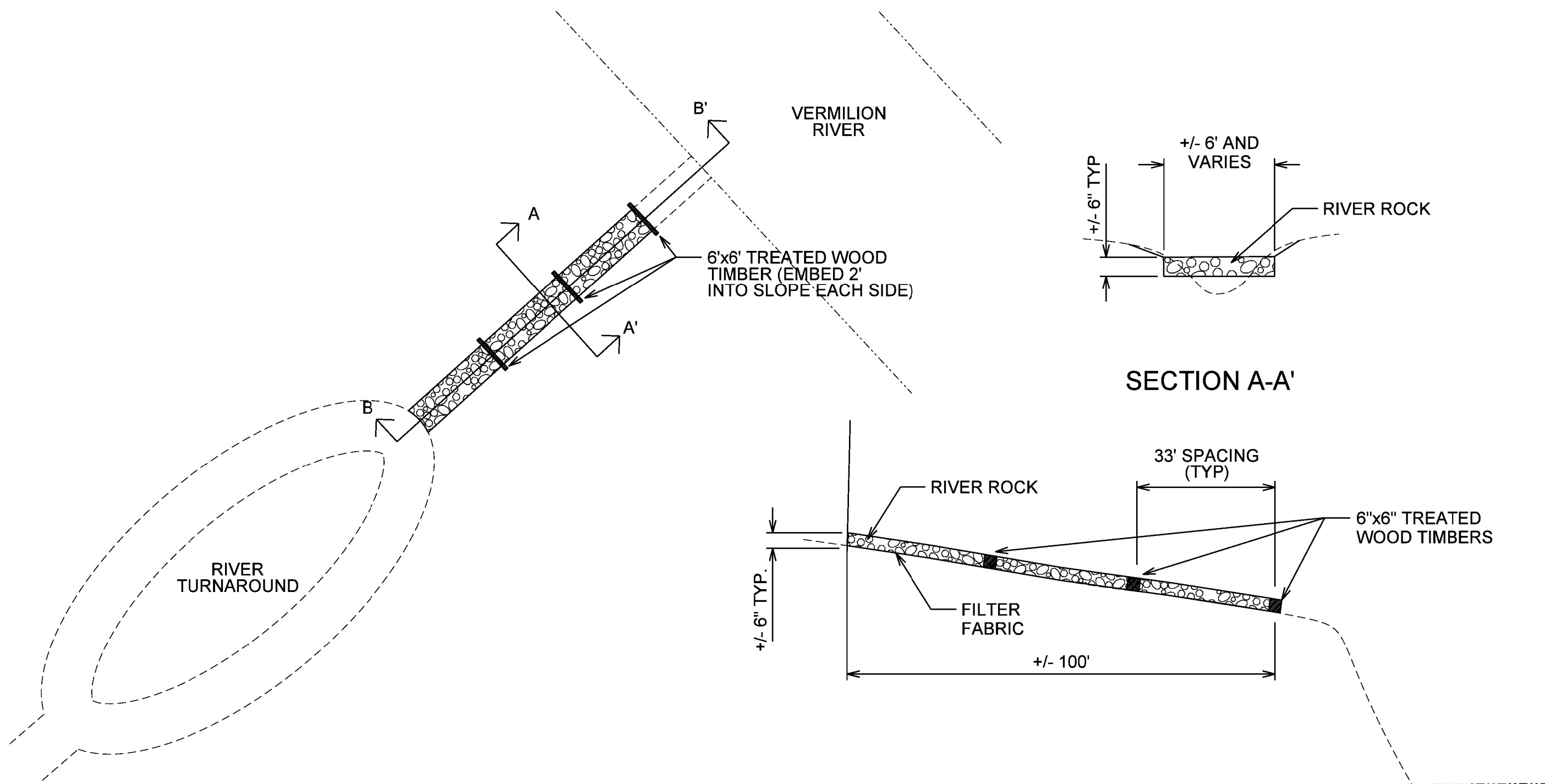


Legend

- Gravel to O&C
- Oil & Chip resurface
- Upgrade Existing Gravel Surface
- Upgrade Existing River Rock Surface on Ramp

Plan View - South Area

**Contract 46438
 MIDDLE FORK STATE PARK
 VERMILION COUNTY
 Section PARK ROADS 2017-06
 Sheet 07 of 08**



PLAN

SECTION A-A'

SECTION B-B'

FILE NAME =	USER NAME = #USER*	DESIGNED -	REVISED -	STATE OF ILLINOIS DEPARTMENT OF TRANSPORTATION	RIVER ROCK PLACEMENT DETAIL		F.A. RTE.	SECTION	COUNTY	TOTAL SHEETS	SHEET NO.	
#FILEL*		DRAWN -	REVISED -		SCALE:	SHEET 1 OF 1 SHEETS	STA.	TO STA.	PARK ROADS 2017-06	VERMILION	8	8
#MODELNAME*		CHECKED -	REVISED -						CONTRACT NO. 46438			
		DATE -	REVISED -						ILLINOIS FED. AID PROJECT			