

MODEL: Default
 FILE NAME: p:\p\hondrusc001\HDR_US_Centrol_01\Documents\11\DOT\DOT_Phs II_Spec_Various TO's_199-15\DOT_PTB_199-15_T012_Dixie_Hwy16.0_CAD_BIM6.2_WIP\6.2.3_CADD_Sheet\Roadway\Summary of Quantities

CODE NO.	DESCRIPTION	UNIT	TOTAL QUANTITY URBAN	0005 80% FED 20% STATE	0005 100% STATE	0021 80% FED 20% STATE
20101350	TREE PRUNING (OVER 10 INCH DIAMETER)	EACH	10	10		
20200100	EARTH EXCAVATION	CU YD	81 80	81 80	1	
20201200	REMOVAL AND DISPOSAL OF UNSUITABLE MATERIAL	CU YD	16	16		
21101615	TOPSOIL FURNISH AND PLACE, 4"	SQ YD	257	257		
25000750	MOWING	ACRE	3	3		
25200110	SODDING, SALT TOLERANT	SQ YD	257	257		
25200200	SUPPLEMENTAL WATERING	UNIT	0.3	0.3		
28000510	INLET FILTERS	EACH	46	46		
30300001	AGGREGATE SUBGRADE IMPROVEMENT	CU YD	16	16		
31101200	SUBBASE GRANULAR MATERIAL, TYPE B 4"	SQ YD	480	480		
40600290	BITUMINOUS MATERIALS (TACK COAT)	POUND	17,619	17,619		
40600370	LONGITUDINAL JOINT SEALANT	FOOT	24,388	24,388		
40600400	MIXTURE FOR CRACKS, JOINTS, AND FLANGEWAYS	TON	69	69		
40600982	HOT-MIX ASPHALT SURFACE REMOVAL - BUTT JOINT	SQ YD	409	409		
40604062	HOT-MIX ASPHALT SURFACE COURSE, IL-9.5, MIX "D", N70	TON	3,289	3,289		
42001300	PROTECTIVE COAT	SQ YD	173	173		
42300400	PORTLAND CEMENT CONCRETE DRIVEWAY PAVEMENT, 8 INCH	SQ YD	11	11		
42400200	PORTLAND CEMENT CONCRETE SIDEWALK 5 INCH	SQ FT	4,665 4,628	4,665 4,628	1	
42400800	DETECTABLE WARNINGS	SQ FT	388	388		
44000155	HOT-MIX ASPHALT SURFACE REMOVAL, 1 1/2"	SQ YD	39,153	39,153		
44000500	COMBINATION CURB AND GUTTER REMOVAL	FOOT	998 981	998 981	1	
44000600	SIDEWALK REMOVAL	SQ FT	4,462 4,430	4,462 4,430	1	
44201823	CLASS D PATCHES, TYPE I, 15 INCH	SQ YD	15	15		
44201827	CLASS D PATCHES, TYPE II, 15 INCH	SQ YD	1,289	1,289		
44201831	CLASS D PATCHES, TYPE III, 15 INCH	SQ YD	310	310		
44201833	CLASS D PATCHES, TYPE IV, 15 INCH	SQ YD	1,537	1,537		

LEGEND

* - DENOTES SPECIALTY ITEM

CODE NO.	DESCRIPTION	UNIT	TOTAL QUANTITY URBAN	0005 80% FED 20% STATE	0005 100% STATE	0021 80% FED 20% STATE
48102100	AGGREGATE WEDGE SHOULDER, TYPE B	TON	110	110		
60265700	VALVE VAULTS TO BE ADJUSTED	EACH	6	6		
60266100	VALVE VAULTS TO BE RECONSTRUCTED	EACH	1	1		
60300305	FRAMES AND LIDS TO BE ADJUSTED	EACH	15	15		
60603800	COMBINATION CONCRETE CURB AND GUTTER, TYPE B-6.12	FOOT	983 966	983 966	1	
60604400	COMBINATION CONCRETE CURB AND GUTTER, TYPE B-6.18	FOOT	28	28		
* 63000001	STEEL PLATE BEAM GUARDRAIL, TYPE A, 6 FOOT POSTS	FOOT	112.5	112.5		
* 63100167	TRAFFIC BARRIER TERMINAL, TYPE 1 (SPECIAL) TANGENT	EACH	4	4		
63200310	GUARDRAIL REMOVAL	FOOT	262.5	262.5		
* 66900200	NON-SPECIAL WASTE DISPOSAL	CU YD	81 80	81 80	1	
* 66900530	SOIL DISPOSAL ANALYSIS	EACH	7	7		
* 66901001	REGULATED SUBSTANCES PRE-CONSTRUCTION PLAN	L SUM	1	1		
* 66901003	REGULATED SUBSTANCES FINAL CONSTRUCTION REPORT	L SUM	1	1		
* 66901006	REGULATED SUBSTANCES MONITORING	CAL DA	15	15		
67100100	MOBILIZATION	L SUM	1	1		
70102620	TRAFFIC CONTROL AND PROTECTION, STANDARD 701501	L SUM	1	1		
70102625	TRAFFIC CONTROL AND PROTECTION, STANDARD 701606	L SUM	1	1		
70102635	TRAFFIC CONTROL AND PROTECTION, STANDARD 701701	L SUM	1	1		
70102640	TRAFFIC CONTROL AND PROTECTION, STANDARD 701801	L SUM	1	1		
70107025	CHANGEABLE MESSAGE SIGN	CAL DA	180	180		
70300100	SHORT TERM PAVEMENT MARKING	FOOT	30,164	30,164		
70300150	SHORT TERM PAVEMENT MARKING REMOVAL	SQ FT	12,103	12,103		
70300211	TEMPORARY PAVEMENT MARKING LETTERS AND SYMBOLS - PAINT	SQ FT	123	123		
70300221	TEMPORARY PAVEMENT MARKING - LINE 4"- PAINT	FOOT	27,124	27,124		
70300241	TEMPORARY PAVEMENT MARKING - LINE 6"- PAINT	FOOT	1,909	1,909		
70300261	TEMPORARY PAVEMENT MARKING - LINE 12"- PAINT	FOOT	156	156		

USER NAME = RAZEVEDO	DESIGNED - NSA	REVISED -
DRAWN - RA	REVISIONS -	
PLOT SCALE = 200.0000' / in.	CHECKED - EN	REVISED -
PLOT DATE = 2/1/2023	DATE - 1/20/2023	REVISED -

**STATE OF ILLINOIS
DEPARTMENT OF TRANSPORTATION**

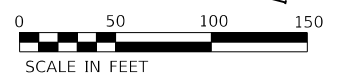
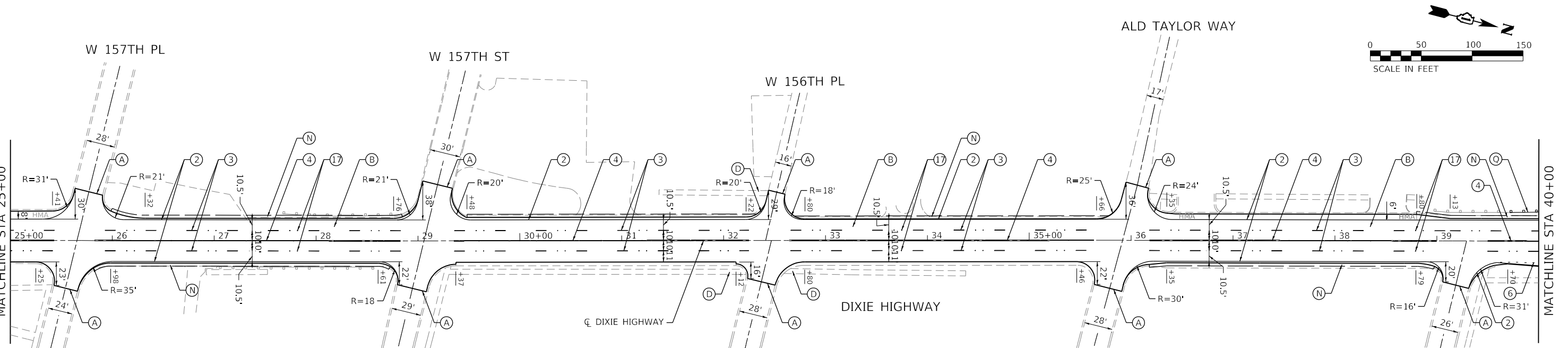
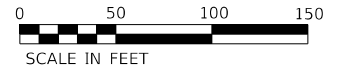
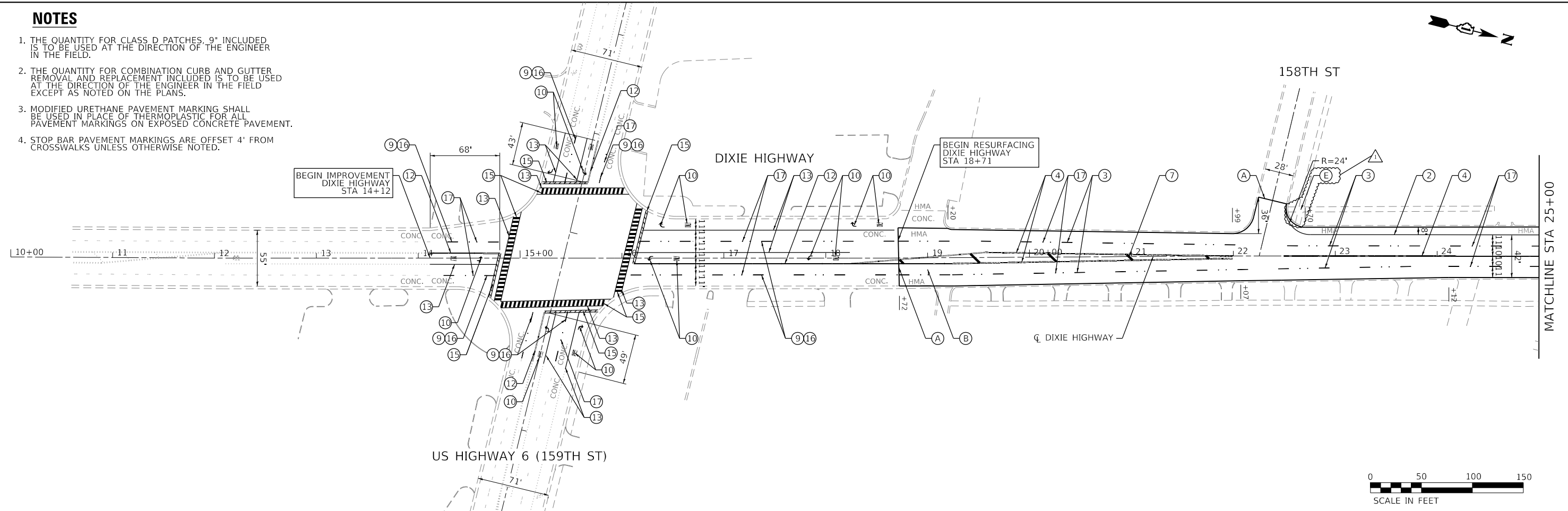
**SUMMARY OF QUANTITIES
DIXIE HIGHWAY (149TH ST. TO US 6/159TH ST.)**

SCALE: N.T.S. SHEET 1 OF 2 SHEETS STA. TO STA.

F.A.P. RTE.	SECTION	COUNTY	TOTAL SHEETS	SHEET NO.
370	2021-046-R5	COOK	39	3
CONTRACT NO. 62N73			REVISED SHEET 4/10/2023	
ILLINOIS		FED. AID PROJECT		

NOTES

1. THE QUANTITY FOR CLASS D PATCHES, 9" INCLUDED IS TO BE USED AT THE DIRECTION OF THE ENGINEER IN THE FIELD.
2. THE QUANTITY FOR COMBINATION CURB AND GUTTER REMOVAL AND REPLACEMENT INCLUDED IS TO BE USED AT THE DIRECTION OF THE ENGINEER IN THE FIELD EXCEPT AS NOTED ON THE PLANS.
3. MODIFIED URETHANE PAVEMENT MARKING SHALL BE USED IN PLACE OF THERMOPLASTIC FOR ALL PAVEMENT MARKINGS ON EXPOSED CONCRETE PAVEMENT.
4. STOP BAR PAVEMENT MARKINGS ARE OFFSET 4' FROM CROSSWALKS UNLESS OTHERWISE NOTED.



PAVEMENT MARKING LEGEND

- | | |
|---|--|
| ① THERMOPLASTIC PAVEMENT MARKING - LETTERS AND SYMBOLS | ⑩ MODIFIED URETHANE PAVEMENT MARKING - LETTERS AND SYMBOLS |
| ② THERMOPLASTIC PAVEMENT MARKING - LINE 4" (SOLID WHITE) | ⑪ MODIFIED URETHANE PAVEMENT MARKING - LINE 4" (SOLID WHITE) |
| ③ THERMOPLASTIC PAVEMENT MARKING - LINE 4" (10' DASH 30' SKIP, WHITE) | ⑫ MODIFIED URETHANE PAVEMENT MARKING - LINE 4" (DOUBLE SOLID YELLOW) |
| ④ THERMOPLASTIC PAVEMENT MARKING - LINE 4" (DOUBLE SOLID YELLOW) | ⑬ MODIFIED URETHANE PAVEMENT MARKING - LINE 6" (SOLID WHITE) |
| ⑤ THERMOPLASTIC PAVEMENT MARKING - LINE 6" (SOLID WHITE) | ⑭ MODIFIED URETHANE PAVEMENT MARKING - LINE 12" (SOLID WHITE) |
| ⑥ THERMOPLASTIC PAVEMENT MARKING - LINE 6" (2' DASH 6' SKIP, WHITE) | ⑮ MODIFIED URETHANE PAVEMENT MARKING - LINE 24" (SOLID WHITE) |
| ⑦ THERMOPLASTIC PAVEMENT MARKING - LINE 12" (DIAGONAL, SOLID YELLOW) | ⑯ GROOVING FOR RECESSED PAVEMENT MARKING 8" |
| ⑧ THERMOPLASTIC PAVEMENT MARKING - LINE 24" (SOLID WHITE) | ⑰ RAISED REFLECTIVE PAVEMENT MARKER |
| ⑨ PREFORMED PLASTIC PAVEMENT MARKING, TYPE B - LINE 7" (4" WHITE OVER 7" BLACK) (10' DASH 30' SKIP) | |

ROADWAY LEGEND

- | | |
|--|--|
| (A) HOT-MIX ASPHALT SURFACE REMOVAL - BUTT JOINT, 4.5' | (L) CLASS D PATCHING, TYPE IV, 15" |
| (B) HOT-MIX ASPHALT SURFACE REMOVAL, 1 1/2" HOT-MIX ASPHALT SURFACE COURSE, MIX "D", IL-9.5, N70, 1 1/2" | (M) PORTLAND CEMENT SIDEWALK 5 INCH |
| (C) PROP. ADA RAMP DETAILS, SEE DETAIL DESIGN | (N) COMBINATION CONCRETE CURB AND GUTTER, TYPE B-6.12 |
| (D) PROP. ADA RAMP DETAILS, SEE PD-01B | (O) COMBINATION CONCRETE CURB AND GUTTER, TYPE B-6.18 |
| (E) PROP. ADA RAMP DETAILS, SEE PD-03A | (P) COMBINATION CONCRETE CURB AND GUTTER REMOVAL |
| (F) PROP. ADA RAMP DETAILS, SEE PD-04A | (Q) AGGREGATE WEDGE SHOULDER, TYPE B |
| (G) PROP. ADA RAMP DETAILS, SEE PD-06A | (R) CORRUGATED MEDIAN REMOVAL |
| (H) AGGREGATE SUBGRADE IMPROVEMENT | (S) STEEL PLATE BEAM GUARDRAIL, TYPE A, 6 FOOT POSTS |
| | (T) TRAFFIC BARRIER TERMINAL, TYPE 1 (SPECIAL) TANGENT |

REVISED SHEET 4/10/2023

<p>HDR ENGINEERING, INC. 9450 W. BRYN MAWR AVE. ROSEMONT, IL 60018</p>	USER NAME = RAZEVEDO	DESIGNED - NSA	REVISED - 04/04/2023	<p>STATE OF ILLINOIS DEPARTMENT OF TRANSPORTATION</p>	<p>ROADWAY AND PAVEMENT MARKING PLANS DIXIE HIGHWAY (149TH ST. TO US 6/159TH ST.)</p>	F.A.P. RTE. = 370	SECTION = 2021-046-R5	COUNTY = COOK	TOTAL SHEETS = 39	SHEET NO. = 7	
	PLOT SCALE = 100,0000' / in.	CHECKED - EN	REVISED -			CONTRACT NO. 62N73					
	PLOT DATE = 4/4/2023	DATE = 1/20/2023	REVISED -			ILLINOIS FED. AID PROJECT					
						SCALE: 1"=50'	SHEET 1 OF 3 SHEETS	STA. 14+12 TO STA. 40+00			