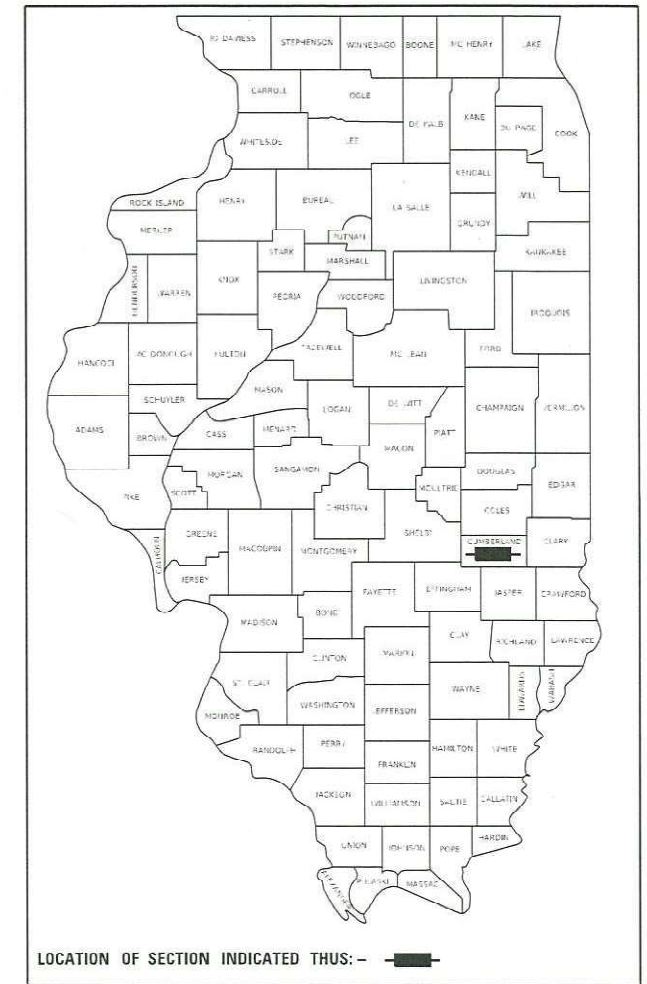


STATE OF ILLINOIS  
DEPARTMENT OF TRANSPORTATION

| F.A.I. RTE. | SECTION                | COUNTY     | TOTAL SHEETS       | SHEET NO. |
|-------------|------------------------|------------|--------------------|-----------|
| 70          | D7 TREE REMOVAL 2023-3 | CUMBERLAND | 23                 | 1         |
|             |                        | ILLINOIS   | CONTRACT NO. 74B69 |           |

D-97-012-23



FOR INDEX OF SHEETS, SEE SHEET NO. 2

STATION EQUATION

FAI ROUTE 70

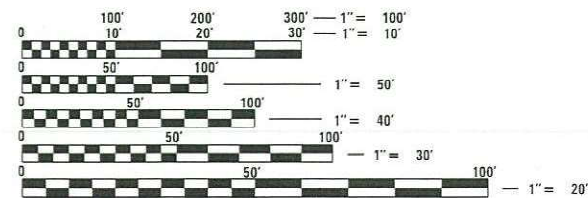
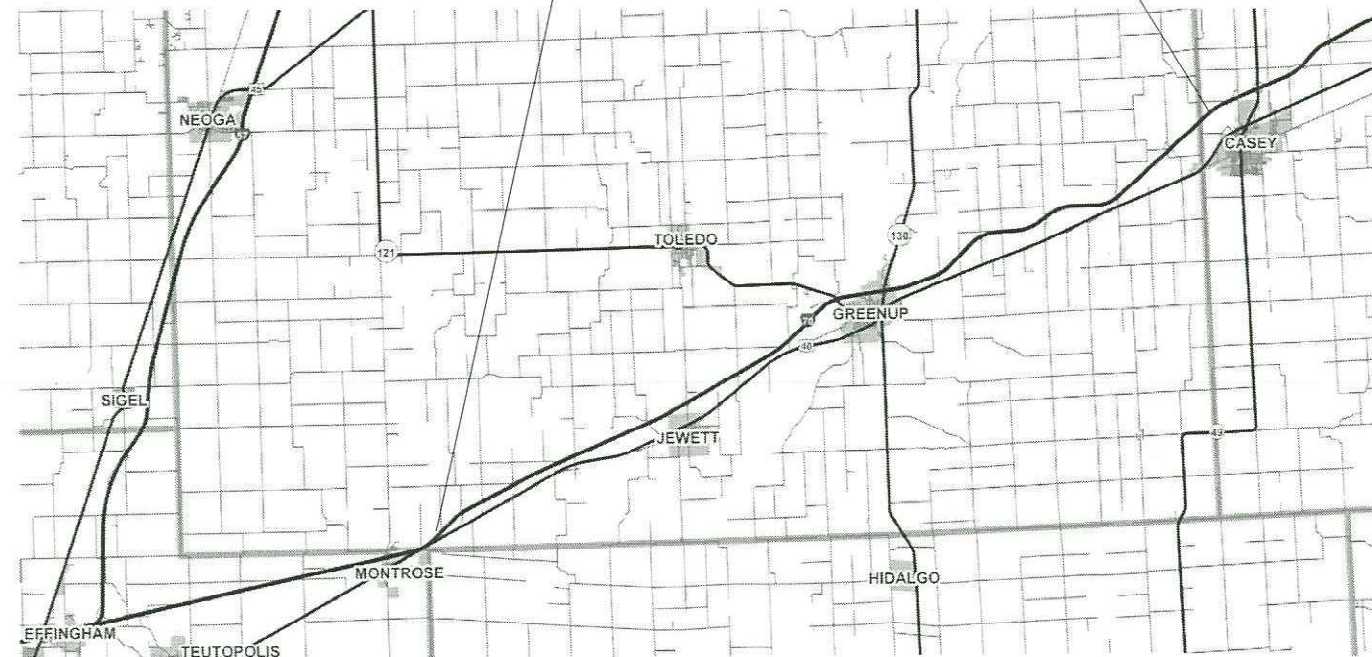
STATION 573+53 BK = 80+00 AH

PROPOSED  
HIGHWAY PLANS

FAI ROUTE 70 (I-70)  
SECTION D7 TREE REMOVAL 2023-3  
TREE REMOVAL  
CUMBERLAND COUNTY

C-97-013-23

FAI ROUTE 70 (I-70) WESTBOUND  
STATION 155+00 TO STATION 653+57



FULL SIZE PLANS HAVE BEEN PREPARED USING STANDARD ENGINEERING SCALES. REDUCED SIZED PLANS WILL NOT CONFORM TO STANDARD SCALES. IN MAKING MEASUREMENTS ON REDUCED PLANS, THE ABOVE SCALES MAY BE USED.

J.U.L.I.E.  
JOINT UTILITY LOCATION INFORMATION FOR EXCAVATORS  
1-800-892-0123  
OR 811

PROJECT ENGINEER: BRIAN LEWIS  
PROJECT MANAGER: MYRA OLTMAN

CONTRACT NO. 74B69

GROSS LENGTH = 108,620 FT. = 20.57 MILE  
NET LENGTH = 108,620 FT. = 20.57 MILE

STATE OF ILLINOIS  
DEPARTMENT OF TRANSPORTATION

SUBMITTED JANUARY 30<sup>20</sup> 23  
Jeffrey P. Myrka  
REGIONAL ENGINEER

March 24, 2023 [Signature]  
ENGINEER OF DESIGN AND ENVIRONMENT

March 24, 2023 [Signature]  
DIRECTOR OF HIGHWAYS PROJECT IMPLEMENTATION

PRINTED BY THE AUTHORITY  
OF THE STATE OF ILLINOIS

**GENERAL NOTES**

THIS PROJECT IS LOCATED ON FAI ROUTE 70 (WESTBOUND) IN CUMBERLAND COUNTY. THE WORK BEGINS AT THE EFFINGHAM COUNTY LINE AND EXTENDS EAST TO THE CLARK COUNTY LINE. THE WORK INCLUDED IN SECTION D7 TREE REMOVAL 2023-3 CONSISTS OF DEAD TREE REMOVAL, TRAFFIC CONTROL AND ALL OTHER WORK TO COMPLETE THE SECTION.

THE TREE REMOVAL LOCATIONS ON THE PLANS ARE APPROXIMATE. THE RESIDENT ENGINEER WILL DETERMINE THE EXACT LOCATIONS.

THE CONTRACTOR SHALL NOTIFY THE DISTRICT 7 RESIDENT ENGINEER THIRTY DAYS PRIOR TO THE START OF THE PROJECT.

ALL TREES CUT DOWN SHALL BE REMOVED FROM STATE RIGHT OF WAY AND DISPOSED OF ACCORDING TO THE "STANDARD SPECIFICATIONS FOR ROAD AND BRIDGE CONSTRUCTION" AND THE CONTRACT SPECIAL PROVISIONS.

BECAUSE OF ENVIRONMENTAL RESTRICTIONS NO TREES SHOWN ON THE FAI ROUTE 70 PLAN MAY BE REMOVED IN THE CROSS HATCHED AREA ON THE PLANS. THE RESIDENT ENGINEER MUST CONSULT WITH THE DISTRICT 7 ENVIRONMENTAL COORDINATOR FOR ANY ADDITIONAL TREE REMOVAL OTHER THAN LISTED ON THE PLANS.

| FAI ROUTE 70 WESTBOUND                |      |       |
|---------------------------------------|------|-------|
| TREE REMOVAL (6 TO 15 UNITS DIAMETER) | 2400 | UNITS |
| TREE REMOVAL (OVER 15 UNITS DIAMETER) | 1200 | UNITS |

**INDEX OF SHEETS**

| SHEET NO. |   |
|-----------|---|
| 1         | COVER SHEET                                       |
| 2         | GENERAL NOTES, INDEX OF SHEETS, HIGHWAY STANDARDS |
| 3         | SUMMARY OF QUANTITIES                             |
| 4-23      | TREE REMOVAL PLAN SHEETS - FAI 70                 |

THE FOLLOWING STANDARDS ARE A PART OF THESE PLANS AND ARE INCLUDED FOLLOWING THE LAST NUMBERED SHEET OF THE PLANS.

|             |   |
|-------------|---|
| 000001 - 08 | STANDARD SYMBOLS, ABBREVIATIONS, AND PATTERNS               |
| 701101 - 05 | OFF-ROAD OPERATIONS, MULTI-LANE, 15'-24" FROM PAVEMENT EDGE |
| 701106 - 02 | OFF-ROAD OPERATIONS, MULTI-LANE, MORE THAN 15' AWAY         |
| 701426 - 09 | LANE CLOSURE, MULTI-LANE, INTERMITTENT OR MOVING OPERATIONS |
| 701901 - 08 | TRAFFIC CONTROL DEVICES                                     |
| 001006      | DECIMAL OF AN INCH AND OF A FOOT                            |

REV. - MS

MODEL: MODELNAME\$  
FILE NAME: TITLE\$

|                        |            |           |   |   |                             |                        |            |              |           |         |
|------------------------|------------|-----------|---|---|-----------------------------|------------------------|------------|--------------|-----------|---------|
| USER NAME = \$USER\$   | DESIGNED - | REVISED - | <b>STATE OF ILLINOIS<br/>DEPARTMENT OF TRANSPORTATION</b> | <b>GENERAL NOTES, INDEX OF SHEETS<br/>AND HIGHWAY STANDARDS</b> | F.A.I. RTE.                 | SECTION                | COUNTY     | TOTAL SHEETS | SHEET NO. |         |
|                        | DRAWN -    | REVISED - |   |   | 70                          | D7 TREE REMOVAL 2023-3 | CUMBERLAND | 23           | 2         |         |
| PLOT SCALE = \$SCALE\$ | CHECKED -  | REVISED - |   |   | CONTRACT NO. 74B69          |                        |            |              |           |         |
| PLOT DATE = \$DATE\$   | DATE -     | REVISED - |   |   | ILLINOIS   FED. AID PROJECT |                        |            |              |           |         |
|                        |            |           |   |   | SCALE:                      | SHEET                  | OF         | SHEETS       | STA.      | TO STA. |





| PLAN SHEET LEGEND                          |             |
|--|-------------|
| SINGLE TREE REMOVAL                        | X           |
| AREA OF TREE REMOVAL                       | X ——— X     |
| AREA OF DEAD TREES TO REMAIN IN PLACE      | (X) ——— (X) |
| PROTECTIVE AREA<br>NO TREE REMOVAL ALLOWED |             |

STATION EQUATION:  
 STA. 419+05.34 @ T.R. 68  
 = STA. 91+35.20 @ FAI 70

MODEL: Default  
 FILE: \\na161c-pw\ultra-cw-bead\p\com\PIV\DOT\Documents\DOT Office\Dir\ref 7\Project\74869\CADD\DATA\CAD\Sheet\74869-sh-1a.dwg

|                             |            |           |
|-----------------------------|------------|-----------|
| USER NAME = Mona.Steffen    | DESIGNED - | REVISED - |
|                             | DRAWN -    | REVISED - |
| PLOT SCALE = 200,000' / in. | CHECKED -  | REVISED - |
| PLOT DATE = 1/23/2023       | DATE -     | REVISED - |


**STATE OF ILLINOIS  
 DEPARTMENT OF TRANSPORTATION**

**TREE LOCATION  
 FAI ROUTE 70 PLAN SHEETS**

SHEET OF SHEETS STA. 35+00 TO STA. 95+00

| F.A.I. RTE.               | SECTION                | COUNTY     | TOTAL SHEETS | SHEET NO. |
|---------------------------|------------------------|------------|--------------|-----------|
| 70                        | D7 TREE REMOVAL 2023-3 | CUMBERLAND | 23           | 4         |
| CONTRACT NO. 74869        |                        |            |              |           |
| ILLINOIS FED. AID PROJECT |                        |            |              |           |



| PLAN SHEET LEGEND                          |   |
|--|---|
| SINGLE TREE REMOVAL                        | X   |
| AREA OF TREE REMOVAL                       | X ——— X   |
| AREA OF DEAD TREES TO REMAIN IN PLACE      | (X) ——— (X)   |
| PROTECTIVE AREA<br>NO TREE REMOVAL ALLOWED |  |

MODEL NUMBER: N/A  
FILE NAME: 74B69

|                       |            |           |
|-----------------------|------------|-----------|
| USER NAME = \$USERS   | DESIGNED - | REVISED - |
|                       | DRAWN -    | REVISED - |
| PLOT SCALE = \$SCALES | CHECKED -  | REVISED - |
| PLOT DATE = \$DATES   | DATE -     | REVISED - |

**STATE OF ILLINOIS  
DEPARTMENT OF TRANSPORTATION**

**TREE LOCATION  
FAI ROUTE 70 PLAN SHEETS**

SCALE: SHEET OF SHEETS STA. 95+00 TO STA. 155+00

| F.A.I. RTE.               | SECTION                | COUNTY     | TOTAL SHEETS | SHEET NO. |
|---------------------------|------------------------|------------|--------------|-----------|
| 70                        | D7 TREE REMOVAL 2023-3 | CUMBERLAND | 23           | 5         |
| CONTRACT NO. 74B69        |                        |            |              |           |
| ILLINOIS FED. AID PROJECT |                        |            |              |           |



| PLAN SHEET LEGEND                       |             |
|---|-------------|
| SINGLE TREE REMOVAL                     | X           |
| AREA OF TREE REMOVAL                    | X ——— X     |
| AREA OF DEAD TREES TO REMAIN IN PLACE   | (X) ——— (X) |
| PROTECTIVE AREA NO TREE REMOVAL ALLOWED |             |



MODEL NUMBER: MAMTS  
FILE NUMBER: 0715

|                        |            |           |
|------------------------|------------|-----------|
| USER NAME = \$USERS    | DESIGNED - | REVISED - |
|                        | DRAWN -    | REVISED - |
| PLOT SCALE = \$SCALE\$ | CHECKED -  | REVISED - |
| PLOT DATE = \$DATE\$   | DATE -     | REVISED - |

**STATE OF ILLINOIS  
DEPARTMENT OF TRANSPORTATION**

**TREE LOCATION  
FAI ROUTE 70 PLAN SHEETS**

SCALE: SHEET OF SHEETS STA. 155+00 TO STA. 215+00

| F.A.I. RTE.               | SECTION                | COUNTY     | TOTAL SHEETS | SHEET NO. |
|---------------------------|------------------------|------------|--------------|-----------|
| 70                        | D7 TREE REMOVAL 2023-3 | CUMBERLAND | 23           | 6         |
| CONTRACT NO. 74B69        |                        |            |              |           |
| ILLINOIS FED. AID PROJECT |                        |            |              |           |



| PLAN SHEET LEGEND                          |             |
|--|-------------|
| SINGLE TREE REMOVAL                        | X           |
| AREA OF TREE REMOVAL                       | X ——— X     |
| AREA OF DEAD TREES TO REMAIN IN PLACE      | (X) ——— (X) |
| PROTECTIVE AREA<br>NO TREE REMOVAL ALLOWED |             |

MODEL NUMBER NAME  
FILE NUMBER SHEETS

|                        |            |           |
|------------------------|------------|-----------|
| USER NAME = \$USERS    | DESIGNED - | REVISED - |
| PLOT SCALE = \$SCALE\$ | DRAWN -    | REVISED - |
| PLOT DATE = \$DATE\$   | CHECKED -  | REVISED - |
|                        | DATE -     | REVISED - |

**STATE OF ILLINOIS  
DEPARTMENT OF TRANSPORTATION**

**TREE LOCATION  
FAI ROUTE 70 PLAN SHEETS**

SCALE: SHEET OF SHEETS STA. 215+00 TO STA. 275+00

| F.A.I. RTE.               | SECTION                | COUNTY     | TOTAL SHEETS | SHEET NO. |
|---------------------------|------------------------|------------|--------------|-----------|
| 70                        | D7 TREE REMOVAL 2023-3 | CUMBERLAND | 23           | 7         |
| CONTRACT NO. 74B69        |                        |            |              |           |
| ILLINOIS FED. AID PROJECT |                        |            |              |           |



| PLAN SHEET LEGEND                       |               |
|---|---------------|
| SINGLE TREE REMOVAL                     | X             |
| AREA OF TREE REMOVAL                    | X — X         |
| AREA OF DEAD TREES TO REMAIN IN PLACE   | (X) — (X)     |
| PROTECTIVE AREA NO TREE REMOVAL ALLOWED | [Hatched Box] |



MODEL NUMBER: MAMTS  
FILE NUMBER: 74B69

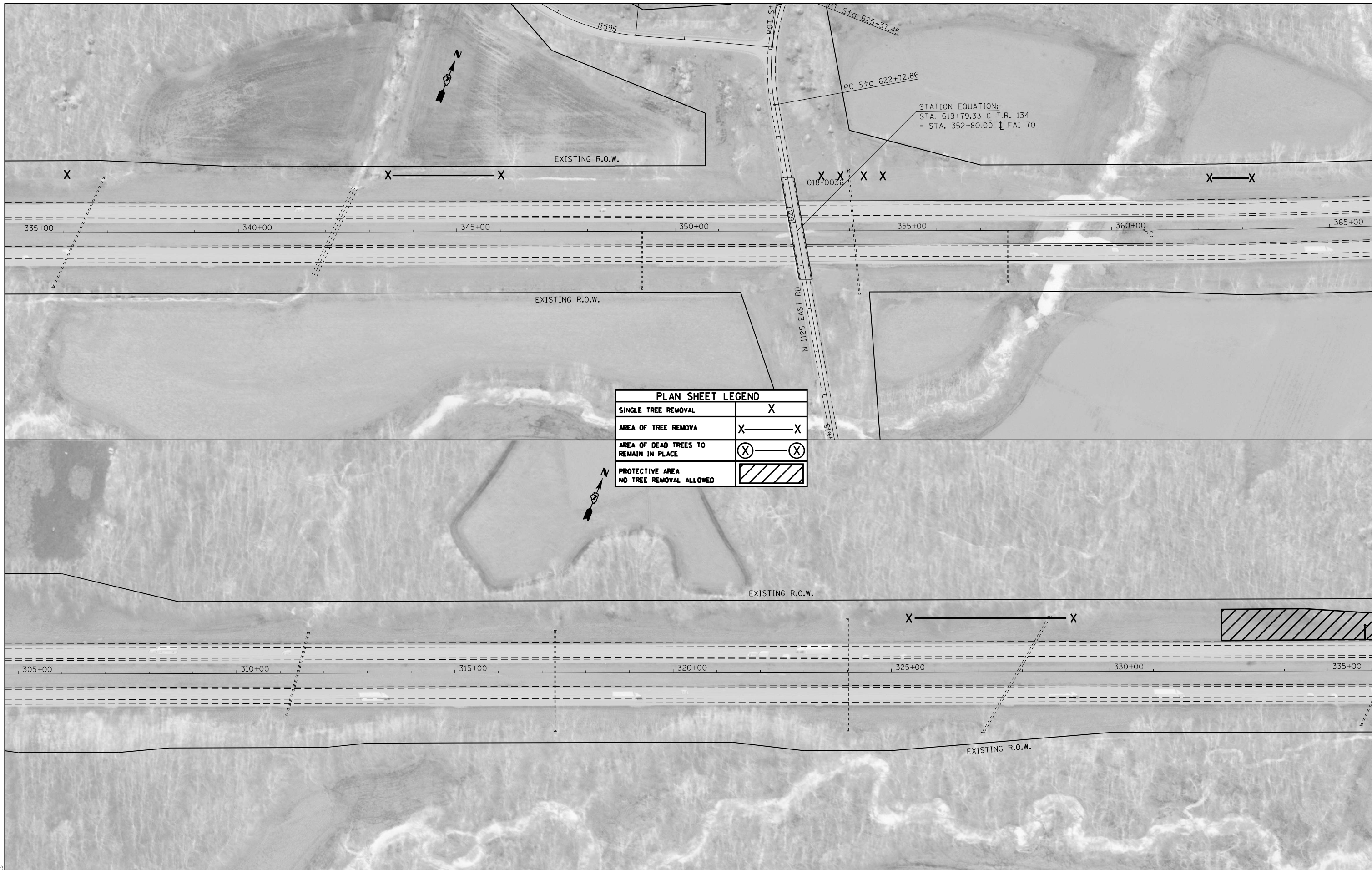
|                        |            |           |
|------------------------|------------|-----------|
| USER NAME = \$USERS    | DESIGNED - | REVISED - |
| PLOT SCALE = \$SCALE\$ | DRAWN -    | REVISED - |
| PLOT DATE = \$DATE\$   | CHECKED -  | REVISED - |
|                        | DATE -     | REVISED - |

**STATE OF ILLINOIS  
DEPARTMENT OF TRANSPORTATION**

|   |       |    |                            |
|---|-------|----|----------------------------|
| <b>TREE LOCATION<br/>FAI ROUTE 70 PLAN SHEETS</b> |       |    |                            |
| SCALE:  | SHEET | OF | SHEETS                     |
|   |       |    | STA. 275+00 TO STA. 335+00 |

| F.A.I. RTE.               | SECTION                | COUNTY     | TOTAL SHEETS | SHEET NO. |
|---------------------------|------------------------|------------|--------------|-----------|
| 70                        | D7 TREE REMOVAL 2023-3 | CUMBERLAND | 23           | 8         |
| CONTRACT NO. 74B69        |                        |            |              |           |
| ILLINOIS FED. AID PROJECT |                        |            |              |           |





| PLAN SHEET LEGEND                          |           |
|--|-----------|
| SINGLE TREE REMOVAL                        | X         |
| AREA OF TREE REMOVA                        | X — X     |
| AREA OF DEAD TREES TO REMAIN IN PLACE      | (X) — (X) |
| PROTECTIVE AREA<br>NO TREE REMOVAL ALLOWED |           |

STATION EQUATION:  
 STA. 619+79.33 @ T.R. 134  
 = STA. 352+80.00 @ FAI 70

MODEL: \\MODEL\MAMTS  
 FILE: \\MAMTS\STREETS

|                        |            |           |
|------------------------|------------|-----------|
| USER NAME = \$USERS    | DESIGNED - | REVISED - |
|                        | DRAWN -    | REVISED - |
| PLOT SCALE = \$SCALE\$ | CHECKED -  | REVISED - |
| PLOT DATE = \$DATE\$   | DATE -     | REVISED - |

**STATE OF ILLINOIS  
 DEPARTMENT OF TRANSPORTATION**

**TREE LOCATION  
 FAI ROUTE 70 PLAN SHEETS**

SCALE: SHEET OF SHEETS STA. 335+00 TO STA. 395+00

| F.A.I. RTE.               | SECTION                | COUNTY     | TOTAL SHEETS | SHEET NO. |
|---------------------------|------------------------|------------|--------------|-----------|
| 70                        | D7 TREE REMOVAL 2023-3 | CUMBERLAND | 23           | 9         |
| CONTRACT NO. 74B69        |                        |            |              |           |
| ILLINOIS FED. AID PROJECT |                        |            |              |           |



| PLAN SHEET LEGEND                       |               |
|---|---------------|
| SINGLE TREE REMOVAL                     | X             |
| AREA OF TREE REMOVAL                    | X---X         |
| AREA OF DEAD TREES TO REMAIN IN PLACE   | (X)           |
| PROTECTIVE AREA NO TREE REMOVAL ALLOWED | [Hatched Box] |

MODEL NUMBER  
FILE NUMBER

|                        |            |           |
|------------------------|------------|-----------|
| USER NAME = \$USERS    | DESIGNED - | REVISED - |
|                        | DRAWN -    | REVISED - |
| PLOT SCALE = \$SCALE\$ | CHECKED -  | REVISED - |
| PLOT DATE = \$DATE\$   | DATE -     | REVISED - |

**STATE OF ILLINOIS  
DEPARTMENT OF TRANSPORTATION**

**TREE LOCATION  
FAI ROUTE 70 PLAN SHEETS**

SCALE: SHEET OF SHEETS STA. 395+00 TO STA. 455+00

| F.A.I. RTE.               | SECTION                | COUNTY     | TOTAL SHEETS | SHEET NO. |
|---------------------------|------------------------|------------|--------------|-----------|
| 70                        | D7 TREE REMOVAL 2023-3 | CUMBERLAND | 23           | 10        |
| CONTRACT NO. 74B69        |                        |            |              |           |
| ILLINOIS FED. AID PROJECT |                        |            |              |           |





| PLAN SHEET LEGEND                          |             |
|--|-------------|
| SINGLE TREE REMOVAL                        | X           |
| AREA OF TREE REMOVAL                       | X ——— X     |
| AREA OF DEAD TREES TO REMAIN IN PLACE      | (X) ——— (X) |
| PROTECTIVE AREA<br>NO TREE REMOVAL ALLOWED |             |

MODEL: \\MODEL\MAMFS  
 FILE: \\MAMFS\STPLS

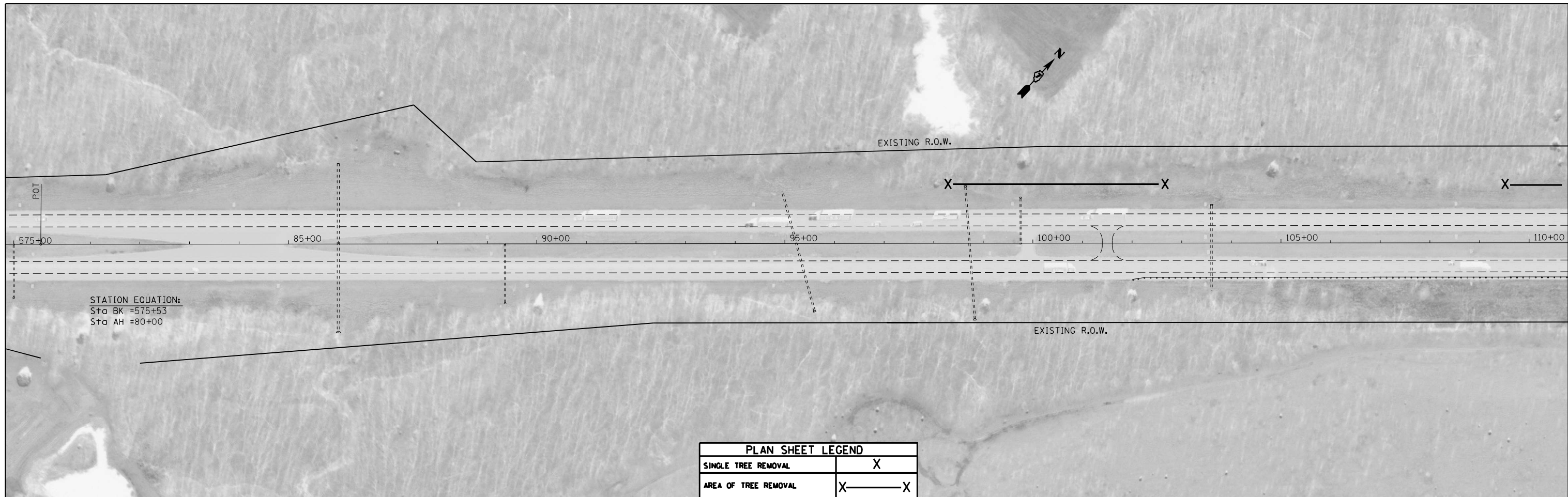
|                        |            |           |
|------------------------|------------|-----------|
| USER NAME = \$USERS    | DESIGNED - | REVISED - |
| PLOT SCALE = \$SCALE\$ | DRAWN -    | REVISED - |
| PLOT DATE = \$DATE\$   | CHECKED -  | REVISED - |
|                        | DATE -     | REVISED - |

**STATE OF ILLINOIS**  
**DEPARTMENT OF TRANSPORTATION**

**TREE LOCATION**  
**FAI ROUTE 70 PLAN SHEETS**

SCALE: SHEET OF SHEETS STA. 515+00 TO STA. 575+00

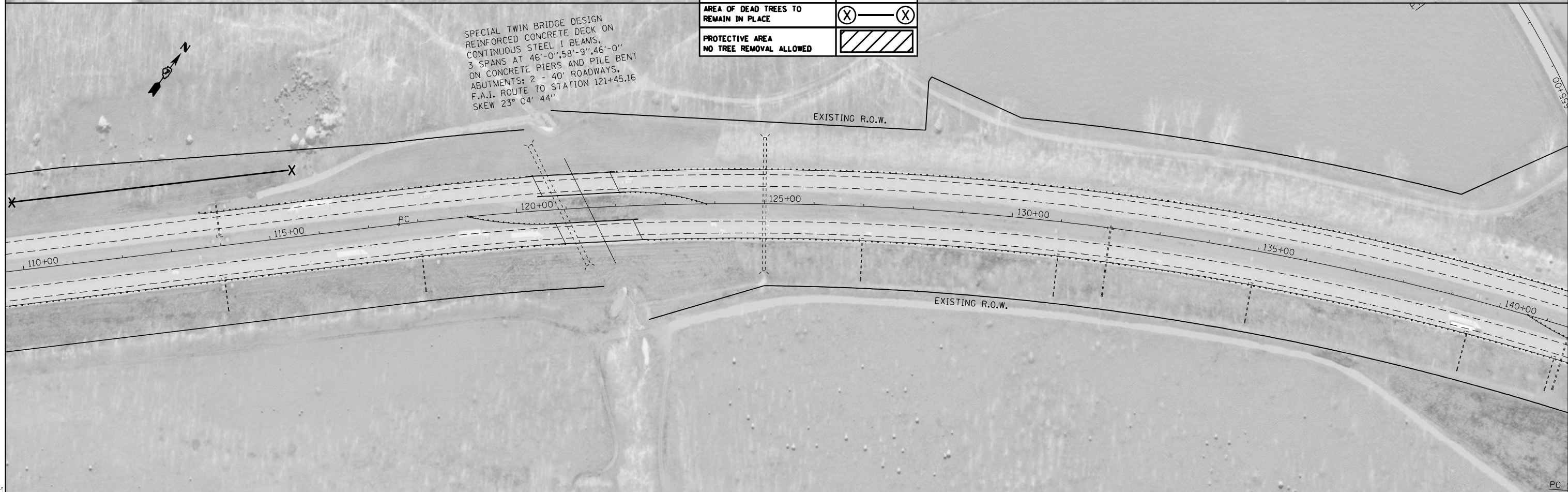
| F.A.I. RTE.               | SECTION                | COUNTY     | TOTAL SHEETS | SHEET NO. |
|---------------------------|------------------------|------------|--------------|-----------|
| 70                        | D7 TREE REMOVAL 2023-3 | CUMBERLAND | 23           | 12        |
| CONTRACT NO. 74B69        |                        |            |              |           |
| ILLINOIS FED. AID PROJECT |                        |            |              |           |



STATION EQUATION:  
Sta BK =575+53  
Sta AH =80+00

| PLAN SHEET LEGEND                          |           |
|--|-----------|
| SINGLE TREE REMOVAL                        | X         |
| AREA OF TREE REMOVAL                       | X — X     |
| AREA OF DEAD TREES TO REMAIN IN PLACE      | (X) — (X) |
| PROTECTIVE AREA<br>NO TREE REMOVAL ALLOWED |           |

SPECIAL TWIN BRIDGE DESIGN  
REINFORCED CONCRETE DECK ON  
CONTINUOUS STEEL I BEAMS.  
3 SPANS AT 46'-0", 58'-9", 46'-0"  
ON CONCRETE PIERS AND PILE BENT  
ABUTMENTS; 2 - 40' ROADWAYS.  
F.A.I. ROUTE 70 STATION 121+45.16  
SKEW 23° 04' 44"



MODEL: \\MOBILE\NAMES  
FILE: \\MOBILE\STREETS

|                        |            |           |
|------------------------|------------|-----------|
| USER NAME = \$USERS    | DESIGNED - | REVISED - |
|                        | DRAWN -    | REVISED - |
| PLOT SCALE = \$SCALE\$ | CHECKED -  | REVISED - |
| PLOT DATE = \$DATE\$   | DATE -     | REVISED - |

STATE OF ILLINOIS  
DEPARTMENT OF TRANSPORTATION

TREE LOCATION  
FAI ROUTE 70 PLAN SHEETS

SCALE: SHEET OF SHEETS STA. 575+00 TO STA. 140+00

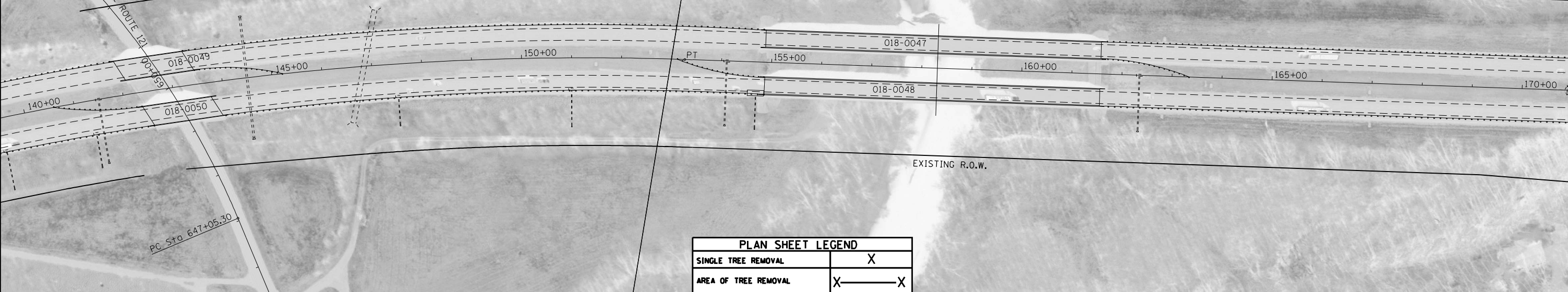
| F.A.I. RTE.               | SECTION                | COUNTY     | TOTAL SHEETS | SHEET NO. |
|---------------------------|------------------------|------------|--------------|-----------|
| 70                        | D7 TREE REMOVAL 2023-3 | CUMBERLAND | 23           | 13        |
| CONTRACT NO. 74B69        |                        |            |              |           |
| ILLINOIS FED. AID PROJECT |                        |            |              |           |

SPECIAL TWIN BRIDGE DESIGN  
 REINFORCED CONCRETE DECK ON  
 CONTINUOUS STEEL I BEAMS,  
 3 SPANS AT 39'-8", 51'-9", 41'-8" ON  
 CONCRETE PIERS AND PILE BENT  
 ABUTMENTS, 2 - 40' ROADWAYS,  
 F.A.I. ROUTE 70 STATION 142+93.20  
 SKEW 24° 37' 10"

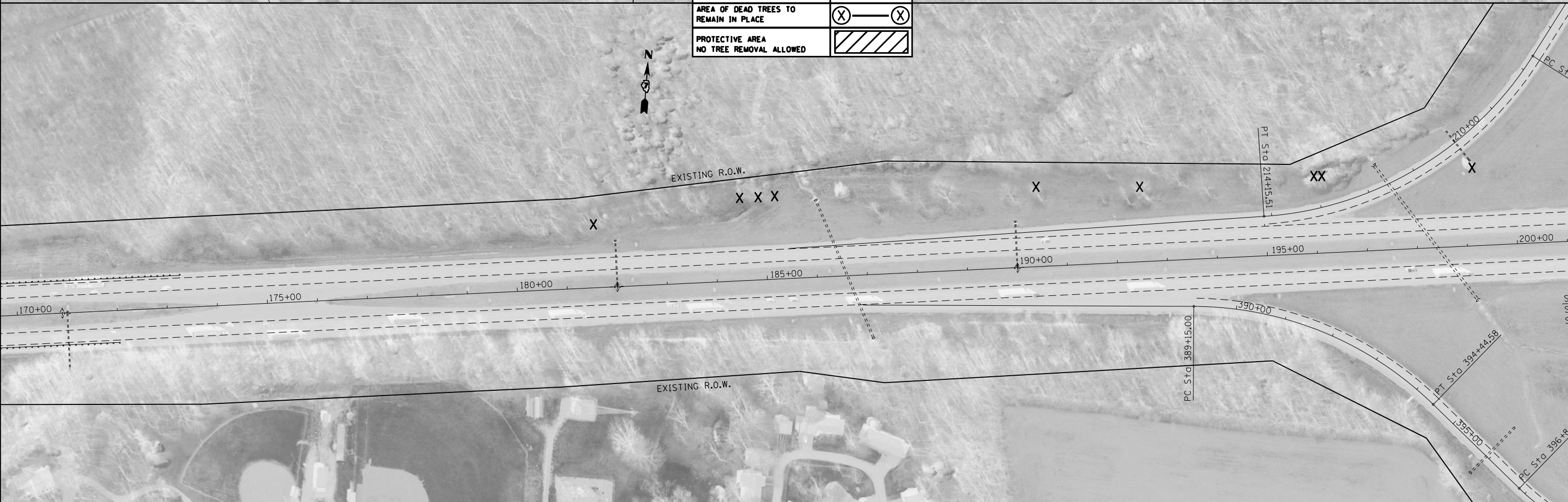


EXISTING R.O.W.

EMBARRAS RIVER



| PLAN SHEET LEGEND                       |               |
|---|---------------|
| SINGLE TREE REMOVAL                     | X             |
| AREA OF TREE REMOVAL                    | X — X         |
| AREA OF DEAD TREES TO REMAIN IN PLACE   | (X) — (X)     |
| PROTECTIVE AREA NO TREE REMOVAL ALLOWED | [Hatched Box] |



MODEL NUMBER NAMES  
 FILE NAMES, STYLES

|                       |            |           |
|-----------------------|------------|-----------|
| USER NAME = \$USERS   | DESIGNED - | REVISED - |
|                       | DRAWN -    | REVISED - |
| PLOT SCALE = \$SCALES | CHECKED -  | REVISED - |
| PLOT DATE = \$DATES   | DATE -     | REVISED - |

STATE OF ILLINOIS  
 DEPARTMENT OF TRANSPORTATION

TREE LOCATION  
 FAI ROUTE 70 PLAN SHEETS

SCALE: SHEET OF SHEETS STA. 140+00 TO STA. 200+00

| F.A.I. RTE.         | SECTION                | COUNTY             | TOTAL SHEETS     | SHEET NO. |
|---------------------|------------------------|--------------------|------------------|-----------|
| 70                  | D7 TREE REMOVAL 2023-3 | CUMBERLAND         | 23               | 14        |
| * FAI 70 & FAS 1707 |                        | CONTRACT NO. 74B69 |                  |           |
|                     |                        | ILLINOIS           | FED. AID PROJECT |           |



| PLAN SHEET LEGEND                       |             |
|---|-------------|
| SINGLE TREE REMOVAL                     | X           |
| AREA OF TREE REMOVAL                    | X ——— X     |
| AREA OF DEAD TREES TO REMAIN IN PLACE   | (X) ——— (X) |
| PROTECTIVE AREA NO TREE REMOVAL ALLOWED |             |



MODEL NUMBER: 11/15/2015  
FILE NAME: ST1515

|                       |            |           |
|-----------------------|------------|-----------|
| USER NAME = \$USERS   | DESIGNED - | REVISED - |
|                       | DRAWN -    | REVISED - |
| PLOT SCALE = \$SCALES | CHECKED -  | REVISED - |
| PLOT DATE = \$DATES   | DATE -     | REVISED - |


**STATE OF ILLINOIS  
DEPARTMENT OF TRANSPORTATION**

**TREE LOCATION  
FAI ROUTE 70 PLAN SHEETS**

SCALE: SHEET OF SHEETS STA. 200+00 TO STA. 260+00

| F.A.I. RTE.               | SECTION                | COUNTY     | TOTAL SHEETS | SHEET NO. |
|---------------------------|------------------------|------------|--------------|-----------|
| 70                        | D7 TREE REMOVAL 2023-3 | CUMBERLAND | 23           | 15        |
| CONTRACT NO. 74B69        |                        |            |              |           |
| ILLINOIS FED. AID PROJECT |                        |            |              |           |



| PLAN SHEET LEGEND                       |   |
|---|---|
| SINGLE TREE REMOVAL                     | X   |
| AREA OF TREE REMOVAL                    | X ——— X   |
| AREA OF DEAD TREES TO REMAIN IN PLACE   | (X) ——— (X)   |
| PROTECTIVE AREA NO TREE REMOVAL ALLOWED |  |

MODEL: \\MODEL\MAMTS  
 FILE NAME: 071515

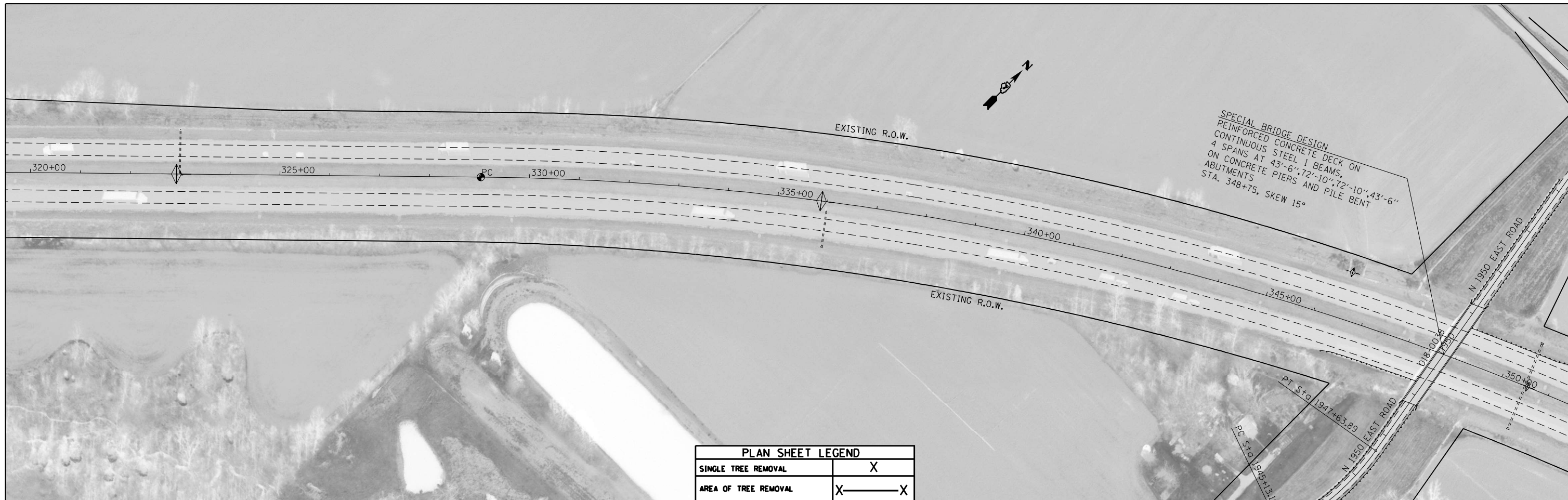
|                       |            |           |
|-----------------------|------------|-----------|
| USER NAME = \$USERS   | DESIGNED - | REVISED - |
| PLOT SCALE = \$SCALES | DRAWN -    | REVISED - |
| PLOT DATE = \$DATES   | CHECKED -  | REVISED - |
|                       | DATE -     | REVISED - |


**STATE OF ILLINOIS**  
**DEPARTMENT OF TRANSPORTATION**

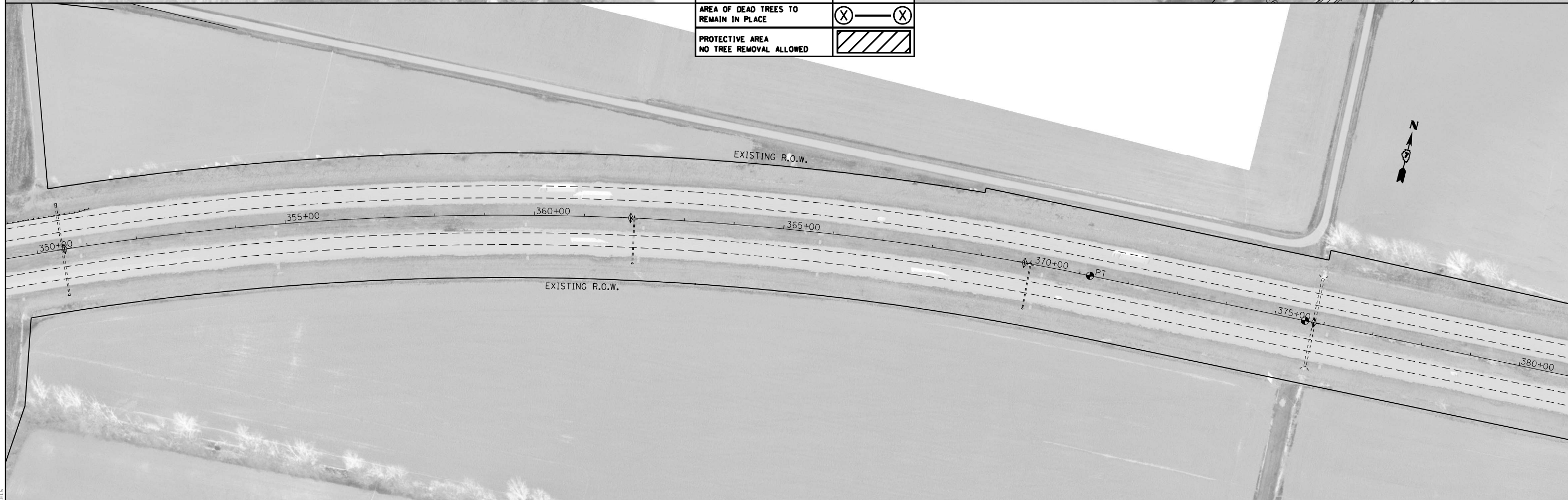
| TREE LOCATION            |       |    |                            |
|--------------------------|-------|----|----------------------------|
| FAI ROUTE 70 PLAN SHEETS |       |    |                            |
| SCALE:                   | SHEET | OF | SHEETS                     |
|                          |       |    | STA. 260+00 TO STA. 320+00 |

| F.A.I. RTE.               | SECTION                | COUNTY     | TOTAL SHEETS | SHEET NO. |
|---------------------------|------------------------|------------|--------------|-----------|
| 70                        | D7 TREE REMOVAL 2023-3 | CUMBERLAND | 23           | 16        |
| CONTRACT NO. 74B69        |                        |            |              |           |
| ILLINOIS FED. AID PROJECT |                        |            |              |           |





| PLAN SHEET LEGEND                          |   |
|--|---|
| SINGLE TREE REMOVAL                        | X   |
| AREA OF TREE REMOVAL                       | X ——— X   |
| AREA OF DEAD TREES TO REMAIN IN PLACE      | (X) ——— (X)   |
| PROTECTIVE AREA<br>NO TREE REMOVAL ALLOWED |  |



MODEL: \\MODEL\NAMITS  
FILE: NAMITS: STEELS

|                        |            |           |
|------------------------|------------|-----------|
| USER NAME = \$USERS    | DESIGNED - | REVISED - |
| PLOT SCALE = \$SCALE\$ | DRAWN -    | REVISED - |
| PLOT DATE = \$DATE\$   | CHECKED -  | REVISED - |
|                        | DATE -     | REVISED - |

**STATE OF ILLINOIS  
DEPARTMENT OF TRANSPORTATION**

| TREE LOCATION            |  |
|--------------------------|--|
| FAI ROUTE 70 PLAN SHEETS |  |
| SCALE:                   | SHEET OF SHEETS STA. 320+00 TO STA. 380+00 |

| F.A.I. RTE.               | SECTION                | COUNTY     | TOTAL SHEETS | SHEET NO. |
|---------------------------|------------------------|------------|--------------|-----------|
| 70                        | D7 TREE REMOVAL 2023-3 | CUMBERLAND | 23           | 17        |
| CONTRACT NO. 74B69        |                        |            |              |           |
| ILLINOIS FED. AID PROJECT |                        |            |              |           |



| PLAN SHEET LEGEND                          |             |
|--|-------------|
| SINGLE TREE REMOVAL                        | X           |
| AREA OF TREE REMOVAL                       | X ——— X     |
| AREA OF DEAD TREES TO REMAIN IN PLACE      | (X) ——— (X) |
| PROTECTIVE AREA<br>NO TREE REMOVAL ALLOWED |             |

SPECIAL BRIDGE DESIGN  
 REINFORCED CONCRETE DECK ON  
 CONTINUOUS STEEL I BEAMS  
 4 SPANS AT 41'-6", 73'-0", 73'-0", 41'-6"  
 ON CONCRETE PIERS AND PILE  
 BENT ABUTMENTS, 26'-0" ROADWAY  
 F.A.I. ROUTE TO STATION 434+42.94, SKEW 15°

CHECK THIS ROW FOR ACCURACY.

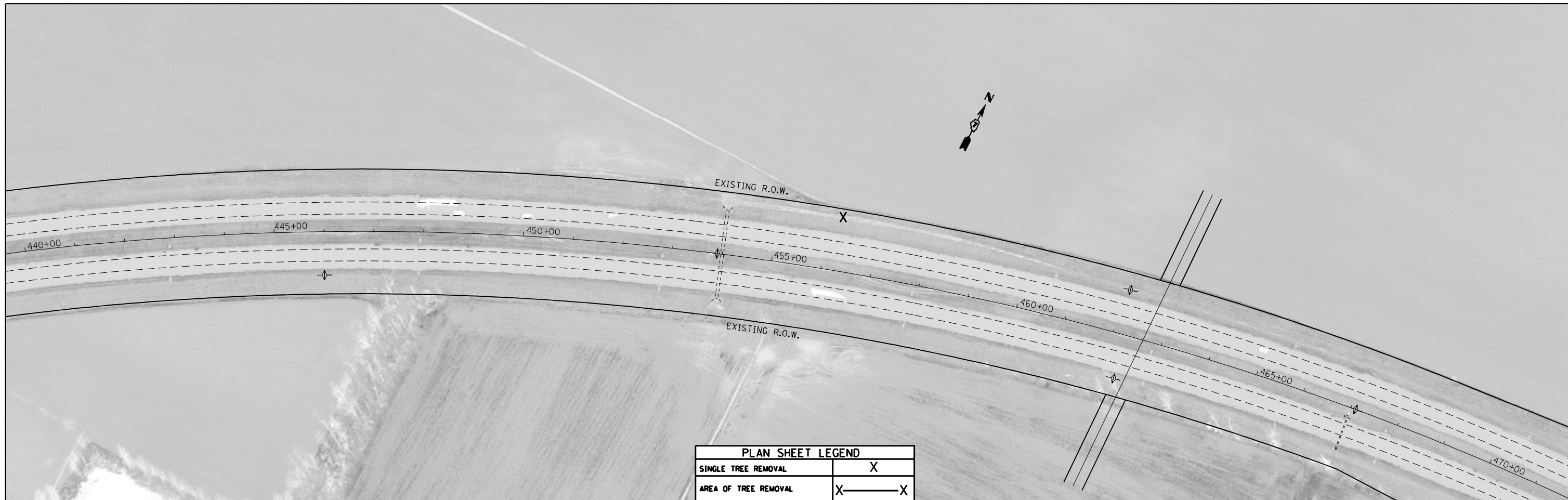
MODEL: 1400ELEM.MXMTS  
 FILE: 1400ELEM.SPELTS


|                        |            |           |
|------------------------|------------|-----------|
| USER NAME = \$USERS    | DESIGNED - | REVISED - |
| PLOT SCALE = \$SCALE\$ | DRAWN -    | REVISED - |
| PLOT DATE = \$DATE\$   | CHECKED -  | REVISED - |
|                        | DATE -     | REVISED - |

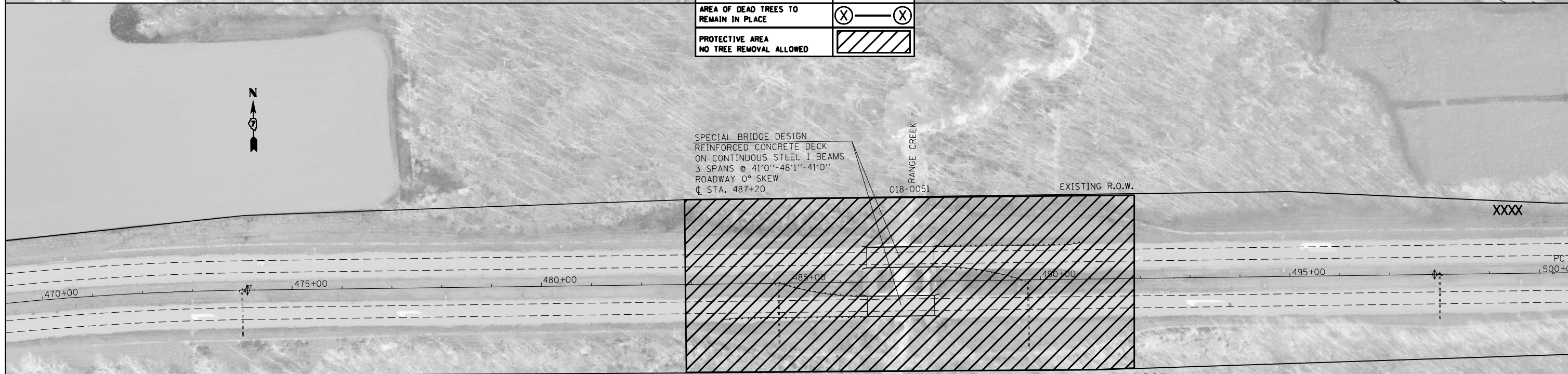
**STATE OF ILLINOIS  
 DEPARTMENT OF TRANSPORTATION**

| TREE LOCATION            |  |
|--------------------------|--|
| FAI ROUTE 70 PLAN SHEETS |  |
| SCALE:                   | SHEET OF SHEETS STA. 380+00 TO STA. 440+00 |

| F.A.I. RTE.               | SECTION                | COUNTY     | TOTAL SHEETS | SHEET NO. |
|---------------------------|------------------------|------------|--------------|-----------|
| 70                        | D7 TREE REMOVAL 2023-3 | CUMBERLAND | 23           | 18        |
| CONTRACT NO. 74B69        |                        |            |              |           |
| ILLINOIS FED. AID PROJECT |                        |            |              |           |



| PLAN SHEET LEGEND                          |   |
|--|---|
| SINGLE TREE REMOVAL                        | X   |
| AREA OF TREE REMOVAL                       | X ——— X   |
| AREA OF DEAD TREES TO REMAIN IN PLACE      | (X) ——— (X)   |
| PROTECTIVE AREA<br>NO TREE REMOVAL ALLOWED |  |



SPECIAL BRIDGE DESIGN  
 REINFORCED CONCRETE DECK  
 ON CONTINUOUS STEEL I BEAMS  
 3 SPANS @ 41'0" - 48'1" - 41'0"  
 ROADWAY 0° SKEW  
 ⌄ STA. 487+20

RANGE CREEK  
 018-0051

018-0052

MODEL NUMBER: N/A  
 FILE NAME: 74B69

|                        |            |           |
|------------------------|------------|-----------|
| USER NAME = \$USERS    | DESIGNED - | REVISED - |
| PLOT SCALE = \$SCALE\$ | DRAWN -    | REVISED - |
| PLOT DATE = \$DATE\$   | CHECKED -  | REVISED - |
|                        | DATE -     | REVISED - |

**STATE OF ILLINOIS  
 DEPARTMENT OF TRANSPORTATION**

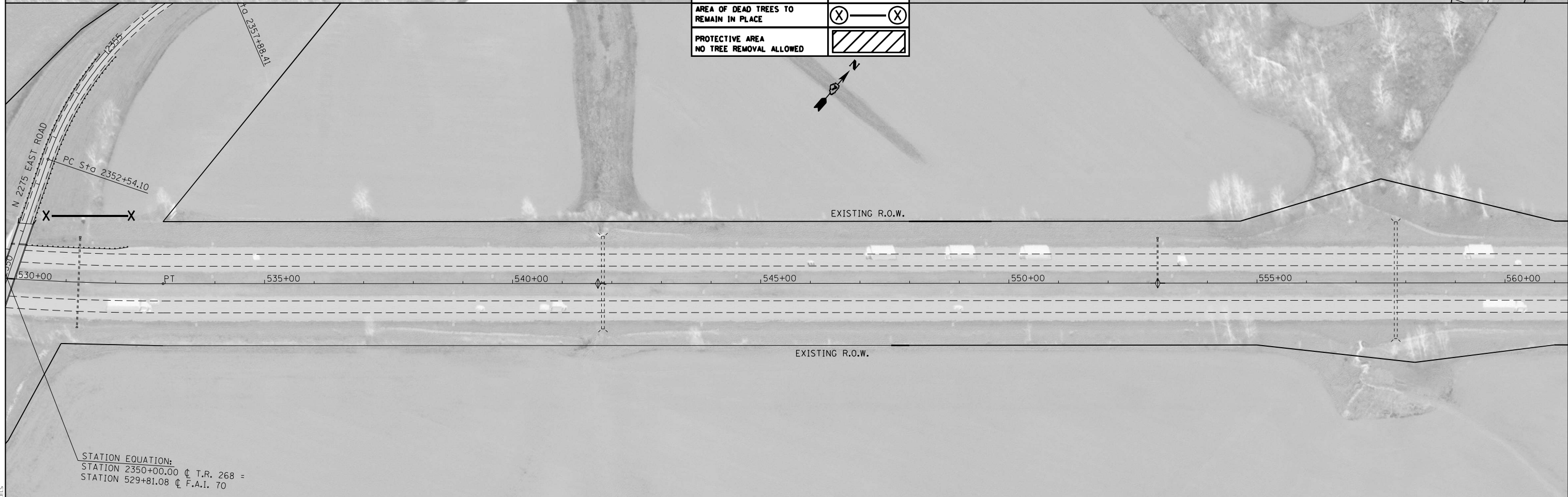
| TREE LOCATION            |  |
|--------------------------|--|
| FAI ROUTE 70 PLAN SHEETS |  |
| SCALE:                   | SHEET OF SHEETS STA. 440+00 TO STA. 500+00 |

| F.A.I. RTE.               | SECTION                | COUNTY     | TOTAL SHEETS | SHEET NO. |
|---------------------------|------------------------|------------|--------------|-----------|
| 70                        | D7 TREE REMOVAL 2023-3 | CUMBERLAND | 23           | 19        |
| CONTRACT NO. 74B69        |                        |            |              |           |
| ILLINOIS FED. AID PROJECT |                        |            |              |           |



SPECIAL BRIDGE DESIGN  
 REINFORCED CONCRETE DECK ON  
 CONTINUOUS STEEL I BEAMS  
 4 SPANS @ 41'-6", 73'-0", 41'-6"  
 ON CONCRETE PIERS AND PILE  
 BENT ABUTMENTS, 24'-0" ROADWAY  
 STATION 529+81.08. SKEW 15°

| PLAN SHEET LEGEND                          |             |
|--|-------------|
| SINGLE TREE REMOVAL                        | X           |
| AREA OF TREE REMOVAL                       | X ——— X     |
| AREA OF DEAD TREES TO REMAIN IN PLACE      | (X) ——— (X) |
| PROTECTIVE AREA<br>NO TREE REMOVAL ALLOWED |             |



STATION EQUATION:  
 STATION 2350+00.00 @ T.R. 268 =  
 STATION 529+81.08 @ F.A.I. 70

MODEL NUMBER  
 FILE NUMBER

|                       |            |           |
|-----------------------|------------|-----------|
| USER NAME = \$USERS   | DESIGNED - | REVISED - |
| PLOT SCALE = \$SCALES | DRAWN -    | REVISED - |
| PLOT DATE = \$DATES   | CHECKED -  | REVISED - |
|                       | DATE -     | REVISED - |

STATE OF ILLINOIS  
 DEPARTMENT OF TRANSPORTATION

| TREE LOCATION<br>FAI ROUTE 70 PLAN SHEETS |       |           |                            |
|---|-------|-----------|----------------------------|
| SCALE:                                    | SHEET | OF SHEETS | STA. 500+00 TO STA. 560+00 |

| F.A.I. RTE.               | SECTION                | COUNTY     | TOTAL SHEETS | SHEET NO. |
|---------------------------|------------------------|------------|--------------|-----------|
| 70                        | D7 TREE REMOVAL 2023-3 | CUMBERLAND | 23           | 20        |
| CONTRACT NO. 74B69        |                        |            |              |           |
| ILLINOIS FED. AID PROJECT |                        |            |              |           |



| PLAN SHEET LEGEND                       |             |
|---|-------------|
| SINGLE TREE REMOVAL                     | X           |
| AREA OF TREE REMOVAL                    | X ——— X     |
| AREA OF DEAD TREES TO REMAIN IN PLACE   | (X) ——— (X) |
| PROTECTIVE AREA NO TREE REMOVAL ALLOWED |             |

MODEL NUMBER NAME  
FILE NUMBER SHEETS

|                       |            |           |
|-----------------------|------------|-----------|
| USER NAME = \$USERS   | DESIGNED - | REVISED - |
|                       | DRAWN -    | REVISED - |
| PLOT SCALE = \$SCALES | CHECKED -  | REVISED - |
| PLOT DATE = \$DATES   | DATE -     | REVISED - |


**STATE OF ILLINOIS  
DEPARTMENT OF TRANSPORTATION**

**TREE LOCATION  
FAI ROUTE 70 PLAN SHEETS**

SCALE: SHEET OF SHEETS STA. 560+00 TO STA. 620+00

| F.A.I. RTE.               | SECTION                | COUNTY     | TOTAL SHEETS | SHEET NO. |
|---------------------------|------------------------|------------|--------------|-----------|
| 70                        | D7 TREE REMOVAL 2023-3 | CUMBERLAND | 23           | 21        |
| CONTRACT NO. 74B69        |                        |            |              |           |
| ILLINOIS FED. AID PROJECT |                        |            |              |           |



| PLAN SHEET LEGEND                       |   |
|---|---|
| SINGLE TREE REMOVAL                     | X   |
| AREA OF TREE REMOVAL                    | X ——— X   |
| AREA OF DEAD TREES TO REMAIN IN PLACE   | (X) ——— (X)   |
| PROTECTIVE AREA NO TREE REMOVAL ALLOWED |  |

MODEL NUMBER: N/A  
 FILE NAME: ST1215

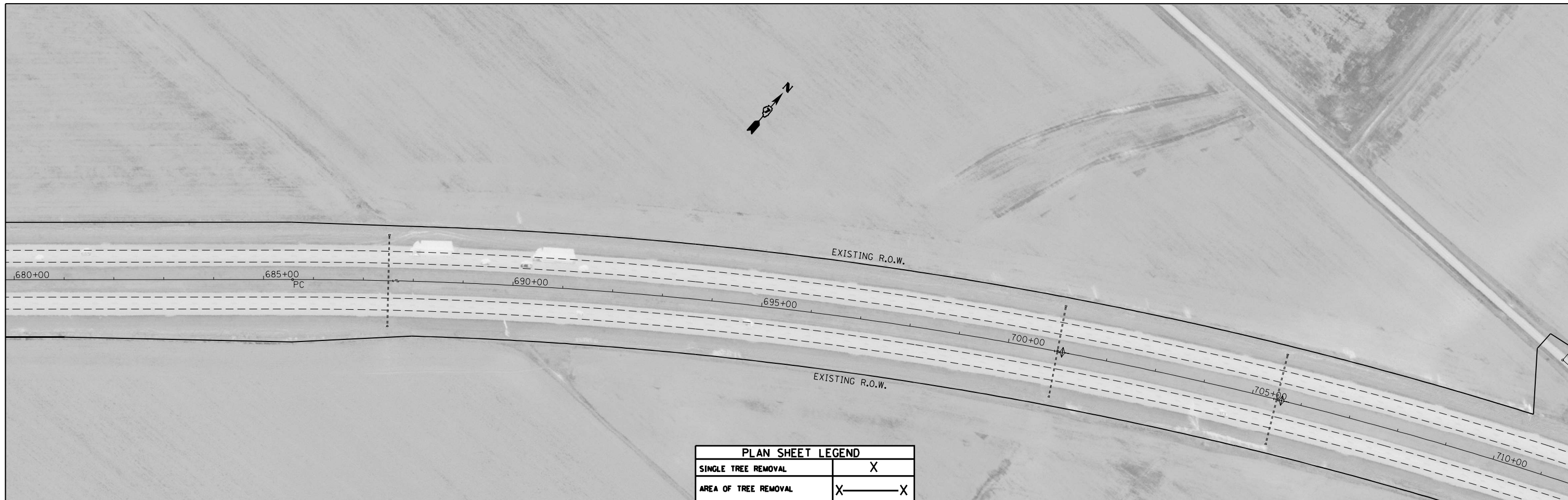
|                        |            |           |
|------------------------|------------|-----------|
| USER NAME = \$USERS    | DESIGNED - | REVISED - |
| PLOT SCALE = \$SCALE\$ | DRAWN -    | REVISED - |
| PLOT DATE = \$DATE\$   | CHECKED -  | REVISED - |
|                        | DATE -     | REVISED - |


**STATE OF ILLINOIS**  
**DEPARTMENT OF TRANSPORTATION**

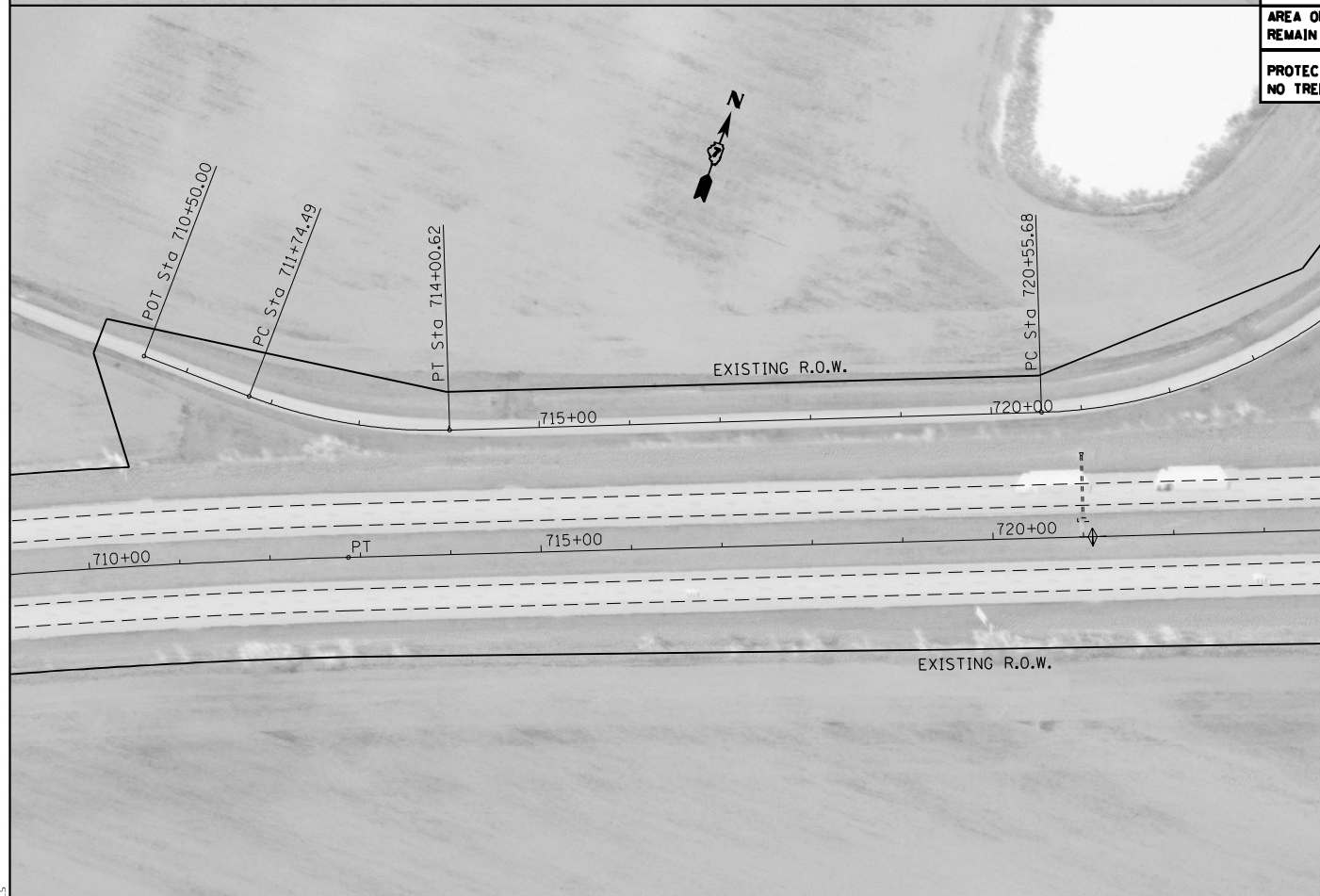
**TREE LOCATION**  
**FAI ROUTE 70 PLAN SHEETS**

SCALE: SHEET OF SHEETS STA. 620+00 TO STA. 680+00

| F.A.I. RTE.               | SECTION                | COUNTY     | TOTAL SHEETS | SHEET NO. |
|---------------------------|------------------------|------------|--------------|-----------|
| 70                        | D7 TREE REMOVAL 2023-3 | CUMBERLAND | 23           | 22        |
| CONTRACT NO. 74B69        |                        |            |              |           |
| ILLINOIS FED. AID PROJECT |                        |            |              |           |



| PLAN SHEET LEGEND                          |   |
|--|---|
| SINGLE TREE REMOVAL                        | X   |
| AREA OF TREE REMOVAL                       | X ——— X   |
| AREA OF DEAD TREES TO REMAIN IN PLACE      | (X) ——— (X)   |
| PROTECTIVE AREA<br>NO TREE REMOVAL ALLOWED |  |



MODEL NUMBER: 11/2015  
FILE NAME: 74B69

|                        |            |           |
|------------------------|------------|-----------|
| USER NAME = \$USERS    | DESIGNED - | REVISED - |
| PLOT SCALE = \$SCALE\$ | DRAWN -    | REVISED - |
| PLOT DATE = \$DATE\$   | CHECKED -  | REVISED - |
|                        | DATE -     | REVISED - |

**STATE OF ILLINOIS  
DEPARTMENT OF TRANSPORTATION**

| TREE LOCATION<br>FAI ROUTE 70 PLAN SHEETS |       |    |                            |
|---|-------|----|----------------------------|
| SCALE:                                    | SHEET | OF | SHEETS                     |
|   |       |    | STA. 680+00 TO STA. 710+00 |

| F.A.I. RTE.               | SECTION                | COUNTY     | TOTAL SHEETS | SHEET NO. |
|---------------------------|------------------------|------------|--------------|-----------|
| 70                        | D7 TREE REMOVAL 2023-3 | CUMBERLAND | 23           | 23        |
| CONTRACT NO. 74B69        |                        |            |              |           |
| ILLINOIS FED. AID PROJECT |                        |            |              |           |