

STATE OF ILLINOIS
DEPARTMENT OF TRANSPORTATION

F.A.P. RTE.	SECTION	COUNTY	TOTAL SHEETS	SHEET NO.
325	(57,113)PP	JERSEY	6	1
		ILLINOIS	CONTRACT NO. 76R72	

FOR INDEX OF SHEETS, SEE SHEET NO. 2

TRAFFIC DATA

IL 16 (BEGINNING OF PROJECT MOUND ST. TO JUNE ST.)

LOCATION	IL 16
2021 ADT	4000 (ACTUAL)
2041 ADT	4800 (ESTIMATED)
MU%	3.3
SU%	5.3

IL 16 (JUNE ST. TO END OF PROJECT)

LOCATION	IL 16
2021 ADT	3100 (ACTUAL)
2041 ADT	3600 (ESTIMATED)
MU%	2.9
SU%	3.5

**PROPOSED
HIGHWAY PLANS**

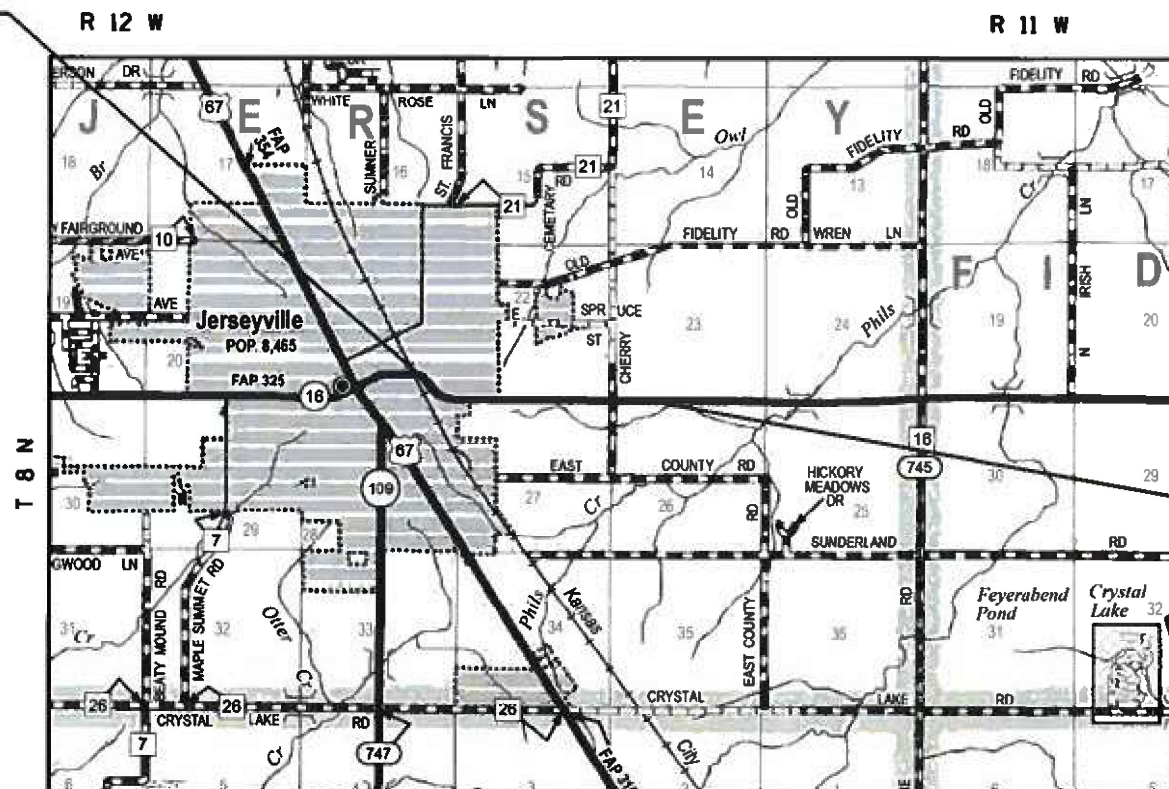
FAP ROUTE 325 (IL 16)
SECTION (57,113)PP
PROJECT STATE
CM-PARTIAL AND FULL DEPTH PATCHING
JERSEY COUNTY

C-98-147-22

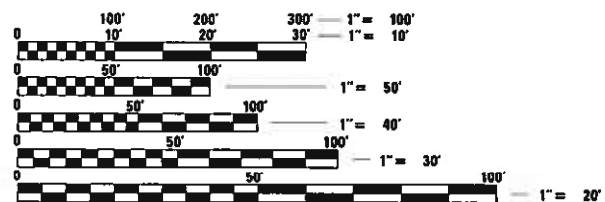


FUNCTIONAL CLASSIFICATION: OTHER PRINCIPAL ARTERIAL

BEGIN PROJECT
(MOUND ST.)
STA. 1188+28
LAT: 39.116295°
LONG: -90.315682°



END PROJECT
STA. 1256+92
LAT: 39.115859°
LONG: -90.291567°



FULL SIZE PLANS HAVE BEEN PREPARED USING STANDARD ENGINEERING SCALES. REDUCED SIZED PLANS WILL NOT CONFORM TO STANDARD SCALES. IN MAKING MEASUREMENTS ON REDUCED PLANS, THE ABOVE SCALES MAY BE USED.

J.U.L.I.E.
JOINT UTILITY LOCATION INFORMATION FOR EXCAVATORS
1-800-892-0123
OR 811



1" = 1 MILE

GROSS LENGTH = 6,864 FT. = 1.30 MILE
NET LENGTH = 6,864 FT. = 1.30 MILE

PROJECT ENGINEER: BILLIE OWEN
PROJECT MANAGER: MEIWU AN

CONTRACT NO. 76R72

STATE OF ILLINOIS
DEPARTMENT OF TRANSPORTATION

SUBMITTED Feb 6 20 23
Karl H B REGIONAL ENGINEER

March 24, 2023 [Signature] ENGINEER OF DESIGN AND ENVIRONMENT

March 24, 2023 [Signature] DIRECTOR OF HIGHWAYS PROJECT IMPLEMENTATION

**PRINTED BY THE AUTHORITY
OF THE STATE OF ILLINOIS**

INDEX OF SHEETS

- 1 COVER SHEET
- 2 INDEX OF SHEETS, HIGHWAY STANDARDS, GENERAL NOTES, MIXTURE REQUIREMENTS & COMMITMENTS
- 3 SUMMARY OF QUANTITIES
- 4 TYPICAL SECTIONS
- 5 SCHEDULE OF QUANTITIES
- 6 LOCATION MAP

HIGHWAY STANDARDS

- 000001-08 STANDARD SYMBOLS, ABBREVIATIONS AND PATTERNS
- 001006 DECIMAL OF AN INCH AND OF A FOOT
- 442201-03 CLASS C AND D PATCHES
- 701001-02 OFF-ROAD OPERATIONS, 2L, 2W, MORE THAN 15' AWAY
- 701006-05 OFF-ROAD OPERATIONS, 2L, 2W, MORE THAN 15' TO 24" FROM PAVEMENT EDGE
- 701011-04 OFF-ROAD MOVING OPERATIONS, 2L, 2W, DAY ONLY
- 701201-05 LANE CLOSURE, 2L, 2W, DAY ONLY FOR SPEEDS ≥ 45 MPH
- 701301-04 LANE CLOSURE, 2L, 2W, SHORT TIME OPERATIONS
- 701311-03 LANE CLOSURE, 2L, 2W, MOVING OPERATIONS DAY ONLY
- 701336-07 LANE CLOSURE, 2L, 2W, WORK AREAS IN SERIES, FOR SPEEDS ≥ 45 MPH
- 701901-08 TRAFFIC CONTROL DEVICES
- 780001-05 TYPICAL PAVEMENT MARKINGS
- 781001-04 TYPICAL APPLICATIONS RAISED REFLECTIVE PAVEMENT MARKERS

GENERAL NOTES

- 1. UTILITIES KNOWN TO HAVE FACILITIES WITHIN THE PROJECT AREA ARE AS FOLLOWS:

	AERIAL	BURIED
AMEREN ILLINOIS (GAS & ELECTRIC)	X	X
EVERSTREAM GLC HOLDING COMPANY LLC (COMMUNICATIONS)	X	X
FRONTIER COMMUNICATIONS (COMMUNICATIONS)	X	X
GRAFTON COMMUNICATIO S INC (COMMUNICATIONS)	X	X
ILLINOIS AMERICAN WATER COMPANY (WATER, SANITARY SEWER)		X
JERSEY COUNTY RURAL WATER COMPANY (WATER)		X
CITY OF JERSEYVILLE (SANITARY SEWER)		X
NEWWAVE COMMUNICATIONS (CABLE TV)	X	X

- 2. NO SURVEY WAS PERFORMED FOR THIS PROJECT AND THE PLANS WERE CREATED USING MICROFILM.
- 3. THE PROPOSED PAVEMENT MARKING SHALL MATCH THE LOCATIONS OF THE EXISTING PAVEMENT MARKING, AS DIRECTED BY THE ENGINEER.

GENERAL NOTES

- 4. TWO CHANGEABLE MESSAGE SIGNS SHALL BE REQUIRED FOR THIS PROJECT. THEY SHALL BE PLACED 2 WEEKS PRIOR TO ANY LANE CLOSURES. THE CHANGEABLE MESSAGE SIGNS SHALL BE PLACED ON IL 16 FOR THE DURATION OF THE CONTRACT AT THE DIRECTION OF THE ENGINEER.

MIXTURE REQUIREMENTS

ROUTE	FAP 325 (IL 16)
SECTION	(57,113)PP
COUNTY	JERSEY
CONTRACT	76R72

DESCRIPTION	CM - PARTIAL DEPTH PATCHING OF IL 16 FROM MOUNDS ST. IN JERSEYVILLE TO 1.3 MILES EAST.
-------------	--

MIXTURE USE	BINDER	SURFACE
AC/PG	PG 64-22	PG 64-22
DESIGN AIR VOIDS	4.0 % @ Ndes=70	4.0 % @ Ndes=70
MIX COMPOSTION (Gradation)	IL 19.0	IL 9.5
FRICTION AGG	MIXTURE "B"	MIXTURE "C"
QUALITY MGMT PROGRAM	QC/QA	QC/QA
MatTranDev Required?	NO	NO

COMMITMENTS

NONE

REV. - MS

MODEL: D:\default
 FILE: M:\misc\pml\illdot\cherryvale\pml\illdot\documents\DOT_Offices\District_8\Projects\0876R72\CD\Drawings\Sheet\0876R72-ah1-cover.dgn

USER NAME = Rahshun.Miller	DESIGNED -	REVISED -	STATE OF ILLINOIS DEPARTMENT OF TRANSPORTATION	INDEX OF SHEETS, HIGHWAY STANDARDS, GENERAL NOTES MIXTURE REQUIREMENTS, COMMITMENTS	F.A.P. RTE. 325	SECTION (57,113)PP	COUNTY JERSEY	TOTAL SHEETS 6	SHEET NO. 2	
PLOT SCALE = 100.0000' / in.	DRAWN -	REVISED -			SCALE: NTS	SHEET 1 OF 1 SHEETS	STA. TO STA.	CONTRACT NO. 76R72		
PLOT DATE = 1/27/2023	CHECKED -	REVISED -			ILLINOIS FED. AID PROJECT					
	DATE -	REVISED -								

CODE NO.	ITEM	UNIT	TOTAL QUANTITY	CONSTRUCTION CODE	
				100% STATE IL 16	100% STATE IL 16
				ROADWAY 0006	ROADWAY 0006
				URBAN	RURAL
44201815	CLASS D PATCHES, TYPE II, 14 INCH	SQ YD	26		26
44201819	CLASS D PATCHES, TYPE III, 14 INCH	SQ YD	48	24	24
44201821	CLASS D PATCHES, TYPE IV, 14 INCH	SQ YD	408	32	376
67100100	MOBILIZATION	L SUM	1	0.5	0.5
70100450	TRAFFIC CONTROL AND PROTECTION, STANDARD 701201	L SUM	1	0.5	0.5
70100600	TRAFFIC CONTROL AND PROTECTION, STANDARD 701336	L SUM	1	0.5	0.5
70107025	CHANGEABLE MESSAGE SIGN	CAL DA	82	41	41
70300100	SHORT TERM PAVEMENT MARKING	FOOT	2167	1361.3	805.7
70300150	SHORT TERM PAVEMENT MARKING REMOVAL	SQ FT	722	453.8	268.2
* 78001110	PAINT PAVEMENT MARKING - LINE 4"	FOOT	3583	1248.5	2334.5
* 78100100	RAISED REFLECTIVE PAVEMENT MARKER	EACH	12	6	6
78300200	RAISED REFLECTIVE PAVEMENT MARKER REMOVAL	EACH	12	6	6
X4406230	PARTIAL DEPTH REMOVAL, TYPE II, 3"	SQ YD	174	46	128
X4406430	PARTIAL DEPTH REMOVAL, TYPE III, 3"	SQ YD	536	232	304

CODE NO.	ITEM	UNIT	TOTAL QUANTITY	CONSTRUCTION CODE	
				100% STATE IL 16	100% STATE IL 16
				ROADWAY 0005	ROADWAY 0006
				URBAN	RURAL
X4406630	PARTIAL DEPTH REMOVAL, TYPE IV, 3"	SQ YD	160		160
X4421000	PARTIAL DEPTH PATCHING	TON	146	46	100

* SPECIALTY ITEM

MODEL: Default
 FILE: \\milserv\pub\idest-cw-beadefy.com\FW\DOT\Documents\DOT_Offices\Dir\rdt_8\Project\0876872\CAD\Drawings\CAD\Sheets\0876872-sh-covs.dgn

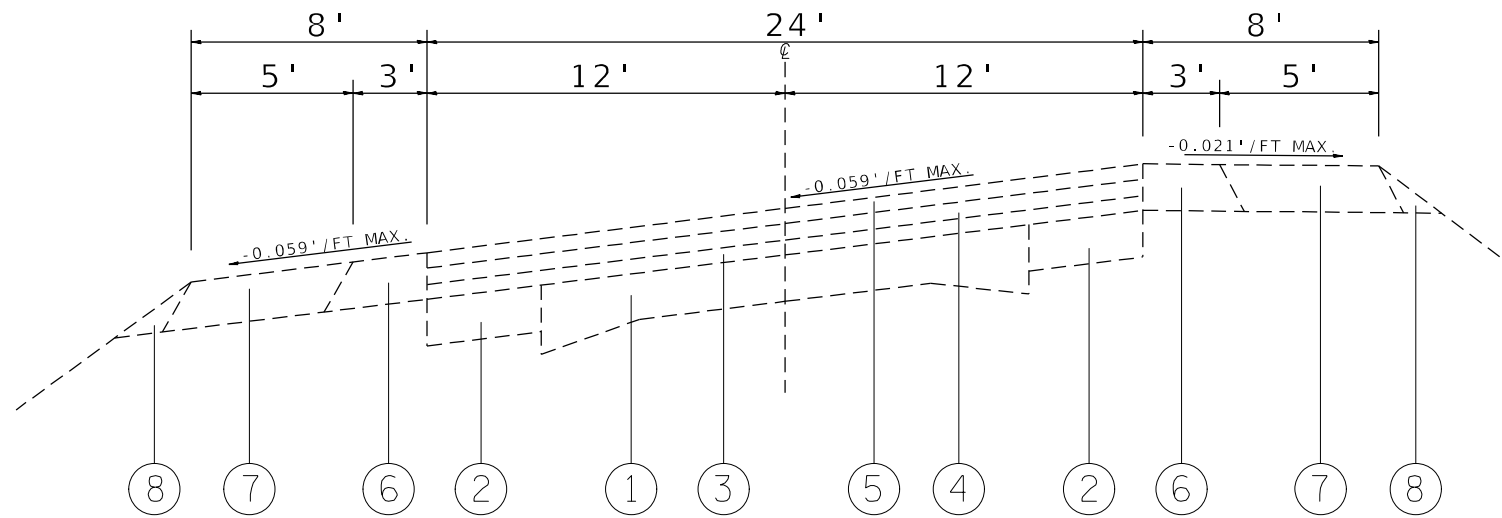
USER NAME = Rahshun,Miller	DESIGNED -	REVISED -
PLOT SCALE = 100,0000 ' / in.	DRAWN -	REVISED -
PLOT DATE = 1/27/2023	CHECKED -	REVISED -
	DATE -	REVISED -

**STATE OF ILLINOIS
DEPARTMENT OF TRANSPORTATION**

SUMMARY OF QUANTITIES

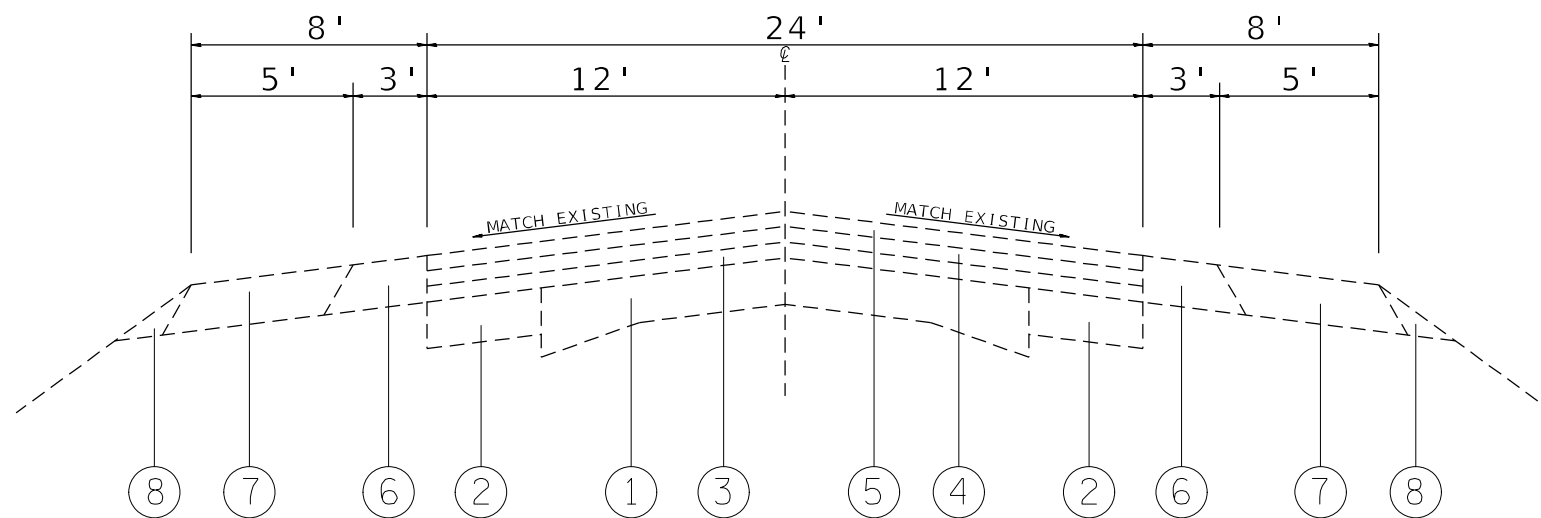
SCALE: NTS SHEET 1 OF 1 SHEETS STA. TO STA.

F.A.P. RTE.	SECTION	COUNTY	TOTAL SHEETS	SHEET NO.
325	(57.113)PP	JERSEY	6	3
			CONTRACT NO. 76R72	
			ILLINOIS FED. AID PROJECT	



SUPERELEVATION TYPICAL SECTION

STA, 1188+28 TO STA. 1194+68



TYPICAL SECTION

STA, 1194+68 TO STA. 1256+92

LEGEND

- ① EXISTING PCC PAVEMENT
- ② EXISTING BASE COURSE
- ③ EXISTING BITUMINOUS OVERLAY 1 1/2"
- ④ EXISTING LEVELING BINDER, TYPE 2, 2 3/4"
- ⑤ EXISTING HMA PAVEMENT 1 1/2"
- ⑥ EXISTING HMA SHOULDERS 6"
- ⑦ EXISTING AGGREGATE SHOULDERS, TYP A, 6"
- ⑧ EXISTING AGGREGATE SHOULDERS, TYPE B

MODEL: Default
 FILE: M:\MIS_Plan\Subsect-cw-bead-fwy.com\PIV\DOT\Documents\DOT_Offices\Dir\drf. 8\Project\10876872\CADD\131\CAD\Sheet\10876872-sh-cov-2.dgn

USER NAME = Rahshun, Miller	DESIGNED -	REVISED -
	DRAWN -	REVISED -
PLOT SCALE = 100,0000' / in.	CHECKED -	REVISED -
PLOT DATE = 1/27/2023	DATE -	REVISED -

**STATE OF ILLINOIS
DEPARTMENT OF TRANSPORTATION**

TYPICAL SECTIONS

SCALE: NTS SHEET 1 OF 1 SHEETS STA. TO STA.

F.A.P. RTE.	SECTION	COUNTY	TOTAL SHEETS	SHEET NO.
325	(57.113)PP	JERSEY	6	4
CONTRACT NO. 76R72			ILLINOIS FED. AID PROJECT	

PARTIAL DEPTH PATCHES 3"

LANE EB/WB	STATION	LENGTH	WIDTH	PARTIAL DEPTH PATCHING	PARTIAL DEPTH REMOVAL TYPE II	PARTIAL DEPTH REMOVAL TYPE III	PARTIAL DEPTH REMOVAL TYPE IV
		(FOOT)	(FOOT)	(TON)	(SQ YD)	(SQ YD)	(SQ YD)
URBAN							
EB	1197+26	210	3	11.8		70.0	
WB	1196+73	55	3	3.1	18.3		
WB	1201+48	30	3	1.7	10.0		
WB	1204+65	30	3	1.7	10.0		
EB	1207+82	210	3	11.8		70.0	
WB	1209+93	160	3	9.0		53.3	
RURAL							
EB	1231+05	10	12	2.2	13.3		
WB	1232+10	120	6	13.4		80.0	
EB	1232+63	40	12	9.0		53.3	
EB	1233+16	40	12	9.0		53.3	
EB	1246+36	200	6	22.4			133.3
WB	1246+36	100	6	11.2		66.7	
WB	1249+00	50	6	5.6	33.3		
EB	1256+92	50	6	5.6	33.3		
EB	1256+92	20	12	4.5	26.7		
SUB-TOTAL :				121.8	144.9	446.6	133.3
ANTICIPATED FAILURES 20%				24.4	29.0	89.3	26.7
TOTAL :				146	174	536	160

CLASS D PATCHES 14"

LANE EB/WB	STATION	LENGTH	WIDTH	TYPE II	TYPE III	TYPE IV
		(FOOT)	(FOOT)	(SQ YD)	(SQ YD)	(SQ YD)
URBAN						
EB	1198+84	20	12			26.7
EB	1212+04	30	6		20.0	
RURAL						
EB	1224+18	80	12			106.7
WB	1229+99	10	12	13.3		
EB	1230+52	80	6			53.3
WB	1230+52	60	6			40.0
WB	1231+58	50	6			33.3
EB	1231+58	30	6		20.0	
EB	1249+00	6	12	8.0		
WB	1250+06	60	12			80.0
SUB-TOTAL				21.3	40.0	340.0
ANTICIPATED FAILURES 20%				4.3	8.0	68.0
TOTAL :				26	48	408

PAVEMENT MARKING SCHEDULE

STATION	LENGTH FOOT	4" PAINT			SHORT TERM PAVEMENT MARKING (ONE LIFT) FOOT	SHORT TERM PAVEMENT MARKING REMOVAL SQFT	RAISED REFLECTIVE PAVEMENT MARKERS REMOVAL EACH	RAISED REFLECTIVE PAVEMENT MARKERS TWO-WAY AMBER EACH
		WHITE	YELLOW					
		EDGE LINE FOOT	SKIP- DASH FOOT	NO PASSING FOOT				
URBAN								
1188+28 TO 1198+28	1000	315.0	39.4		354.4	118.1	1	1
1198+28 TO 1208+28	1000	165.0	20.6	530.0	185.6	61.9	2	2
1208+28 TO 1218+28	1000	360.0	45.0		405.0	135.0	1	1
1218+28 TO 1228+28	1000	370.0	46.3	443.0	416.3	138.8	2	2
RURAL								
1228+28 TO 1238+28	1000	150.0	18.8	443.0	168.8	56.3	2	2
1238+28 TO 1248+28	1000	380.0	47.5		427.5	142.5	2	2
1248+28 TO 1256+92	864	186.0	23.3		209.3	69.8	2	2
SUBTOTAL :		1926	241	1416				
TOTAL :			3583		2167	722	12	12

MODEL: Default
 FILE: \\miller\p\miller\dot\documents\DOT\Office\Dir\dir: E:\Project\0876872\CADD\Drawings\0876872-ah-cover.dgn

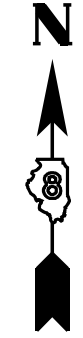
USER NAME = Rahshun,Miller	DESIGNED -	REVISED -
PLOT SCALE = 100,0000 ' / in.	DRAWN -	REVISED -
PLOT DATE = 1/27/2023	CHECKED -	REVISED -
	DATE -	REVISED -

**STATE OF ILLINOIS
DEPARTMENT OF TRANSPORTATION**

SCHEDULE OF QUANTITIES

SCALE: NTS SHEET 1 OF 1 SHEETS STA. TO STA.

F.A.P. RTE.	SECTION	COUNTY	TOTAL SHEETS	SHEET NO.
325	(57.113)PP	JERSEY	6	5
CONTRACT NO. 76R72				
ILLINOIS FED. AID PROJECT				



CHERRY LN. STA. 1247+15

FAP 325 (IL 16)

16

END PROJECT:
STA. 1256+92
(1.3 MI EAST)

SHIPMAN ST. (IL 16)

RURAL STA. 1216+98

URBAN STA. 1216+98

JUNE ST. STA. 1201+72

BEGIN PROJECT:
STA. 1188+28
(MOUNDS ST.)

FAP 325 (IL 16)

MOUNDS ST. STA. 1188+28

TRI POINT LN. STA. 1191+99

SHIPMAN ST. (IL 16)

16

MODEL: Default
FILE: \\MAILSrv\buildsaw\beadley.com\PI\DOT\Documents\DOT Office\Dir\dir_8\Project\0876872\CAD\Drawings\CAD\Sheets\0876872-ah-covr.dgn

USER NAME = Rahshun,Miller	DESIGNED -	REVISED -
	DRAWN -	REVISED -
PLOT SCALE = 100,0000' / in.	CHECKED -	REVISED -
PLOT DATE = 1/27/2023	DATE -	REVISED -

STATE OF ILLINOIS
DEPARTMENT OF TRANSPORTATION

LOCATION MAP			
SCALE: NTS	SHEET 1	OF 1 SHEETS	STA. TO STA.

F.A.P. RTE.	SECTION	COUNTY	TOTAL SHEETS	SHEET NO.
325	(57.113)PP	JERSEY	6	6
CONTRACT NO. 76R72				
ILLINOIS FED. AID PROJECT				