

STATE OF ILLINOIS
DEPARTMENT OF TRANSPORTATION

F.A. RTE.	SECTION	COUNTY	TOTAL SHEETS	SHEET NO.
D9	BRIDGE OVERLAY 2023-5	**	25	1
ILLINOIS		CONTRACT NO. 78939		

*FAP 726/FAP 873 **JOHNSON/JACKSON

FOR INDEX OF SHEETS, SEE SHEET NO. 3

FOR SUMMARY OF QUANTITIES, SEE SHEET NO. 4-6

**PROPOSED
HIGHWAY PLANS**

FAP 726/FAP 873 (IL 37/L 149)
SECTION D9 BRIDGE OVERLAY 2023-5
PROJECT COVD-HBFP-JLFA(906)
BRIDGE REPAIRS
JOHNSON/JACKSON COUNTY

C-99-045-22

TRAFFIC DATA

BRIDGE NO. 1
SN 044-0012
IL 37

2021 ADT = 1400, 17% TRUCKS

BRIDGE NO. 2
SN 039-0057
IL 149

2021 ADT = 3000, 5% TRUCKS

TOWNSHIPS

SN 044-0012
CACHE

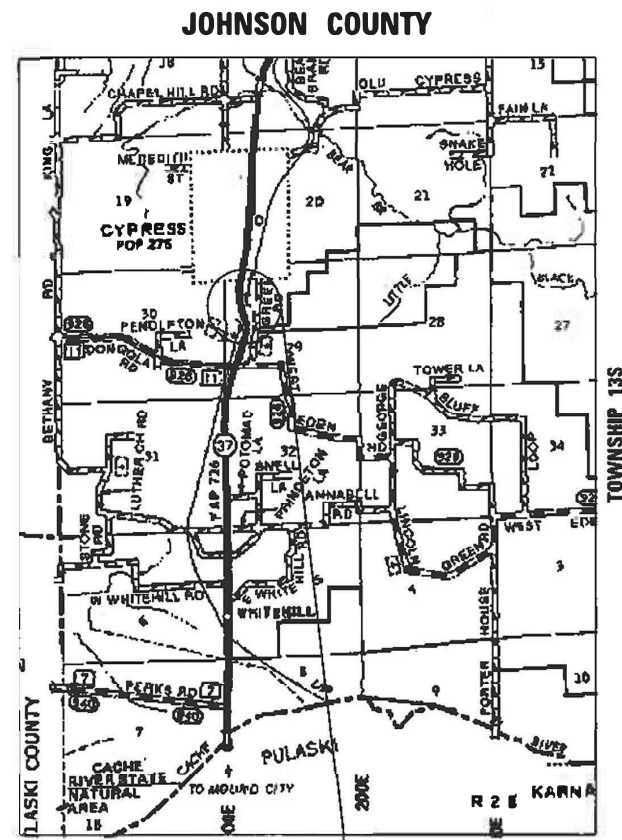
SN 039-0057
DESOTO

POSTED SPEED : 55 MPH

J.U.L.I.E.
JOINT UTILITY LOCATION INFORMATION FOR EXCAVATION
1-800-892-0123
OR 811

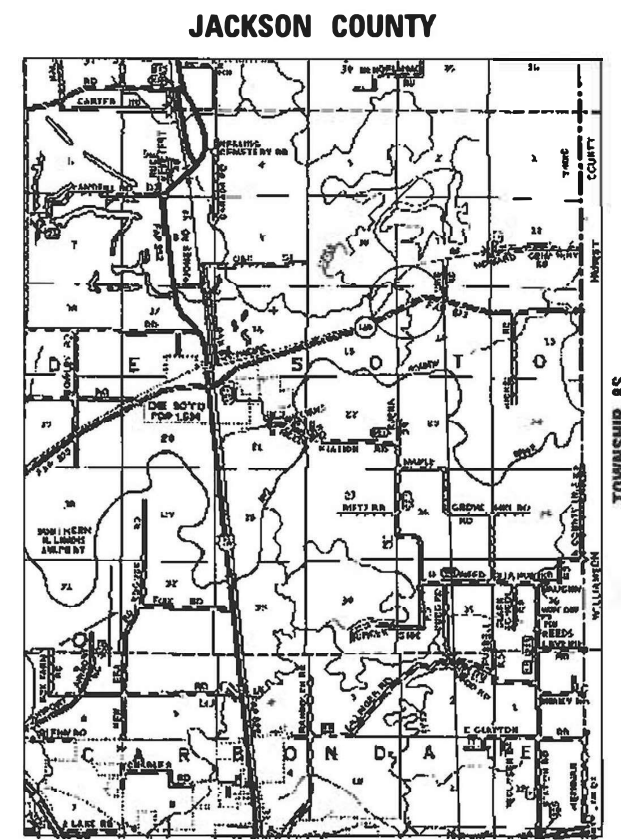
PROJECT ENGINEER: GRANT DETERDING
PROJECT DESIGNER: DAVID WILSON

CONTRACT NO. 78939



BRIDGE NO. 1
JOHNSON COUNTY
STRUCTURE 044-0012
IL 37 OVER ABANDONED RR
0.2 MILES SOUTH OF CYPRESS

GROSS LENGTH = 693 .08 FT. = 0 .13 MILES
NET LENGTH = 693 .08 FT. = 0 .13 MILES



BRIDGE NO. 2
JACKSON COUNTY
STRUCTURE 039-0057
IL 149 OVER LITTLE MUDDY RIVER
2 MILES EAST OF DESOTO



STATE OF ILLINOIS
DEPARTMENT OF TRANSPORTATION

SUBMITTED Jan 27 20 23
Kirk H. Brown
REGION FIVE ENGINEER

March 24, 2023 [Signature]
ENGINEER OF DESIGN AND ENVIRONMENT

March 24, 2023 [Signature]
DIRECTOR OF HIGHWAYS PROJECT IMPLEMENTATION

PRINTED BY THE AUTHORITY
OF THE STATE OF ILLINOIS

MODEL: SignSheet.dwg (Sheet)
 FILE NAME: \\p03840264001\p03840264001\DOT\Documents\DOT\082023\325\325_SignSheet.dwg
 C:\Program Files\Autodesk\AutoCAD 2023\acad.lsp
 C:\Program Files\Autodesk\AutoCAD 2023\acad.lsp

Prepared By: Charles Stein
 DISTRICT STUDIES & PLANS ENGINEER

Examined By: Nancy Lee
 DISTRICT LAND ACQUISITION ENGINEER

Examined By: Carrie Noh
 DISTRICT PROGRAM DEVELOPMENT ENGINEER

Examined By: Tom Collins
 DISTRICT OPERATIONS ENGINEER

Examined By: Daryl J. Tuel
 DISTRICT PROJECT IMPLEMENTATION ENGINEER

Examined By: Daryl J. Tuel
 DISTRICT CONSTRUCTION ENGINEER

Examined By: Ann Hays
 DISTRICT MATERIALS ENGINEER

USER NAME * David.A.Wilson	DESIGNED -	REVISED -
DRAWN -	REVISED -	
CHECKED -	REVISED -	
DATE -	REVISED -	
PLOT SCALE * 0.18066633' / ft.		
PLOT DATE * 1/26/2023		

STATE OF ILLINOIS
DEPARTMENT OF TRANSPORTATION

SIGNATURE SHEET

F.A. RTE.	SECTION	COUNTY	TOTAL SHEETS	SHEET NO.
	D9 BRIDGE OVERLAY 2023-5	--	25	2
CONTRACT NO. 78939				
ILLINOIS	FED. AID PROJECT		JOHNSON/JACKSON	

SCALBO SCALE SHEET 2 OF 25 SHEETS STA. TO STA.

GENERAL NOTES

FACTORS USED FOR ESTIMATING PLAN QUANTITIES ARE AS FOLLOWS AND SHALL NOT BE USED FOR THE BASIS OF FINAL QUANTITIES:
 ALL HOT MIX ASPHALT 2.016 TONS / CU YD

ON ALL SUPERELEVATED CURVES, THE PROPOSED BASE COURSE WIDENING SHALL BE CONSTRUCTED WITH A SLOPE CONFORMING TO THE RATE OF SUPERELEVATION OF THE EXISTING PAVEMENT.

THE QUANTITY OF SHORT TERM PAVEMENT MARKING SHOWN IN THE PLANS IS BASED ON ONE APPLICATION EACH FOR THE HMA SURFACE REMOVAL, BINDER COURSE, AND SURFACE COURSE.

AT ALL LOCATIONS WHERE THE PROPOSED HOT MIX ASPHALT OR CONCRETE PAVEMENT JOINS AN EXISTING HOT MIX ASPHALT OR CONCRETE PAVEMENT, A FULL DEPTH SAWED JOINT SHALL BE CONSTRUCTED. THE COST OF THIS JOINT WILL BE INCLUDED IN THE COST OF THE TYPE OF PAVEMENT BEING CONSTRUCTED.

EDGE LINE PAVEMENT MARKING SHALL BE REMOVED IF A 10 FT LANE WIDTH CANNOT BE MAINTAINED. TEMPORARY EDGE LINES SHALL BE INSTALLED WHEN THE EDGE LINES ARE REMOVED.

COMMITMENTS: NONE

INDEX OF SHEETS

1	COVER SHEET
2	SIGNATURE SHEET
3	GENERAL NOTES, INDEX OF SHEETS AND STANDARDS
4-6	SUMMARY OF QUANTITIES
7	SCHEDULES
8	GENERAL PLAN AND ELEVATION SN 044-0012
9	TYPICAL SECTION SN 044-0012
10	STAGING SN 044-0012
11	PATCHING DETAILS SN 044-0012
12	NORTH ABUTMENT JOINT RECONSTRUCTION SN 044-0012
13	SOUTH ABUTMENT JOINT ELIMINATION SN 044-0012
14	PIERS 2&3 REPAIRS SN 044-0012
15	PIERS 1&4 AND NORTH ABUTMENT REPAIRS SN 044-0012
16	ELASTOMERIC BEARINGS SN 044-0012
17	BAR SPLICERS SN 044-0012
18	PREFORMED JOINT STRIP SEAL DETAILS SN 044-0012
19	TEMPORARY CONCRETE BARRIER SN 044-0012
20	BUTT JOINT DETAILS SN 044-0012
21	GENERAL PLAN AND ELEVATION SN 039-0057
22	TYPICAL SECTION SN 039-0057
23	STAGING DETAILS SN 039-0057
24	PATCHING DETAILS SN 039-0057
25	BUTT JOINT DETAILS SN 039-0057

HMA MIXTURE REQUIREMENTS

Locations:	Hot-Mix Asphalt Surface Course Approach Grade Raise/Full Depth Shoulders surface lift
Mixture Use(s):	Hot-Mix Asphalt Surface Course, Mix C, N70
PG:	SBS PG64-22
Design Air Voids:	4.0%, 70 Gyration Design
Mixture Composition: (Gradation Mixture)	IL-9.5mm
Friction Aggregate:	Mix C
Mixture Weight:	112lbs/Sq Yd/in
Quality Management Program:	QC/QA
Sublot Size:	3000
Material Transfer Device:	NO

Locations:	Full Depth Shoulders Bottom Lifts
Mixture Use(s):	Hot-Mix Asphalt Binder Course, N70
PG:	SBS PG64-22
Design Air Voids:	4.0%, 70 Gyration Design
Mixture Composition: (Gradation Mixture)	IL-19,mm
Friction Aggregate:	None
Mixture Weight:	112 lbs/Sq Yd/in
Quality Management Program:	QC/QA
Sublot Size:	3000
Material Transfer Device:	NO

Paving Lifts
 HMA Approach Grade Raise:
 1½"-Hot-Mix Asphalt Surface Course, Mix C, N70, 9.5mm
 Full Depth Shoulders, 10":
 Top Lift, 2" - Hot-Mix Asphalt Surface Course, Mix C, N70
 Bottom Lifts, 2 each 4" - Hot-Mix Asphalt Binder Course, N70

STANDARDS

000001-08	STANDARD SYMBOLS, ABBREVIATIONS AND PATTERNS
001001-02	AREAS OF REINFORCEMENT BARS
001006	DECIMAL OF AN INCH AND OF A FOOT
701001-02	OFF-ROAD OPERATIONS, 2L, 2W, MORE THAT 15' AWAY
701006-05	OFF-ROAD OPERATIONS, 2L, 2W, 15' TO 24' FROM PAVEMENT EDGE
701316-13	LANE CLOSURE, 2L, 2W, BRIDGE REPAIR FOR SPEEDS > 45 MPH
701321-18	LANE CLOSURE, 2L, 2W, BRIDGE REPAIR WITH BARRIER
701326-04	LANE CLOSURE, 2L, 2W, PAVEMENT WIDENING, FOR SPEEDS ≥ 45 MPH
701901-08	TRAFFIC CONTROL DEVICES
704001-08	TEMPORARY CONCRETE BARRIER
780001-05	TYPICAL PAVEMENT MARKINGS
782006-01	GUARDRAIL AND BARRIER WALL REFLECTOR MOUNTING DETAILS
862001-01	UNINTERRUPTABLE POWER SUPPLY (UPS)
420001-10	PAVEMENT JOINTS
631031-18	TRAFFIC BARRIER TERMINAL, TYPE 6
701201-05	LANE CLOSURE, 2L, 2W, DAY ONLY, FOR SPEEDS >= 45 MPH

REV. - MS

MODEL: General Notes_Index of Sheets and Standards (Sheet)
 FILE NAME: P:\GIS\p1\m107\DOT\Comm\m107\Office\Drawn\9\CRD_Proj\Draw\78939\CAD\Draw\9\9899_Sht03_Index_GenNotes.dgn

USER NAME = David.A.Wilson	DESIGNED -	REVISED -	STATE OF ILLINOIS DEPARTMENT OF TRANSPORTATION	GENERAL NOTES, INDEX OF SHEETS AND STANDARDS			F.A. RTE.	SECTION	COUNTY	TOTAL SHEETS	SHEET NO.
DRAWN -	REVISED -	*					D9 BRIDGE OVERLAY 2023-5	**	25	3	
PLOT SCALE = 0.16666633' / in.	CHECKED -	REVISED -		CONTRACT NO. 78939							
PLOT DATE = 1/27/2023	DATE -	REVISED -		SCALE	SHEET 3	OF 25	SHEETS	STA.	TO STA.	ILLINOIS	FED. AID PROJECT

SUMMARY OF QUANTITIES

COUNTY:	JOHNSON CO	JACKSON CO
ROUTE:	IL 37 (FAP 726)	IL 149 (FAP 873)
FUNDING:	80% FEDERAL 20% STATE	100% FEDERAL
LOCATION:	RURAL	RURAL
	SN 044-0012	SN 039-0057
	0047	0047

CODE NUMBER	ITEM DESCRIPTION	UNIT	TOTAL QUANTITY	JOHNSON CO	JACKSON CO
20200600	EXCAVATING AND GRADING EXISTING SHOULDER	UNIT	6	3	3
40600290	BITUMINOUS MATERIALS (TACK COAT)	POUND	357	173	184
40600982	HOT-MIX ASPHALT SURFACE REMOVAL - BUTT JOINT	SQ YD	293	142	151
40600990	TEMPORARY RAMP	SQ YD	83	43	40
40604052	HOT-MIX ASPHALT SURFACE COURSE, IL-9.5, MIX "C", N70	TON	118	60	58
48203037	HOT-MIX ASPHALT SHOULDERS, 10"	SQ YD	206	99	107
50102400	CONCRETE REMOVAL	CU YD	19	19	
50300255	CONCRETE SUPERSTRUCTURE	CU YD	21.3	21.3	
50300260	BRIDGE DECK GROOVING	SQ YD	1,391	629	762
50300300	PROTECTIVE COAT	SQ YD	1,494	681	813
50500405	FURNISHING AND ERECTING STRUCTURAL STEEL	POUND	580	580	
50800205	REINFORCEMENT BARS, EPOXY COATED	POUND	2,010	2,010	
50800515	BAR SPLICERS	EACH	24	24	
52000110	PREFORMED JOINT STRIP SEAL	FOOT	50	50	

REV. - MS

MODEL: SDC (R14) FILE NAME: P:\GIS\Projects\78939\Drawings\DOT\Office\Drawings\DOT\Drawings\DOT\78939-SubC_SumQ.dgn

USER NAME = David.A.Wilson	DESIGNED -	REVISED -	
	DRAWN -	REVISED -	
PLOT SCALE = 0.16666633 / in.	CHECKED -	REVISED -	
PLOT DATE = 1/27/2023	DATE -	REVISED -	

**STATE OF ILLINOIS
DEPARTMENT OF TRANSPORTATION**

SUMMARY OF QUANTITIES

SCALE OF SHEET 4 OF 25 SHEETS STA. TO STA.

F.A. RTE.	SECTION	COUNTY	TOTAL SHEETS	SHEET NO.
*	D9 BRIDGE OVERLAY 2023-5	**	25	4
			CONTRACT NO. 78939	
		ILLINOIS FED. AID PROJECT		

*FAP 726/FAP 873

**JOHNSON/JACKSON

SUMMARY OF QUANTITIES - CONT

COUNTY:	JOHNSON CO	JACKSON CO
ROUTE:	IL 37 (FAP 726)	IL 149 (FAP 873)
FUNDING:	80% FEDERAL 20% STATE	100% FEDERAL
LOCATION:	RURAL	RURAL
TOTAL QUANTITY:	SN 044-0012 0047	SN 039-0057 0047

CODE NUMBER	ITEM DESCRIPTION	UNIT	TOTAL QUANTITY	JOHNSON CO	JACKSON CO
52100020	ELASTOMERIC BEARING ASSEMBLY, TYPE II	EACH	5	5	
52100520	ANCHOR BOLTS, 1"	EACH	10	10	
60300105	FRAMES AND GRATES TO BE ADJUSTED	EACH	2	2	
* 63302700	REMOVE AND REERECT TRAFFIC BARRIER TERMINALS, TYPE 6	EACH	4	4	
67000400	ENGINEER'S FIELD OFFICE, TYPE A	CAL MO	8	5	3
67100100	MOBILIZATION	L SUM	1	0.5	0.5
70100100	TRAFFIC CONTROL AND PROTECTION, STANDARD 701316	EACH	1		1
70100405	TRAFFIC CONTROL AND PROTECTION, STANDARD 701321	EACH	1	1	
70100450	TRAFFIC CONTROL AND PROTECTION, STANDARD 701201	L SUM	1	0.5	0.5
70100500	TRAFFIC CONTROL AND PROTECTION, STANDARD 701326	L SUM	1	0.5	0.5
70106500	TEMPORARY BRIDGE TRAFFIC SIGNALS	EACH	2	1	1
70106700	TEMPORARY RUMBLE STRIPS	EACH	12	6	6
70107025	CHANGEABLE MESSAGE SIGN	CAL DA	56	28	28
70300100	SHORT TERM PAVEMENT MARKING	FOOT	3,754	2,252	1,502
70300150	SHORT TERM PAVEMENT MARKING REMOVAL	SQ FT	1,252	751	501

* SPECIALTY ITEM

REV. - MS

MODEL: SDC2 (Rev. 11/14) FILE NAME: P:\GIS\Projects\DOT\Office\DOT\Projects\78939\DOT\78939_Summary_Sheet_SDC2.dgn

USER NAME = David.A.Wilson	DESIGNED -	REVISED -
PLOT SCALE = 0.16666633 / in.	DRAWN -	REVISED -
PLOT DATE = 1/27/2023	CHECKED -	REVISED -
	DATE -	REVISED -

**STATE OF ILLINOIS
DEPARTMENT OF TRANSPORTATION**

SUMMARY OF QUANTITIES

SCALE: NO SCALE SHEET 5 OF 25 SHEETS STA. TO STA.

F.A. RTE.	SECTION	COUNTY	TOTAL SHEETS	SHEET NO.
*	D9 BRIDGE OVERLAY 2023-5	**	25	5
CONTRACT NO. 78939				

*FAP 726/FAP 873

**JOHNSON/JACKSON

SUMMARY OF QUANTITIES - CONT

SUMMARY OF QUANTITIES - CONT			COUNTY:	JOHNSON CO	JACKSON CO
			ROUTE:	IL 37 (FAP 726)	IL 149 (FAP 873)
			FUNDING:	80% FEDERAL 20% STATE	100% FEDERAL
			LOCATION:	RURAL	RURAL
CODE NUMBER	ITEM DESCRIPTION	UNIT	TOTAL QUANTITY	SN 044-0012 0047	SN 039-0057 0047
70303120	TEMPORARY PAVEMENT MARKING - LINE 4" - MODIFIED URETHANE	FOOT	3,798	2,252	1,546
70400100	TEMPORARY CONCRETE BARRIER	FOOT	437.5	437.5	
70400200	RELOCATE TEMPORARY CONCRETE BARRIER	FOOT	412.5	412.5	
70600260	IMPACT ATTENUATORS, TEMPORARY (FULLY REDIRECTIVE, NARROW), TEST LEVEL 3	EACH	2.0	2.0	
70600332	IMPACT ATTENUATORS, RELOCATE (FULLY REDIRECTIVE, NARROW), TEST LEVEL 3	EACH	2.0	2.0	
* 78009004	MODIFIED URETHANE PAVEMENT MARKING - LINE 4"	FOOT	3,798	2,252	1,546
78300200	RAISED REFLECTIVE PAVEMENT MARKER REMOVAL	EACH	6	3	3
78300201	PAVEMENT MARKING REMOVAL - GRINDING	SQ FT	2,532	1,502	1,030
* 86200300	UNINTERRUPTABLE POWER SUPPLY, EXTENDED	EACH	2	1	1
Z0001800	APPROACH SLAB REPAIR (PARTIAL DEPTH)	SQ YD	51	27	24
Z0001899	JACK AND REMOVE EXISTING BEARINGS	EACH	5	5	
Z0012130	BRIDGE DECK SCARIFICATION 3/4"	SQ YD	1,484	671	813
Z0012164	BRIDGE DECK MICROSILICA CONCRETE OVERLAY 2 1/2"	SQ YD	1,484	671	813
Z0012754	STRUCTURAL REPAIR OF CONCRETE (DEPTH EQUAL TO OR LESS THAN 5 INCHES)	SQ FT	63.7	61.9	1.8

* SPECIALTY ITEM

MODEL: SOQ (Sheet) FILE NAME: P:\GIS\Projects\78939\Drawings\DOT\Office\Drawings\DOT\78939-SubC_Soq.dgn

USER NAME = David.A.Wilson	DESIGNED -	REVISED -
PLOT SCALE = 0.16666633 / in.	DRAWN -	REVISIED -
PLOT DATE = 1/27/2023	CHECKED -	REVISIED -
	DATE -	REVISIED -

**STATE OF ILLINOIS
DEPARTMENT OF TRANSPORTATION**

SUMMARY OF QUANTITIES

SCALE: SHEET 6 OF 25 SHEETS STA. TO STA.

F.A. RTE.	SECTION	COUNTY	TOTAL SHEETS	SHEET NO.
*	D9 BRIDGE OVERLAY 2023-5	**	25	6
CONTRACT NO. 78939				

*FAP 726/FAP 873

**JOHNSON/JACKSON

PAVEMENT MARKING SCHEDULE										
STATION				NOTES				MODIFIED URETHANE PAVEMENT MARKING - LINE 4"		
								SOLID WHITE	YELLOW SKIP DASH	SOLID YELLOW
				FOOT			FOOT			
SN 044-0012										
1488+99.60	RT	TO	1496+75.60	RT			350	0	0	
1488+99.60			1496+75.60		ALONG CENTERLINE		0	0	1552	
1488+99.60	LT	TO	1496+75.60	LT			350	0	0	
SN 039-0057										
27A+49.55	RT	TO	33A+74.55	RT			410.5	0	0	
27A+49.55			33A+74.55		ALONG CENTERLINE		0	100	625	
27A+49.55	LT	TO	33A+74.55	LT			410.5	0	0	
SUBTOTAL							1521	100	2177	
TOTAL							3798			

CONCRETE AND REINFORCEMENT SCHEDULE				
BRIDGE	LOCATION	CONCRETE REMOVAL (CU YD)	CONCRETE SUPERSTRUCTURE (CU YD)	REINFORCEMENT BARS, EPOXY COATED (POUND)
SN 044-0012				
	N. ABUT. JOINT	9.4	10.5	920
	S. ABUT. JOINT	9.6	10.8	1090
TOTAL		19	21.3	2010

MODEL: Schedules (Sheet)
 FILE NAME: P:\GIS\Projects\DOT\Office\District 9\ORD Project\78939\CADD\Drawings\DOT\8939-SubE-Schedules.dgn

USER NAME = David.A.Wilson	DESIGNED -	REVISED -	STATE OF ILLINOIS DEPARTMENT OF TRANSPORTATION	SCHEDULES			F.A.* RTE.	SECTION	COUNTY	TOTAL SHEETS	SHEET NO.
PLOT SCALE = 0.16666833' / in.	DRAWN -	REVISED -					* D9 BRIDGE OVERLAY 2023-5	**	25	7	
PLOT DATE = 3/21/2023	CHECKED -	REVISED -		SCALING SCALE SHEET 7 OF 25 SHEETS STA. TO STA.			CONTRACT NO. 78939		ILLINOIS FED. AID PROJECT		
	DATE -	REVISED -					*FAP 726/FAP 873 **JOHNSON/JACKSON				

GENERAL NOTES

Plan dimensions and details relative to existing plans are subject to nominal construction variations. The Contractor shall field verify existing dimensions and details affecting new construction and make necessary approved adjustments prior to construction or ordering materials. Such variations shall not be cause for additional compensation for a change in scope of work, however, the Contractor will be paid for the quantity actually furnished at the unit price bid for the work.

Reinforcement bars designated (E) shall be epoxy coated.

Prior to pouring the new concrete deck, all heavy or loose rust, loose mill scale, and other loose or potentially detrimental foreign material shall be removed from the surfaces in contact with concrete. Tightly adhered paint may remain unless otherwise noted. Removal shall be accomplished by methods that will not damage the steel and the cost will be included in the pay item covering removal of the existing concrete.

TOTAL BILL OF MATERIAL

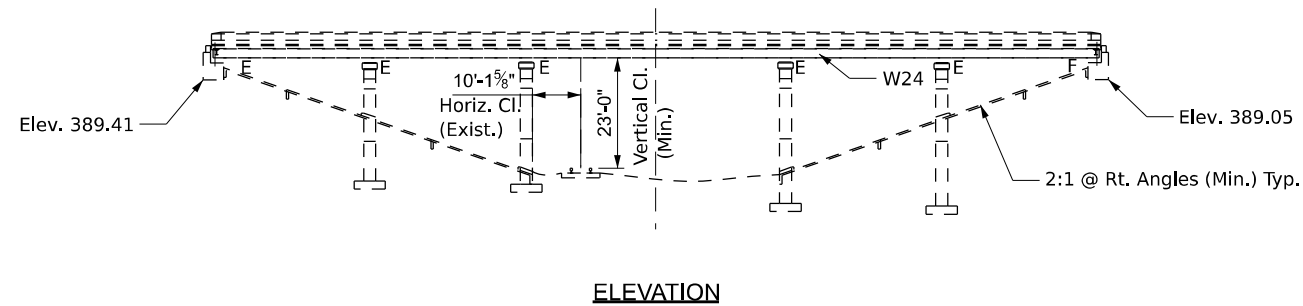
ITEM	UNIT	QUANTITY
Concrete Removal	Cu Yd	19.0
Concrete Superstructure	Cu Yd	21.3
Bridge Deck Grooving	Sq Yd	629
Protective Coat	Sq Yd	681
Furnishing and Erecting Structural Steel	Pound	580
Reinforcement Bars, Epoxy Coated	Pound	2010
Bar Splicers	Each	24
Preformed Joint Strip Seal	Foot	50
Elastomeric Bearing Assembly, Type II	Each	5
Anchor Bolts, 1"	Each	10
Approach Slab Repair (Partial Depth)	Sq Yd	27
Jack and Remove Existing Bearings	Each	5
Bridge Deck Scarification 3/4"	Sq Yd	671
Bridge Deck Microsilica Concrete Overlay 2 1/2"	Sq Yd	671
Structural Repair of Concrete (Depth ≤ 5")	Sq Ft	61.9

Existing structural steel that will be in contact with new structural steel shall be cleaned and painted prior to erection as required by the Special Provision "Cleaning and Painting Contact Surface Areas of Existing Steel Structures".

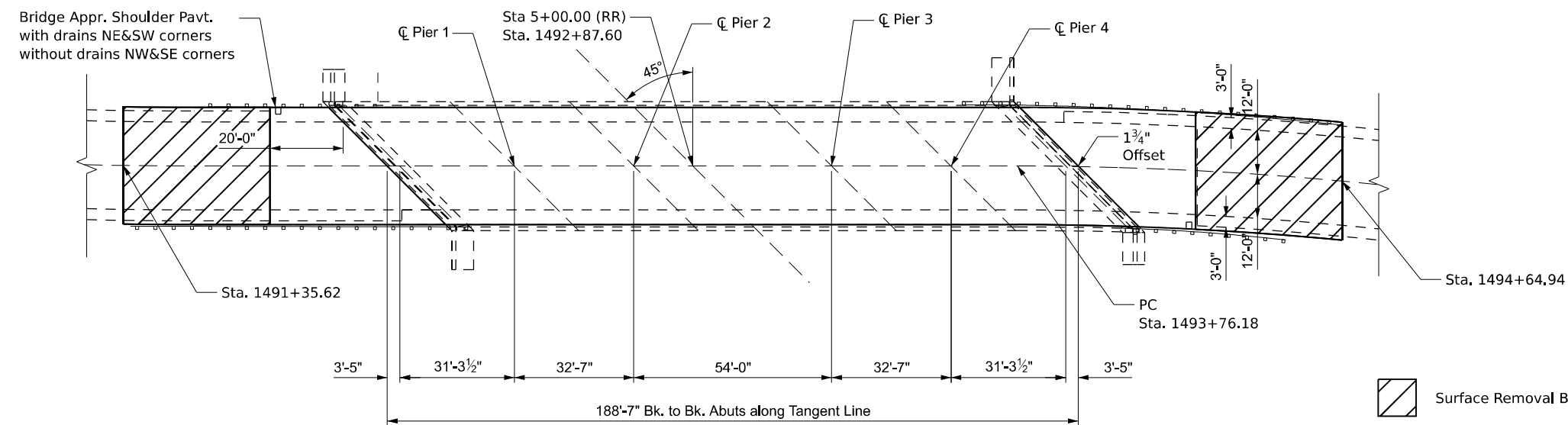
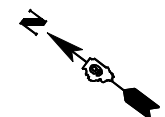
Existing reinforcement bars extending into the removal area shall be cleaned, straightened and incorporated into the new construction. Any reinforcement bars that are damaged during concrete removal shall be replaced with an approved bar splicer or anchorage system. Cost included with Concrete Removal.

Joint openings shall be adjusted according to Article 520.04 of the Std. Specs. when the deck is poured at an ambient temperature other than 50° F.

All new structural steel and bearing assembly shall be hot-dip galvanized. See Special Provisions for "Hot Dip Galvanizing For Structural Steel"



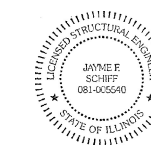
ELEVATION



PLAN

SCOPE OF WORK

- 1) Scarify and Microsilica Overlay
- 2) Full depth strip seal at North Abutment
- 3) Endose Joint at South Abutment
- 4) Replace Rocker bearings at North Abutment with Elastomeric Bearings
- 5) Structural Repair of Concrete on substructure repairs



EXPIRES 11-30-2023

Jayme F. Schiff

BRIDGE REPAIRS
IL 37 (FAP 726)
OVER ABANDONED RR
JOHNSON COUNTY
D9 BRIDGE OVERLAY 2023-5
SN 044-0012

STATE OF ILLINOIS
DEPARTMENT OF TRANSPORTATION

GENERAL PLAN AND ELEVATION
SN 044-0012

USER NAME = David.A.Wilson	DESIGNED -	REVISED -
PLOT SCALE = 0.16666633' / in.	DRAWN -	REVISED -
PLOT DATE = 3/21/2023	CHECKED -	REVISED -
	DATE -	REVISED -

SCALES SCALE SHEET 8 OF 25 SHEETS STA. TO STA.

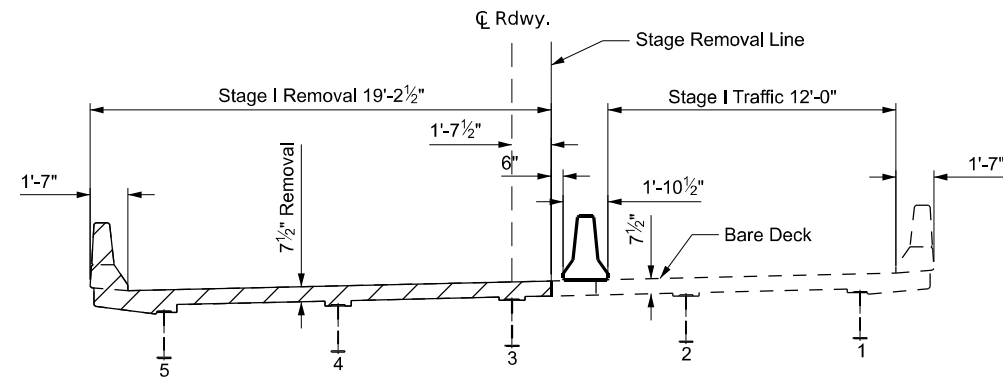
F.A. RTE.	SECTION	COUNTY	TOTAL SHEETS	SHEET NO.
*	D9 BRIDGE OVERLAY 2023-5	**	25	8

CONTRACT NO. 78939

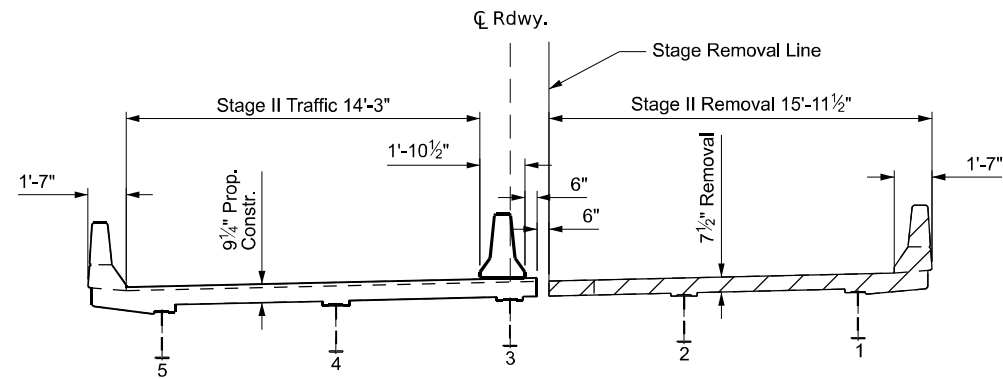
ILLINOIS FED. AID PROJECT

**JOHNSON/JACKSON

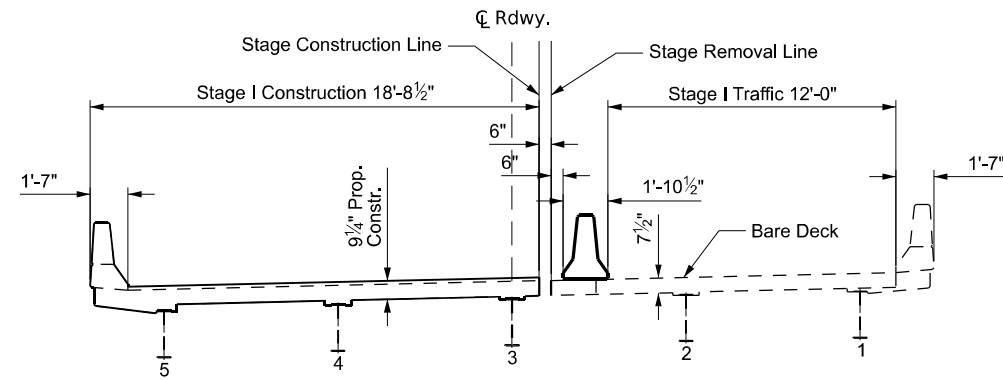
MODEL: SN 044-0012 General Plan and Elevation-2 (Sheet)
FILE NAME: P:\Projects\2023\03\DOT Office\District 9\ORD Project\78939\CADD\Info\78939-ContractPlan_and_Elevation.dgn



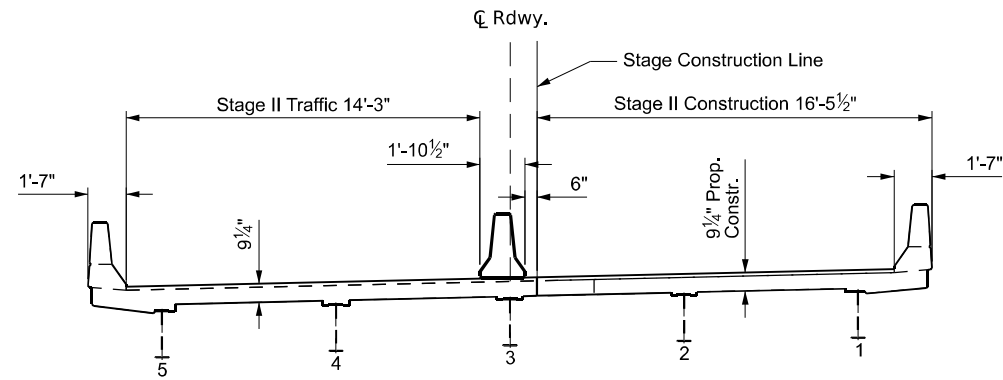
STAGE I REMOVAL
(Looking South)



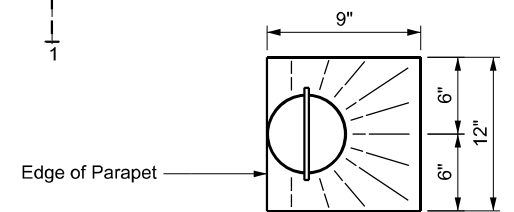
STAGE II REMOVAL
(Looking South)



STAGE I CONSTRUCTION
(Looking South)

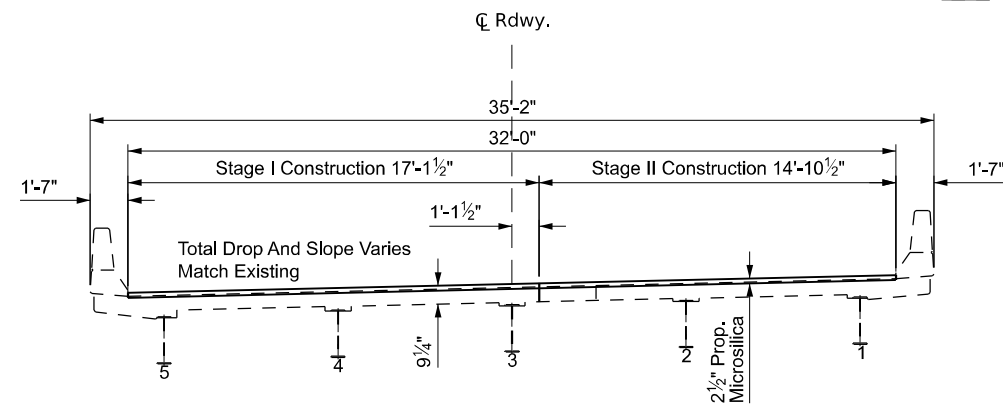


STAGE II CONSTRUCTION
(Looking South)

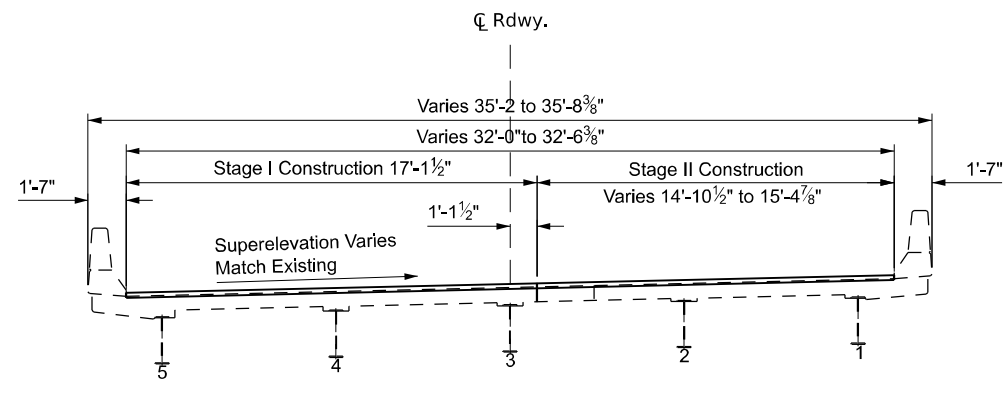


TOP PLAN
Slope Concrete to Drains

Concrete Removal at Joint Reconstruction



TYPICAL CROSS SECTION - OUTSIDE LIMITS OF JOINT (SPANS 1, 2, 3 & 4)
(Looking South)



TYPICAL CROSS SECTION - OUTSIDE LIMITS OF JOINT (SPAN 5)
(Looking South)

MODEL: SN 044-0012 Typical Section (Sheet)
FILE NAME: P:\Illinois\2023\BID Documents\DOT Office\District 9\ORD Project\78939\CAD\Drawings\DOT\78939-Design.dgn

USER NAME = David.A.Wilson	DESIGNED -	REVISED -
DRAWN -	REVISIONS -	
PLOT SCALE = 0.16666633' / in.	CHECKED -	REVISIONS -
PLOT DATE = 3/21/2023	DATE -	REVISIONS -

STATE OF ILLINOIS
DEPARTMENT OF TRANSPORTATION

TYPICAL SECTION
SN 044-0012

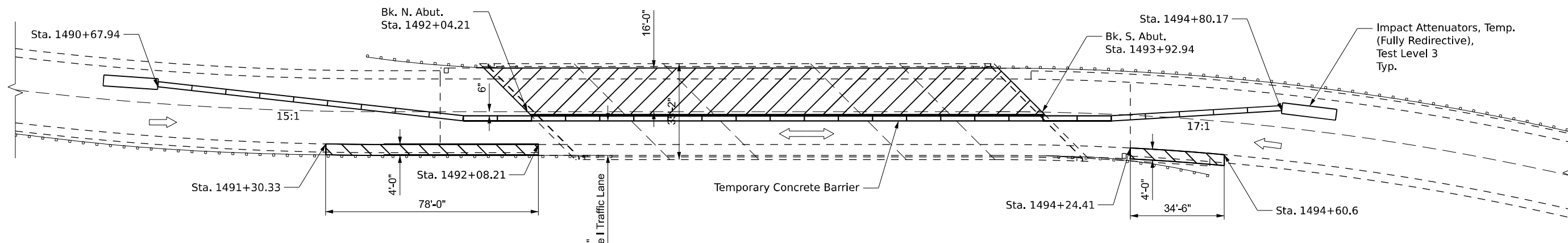
SCALE: 1/4" = 1'-0" SHEET 9 OF 25 SHEETS STA. TO STA.

F.A. RTE.	SECTION	COUNTY	TOTAL SHEETS	SHEET NO.
*	D9 BRIDGE OVERLAY 2023-5	**	25	9
CONTRACT NO. 78939				

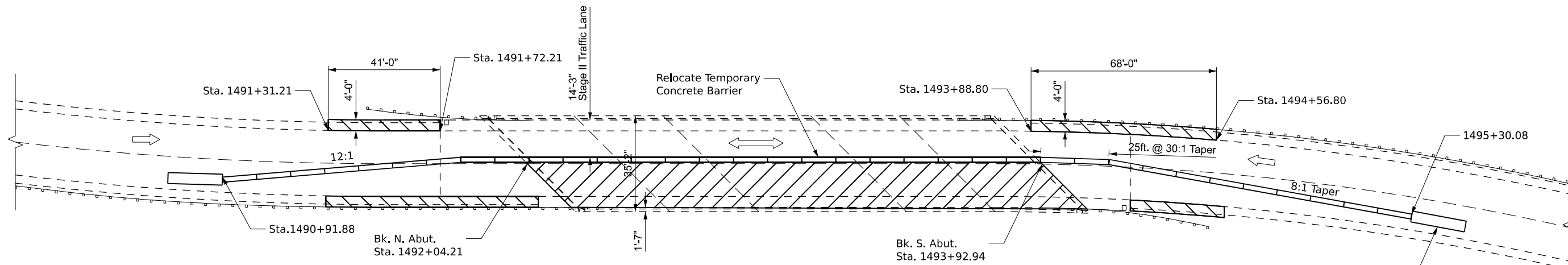
*FAP 726/FAP 873

ILLINOIS FED. AID PROJECT

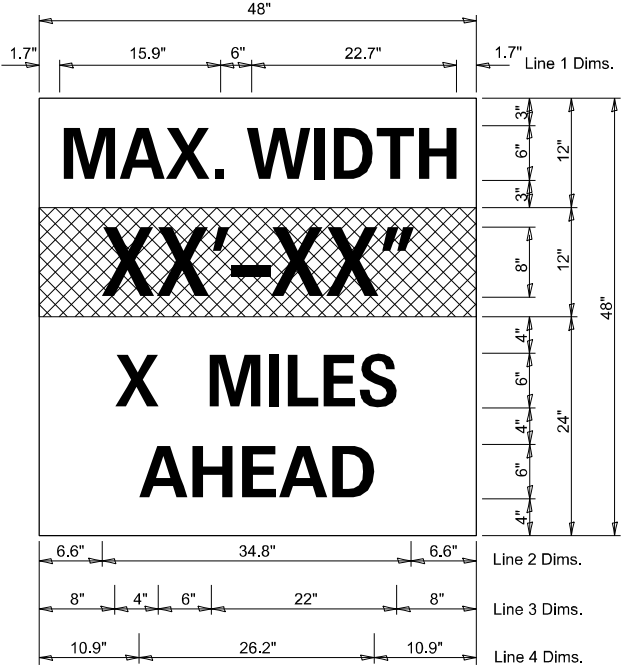
**JOHNSON/JACKSON



STAGE I TRAFFIC



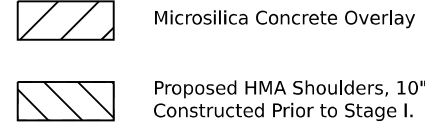
STAGE II TRAFFIC



W12-1103
 W12-1103, No Border
 "MAX WIDTH" 6D, No Border, Black on White
 "XX'-XX'" 8D, No Border, Black on Orange
 "X MILES" 6D, No Border, Black on White
 "AHEAD" 6D, No Border, Black on White

NOTES FOR MAX WIDTH SIGN

1. Install a Max Width Sign each direction on IL 37 to give traffic approaching work zone enough advance notice to change routes if needed. Exact locations as directed by the Engineer.
2. The Contractor shall furnish the posts and erect the signs at the locations directed by the Engineer. All signs shall be post mounted.
3. The noted work, including signs, posts, hardware and labor shall be included in the contract unit price, each, for Traffic Control and Protection Standard 701321. No other compensation will be allowed.
4. The width shown on the W12-1103 sign shall be 18" less than what is shown in the staged lane widths or as directed by the Engineer.
5. The "X" MILES AHEAD will be determined by the Engineer.



Notes:
 Removal of Existing HMA Pavement, Aggregate Shoulders, and Earth to construct HMA Shoulders, 10" will be paid for at the Contract Unit Price per Unit for Excavating and Grading Existing Shoulder.
 The HMA on the Approaches as shown on Sheet 20 of 25 will be installed after the Temporary Concrete Barrier is removed and will use Traffic Control and Protection Standard 701201.

MODEL: SN 044-0012 Staging [Sheet]
 FILE NAME: P:\Bids\044-0012\Staging\DOT\Office\Direct\BUREAU\Project\044-0012\DOT\Office\Design\044-0012-Design.dgn

USER NAME = David.A.Wilson	DESIGNED -	REVISED -
DRAWN -	REVISOR -	
PLOT SCALE = 0.16666633 / in.	CHECKED -	REVISOR -
PLOT DATE = 3/21/2023	DATE -	REVISOR -

**STATE OF ILLINOIS
 DEPARTMENT OF TRANSPORTATION**

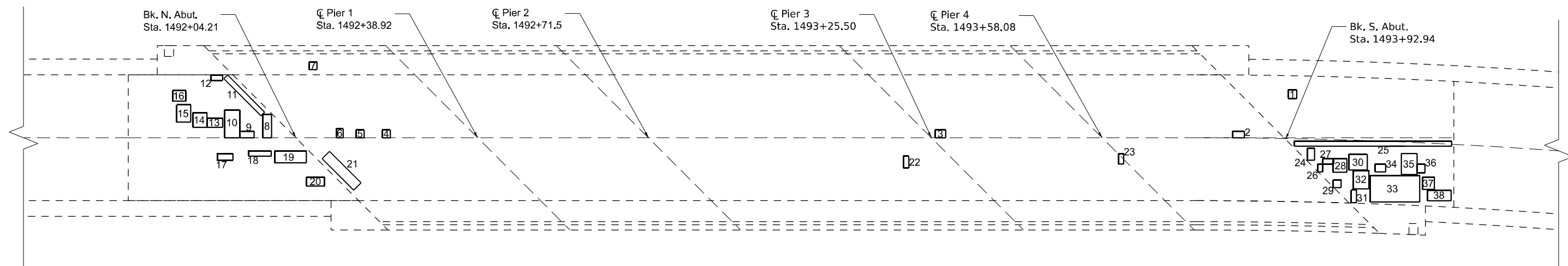
STAGING SN 044-0012

SCALE: 1" = 40' SHEET 10 OF 25 SHEETS STA. TO STA.

F.A. RTE.	SECTION	COUNTY	TOTAL SHEETS	SHEET NO.
*	D9 BRIDGE OVERLAY 2023-5	**	25	10
CONTRACT NO. 78939				

*FAP 726/FAP 873

**JOHNSON/JACKSON



APPROACH SLAB REPAIR (PARTIAL DEPTH)

Patch No.	Dist. From C (Ft.)	Length (Ft.)	Width (Ft.)	Area (Sq. Yd.)
1	7.5	1.6	1.6	0.3
8	0	1.7	4.5	0.9
9	0	2.7	1.2	0.4
10	0	2.8	5.3	1.7
11	5	1	10	1.1
12	12	2.2	1	0.3
13	2	3	1.7	0.6
14	2	2.7	2.7	0.8
15	3	2.7	3.3	1
16	7	2.5	2	0.6
17	3	3	1.3	0.4
18	2.5	4.4	1	0.5
19	2.5	6.1	2.3	1.6
20	7.5	3.5	1.7	0.7
24	2	1.3	2.3	0.3
25	2	30	1	3.3
26	5	1	1.5	0.2
27	4	2.1	1	0.2
28	4	2.6	2.6	0.8
29	8	1.5	1.5	0.3
30	4	3.5	3	1.2
31	11	1	2.4	0.3
32	6.5	3	3.5	1.2
33	8	9.5	5	5.3
34	5	2	1.5	0.3
35	3	3	4	0.3
36	5	1.5	1.7	0.3
37	8	2.3	2.3	0.6
38	10	4.5	2	1
Total				27

PARTIAL DEPTH DECK SLAB PATCHING (FOR INFORMATION ONLY)

Patch No.	Dist. From C (Ft.)	Length (Ft.)	Width (Ft.)
2	0	2.9	1.5
3	0	1.6	1.6
4	2.3	2.7	2.7
5	3	1.2	2
6	1	2.7	2.3
7	4	1.8	1.4
21	5.5	1.6	2.2
22	11	1.5	2
23	1	1.5	1.6

BILL OF MATERIAL

ITEM	UNIT	TOTAL
Approach Slab Repair (Partial Depth)	Sq. Yd.	27

MODEL: SN 044-0012 Patching Details (Sheet)
 FILE NAME: P:\Bids\2023\11\11\DOT\Documents\DOT Office\District 9\ORD Project\78939\CAD\Drawings\DOT\78939-Design.dgn

USER NAME = David.A.Wilson	DESIGNED -	REVISED -
PLOT SCALE = 0.16666633' / in.	DRAWN -	REVISED -
PLOT DATE = 1/27/2023	CHECKED -	REVISED -
	DATE -	REVISED -

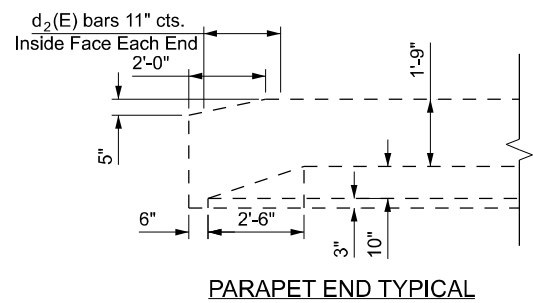
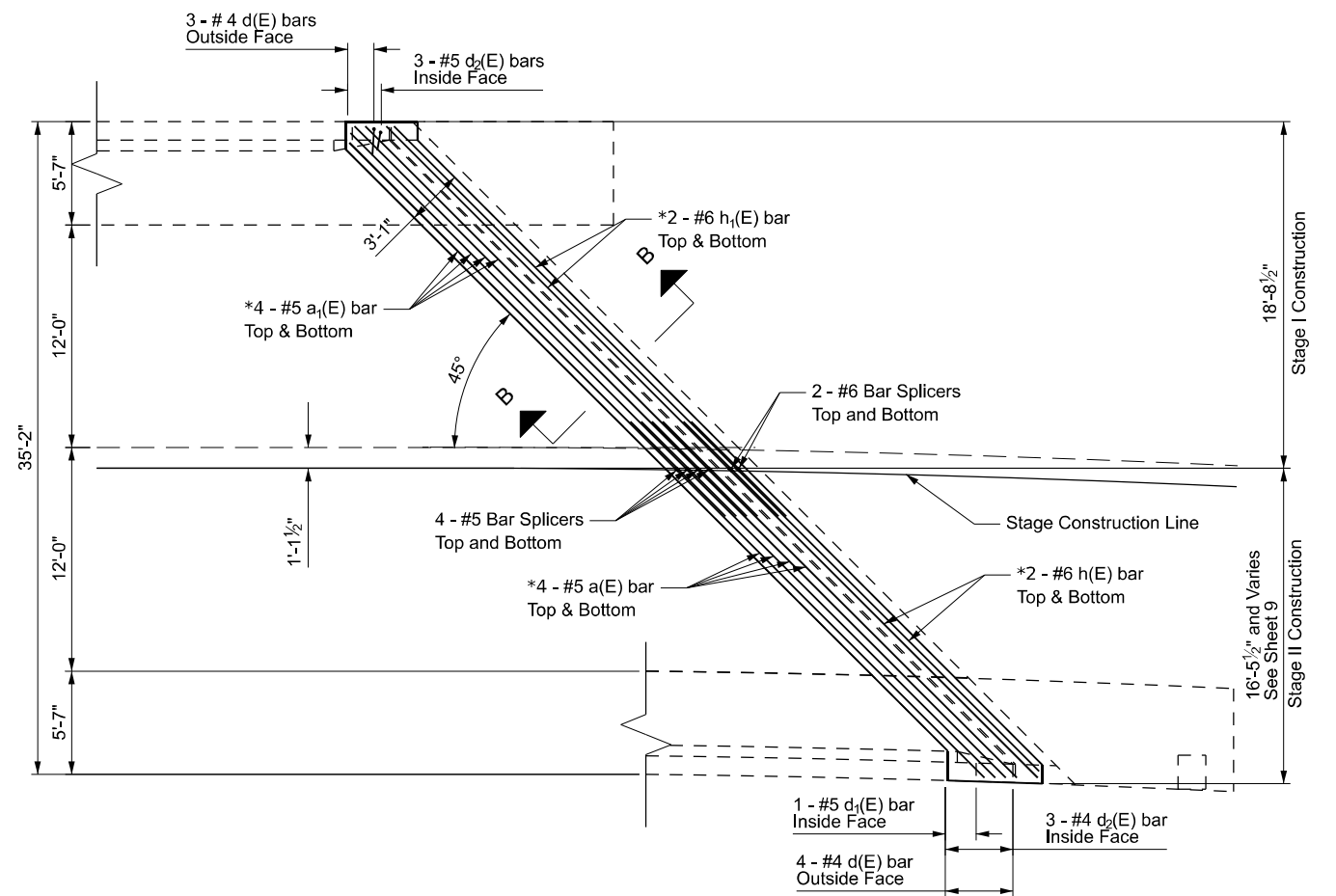
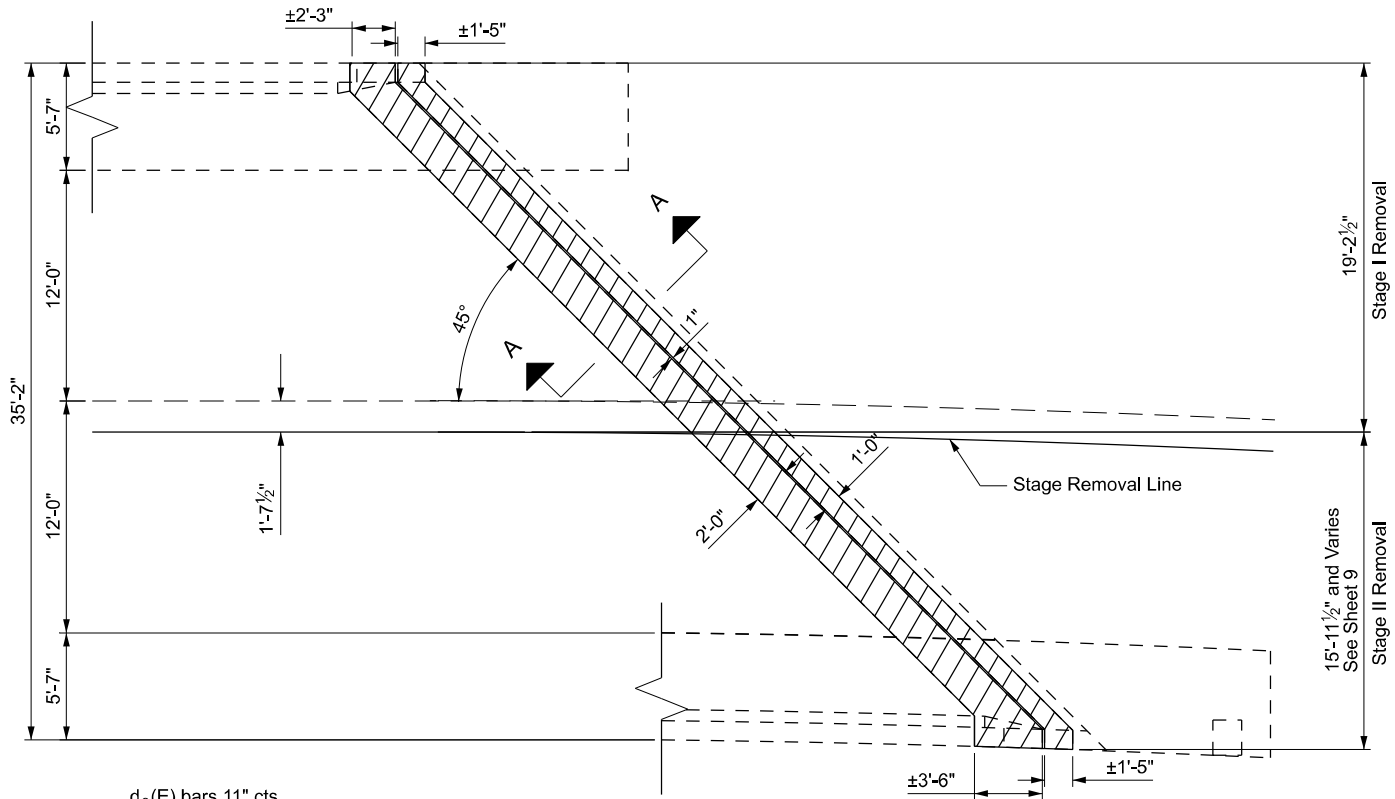
**STATE OF ILLINOIS
DEPARTMENT OF TRANSPORTATION**

PATCHING DETAILS SN 044-0012

SCALE: 1/8" = 1'-0" SHEET 11 OF 25 SHEETS STA. TO STA.

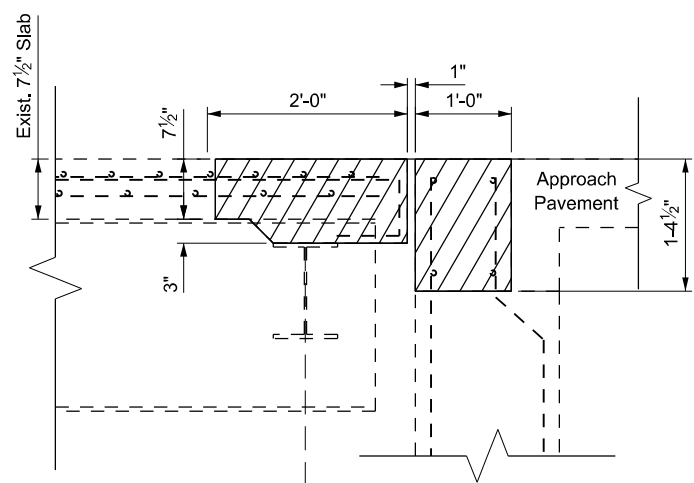
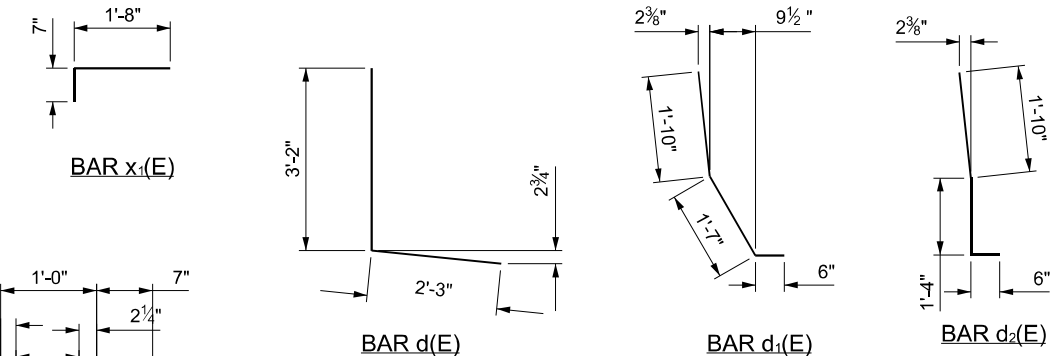
F.A. RTE.	SECTION	COUNTY	TOTAL SHEETS	SHEET NO.
*	D9 BRIDGE OVERLAY 2023-5	**	25	11
CONTRACT NO. 78939				
ILLINOIS		FED. AID PROJECT		**JOHNSON/JACKSON

*FAP 726/FAP 873

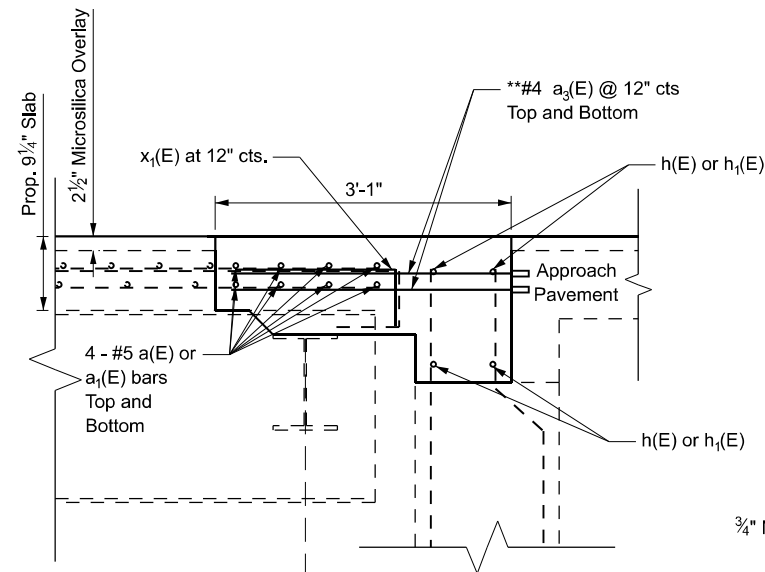


Concrete Removal

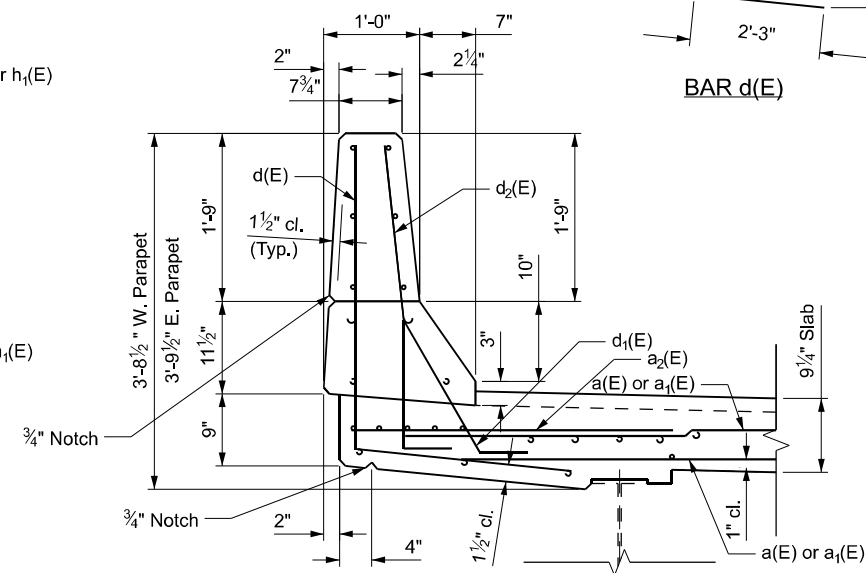
*Order h(E), h1(E), a(E) and a1(E) bars full length. Cut or bend to fit.
 **Epoxy grout 6" min. into Approach Slab in accordance to Art. 584 of Standard Specifications.



SECTION A-A
Dimensions @ Rt. Angles



SECTION B-B
Dimensions @ Rt. Angles



SECTION THRU PARAPET

BILL OF MATERIAL (SOUTH ABUT.)

Bar	No.	Size	Length	Shape	
a(E)	8	#5	23'-6"	—	
a1(E)	8	#5	26'-3"	—	
a2(E)	8	#6	6'-0"	—	
a3(E)	70	#4	3'-5"	—	
h(E)	4	#6	23'-6"	—	
h1(E)	4	#6	26'-3"	—	
d(E)	7	#4	5'-5"	L	
d1(E)	1	#5	3'-11"	L	
d2(E)	6	#5	3'-8"	L	
x1(E)	35	#5	2'-3"	L	
Bar Splicer				Each	12
Concrete Superstructure				Cu. Yd.	10.8
Concrete Removal				Cu. Yd.	9.6
Reinforcement Bars, Epoxy Coated				Pound	1090

MODEL: South Abutment Joint Elimination (Sheet)
 FILE NAME: P:\projects\2023\78939\Drawings\DOT Office\Drawings\DOT\78939\Drawings\DOT\78939-Sub\Rebar.dgn

USER NAME = David.A.Wilson	DESIGNED -	REVISED -
PLOT SCALE = 0.16666633 / in.	DRAWN -	REVISED -
PLOT DATE = 3/21/2023	CHECKED -	REVISED -
	DATE -	REVISED -

STATE OF ILLINOIS
DEPARTMENT OF TRANSPORTATION

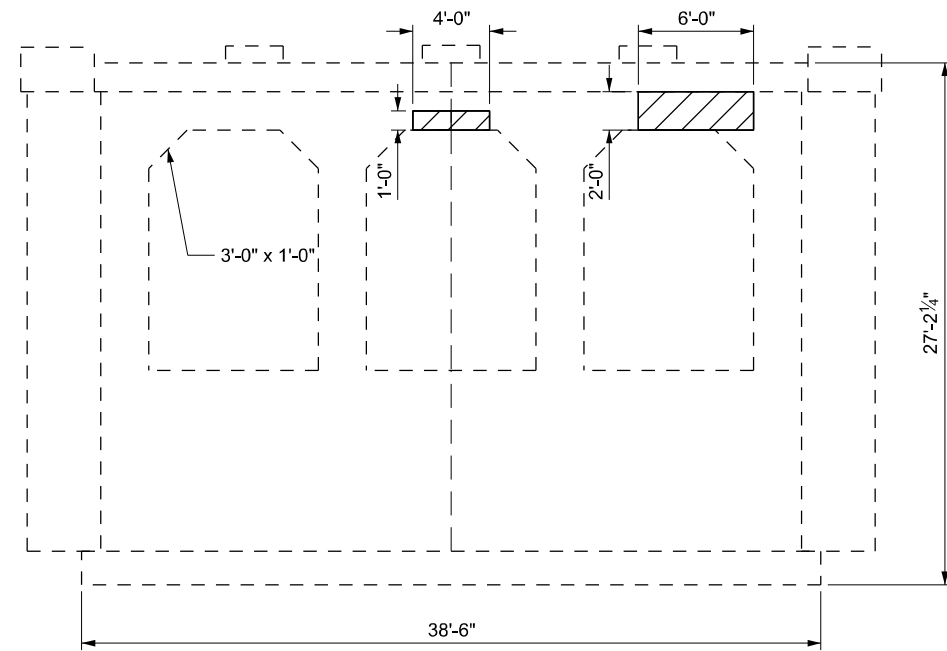
SOUTH ABUTMENT JOINT ELIMINATION
SN 044-0012

SCALING SCALE SHEET 13 OF 25 SHEETS STA. TO STA.

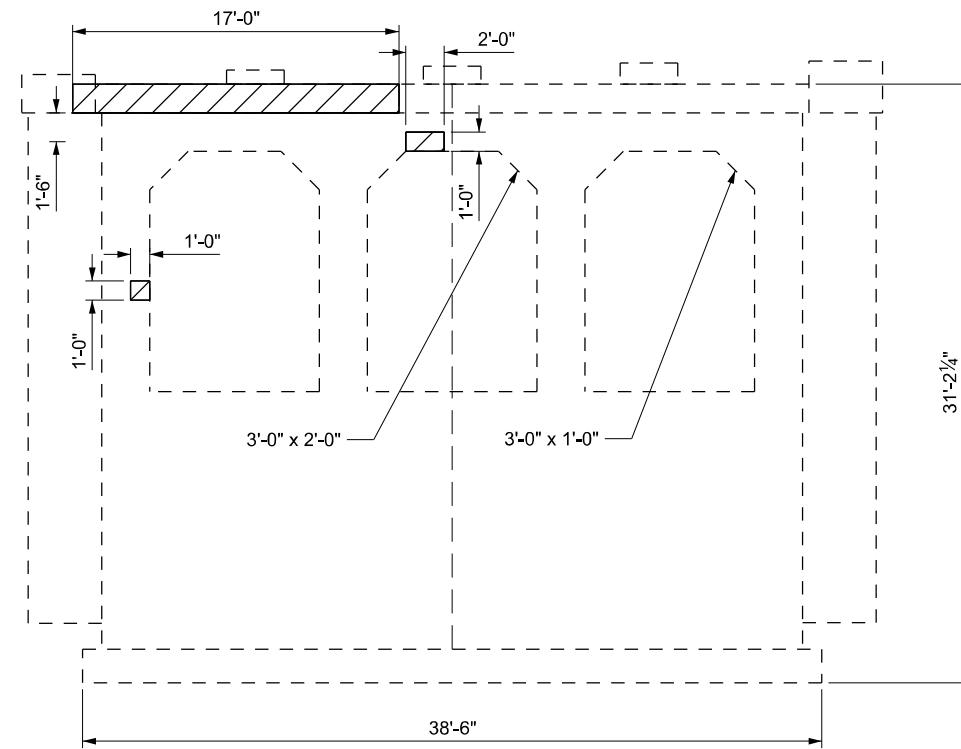
F.A. RTE.	SECTION	COUNTY	TOTAL SHEETS	SHEET NO.
*	D9 BRIDGE OVERLAY 2023-5	**	25	13
CONTRACT NO. 78939				

*FAP 726/FAP 873

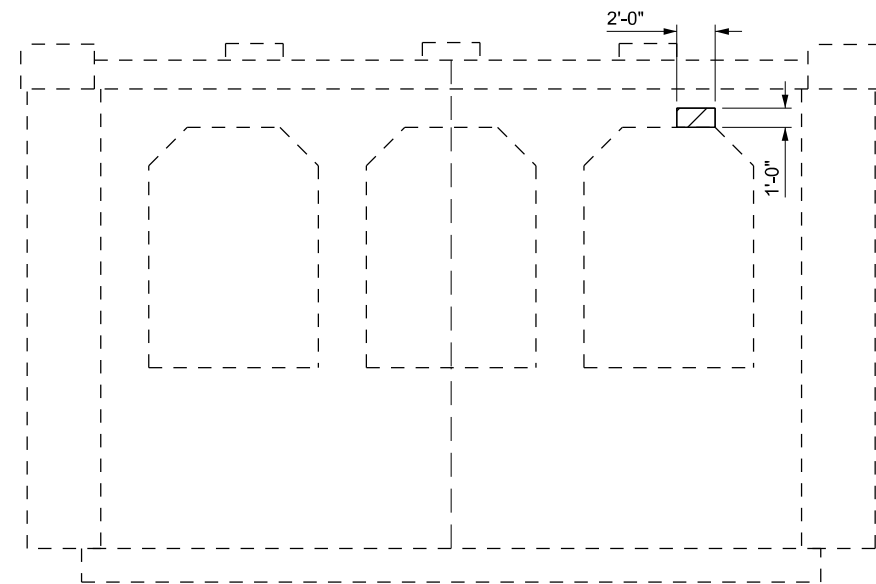
**JOHNSON/JACKSON



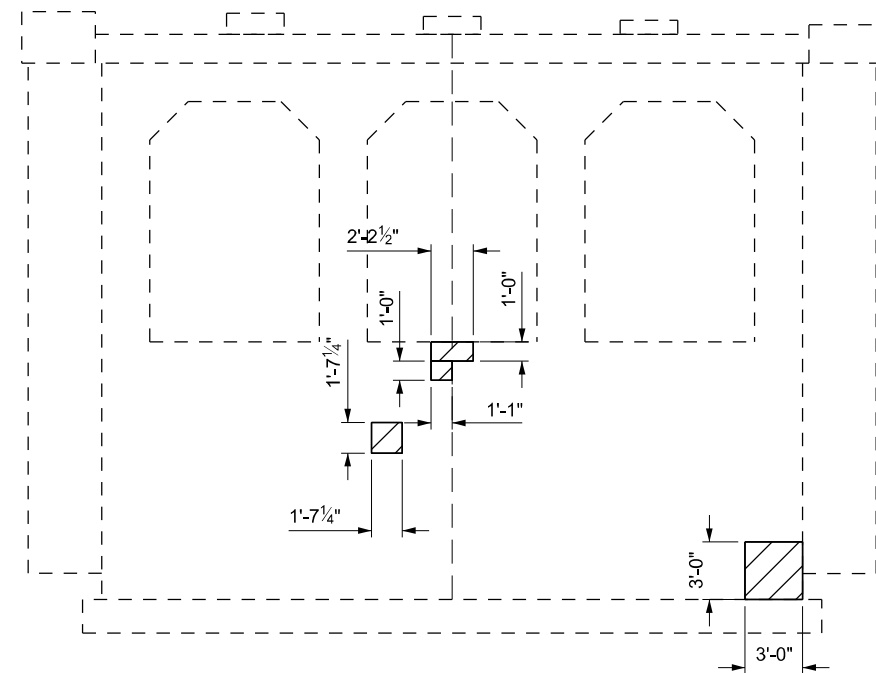
PIER 2 SOUTH FACE
(Looking North)



PIER 3 SOUTH FACE
(Looking North)



PIER 2 NORTH FACE
(Looking South)



PIER 3 NORTH FACE
(Looking South)

ITEM	UNIT	TOTAL
Structural Repair of Concrete ≤ 5"	Sq. Ft.	50.4

MODEL: S:\044-0012 Piers 2&3 Repairs (Sheet)
 FILE NAME: P:\Bids\2023\2023-05-17\DOT\Documents\DOT Office\District 9\ORD Project\78939\CAD\Drawings\0278939-Design.dgn

USER NAME = David.A.Wilson	DESIGNED -	REVISED -
DRAWN -	REVISED -	
PLOT SCALE = 0.16666633' / in.	CHECKED -	REVISED -
PLOT DATE = 1/27/2023	DATE -	REVISED -

STATE OF ILLINOIS
DEPARTMENT OF TRANSPORTATION

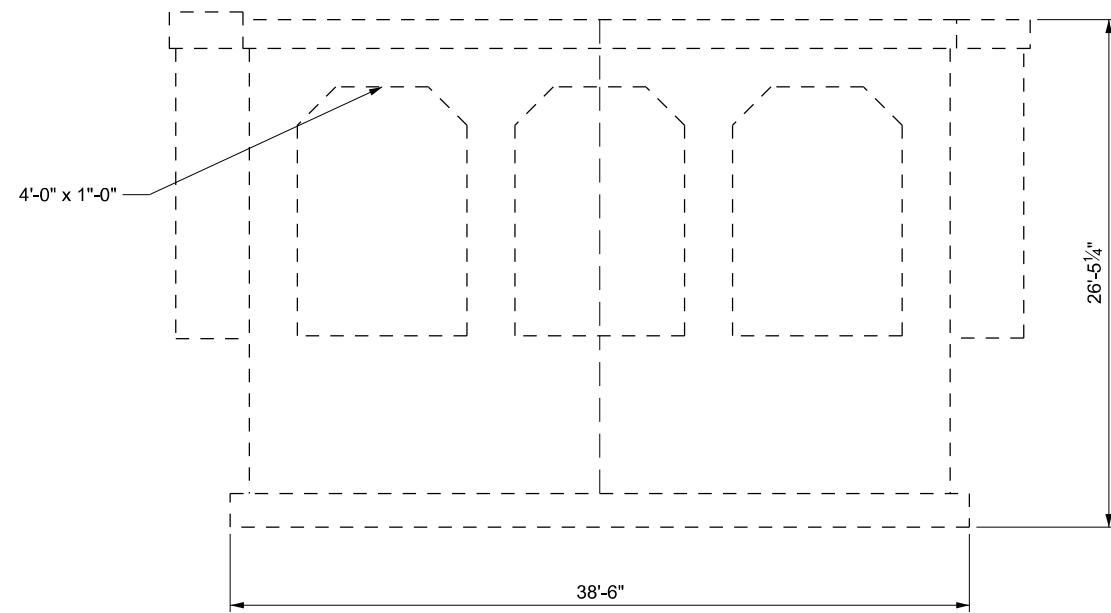
PIERS 2&3 REPAIRS SN 044-0012

SCALING SCALE SHEET 14 OF 25 SHEETS STA. TO STA.

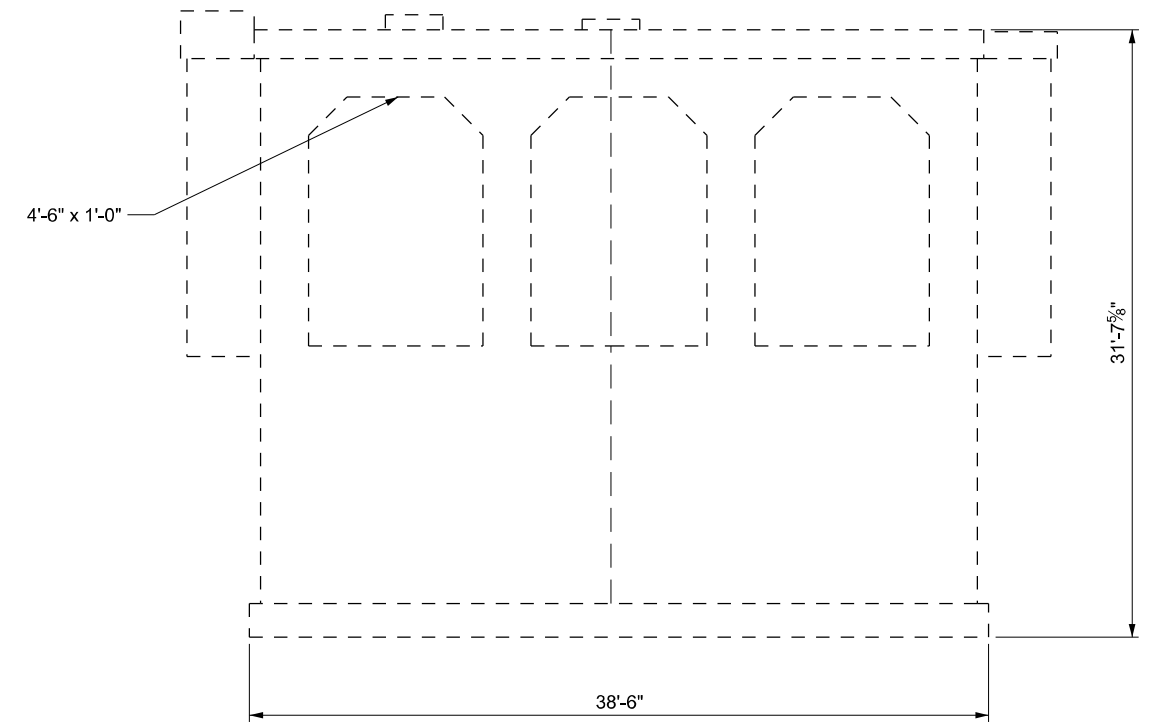
F.A. RTE.	SECTION	COUNTY	TOTAL SHEETS	SHEET NO.
*	D9 BRIDGE OVERLAY 2023-5	**	25	14
			CONTRACT NO. 78939	

*FAP 726/FAP 873

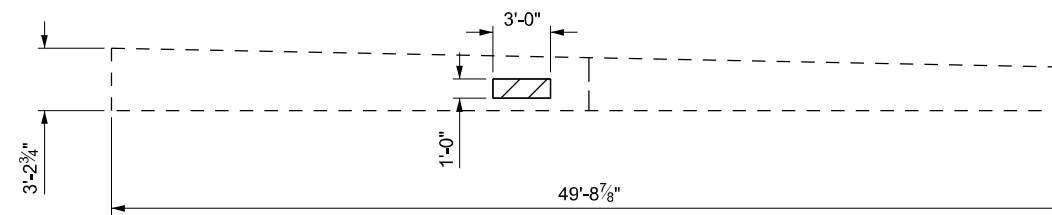
**JOHNSON/JACKSON



PIER 1 SOUTH FACE
(Looking North)



PIER 4 NORTH FACE
(Looking North)



NORTH ABUTMENT BACKWALL
(Looking North)

ITEM	UNIT	TOTAL
Structural Repair of Concrete ≤ 5"	Sq. Ft.	11.5

MODEL: S:\044\012 Piers 1 and 4 and North Abutment Repairs (Sheet)
 FILE NAME: P:\projects\044\012 Piers 1 and 4 and North Abutment Repairs\DOT Office\District 9\ORD Project\78939\CADD\Design\0278939-Design.dgn

USER NAME = David.A.Wilson	DESIGNED -	REVISED -
	DRAWN -	REVISED -
PLOT SCALE = 0.16666633' / in.	CHECKED -	REVISED -
PLOT DATE = 1/27/2023	DATE -	REVISED -

STATE OF ILLINOIS
DEPARTMENT OF TRANSPORTATION

PIERS 1&4 AND NORTH ABUTMENT REPAIRS
SN 044-0012

SCALE: NO SCALE SHEET 15 OF 25 SHEETS STA. TO STA.

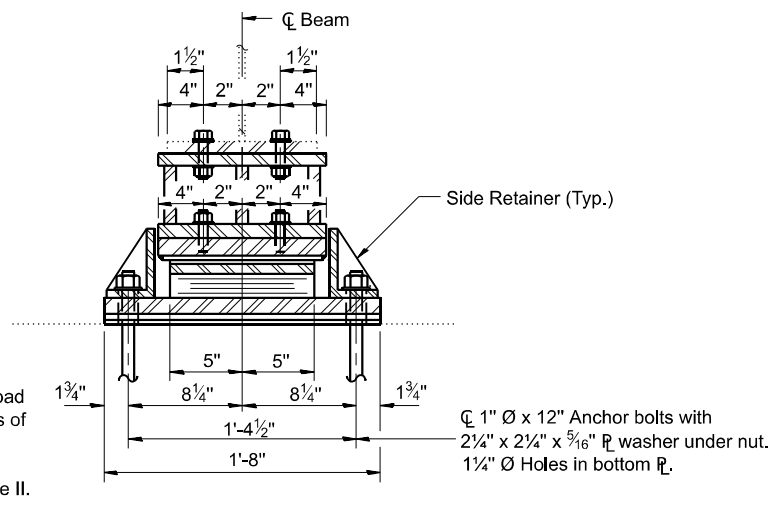
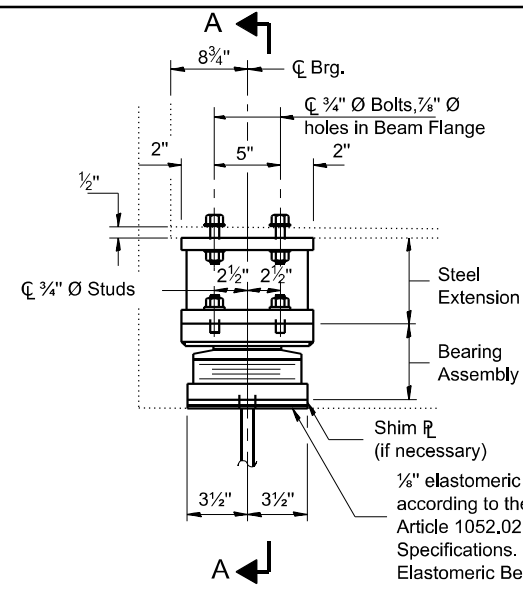
F.A. RTE.	SECTION	COUNTY	TOTAL SHEETS	SHEET NO.
*	D9 BRIDGE OVERLAY 2023-5	**	25	15
			CONTRACT NO. 78939	

*FAP 726/FAP 873

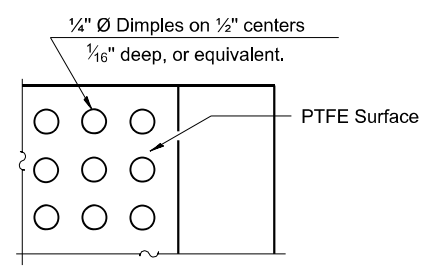
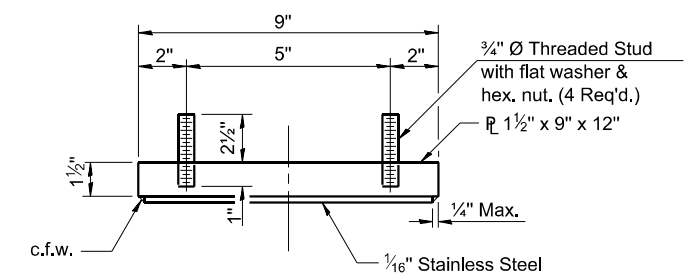
ILLINOIS FED. AID PROJECT

**JOHNSON/JACKSON

STATE OF ILLINOIS
DEPARTMENT OF TRANSPORTATION



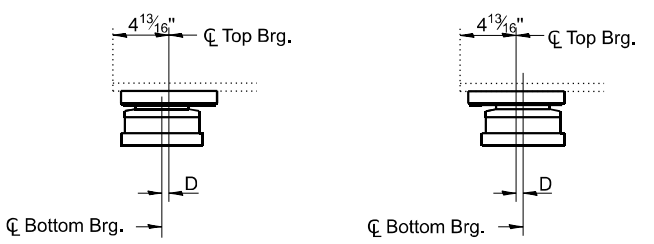
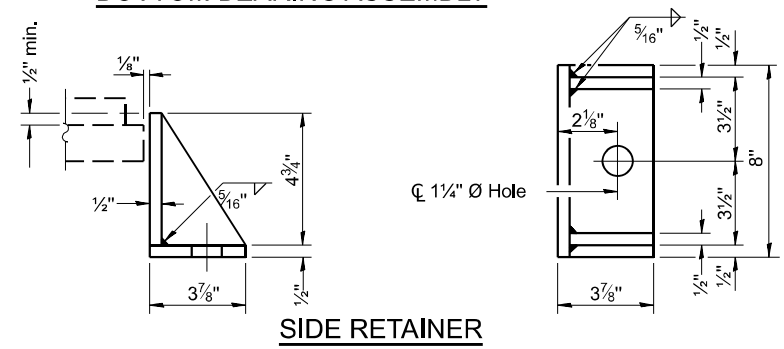
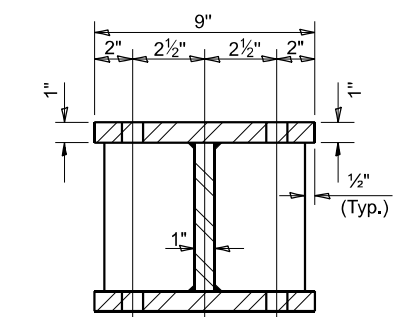
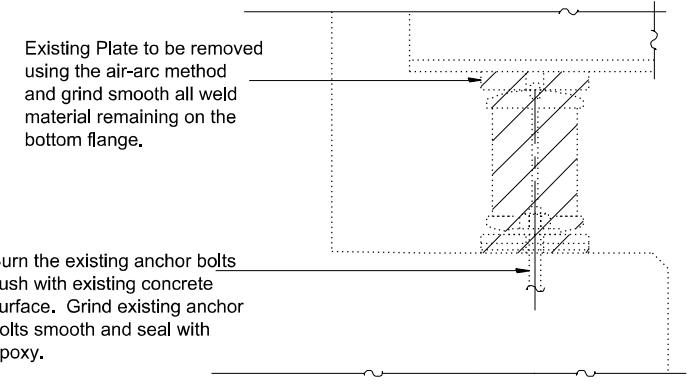
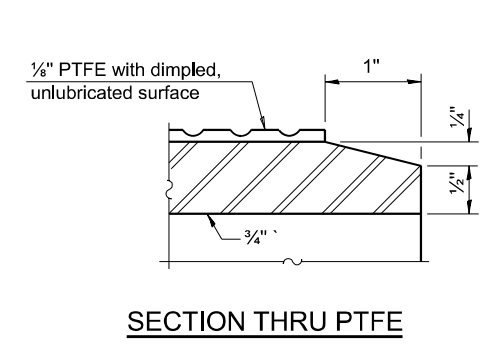
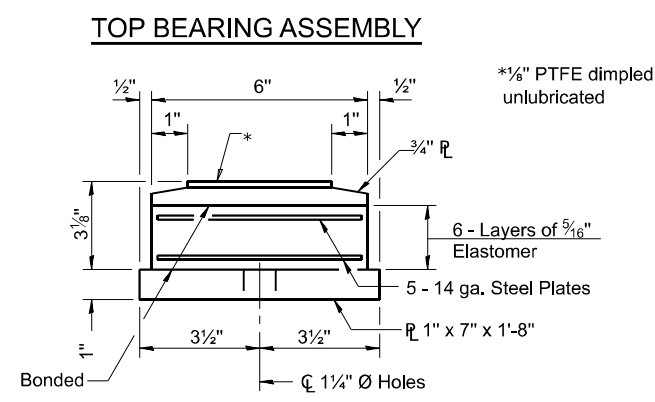
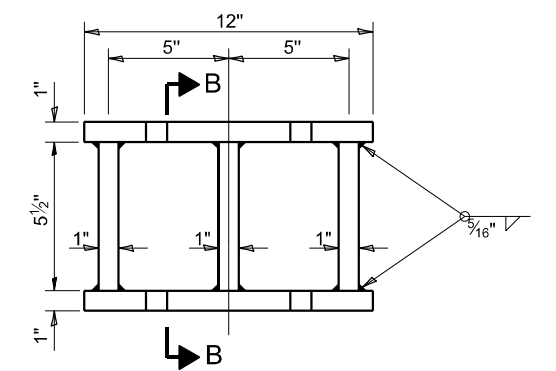
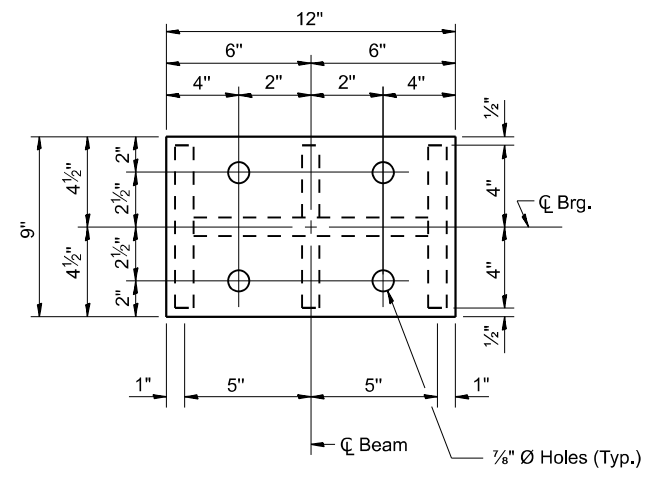
TYPE II ELASTOMERIC EXP. BRG.



GIRDER REACTIONS

R _l	(K)	14.5
R _t	(K)	32.2
Imp.	(K)	9.7
R (Total)	(K)	56.4

Notes:
Anchor bolts shall be ASTM F1554 all-thread (or an Engineer-approved alternate material) of the grade(s) and diameter(s) specified. ASTM A307 Grade C anchor bolts may be used in lieu of ASTM F1554 Grade 50 (F_y=50ksi). The corresponding specified grade of AASHTO M314 anchor bolts may be used in lieu of ASTM F1554.
Anchor bolts for Type II bearings shall be placed in holes drilled in the concrete through holes in the bottom bearing plate after members are in place. Side retainers shall be placed after bolts are installed.
Drilled and set anchor bolts shall be installed according to Article 521.06 of the Standard Specifications.
Side retainers and other steel members required for the bearing assembly shall be included in the cost of Elastomeric Bearing Assembly, Type II.
The 1/8" PTFE sheet shall be bonded directly to the top steel plate with a two-component, medium viscosity epoxy resin, conforming to the requirements of the Federal Specification MMM-A-134, Type I. The bond agent shall be applied on the full area of the contact surfaces.
Bonding of 1/8" PTFE sheet during vulcanizing process will be permitted provided the process and method of adjusting assembly height is approved by the Engineer.
The minimum jack capacity required is 35 Tons.
Existing diaphragm removal and reinstallation may be required to facilitate drilling holes, cost to be included with "Jack and Remove Existing Bearings".
Prior to ordering any material, the Contractor shall verify in the field all bearing height and shim thickness dimensions.
Two 1/2 in. adjusting shims shall be provided for each bearing in addition to all other plates or shims and placed as shown on bearing details.
New steel extensions, connection bolts, and Shim \bar{r} 's are included in "Furnishing and Erecting Structural Steel".



EXISTING BEARING REMOVAL DETAIL

Cost is included with Jack and Remove Existing Bearings

BILL OF MATERIAL

Item	Unit	Total
Elastomeric Bearing Assembly Type II	Each	5
Anchor Bolts, 1"	Each	10
Jack and Remove Existing Bearings	Each	5
Furnishing and Erecting Structural Steel	Pound	580

**NORTH ABUTMENT BEARING DETAILS
STRUCTURE NO. 044-0012**

USER NAME = David.A.Wilson	DESIGNED -	REVISED -
DRAWN -	REVISED -	REVISED -
PLOT SCALE = 0.16666633 / in.	CHECKED -	REVISED -
PLOT DATE = 3/21/2023	DATE -	REVISED -

**STATE OF ILLINOIS
DEPARTMENT OF TRANSPORTATION**

ELASTOMERIC BEARINGS SN 044-0012

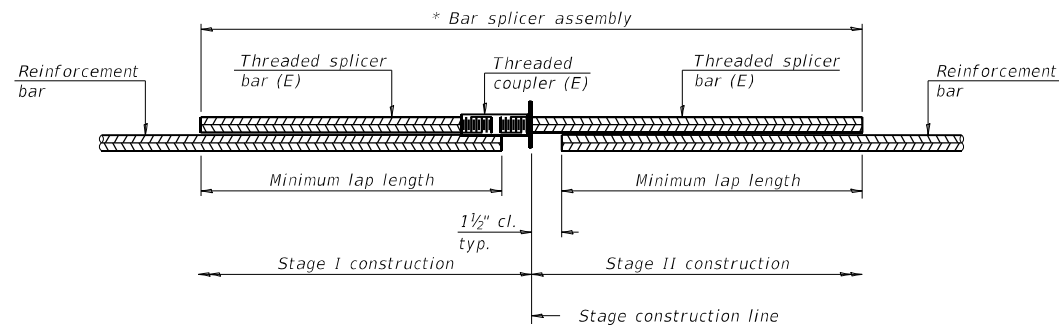
SCALING SCALE SHEET 16 OF 25 SHEETS STA. TO STA.

F.A. RTE.	SECTION	COUNTY	TOTAL SHEETS	SHEET NO.
*	D9 BRIDGE OVERLAY 2023-5	**	25	16
CONTRACT NO. 78939				
ILLINOIS FED. AID PROJECT				

*FAP 726/FAP 873

**JOHNSON/JACKSON

MODEL: SN 044-0012 Elastomeric Bearings (Sheet) FILE NAME: P:\Illinois\Projects\2023\044-0012\Documents\DOT Office\Direct\BORD Project\78939\CAD\Bearing\0278939-Design.dgn

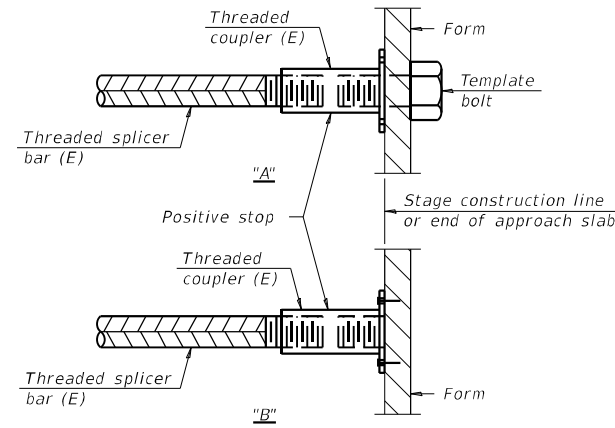


STANDARD BAR SPLICER ASSEMBLY PLAN
 (All components shall be provided from one supplier)

Threaded splicer bar length = min. lap length + 1 1/2" + thread length

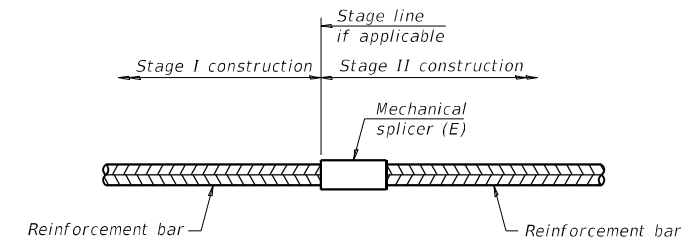
* Epoxy not required on Bar Splicer Assembly components used in conjunction with black bars.

Location	Bar size	No. assemblies required	Minimum lap length
Deck (N. Joint)	#5	8	3'-6"
Deck (N. Joint)	#6	4	4'-0"
Deck (S. Joint)	#5	8	3'-6"
Deck (S. Joint)	#6	4	4'-0"



INSTALLATION AND SETTING METHODS

"A": Set bar splicer assembly by means of a template bolt.
 "B": Set bar splicer assembly by nailing to wood forms or cementing to steel forms.
 (E) : Indicates epoxy coating.



STANDARD MECHANICAL SPLICER

Location	Bar size	No. assemblies required

Notes:
 Splicer bars shall be deformed with threaded ends and have a minimum 60 ksi yield strength.
 All reinforcement shall be lapped and tied to the splicer bars.
 Bar splicer assemblies shall be epoxy coated according to the requirements for reinforcement bars. See Section 508 of the Standard Specifications.
 See approved list of bar splicer assemblies and mechanical splicers for alternatives.

BAR SPLICER ASSEMBLY DETAILS
IL 37 OVER ABANDONED RAILROAD
F.A.P. RTE 726 - D9 BRIDGE OVERLAY 2023-5
JOHNSON COUNTY
STATION 1492+87.60
STRUCTURE NO. 044-0012

BSD-1 1-1-2020

MODEL: SN 044-0012 Bar Splicers (Sheet)
 FILE NAME: P:\Bids\2023\2023-05-01\DOT\Documents\DOT Office\District 9\ORD Project\78939\CADD\Bar Splicer\0278939-Design.dgn

USER NAME = David.A.Wilson	DESIGNED -	REVISED -
	DRAWN -	REVISED -
PLOT SCALE = 0.16666633' / in.	CHECKED -	REVISED -
PLOT DATE = 3/21/2023	DATE -	REVISED -

STATE OF ILLINOIS
DEPARTMENT OF TRANSPORTATION

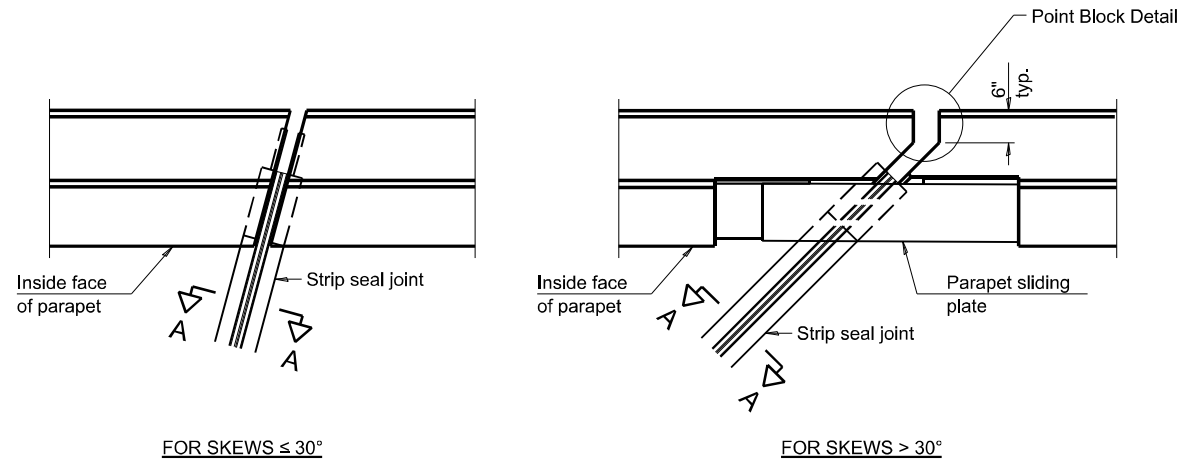
BAR SPLICERS SN 044-0012

SCALE: 1/8" = 1'-0" SHEET 17 OF 25 SHEETS STA. TO STA.

F.A. RTE.	SECTION	COUNTY	TOTAL SHEETS	SHEET NO.
*	D9 BRIDGE OVERLAY 2023-5	**	25	17
CONTRACT NO. 78939				

*FAP 726/FAP 873

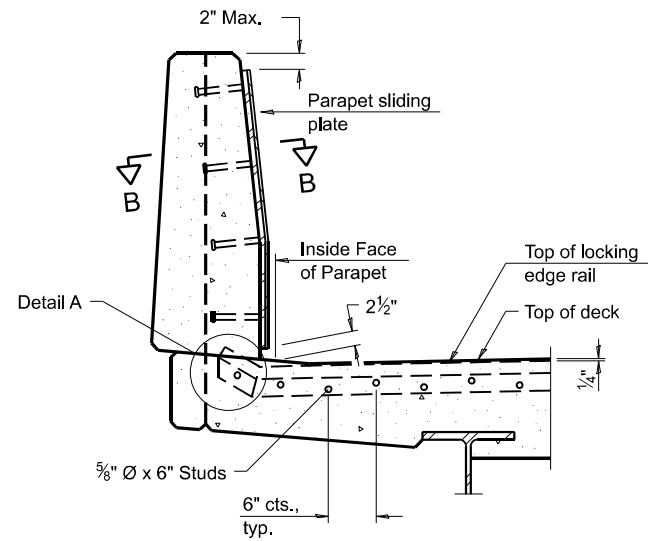
**JOHNSON/JACKSON



FOR SKEWS $\leq 30^\circ$

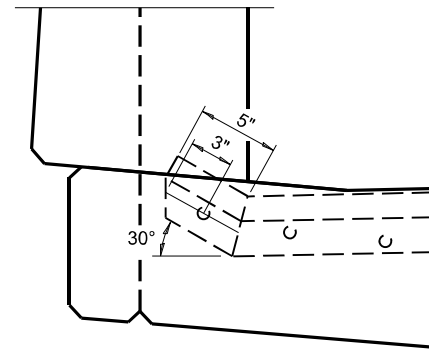
FOR SKEWS $> 30^\circ$

PLAN AT PARAPET

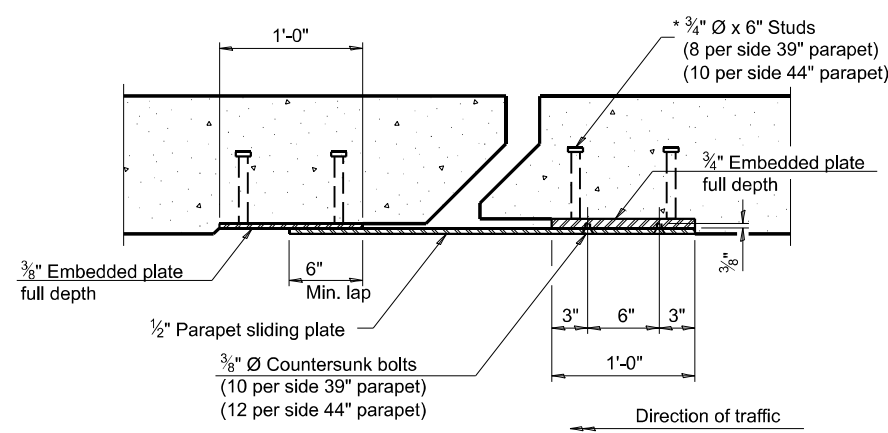


SECTION AT PARAPET

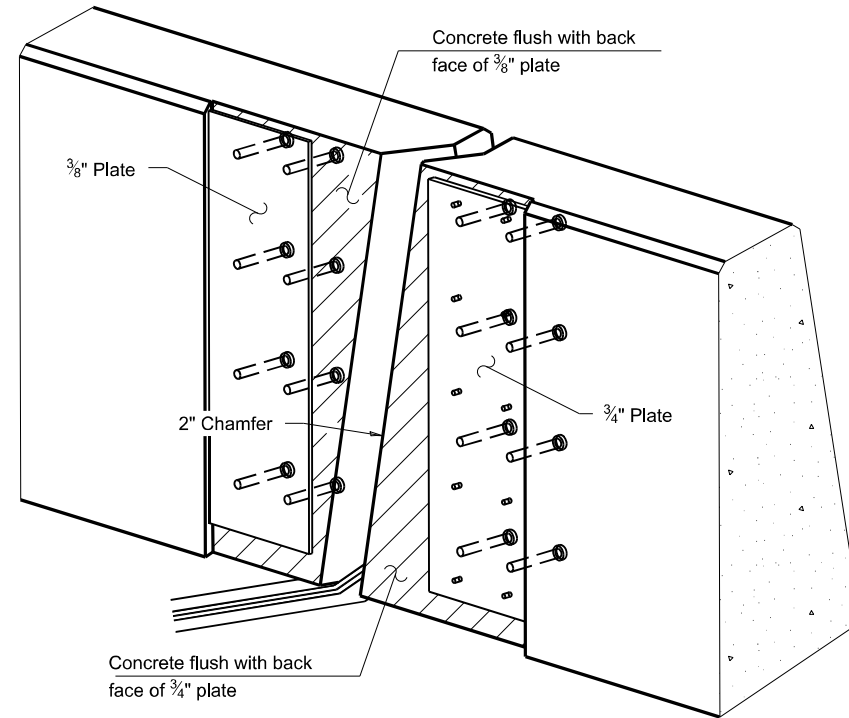
(Skews $> 30^\circ$ shown. Skews $\leq 30^\circ$ similar except as shown in plan view.)



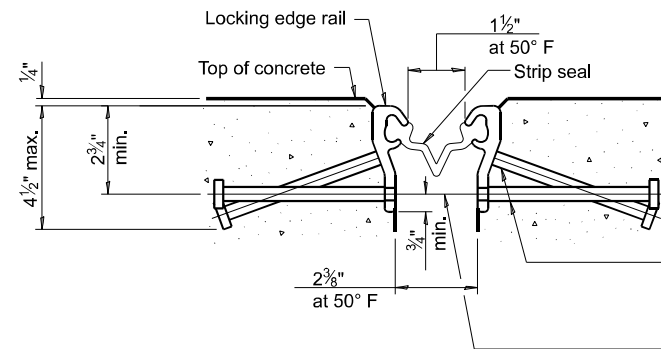
DETAIL A



SECTION B-B



TRIMETRIC VIEW
(Showing embedded plates only)



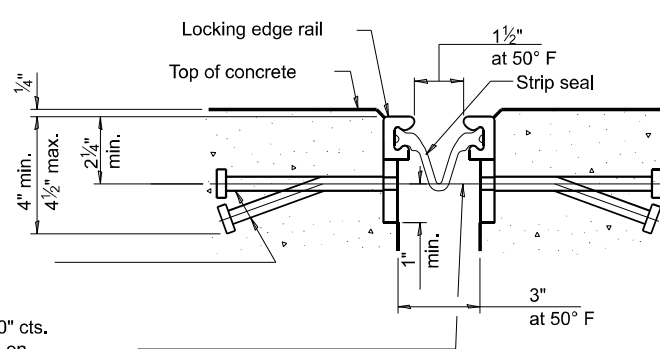
SHOWING ROLLED RAIL JOINT

* $5/8"$ \varnothing x 6" studs @ 6" cts. (alternate angled/bent studs with horizontal studs)

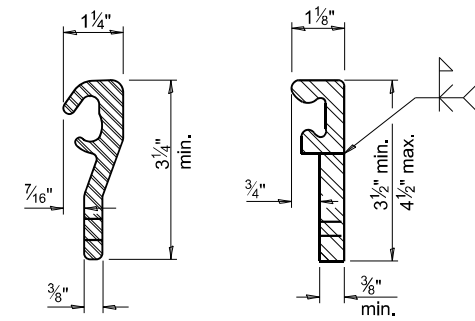
$5/8"$ \varnothing threaded rods in $7/16"$ \varnothing holes at $\pm 4'-0"$ cts. for holding the proper joint opening based on the temperature during the deck pour. Place to miss studs. All rods shall be burned, or sawed off flush with the plates after concrete is set.

SECTION A-A

* Granular or solid flux filled headed studs conforming to Article 1006.32 of the Std. Specs., automatically end welded.

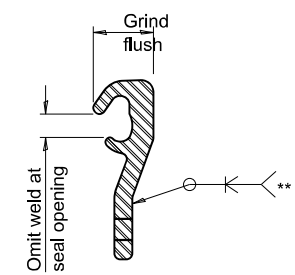


SHOWING WELDED RAIL JOINT



LOCKING EDGE RAILS

** Back gouge not required if complete joint penetration is verified by mock-up.



LOCKING EDGE RAIL SPLICE

The inside of the locking edge rail groove shall be free of weld residue. Rolled rail shown, welded rail similar.

BILL OF MATERIAL

Item	Unit	Total
Preformed Joint Strip Seal	Foot	50

Notes:

The strip seal shall be made continuous and shall have a minimum thickness of $1/4"$. The configuration of the strip seal shall match the configuration of the locking edge rails. Open or "webbed" strip seal gland configurations are not permitted. The gland shall be sized for a maximum rated movement of 4 inches.

The locking edge rails depicted are configured for typical applications and are conceptual only. The actual configuration of the locking edge rails and matching strip seal may vary from manufacturer to manufacturer provided they fit the application and meet the minimum anchorage shown. Flanged edge rails, however, will not be allowed. Locking edge rails may exceed the $4 1/2"$ maximum depth provided the anchorage system is revised according to the manufacturer's recommendation.

The manufacturer's recommended installation methods shall be followed.

All steel components shall be galvanized after fabrication according to Article 520.03 of the Standard Specifications.

The Maximum space between locking edge rail segments shall be c' and sealed with a suitable sealant; however, any rail joint within 10' measured perpendicular to the face of the curb or parapet shall be welded as shown in the locking edge rail splice detail.

Cost of parapet sliding plates, embedded plates, and anchorage studs included with Preformed Joint Strip Seal. 39" constant slope barrier shown, 44" constant slope barrier similar as noted.

The concrete opening below the strip seal will vary based on the locking edge rail chosen by the Contractor. Deck and parapet lengths shown elsewhere in the plans are dimensioned to the concrete opening, not the joint opening, and are based on the rolled locking edge rail. If the Contractor elects to use a different locking edge rail, dimensional adjustments may be required. One exception to this would be the strip seal joint at the end of the precast bridge approach slab. For these cases the pavement connector length shall be adjusted, not the length of the bridge approach slab.

MODEL: Preformed Joint Strip Seal SN 044-0012 (Sheet)
FILE NAME: P:\Bids\2023\2023-05\DOT\Documents\DOT Office\Direct\BORD Project\78939\CADD\Design\DOT\78939-Design.dgn

EJ-SS 1-1-2020

USER NAME = David.A.Wilson	DESIGNED -	REVISED -
PLOT SCALE = 0.16666633 / in.	DRAWN -	REVISED -
PLOT DATE = 3/21/2023	CHECKED -	REVISED -
	DATE -	REVISED -

STATE OF ILLINOIS
DEPARTMENT OF TRANSPORTATION

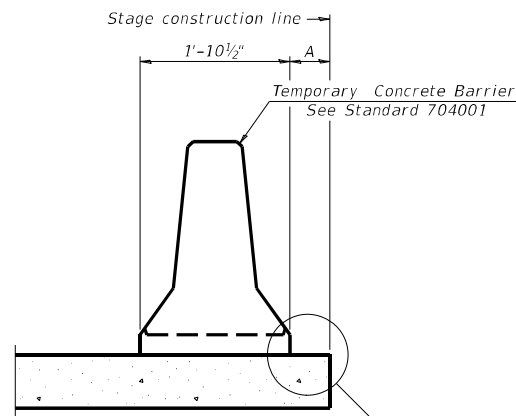
PREFORMED JOINT STRIP SEAL
SN 044-0012

SCALE: SHEET 18 OF 25 SHEETS STA. TO STA.

F.A. RTE.	SECTION	COUNTY	TOTAL SHEETS	SHEET NO.
*	D9 BRIDGE OVERLAY 2023-5	**	25	18
CONTRACT NO. 78939				

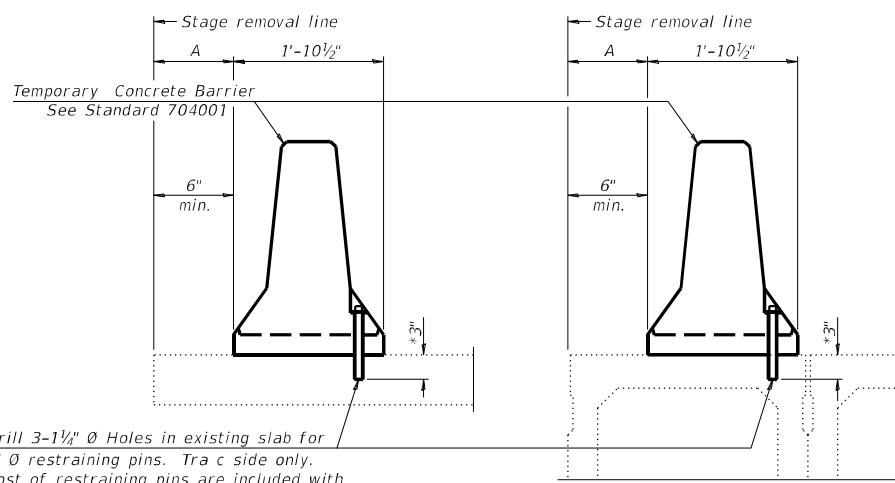
*FAP 726/FAP 873

**JOHNSON/JACKSON



When "A" is 3'-1" or less, the temporary concrete barrier shall be restrained to the new slab according to Detail I, II or III. No restraint is required when "A" is greater than 3'-1". See Detail I, II or III

NEW SLAB OR NEW DECK BEAM

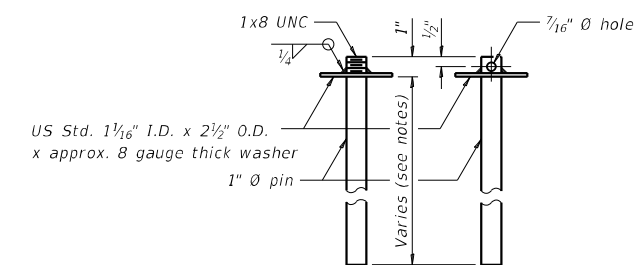


Drill 3-1/4" Ø Holes in existing slab for 1" Ø restraining pins. Tra c side only. Cost of restraining pins are included with Temporary Concrete Barrier. No restraint is required when "A" is greater than 3'-1".

EXISTING SLAB

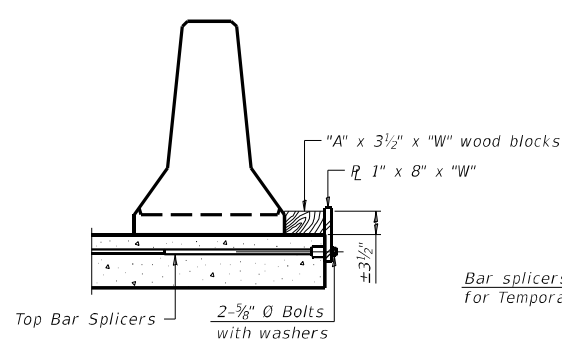
EXISTING DECK BEAM

SECTIONS THRU SLAB OR DECK BEAM

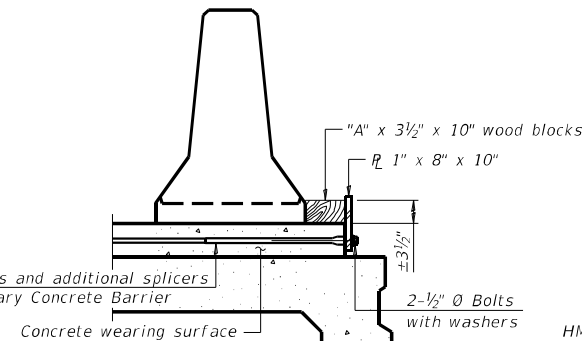


RESTRAINING PIN

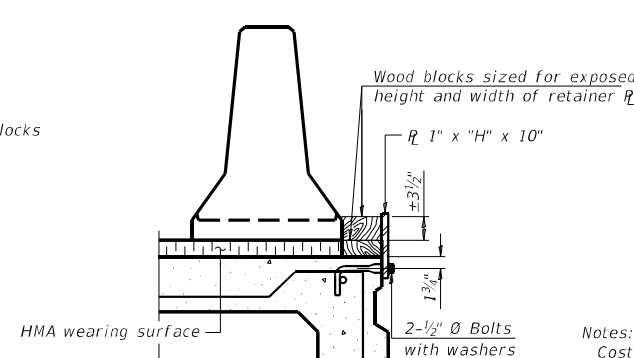
* When hot-mix asphalt wearing surface is present, embedment shall be 3" plus the wearing surface depth.



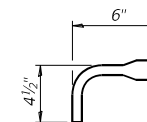
DETAIL I



DETAIL II



DETAIL III



BAR SPLICER FOR #4 BAR - DETAIL III

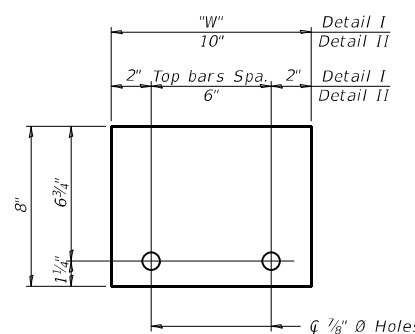
Notes:

Cost of retainer assembly is included with Temporary Concrete Barrier. A retainer assembly shall be located at the approximate C of each temporary concrete barrier. The retainer plate shall not be removed until the concrete on the adjacent stage is ready to be poured. For Detail III applications the retainer plate shall not be removed until just prior to placing the adjacent beam. When the 'A' dimension is less than 1 1/2', the wood block shall be omitted and the barrier shall be placed in direct contact with the steel retainer plate. For deck beam applications the minimum required 'A' distance is 6" to accommodate the shear key clamping device.

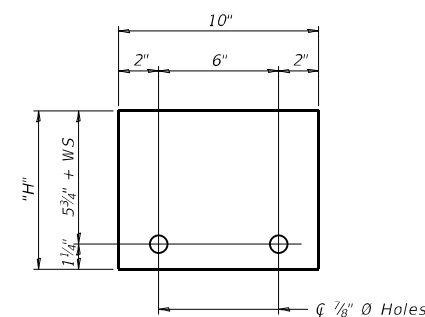
Detail I - Installation for a new bridge deck or bridge slab.

Detail II - Installation for a new deck beam with an initial concrete wearing surface. Additional bar splicers shall be provided at 6'-0" centers and paired with the bar splicers of the concrete wearing surface reinforcement to accommodate the installation of the retainer assemblies. The cost of the additional bar splicers is included with the concrete wearing surface.

Detail III - Installation for a new deck beam with no initial wearing surface or with an initial hot-mix asphalt (HMA) wearing surface present. The deck beam directly beneath the temporary concrete barrier shall be fabricated with bar splicer inserts in the side of the beam, as detailed, to accommodate the installation of the retainer assemblies. A pair of bar splicers, 6" apart, shall be placed at 6'-0" centers along the length of the beam. The cost of the bar splicers is included with the deck beam.



STEEL RETAINER R 1" x 8" x "W" (Detail I and II)



STEEL RETAINER R 1" x "H" x 10" (Detail III)

RAILING CRITERIA

NCHRP 350 Test Level	3
Railing Weight (plf)	440

R-27

10-12-2021

STATE OF ILLINOIS
DEPARTMENT OF TRANSPORTATION

TEMPORARY CONCRETE BARRIER
SN 044-0012

SCALE/NO SCALE SHEET 19 OF 25 SHEETS STA. TO STA.

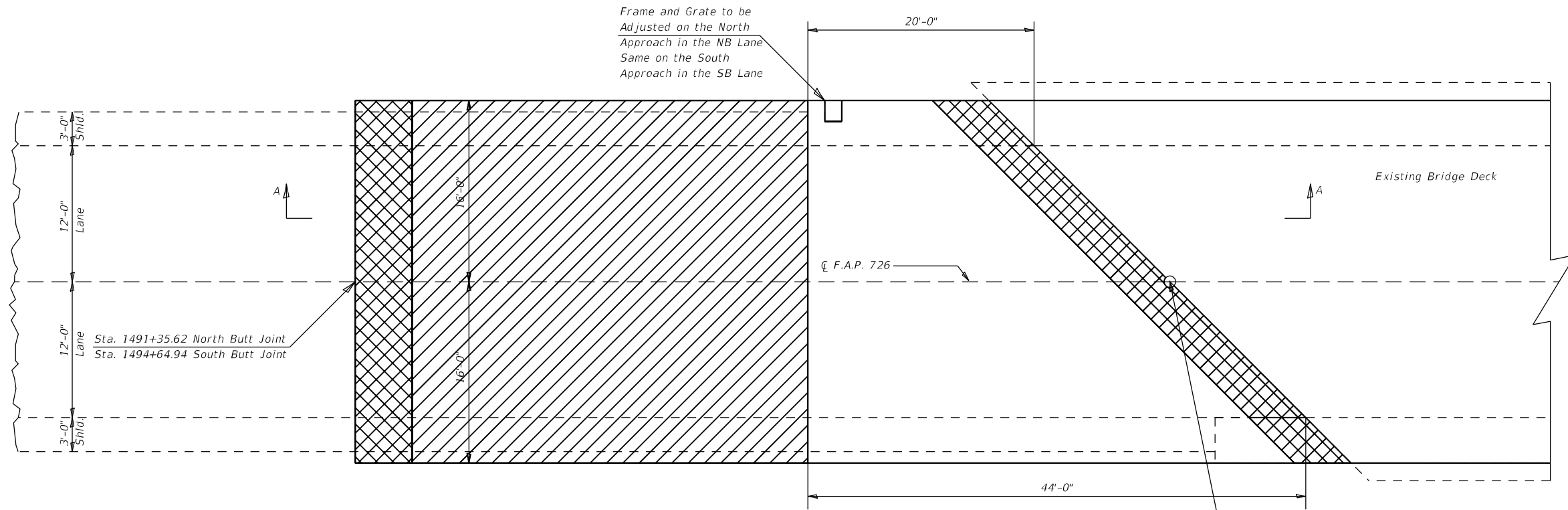
F.A.* RTE.	SECTION	COUNTY	TOTAL SHEETS	SHEET NO.
*	D9 BRIDGE OVERLAY 2023-5	**	25	19
CONTRACT NO. 78939				

*FAP 726/FAP 873

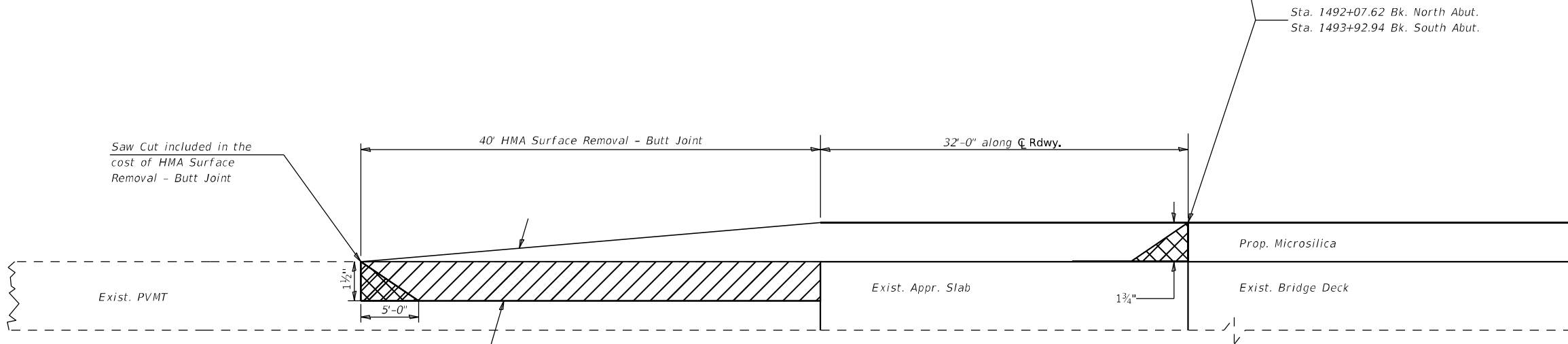
ILLINOIS FED. AID PROJECT

**JOHNSON/JACKSON

BUTT JOINT



PLAN



SECTION A-A

Temporary Ramp

Milling
Additional milling included in the quantity of HOT MIX ASPHALT SURFACE REMOVAL-BUTT JOINT.

MODEL: SN 044-0012 But. Joint (Sheet)
 FILE NAME: P:\Illinois\Projects\78939\CAD\Drawings\78939-CAD\Drawings\78939-Design\78939-Design.dgn

USER NAME = David.A.Wilson	DESIGNED -	REVISED -
PLOT SCALE = 0.16666633' / in.	DRAWN -	REVISED -
PLOT DATE = 1/27/2023	CHECKED -	REVISED -
	DATE -	REVISED -

**STATE OF ILLINOIS
DEPARTMENT OF TRANSPORTATION**

BUTT JOINT DETAILS SN 044-0012

SCALE: 1/4" = 1'-0" SHEET 20 OF 25 SHEETS STA. TO STA.

F.A. RTE.	SECTION	COUNTY	TOTAL SHEETS	SHEET NO.
*	D9 BRIDGE OVERLAY 2023-5	**	25	20
			CONTRACT NO. 78939	

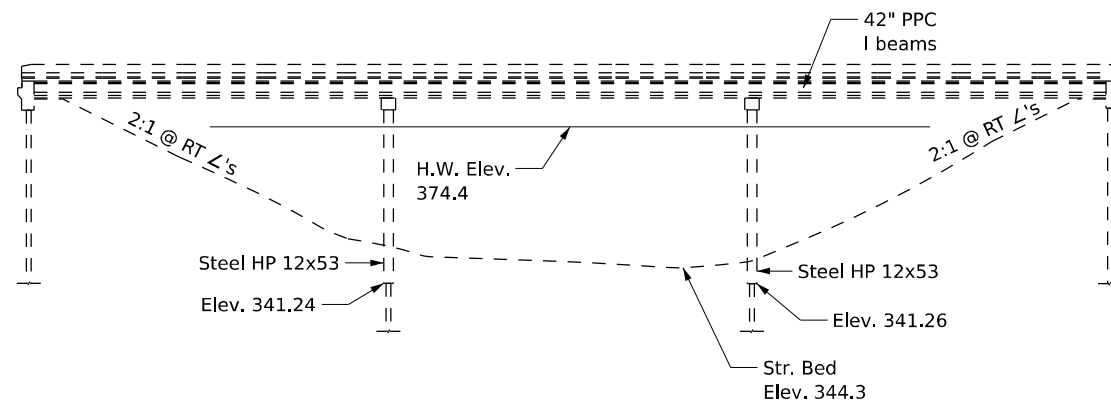
*FAP 726/FAP 873

ILLINOIS FED. AID PROJECT

**JOHNSON/JACKSON

GENERAL NOTES

Plan dimensions and details relative to existing plans are subject to nominal construction variations. The Contractor shall field verify existing dimensions and details affecting new construction and make necessary approved adjustments prior to construction or ordering materials. Such variations shall not be cause for additional compensation for a change in scope of work, however, the Contractor will be paid for the quantity actually furnished at the unit price bid for the work.

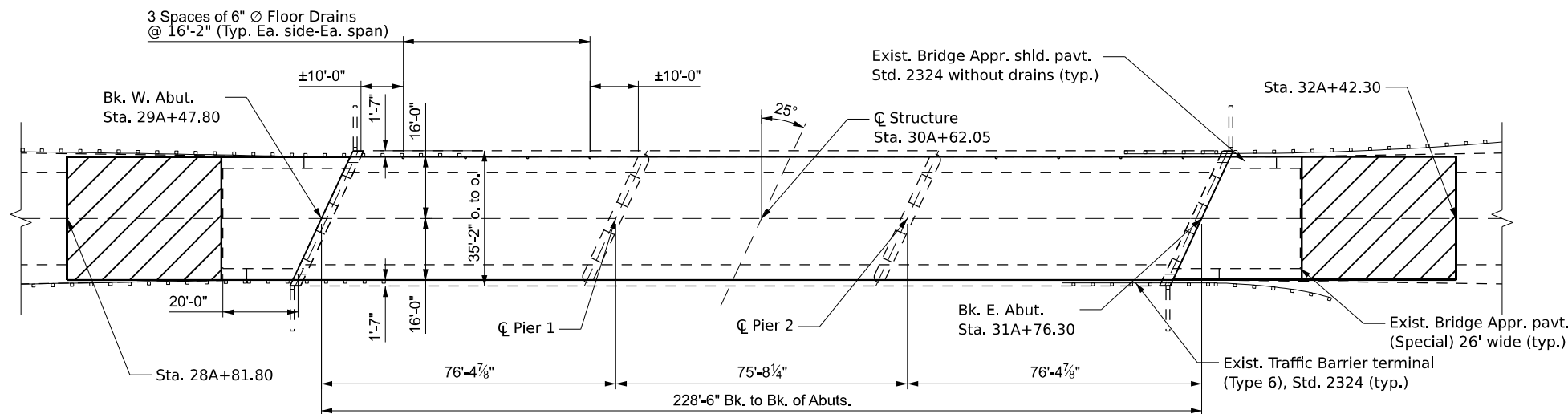


ELEVATION



TOTAL BILL OF MATERIAL

ITEM	UNIT	QUANTITY
Bridge Deck Grooving	Sq Yd	762
Protective Coat	Sq Yd	813
Approach Slab Repair (Partial Depth)	Sq Yd	24
Bridge Deck Scarification 3/4"	Sq Yd	813
Bridge Deck Microsilica Concrete Overlay 2 1/2"	Sq Yd	813
Structural Repair of Concrete (Depth ≤ 5")	Sq Ft	1.8

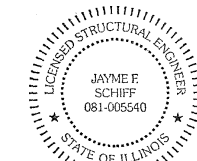


PLAN

Surface Removal Butt Joint

SCOPE OF WORK

- 1) Scarify and Microsilica Overlay
- 2) Approach Patching



EXPIRES 11-3--2024

Jayme F. Schiff

**BRIDGE REPAIRS
 IL 149 (FAP 873)
 LITTLE MUDDY RIVER
 JACKSON COUNTY
 D9 BRIDGE OVERLAY 2023-5
 SN 039-0057**

MODEL: SN 039-0057 General Plan and Elevation (Sheet)
 FILE NAME: P:\Bids\2023\2023-05-01\DOT\DOT Documents\DOT Office\District 9\ORD Project\039-0057-GeneralPlan_and_Elevation.dgn

USER NAME = David.A.Wilson	DESIGNED -	REVISED -
PLOT SCALE = 0.16666633' / in.	DRAWN -	REVISED -
PLOT DATE = 3/21/2023	CHECKED -	REVISED -
	DATE -	REVISED -

**STATE OF ILLINOIS
 DEPARTMENT OF TRANSPORTATION**

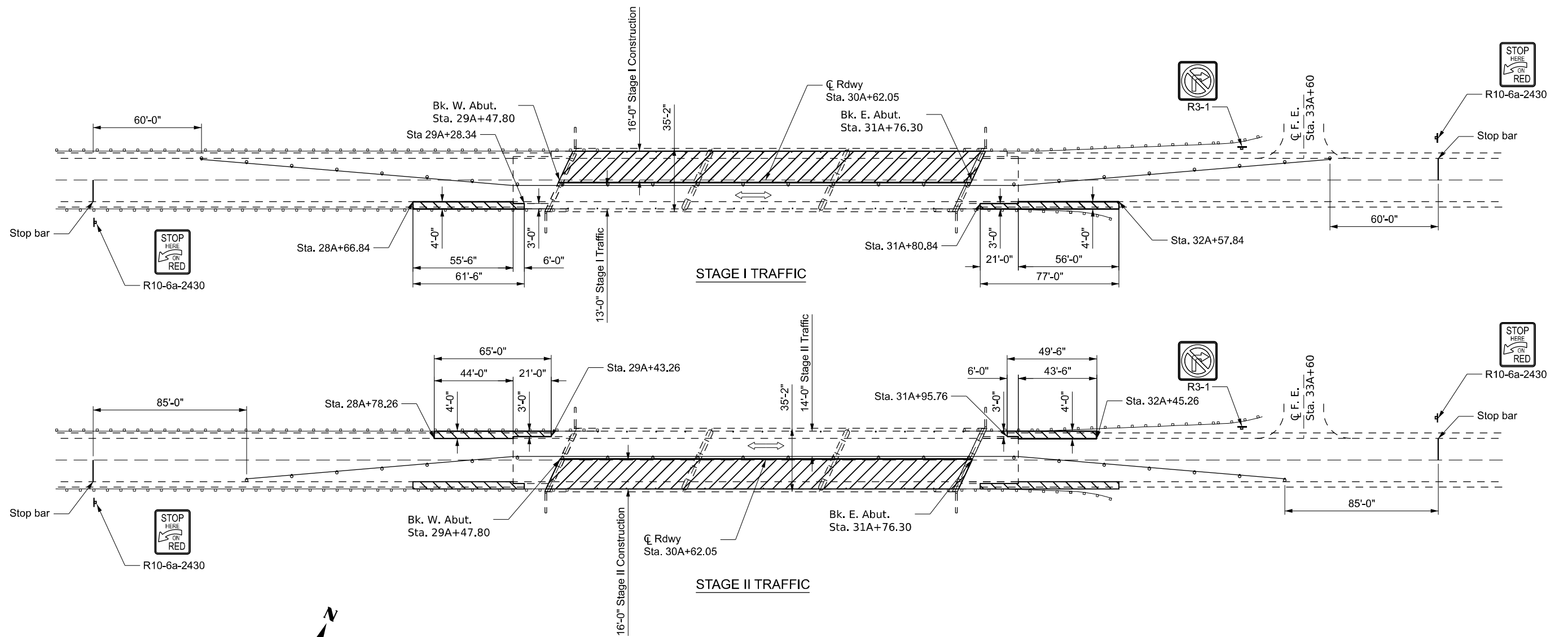
**GENERAL PLAN AND ELEVATION
 SN 039-0057**

SCALE: SHEET 21 OF 25 SHEETS STA. TO STA.

F.A. RTE.	SECTION	COUNTY	TOTAL SHEETS	SHEET NO.
*	D9 BRIDGE OVERLAY 2023-5	**	25	21
			CONTRACT NO. 78939	

*FAP 726/FAP 873

**JOHNSON/JACKSON



- Microsilica Concrete Overlay
- Proposed HMA Shoulders, 10". Constructed prior to Stage I.

Notes:
 REMOVAL OF EXISTING HMA PAVMENT, AGGREGATE SHOULDERS AND EARTH TO CONSTRUCT HMA SHOULDERS, 10" WILL BE PAID FOR AT THE CONTRACT UNIT PRICE PER UNIT FOR EXCAVATING AND GRADING EXISTING SHOULDER.

THE HMA ON THE APPROACHES AS SHOWN ON SHEET 25 OF 25 WILL BE INSTALLED USING TRAFFIC CONTROL AND PROTECTION STANDARD 701201.

MODEL: SN 039-0057 Staging [Sheet]
 FILE NAME: P:\Bids\2023\2023-05-15\DOT\Office\District 9\ORD Project\78939\CADD\Design\0278939-Design.dgn

USER NAME = David.A.Wilson	DESIGNED -	REVISED -
DRAWN -	REVISOR -	
PLOT SCALE = 0.16666633' / in.	CHECKED -	REVISOR -
PLOT DATE = 3/21/2023	DATE -	REVISOR -

**STATE OF ILLINOIS
 DEPARTMENT OF TRANSPORTATION**

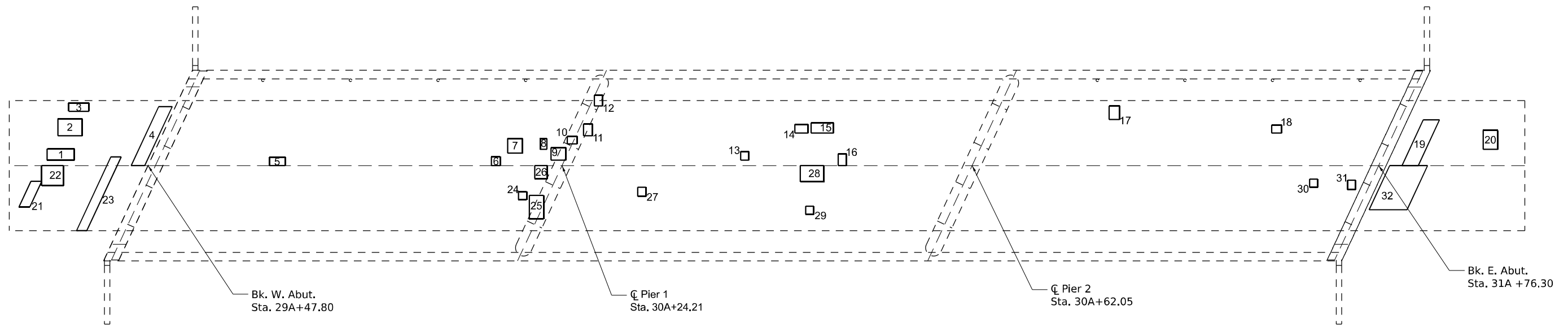
STAGING DETAILS SN 039-0057

SCALES: SHEET 23 OF 25 SHEETS STA. TO STA.

F.A. RTE.	SECTION	COUNTY	TOTAL SHEETS	SHEET NO.
*	D9 BRIDGE OVERLAY 2023-5	**	25	23
CONTRACT NO. 78939				

*FAP 726/FAP 873

**JOHNSON/JACKSON



APPROACH SLAB REPAIR (PARTIAL DEPTH)

Patch No.	Dist. From C (Ft.)	Length (Ft.)	Width (Ft.)	Area (Sq. Yd.)
1	1	5	2.1	1.2
2	5.5	4.5	3.1	1.6
3	10	3.7	1.5	0.6
4	0, on skew	2.5	12	3.3
19	0, on skew	3	9.3	3.1
20	3	2.7	3.5	1.1
21	2.9, on skew	2	5.2	1.2
22	0	4	3.7	1.6
23	0, on skew	1.9	15	3.2
32	0, on skew	7	9	7
Total				23.9

PARTIAL DEPTH DECK SLAB PATCHING (FOR INFORMATION ONLY)

Patch No.	Dist. From C (Ft.)	Length (Ft.)	Width (Ft.)
5	0	2.9	1.5
6	0	1.6	1.6
7	2.3	2.7	2.7
8	3	1.2	2
9	1	2.7	2.3
10	4	1.8	1.4
11	5.5	1.6	2.2
12	11	1.5	2
13	1	1.5	1.6
14	6	2.4	1.6
15	6	4.1	1.9
16	0	1.5	2.2
17	8.5	1.9	2.5
18	6	1.8	1.5
24	4.8	1.5	1.5
25	5.5	2.6	4.3
26	0	2.3	2.4
27	4	1.5	1.7
28	0	4.3	3
29	7.5	1.5	1.5
30	2.5	1.5	1.5
31	2.7	1.5	1.7

BILL OF MATERIAL

ITEM	UNIT	TOTAL
Approach Slab Repair (Partial Depth)	Sq. Yd.	23.9

MODEL: SN 039-0057 Patching Details (Sheet)
 FILE NAME: P:\Bids\2023\11\11\DOT\Documents\DOT Office\District 9\ORD Project\78939\CADD\Drawings\DOT\78939-Design.dgn

USER NAME = David.A.Wilson	DESIGNED -	REVISED -
PLOT SCALE = 0.16666633' / in.	DRAWN -	REVISED -
PLOT DATE = 1/27/2023	CHECKED -	REVISED -
	DATE -	REVISED -

STATE OF ILLINOIS
DEPARTMENT OF TRANSPORTATION

PATCHING DETAILS SN 039-0057

SCALING SCALE SHEET 24 OF 25 SHEETS STA. TO STA.

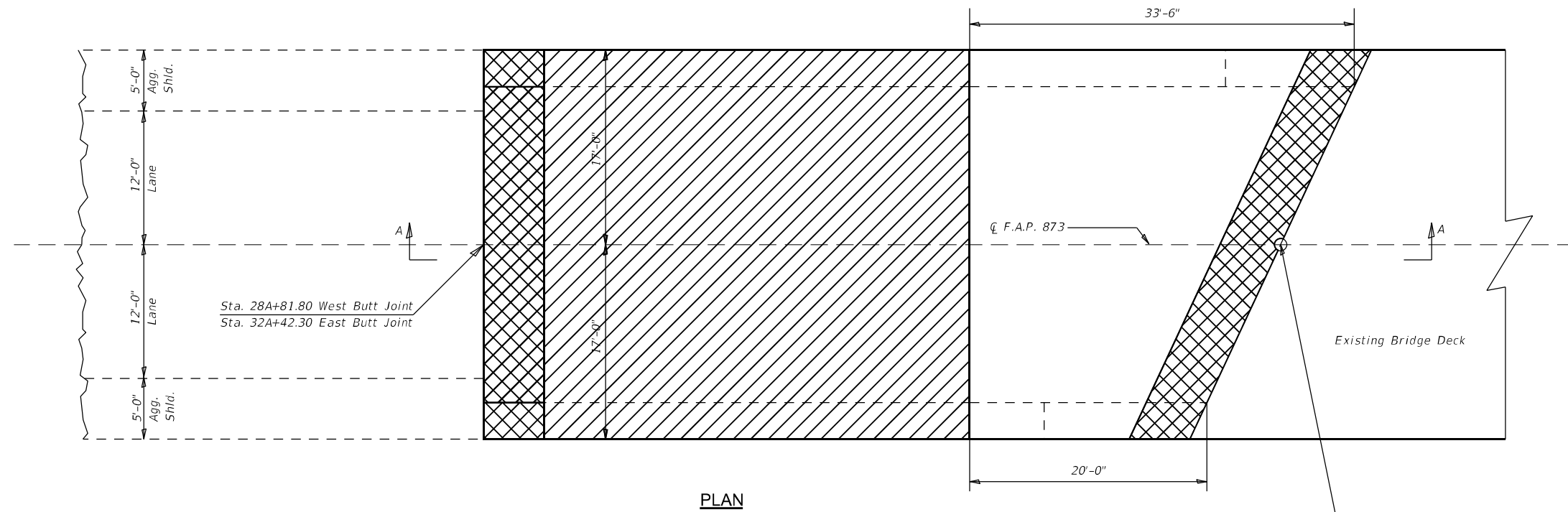
F.A. RTE.	SECTION	COUNTY	TOTAL SHEETS	SHEET NO.
*	D9 BRIDGE OVERLAY 2023-5	**	25	24

CONTRACT NO. 78939

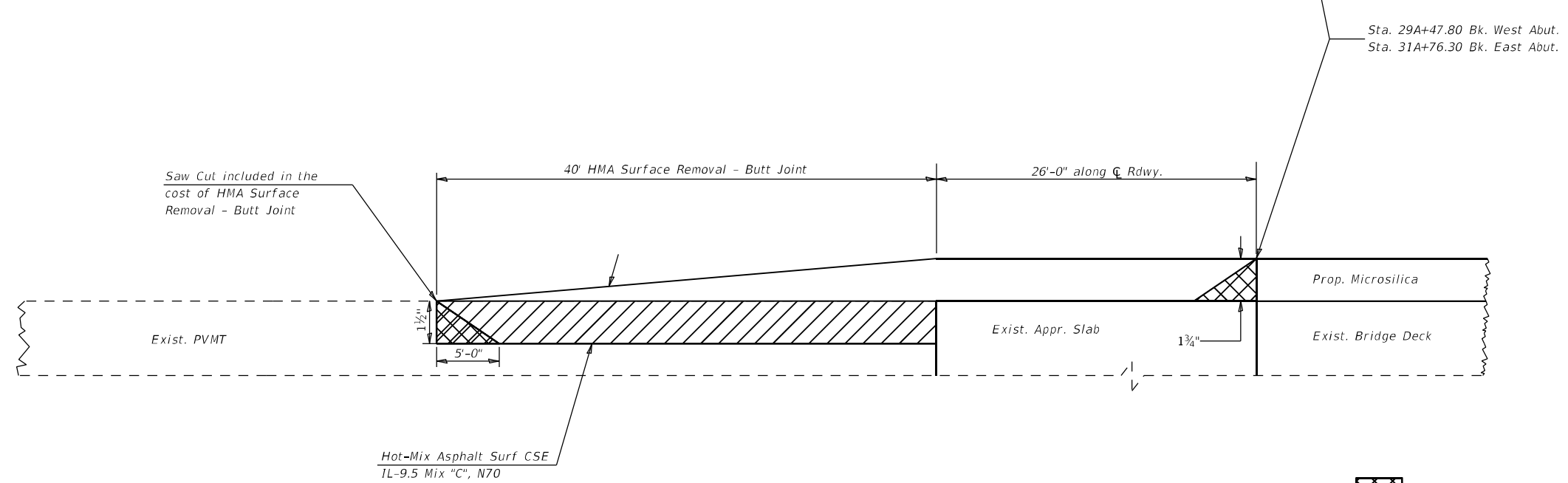
*FAP 726/FAP 873

**JOHNSON/JACKSON

BUTT JOINT



PLAN



SECTION A-A

Temporary Ramp

Milling
Additional milling included in the quantity of HOT MIX ASPHALT SURFACE REMOVAL-BUTT JOINT.

MODEL: SN 039-0057 Butt Joint (Sheet)
FILE NAME: P:\Illinois\Projects\2023\2023-05-01\DOT\Office\District 9\ORD Project\78939\CADD\Design\0278939-Design.dgn

USER NAME = David.A.Wilson	DESIGNED -	REVISED -
PLOT SCALE = 0.16666633' / in.	DRAWN -	REVISED -
PLOT DATE = 1/27/2023	CHECKED -	REVISED -
	DATE -	REVISED -

**STATE OF ILLINOIS
DEPARTMENT OF TRANSPORTATION**

BUTT JOINT DETAILS SN 039-0057

SCALE: 1/4" = 1'-0" SHEET 25 OF 25 SHEETS STA. TO STA.

F.A. RTE.	SECTION	COUNTY	TOTAL SHEETS	SHEET NO.
*	D9 BRIDGE OVERLAY 2023-5	**	25	25
CONTRACT NO. 78939				

*FAP 726/FAP 873

**JOHNSON/JACKSON