

04-28-2023 LETTING ITEM 089

STATE OF ILLINOIS  
DEPARTMENT OF TRANSPORTATION

PROPOSED  
HIGHWAY PLANS

F.A.P. ROUTE 805 (IL 161)  
SECTION (8Z,8Z-2)RS-2  
PROJECT NO. NHPP-STP-JFIL(271)  
ULTRA-THIN BONDED WEARING COURSE  
MARION COUNTY

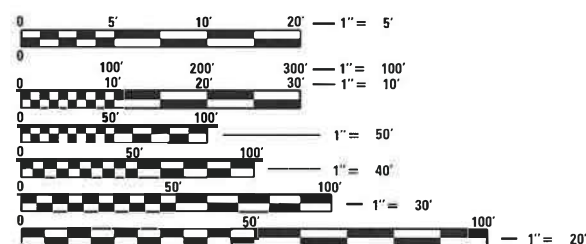
C-98-089-22

FOR INDEX OF SHEETS, SEE SHEET NO. 2

STATION EQUATION

STA. 948 + 03.17 BK = 18' LT 311 + 55.71 AH  
STA. 320 + 96.11 BK = 51 + 30.82 AH  
STA. 91 + 55.00 BK = STA. 291 + 53.72 AH  
STA. 311 + 43.49 BK = 18' RT 311 + 55.71 AH

BRIDGE OMISSION  
S.N. 061-0079  
STA. 888 + 93.18 TO STA. 901 + 04.42

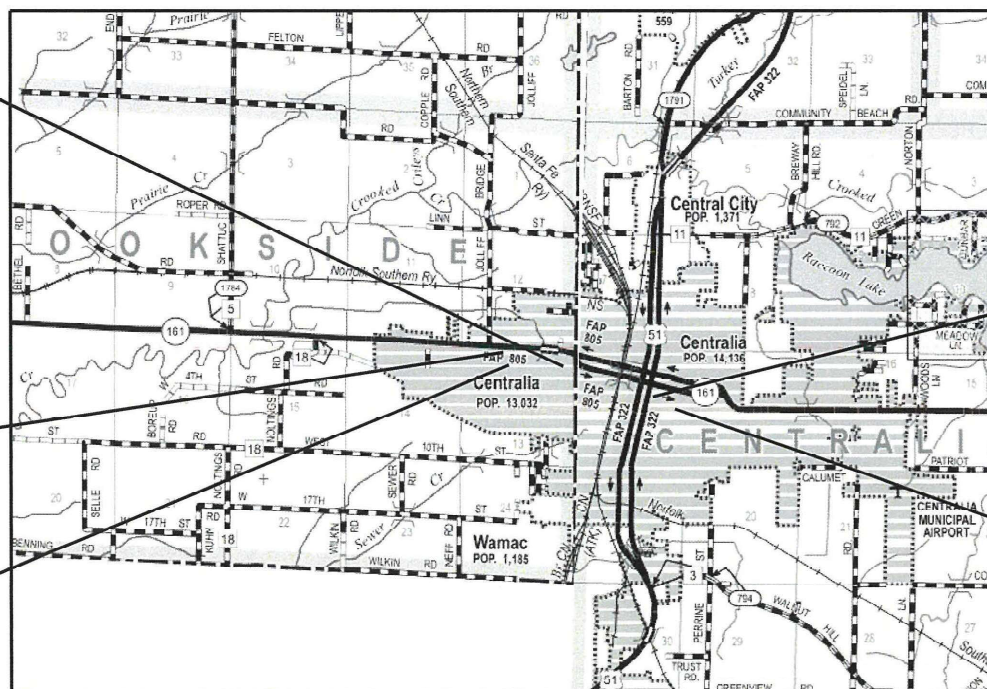


FULL SIZE PLANS HAVE BEEN PREPARED USING STANDARD ENGINEERING SCALES. REDUCED SIZED PLANS WILL NOT CONFORM TO STANDARD SCALES. IN MAKING MEASUREMENTS ON REDUCED PLANS, THE ABOVE SCALES MAY BE USED.

J.U.L.I.E.  
JOINT UTILITY LOCATION INFORMATION FOR EXCAVATION  
1-800-892-0123  
or 811

PROJECT ENGINEER CHERYL KEPLAR  
PROJECT MANAGER KAREN CHALLANDES  
CONTRACT NO. 76R41

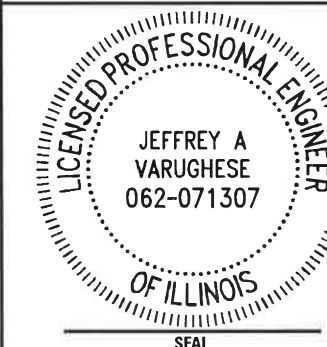
T1N R1E



LOCATION MAP  
GROSS LENGTH = 15,222' (2.88 MILES)  
NET LENGTH = 14,011' (2.65 MILES)



SIGNATURE: *[Signature]*  
DATE SIGNED: 1/17/2023  
LICENSE EXPIRATION DATE: 11 - 30 - 2023  
THIS SEAL APPLIES TO SHEETS: 1-10



SIGNATURE: *[Signature]*  
DATE SIGNED: 1/17/2023  
LICENSE EXPIRATION DATE: 11 - 30 - 2023  
THIS SEAL APPLIES TO SHEETS: 1-10

F.A.P. RTE.	SECTION	COUNTY	TOTAL SHEETS	SHEET NO.
805	(8Z,8Z-2)RS-2	MARION	14	1
		ILLINOIS	CONTRACT NO. 76R41	

D-98-057-22



LOCATION OF SECTION INDICATED THUS: - ■ -

END PROJECT  
STA. 311 + 43.49  
(NOLEMAN ST.)  
LAT: 38.527038  
LONG: -89.119234

END PROJECT  
STA. 53 + 08.79  
(MCCORD ST.)  
LAT: 38.525200  
LONG: -89.115648

STATE OF ILLINOIS  
DEPARTMENT OF TRANSPORTATION

SUBMITTED Jan. 30 20 23  
*[Signature]* REGIONAL ENGINEER  
March 24, 2023  
*[Signature]* ENGINEER OF DESIGN AND ENVIRONMENT  
March 24, 2023  
*[Signature]* DIRECTOR OF HIGHWAYS PROJECT IMPLEMENTATION

PRINTED BY THE AUTHORITY  
OF THE STATE OF ILLINOIS



REV. - MS

PLOT DATE: 1/17/2023 1:33:31 PM

## INDEX OF SHEETS

- 1 COVER SHEET
- 2 INDEX OF SHEETS, GENERAL NOTES, HIGHWAY STANDARDS, MIXTURE REQUIREMENTS & COMMITMENTS
- 3-4 SUMMARY OF QUANTITIES
- 5-7 TYPICAL SECTIONS
- 8-9 SCHEDULE OF QUANTITIES
- 10 LOCATION MAP AND DETAIL SHEET
- 11-14 ELECTRICAL SHEETS

## HIGHWAY STANDARDS

- 000001-08 STANDARD SYMBOLS, ABBREVIATIONS AND PATTERNS
- 001006 DECIMAL OF AN INCH AND OF A FOOT
- 442101-09 CLASS B PATCHES
- 701427-05 LANE CLOSURE, MULTILANE, INTERMITTENT OR MOVING OPER., FOR SPEEDS  $\leq$  40 MPH
- 701601-09 URBAN LANE CLOSURE, MULTILANE, 1W OR 2W WITH NONTRAVERSABLE MEDIAN
- 701701-10 URBAN LANE CLOSURE, MULTILANE INTERSECTION
- 701901-08 TRAFFIC CONTROL DEVICES
- 780001-05 TYPICAL PAVEMENT MARKINGS
- 781001-04 TYPICAL APPLICATIONS RAISED REFLECTIVE PAVEMENT MARKERS
- 420001-10 PAVEMENT JOINTS
- 420701-03 PAVEMENT WELDED WIRE REINFORCEMENT
- 886001-01 DETECTOR LOOP INSTALLATIONS
- 886006-01 TYPICAL LAYOUT FOR DETECTION LOOPS

## MIXTURE REQUIREMENTS

MIXTURE USE	ULTRA-THIN BWC	Partial Depth Patching
AC/PG		PG 64-22
DESIGN AIR VOIDS		4.0% @ Ndes=70
MIX COMPOSITION (Gradation)	IL 9.5 UTB	IL 19.0
FRICTION AGG	MIXTURE "D"	MIXTURE "B"
QUALITY MGMT PROGRAM		QC/QA
MatTranDev Required?		no

## TRAFFIC DATA

TRAFFIC DATA	FUNCTIONAL CLASSIFICATION	2021 ADT (ACTUAL)	2023 ADT (EST.)	2043 ADT (EST.)	SU%	MU%
<b>MCCORD ST.</b>						
BEECH ST. TO POPLAR ST.	MINOR ARTERIAL	8,300	8,400	9,700	3.9	2.1
POPLAR ST. TO ELM ST.	OTHER PRINCIPAL ARTERIAL	6,400	6,500	7,500	4.5	1.9
ELM ST. TO NOLEMAN ST.	OTHER PRINCIPAL ARTERIAL	5,300	5,400	6,200	3.3	1.5
NOLEMAN ST. TO PLEASANT AVE.	OTHER PRINCIPAL ARTERIAL	8,700	8,800	10,100	6.6	2.6
<b>NOLEMAN ST.</b>						
BEECH ST. TO POPLAR ST.	MINOR ARTERIAL	7,100	7,200	8,300	3.5	1.8
POPLAR ST. TO ELM ST.	OTHER PRINCIPAL ARTERIAL	6,500	6,600	7,600	6.9	2.7
ELM ST. TO MCCORD ST.	OTHER PRINCIPAL ARTERIAL	5,300	5,400	6,200	4.7	2.4

## GENERAL NOTES

1. MEMBERS OF JULIE KNOWN TO BE WITHIN THE LIMITS OF THE IMPROVEMENTS ARE:
  1. AMEREN ILLINOIS (GAS & ELECTRIC)
  2. AT&T ILLINOIS (COMMUNICATIONS)
  3. CITY OF CENTRALIA (WATER & SANITARY SEWER)
  4. CHARTER COMMUNICATIONS, INC. (CABLE TV)
  5. CLEARWAVE FIBER LLC (COMMUNICATIONS)
  6. WABASH COMMUNICATIONS COOPERATIVE, INC. (COMMUNICATIONS)
  7. WINDSTREAM KDL, INC. (COMMUNICATIONS)
 THE CONTRACTOR SHALL CONTACT JULIE AT LEAST 48 HOURS PRIOR TO EXCAVATION TO DETERMINE WHICH UTILITIES ARE WITHIN THE AREA.
2. THE CONTRACTOR AND THE ENGINEER SHALL BE AWARE THAT NO SURVEY WAS PERFORMED FOR THIS PROJECT. THE STATIONING, TOPOGRAPHY, AND QUANTITIES SHOWN IN THE PLANS WERE CREATED USING MICROFILM AND FIELD MEASUREMENTS. ALL SHALL BE ASSUMED TO BE APPROXIMATE. THE CONTRACTOR SHALL VERIFY DIMENSIONS AND CONDITIONS IN THE FIELD PRIOR TO CONSTRUCTION AND ORDERING OF MATERIALS.
3. ULTRA-THIN OVERLAY SHALL STOP AT THE EDGE OF PAVEMENT JOINT AND NOT ENCR OACH INTO THE GUTTER PAN.
4. NO OVERNIGHT LANE CLOSURES WILL BE PERMITTED.
5. THE PROPOSED PAVEMENT MARKINGS AND TEMPORARY PAVEMENT MARKINGS SHALL MATCH THE EXISTING PAVEMENT MARKINGS AND CONTINUE THROUGHOUT THE JOB AND TIE INTO THE EXISTING PAVEMENT MARKINGS AT THE END OF THE PROJECT.
6. TWO CHANGEABLE MESSAGE SIGNS SHALL BE PROVIDED ALONG IL 161 AND TWO ALONG US 50 TO ALERT DRIVERS OF THE ROAD CONSTRUCTION. CHANGEABLE MESSAGE SIGNS SHALL BE PLACED 14 DAYS PRIOR TO BEGINNING ANY WORK. EXACT LOCATIONS OF THE CHANGEABLE MESSAGE SIGNS SHALL BE DETERMINED BY THE ENGINEER.
7. THE RAISED REFLECTIVE PAVEMENT MARKERS SHALL NOT BE PLACED IN THE SAME LOCATION AS THEY WERE PREVIOUSLY INSTALLED.
8. THE VOID IN THE PAVEMENT WHICH RESULTS FROM THE RAISED REFLECTIVE PAVEMENT MARKER REMOVAL SHALL BE REPAIRED IN ACCORDANCE WITH ATRICLE 406.05(a). PAYMENT FOR THIS WORK SHALL BE INCLUDED AS PART OF THE RAISED REFLECTIVE PAVEMENT MARKER REMOVAL PAY ITEM.

## COMMITMENTS

NO COMMITMENTS

REV. - MS

MODEL: MODELNAME\$  
FILE NUMBER: 71224

USER NAME = USER	DESIGNED - ECW	REVISED -
	DRAWN - ECW	REVISED -
PLOT SCALE = 40.0000' / in.	CHECKED - JV	REVISED -
PLOT DATE = 1/17/2023	DATE - 12-01-2022	REVISED -

**STATE OF ILLINOIS  
DEPARTMENT OF TRANSPORTATION**

**INDEX OF SHEETS, GENERAL NOTES, HIGHWAY STANDARDS,  
MIXTURE REQUIREMENTS, COMMITMENTS & TRAFFIC DATA**

SCALE: SHEET 1 OF 1 SHEETS STA. TO STA.

F.A.P. RTE.	SECTION	COUNTY	TOTAL SHEETS	SHEET NO.
805	(8Z,8Z-2)RS-2	MARION	14	2
CONTRACT NO. 76R41				
ILLINOIS FED. AID PROJECT				

CODE NO.	ITEM	UNIT	TOTAL QUANTITY	CONSTRUCTION CODE		CODE NO.	ITEM	UNIT	TOTAL QUANTITY	CONSTRUCTION CODE	
				80% FED 20% STATE	80% FED 20% STATE					80% FED 20% STATE	80% FED 20% STATE
				0005 URBAN	0005 URBAN					0005 URBAN	0005 URBAN
40600250	RAPID SETTING POLYMER MODIFIED EMULSION	POUND	70739	23467	47272	70102630	TRAFFIC CONTROL AND PROTECTION, STANDARD 701601	L SUM	1	0.33	0.67
44000152	HOT MIX ASPHALT SURFACE REMOVAL, 3/4"	SQ YD	27292	12666	14626	70102635	TRAFFIC CONTROL AND PROTECTION, STANDARD 701701	L SUM	1	0.33	0.67
44200050	WELDED WIRE REINFORCEMENT	SQ YD	113	69	44	70103815	TRAFFIC CONTROL SURVEILLANCE	CAL DA	80	40	40
44200970	CLASS B PATCHES, TYPE II, 10 NCH	SQ YD	32	32	0	70107025	CHANGEABLE MESSAGE SIGN	CAL DA	80	40	40
44200974	CLASS B PATCHES, TYPE III, 10 NCH	SQ YD	17	0	17	70300100	SHORT TERM PAVEMENT MARKING	FOOT	2400	848	1552
44200976	CLASS B PATCHES, TYPE IV, 10 NCH	SQ YD	27	0	27	70300150	SHORT TERM PAVEMENT MARKING REMOVAL	SQ FT	807	287	520
44200994	CLASS B PATCHES, TYPE II, 12 NCH	SQ YD	96	56	40	78000100 *	THERMOPLASTIC PAVEMENT MARKING - LETTERS AND SYMBOLS	SQ FT	208	0	208
44200998	CLASS B PATCHES, TYPE III, 12 NCH	SQ YD	16	16	0	78000200 *	THERMOPLASTIC PAVEMENT MARKING - LINE 4"	FOOT	9550	2251	7299
44201000	CLASS B PATCHES, TYPE IV, 12 NCH	SQ YD	53	53	0	78000500 *	THERMOPLASTIC PAVEMENT MARKING - LINE 8"	FOOT	649	174	475
44201299	DOWEL BARS 1 1/2"	EACH	204	134	70	78000600 *	THERMOPLASTIC PAVEMENT MARKING - LINE 12"	FOOT	1849	534	1315
44213200	SAW CUTS	FOOT	1251	810	441	78000650 *	THERMOPLASTIC PAVEMENT MARKING - LINE 24"	FOOT	390	123	267
44213204	TE BARS 3/4"	EACH	18	11	7	78100100 *	RABED REFLECTIVE PAVEMENT MARKER	EACH	387	116	271
67000400	ENGINEER'S FIELD OFFICE, TYPE A	CAL MO	6	3	3	78300200	RABED REFLECTIVE PAVEMENT MARKER REMOVAL	EACH	387	116	271
67100100	MOBILIZATION	L SUM	1	0.33	0.67	88600600 *	DETECTOR LOOP REPLACEMENT	FOOT	2823	0	2823

\* SPECIALTY ITEM

MODEL NUMBER: 11/23  
FILE NUMBER: 11/23

USER NAME = _USER_	DESIGNED - ECW	REVISED -
	DRAWN - ECW	REVISED -
PLOT SCALE = 2.0000' / in.	CHECKED - JV	REVISED -
PLOT DATE = 1/17/2023	DATE - 12-01-2022	REVISED -

STATE OF ILLINOIS  
DEPARTMENT OF TRANSPORTATION

SUMMARY OF QUANTITIES

REV. - MS

SCALE: SHEET 1 OF 2 SHEETS STA. TO STA.

F.A.P. RTE. 805	SECTION (8Z,8Z-2)RS-2	COUNTY MARION	TOTAL SHEETS 14	SHEET NO. 3
CONTRACT NO. 76R41			ILLINOIS FED. AID PROJECT	

CODE NO.	ITEM	UNIT	TOTAL QUANTITY	CONSTRUCTION CODE	
				80% FED 20% STATE	80% FED 20% STATE
				0005	NHS 0005
				URBAN	URBAN
X0300031	ULTRA-THIN BONDED WEARING COURSE, 1.95" UTB, M X D"	SQ YD	56141	18624	37517
X4406040	PARTIAL DEPTH REMOVAL, TYPE I, 4"	SQ YD	14	0	14
X4406240	PARTIAL DEPTH REMOVAL, TYPE II, 4"	SQ YD	12	0	12
∅ Z0076600	TRAINEES	HOUR	500	500	
X4421000	PARTIAL DEPTH PATCHING	TON	6	0	6
∅ Z0076604	TRAINEES TRAINING PROGRAM GRADUATE	HOUR	500	500	
Z0038116	PORTLAND CEMENT CONCRETE SURFACE REMOVAL 3A"	SQ YD	28849	5958	22891

∅ 0042

REV. - MS

MODEL: MODELNAME\$  
FILE NUMBER: 311224

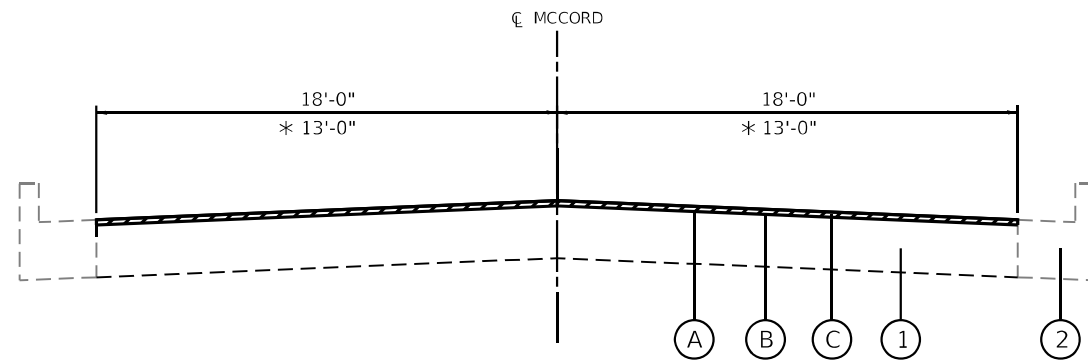
USER NAME = _USER_	DESIGNED - ECW	REVISED -
DRAWN - ECW	REVISIONS -	
PLOT SCALE = 2.0000' / in.	CHECKED - JV	REVISED -
PLOT DATE = 1/17/2023	DATE - 12-01-2022	REVISED -

**STATE OF ILLINOIS  
DEPARTMENT OF TRANSPORTATION**

**SUMMARY OF QUANTITIES**

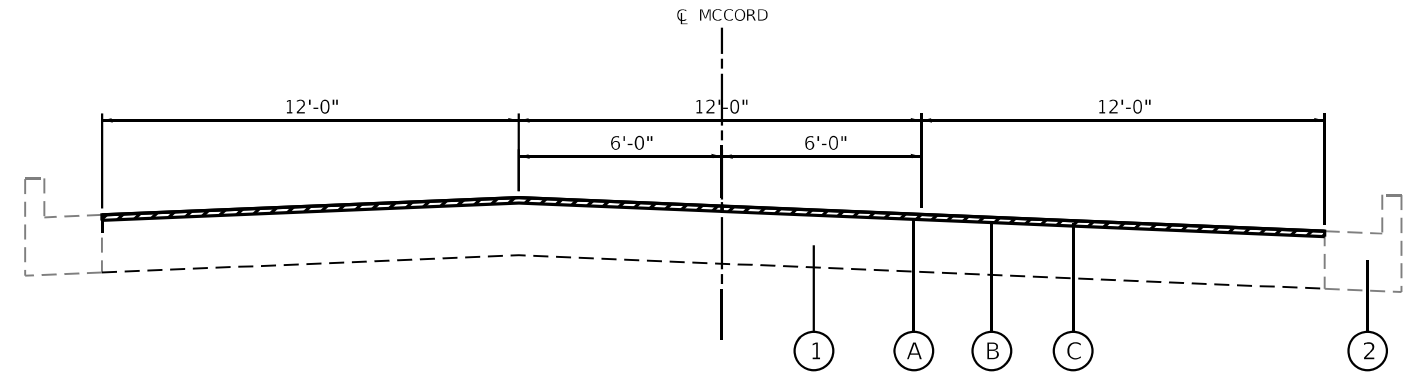
SCALE: SHEET 2 OF 2 SHEETS STA. TO STA.

F.A.P. RTE.	SECTION	COUNTY	TOTAL SHEETS	SHEET NO.
805	(8Z,8Z-2)RS-2	MARION	14	4
CONTRACT NO. 76R41			ILLINOIS FED. AID PROJECT	



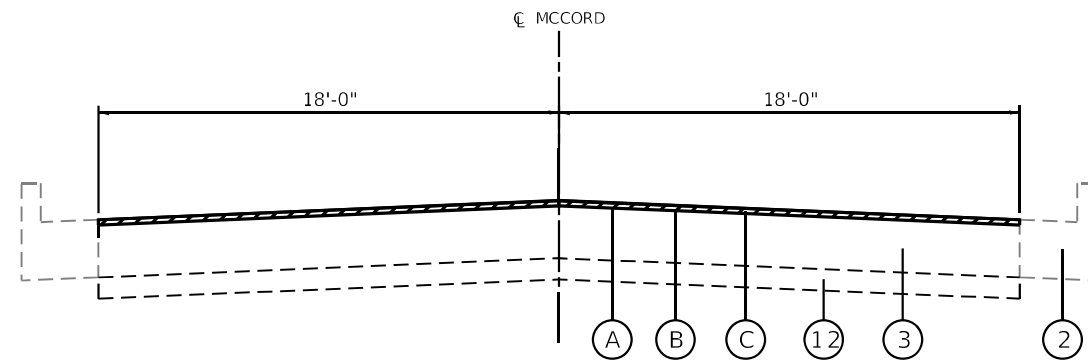
**TYPICAL SECTION**

STA. 877+49.63 TO STA. 878+48.50  
 STA. 905+48.05 TO STA. 911+52.98  
 STA. 925+08.13 TO STA. 926+13.00  
 \* STA. 928+45.00 TO STA. 934+63.15  
 \* STA. 937+88.16 TO STA. 940+31.27



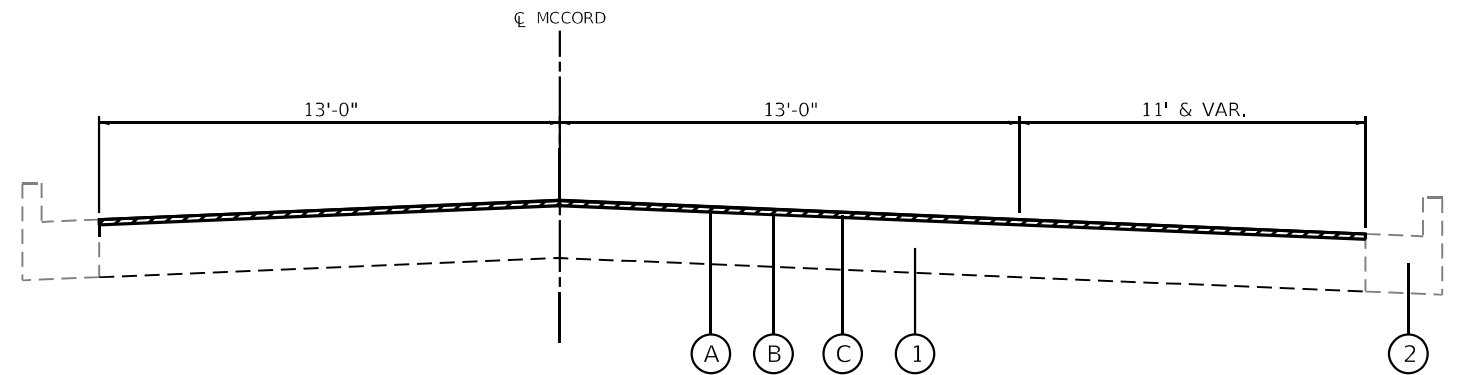
**TYPICAL SECTION**

STA. 885+70.00 TO STA. 888+93.18  
 BRIDGE OMISSION STA 888+93.18 TO STA. 901+04.42  
 STA. 901+04.42 TO STA. 903+20.00



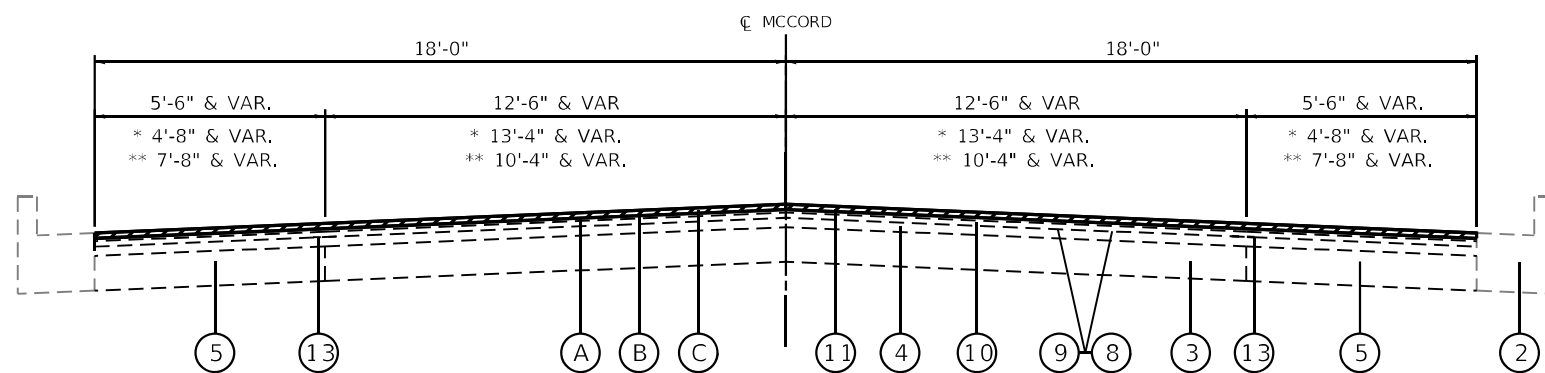
**TYPICAL SECTION**

STA. 878+48.50 TO STA. 884+15.00



**TYPICAL SECTION**

STA. 926+13.00 TO STA. 928+45.00

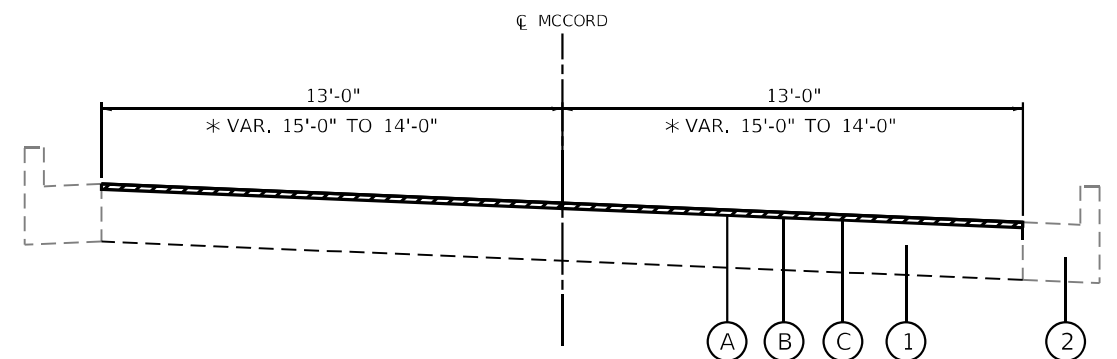


**TYPICAL SECTION**

STA. 884+15.00 TO STA. 885+70.00  
 \* STA. 903+20.00 TO STA. 905+48.05  
 \*\* STA. 911+52.98 TO STA. 925+08.13

**STATION EQUATION**

STA. 948+03.17 BK = 18' LT STA. 311+55.71 AH  
 STA. 320+96.11 BK = STA. 51+30.82 AH  
 STA. 91+55.00 BK = STA. 291+53.72 AH  
 STA. 311+43.49 BK = 18' RT STA. 311+55.71 AH



**TYPICAL SECTION**

STA. 940+31.27 TO STA. 944+77.55  
 \* STA. 307+98.00 TO STA. 312+25.19  
 (INCLUDES S.E. TRANSITIONS)

THIS LEGEND ONLY APPLIES TO THIS PAGE

- |  |  |   |  |
|--|--|---|--|
| ① EXISTING PORTLAND CEMENT CONCRETE PAVEMENT, 10"            | ⑤ EXISTING PCC WIDENING, 8"                  | ⑪ EXISTING SURFACE COURSE, 1 1/2"         | Ⓐ PROPOSED PAVEMENT SURFACE REMOVAL, 3/4"          |
| ② EXISTING COMBINATION CONCRETE CURB AND GUTTER, TYPE B-6.24 | ⑧ EXISTING BITUMINOUS MATERIALS (PRIME COAT) | ⑫ EXISTING STABILIZED SUBBASE, 4"         | Ⓑ PROPOSED RAPID SETTING POLYMER MODIFIED EMULSION |
| ③ EXISTING PAVEMENT  | ⑨ EXISTING AGGREGATE (PRIME COAT)            | ⑬ EXISTING STRIP REFLECTIVE CRACK CONTROL | Ⓒ PROPOSED ULTRA-THIN BONDED WEARING COURSE, 3/4"  |
| ④ EXISTING HMA RESURFACING, 4"                               | ⑩ EXISTING LEVELING BINDER, IL 4.75, 3/4"    |   |  |

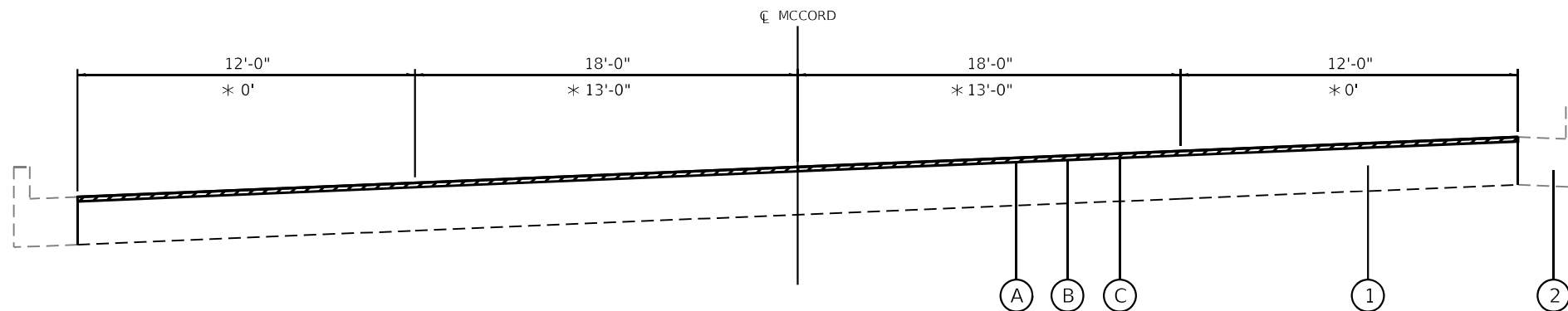
MODEL NUMBER/NAME  
 FILE NAME: 76R41

USER NAME = _USER_	DESIGNED - ECW	REVISED -
DRAWN - ECW	REVISIONS -	
PLOT SCALE = 5,000' / in.	CHECKED - JV	REVISED -
PLOT DATE = 1/17/2023	DATE - 12-01-2022	REVISED -

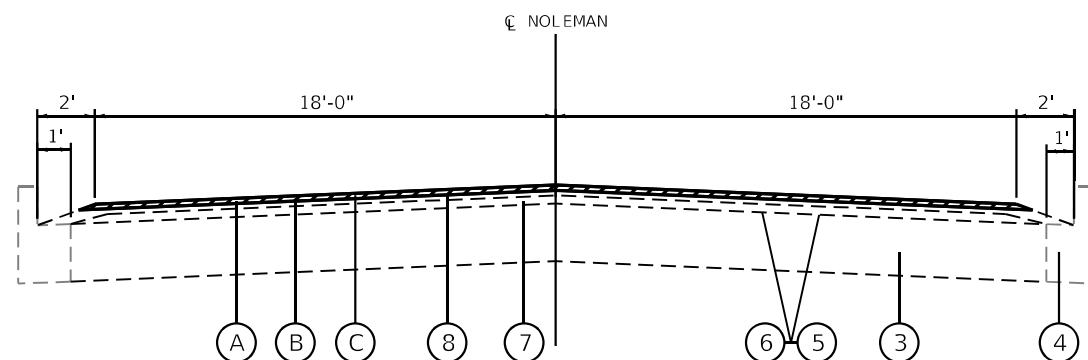
**STATE OF ILLINOIS  
 DEPARTMENT OF TRANSPORTATION**

<b>TYPICAL SECTIONS</b>	
SCALE:	SHEET 1 OF 3 SHEETS STA. TO STA.

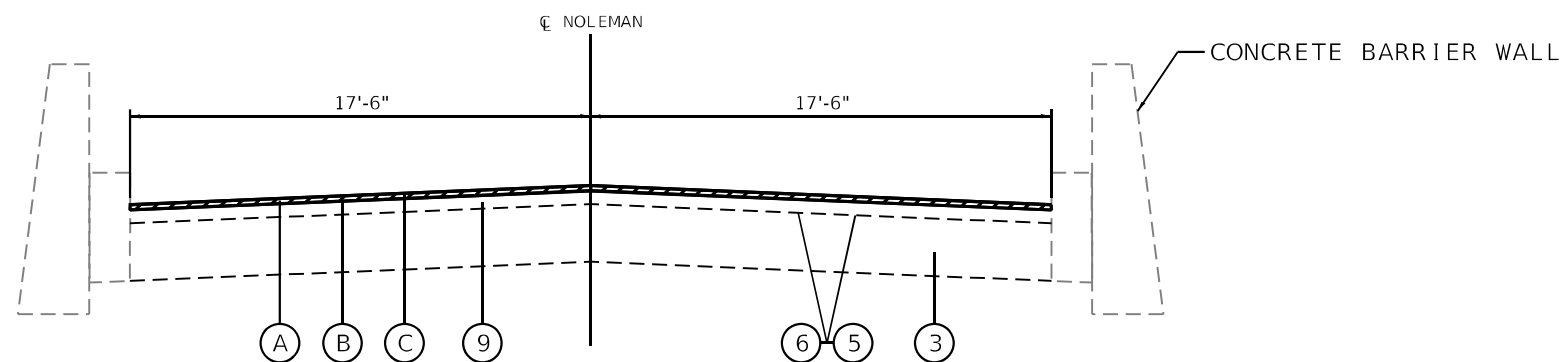
F.A.P. RTE.	SECTION	COUNTY	TOTAL SHEETS	SHEET NO.
805	(8Z,8Z-2)RS-2	MARION	14	5
CONTRACT NO. 76R41			ILLINOIS FED. AID PROJECT	



**TYPICAL SECTION**  
 STA. 312+48.77 TO STA. 53+07.79  
 \* STA. 934+63.15 TO STA. 937+88.16  
 (INLCUDES S.E. TRANSITIONS)



**TYPICAL SECTION**  
 STA. 43+19.08 TO STA. 55+92.88  
 STA. 76+57.46 TO STA. 91+48.08



**TYPICAL SECTION**  
 STA. 55+92.88 TO STA. 66+08.08

STATION EQUATION

STA. 948+03.17 BK = 18' LT STA. 311+55.71 AH  
 STA. 320+96.11 BK = STA. 51+30.82 AH  
 STA. 91+55.00 BK = STA. 291+53.72 AH  
 STA. 311+43.49 BK = 18' RT STA. 311+55.71 AH

THIS LEGEND ONLY APPLIES TO THIS PAGE

- |  |  |  |
|--|--|--|
| ① EXISTING PORTLAND CEMENT CONCRETE PAVEMENT, 10"            | ⑤ EXISTING BITUMINOUS MATERIALS (PRIME COAT) | ⑨ EXISTING SURFACE COURSE, 2"                      |
| ② EXISTING COMBINATION CONCRETE CURB AND GUTTER, TYPE B-6.24 | ⑥ EXISTING AGGREGATE (PRIME COAT)            | Ⓐ PROPOSED PAVEMENT SURFACE REMOVAL, 3/4"          |
| ③ EXISTING PAVEMENT  | ⑦ EXISTING LEVELING BINDER, IL 4.75, 3/4"    | Ⓑ PROPOSED RAPID SETTING POLYMER MODIFIED EMULSION |
| ④ EXISTING COMBINATION CONCRETE CURB AND GUTTER              | ⑧ EXISTING SURFACE COURSE, 1 1/2"            | Ⓒ PROPOSED ULTRA-THIN BONDED WEARING COURSE, 3/4"  |

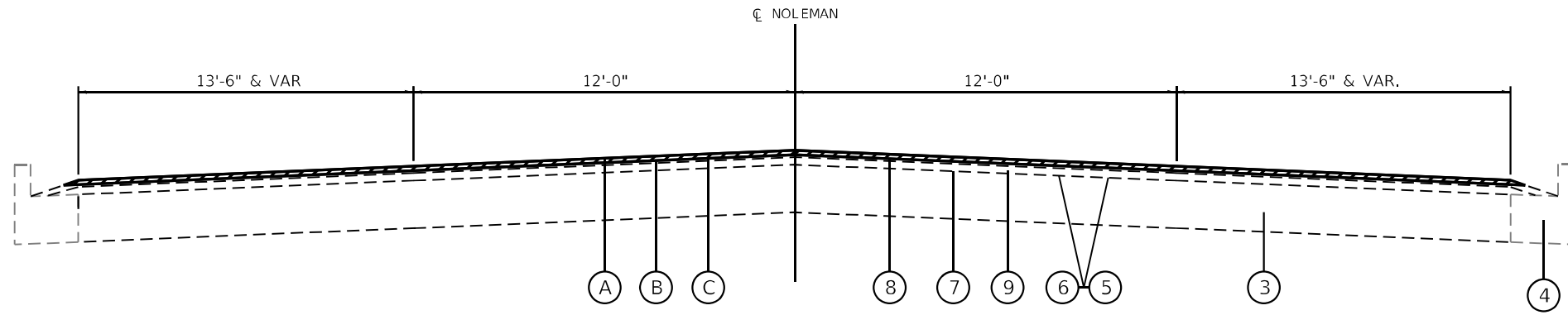
MODEL: 140816M1M1M5  
 FILE NAME: 211223

USER NAME = _USER_	DESIGNED - ECW	REVISED -
	DRAWN - ECW	REVISED -
PLOT SCALE = 5,0000' / in.	CHECKED - JV	REVISED -
PLOT DATE = 1/17/2023	DATE - 12-01-2022	REVISED -

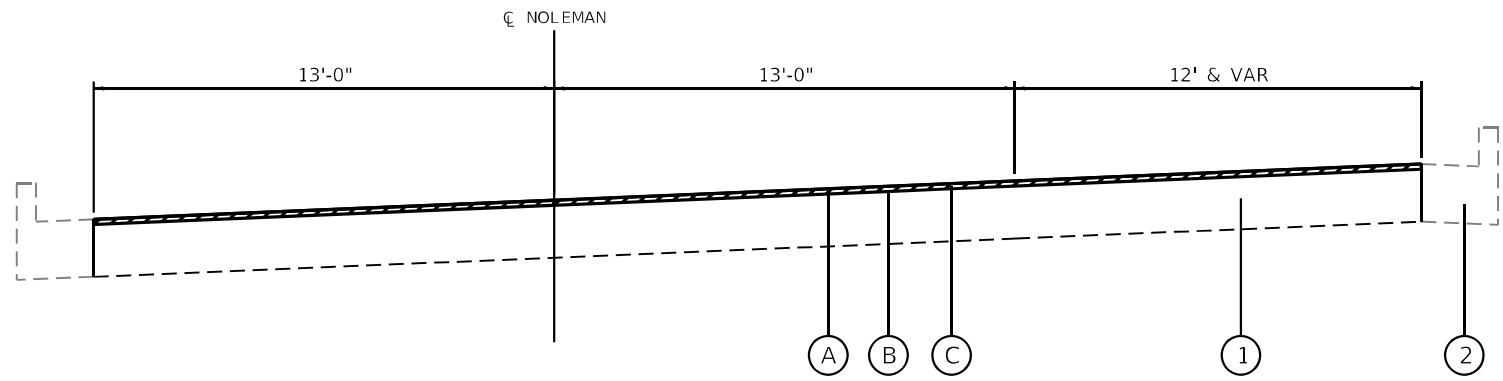
**STATE OF ILLINOIS  
 DEPARTMENT OF TRANSPORTATION**

<b>TYPICAL SECTIONS</b>			
SCALE:	SHEET 2	OF 3 SHEETS	STA. TO STA.

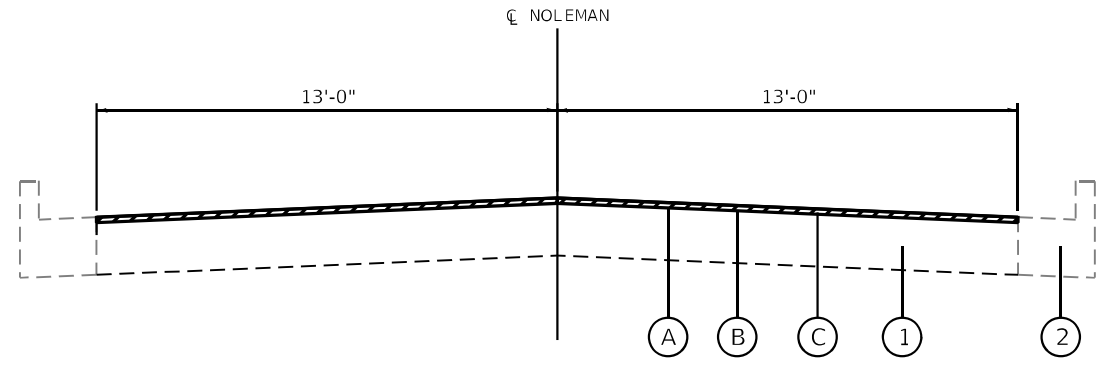
F.A.P. RTE.	SECTION	COUNTY	TOTAL SHEETS	SHEET NO.
805	(8Z,8Z-2)RS-2	MARION	14	6
CONTRACT NO. 76R41				
ILLINOIS FED. AID PROJECT				



**TYPICAL SECTION**  
STA. 66+08.08 TO STA. 76+57.46



**TYPICAL SECTION**  
STA. 291+48.08 TO STA. 298+17.16  
(INLCUDES S.E. TRANSITIONS)



**TYPICAL SECTION**  
STA. 298+17.16 TO STA. 307+98.00

**STATION EQUATION**

STA. 948+03.17 BK = 18' LT STA. 311+55.71 AH  
 STA. 320+96.11 BK = STA. 51+30.82 AH  
 STA. 91+55.00 BK = STA. 291+53.72 AH  
 STA. 311+43.49 BK = 18' RT STA. 311+55.71 AH

THIS LEGEND ONLY APPLIES TO THIS PAGE

- |  |  |  |
|--|--|--|
| ① EXISTING PORTLAND CEMENT CONCRETE PAVEMENT, 10"            | ⑤ EXISTING BITUMINOUS MATERIALS (PRIME COAT) | ⑨ EXISTING HMA RESURFACING, 2"                     |
| ② EXISTING COMBINATION CONCRETE CURB AND GUTTER, TYPE B-6.24 | ⑥ EXISTING AGGREGATE (PRIME COAT)            | Ⓐ PROPOSED PAVEMENT SURFACE REMOVAL, 3/4"          |
| ③ EXISTING PAVEMENT  | ⑦ EXISTING LEVELING BINDER, IL 4.75, 3/4"    | Ⓑ PROPOSED RAPID SETTING POLYMER MODIFIED EMULSION |
| ④ EXISTING COMBINATION CONCRETE CURB AND GUTTER              | ⑧ EXISTING SURFACE COURSE, 1 1/2"            | Ⓒ PROPOSED ULTRA-THIN BONDED WEARING COURSE, 3/4"  |

MODEL: 140821M1M15  
FILE NAME: 211223

USER NAME = _USER_	DESIGNED - ECW	REVISED -
	DRAWN - ECW	REVISED -
PLOT SCALE = 5,0000' / in.	CHECKED - JV	REVISED -
PLOT DATE = 1/17/2023	DATE - 12-01-2022	REVISED -

**STATE OF ILLINOIS  
DEPARTMENT OF TRANSPORTATION**

<b>TYPICAL SECTIONS</b>			
SCALE:	SHEET 3	OF 3 SHEETS	STA. TO STA.

F.A.P. RTE.	SECTION	COUNTY	TOTAL SHEETS	SHEET NO.
805	(8Z,8Z-2)RS-2	MARION	14	7
CONTRACT NO. 76R41				
ILLINOIS FED. AID PROJECT				

RESURFACING SCHEDULE						
STATION	LENGTH	WIDTH	HMA PAVEMENT SURFACE	PCC PAVEMENT SURFACE	RAPID SETTING POLYMER	ULTRA-THIN BONDED WEARING
			REMOVAL, 3/4"	REMOVAL, 3/4"	MODIFIED EMULSION	COURSE, IL-9.5 UTB, MIX "D", 3/4"
			SQ YD	SQ YD	POUND	SQ YD
<b>MCCORD STREET</b>						
875+26	TO	884+15		3556.0	4480.6	3556.0
884+15	TO	885+70	620.0		781.2	620.0
885+70	TO	888+93		1292.0	1627.9	1292.0
888+93	TO	901+04	BRIDGE OMISSION			
901+04	TO	903+20		862.3	1086.5	862.3
903+20	TO	905+48	912.0		1149.1	912.0
905+48	TO	906+10		248.0	312.5	248.0
906+10	TO	911+53		2172.0	2736.7	2172.0
911+53	TO	925+08	5420.0		6829.2	5420.0
925+08	TO	927+45		948.0	1194.5	948.0
927+45	TO	945+41		5188.8	6537.8	5188.8
945+41	TO	948+03	262	VAR	1100.1	1100.1
948+03.17 BK = 18' LT 311+55.71 AH			STATION EQUATION			
311+56	TO	320+96	940	60	6269.3	7899.4
320+96.11 BK = 51+30.82 AH			STATION EQUATION			
51+31	TO	53+09	178	60	1186.5	1494.9
<b>NOLEMAN STREET</b>						
43+19	TO	70+02	2683	36	10731.7	13521.9
70+02	TO	70+73	71	51	402.3	506.9
70+73	TO	76+00	527	51	2986.3	3762.8
76+00	TO	91+55	1555	36	6220.0	7837.2
91+55.00 BK = 291+53.72 AH			STATION EQUATION			
291+54	TO	293+63	209	38	884.4	1114.3
293+63	TO	311+43	1780	26	5141.7	6478.5
311+43.49 BK = 18' RT 311+55.71 AH			STATION EQUATION			
<b>TOTAL:</b>			<b>27292</b>	<b>28849</b>	<b>70738</b>	<b>56141</b>

THERMOPLASTIC PAVEMENT MARKING SCHEDULE													
LOCATION	LENGTH	LETTERS & SYMBOLS	THERMOPLASTIC PAVEMENT MARKING								SHORT TERM PAVEMENT MARKING	SHORT TERM PAVEMENT MARKING REMOVAL	
			4"		8"		12"		24"				
			SKIP-DASH WHITE	SOLID YELLOW	SKIP-DASH YELLOW	SOLID WHITE	SOLID YELLOW	SOLID WHITE	SOLID WHITE	SOLID WHITE			
STA	TO	STA	FOOT	FOOT	FOOT	FOOT	FOOT	FOOT	FOOT	FOOT	FOOT	SQ FT	
<b>MCCORD ST.</b>													
875+26	to	878+00	274		69		174					50	17
878+00	to	884+15	615		308							112	38
884+15	to	885+70	155		78							29	10
885+70	to	888+93	323		162							59	20
888+93	to	901+04	1211	BRIDGE OMISSION									
901+04	to	903+20	216		108							40	14
903+20	to	905+48	228		115							42	14
905+48	to	906+10	62		31			72				12	4
906+10	to	911+53	543		272			216	72			99	33
911+53	to	925+08	1355		678			72				247	83
925+08	to	927+45	237		61		230		72	36		44	15
927+45	to	948+03	2058		515	322						198	66
948+03.17 BK = 18' LT 311+55.71 AH			STATION EQUATION										
311+56	to	320+96	940	135.2	471	2151	357	95	35	120	36	342	114
320+96.11 BK = 51+30.82 AH			STATION EQUATION										
51+31	to	53+09	178	72.8	75	300		150		120	36	65	22
<b>NOLEMAN ST.</b>													
43+19	to	55+93	1274		637					216	36	232	78
55+93	to	66+08	1015		508							185	62
66+08	to	66+93	85		43					144	36	16	6
66+93	to	67+65	72		37							14	5
67+65	to	70+73	308		155					102	51	57	19
70+73	to	71+21	48		24					102		9	3
71+21	to	75+49	428		214					204	51	78	26
75+49	to	76+57	109		55							20	7
76+57	to	91+48	1491		746					324	36	272	91
91+55.00 BK = 291+53.72 AH			STATION EQUATION										
291+95	to	293+63	168		84							16	6
293+63	to	311+43	1780		890	81				50		162	51
311+43.49 BK = 18' RT 311+55.71 AH			STATION EQUATION										
<b>TOTAL:</b>			<b>208</b>	<b>6336</b>	<b>2857</b>	<b>357</b>	<b>649</b>	<b>85</b>	<b>1764</b>	<b>390</b>	<b>2400</b>	<b>807</b>	

RAISED REFLECTIVE PAVEMENT MARKERS					
LOCATION	LENGTH	RAISED REFLECTIVE PAVEMENT MARKER REMOVAL			
		EACH	EACH		
STA	TO	STA	FEET		
<b>MCCORD ST.</b>					
875+26.00	to	878+00.00	274	7	7
878+00.00	to	888+93.18	1093	27	27
888+93.18	to	901+04.42	1211	BRIDGE OMISSION	
901+04.42	to	906+10.00	506	13	13
906+10.00	to	925+75.00	1965	49	49
925+75.00	to	948+03.17	2228	35	35
948+03.17 BK = 18' LT 311+55.71 AH			STATION EQUATION		
311+55.71	to	320+96.11	940	85	85
320+96.11 BK = 51+30.82 AH			STATION EQUATION		
51+30.82	to	53+08.79	178	18	18
<b>NOLEMAN ST.</b>					
43+19.08	to	55+92.88	1274	32	32
55+92.88	to	66+08.08	1015	25	25
66+08.08	to	66+92.60	85	2	2
66+92.60	to	67+64.79	72	2	2
67+64.79	to	68+43.88	79	2	2
68+43.88	to	70+73.00	229	6	6
70+73.00	to	71+21.08	48	1	1
71+21.08	to	75+48.53	427	11	11
75+48.53	to	76+57.46	109	3	3
76+57.46	to	91+48.08	1491	37	37
91+55.00 BK = 291+53.72 AH			STATION EQUATION		
291+95.00	to	311+43.49	1948	32	32
311+43.49 BK = 18' RT 311+55.71 AH			STATION EQUATION		
<b>TOTAL:</b>			<b>386</b>	<b>386</b>	

MODEL NUMBER: 11/17/2023  
FILE NAME: 11/17/2023

USER NAME = _USER_	DESIGNED - ECV	REVISED -
DRAWN - ECV	REVISIONS -	
PLOT SCALE = 2,000' / in.	CHECKED - JV	REVISED -
PLOT DATE = 1/17/2023	DATE - 12-01-2022	REVISED -

**STATE OF ILLINOIS  
DEPARTMENT OF TRANSPORTATION**

**SCHEDULES OF QUANTITIES**

SCALE: SHEET 1 OF 2 SHEETS STA. TO STA.

F.A.P. RTE.	SECTION	COUNTY	TOTAL SHEETS	SHEET NO.
805	(82,82-2)RS-2	MARION	14	8
CONTRACT NO. 76R41				
ILLINOIS FED. AID PROJECT				



PARTIAL DEPTH PATCHING SCHEDULE						
STATION	LANE	LENGTH	WIDTH	AREA	PARTIAL DEPTH PATCHING, 4"	
		(FT)	(FT)	(SQ YD)	(TON)	
<b>MCCORD - EASTBOUND</b>						
STA. 312+00.00	DL	3	2	0.7	0.16	
STA. 312+50.00	DL	3	2	0.7	0.16	
STA. 314+19.00	DL	3	2	0.7	0.16	
STA. 314+82.00	BI	4	2	0.9	0.2	
STA. 315+00.00	DL	3	3	1	0.22	
STA. 319+00.00	DL	2	2	0.4	0.09	
STA. 319+19.00	TL	4	2	0.9	0.2	
STA. 52+26.00	PL	4	2	0.9	0.2	
<b>MCCORD - WESTBOUND</b>						
STA. 957+35.00	DL	3	3	1	0.22	
STA. 956+00.00	PL	3	2	0.7	0.16	
STA. 955+51.00	BI	4	2	0.9	0.2	
STA. 955+51.00	PL	4	2	0.9	0.2	
STA. 949+53.00	PL	54	2	12	2.69	
STA. 945+26.00	DL	3	2	0.7	0.16	
STA. 943+77.00	DL	3	2	0.7	0.16	
STA. 935+40.00	DL	3	3	1	0.22	
STA. 930+59.00	DL	3	2	0.7	0.16	
STA. 929+97.00	PL	4	2	0.9	0.2	
<b>TOTAL:</b>				<b>26</b>	<b>5.8</b>	

PARTIAL DEPTH REMOVAL SCHEDULE				
STATION	LANE	TYPE II, 4"		
		(SQ YD)		
<b>MCCORD - EASTBOUND</b>				
STA. 312+00.00	DL	0.7		
STA. 312+50.00	DL	0.7		
STA. 314+19.00	DL	0.7		
STA. 314+82.00	BI	0.9		
STA. 315+00.00	DL	1		
STA. 319+00.00	DL	0.4		
STA. 319+19.00	TL	0.9		
STA. 52+26.00	PL	0.9		
<b>MCCORD - WESTBOUND</b>				
STA. 957+35.00	DL	1		
STA. 956+00.00	PL	0.7		
STA. 955+51.00	BI	0.9		
STA. 955+51.00	PL	0.9		
STA. 949+53.00	PL	12		
STA. 945+26.00	DL	0.7		
STA. 943+77.00	DL	0.7		
STA. 935+40.00	DL	1		
STA. 930+59.00	DL	0.7		
STA. 929+97.00	PL	0.9		
<b>TOTAL:</b>		<b>14</b>	<b>12</b>	

CLASS B, 10", FULL DEPTH PAVEMENT PATCHING SCHEDULE										
STATION	LANE	LENGTH (FT)	WIDTH (FT)	CLASS B PATCHES, 10"			SAW CUTS (FOOT)	DOWEL BARS, 1 1/2" (EACH)	TIE BARS NO. 6 (3/4") (EACH)	WELDED WIRE (SQ YD)
				TYPE II (SQ YD)	TYPE III (SQ YD)	TYPE IV (SQ YD)				
<b>MCCORD - EASTBOUND</b>										
STA. 313+54.00	PL	13	12	17.3			75	10		17.3
<b>MCCORD - WESTBOUND</b>										
STA. 913+30.00	ML	20	12	26.7			96	10	7	26.7
STA. 887+55.00	DL	6	12	8			54	10		
STA. 887+55.00	ML	6	12	8			54	10		
STA. 887+55.00	PL	6	12	8			54	10		
STA. 868+71.00	DL	6	12	8			54	10		
<b>TOTAL:</b>				<b>32</b>	<b>17</b>	<b>27</b>	<b>387</b>	<b>60</b>	<b>7</b>	<b>44</b>

CLASS B, 12", FULL DEPTH PAVEMENT PATCHING SCHEDULE										
STATION	LANE	LENGTH (FT)	WIDTH (FT)	CLASS B PATCHES, 12"			SAW CUTS (FOOT)	DOWEL BARS, 1 1/2" (EACH)	TIE BARS NO. 6 (3/4") (EACH)	WELDED WIRE (SQ YD)
				TYPE II (SQ YD)	TYPE III (SQ YD)	TYPE IV (SQ YD)				
<b>NOLEMAN - EASTBOUND</b>										
STA. 46+68.00	DL	6	12	8			54	10		
STA. 46+68.00	ML	6	12	8			54	10		
STA. 46+68.00	PL	6	12	8			54	10		
STA. 50+17.00	DL	6	12	8			54	10		
STA. 50+17.00	ML	6	12	8			54	10		
STA. 56+20.00	DL	6	12	8			54	10		
STA. 56+20.00	PL	6	12	8			54	10		
STA. 57+58.00	DL	10	14	15.6			72	12		15.6
STA. 59+24.00	DL	34	14	52.9			144	12	11	52.9
STA. 81+46.00	DL	6	12	8			54	10		
STA. 81+46.00	ML	6	12	8			54	10		
STA. 81+46.00	PL	6	12	8			54	10		
STA. 88+10.00	DL	6	12	8			54	10		
STA. 88+10.00	PL	6	12	8			54	10		
<b>TOTAL:</b>				<b>96</b>	<b>16</b>	<b>53</b>	<b>864</b>	<b>144</b>	<b>11</b>	<b>69</b>

MODEL: NOLEMAN.MXS  
FILE: NLEMAN\_211225

USER NAME = _USER_	DESIGNED - ECW	REVISED -
	DRAWN - ECW	REVISED -
PLOT SCALE = 2,0000' / in.	CHECKED - JV	REVISED -
PLOT DATE = 1/17/2023	DATE - 12-01-2022	REVISED -

**STATE OF ILLINOIS  
DEPARTMENT OF TRANSPORTATION**

**SCHEDULES OF QUANTITIES**

SCALE: SHEET 2 OF 2 SHEETS STA. TO STA.

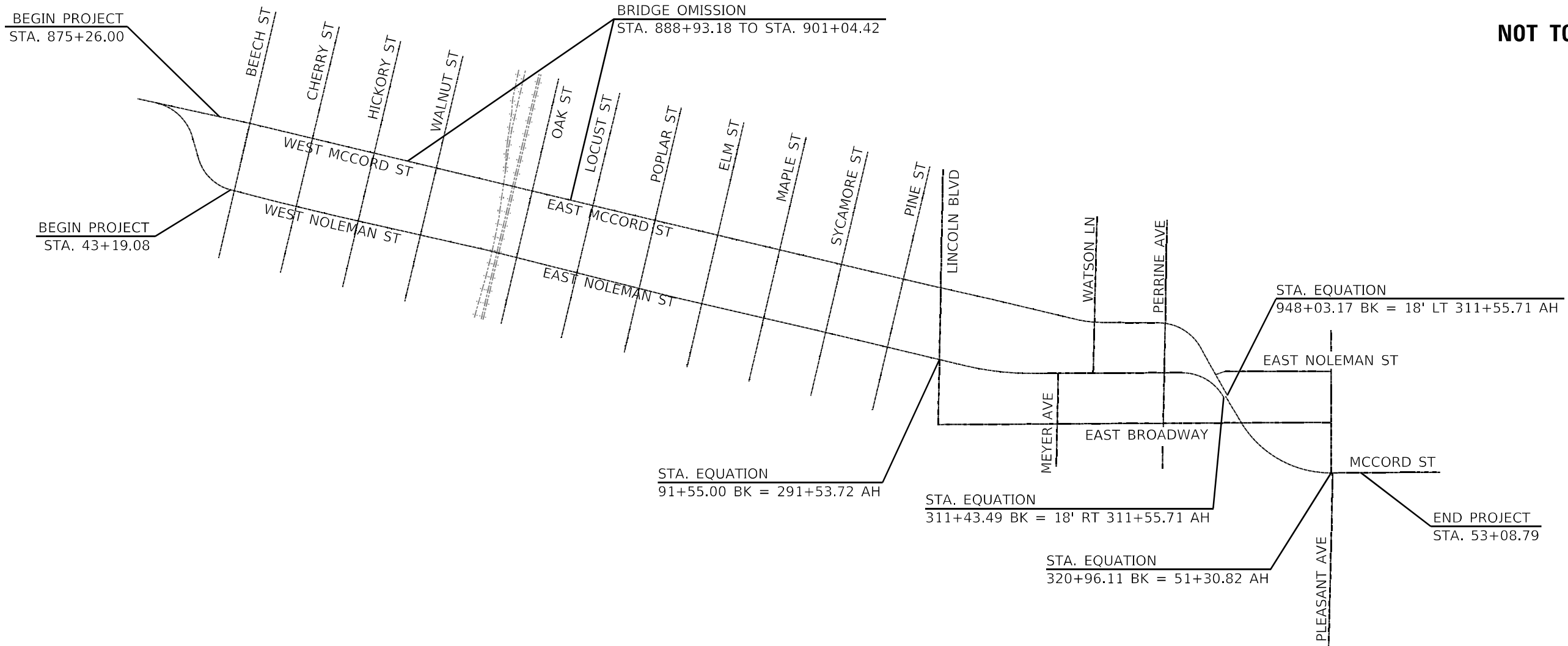
F.A.P. RTE.	SECTION	COUNTY	TOTAL SHEETS	SHEET NO.
805	(8Z,8Z-2)RS-2	MARION	14	9
CONTRACT NO. 76R41			ILLINOIS FED. AID PROJECT	

BEGIN PROJECT  
STA. 875+26.00

BEGIN PROJECT  
STA. 43+19.08

BRIDGE OMISSION  
STA. 888+93.18 TO STA. 901+04.42

NOT TO SCALE



STA. EQUATION  
91+55.00 BK = 291+53.72 AH

STA. EQUATION  
311+43.49 BK = 18' RT 311+55.71 AH

STA. EQUATION  
320+96.11 BK = 51+30.82 AH

STA. EQUATION  
948+03.17 BK = 18' LT 311+55.71 AH

END PROJECT  
STA. 53+08.79

MODEL: 14001614M15  
FILE NAME: 311243

USER NAME = _USER_	DESIGNED - ECW	REVISED -
	DRAWN - ECW	REVISED -
PLOT SCALE = 1000.0000 ' / in.	CHECKED - JV	REVISED -
PLOT DATE = 1/17/2023	DATE - 12-01-2022	REVISED -

STATE OF ILLINOIS  
DEPARTMENT OF TRANSPORTATION

LOCATION MAP

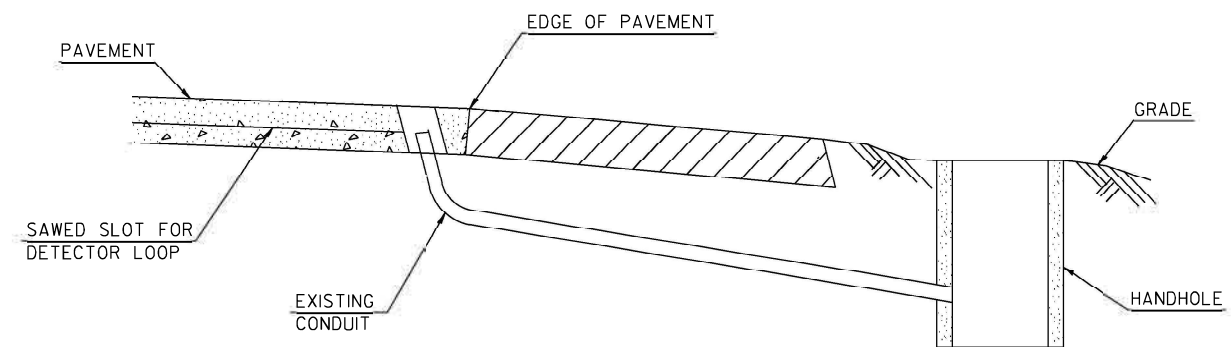
SCALE: SHEET 1 OF 1 SHEETS STA. TO STA.

F.A.P. RTE.	SECTION	COUNTY	TOTAL SHEETS	SHEET NO.
805	(8Z,8Z-2)RS-2	MARION	14	10
CONTRACT NO. 76R41			ILLINOIS FED. AID PROJECT	

SCHEDULE OF QUANTITIES			TOTAL QUANTITIES	IL 161 / E. McCORD ST. & PLEASANT AVE	IL 161 / E. McCORD ST. & LINCOLN BLVD	IL 161 / E. NOLEMAN ST. & LINCOLN BLVD
CODE NO	ITEM	UNIT				
88600600	DETECTOR LOOP REPLACEMENT	FOOT	2823	1371	684	768

**STANDARDS**

886001-01  
886006-01



**DETAIL**  
(NO SCALE)

**RE-USE EXISTING DETECTOR LOOP LEAD-IN CONDUIT**

- 1 DRILL OUT PAVEMENT SEALANT AND CLEAN EXISTING CONDUIT.
- 2 REMOVE EXISTING CABLE TO HANDHOLE.
- 3 INSTALL LOOP LEAD-IN CONDUCTORS IN CONDUIT.
- 4 SPLICE NEW DETECTOR LOOP LEAD-IN CONDUCTORS TO EXISTING LEAD-IN CABLE IN HANDHOLE.
- 5 FILL HOLE WITH APPROVED SEALER. PREVENT SEALER FROM ENTERING INTO CONDUIT.

NOT A PAY ITEM. THE COST OF THIS WORK SHALL BE INCLUDED IN THE PAY ITEM "DETECTOR LOOP REPLACEMENT"

MODEL: detector loops sheet (Sheet)  
FILE NAME: P:\1162\paradeis\1.com\1162\DOT\Documents\DOT Office\District 8\8RD Projects\0876841\CADD\Drawings\0876841-ah-gmnotes.dgn

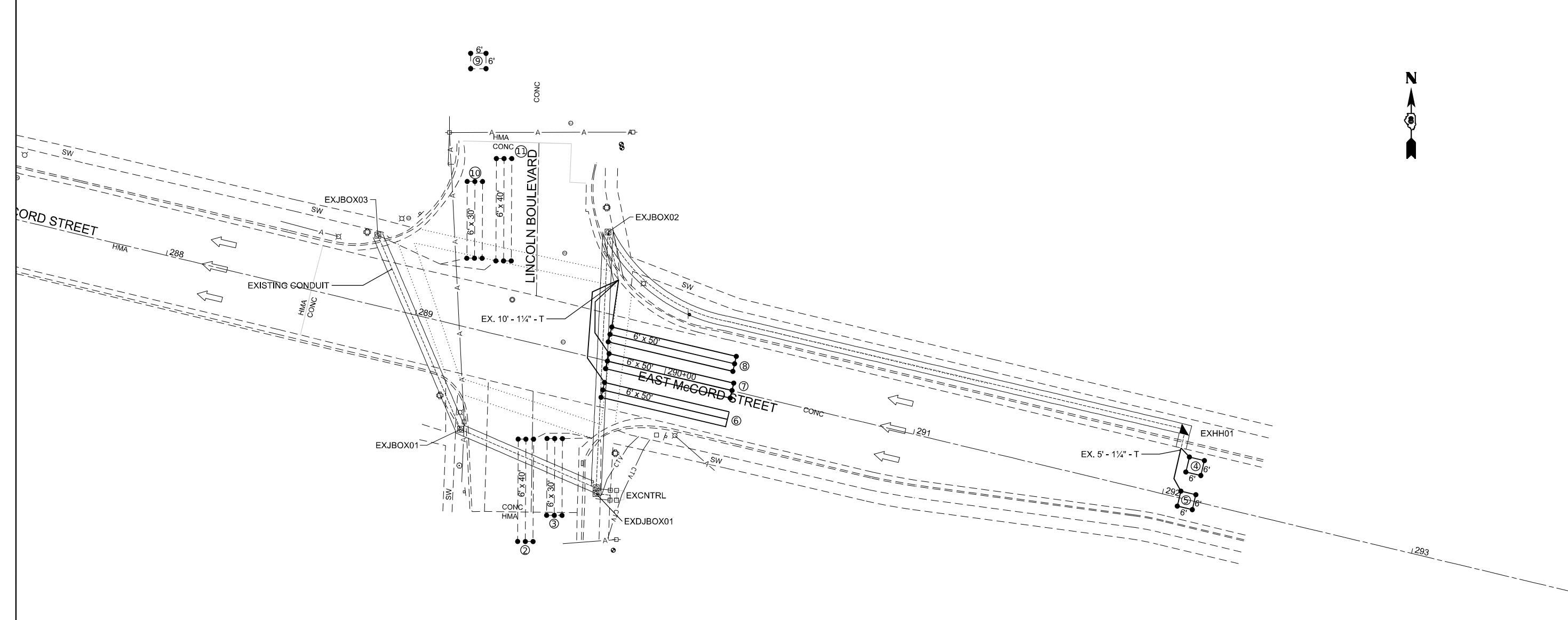
USER NAME = Karen.Challandes	DESIGNED -	REVISED -
	DRAWN -	REVISED -
PLOT SCALE = 0.16666633 1/ in.	CHECKED -	REVISED -
PLOT DATE = 1/12/2023	DATE -	REVISED -

**STATE OF ILLINOIS**  
**DEPARTMENT OF TRANSPORTATION**

**DETECTOR LOOP REPLACEMENT**  
**GENERAL NOTES, SCHEDULE OF QUANTITIES,**  
**DETAIL AND LEGEND**

SCALE: 1"=50' SHEET 1 OF 4 SHEETS STA. TO STA.

F.A.P. RTE.	SECTION	COUNTY	TOTAL SHEETS	SHEET NO.
161	(BZ.6Z-2)RS-2	MARION	14	11
ILLINOIS FED. AID PROJECT			CONTRACT NO. 76R41	



THE ABOVE VALUES ARE CALCULATED OF COMBINED LOOP AND LEAD-IN INDUCTANCE AND RESISTANCE. ACTUAL MEASURED VALUES SHOULD BE WITHIN +/- 20% OF THESE VALUES.

Q=QUADRAPOLE

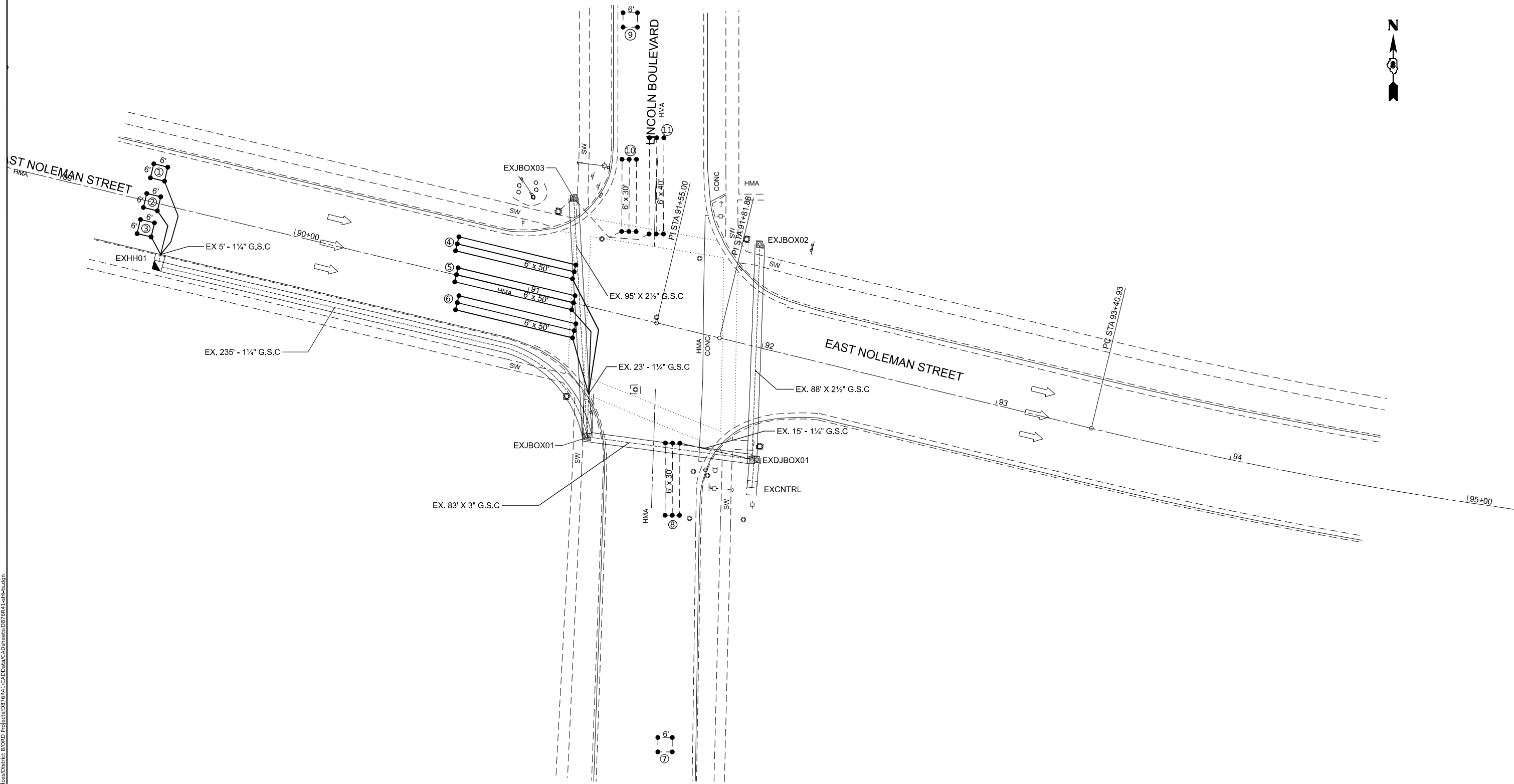
MODEL: Lincoln (Sheet)  
 FILE NAME: p:\pub\sc\det\det\com\PMID\DOT\Documents\DOT\Office\District 8\PRD Projects\0876641\CAD\Drawn\CD\Sheets\0876641-sh1.dgn

USER NAME = Karen.Challandes	DESIGNED -	REVISED -
PLOT SCALE = 0.16666633 1/ in.	DRAWN -	REVISED -
PLOT DATE = 1/12/2023	CHECKED -	REVISED -
	DATE -	REVISED -

**STATE OF ILLINOIS  
DEPARTMENT OF TRANSPORTATION**

<b>DETECTOR LOOP REPLACEMENT</b>			
SCALE: 1"=20'	SHEET 2	OF 4 SHEETS	STA. TO STA.

F.A.P. RTE.	SECTION	COUNTY	TOTAL SHEETS	SHEET NO.
805	(8Z.8Z-2)RS-2	MARION	14	12
CONTRACT NO. 76R41				
ILLINOIS FED. AID PROJECT				



THE ABOVE VALUES ARE CALCULATED OF COMBINED LOOP AND LEAD-IN INDUCTANCE AND RESISTANCE. ACTUAL MEASURED VALUES SHOULD BE WITHIN +/- 20% OF THESE VALUES.

Q=QUADRAPOLE

MODEL: Noleman Street (Sheet)  
 FILE NAME: p:\public\challandes\com\p\midot\documents\idot\office\District 8\PRD Projects\0876641\CAD\data\CAD\sheet\0876641-sheet3.dgn

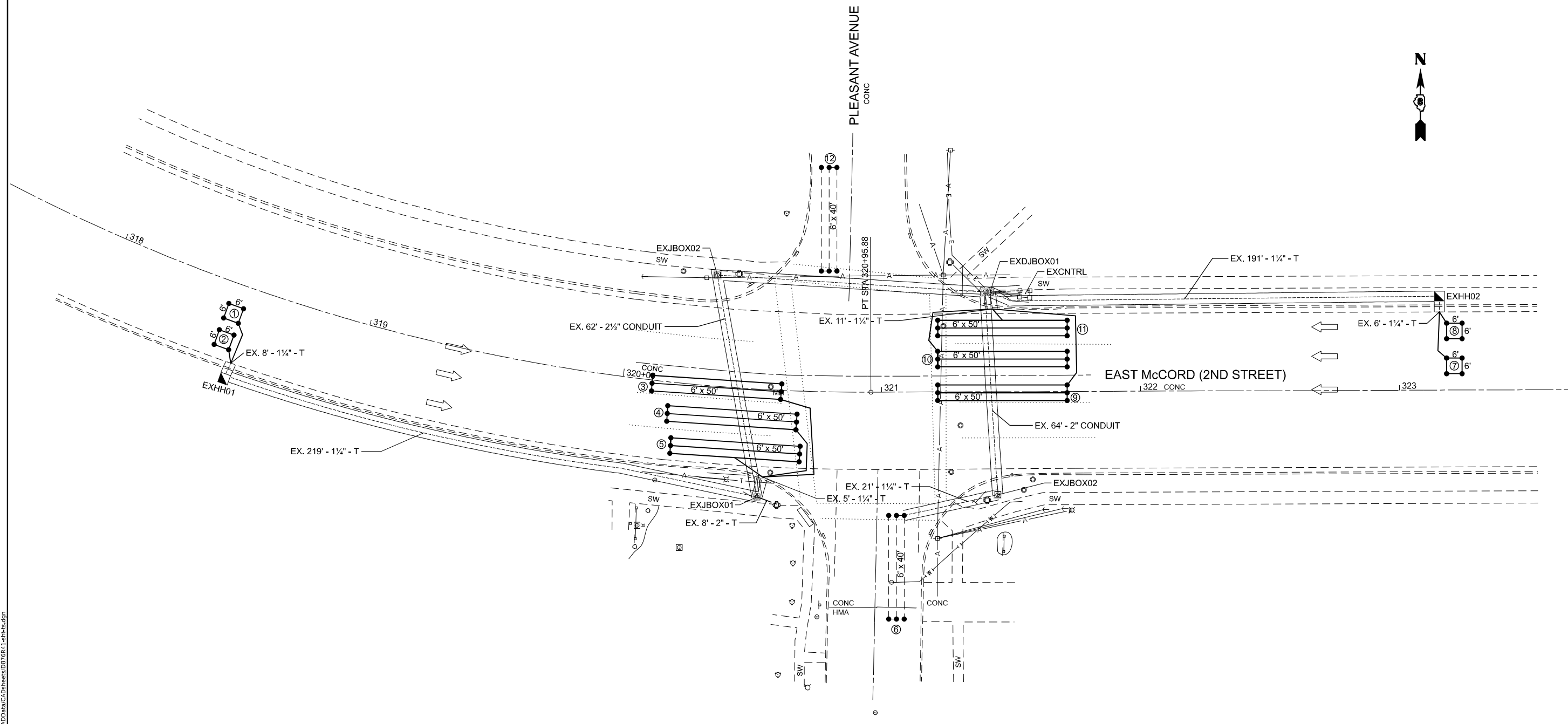
USER NAME = Karen.Challandes	DESIGNED -	REVISED -
	DRAWN -	REVISED -
PLOT SCALE = 0.16666633 1/16 in.	CHECKED -	REVISED -
PLOT DATE = 1/12/2023	DATE -	REVISED -

**STATE OF ILLINOIS**  
**DEPARTMENT OF TRANSPORTATION**

**DETECTOR LOOP REPLACEMENT**

SCALE: 1"=20'     SHEET 3 OF 4 SHEETS     STA.     TO STA.

F.A.P RTE.	SECTION	COUNTY	TOTAL SHEETS	SHEET NO.
805	(8Z.8Z-2)RS-2	MARION	14	13
CONTRACT NO. 76R41				
ILLINOIS FED. AID PROJECT				



THE ABOVE VALUES ARE CALCULATED OF COMBINED LOOP AND LEAD-IN INDUCTANCE AND RESISTANCE. ACTUAL MEASURED VALUES SHOULD BE WITHIN +/- 20% OF THESE VALUES.

Q=QUADRAPOLE

MODEL: Pleasant Ave (Sheet)  
 FILE NAME: p:\ilb\challandes\com\pwwork\Documents\IDOT\Office\District 8\PRD Projects\8876641\CAD\Draws\CAD\Draws\8876641-sh14.dgn

USER NAME = Karen.Challandes	DESIGNED -	REVISED -
	DRAWN -	REVISED -
PLOT SCALE = 0.16666633 1/ in.	CHECKED -	REVISED -
PLOT DATE = 1/12/2023	DATE -	REVISED -

**STATE OF ILLINOIS**  
**DEPARTMENT OF TRANSPORTATION**

**DETECTOR LOOP REPLACEMENT**  
 SCALE: 1"=20'    SHEET 4 OF 4 SHEETS    STA.    TO STA.

F.A.P. RTE.	SECTION	COUNTY	TOTAL SHEETS	SHEET NO.
805	(8Z.8Z-2)RS-2	MARION	14	14
CONTRACT NO. 76R41				
ILLINOIS FED. AID PROJECT				