

STATE OF ILLINOIS
DEPARTMENT OF TRANSPORTATION

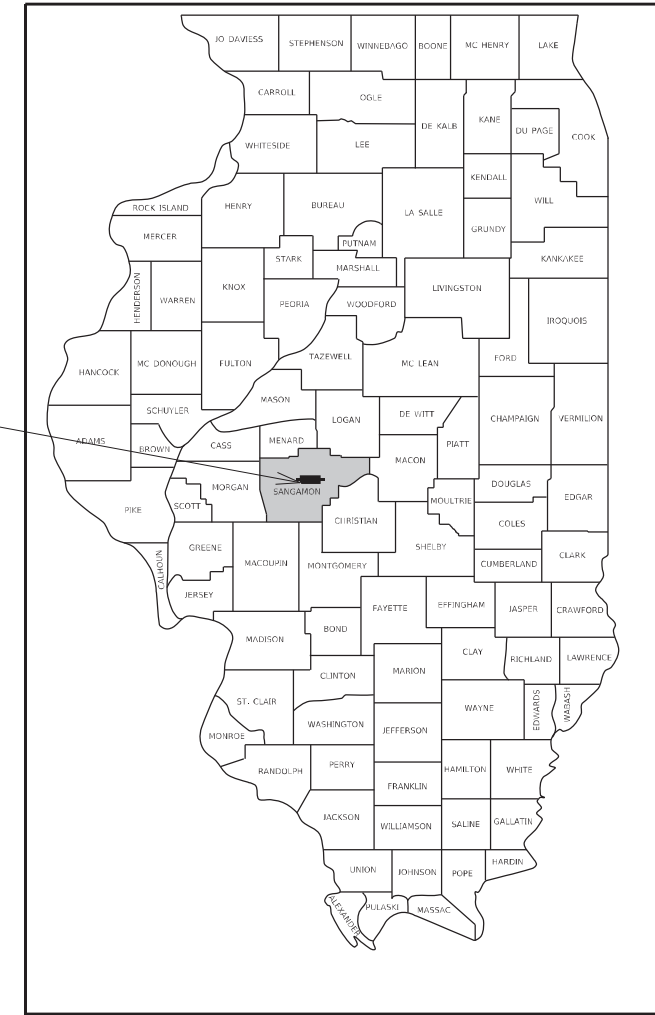
PROPOSED SITE PLANS

**FAP ROUTE 663 (D6 AND CENTRAL HDQT)
SECTION HANLEY PARKING 2023
SITE DEVELOPMENT
SANGAMON COUNTY**

F.A.P. RTE.	SECTION	COUNTY	TOTAL SHEETS	SHEET NO.
663	HANLEY PARKING 2023	SANGAMON	90*	1
			ILLINOIS CONTRACT NO. 72403	

*90 + 1 = 91 TOTAL SHEETS

D-96-081-20

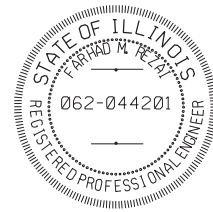


SANGAMON



INDEX OF SHEETS
SEE SHEET 2 FOR "INDEX OF SHEETS"

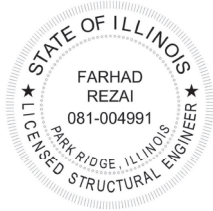
HIGHWAY STANDARDS
SEE SHEET 2 FOR "HIGHWAY STANDARDS"



[Signature]

FARHAD REZAI ILLINOIS P.E. 062.044201 **03/02/2023** DATE
EXPIRES 11/30/2023
P.E. SIGNATURE AND SEAL APPLY TO SHEETS 1 TO 62

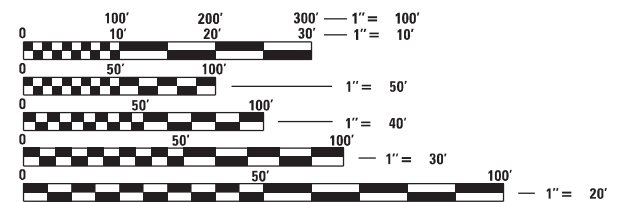
C-96-012-23



[Signature]

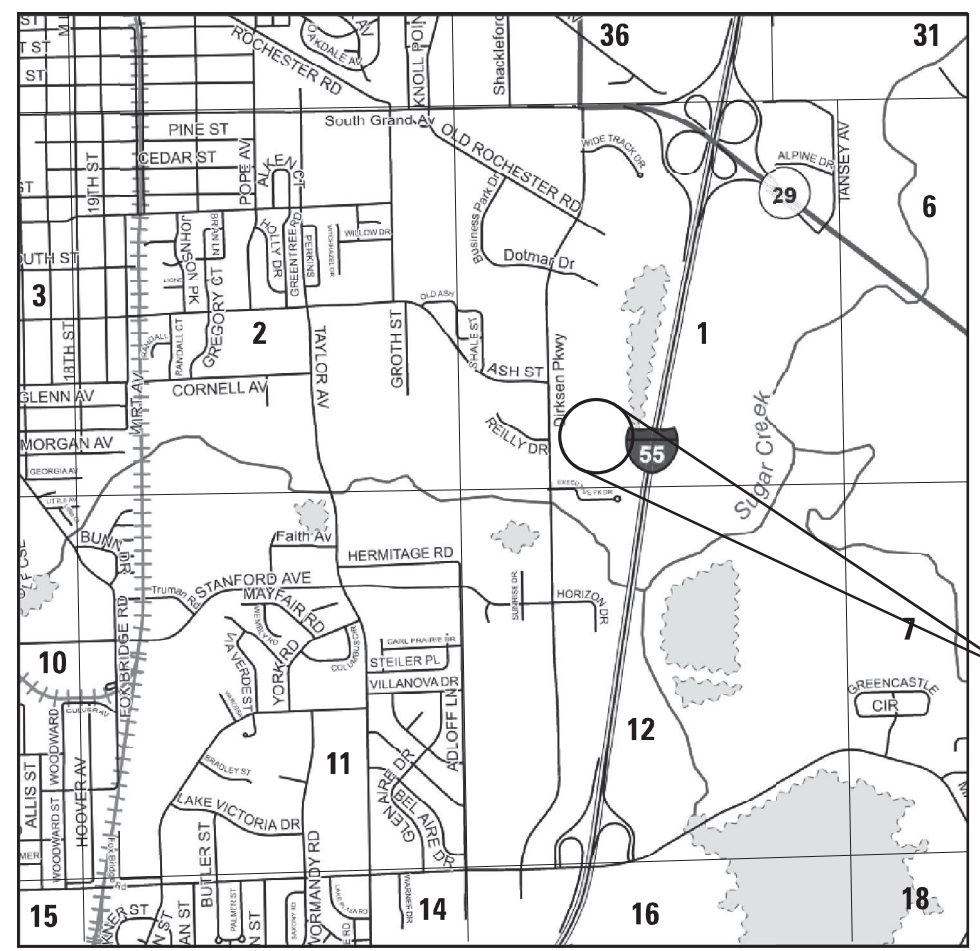
FARHAD REZAI ILLINOIS S.E. 081.004991 **03/02/2023** DATE
EXPIRES 11/30/2024
S.E. SIGNATURE AND SEAL APPLY TO SHEETS 63 TO 79

RME Rubinos & Mesia Engineers, Inc.
200 S. Michigan Avenue, Suite 1500, Chicago, IL 60604-2482



FULL SIZE PLANS HAVE BEEN PREPARED USING STANDARD ENGINEERING SCALES. REDUCED SIZED PLANS WILL NOT CONFORM TO STANDARD SCALES. IN MAKING MEASUREMENTS ON REDUCED PLANS, THE ABOVE SCALES MAY BE USED.

J.U.L.I.E.
JOINT UTILITY LOCATION INFORMATION FOR EXCAVATORS
1-800-892-0123
OR 811



PROJECT LOCATION:
2300 S. DIRKSEN PARKWAY
SPRINGFIELD, ILLINOIS
62764

LOCATION MAP

APPROXIMATE SCALE = 1" = 1,320'

PROJECT ENGINEER JAY WAVERING: 217-785-9046
PROJECT MANAGER

CONTRACT NO. 72403

STATE OF ILLINOIS
DEPARTMENT OF TRANSPORTATION
DIVISION OF HIGHWAYS

SUBMITTED March 2, 2023

[Signature] REGIONAL ENGINEER
March 24, 2023

[Signature] ENGINEER OF DESIGN AND ENVIRONMENT
March 24, 2023

[Signature] DIRECTOR OF HIGHWAYS PROJECT IMPLEMENTATION

PRINTED BY THE AUTHORITY OF THE STATE OF ILLINOIS

TRENCH BACKFILL													
PIPE NO.	FROM STRUCTURE	TO STRUCTURE	RIM ELEVATION	FROM INVERT	TO INVERT	DIAMETER (FT)	H1 (FT)	H2 (FT)	PAVMT DEPTH (FT)	AVE TRENCH DEPTH (FT)	WIDE (FT)	TRENCH LENGHT (FT)	VOLUME (CY)
DP-01	DS-01	DS-01A	581.88	573.67	573.03	1.5	7.46	8.53	0.96	7.03	4.50	66	75.2
DP-02	DS-01A	DS-02	582.31	572.93	572.34	1.5	8.63	7.75	0.96	7.23	4.50	59	69.4
DP-03	DS-02	DS-02A	580.84	572.24	571.67	2	7.60	8.22	0.96	6.95	5.00	95	116.4
DP-04	DS-02A	DS-02B	580.89	571.57	571.22	2	8.32	8.21	0.96	7.31	5.00	58	75.5
DP-05	DS-02B	DS-05	580.43	571.12	570.52	2	8.31	8.26	0.96	7.32	5.00	100	129.8
DP-06	DS-05	DS-05B	579.78	570.42	569.85	2	8.36	9.84	0.96	8.14	5.00	94	136.6
DP-07	DS-05B	DS-08	580.69	569.75	569.71	2	9.94	9.78	0.96	8.90	5.00	7	10.8
DP-08	DS-08	DS-09	580.49	569.61	569.36	2	9.88	10.19	1.13	8.91	5.00	32	50.5
DP-15	DS-13B	DS-13C	580.99	566.40	566.17	3	13.09	12.95	1.13	11.90	6.00	35	88.0
DP-21	DS-04	DS-03	583.11	578.11	577.87	1	4.50	4.74	1.13	3.50	4.00	30	15.1
DP-22	DS-03	DS-01A	583.11	577.77	577.19	1	4.84	4.12	0.96	3.52	4.00	72	36.7
DP-23	DS-04A	DS-03A	581.81	576.81	576.57	1	4.50	4.74	1.13	3.49	4.00	30	15.1
DP-24	DS-03A	DS-02A	581.81	576.47	575.89	1	4.84	4.01	0.96	3.46	4.00	72	35.9
DP-25	DS-07	DS-06	580.40	575.40	575.16	1	4.50	4.74	1.13	3.50	4.00	30	15.1
DP-26	DS-06	DS-06A	580.40	575.06	574.88	1	4.84	3.73	1.13	3.16	4.00	23	10.4
DP-27	DS EX-01	DS-06A	579.11	571.15	570.94	1.25	7.34	8.68	1.13	6.88	4.25	57	60.4
DP-28	DS-06A	DS-05A	580.24	570.84	570.61	1.25	8.78	9.00	1.13	7.76	4.25	65	78.4
DP-29	DS-05A	DS-05B	580.24	570.51	570.48	1.25	9.10	9.29	1.13	8.07	4.25	8	10.2
DP-30	DS-08A	DS-08B	580.39	575.39	575.15	1	4.50	4.74	1.13	3.50	4.00	30	15.1
DP-31	DS-08B	DS-08	580.39	575.05	574.93	1	4.84	2.80	1.13	2.70	4.00	15	5.9
DP-33	DS-16	DS-17	581.41	576.41	576.17	1	4.50	4.73	1.13	3.49	4.00	30	15.1
DP-35	DS-18	DS-19	581.80	574.25	574.01	1.5	6.80	7.04	1.13	5.79	4.50	33	30.8
DP-37	DS-20	DS-21	581.28	573.75	573.51	1	7.03	7.27	1.13	6.03	4.00	33	29.0
DP-39	DS-23	DS-22	580.79	574.10	573.80	1	6.19	6.92	1.13	5.43	4.00	32	25.3
DP-40	DS-22	DS-14	581.22	573.70	573.08	1	7.02	5.99	1.13	5.38	4.00	50	39.1
DP-41	DS-26A	DS-26	579.57	574.50	574.38	1	4.57	4.69	1.13	3.50	4.00	12	6.1
DP-42	DS-27A	DS-27	579.57	574.50	574.38	1	4.57	4.68	1.13	3.50	4.00	12	6.0
DP-43	DS-27	DS-26	579.56	574.28	573.85	1	4.78	5.71	1.13	4.12	4.00	45	26.8
DP-47	DS-25	DS-24A	579.35	574.35	574.04	1	4.50	4.83	1.13	3.54	4.00	33	16.8
FINAL QTY													1250

EARTHWORK SCHEDULE					
1	2	3	4	5	6
LOCATION	20200100 EARTH EXCAVATION	EX PAVEMENT & CURB AND GUTTER AREAS	EARTH EXCAVATION ADJUSTED FOR SHRINKAGE (15%)	EMBANKMENT	EARTHWORK BALANCE WASTE (+) OR SHORTAGE (-)
	(CU YD)	(CU YD)	(CU YD)	(CU YD)	(CU YD)
ACCESS ROAD 1, 2 AND D-6 PARKING LOT					
CUT / FILL	10,075.8	818.1	7,869.1	3,043.2	4,825.9
STOCKPILED MAT'L FROM CONTRACT 72401	0.0	0.0	0.0	0.0	1,900.0
EXCESS FILL MAT'L'S OF HANLEY PARKING LOT	0.0	0.0	0.0	4,000.0	-4,000.0
TOTAL	10,075.8	818.1	7,869.1	7,043.2	2,725.9
FINAL QTY	10,080	820	7,870	7,045	2,730

COLUMN 1 - LOCATION FROM PLANS
 COLUMN 2 - CUT QUANTITIES
 COLUMN 3 - EX PAVEMENT & CURB AND GUTTER AREAS
 COLUMN 4 - ADJUSTED EARTH EXCAVATION QUANTITIES THAT ARE TO BE USED AS FILL MATERIAL IN EMBANKMENT
 COLUMN 5 - FILL QUANTITIES
 COLUMN 6 - MATERIAL TO WASTE OR OFF-SITE MATERIAL NEEDED

NOTE: THE SURPLUS MATERIAL GENERATED FROM THIS CONTRACT IS TO BE WASTED ON STATE OWNED PROPERTY LOCATED NORTH OF THE HANLEY CAMPUS. THE WASTE SITE CAN BE ACCESSED FROM DIRKSEN PKWY AT OLD ROCHESTER ROAD. THE EXCESS MATERIAL SHALL BE DUMPED AND SPREAD OUT TO MATCH THE ADJACENT TOPOGRAPHY AS DIRECTED BY THE ENGINEER. NO COMPACTIVE EFFORT SHALL BE REQUIRED.

81028390 UNDERGROUND CONDUIT, PVC, 4" DIA.				
ACCESS ROAD 1, 2 AND D-6 PARKING LOT				
STA	LT/RT	STA	LT/RT	FOOT
1007+82.15	LT	1007+82.15	RT	36.0
1007+93.77	LT	1007+93.77	RT	42.0
TOTAL				78.0
FINAL QTY				78

X5503110 TEMPORARY STORM SEWER PLUGS			
ACCESS ROAD 1, 2 AND D-6 PARKING LOT			
STA	OFFSET	LT/RT	EACH
1000+00.00	17.27	RT	1
TOTAL			1

X5503105 PLUG EXISTING STORM SEWER			
ACCESS ROAD 1, 2 AND D-6 PARKING LOT			
STA	OFFSET	LT/RT	CU YD
1007+52.96	60.50	LT	1.00
TOTAL			1.00
FINAL QTY			1

78001110 PAINT PAVEMENT MARKING - LINE 4"					
ACCESS ROAD 1, 2 AND D-6 PARKING LOT					
STA	STA	LT/RT	EACH	LENGTH	FOOT
500+93.64	502+73.94	LT	16	36	756.0
501+32.94	504+00.00	LT	24	18	432.0
503+13.94	504+00.00	LT	7	36	356.7
502+55.94	502+73.94	LT	2	136	272.0
502+85.94	502+94.94	LT	1	136	136.0
503+13.94	503+31.94	LT	2	136	272.0
503+22.94	503+31.94	LT	1	136	136.0
504+00.00	502+31.00	LT	10	36	489.4
504+03.95	505+29.95	LT	15	18	270.0
505+41.94	505+59.94	LT	2	18	36.0
504+93.95	505+11.95	LT	2	136	272.0
505+41.94	505+59.94	LT	1	136	136.0
TOTAL					3,564.0
FINAL QTY					3565

78001130 PAINT PAVEMENT MARKING - LINE 6"					
ACCESS ROAD 1, 2 AND D-6 PARKING LOT					
STA	STA	LT/RT	EACH	LENGTH	FOOT
503+03.34	503+13.34	LT/RT	2	103.0	206.0
1000+55.45	1000+65.45	LT/RT	2	24.0	48.0
1003+25.83	1003+73.67	RT	1	89.7	89.7
1006+70.59	1006+78.59	LT/RT	2	24.0	48.0
1006+94.85	1007+20.28	RT	1	53.0	53.0
1009+66.34	1009+83.01	RT	2	28.0	56.0
1009+66.34	1009+83.01	LT	2	28.0	56.0
TOTAL					556.7
FINAL QTY					557

78001180 PAINT PAVEMENT MARKING - LINE 24"					
ACCESS ROAD 1, 2 AND D-6 PARKING LOT					
STA	STA	LT/RT	EACH	LENGTH	FOOT
504+45.77	504+60.77	RT	1	15	15.0
505+45.72	505+47.72	RT	1	13	13.0
505+49.26	505+51.26	LT	1	12	12.0
503+03.34	503+13.34	LT/RT	25	10	250.0
1000+55.45	1000+65.45	LT/RT	7	10	70.0
1003+25.83	1003+73.67	RT	11	10	115.0
1006+70.59	1006+78.59	LT/RT	7	10	70.0
1006+94.85	1007+20.28	RT	7	10	70.0
1009+66.34	1009+83.01	RT	4	10	40.0
1009+66.34	1009+83.01	LT	4	10	40.0
TOTAL					695.0
FINAL QTY					695

81028350 UNDERGROUND CONDUIT, PVC, 2" DIA.				
ACCESS ROAD 1, 2 AND D-6 PARKING LOT				
STA	LT/RT	STA	LT/RT	FOOT
504+21.00	RT	504+73.00	RT	52
1000+06.50	LT	1000+50.61	RT	59
1001+11.75	RT	1001+59.07	LT	67
1001+89.20	LT	1002+39.64	RT	59
1003+18.75	RT	1003+80.28	RT	62
1006+89.71	RT	1007+26.10	RT	40
TOTAL				339.0
FINAL QTY				339

X0327036 BIKE PATH REMOVAL							
ACCESS ROAD 1, 2 AND D-6 PARKING LOT							
STA	OFFSET	LT/RT	STA	OFFSET	LT/RT	SQ FT	SQ YD
1007+17.57	18.44	RT	1007+36.87	35.10	RT	524.5	58.3
SHEET NO. 20						1810.61	201.2
TOTAL						259.5	
FINAL QTY						260	

Z0062456 TEMPORARY PAVEMENT						
ACCESS ROAD 1, 2 AND D-6 PARKING LOT						
STA	OFFSET	LT/RT	LENGTH	WIDTH	SQ FT	SQ YD
504+54.67	128.0	LT	43.70	23.45	1026.0	114.0
TOTAL					114.0	
FINAL QTY					114	

X5010050 REINFORCED CONCRETE DUCK BANK REMOVAL			
ACCESS ROAD 1, 2 AND D-6 PARKING LOT			
STA	STA	LT/RT	FOOT
503+00.98	504+00.00	RT	155.77
504+00.00	504+26.78	LT/RT	163.58
TOTAL			319.35
FINAL QTY			320

Z0002750 BARRICADES, TYPE III			
ACCESS ROAD 1, 2 AND D-6 PARKING LOT			
STA	OFFSET	LT/RT	EACH
504+46.00	28.50	RT	2
504+77.76	153.90	LT	2
1000+00.00	0.00	LT/RT	2
1007+30.80	78.40	RT	1
1009+90.25	28.60	RT	2
1009+90.25	28.60	LT	2
TOTAL			11

Z0018700 DRAINAGE STRUCTURE TO BE REMOVED			
ACCESS ROAD 1, 2 AND D-6 PARKING LOT			
STA	OFFSET	LT/RT	EACH
1007+09.45	22.15	LT	1
1007+20.66	22.01	LT	1
TOTAL			2

X6640300 CHAIN LINK FENCE REMOVAL				
ACCESS ROAD 1, 2 AND D-6 PARKING LOT				
STA	LT/RT	STA	LT/RT	FOOT
1007+26.85	LT	1007+88.63	LT	78
1008+16.02	LT	1008+52.93	LT	40
TOTAL				118

X0350810 BOLLARD REMOVAL			
ACCESS ROAD 1, 2 AND D-6 PARKING LOT			
STA	OFFSET	LT/RT	EACH
503+43.84	134.38	LT	1
503+55.85	134.38	LT	1
1007+15.85	36.80	RT	1
1007+20.54	40.62	RT	1
1007+25.05	44.62	RT	1
TOTAL			5

MODEL: D:\default... FILE NAME: C:\Users\Jay.Wavering\State of Illinois\DOT\B.C.D66\contract...



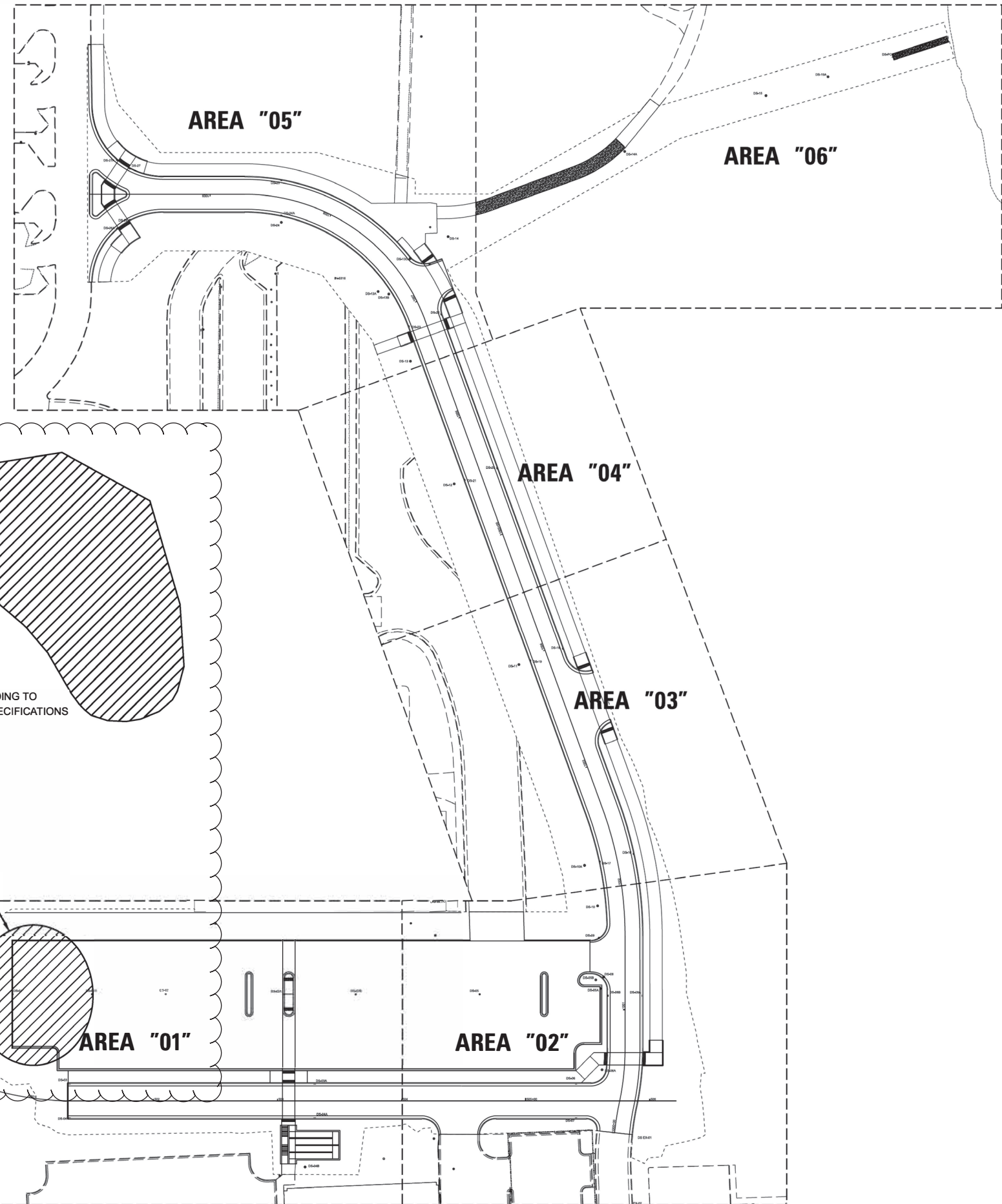
USER NAME = Jay.Wavering
 PLOT SCALE = 100.0000' / in.
 PLOT DATE = 4/17/2023

DESIGNED - AW
 DRAWN - DB
 CHECKED - PH
 DATE - 01/26/2023

REVISED -
 REVISED -
 REVISED -
 REVISED -

STATE OF ILLINOIS
 DEPARTMENT OF TRANSPORTATION

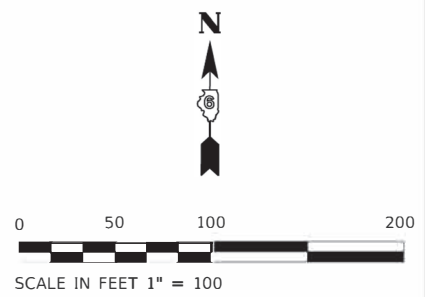
SCHEDULE OF QUANTITIES



EXCESS FILL MATERIAL
CONTRACT 72403
~ 4,000 CU YDS

NOTE: CONSTRUCT EMBANKMENT ACCORDING TO
SECTION 205 OF THE STANDARD SPECIFICATIONS
SEE SHEET 47A.

EXCESS FILL MATERIAL
CONTRACT 72401
~ 1,900 CU YDS



1 REVISD 4-18-2023

MODEL: D:\6644\ Rubinos & Mesita Engineers, Inc. 200 S. Michigan Avenue, Suite 1500, Chicago, IL 60604-2892
 FILE NAME: P:\R00093120\WC\06\Design\DWG\Civil\CADD_Sheets\Site_Key_Plan.dgn



USER NAME = DBlakaj	DESIGNED - AW	REVISED - JW - IDOT 04/17/2023
	DRAWN - DB	REVISED -
PLOT SCALE = 600,0000' / ft.	CHECKED - PH	REVISED -
PLOT DATE = 3/1/2023	DATE - 01/26/2023	REVISED -

**STATE OF ILLINOIS
DEPARTMENT OF TRANSPORTATION**

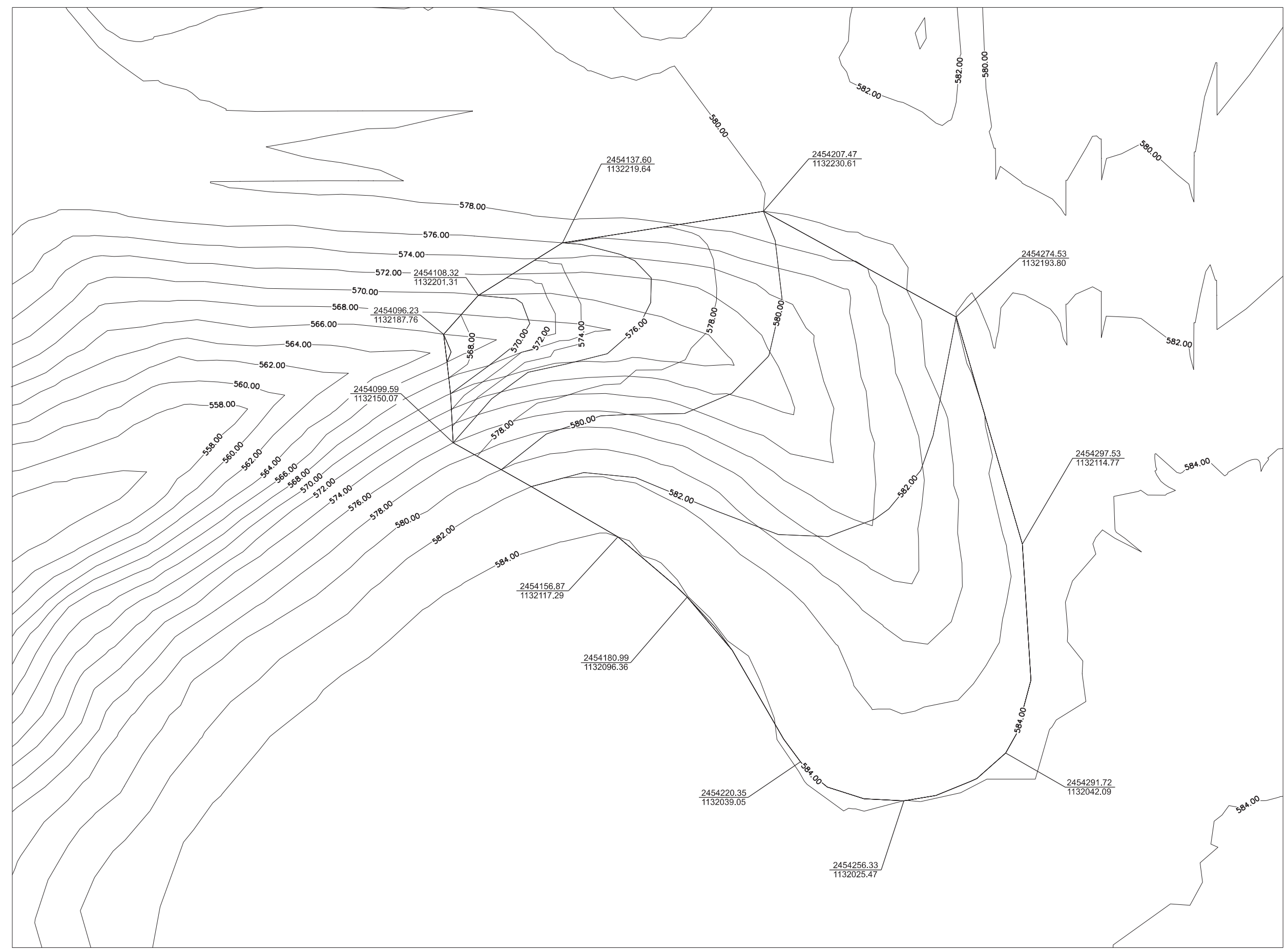
SITE KEY PLAN

SCALE: 1" = 15' SHEET OF SHEETS STA. TO STA.

F.A.P. RTE.	SECTION	COUNTY	TOTAL SHEETS	SHEET NO.
663	HANLEY PARKING 2023	SANGAMON	90	14
			CONTRACT NO. 72403	
ILLINOIS FED. AID PROJECT				



SCALE IN FEET 1" = 15'



LEGEND

	585	PROPOSED CONTOUR MAJOR
	584	PROPOSED CONTOUR MINOR

1 SHEET ADDED 4-18-2023

MODEL: \\MODELS\NAME FILES: \\NAME FILES



USER NAME = \$USERS	REVISED - JW - IDOT
PLOT SCALE = \$SCALES	DATE - 04/17/2023
PLOT DATE = \$DATES	NOTE: SHEET ADDED FOR ADDENDUM

**STATE OF ILLINOIS
DEPARTMENT OF TRANSPORTATION**

**GRADING PLAN
(EXCESS FILL MATERIAL)**

SCALE: _____ SHEET ____ OF ____ SHEETS STA. _____ TO STA. _____

F.A.P. RTE.	SECTION	COUNTY	TOTAL SHEETS	SHEET NO.
663	HANLEY PARKING 2023	SANGAMON	90	47A
			CONTRACT NO. 72403	

ILLINOIS FED. AID PROJECT