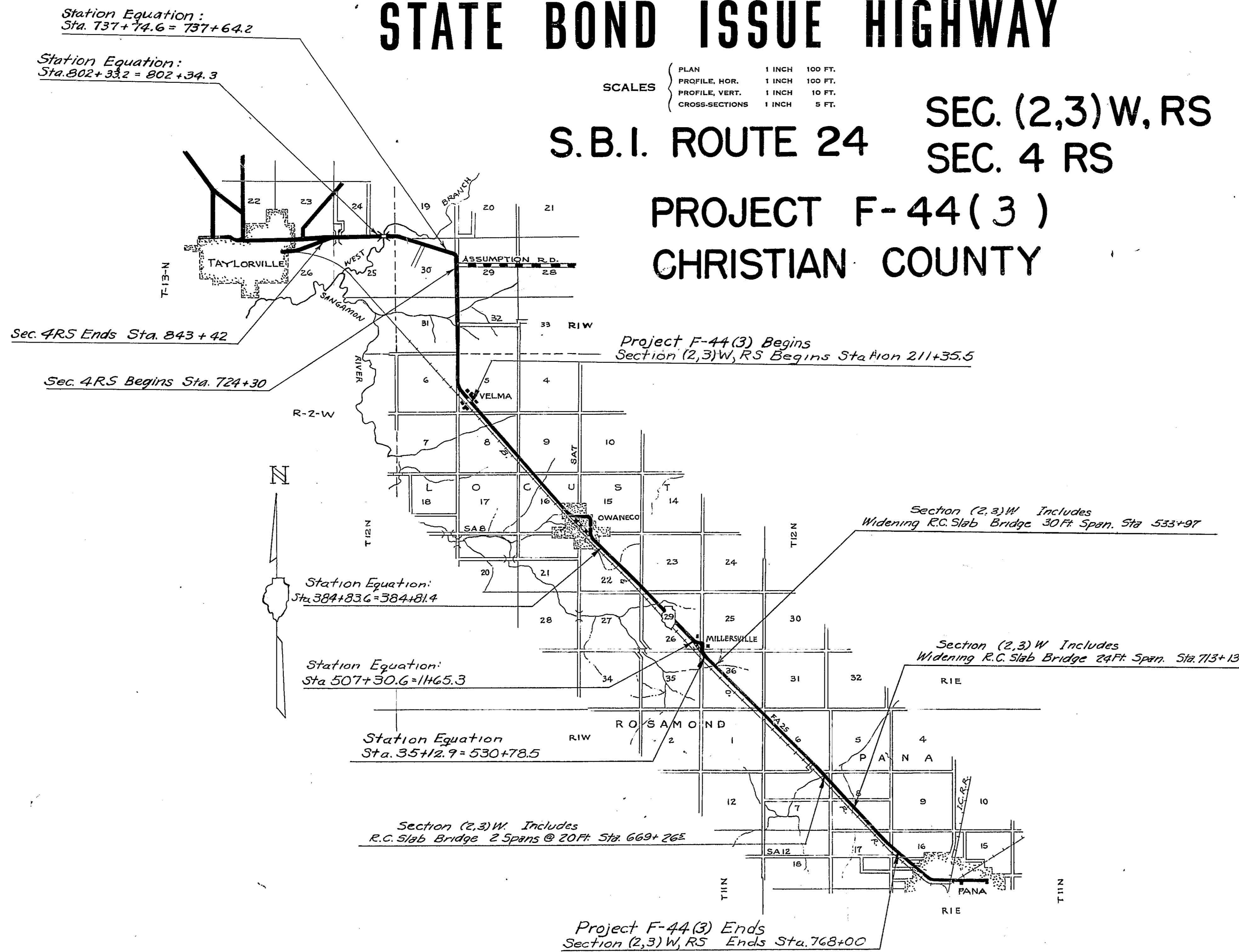


**STATE OF ILLINOIS**  
**DEPARTMENT OF PUBLIC WORKS AND BUILDINGS**  
**DIVISION OF HIGHWAYS**  
**PLANS FOR PROPOSED**  
**STATE BOND ISSUE HIGHWAY**

BOND ISSUE ROUTE NO.	SEC.	COUNTY	TOTAL SHEETS	SHEET NO.
24	(2,3) W	CHRISTIAN	13	1
24	(2,3) W	ILLINOIS PROJECT F-44(3)	21	

SCALES  
 PLAN 1 INCH = 100 FT.  
 PROFILE, HOR. 1 INCH = 100 FT.  
 PROFILE, VERT. 1 INCH = 10 FT.  
 CROSS-SECTIONS 1 INCH = 5 FT.

**S.B.I. ROUTE 24**  
**SEC. (2,3) W, RS**  
**SEC. 4 RS**  
**PROJECT F-44(3)**  
**CHRISTIAN COUNTY**



STATE OF ILLINOIS  
 DEPARTMENT OF PUBLIC WORKS AND BUILDINGS  
 DIVISION OF HIGHWAYS

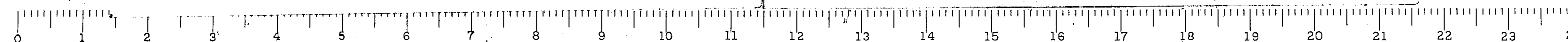
SUBMITTED: 7-26-57  
 EXAMINED: Aug 15 1957  
 PASSED: Aug 15 1957  
 APPROVED: Aug 15 1957  
 APPROVED: Aug 15 1957

DEPARTMENT OF COMMERCE  
 BUREAU OF PUBLIC ROADS

APPROVED \_\_\_\_\_  
 DIVISION ENGINEER

DATE \_\_\_\_\_

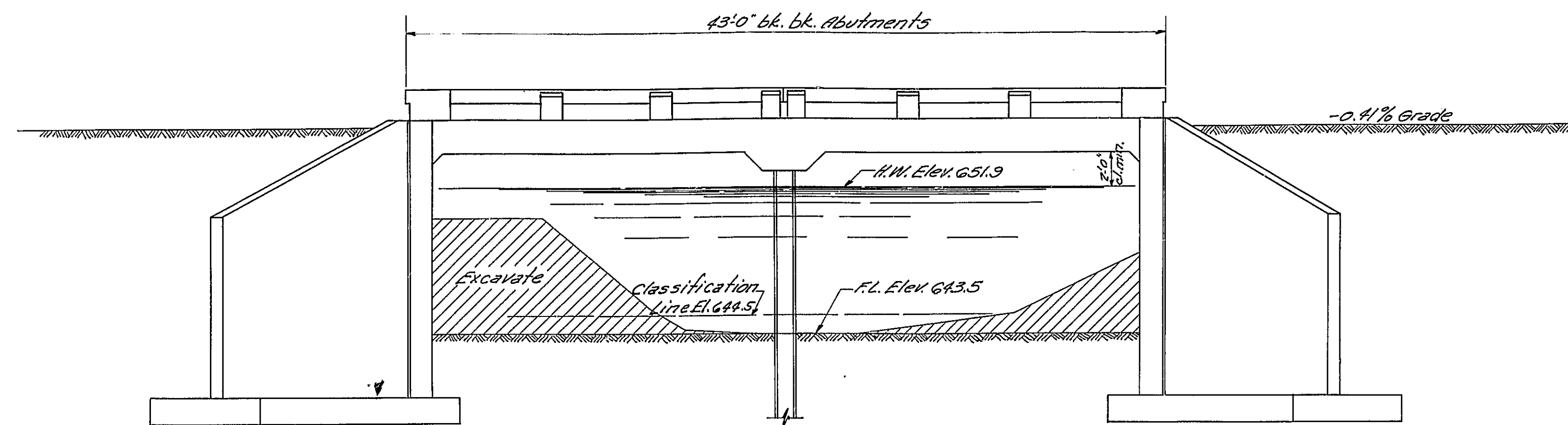
LAYOUT  
 APPROXIMATE SCALE 1" = 1 MILE  
 SEC. (2,3)W NET LENGTH 55,666.4 ft = 10.543 MILES } PROJECT F-44(3)  
 SEC. (2,3)RS NET LENGTH 55,666.4 ft = 10.543 MILES }  
 SEC. 4 RS NET LENGTH 11,921.3 ft = 2.258 MILES } STATE WORK



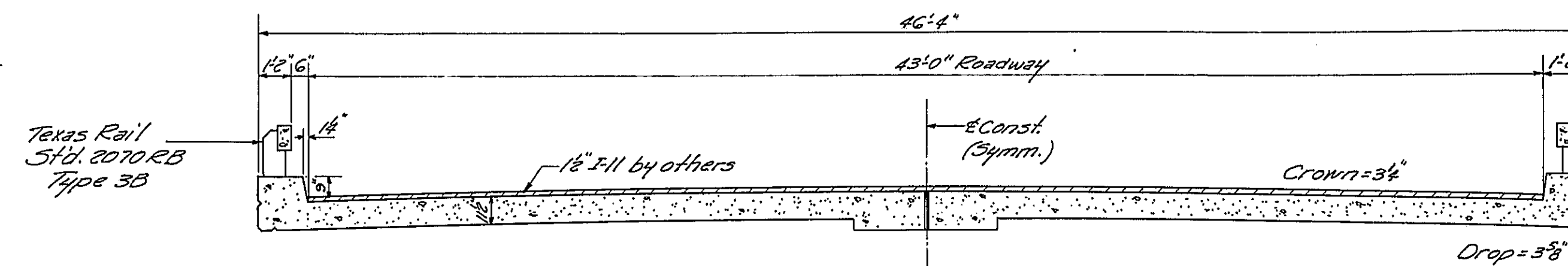
ENT. #33 Square cut on S.W. Wing of Bridge  
 13' RT. Sta. 669+05 Elev. 654.39  
 Existing structure: 40 R.C. thru girder with  
 20' Rdwy. on closed R.C. Abutments.  
 Superstructure to be removed after  
 detour is open to traffic.

STATE OF ILLINOIS  
 DEPARTMENT OF PUBLIC WORKS & BUILDINGS  
 DIVISION OF HIGHWAYS

ROUTE NO. S.B.I. RT. 24	SECTION (2,3)W	COUNTY Christian	TOTAL SHEETS 113	SHEET NO. 23	SHEET NO. 1 4 SHEETS
FED. ROAD DIST. NO. 1		STANDARD	FED. AID PROJECT		



ELEVATION

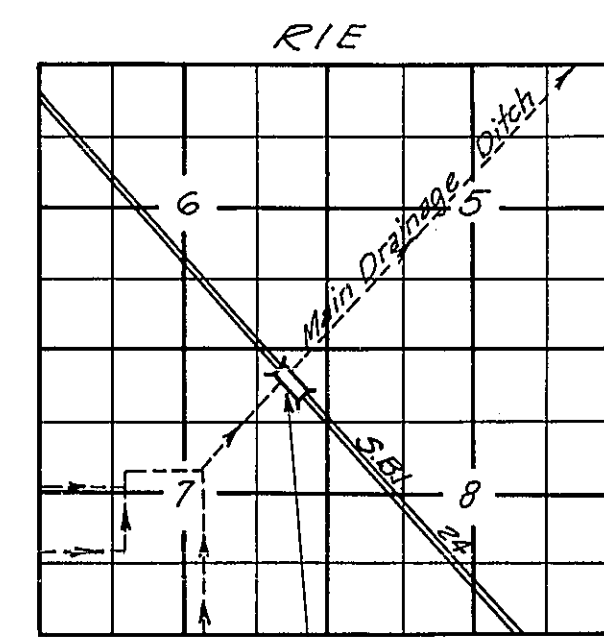


CROSS SECTION

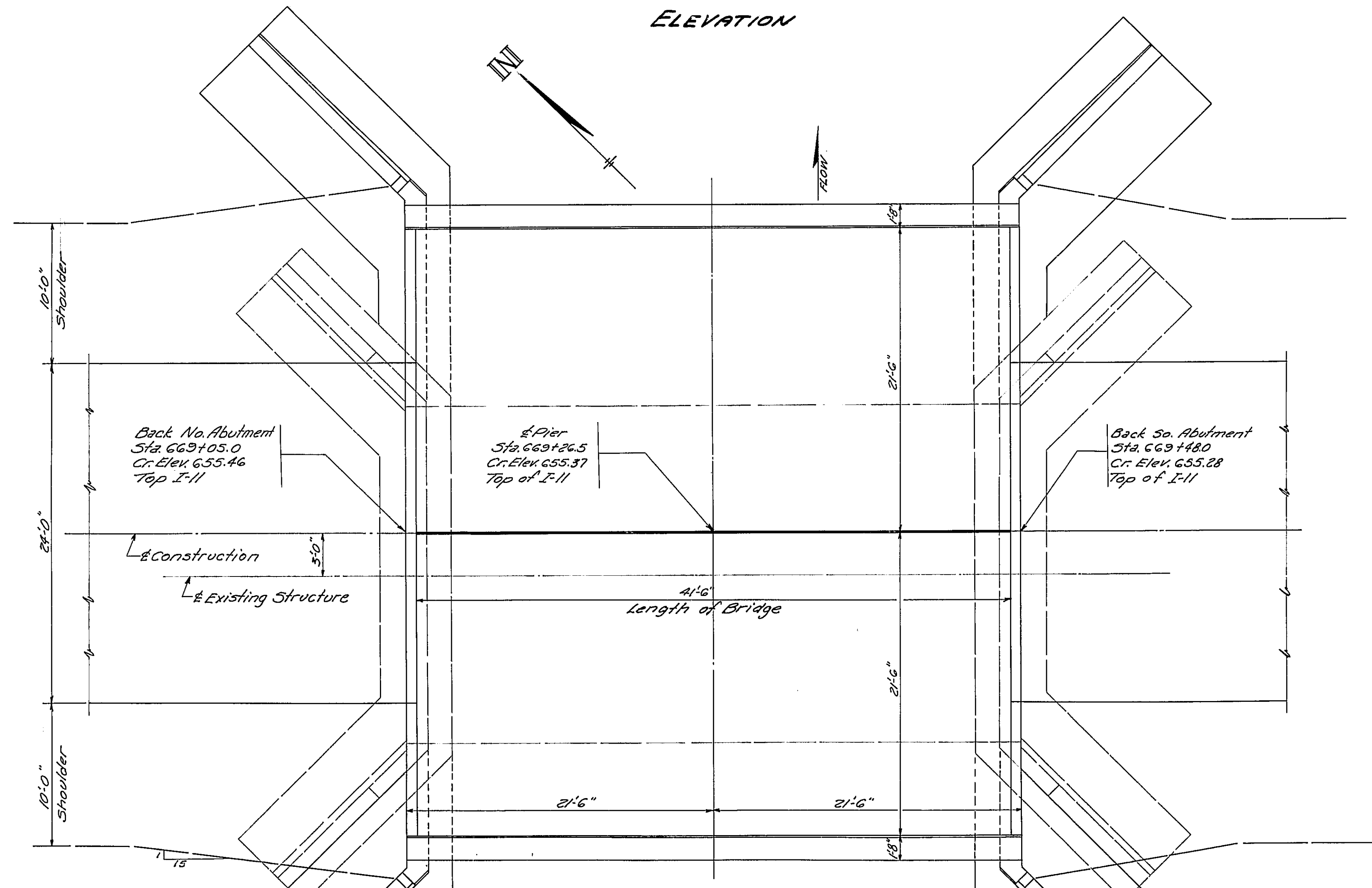
GENERAL NOTES

Class X Concrete shall be used throughout except in handrails.  
 Handrail concrete shall be used in handrails.  
 The handrail concrete in the rail posts and railing shall be poured in separate operations.  
 The contractor shall drive 1" rebar pile (Reinforced Concrete) in a permanent location at each bent as directed by the Engineer before ordering (casting) remainder of piles.

The concrete floor slab shall be finished in accordance with Article 51.18(a) of the Standard Specifications.  
 The following surfaces of the bridge shall be waterproofed: Back of the new main wall from the top of the footing to the top of the wall and the back of the wingwalls from the top of the footing to 1'-0" below the top of the wingwall. Waterproofing shall be done in accordance with Article 51.20 of the Standard Specifications.



LOCATION SKETCH



PLAN

WATERWAY INFORMATION

Drainage Area	5000 Acres
Character	Rolling Cultivated
Required Opening (Talbot C.H.)	358 Sp. Ft.
Proposed Opening	241 Sp. Ft.
Proposed Opening	319 Sp. Ft.

Station 669+26.5  
 BUILT 195 BY  
 STATE OF ILLINOIS  
 S.B.I. RT. 24 SEC. (2,3)W  
 Project F-44 (3)  
 Loading H-20-516

LETTERING FOR NAME PLATE  
 See Std. 2113

DESIGN STRESSES

$f_s = 20,000$  psi (Reinf.)  
 $f_c = 1400$  psi (Super.)  
 $f_c = 800$  psi (Sub.)  
 17-10

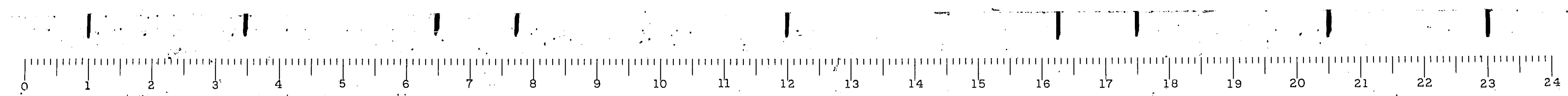
TOTAL BILL OF MATERIALS

Item	Unit	Superstr.	Substr.	Total
Class X Concrete	Cu. Yds.	86.6	107.4	194.0
Handrail Concrete	Cu. Yds.	2.3		2.3
Reinforcement Bars	Lbs.	18760	8460	27220
14" Precast Concrete Piles	Lin. Ft.		175	175
Test Piles (R.C.)	Each		1	1
Name Plates	Each	1		1
Channel Excavation	Cu. Yds.		290	290
Removal of Exist. Superstr.	Each		1	1
Masonry Removal	Cu. Yds.		10	10
Expansion Bolts	Each		96	96
Class A Excav. for Structure	Cu. Yds.		213	213
Class B Excav. for Structure	Cu. Yds.		265	265

GENERAL PLAN & ELEVATION  
 BRIDGE OVER  
 MAIN DRAINAGE DITCH  
 S.B.I. RT. 24 SEC. 2,3  
 CHRISTIAN COUNTY  
 STA. 669+26.5  
 (Built as Sec. (2,3)W)

DESIGNED T. Tenaka	EXAMINED M. P. ... ENGINEER OF BRIDGE AND TRAFFIC STRUCTURES
CHECKED W. H. ...	PASSED E. ...
DRAWN T. T. ...	APPROVED R. H. ... CHIEF HIGHWAY ENGINEER
CHECKED W. H. ...	

100 IMPERIAL



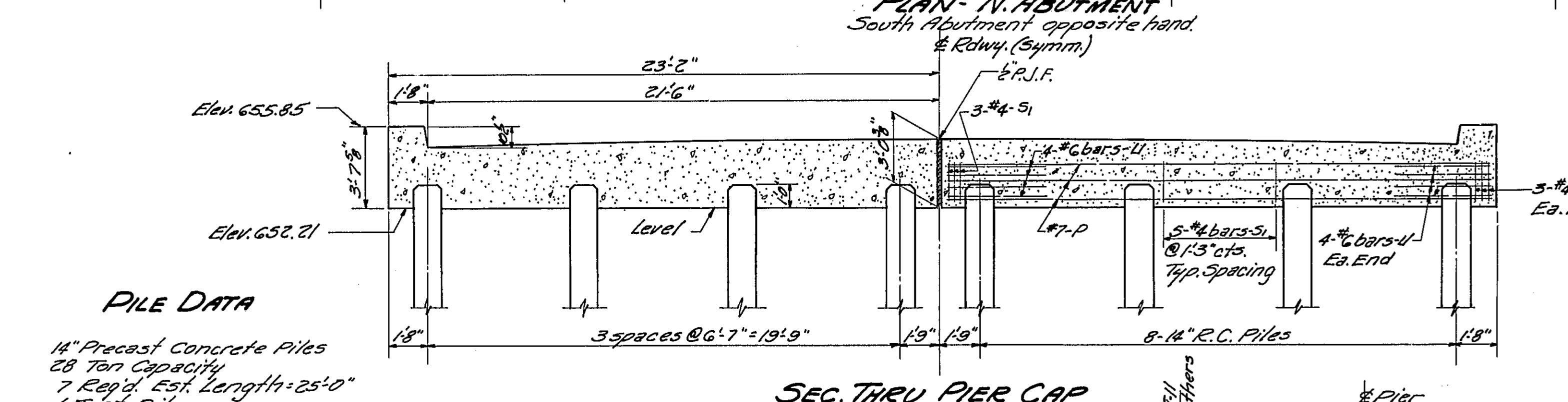
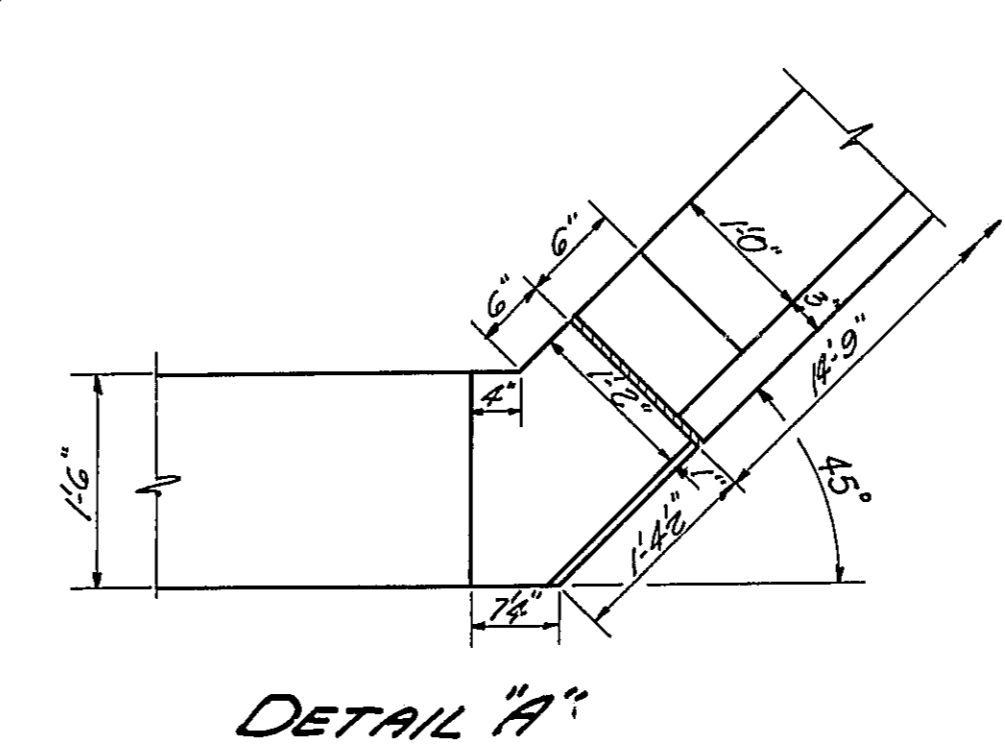
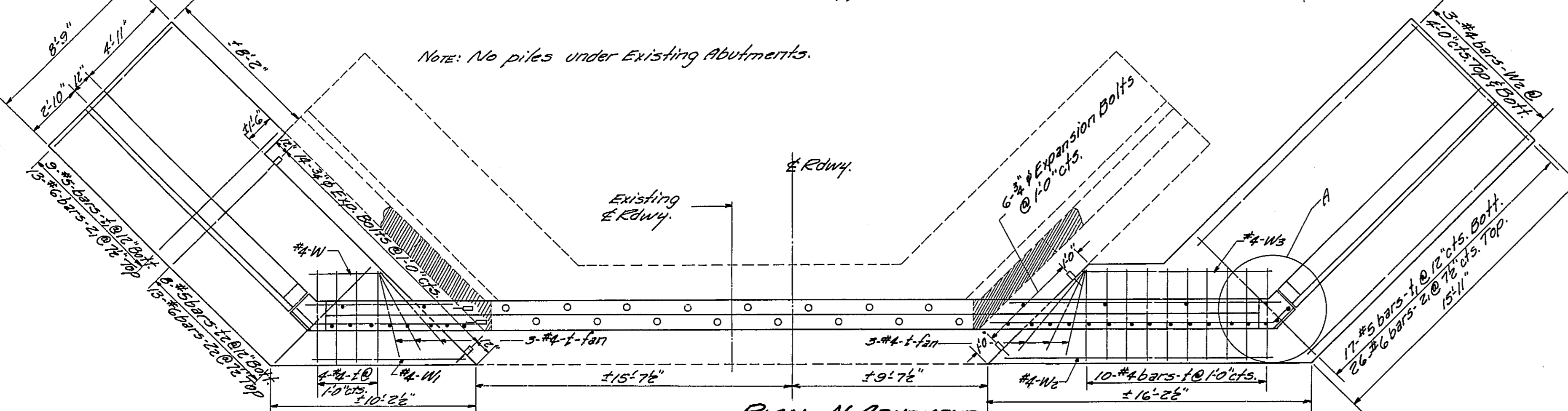
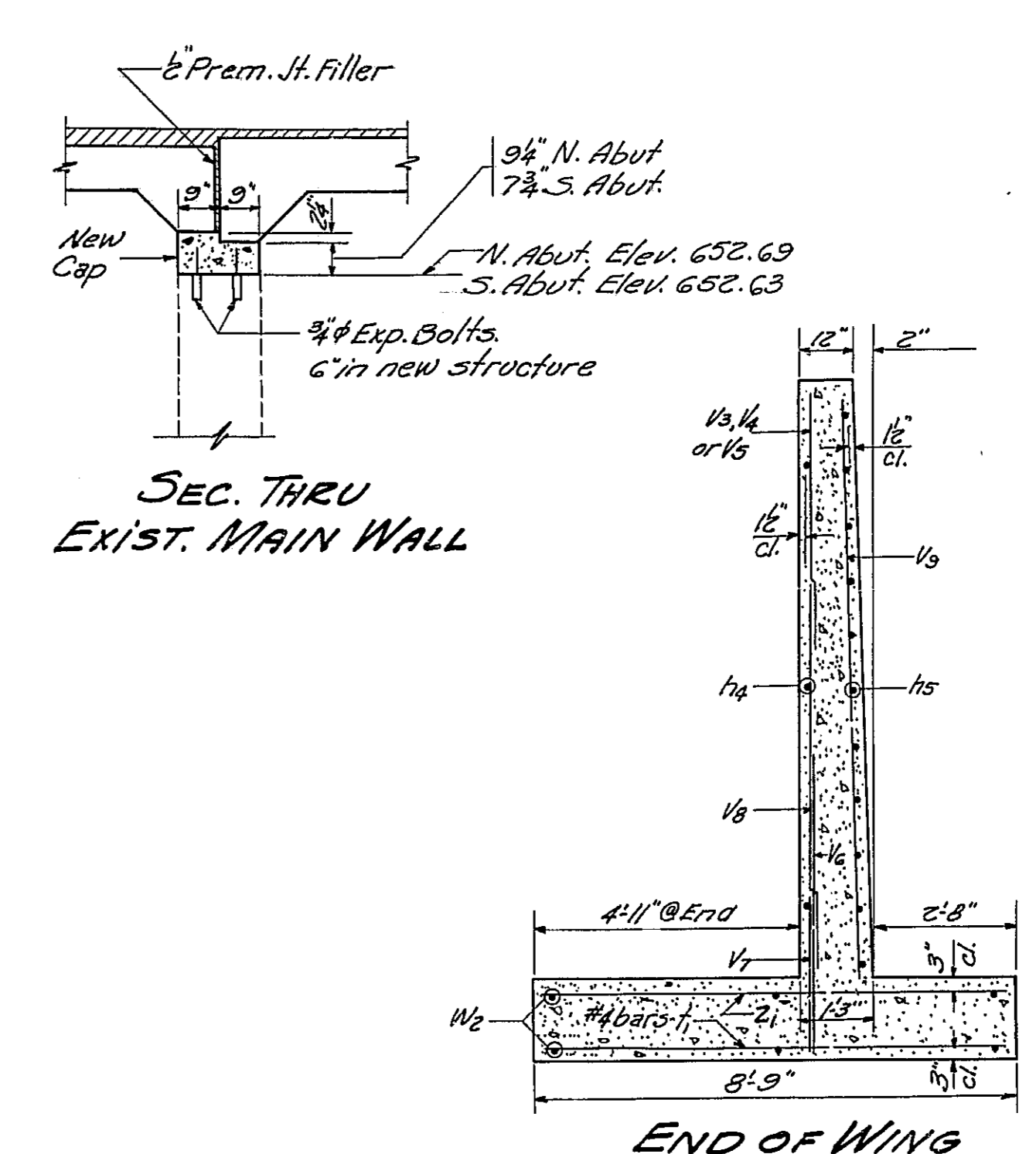
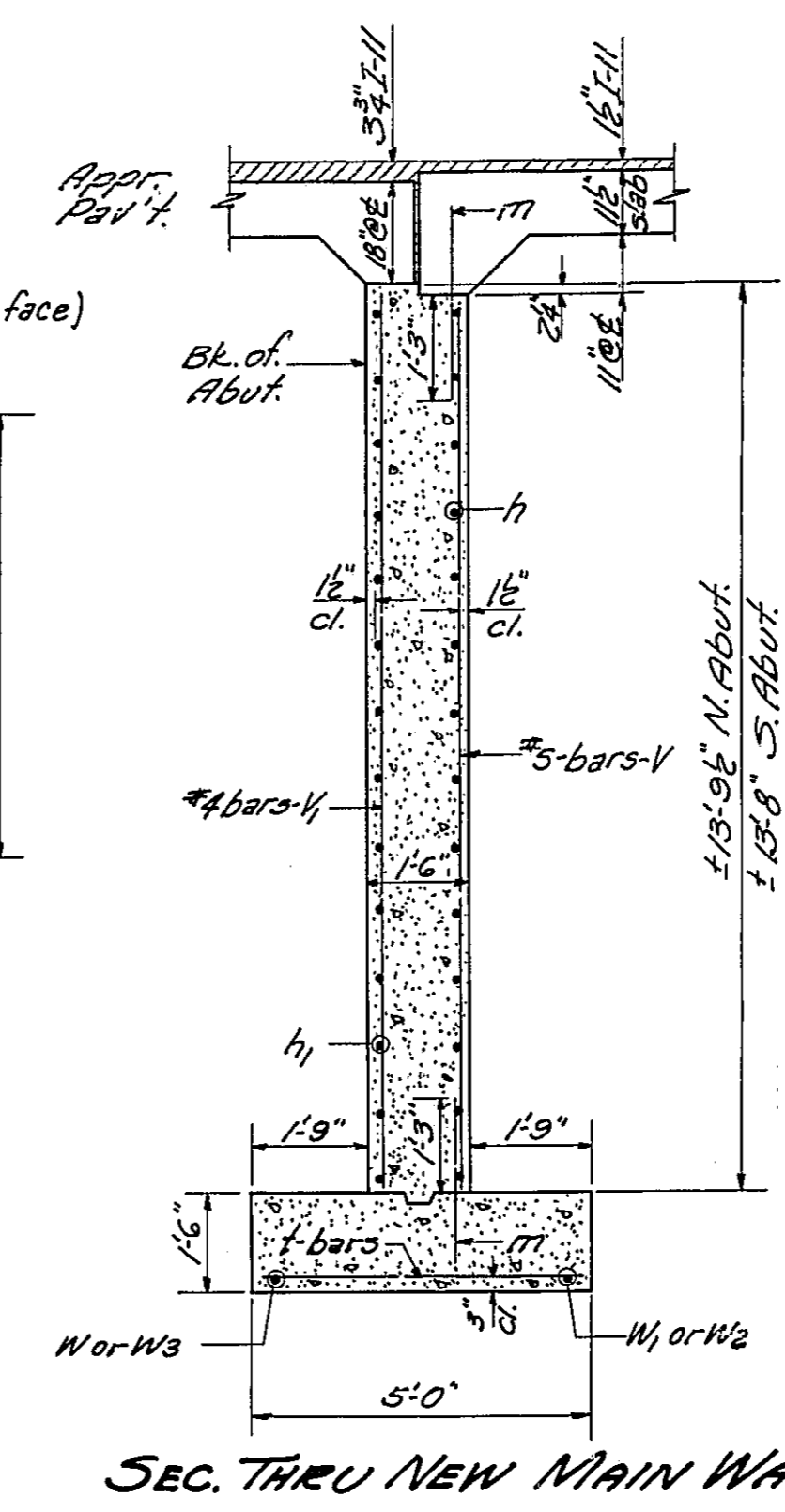
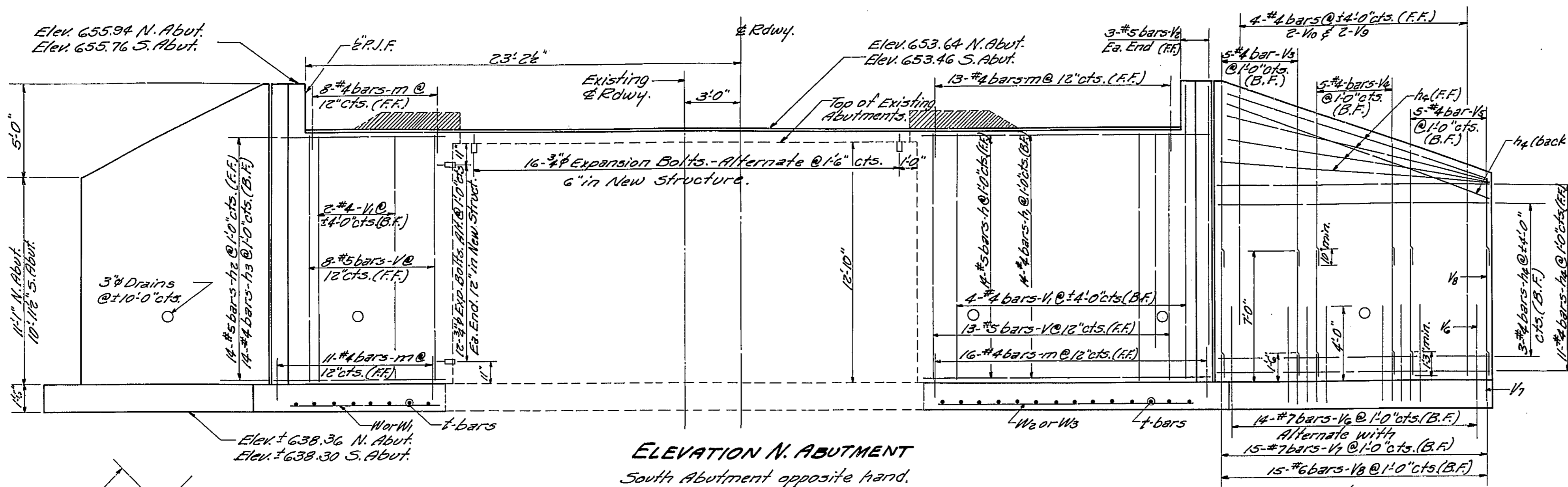


STATE OF ILLINOIS  
DEPARTMENT OF PUBLIC WORKS & BUILDINGS  
DIVISION OF HIGHWAYS

ROUTE NO.	SECTION	COUNTY	TOTAL SHEETS	SHEET NO.
24	(2,3)W	Christian	113	25
FED. ROAD DIST. NO. 1		ILLINOIS	FED. AID PROJECT	

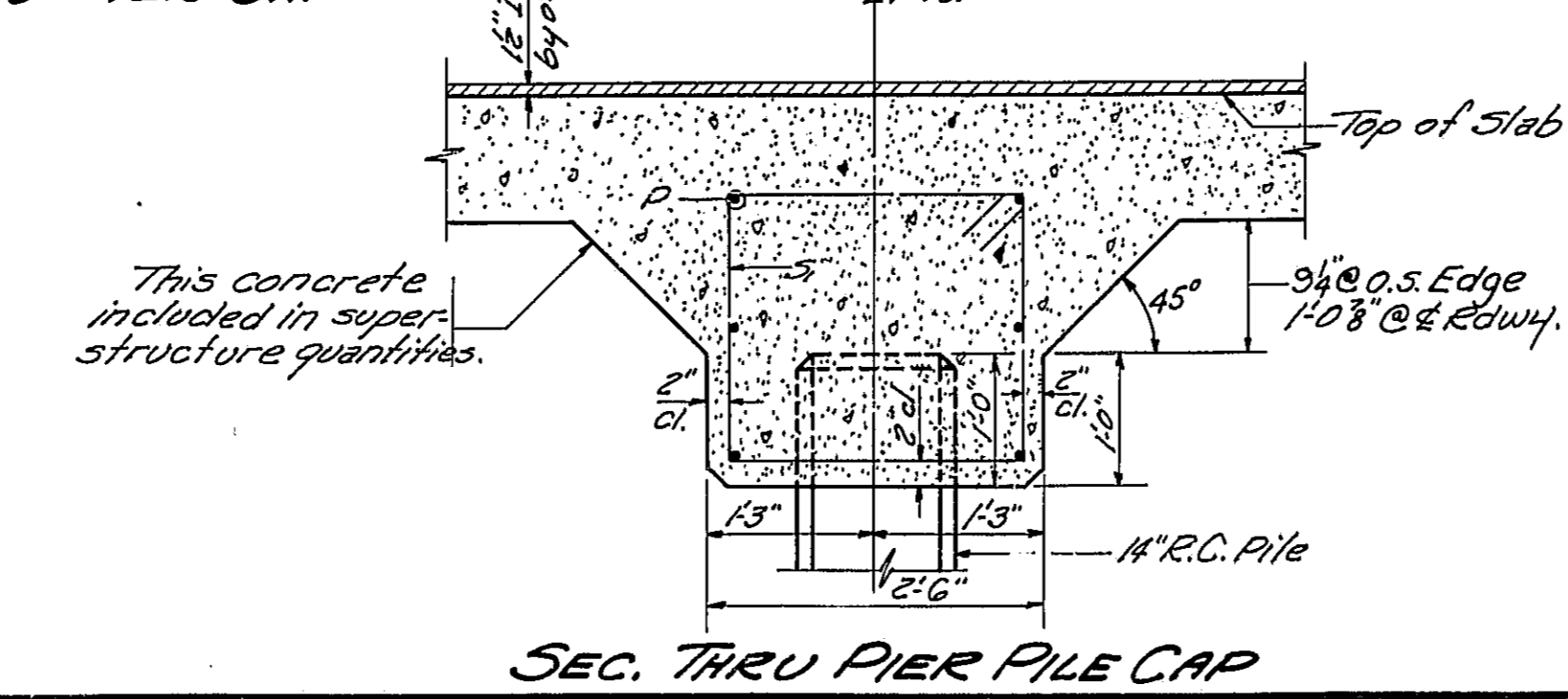
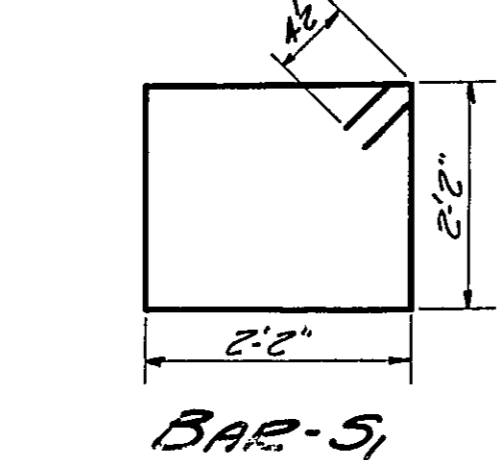
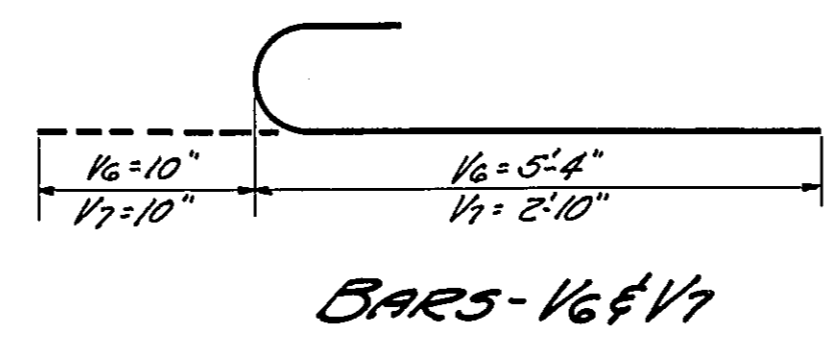
SHEET NO. 3  
4 SHEETS

Shaded area to be removed by Contractor  
to Elev. 653.46 @ S. Abut. & Elev. 653.64 N. Abut.  
Estimated 0.8 Cu. Yds. masonry removal.



**PILE DATA**  
14" Precast Concrete Piles  
28 Ton Capacity  
7 Equip. Est. Length = 25'-0"  
1 Test Pile.

Note: Drive piles 10'-0" minimum below stream bed.



**BILL OF MATERIAL - 2 ABUTMENTS**

Bar	No.	Size	Length	Shape
h	28	#5	15'1"	
h1	28	#4	13'6"	
h2	28	#5	9'1"	
h3	28	#4	7'3"	
h4	76	#2	14'6"	
v	42	#5	13'6"	
v1	12	#4	13'6"	
v2	12	#5	15'6"	
v3	20	#4	9'6"	
v4	20	#4	8'0"	
v5	20	#4	6'6"	
v6	56	#7	6'2"	
v7	60	#7	3'8"	
v8	60	#6	7'0"	
v9	8	#4	11'0"	
v10	8	#4	13'6"	
p	12	#7	23'0"	
m	96	#4	8'6"	
s1	42	#4	9'5"	
t	40	#4	4'8"	
l1	52	#5	8'6"	
l2	16	#5	7'0"	
z1	78	#6	8'6"	
z2	26	#6	7'0"	
u	16	#6	10'1"	
n	8	#4	3'0"	
w1	8	#4	7'6"	
w2	26	#4	15'3"	
w3	8	#4	9'0"	
Class X Concrete			Cu. Yds. 1024	
Reinforcement Bars			Lbs. 8460	
#8 Expansion Bolts			Each 96	
Masonry Removal			Cu. Yds. 10	
14" R.C. Piles			Lin. Ft. 175	
Test Piles			Each 1	

**SUBSTRUCTURE**  
BRIDGE OVER MAIN DRAINAGE DITCH  
S.B.I. RT. 24 SEC. 28R  
CHRISTIAN COUNTY  
(Built as Sec. (2,3)W) STA. 669 + 26.5

DESIGNED: T. Tanaka  
CHECKED: Dale L. Sizer  
DRAWN: T. T. E. Pugh  
CHECKED: Dale L. Sizer

EXAMINED: [Signature]  
PASSED: [Signature]  
APPROVED: [Signature]

JUNE 9 1957

