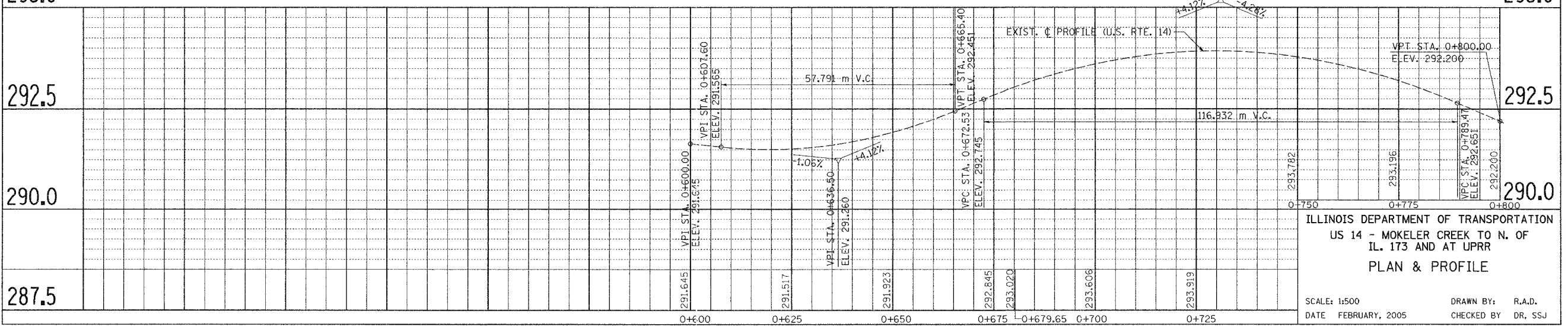
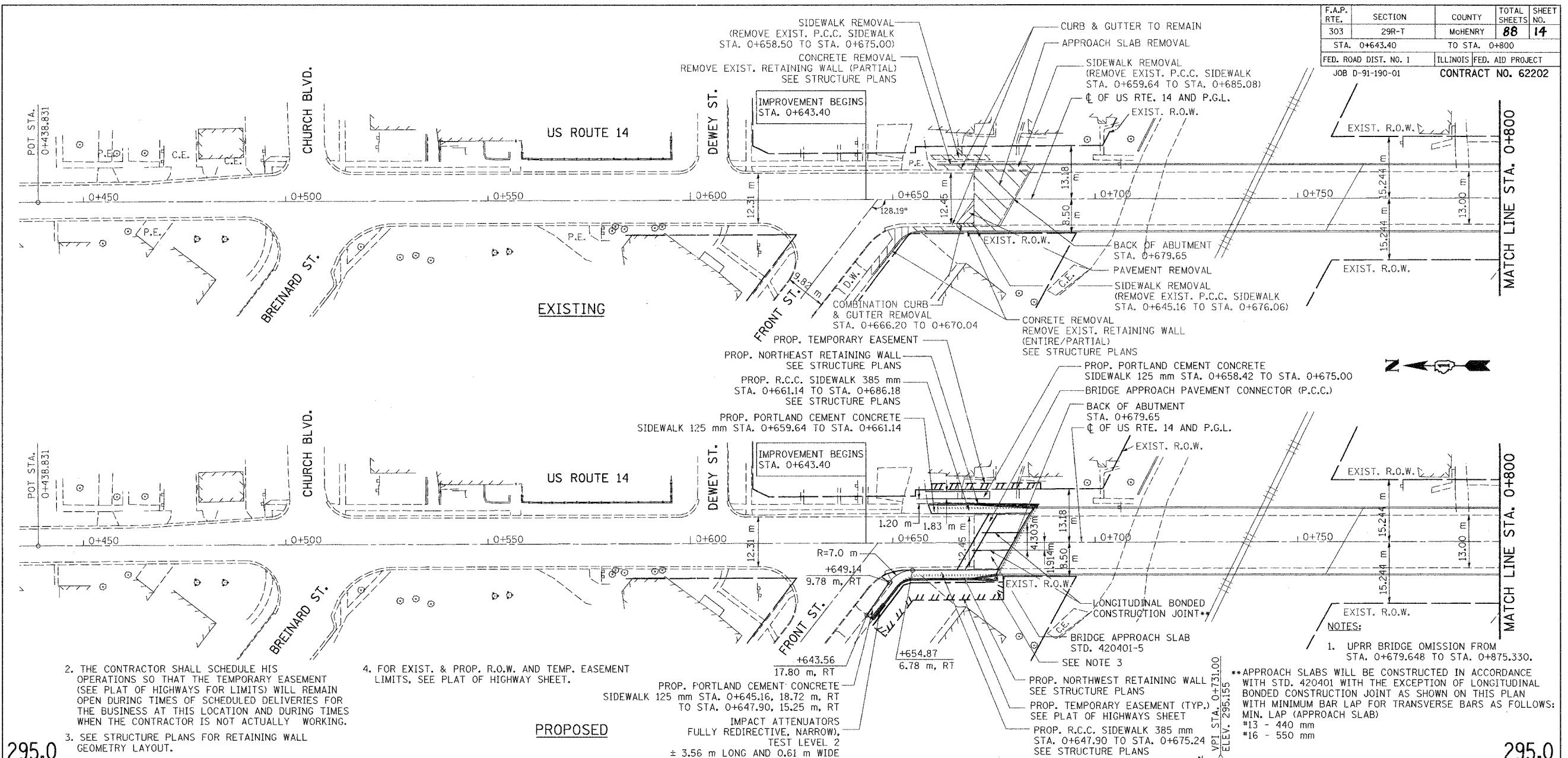


F.A.P. RTE.	SECTION	COUNTY	TOTAL SHEETS NO.	SHEET NO.
303	29R-T	McHENRY	88	14
STA. 0+643.40 TO STA. 0+800				
FED. ROAD DIST. NO. 1		ILLINOIS	FED. AID PROJECT	
JOB D-91-190-01		CONTRACT NO. 62202		

BY	DATE

BY	DATE



2. THE CONTRACTOR SHALL SCHEDULE HIS OPERATIONS SO THAT THE TEMPORARY EASEMENT (SEE PLAT OF HIGHWAYS FOR LIMITS) WILL REMAIN OPEN DURING TIMES OF SCHEDULED DELIVERIES FOR THE BUSINESS AT THIS LOCATION AND DURING TIMES WHEN THE CONTRACTOR IS NOT ACTUALLY WORKING.

3. SEE STRUCTURE PLANS FOR RETAINING WALL GEOMETRY LAYOUT.

4. FOR EXIST. & PROP. R.O.W. AND TEMP. EASEMENT LIMITS, SEE PLAT OF HIGHWAY SHEET.

PROPOSED

1. UPRR BRIDGE OMISSION FROM STA. 0+679.648 TO STA. 0+875.330.

•• APPROACH SLABS WILL BE CONSTRUCTED IN ACCORDANCE WITH STD. 420401 WITH THE EXCEPTION OF LONGITUDINAL BONDED CONSTRUCTION JOINT AS SHOWN ON THIS PLAN WITH MINIMUM BAR LAP FOR TRANSVERSE BARS AS FOLLOWS:
 *13 - 440 mm
 *16 - 550 mm

ILLINOIS DEPARTMENT OF TRANSPORTATION
 US 14 - MOKELER CREEK TO N. OF
 IL. 173 AND AT UPRR
PLAN & PROFILE

SCALE: 1:500
 DATE: FEBRUARY, 2005
 DRAWN BY: R.A.D.
 CHECKED BY: DR. SSJ

SOODAN & ASSOCIATES INC.
 Architects, Engineers & Construction Consultants