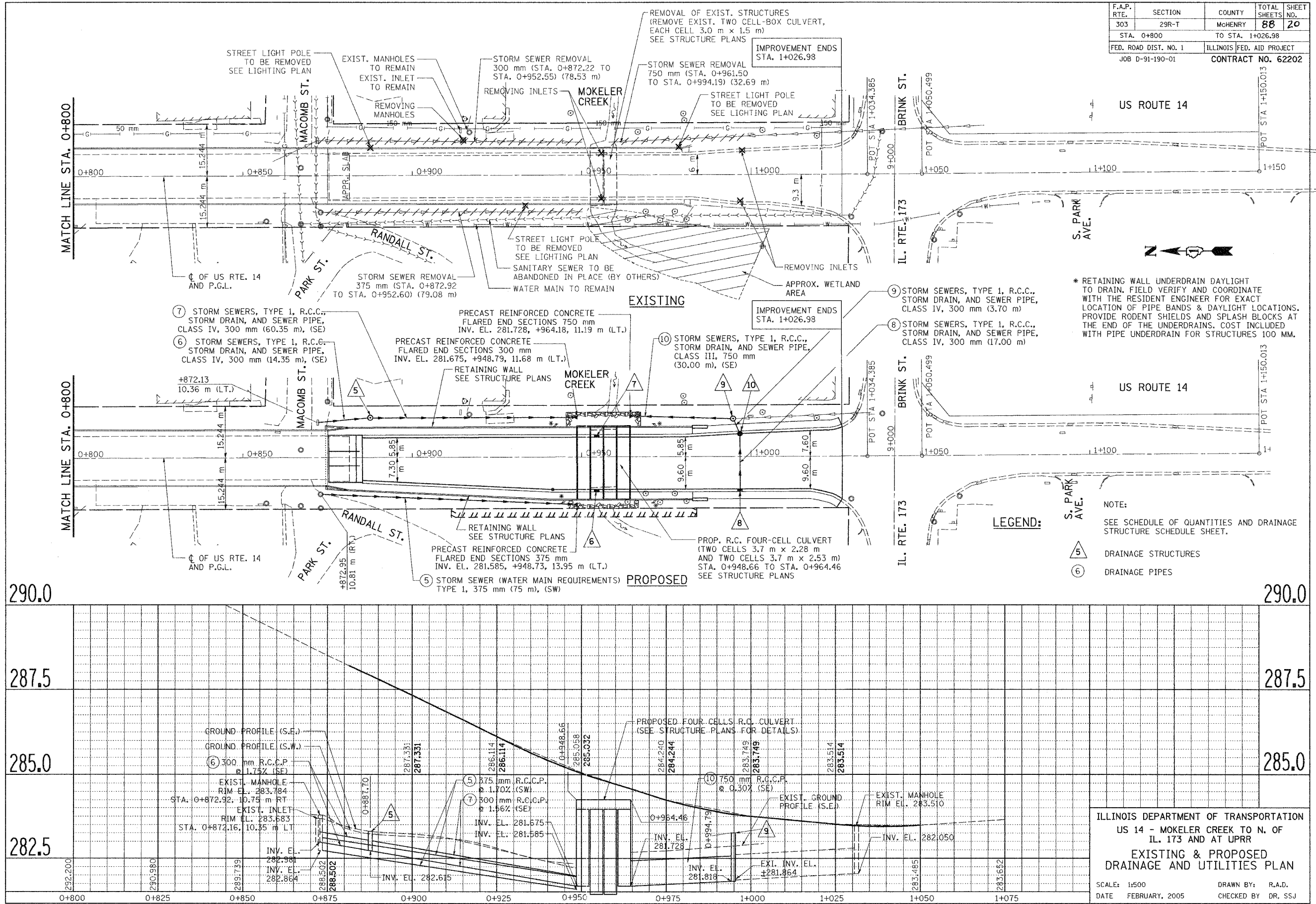


F.A.P. RTE.	SECTION	COUNTY	TOTAL SHEETS	SHEET NO.
303	29R-T	McHENRY	88	20
STA. 0+800		TO STA. 1+026.98		
FED. ROAD DIST. NO. 1		ILLINOIS FED. AID PROJECT		
JOB D-91-190-01		CONTRACT NO. 62202		

BY	DATE
ORIGINAL SURVEYED	
SURVEY PLOTTED	
NOTE BOOK	
TEMPLATE	
AREAS CHECKED	
NO.	

BY	DATE
ORIGINAL SURVEYED	
SURVEY PLOTTED	
NOTE BOOK	
TEMPLATE	
AREAS CHECKED	
NO.	



ILLINOIS DEPARTMENT OF TRANSPORTATION
 US 14 - MOKELER CREEK TO N. OF
 IL. 173 AND AT UPRR
**EXISTING & PROPOSED
 DRAINAGE AND UTILITIES PLAN**
 SCALE: 1:500 DRAWN BY: R.A.D.
 DATE FEBRUARY, 2005 CHECKED BY DR. SSJ

1253-pro-utility-2.rvt 02/10/2005 08:47:34 PM Plotted by: jsting