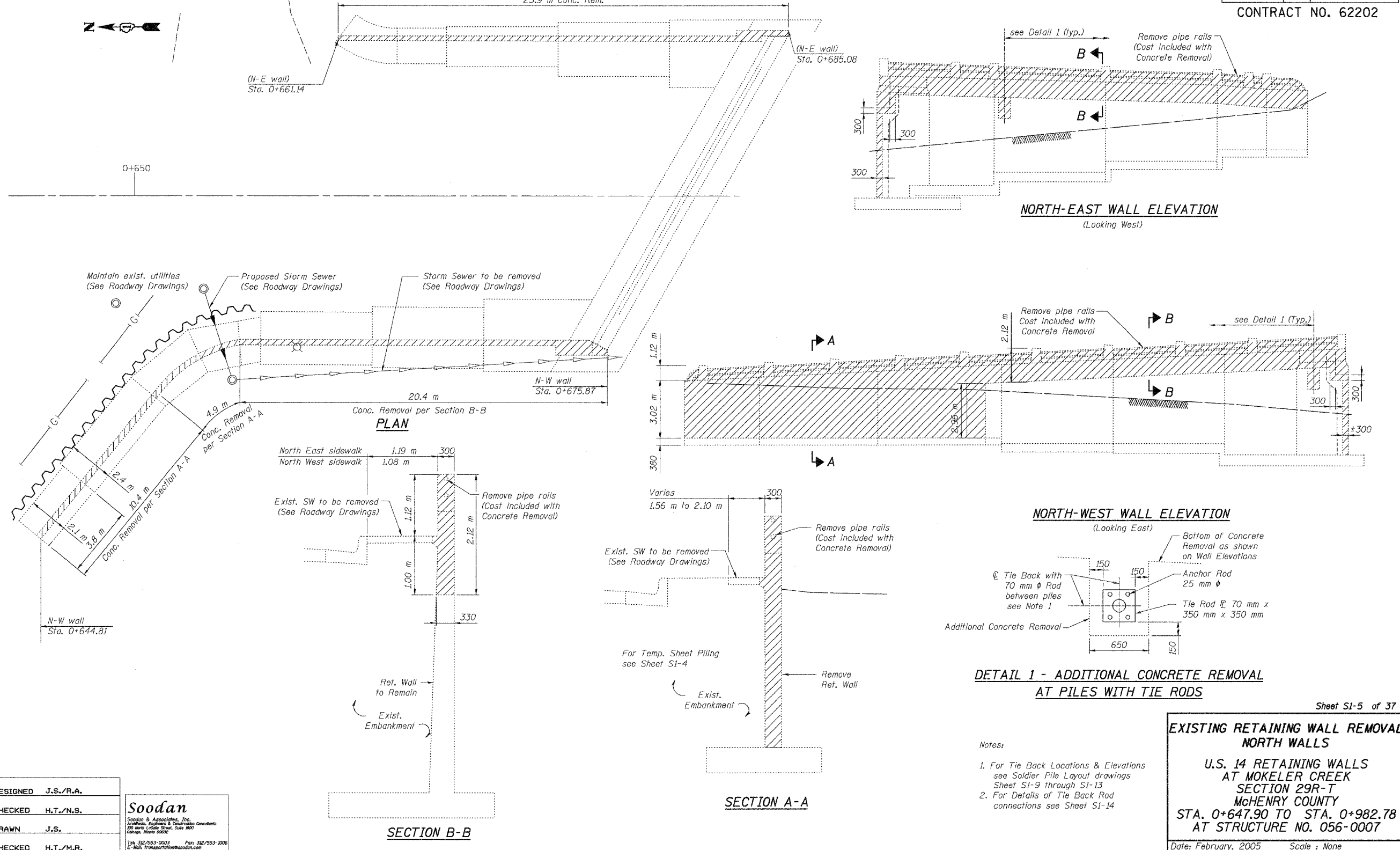


STATE OF ILLINOIS  
DEPARTMENT OF TRANSPORTATION

ROUTE NO.	SECTION	COUNTY	SHEETS	SHEET
U.S. 14	29R-T	McHENRY	88	44
F.A.P. 383				
FED. ROAD DIST. NO. 3	ILLINOIS	FED. AID PROJECT-		

CONTRACT NO. 62202



DESIGNED	J.S./R.A.
CHECKED	H.T./N.S.
DRAWN	J.S.
CHECKED	H.T./M.R.

**Soodan**  
Soodan & Associates, Inc.  
Civil/Structural Engineers & Construction Consultants  
200 North LaSalle Street, Suite 900  
Chicago, Illinois 60602  
Tel: 312/553-0003 Fax: 312/553-0006  
E-Mail: transportation@soodan.com

- Notes:
- For Tie Back Locations & Elevations see Soldier Pile Layout drawings Sheet S1-9 through S1-13
  - For Details of Tie Back Rod connections see Sheet S1-14

**EXISTING RETAINING WALL REMOVAL NORTH WALLS**

U.S. 14 RETAINING WALLS AT MOKELER CREEK SECTION 29R-T McHENRY COUNTY STA. 0+647.90 TO STA. 0+982.78 AT STRUCTURE NO. 056-0007

Date: February, 2005 Scale: None

Sheet S1-5 of 37