

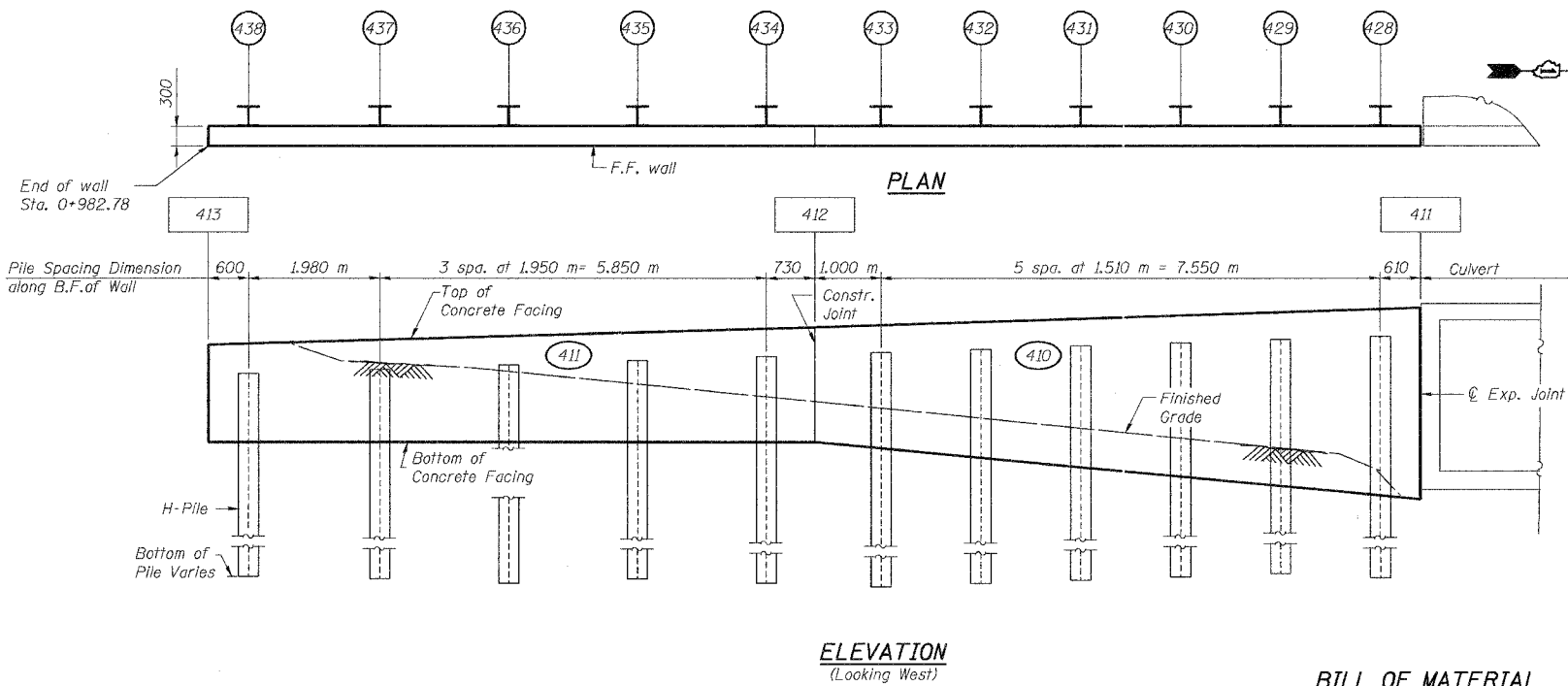
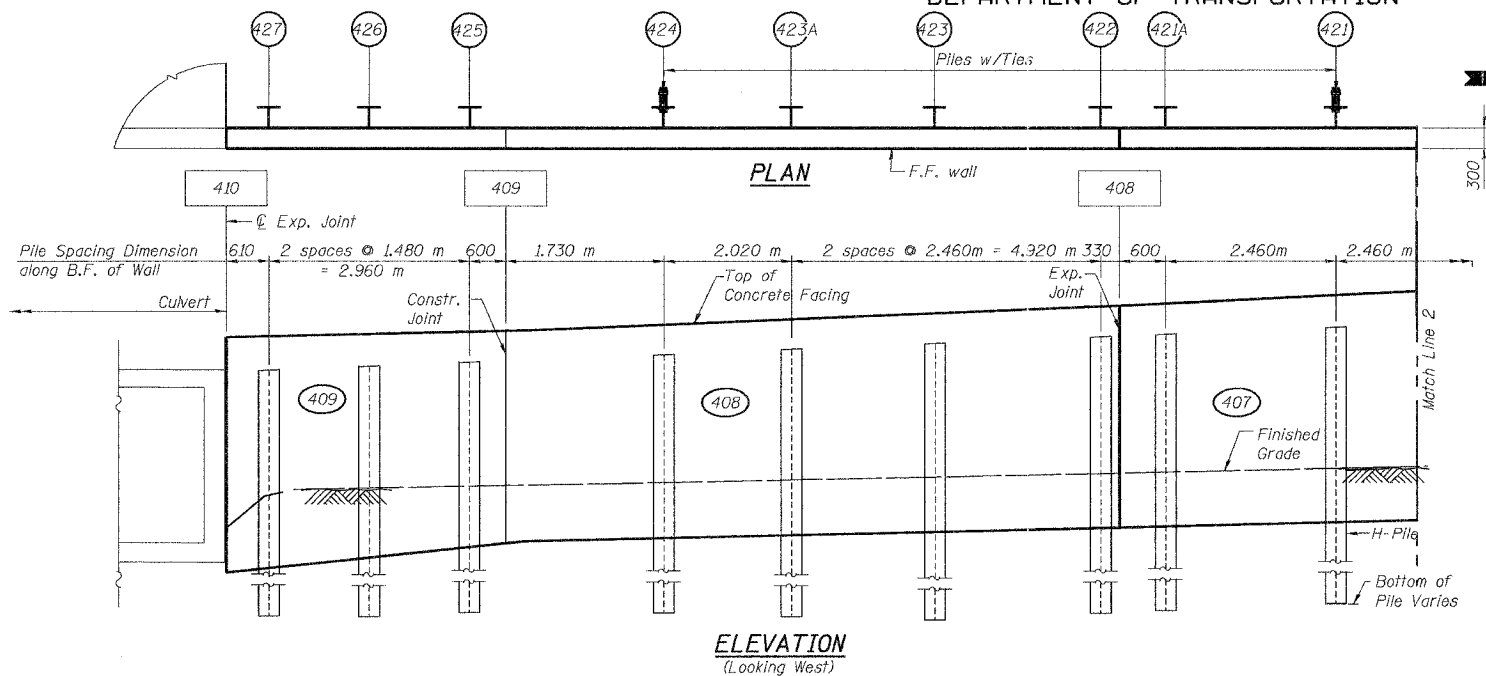
STATE OF ILLINOIS
DEPARTMENT OF TRANSPORTATION

ROUTE NO.	SECTION	COUNTY	SHEET NO.	TOTAL SHEETS
303	29R-T	McHENRY	88	50
FED. ROAD DIST. NO. 1		ILLINOIS	FED. AID PROJECT	

CONTRACT NO. 62202

PILE SUMMARY

Pile No.	Station	Offset (LT) B.F. of Wall	Pile Size	Top of Pile Elevation	Bot. of Pile Elevation	Length (m)	Elev. of C. of Tieback
401	0+875.620	9.00	HP360X173	287.63	277.63	10.0	286.74
402	0+878.260	8.84	HP360X173	287.49	277.49	10.0	286.59
403	0+880.890	8.68	HP360X173	287.34	277.34	10.0	286.44
404	0+881.890	8.64	HP360X173	287.29	277.29	10.0	286.37
405	0+884.350	8.64	HP360X173	287.17	277.17	10.0	286.25
406	0+886.810	8.64	HP360X173	287.05	277.05	10.0	286.13
406A	0+889.270	8.64	HP360X173	286.93	276.93	10.0	286.01
407	0+891.750	8.64	HP360X108	286.82	277.82	9.0	285.89
408	0+894.790	8.64	HP360X108	286.67	277.67	9.0	285.75
409	0+897.830	8.64	HP360X108	286.53	277.53	9.0	285.60
410	0+900.510	8.64	HP360X108	286.40	277.40	9.0	285.47
411	0+902.970	8.64	HP360X108	286.27	277.27	9.0	285.34
412	0+905.430	8.64	HP360X108	286.15	277.15	9.0	285.22
412A	0+907.890	8.64	HP360X108	286.02	277.02	9.0	285.09
413	0+908.870	8.64	HP360X108	285.97	276.97	9.0	285.04
414	0+911.330	8.64	HP360X108	285.85	276.85	9.0	284.92
414A	0+913.790	8.64	HP360X108	285.72	276.72	9.0	284.80
415	0+916.250	8.64	HP360X108	285.60	277.60	8.0	284.68
416	0+918.710	8.64	HP360X108	285.48	277.48	8.0	284.55
417	0+921.750	8.64	HP360X108	285.35	277.35	8.0	284.40
418	0+924.790	8.64	HP360X108	285.19	277.19	8.0	284.25
419	0+927.510	8.64	HP360X108	285.09	277.09	8.0	284.12
420	0+929.970	8.64	HP360X108	284.97	276.97	8.0	284.00
421	0+932.430	8.64	HP360X108	284.86	276.86	8.0	283.88
421A	0+934.890	8.64	HP360X108	284.74	276.74	8.0	283.76
422	0+935.820	8.64	HP360X108	284.70	276.70	8.0	283.71
423	0+938.280	8.64	HP360X108	284.59	276.59	8.0	283.60
423A	0+940.740	8.64	HP360X108	284.49	276.49	8.0	283.50
424	0+942.760	8.64	HP360X108	284.41	276.41	8.0	283.68
425	0+945.090	8.64	HP360X152	284.69	274.69	10.0	-
426	0+946.570	8.64	HP360X152	284.63	274.63	10.0	-
427	0+948.050	8.64	HP360X152	284.58	274.58	10.0	-
428	0+965.070	8.64	HP360X152	283.66	274.66	9.0	-
429	0+966.580	8.64	HP360X152	283.61	274.61	9.0	-
430	0+968.090	8.64	HP360X152	283.56	274.56	9.0	-
431	0+969.60	8.64	HP360X152	283.52	274.52	9.0	-
432	0+971.110	8.64	HP360X152	283.47	274.47	9.0	-
433	0+972.620	8.64	HP360X152	283.42	274.42	9.0	-
434	0+974.346	8.64	HP360X152	283.36	276.36	7.0	-
435	0+976.30	8.64	HP360X152	283.31	276.31	7.0	-
436	0+978.250	8.64	HP360X152	283.26	276.26	7.0	-
437	0+980.20	8.64	HP360X152	283.20	276.20	7.0	-
438	0+982.180	8.64	HP360X152	283.15	276.15	7.0	-



BILL OF MATERIAL

Item	Unit	Total
Furnishing Soldier Piles (HP Section)	m	375
Driving Soldier Piles	m	375

NOTES:

- For Notes & Legends see sheet SI-3.
- All dimensions are in millimeters (mm) except as noted.
- Work this sheet with Sheet S-14

**SOLDIER PILE LAYOUT
SOUTH-EAST WALL (2 OF 2)**
U.S. 14 RETAINING WALLS
AT MOKELER CREEK
SECTION 29R-T
McHENRY COUNTY
STA. 0+647.90 TO STA. 0+982.78
AT STRUCTURE NO. 056-0007

Date: February, 2005 Scale: None

DESIGNED	J.S./R.A.
CHECKED	H.T./N.S.
DRAWN	J.S./B.I.D.
CHECKED	H.T./M.R.

Soodan
Soedan & Associates, Inc.
Professional Engineers & Construction Consultants
121 North Lincoln Street, Suite 800
Chicago, Illinois 60602
Tel: 312/553-0003 Fax: 312/553-8208
E-Mail: Transportation@soodan.com