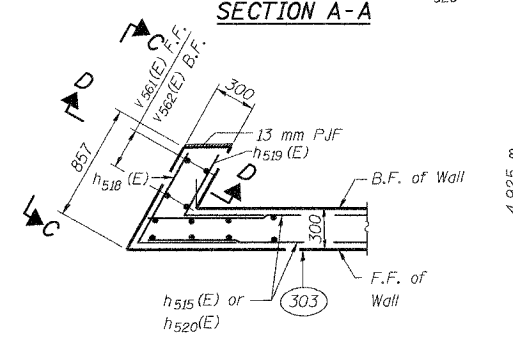
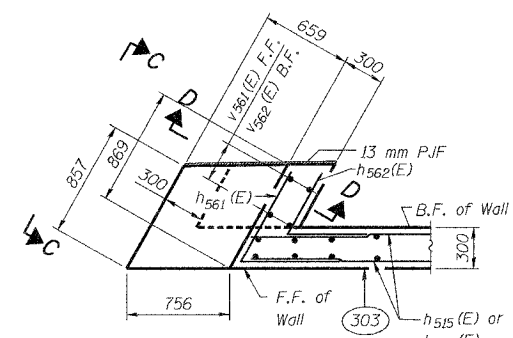
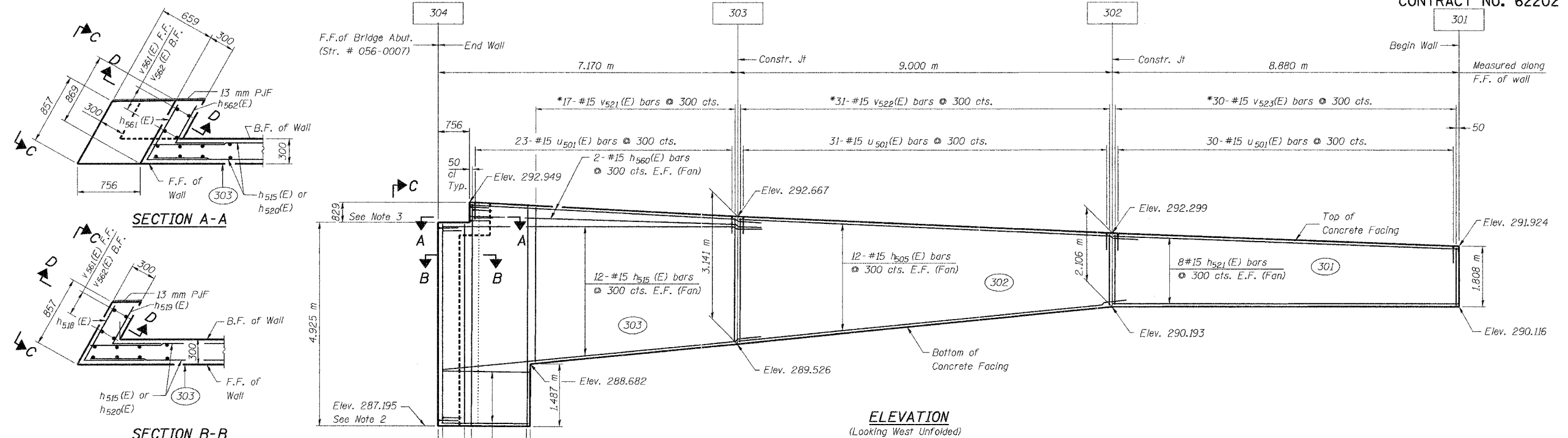


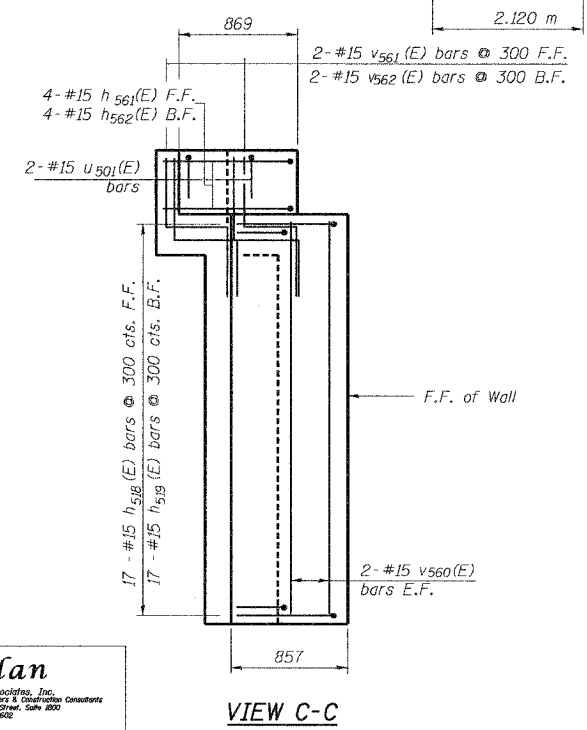
STATE OF ILLINOIS
DEPARTMENT OF TRANSPORTATION

ROUTE NO.	SECTION	COUNTY	SHEETS	NO.
S.A.P. 303	29R-T	McHENRY	88	55
FED. ROAD DIST. NO. 1	ILLINOIS	FED. AID PROJECT		

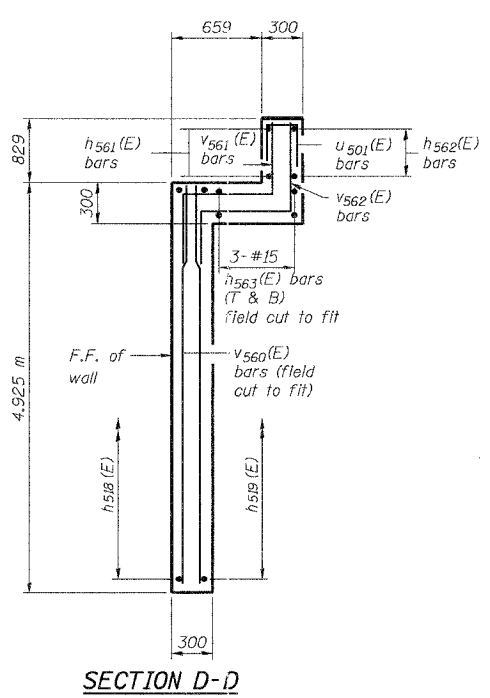
CONTRACT NO. 62202



SECTION B-B



VIEW C-C



SECTION D-D

ELEVATION
(Looking West Unfolded)

MIN. LAP
#15 = 640 mm

- NOTES:
- For Notes & Legend see sheet SI-3.
 - Match bottom of wall to the top of existing abutment footing elevation.
 - Match top of wall to existing bridge seat elevation.
 - All dimensions are in millimeters (mm) except as noted.
- * Order v521(E) thru v523(E) full length. Cut to fit and use the remainder of bars in other face.

DESIGNED	J.S./R.A.
CHECKED	H.T./N.S.
DRAWN	J.S./B.I.D.
CHECKED	H.T./M.R.

Soodan
Soodan & Associates, Inc.
Structural Engineers & Construction Consultants
210 North LaSalle Street, Suite 2000
Chicago, Illinois 60602
Tel: 312/553-0003 Fax: 312/553-8006
E-Mail: transport@soodan.com

Sheet SI-16 of 37

**CONCRETE FACING
NORTH-EAST WALL**

U.S. 14 RETAINING WALLS
AT MOKELER CREEK
SECTION 29R-T
McHENRY COUNTY
STA. 0+647.90 TO STA. 0+982.78
AT STRUCTURE NO. 056-0007

Date: February, 2005 Scale: None