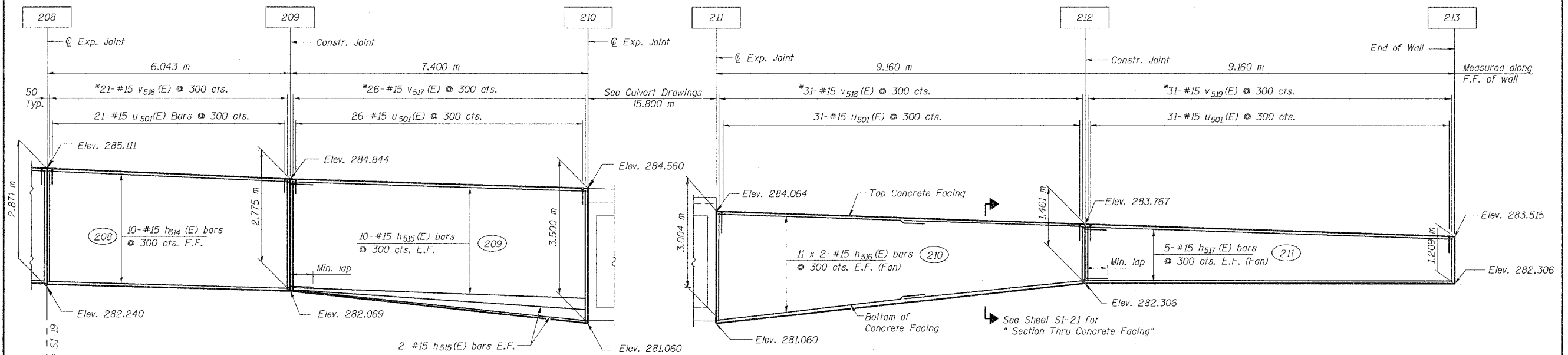


STATE OF ILLINOIS  
DEPARTMENT OF TRANSPORTATION

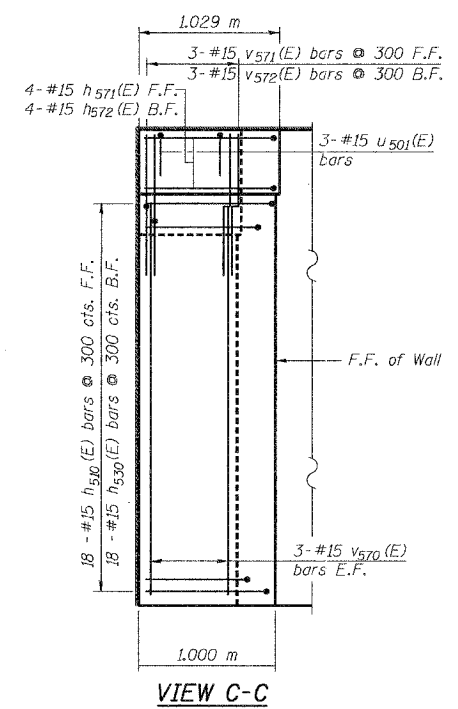
ROUTE NO.	SECTION	COUNTY	SHEETS	SHEET
P.A.P. 303	29R-T	McHENRY	88	59
FED. ROAD DIST. NO. 1	ILLINOIS	FED. AID PROJECT		

CONTRACT NO. 62202

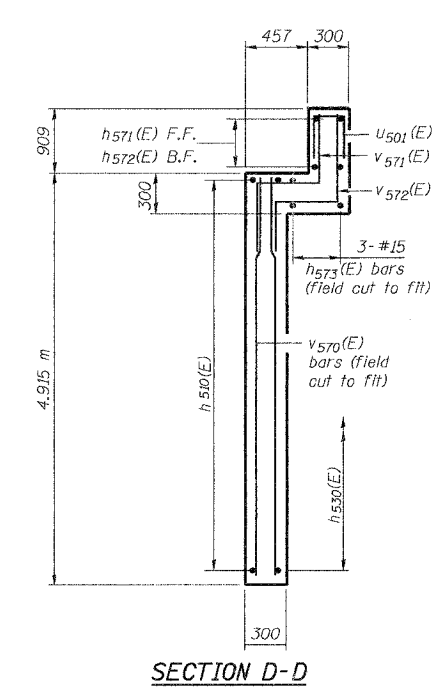


**ELEVATION**  
(Concrete Facing Panels 208 & 209)  
(Looking East Unfolded)

**ELEVATION**  
(Concrete Facing Panels 210 & 211)  
(Looking East Unfolded)



**VIEW C-C**



**SECTION D-D**

**NOTES:**

- For Notes & Legend see sheet S1-3.
  - Bars indicated thus 1 x 3-#15 etc. indicates 1 line of bars with 3 lengths per line.
  - All dimensions are in millimeters (mm) except as noted.
- \* Order v516 (E) thru v519 (E) full length. Cut to fit and use the remainder of bars in other face.

DESIGNED	J.S./R.A.
CHECKED	H.T./N.S.
DRAWN	J.S./B.I.D.
CHECKED	H.T./M.R.

**Soodan**  
Soodan & Associates, Inc.  
Architect, Engineer & Construction Consultants  
500 North LaSalle Street, Suite 3000  
Chicago, Illinois 60610  
Tel: 312/551-0003 Fax: 312/551-0006  
E-Mail: [frampton@soodan.com](mailto:frampton@soodan.com)

**MIN. LAP**  
#15 = 640 mm

Sheet S1-20 of 37  
**CONCRETE FACING**  
**SOUTH-WEST WALL (2 of 2)**  
U.S. 14 RETAINING WALLS  
AT MOKELER CREEK  
SECTION 29R-T  
McHENRY COUNTY  
STA. 0+647.90 TO STA. 0+982.78  
AT STRUCTURE NO. 056-0007  
Date: February, 2005 Scale: None